



DE VALK  
YACHT BROKERS



## SUPER VAN CRAFT 13.20



DE VALK  
YACHT BROKERS

# SUPER VAN CRAFT 13.20

## BROKER'S COMMENTS

Very well maintained example of the famous Super van Craft family. Due to her size and the fact that she has one steering position she provides you a very spacious and comfortable lay-out. I.a. equipped with Eberspacher heating, mechanical wheelsteering, electric bow- and stern thruster and navigation equipment. Always stored in a covered boat house.

*Hans Visser*

## SPECIFICATIONS

<b>Dimensions</b>	13.80 x 3.85 x 1.25 (m)	<b>Builder</b>	Klaassen Voorschoten
<b>Built</b>	1987	<b>Cabins</b>	2
<b>Material</b>	Steel	<b>Berths</b>	4
<b>Engine(s)</b>	2 x DAF DF615M diesel	<b>Hp/Kw</b>	2 x 120.00 (hp), 88.20 (kw)
<b>Asking price</b>	sold (VAT )	<b>Lying</b>	at sales office

## CONTACT

<b>Sales office</b>	De Valk Sneek	<b>Telephone</b>	+31 515 42 80 30
<b>Address</b>	Zwolsmanweg 7 8606 KC Sneek The Netherlands	<b>E-mail</b>	sneek@devalk.nl

## DISCLAIMER

These particulars are given in good faith as supplied but cannot be guaranteed.



# SUPER VAN CRAFT 13.20

## GENERAL

<b>Model</b>	SUPER VAN CRAFT 13.20
<b>Type</b>	motor yacht
<b>LOA (m)</b>	13,80
<b>Beam (m)</b>	3,85
<b>Draft (m)</b>	1,25
<b>Year built</b>	1987
<b>Builder</b>	Klaassen Voorschoten
<b>Country</b>	The Netherlands
<b>Displacement (t)</b>	19
<b>Hull material</b>	steel
<b>Hull colour</b>	white
<b>Hull shape</b>	roundbilged
<b>Superstructure material</b>	wood
<b>Deck finish</b>	teak
<b>Window frame</b>	wood
<b>Window material</b>	glass
<b>Mast can be lowered</b>	manual
<b>Fuel tank (litre)</b>	1000
<b>Freshwater tank (litre)</b>	1000
<b>Blackwater tank (litre)</b>	385
<b>Wheel steering</b>	mechanical

## ACCOMMODATION

<b>Cabins</b>	2
<b>Berths</b>	+ 1 at sofa 4
<b>Saloon</b>	yes
<b>Heating</b>	diesel ducted hot air Eberspacher
<b>Dinette</b>	yes
<b>Galley</b>	yes
<b>Countertop</b>	yes



# SUPER VAN CRAFT 13.20

Sink	stainless steel
Cooker	calor gas 4 burner
Extractor	yes
Fridge	yes
Hot water system	220V + engine
Water pressure system	yes
Owners cabin	double bed
Wardrobe	yes
Bathroom	en suite
Toilet	en suite
Toilet system	electric
Wash basin	in the bathroom
Shower	en suite
Guest cabin 1	twin single
Wardrobe	yes
Toilet	en suite
Toilet system	electric
Wash basin	at the toilet

## MACHINERY

No of engines	2
Make	DAF
Type	DF615M
HP	120,00
kW	88,20
Fuel	diesel
Engine hours	2200
Engine controls	mechanical
Bowthruster	electric Vetus
Sternthruster	electric Vetus
Propeller type	fixed



Propeller shaft material	steel
Shaft lubrication	grease
Electric bilge pump	yes
Electrical installation	yes
Battery charger/inverter	Victrom Quattro 24/3000/70
Solar panel	yes
Shorepower	with cable

## NAVIGATION

Compass	Liquid
Depth sounder	Raymarine ST60+
VHF	Sailor RT2048
GPS	Shipmate RS5800
Loudhailer	yes

## EQUIPMENT

Sprayhood	yes
Cockpit cover	yes
Bimini	yes
Winter cover	yes
Cockpit cushions	yes
Bathing platform	yes
Boarding ladder	yes
Gangway	yes
Anchor	yes
Anchor chain	yes
Windlass	Lofrance tigris
Davits	
Sea railing	yes
Grab rail (superstructure)	yes
Wiper	yes



# SUPER VAN CRAFT 13.20

<b>Horn</b>	yes
<b>Fenders</b>	yes
<b>Mooring lines</b>	yes
<b>TV</b>	yes
<b>Radio-cd player</b>	Kenwood
<b>Extra info</b>	sun blinds



# SUPER VAN CRAFT 13.20



# SUPER VAN CRAFT 13.20





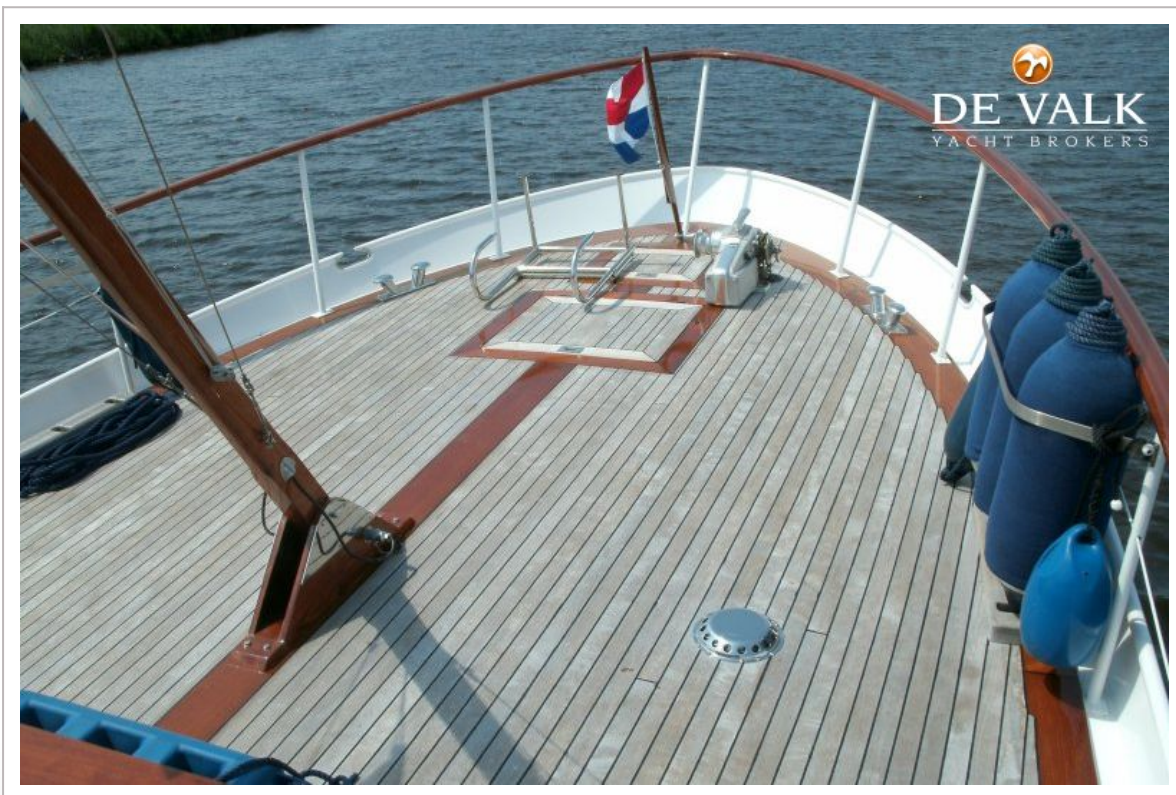
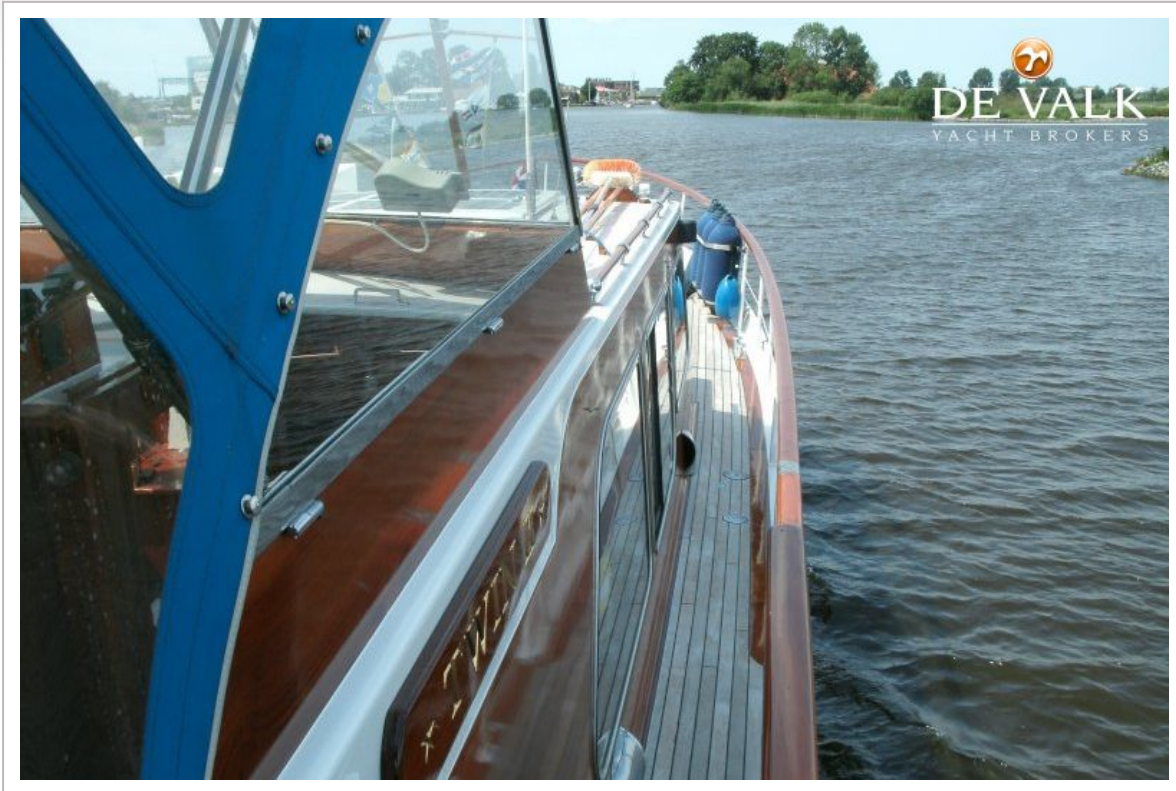
# SUPER VAN CRAFT 13.20



# SUPER VAN CRAFT 13.20



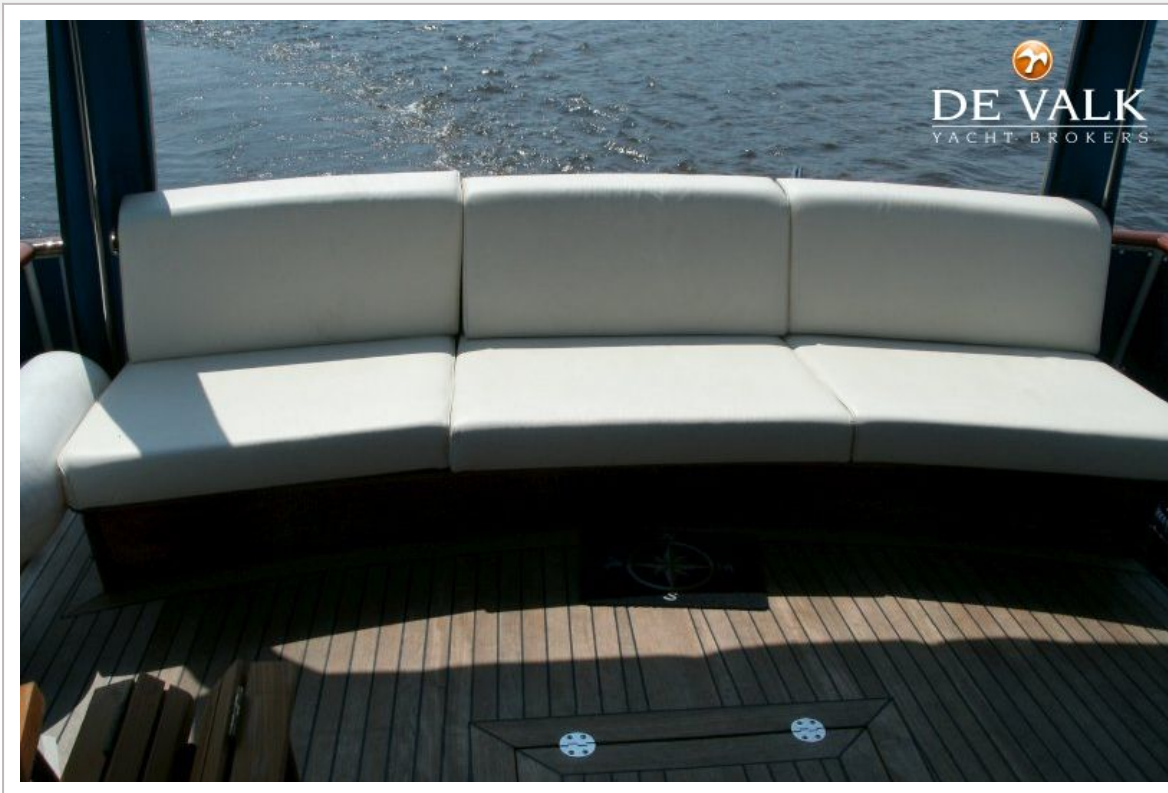
# SUPER VAN CRAFT 13.20



# SUPER VAN CRAFT 13.20



# SUPER VAN CRAFT 13.20



# SUPER VAN CRAFT 13.20



# SUPER VAN CRAFT 13.20

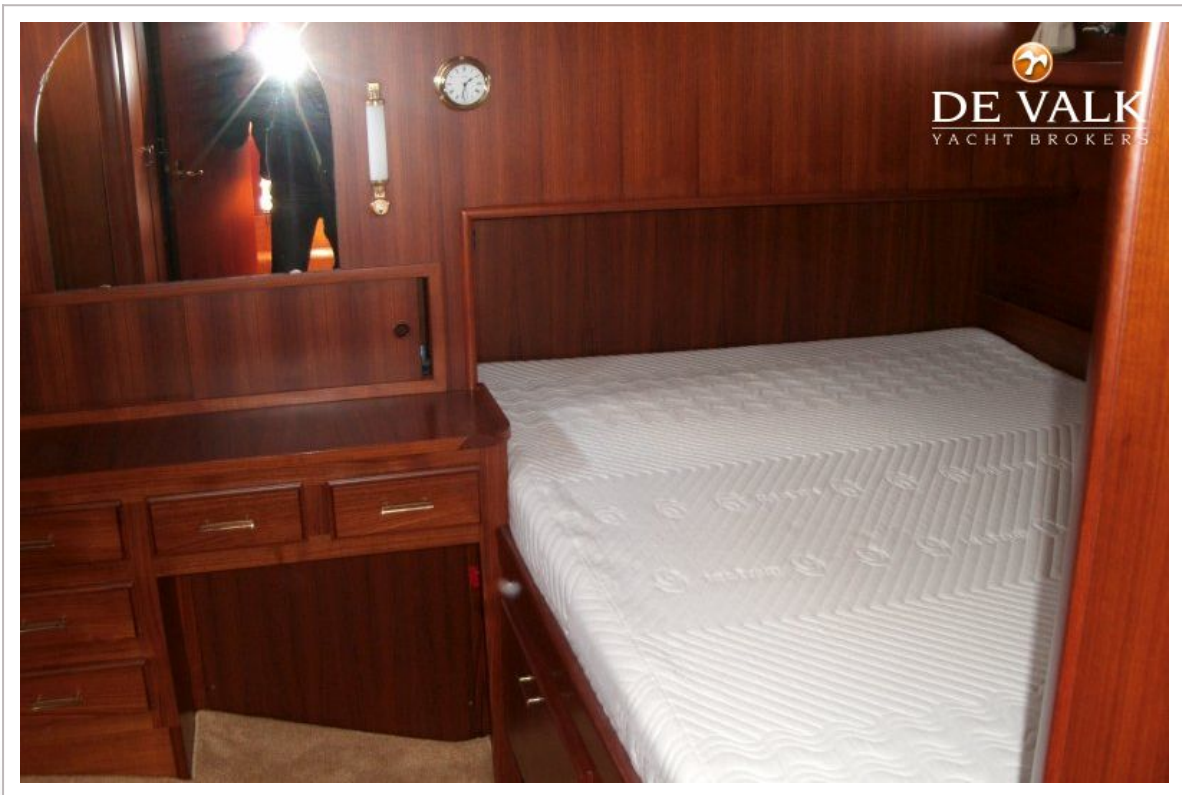


# SUPER VAN CRAFT 13.20

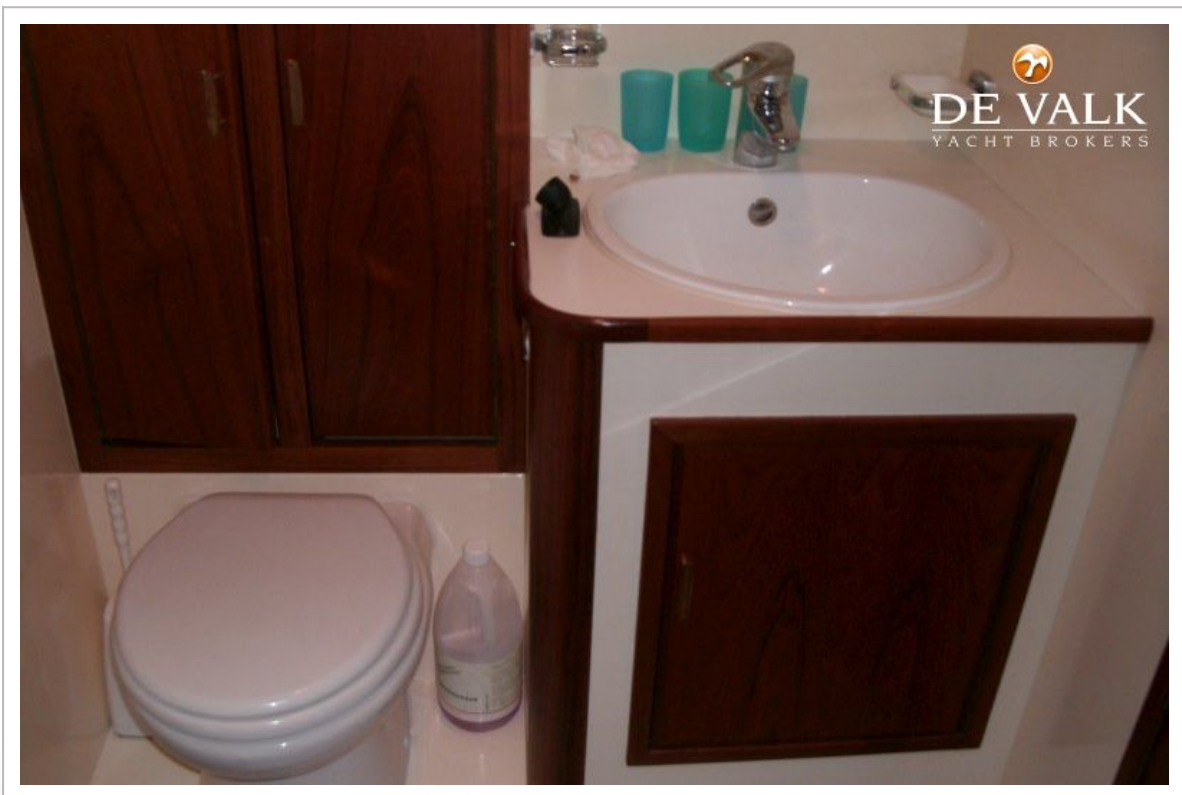




# SUPER VAN CRAFT 13.20



# SUPER VAN CRAFT 13.20



# SUPER VAN CRAFT 13.20

