



## ATLANTIC 42

# ATLANTIC 42

## BROKER'S COMMENTS

The Atlantic 42, offered by the first owner, is seagoing and offers great luxury for the 4 guests she can host. For the last three years the 42 was stalled in a heated hall, but after servicing she is in the water again and looking for a new owner. With two bathrooms, salon, dinette and the extensive equipment the Atlantic 42 has all you can wish for.

*Koen Mulder*

## SPECIFICATIONS

<b>Dimensions</b>	13.10 x 4.25 x 1.20 (m)	<b>Builder</b>	Holland Boats Workum
<b>Built</b>	2006	<b>Cabins</b>	2
<b>Material</b>	GRP	<b>Berths</b>	4
<b>Engine(s)</b>	2 x Volvo Penta D6-370 diesel	<b>Hp/Kw</b>	2 x 370.00 (hp), 271.95 (kw)
<b>Asking price</b>	sold (VAT )	<b>Lying</b>	at sales office

## CONTACT

<b>Sales office</b>	De Valk Loosdrecht B.V.	<b>Telephone</b>	+31 (0)35 582 90 30
<b>Address</b>	't Breukeleveense Meentje 6 1231LM Loosdrecht / Wijdmeren NL	<b>E-mail</b>	loosdrecht@devalk.nl

## DISCLAIMER

These particulars are given in good faith as supplied but cannot be guaranteed.



## GENERAL

Model	ATLANTIC 42
Type	motor yacht
LOA (m)	13,10
LWL (m)	10,41
Beam (m)	4,25
Draft (m)	1,20
Air draft (m)	3,50
Air draft min (m)	3,00
Headroom (m)	2,00
Year built	2006
Builder	Holland Boats Workum
Country	The Netherlands
Designer	John Bennet
Displacement (t)	12
CE norm	B
Hull material	GRP
Hull colour	white
Hull shape	deep-V
Superstructure material	GRP
Rubbing strake	
Deck material	GRP
Deck finish	teak
Cockpit deck finish	teak
Antifouling (year)	2017
Window frame	aluminium
Window material	glass
Portholes	stainless steel
Radar arch	collapsible
Mast can be lowered	manual
Fuel tank (litre)	stainless steel 675



Fuel tank 2 (litre)	stainless steel 675
Level indicator (fuel tank)	yes
Freshwater tank (litre)	polyethylene 456
Level indicator (freshwater)	yes
Blackwater tank (litre)	polyethylene 2x 186
Level indicator (blackwater)	yes
Blackwater tank extraction	deck extraction + pump
Greywater tank (litre)	polyethylene 2x auto empty
Wheel steering	hydraulic
Outside helm position	hydraulic
More info on hull	Ship has been stored away for 3 years in a hall

## ACCOMMODATION

Cabins	2
Berths	4
Interior	cherry
Floor	carpet
Aft deck	yes
Saloon	yes
Headroom saloon (m)	2
Heating	diesel ducted hot air Eberspächer D5L
Heating 2	diesel ducted hot air Eberspächer D5L
Chart table	yes
Aft Cabin	yes
Dinette	yes
Opening door to aft deck	yes
Galley	yes
Countertop	granite
Sink	stainless steel
Cooker	ceramic Bosch
Extractor	yes



Microwave/oven combi	Bosch
Fridge	75 L + minifridge in salon
Freezer	2x in fridge
Hot water system	220V + engine
Water pressure system	electrical
Crockery	yes
Owners cabin	French bed
Bed length (m)	2
Wardrobe	hanging/drawers/shelves
Bathroom	en suite Separated from toilet
Toilet	en suite Separated from shower
Toilet system	electric
Wash basin	at the toilet
Shower	en suite
Guest cabin 1	French bed
Bed length (m)	2
Wardrobe	hanging/drawers/shelves
Bathroom	en suite
Toilet	en suite Shared
Toilet system	electric
Wash basin	in the bathroom
Shower	en suite
Washing machine/dryer combi	Bosch Classi XX

## MACHINERY

No of engines	2
Make	Volvo Penta
Type	D6-370
HP	370,00
kW	271,95
Fuel	diesel



# ATLANTIC 42

Year installed	2006
Maximum speed (kn)	25
Cruising speed (kn)	18
Engine hours	810
Engine cooling system	freshwater heat exchanger
Drive	shaft
Engine controls	electrical
Gearbox	hydraulic HS80AE
Bowthruster	electric
Propeller type	fixed
Propeller blades	5
Propeller shaft material	stainless steel
Shaft lubrication	water
Manual bilge pump	yes
Electric bilge pump	yes
Bilge alarm	yes
Generator	wet exhaust Fisher Panda 800E
Running hours generator	118
Start battery	4x 120Ah
Service battery	12x 160 Ah
Bowthruster battery	4x 120 Ah (2017)
Battery charger	Mastervolt
Inverter	Mastervolt
Shorepower	with cable
Trimtabs	yes

## NAVIGATION

Compass	yes
Electric compass	Furuno FI-30 Multi Control
Depth sounder	Furuno FI-30 Multi Control
Log	Furuno FI-30 Multi Control



VHF	Furuno with distress
Autopilot	Furuno
Rudder angle indicator	Through autopilot
Radar	Furuno
Plotter	Furuno NAV net VX2
Searchlight	yes

## EQUIPMENT

Fixed windscreen	yes
Sun awning	yes
Winter cover	yes
Cockpit cushions	yes
Cockpit chairs	yes
Bathing platform	yes
Transom door	yes
Anchor	Bruce
Anchor chain	yes
Windlass	electrical
Deck wash	aft (hot and cold) and front (cold)
Dinghy	inflatable
Outboard	yes
Sea railing	stainless steel
Grab rail (superstructure)	stainless steel
Railing side opening gates	yes
Lifebuoy	yes
Wiper	yes
Window heating	yes
Horn	electric
Fenders	yes
Mooring lines	yes
TV	Samsung



TV receiver	Skymaster
Radio-cd player	Clarion
DVD player	LG
iPod connection	Clarion
Surround Sound System	LG
Sub-woofer	LG
Cockpit speakers	yes
Speakers in salon	yes
Clock - barometer	yes

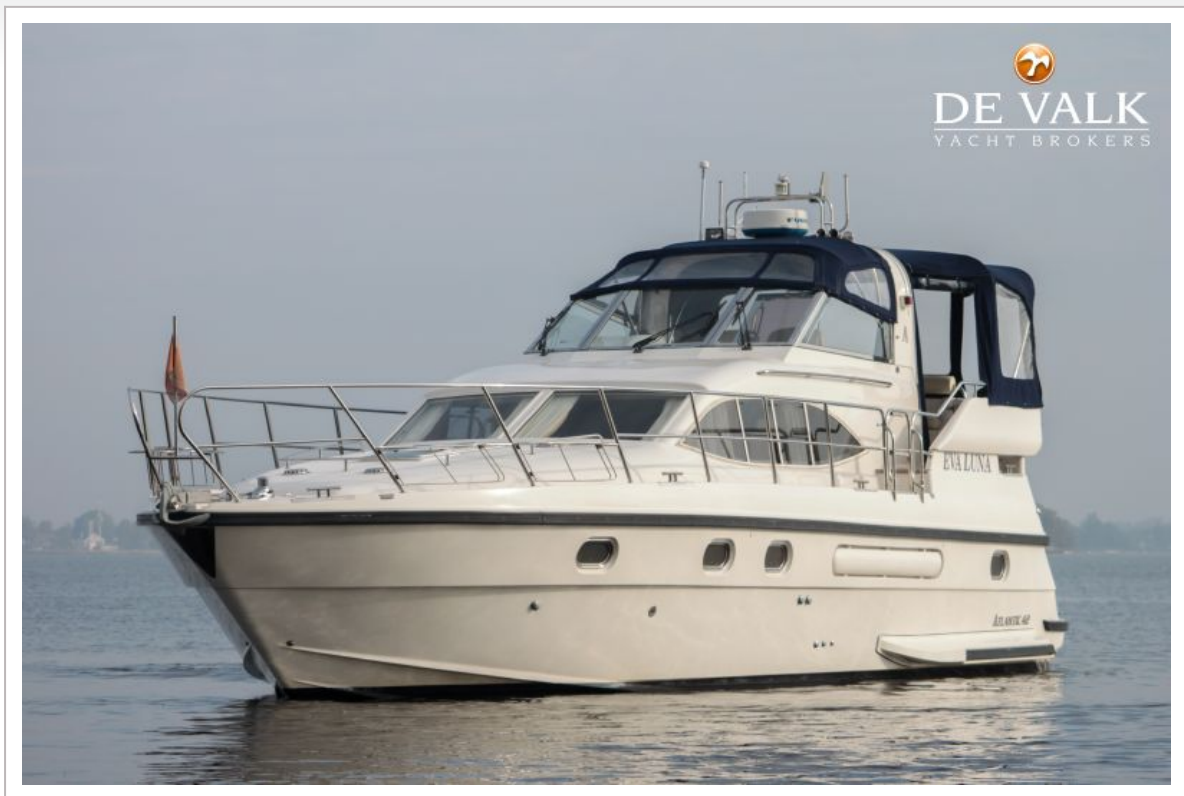




# ATLANTIC 42



# ATLANTIC 42



# ATLANTIC 42





# ATLANTIC 42

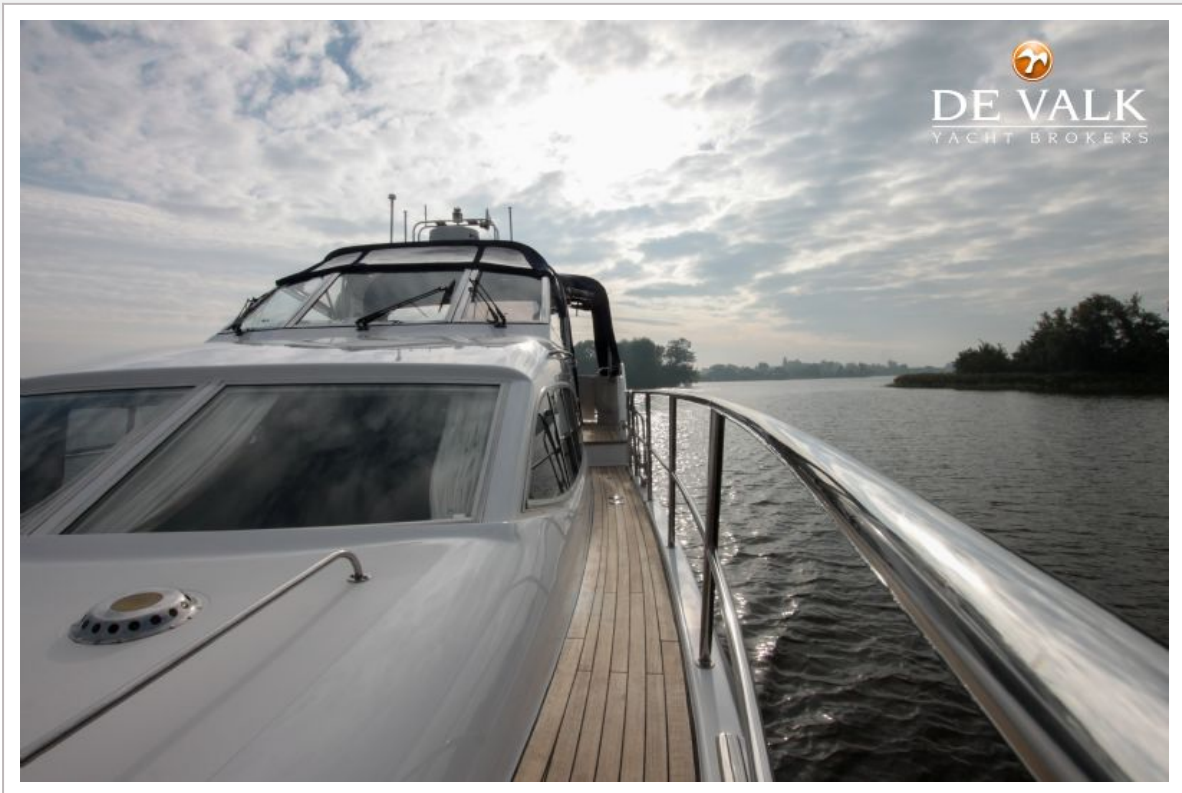


# ATLANTIC 42





# ATLANTIC 42



# ATLANTIC 42





# ATLANTIC 42





# ATLANTIC 42

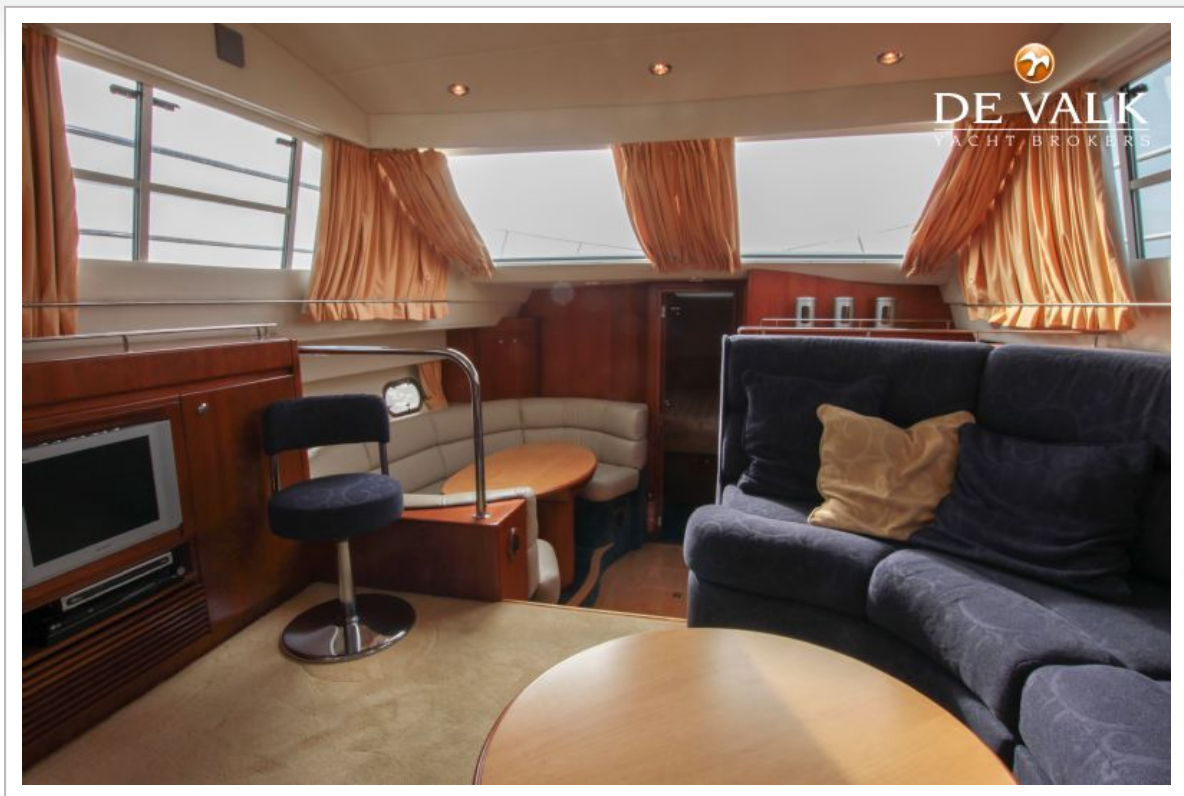


# ATLANTIC 42





# ATLANTIC 42



# ATLANTIC 42





# ATLANTIC 42

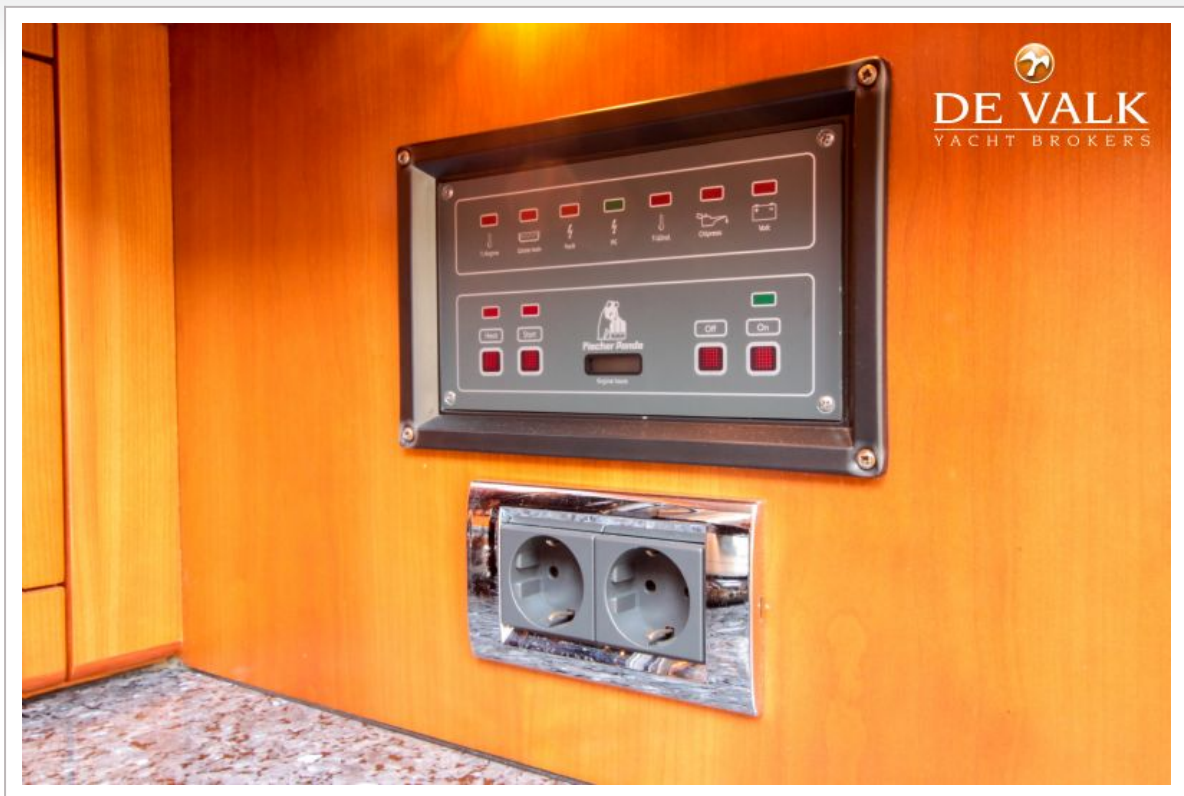


# ATLANTIC 42





# ATLANTIC 42

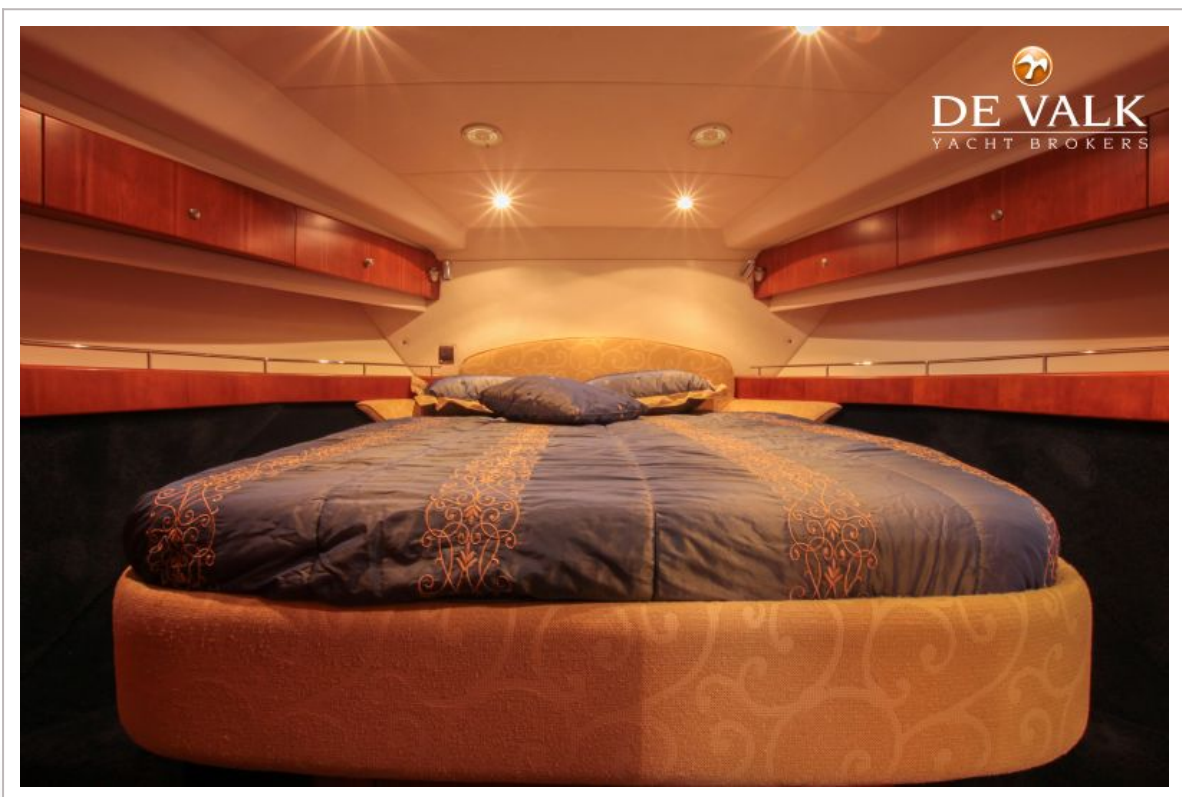
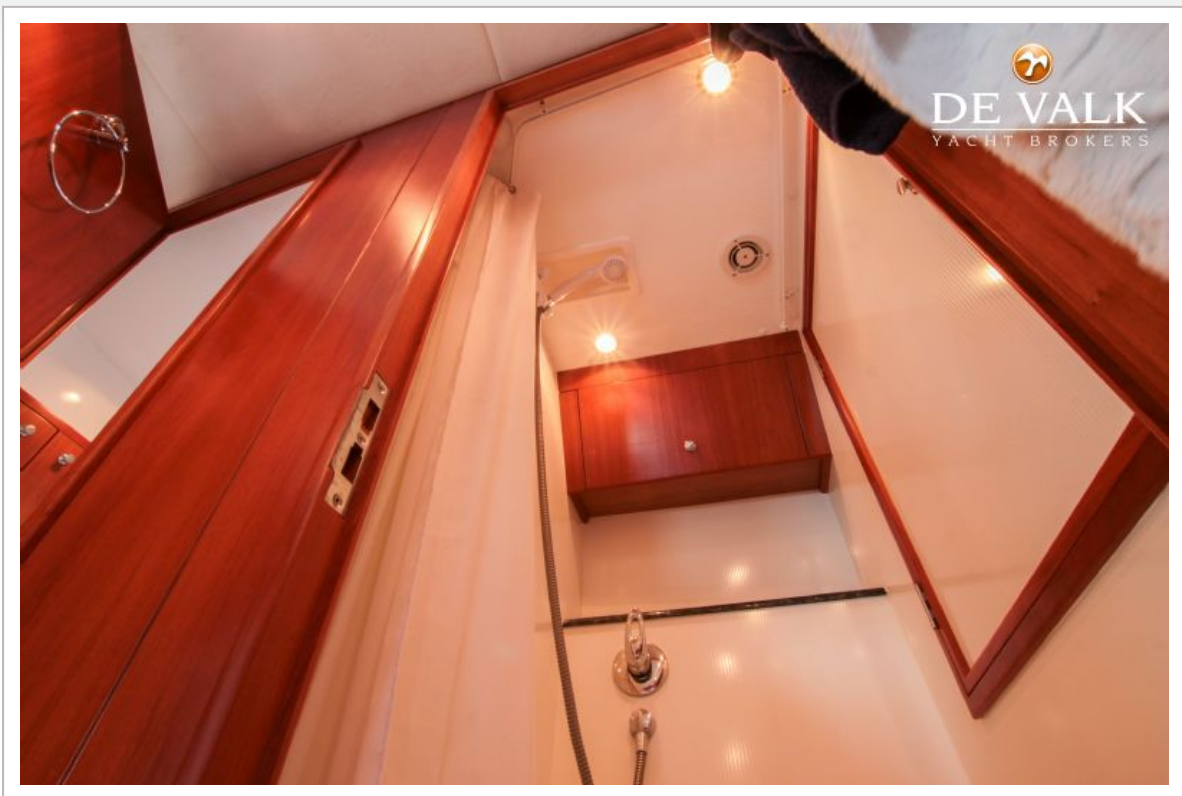


# ATLANTIC 42





# ATLANTIC 42



# ATLANTIC 42



