



SILVERSEA TRAWLER

SILVERSEA TRAWLER

BROKER'S COMMENTS

This Silversea Trawler is a very well maintained young trawler provided with all equipment you need for an extended stay on board, both at high seas and inland waterways. I.a. equipped with double glazing in aluminum frames, double steering position and 3 docking stations for steering outside, hydraulic bow- and stern thruster with joystick, generator and many navigation equipment. Surprisingly spacious yet below 15 meter and with a portugese bridge. Built by Jetten in Sneek for the owner who is selling her now.

Arne Doodeman

SPECIFICATIONS

Dimensions	14.98 x 4.90 x 1.45 (m)	Builder	Jetten yachting
Built	2006	Cabins	2
Material	Steel	Berths	5
Engine(s)	2 x Steyer M16TCAM diesel	Hp/Kw	2 x 165.99 (hp), 122.00 (kw)
Asking price	sold (VAT)	Lying	at sales office

CONTACT

Sales office	De Valk Sneek	Telephone	+31 (0)515 42 80 30
Address	Zwolsmanweg 7 8606 KC Sneek NL	E-mail	sneek@devalk.nl

DISCLAIMER

These particulars are given in good faith as supplied but cannot be guaranteed.



SILVERSEA TRAWLER

GENERAL

Model	SILVERSEA TRAWLER
Type	motor yacht Motor yacht
LOA (m)	14,98
LWL (m)	12,75
Beam (m)	4,90
Draft (m)	1,45
Air draft (m)	3,45
Headroom (m)	2,00
Year built	2006
Builder	Jetten yachting
Country	The Netherlands
Displacement (t)	35
CE norm	A A
Hull material	steel
Hull colour	grey Grey
Hull shape	hard chine
Superstructure material	steel
Deck material	steel
Deck finish	cork
Superstructure deck finish	cork
Cockpit deck finish	cork
Window frame	aluminum
Window material	double glazing
Portholes	yes
Insulation	foam Spray
Flybridge	yes
Mast can be lowered	hydraulic
Fuel tank (litre)	steel 4.300 in 2 tanks
Level indicator (fuel tank)	yes
Fuel daytank (litre)	Additional 200



SILVERSEA TRAWLER

Level indicator (daytank)	with gauge glass fitted to the day tank
Freshwater tank (litre)	stainless steel 1.200 in 2 tanks
Level indicator (freshwater)	yes
Blackwater tank (litre)	250
Level indicator (blackwater)	electronic
Blackwater tank extraction	deck extraction
Greywater tank (litre)	stainless steel 250
Level indicator (greywater)	yes
Wheel steering	hydraulic
Inside helm position	wheelsteering
Outside helm position	electric 3 docking stations
Flybridge helm position	hydraulic Wheelsteering
More info on paintwork	2 component epoxy

ACCOMMODATION

Cabins	2
Berths	5
Interior	mahogany
Open cockpit	yes
Pilot house/deck saloon	yes
Saloon	yes
Headroom saloon (m)	2,10
Heating	central hot water Kabola
Air-conditioning	reverse cycle airco
Sliding door to cockpit	yes
Galley	yes
Countertop	corian Blue
Sink	stainless steel Double
Cooker	electric Imperial
Oven	Siemens combi
Extractor	Berbel



SILVERSEA TRAWLER

Fridge	Miele 200 liter
Freezer	AEG 100 liter
Hot water system	on central heating
Water pressure system	electrical 24V
Dishwasher	Siemens
Owners cabin	french bed In the bow
Bed length (m)	2,00
Bathroom	en suite
Toilet	Electrically, flushed with fresh water
Toilet system	electric Hamann
Wash basin	in the bathroom
Shower	en suite
Bath tub	en suite
Guest cabin 1	bunk bed
Toilet	Electrically, flushed with fresh water
Toilet system	electric
Wash basin	in the bathroom
Shower	yes
Washing machine	yes
Dryer	yes
Extra info	filtered drinking water tap in galley

MACHINERY

No of engines	2
Make	Steyer
Type	M16TCAM
HP	165,99
kW	122,00
Fuel	diesel
Year installed	2006
Maximum speed (kn)	9



SILVERSEA TRAWLER

Cruising speed (kn)	7.50
Consumption (l/hr)	15.00
Range (nm)	1200
Engine hours	1200
Engine cooling system	freshwater heat exchanger
Drive	shaft
Engine controls	electrical
Bowthruster	hydraulic Joystick
Sternthruster	electric Joystick
Exhaust	watercooled
Thrust bearing	yes
Propeller shaft material	stainless steel
Shaft lubrication	water Profiseal
Electric bilge pump	3x automatic
Electrical installation	12/24 volt DC and 220 V AC
Generator	wet exhaust Fischer Panda DC-generator
Running hours generator	700
Start battery	2x Optima 56 Ah
Service battery	12x Delta 600 2,V cells 600 Ah
Generator battery	1x Optima 56 Ah
Battery monitor	BMV Victron
Battery charger	Victron Energy Phoenix 24/80 and 24/30 and 12/30
Inverter	Victron Energy 3x Phoenix 24/3000
Shorepower	with cable
Insulation transformer	Mastervolt 2 x 3,5 KW

NAVIGATION

Electric compass	Simrad IS 15
Depth sounder	Simrad IS 15
Log	Simrad IS 15
Repeater	Simrad IS 15



SILVERSEA TRAWLER

VHF	Simrad RS87
Autopilot	Simrad AP 25
Rudder angle indicator	Simrad IS 15
Radar/GPS	Simrad CX 44
Personal computer	Acer
Camera	3x with 2 monitors

EQUIPMENT

Cockpit cover	yes
Cockpit cushions	yes
Boarding ladder	yes
Transom door	yes
Deck shower	yes
Anchor	CQR Plough
Anchor chain	70 meter
Windlass	hydraulic With remote
Capstan	2x aft deck electric
Deck wash	yes
Deck crane	hydraulic Electric
Sea railing	stainless steel
Railing side opening gates	4x
Safety lines on deck	2x
Wiper	3x
Fenders	yes
Mooring lines	yes
Spare parts	yes
TV	LG
TV receiver	DVB-S Technisat
Satellite	TV-Simrad
DVD player	Denon
Surround Sound System	Elac and Denon



SILVERSEA TRAWLER

Sub-woofer	yes
Cockpit speakers	yes
Speakers in salon	yes
Speakers in cabin	yes
Fire extinguisher	powder or foam
Extinguisher in engine room	fixed automatic system Fire Pro
Extra info	3 Mini disc players installed

RIGGING

Extra info	yes
------------	-----



SILVERSEA TRAWLER



SILVERSEA TRAWLER



SILVERSEA TRAWLER



SILVERSEA TRAWLER



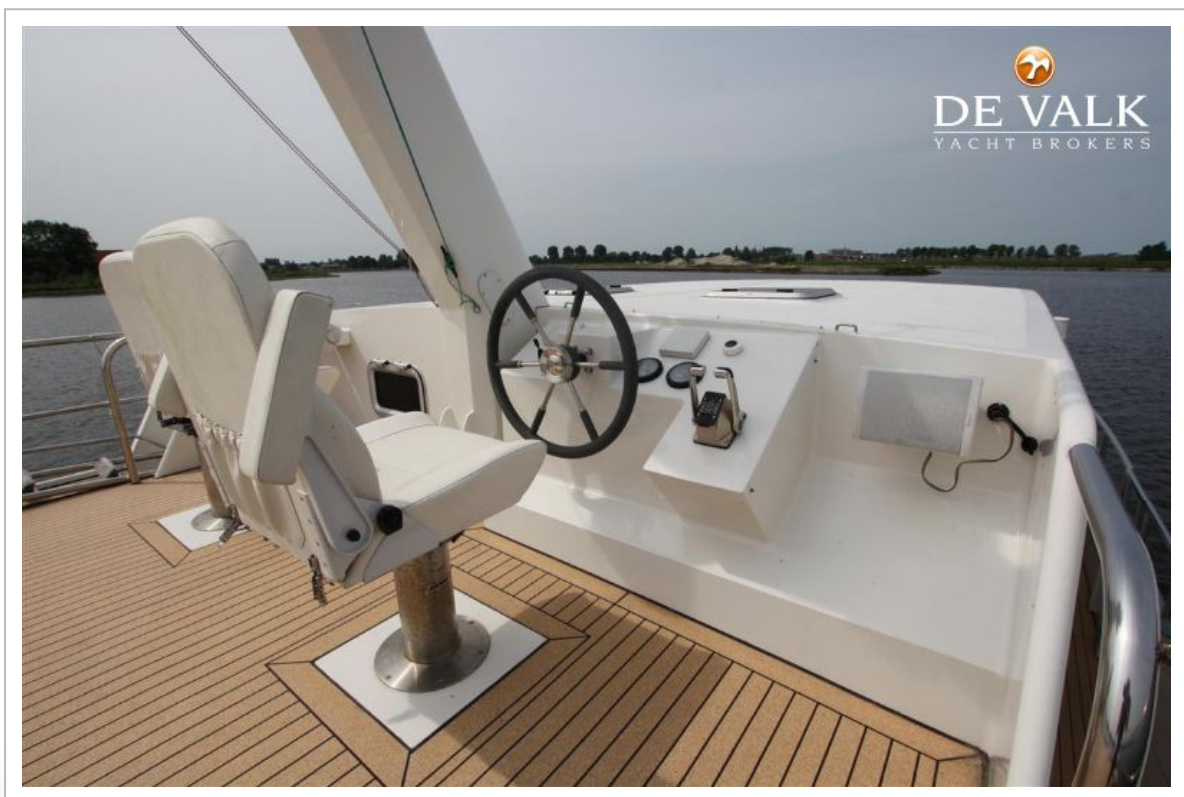
SILVERSEA TRAWLER



SILVERSEA TRAWLER



SILVERSEA TRAWLER



SILVERSEA TRAWLER



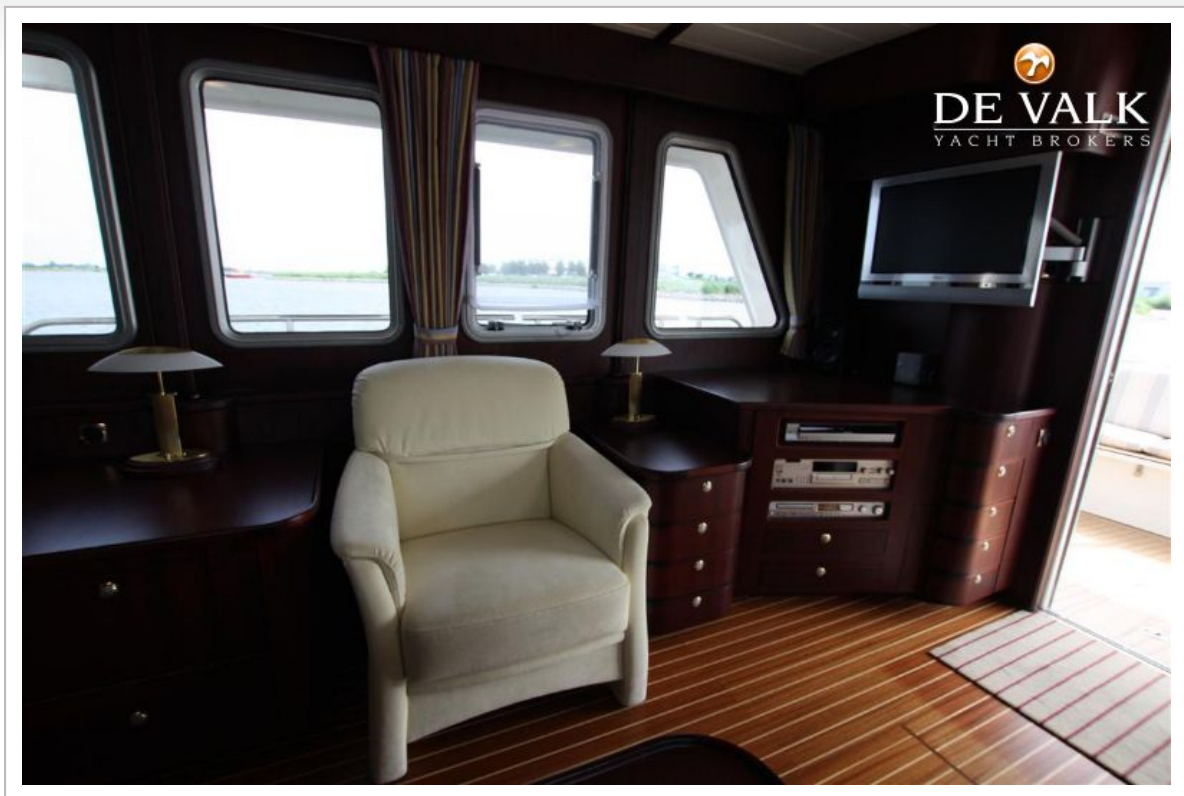
SILVERSEA TRAWLER



SILVERSEA TRAWLER



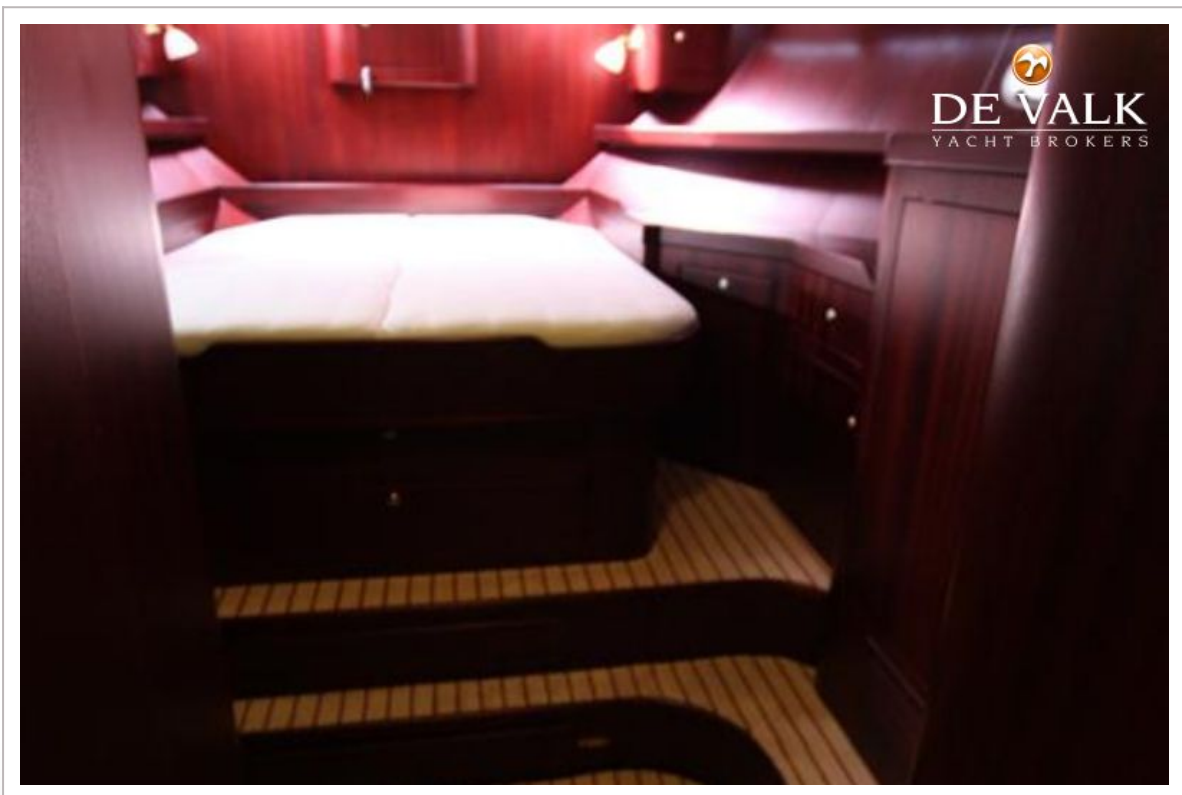
SILVERSEA TRAWLER



SILVERSEA TRAWLER



SILVERSEA TRAWLER



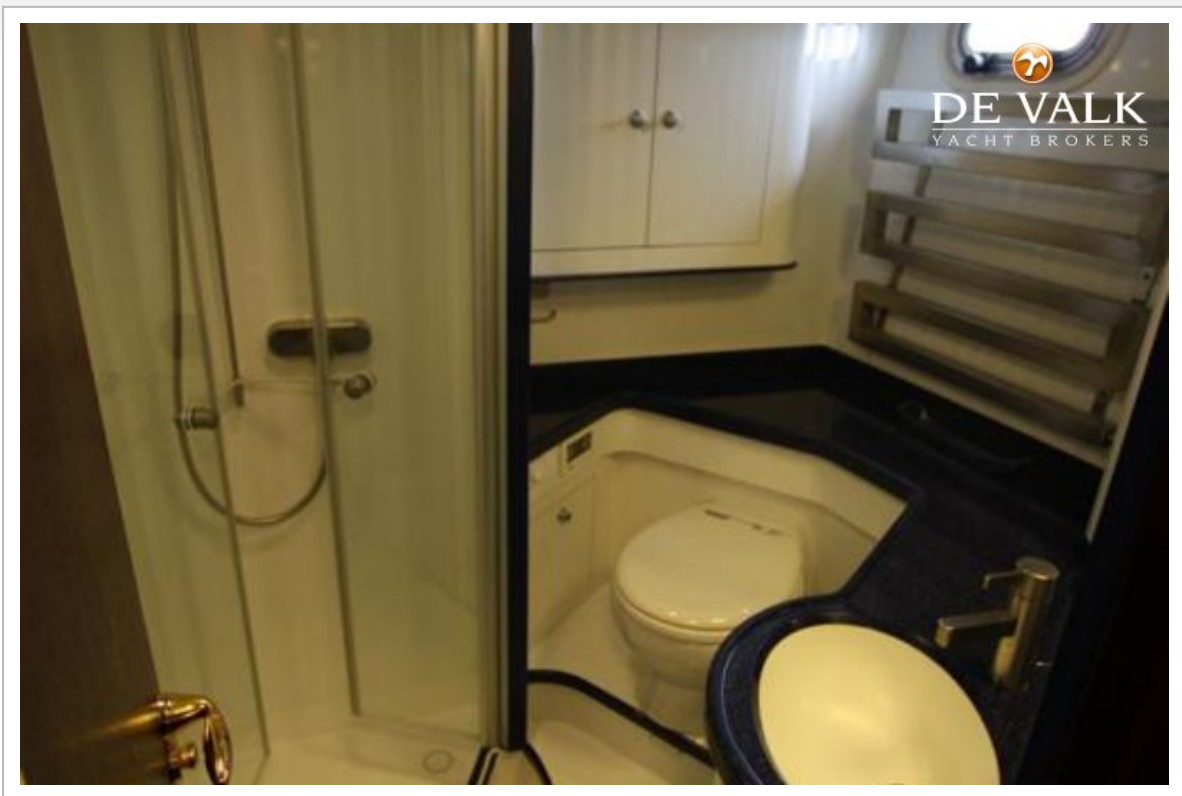
SILVERSEA TRAWLER



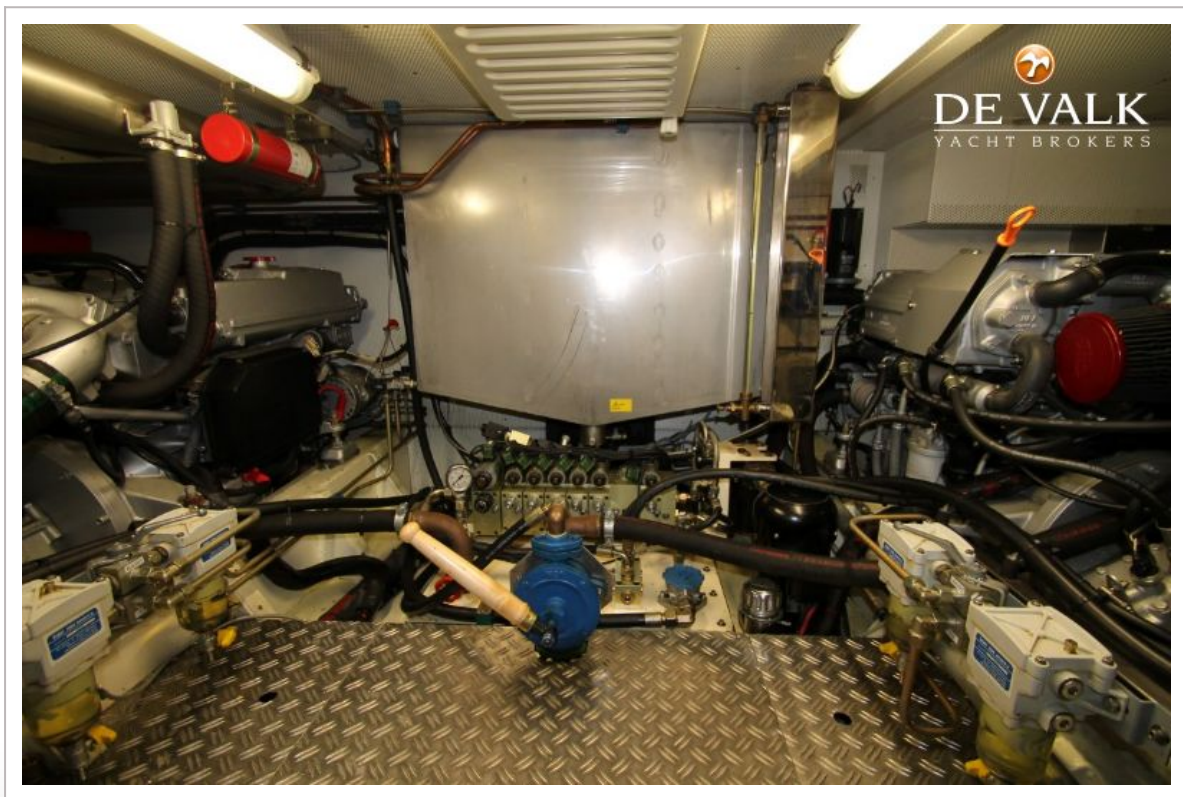
SILVERSEA TRAWLER



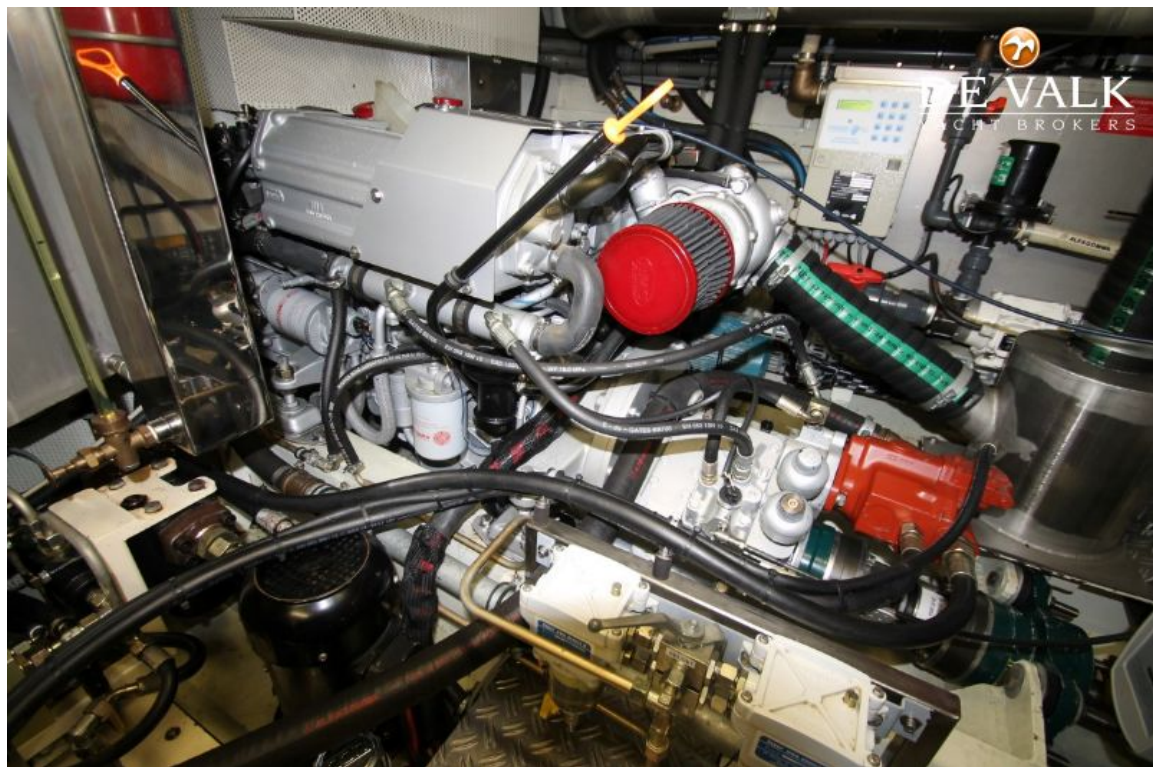
SILVERSEA TRAWLER



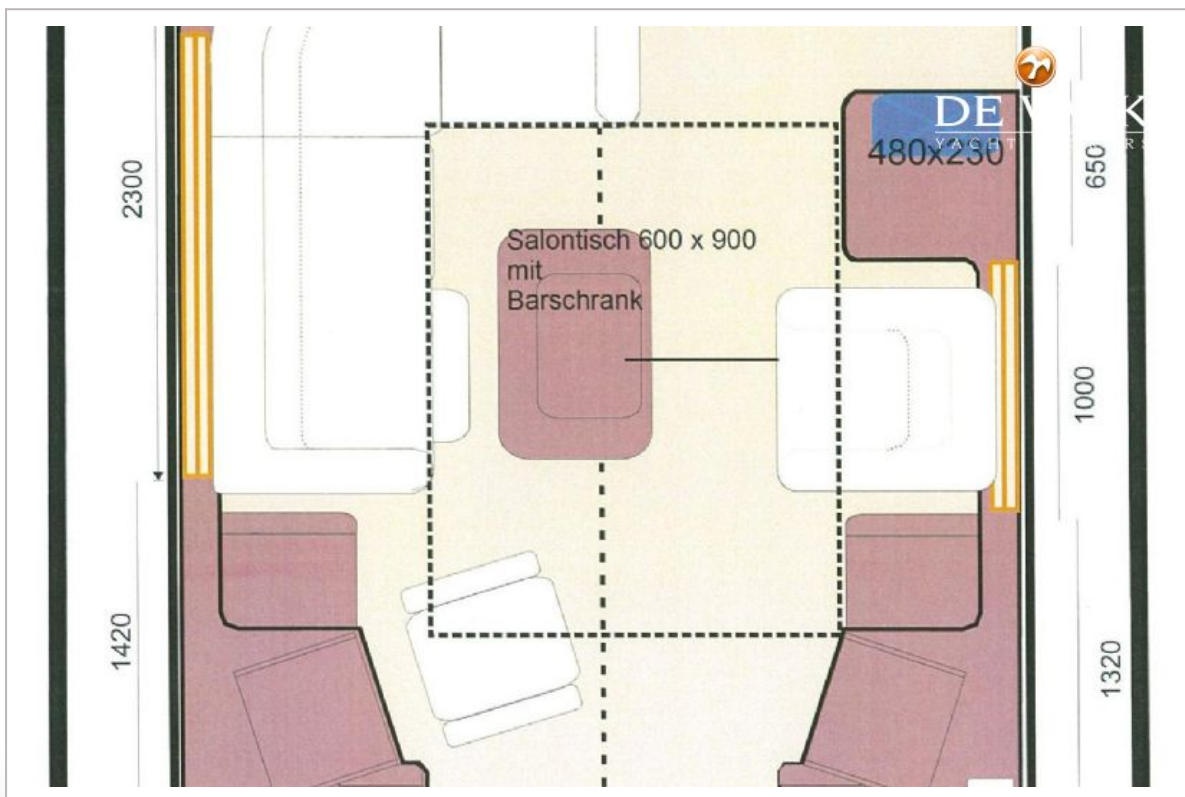
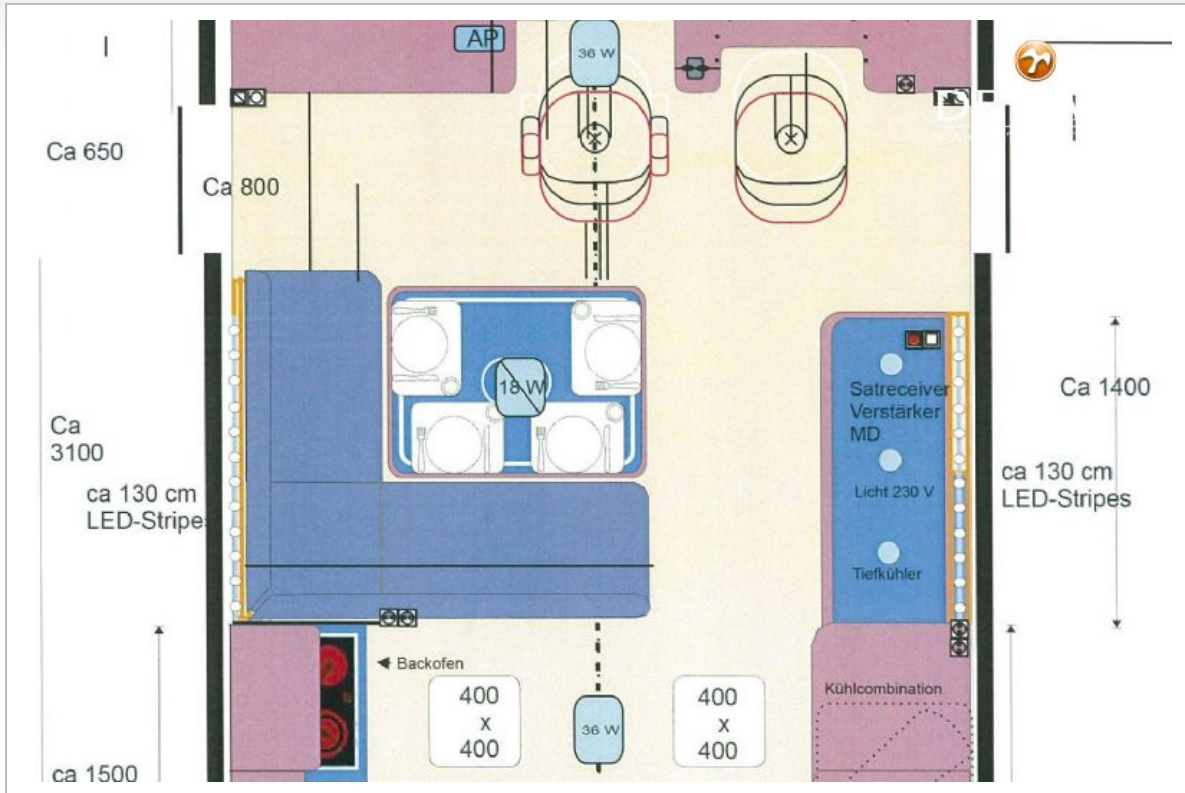
SILVERSEA TRAWLER



SILVERSEA TRAWLER



SILVERSEA TRAWLER



SILVERSEA TRAWLER

