



JETTEN CUSTOM SHOOTING BRAKE

JETTEN CUSTOM SHOOTING BRAKE

BROKER'S COMMENTS

"Fidelio" build for an experienced owner where the first ideas where to build a twin screw semi planning ocean going yacht with an open transom stern. Jetten and Vripack made this owners which come true. Inspired by a Mercedes Shooting Brake, with a very comfortable atmosphere, easy handling, very low noise levels a true one of kind that is now offered for sale by her first owner. Moored in Sneek in our covered sales marina you are most welcome for an inspection.

Pieter Bosma

SPECIFICATIONS

Dimensions	17.54 x 5.03 x 1.35 (m)	Builder	Jetten Jachtbouw BV
Built	2013	Cabins	2
Material	Steel	Berths	4
Engine(s)	2 x Caterpillar CAT C9 Acert diesel	Hp/Kw	2 x 575.00 (hp), 423.20 (kw)
Asking price	€ 995.000 (VAT Paid)	Lying	at sales office

CONTACT

Sales office	De Valk Sneek	Telephone	+31 (0)515 42 80 30
Address	Zwolsmanweg 7 8606 KC Sneek NL	E-mail	sneek@devalk.nl

DISCLAIMER

These particulars are given in good faith as supplied but cannot be guaranteed.



JETTEN CUSTOM SHOOTING BRAKE

GENERAL

Model	JETTEN CUSTOM SHOOTING BRAKE
Type	motor yacht
LOA (m)	17,54
Beam (m)	5,03
Draft (m)	1,35
Air draft (m)	3,60
Headroom (m)	2,05
Year built	2013
Builder	Jetten Jachtbouw BV
Country	The Netherlands
Designer	Vripack
Displacement (t)	45
CE norm	A
Hull material	steel
Hull colour	silver gray
Hull thickness (mm)	5 mm keel 8 mm
Hull shape	Fast Displacement Hull
Keel type	long keel
Superstructure material	steel Roof in Alluminium
Superstructure (mm)	4 mm
Deck plate thickness (mm)	4 mm
Rubbing strake	stainless steel
Deck material	steel
Deck finish	cork
Superstructure deck finish	paint
Cockpit deck finish	teak
Antifouling (year)	2024
Dorades	yes
Window frame	Glued Windows
Window material	double glazing



JETTEN CUSTOM SHOOTING BRAKE

Deckhatch	Gebo
Portholes	aluminium
Insulation	foam
Mast can be lowered	hydraulic
Fuel tank (litre)	5290 Ltr
Level indicator (fuel tank)	electronic and glass
Fuel daytank (litre)	yes
Freshwater tank (litre)	1760 Ltr
Level indicator (freshwater)	yes
Blackwater tank (litre)	721 ltr
Level indicator (blackwater)	yes
Blackwater tank extraction	deck extraction + pump
Wheel steering	hydraulic
Inside helm position	yes
Outside helm position	yes
More info on hull	Steel hull, and superstructure, Aluminium roof
Extra info	Heavy watertight pantograph doors on both sides of the pilothouse
Extra info	Hamann marine sanitation device for cleaning waste from the blackwater tank

ACCOMMODATION

Cabins	2
Berths	4
Interior	mahogany
Floor	vinyl
Aft deck	Large covered aftdeck with nice settee and second steering position
Pilot house	yes
Deck saloon	yes
Headroom saloon (m)	2.05 m.
Heating	central heating Kabola KB45



JETTEN CUSTOM SHOOTING BRAKE

Air-conditioning	reverse cycle airco Climma CWS 201 in pilothouse, salon, and owners cabin
Sliding door to aft deck	yes
Galley	yes
Countertop	granite
Sink	stainless steel Double
Cooker	induction Neff 4 zone
Extractor	Berbel
Microwave/oven combi	Siemens
Fridge	3 drawers Siemens
Freezer	2 drawers freezing and a large cooling compartment Miele Fridge Freezer combi
Hot water system	on central heating + Cooker
Water pressure system	electrical
Dishwasher	Siemens
Hot water tap	yes
Owners cabin	French bed
Bed length (m)	2.10 x 1.40 m
Wardrobe	hanging/drawers/shelves
Bathroom	en suite
Toilet	en suite
Toilet system	electric
Wash basin	in the bathroom
Shower	en suite
Bath tub	en suite
Guest cabin 1	bunk bed
Bed length (m)	2.00 x 0.80 m
Wardrobe	shelves
Bathroom	separate
Toilet	separate
Toilet system	electric
Wash basin	in the bathroom



JETTEN CUSTOM SHOOTING BRAKE

Shower	separate
Washing machine	Miele W5964
Dryer	Miele T8968
Tender garage	Hatch can be opened Hydraulic

MACHINERY

No of engines	2
Make	Caterpillar
Type	CAT C9 Acert
HP	575
kW	423.20
Fuel	diesel
Year installed	2013
Maximum speed (kn)	14
Cruising speed (kn)	9.00
Range (nm)	5000
Engine hours	1441
Engine cooling system	freshwater heat exchanger
Drive	shaft
Shaft seal	Amartech Axiseal
Engine controls	electrical ZF
Gearbox	hydraulic ZF
Bowthruster	hydraulic
Sternthruster	hydraulic
Exhaust	watercooled
Thrust bearing	yes
Propeller type	fixed
Propeller shaft material	stainless steel Duplex 4462 60 mm
Shaft lubrication	water
Electric bilge pump	yes
Bilge alarm	yes



JETTEN CUSTOM SHOOTING BRAKE

Electrical installation	24-240V
Generator	Mastervolt Whisper 8 Ultra
Batteries	yes
Start battery	2x 260 Ah Zenith
Service battery	mounted in a steel box under the ownersbed 12x - 2V Mastervolt total 1000 Ah
Generator battery	1x 100 Ah Red Top
Battery monitor	Victron
Battery charger	Victron Blue Power 12-15
Battery charger/inverter	Victron Multiplus 24/3000/70 2x Victron Quatro 24/5000/120
Solar panel	6 large solarpanels with Mppt controler
Diode battery combiners	yes
Shorepower	with cable
Insulation transformer	Victron
Watermaker	Offshore Marine SOB 160
Stabilizers	fin Naiad Multisea II Hydraulic
Trimtabs	yes
Extra info	Halyard Exhaust alarm
Extra info	Fuel Polisch SYA HT8005 and an Anti Algea X fuel Polisch
Extra info	Engine have been checked and fully serviced by Pon Power September 2025.

NAVIGATION

Compass	Cassens & Plath
Electric compass	Simrad RC 42-1 Rate Compass
Multi control display	3x Simrad IS40 diplays
Depth sounder	yes
Log	yes
VHF	Simrad RS 87 DSC
Autopilot	Simrad AP80 + joystick FU80
Rudder angle indicator	yes
Radar	Simrad RI-10



JETTEN CUSTOM SHOOTING BRAKE

Radar/GPS/plotter	a screen at the in and ouside helm position Simrad
AIS transceiver	Simrad N AIS 500
Radio receiver	GMDSS marine Radio FMD55P
Camera	4x
Navigation lights	LED
Searchlight	ITT with remote control

EQUIPMENT

Cockpit cover	yes
Cockpit cushions	yes
Cockpit table	yes
Cockpit chairs	yes
Bathing platform	Hydrasulic lowerable
Gangway	Berenzoni
Deck shower	yes
Anchor	CQR Plough
Anchor chain	yes
Windlass	Maxwell 3500
Capstan	2x Maxwell
Deck wash	yes
Sea railing	stainless steel
Railing side opening gates	yes
Life raft	Safeguard
Life raft (pers)	6
Last life raft survey	11-2024
Wiper	3x
Horn	yes
Fenders	yes
Mooring lines	yes
Speakers in salon	yes
Speakers in cabin	yes



JETTEN CUSTOM SHOOTING BRAKE

Clock - barometer

Auto extinguisher system

Simrad weatherstation sensor Wempe

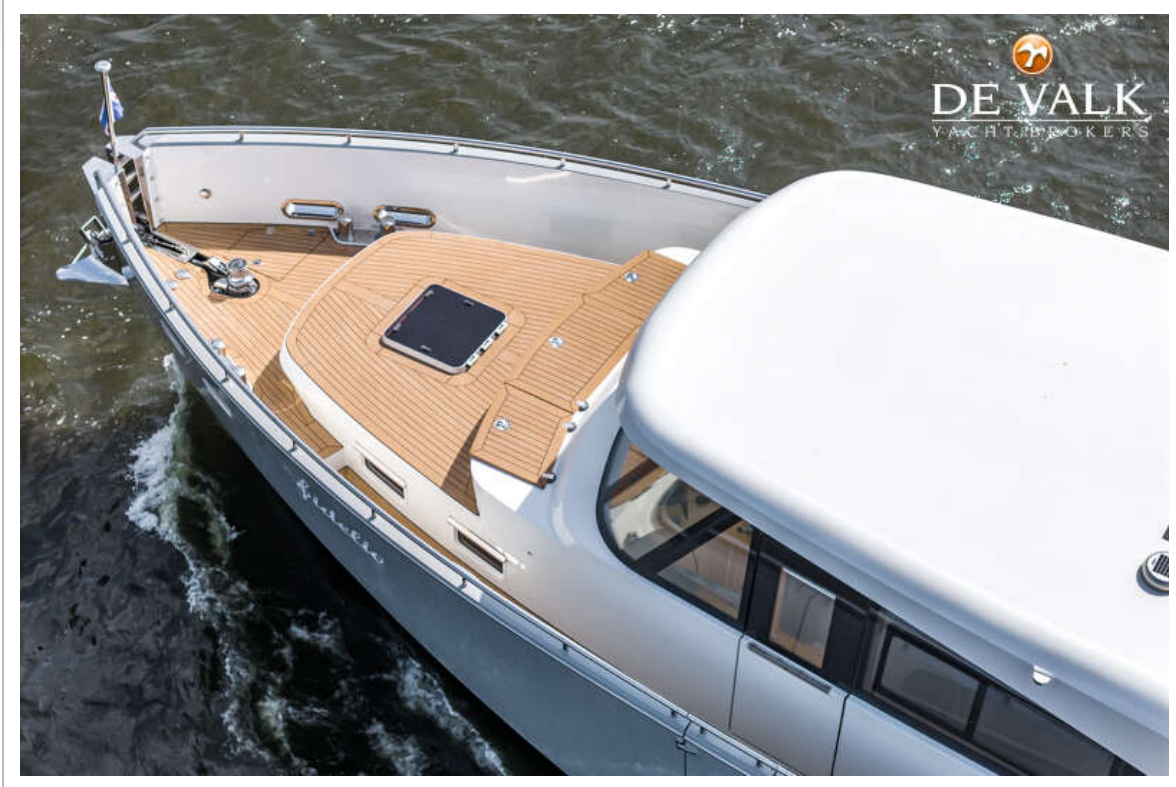
Seafire with control at the steering position



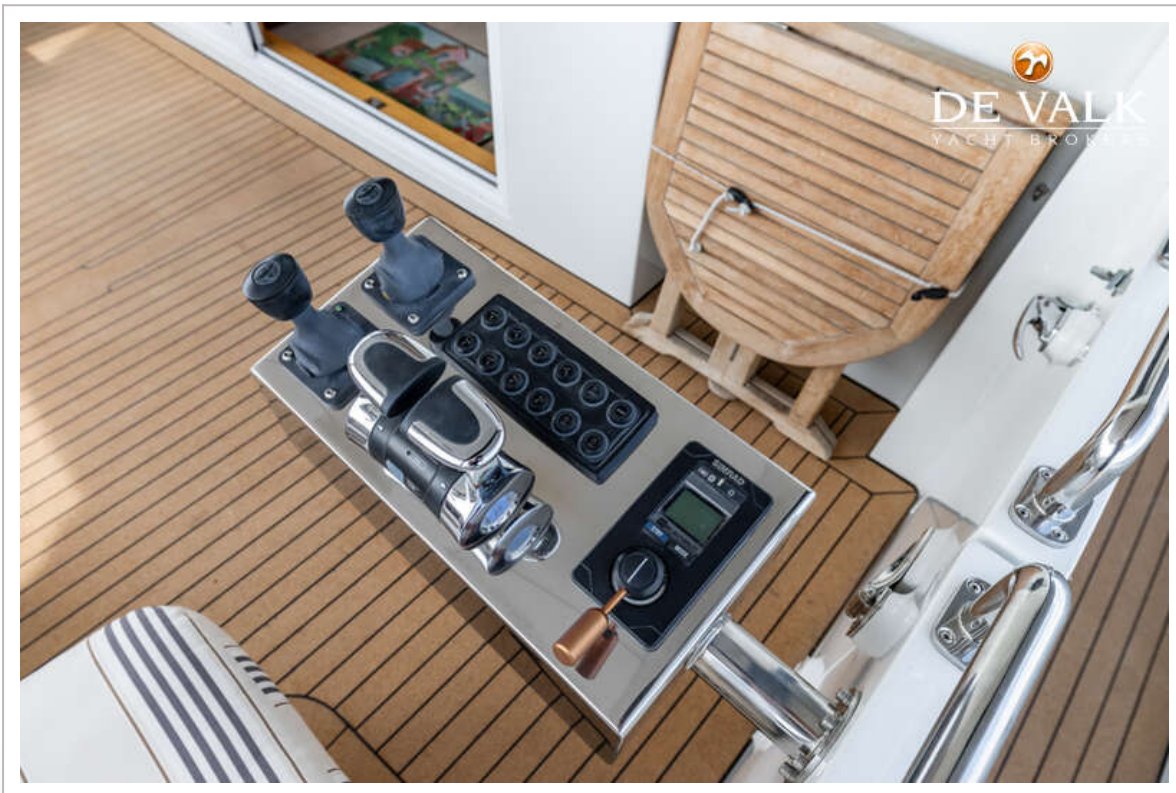
JETTEN CUSTOM SHOOTING BRAKE



JETTEN CUSTOM SHOOTING BRAKE



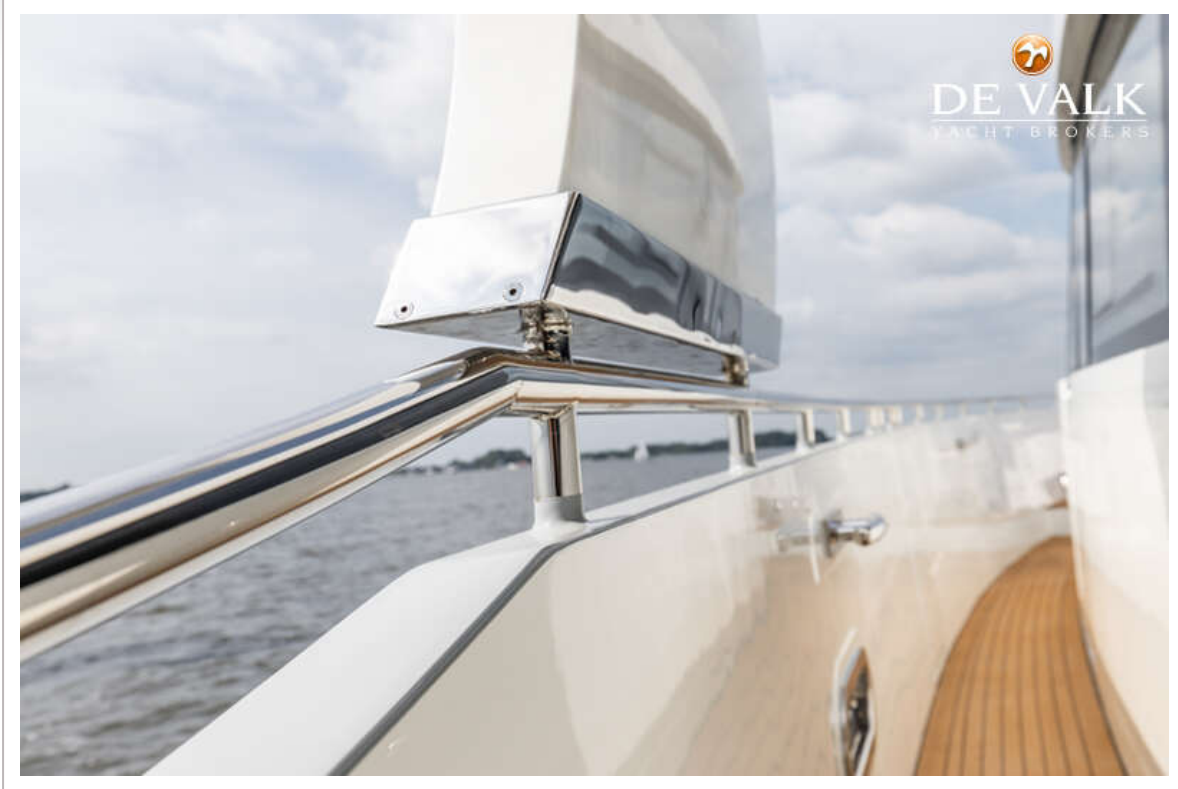
JETTEN CUSTOM SHOOTING BRAKE



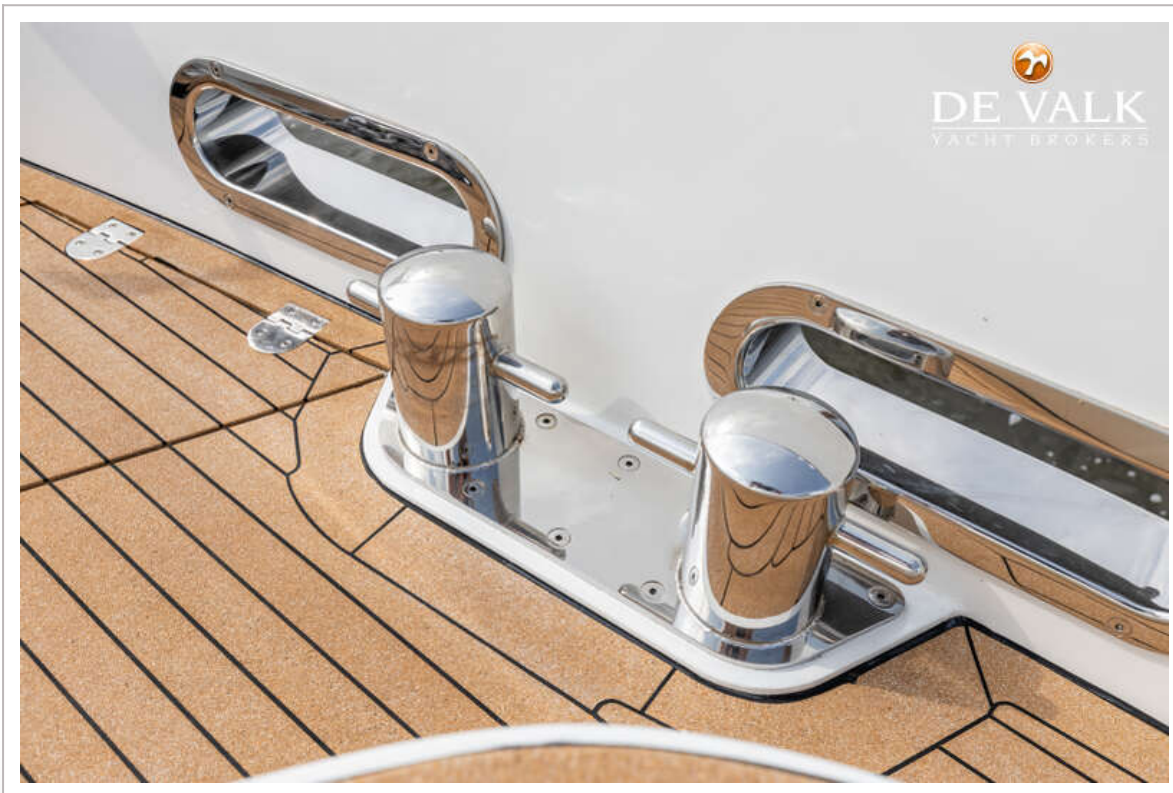
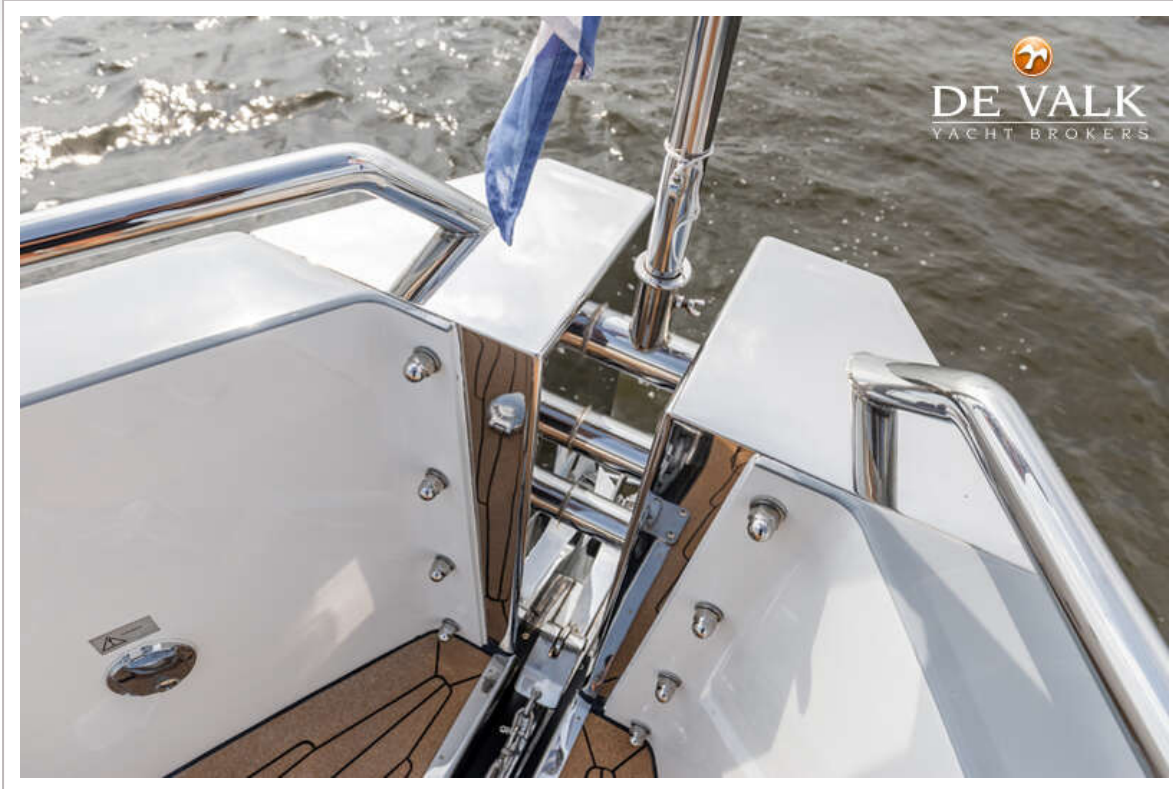
JETTEN CUSTOM SHOOTING BRAKE



JETTEN CUSTOM SHOOTING BRAKE



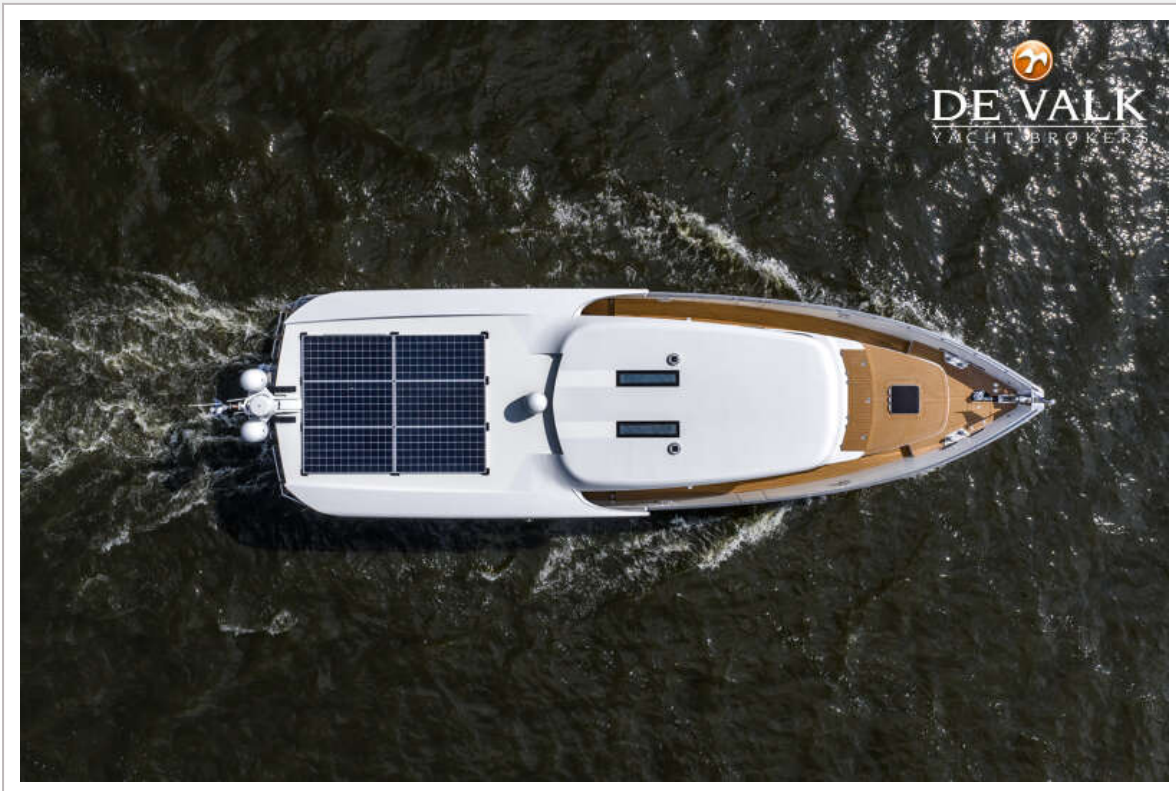
JETTEN CUSTOM SHOOTING BRAKE



JETTEN CUSTOM SHOOTING BRAKE



JETTEN CUSTOM SHOOTING BRAKE



JETTEN CUSTOM SHOOTING BRAKE



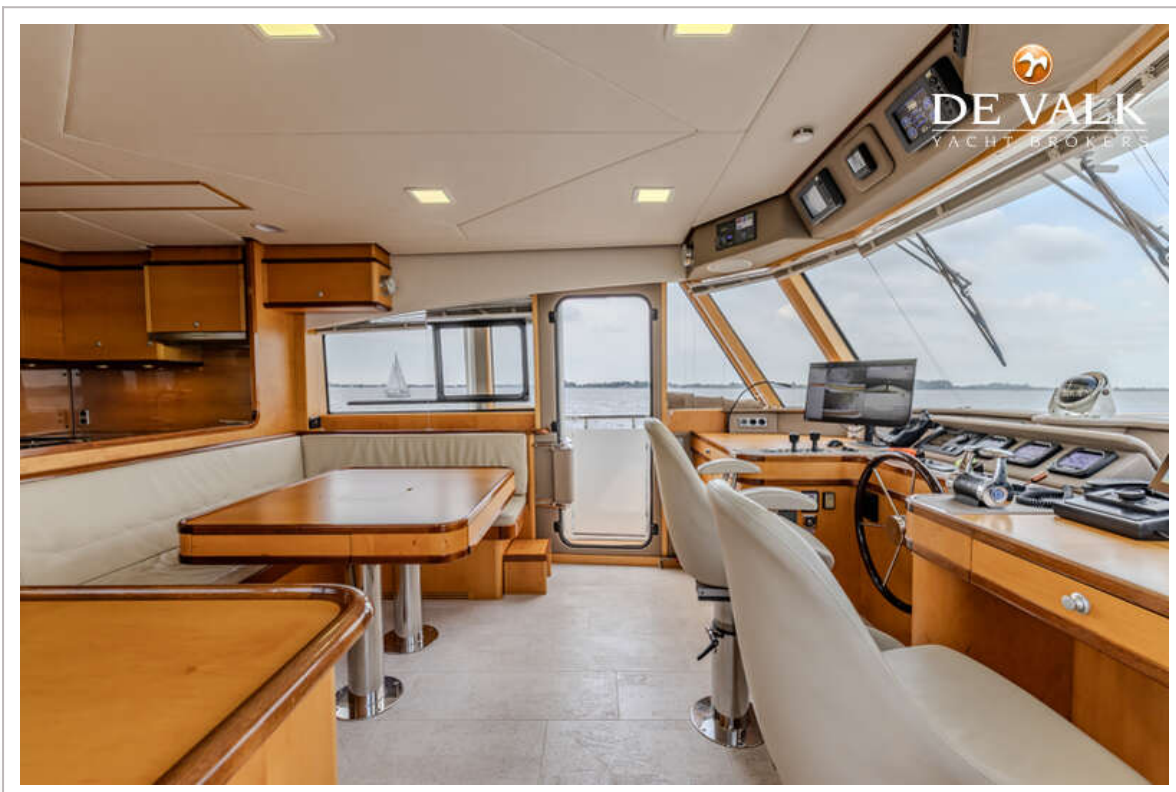
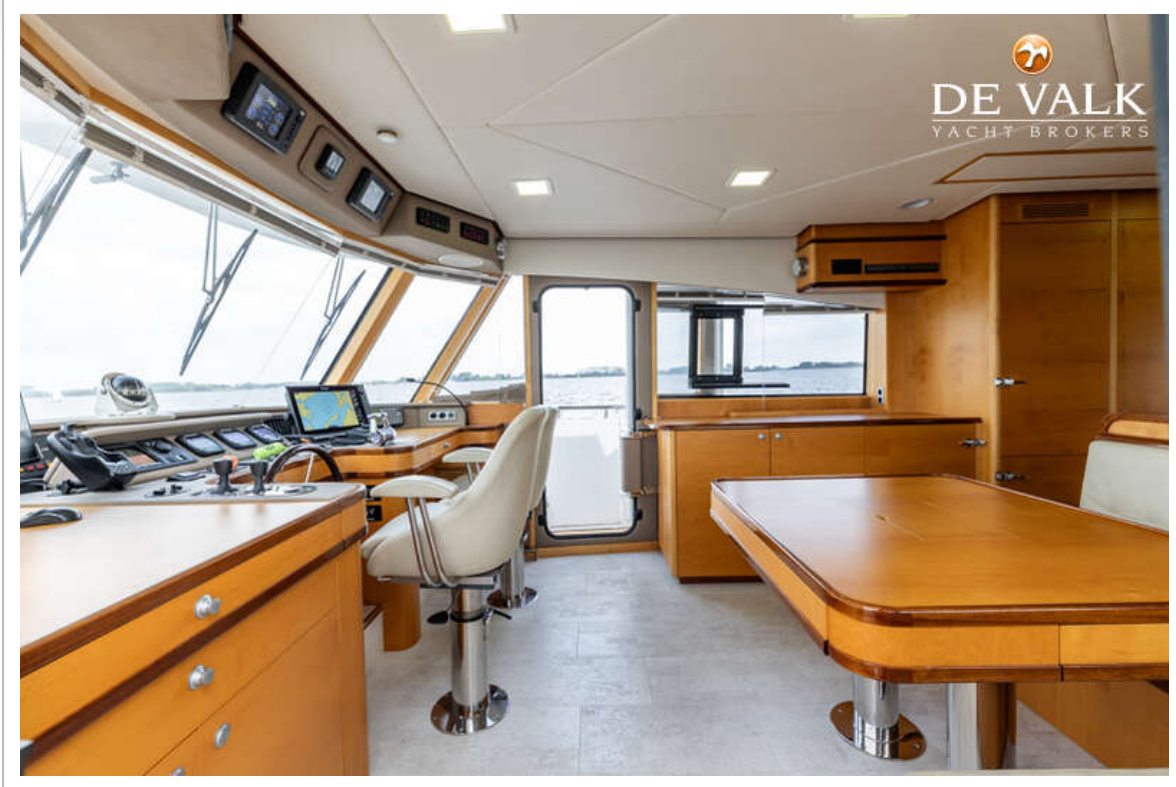
JETTEN CUSTOM SHOOTING BRAKE



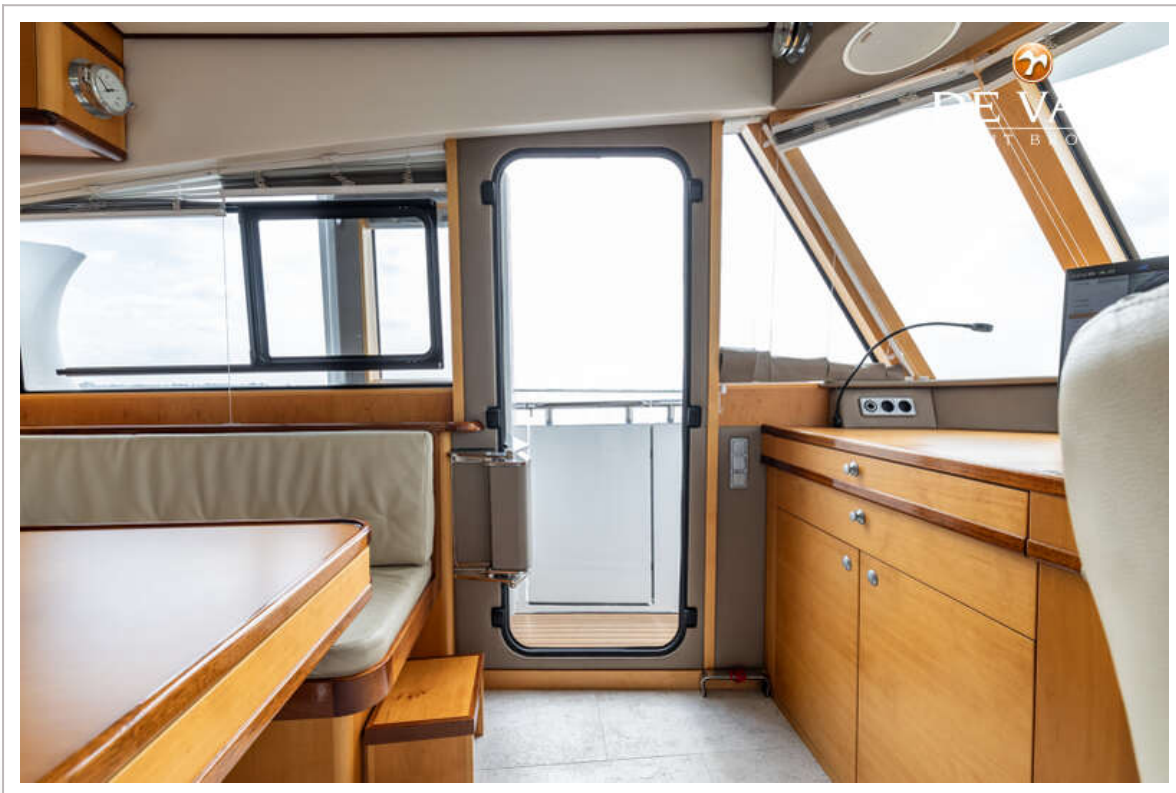
JETTEN CUSTOM SHOOTING BRAKE



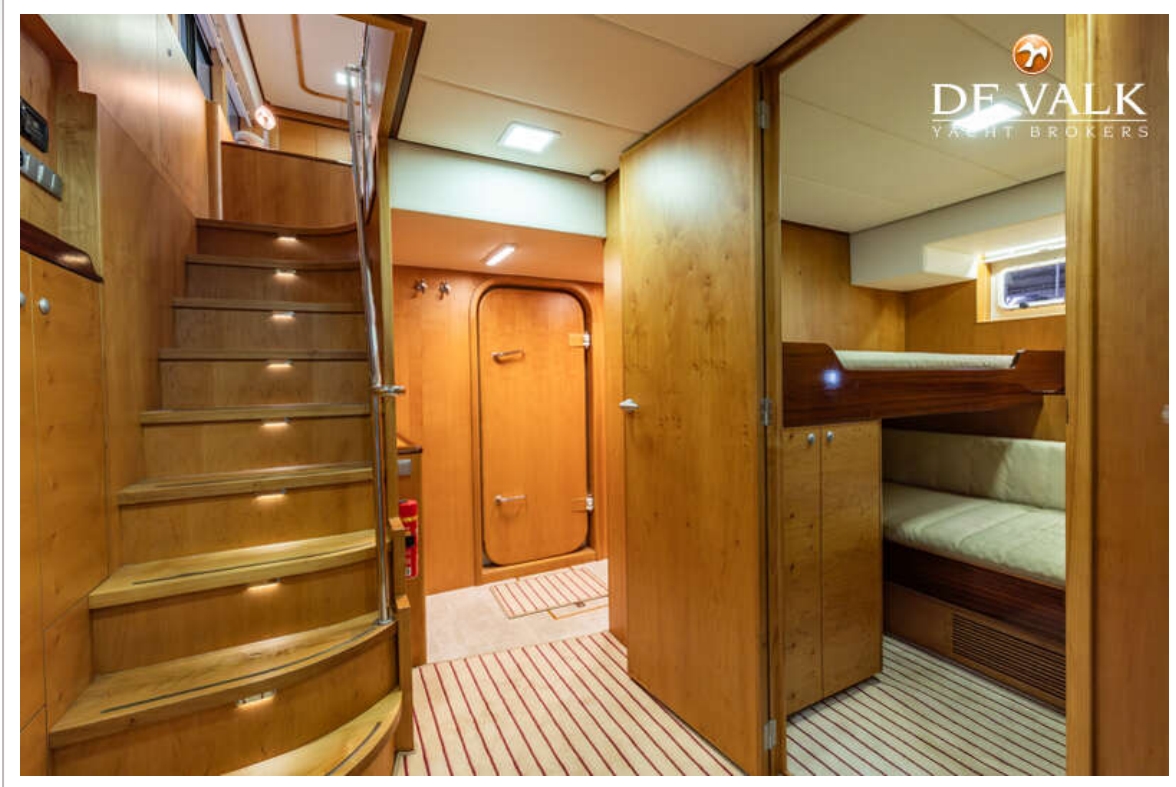
JETTEN CUSTOM SHOOTING BRAKE



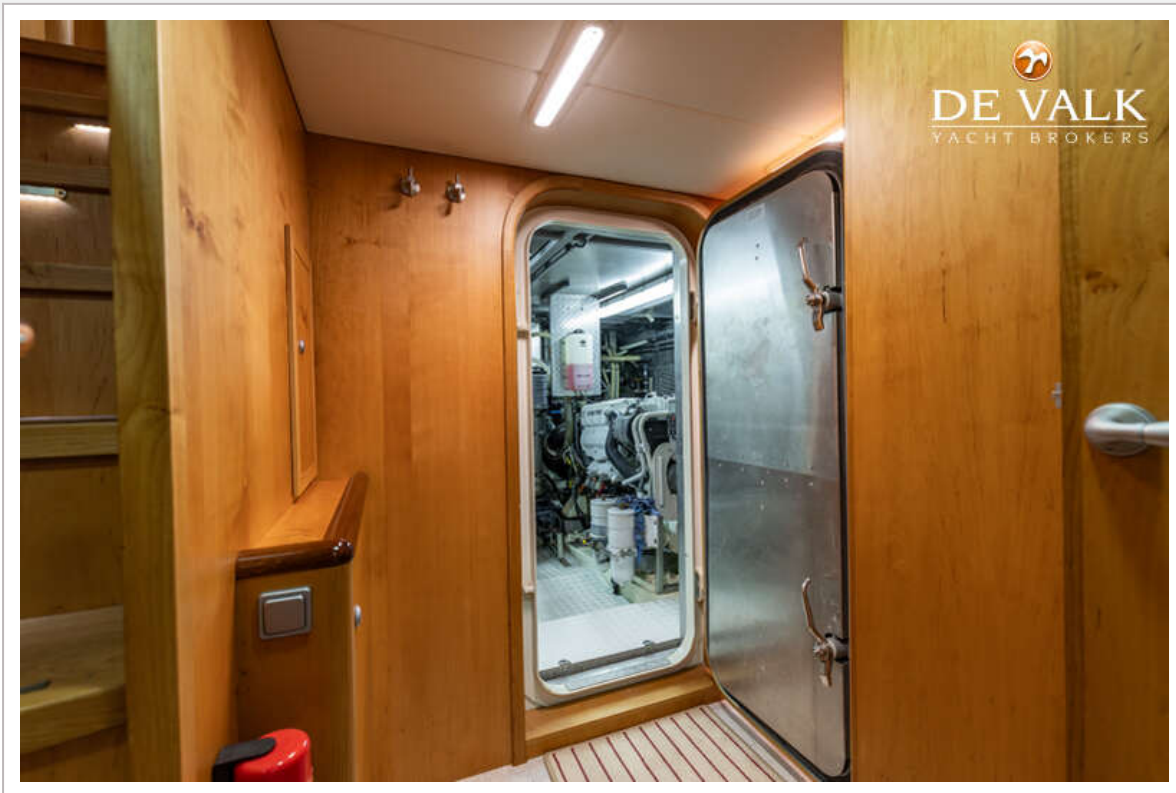
JETTEN CUSTOM SHOOTING BRAKE



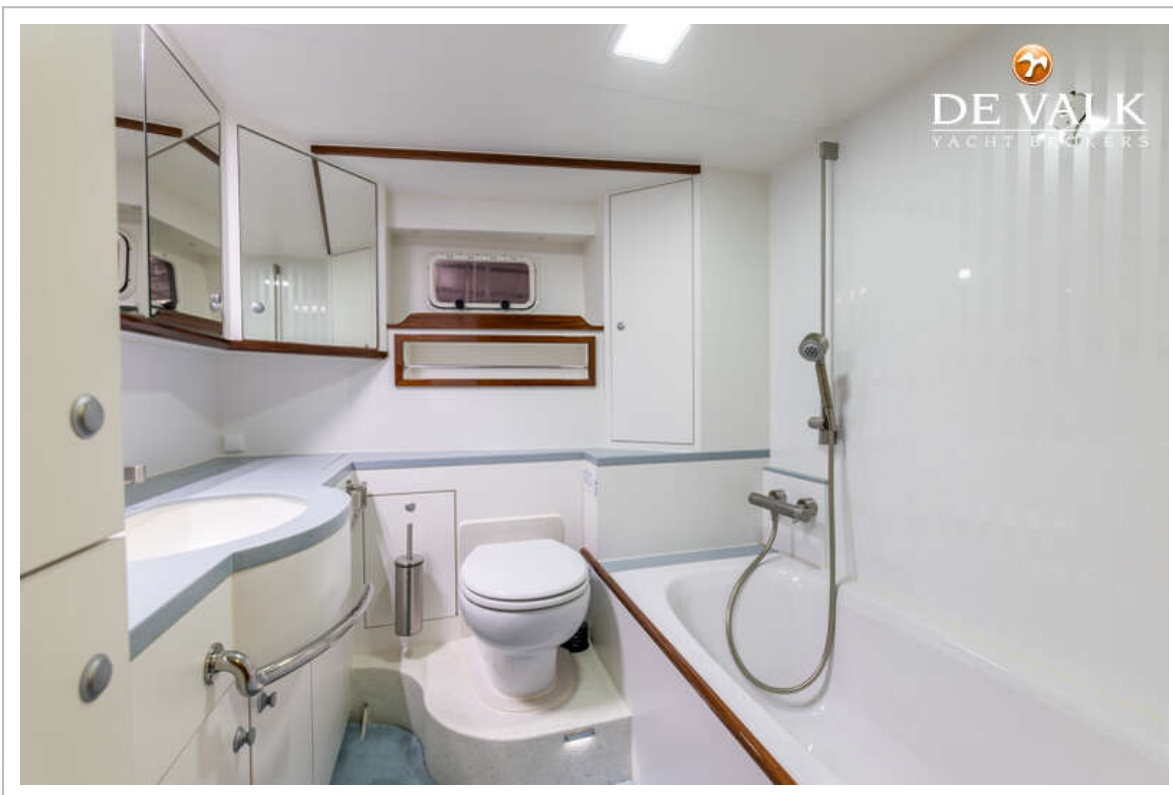
JETTEN CUSTOM SHOOTING BRAKE



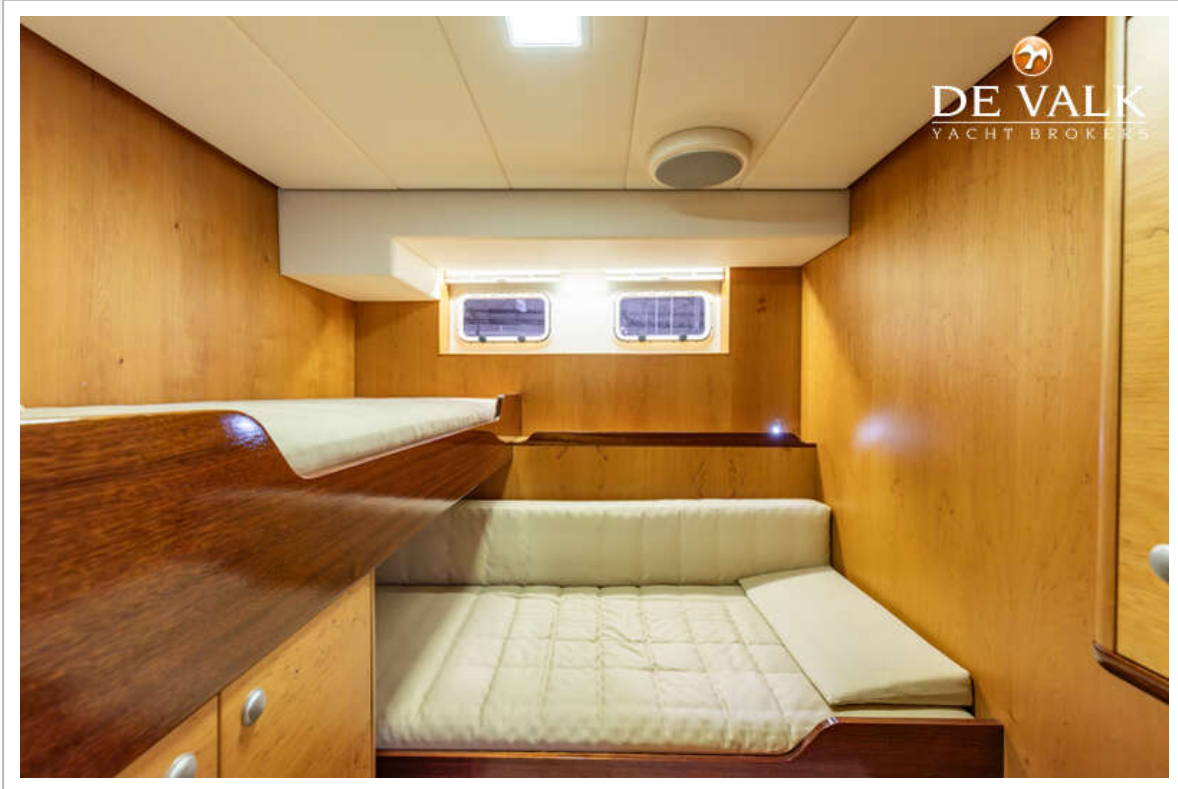
JETTEN CUSTOM SHOOTING BRAKE



JETTEN CUSTOM SHOOTING BRAKE



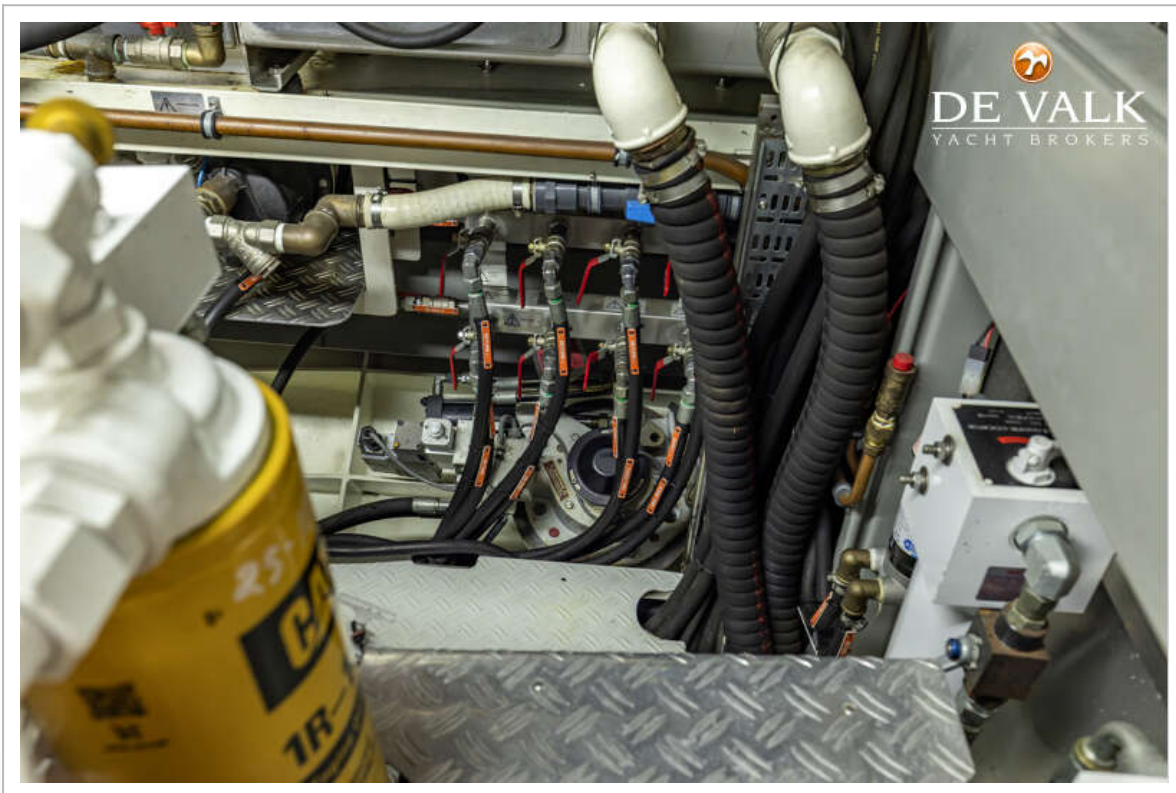
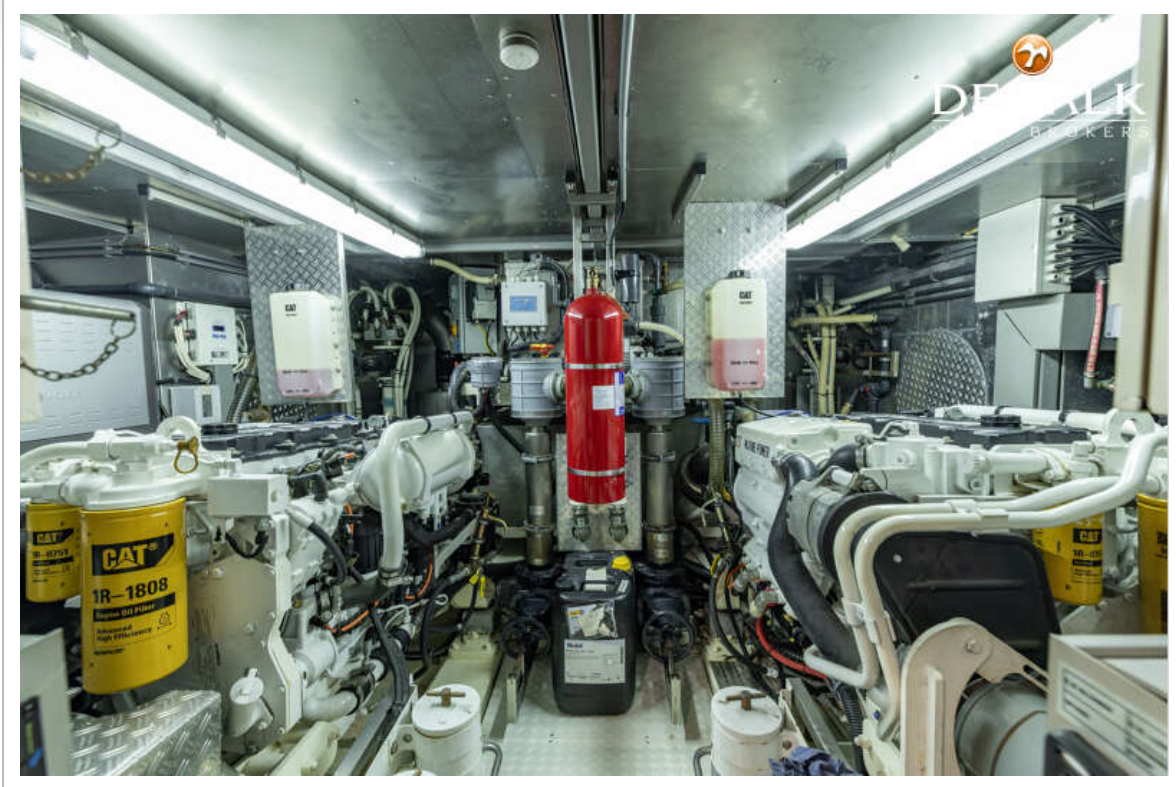
JETTEN CUSTOM SHOOTING BRAKE



JETTEN CUSTOM SHOOTING BRAKE



JETTEN CUSTOM SHOOTING BRAKE



JETTEN CUSTOM SHOOTING BRAKE

