



DE VALK
YACHT BROKERS



HOLLANDIA TRAWLER 1450



DE VALK
YACHT BROKERS

HOLLANDIA TRAWLER 1450

BROKER'S COMMENTS

This Hollandia Trawler 1450 is a motor yacht with a very spacious lay-out. She has a two cabin lay-out and a spacious bathroom, complete provide with Corian. "Blue Marlin" has had a major refit in 2008. She is complete repainted, has had an electricity upgrade and she is equipped with new teak decks.

Arne Doodeman

SPECIFICATIONS

Dimensions	14.50 x 4.30 x 1.40 (m)	Builder	Scheepswerf Hollandia
Built	1995	Cabins	3
Material	Steel	Berths	7
Engine(s)	2 x Volvo Penta TAMD 41 diesel	Hp/Kw	2 x 150.00 (hp), 110.25 (kw)
Asking price	sold (VAT)	Lying	at sales office

CONTACT

Sales office	De Valk Sneek	Telephone	+31 (0)515 42 80 30
Address	Zwolsmanweg 7 8606 KC Sneek NL	E-mail	sneek@devalk.nl

DISCLAIMER

These particulars are given in good faith as supplied but cannot be guaranteed.



HOLLANDIA TRAWLER 1450

GENERAL

Model	HOLLANDIA TRAWLER 1450
Type	motor yacht
LOA (m)	14,50
Beam (m)	4,30
Draft (m)	1,40
Air draft (m)	3,90
Year built	1995
Builder	Scheepswerf Hollandia
Country	The Netherlands
Displacement (t)	25
Hull material	steel
Hull colour	white
Hull shape	hard chine
Superstructure material	aluminum
Deck finish	teak Complete new teakdecks (2008)
Cockpit deck finish	teak
Window frame	aluminum
Window material	double glazing
Mast can be lowered	yes
Fuel tank (litre)	stainless steel 1500
Freshwater tank (litre)	stainless steel 1000
Blackwater tank (litre)	stainless steel 350
Wheel steering	hydraulic
Inside helm position	yes
Flybridge helm position	hydraulic

ACCOMMODATION

Cabins	3
Berths	7
Interior	teak



HOLLANDIA TRAWLER 1450

Floor	teak
Pilot house	yes
Saloon	yes
Heating	diesel ducted hot air 2 x Eberspacher
Chart table	yes
Galley	yes
Countertop	corian
Sink	yes
Cooker	electric 4-burner
Oven	yes
Fridge	3x
Hot water system	220V + engine
Water pressure system	yes
Dishwasher	yes
Owners cabin	french bed
Wardrobe	yes
Bathroom	Complete bathroom in corian (2008)
Toilet	shared
Toilet system	electric
Wash basin	in the bathroom
Shower	shared
Guest cabin 1	double bed
Wardrobe	yes

MACHINERY

No of engines	2
Make	Volvo Penta
Type	TAMD 41
HP	150,00
kW	110,25
Fuel	diesel



HOLLANDIA TRAWLER 1450

Maximum speed (kn)	10
Cruising speed (kn)	7
Engine hours	2750
Drive	shaft
Engine controls	electrical
Gearbox	hydraulic
Bowthruster	yes
Thrust bearing	yes
Propeller type	fixed Bronze
Propeller shaft material	stainless steel
Electric bilge pump	yes
Electrical installation	2008 Balmer 5KW
Generator	yes
Battery charger/inverter	Victron Quattro 12/120/3000 W
Shorepower	with cable
Insulation transformer	Victron

NAVIGATION

Compass	Autohelm
Log	Autohelm Speed
VHF	1x Raymarine Ray 240E & 1x Shipmate
Autopilot	Autohelm ST6000
Rudder angle indicator	Autohelm
Radar	Furuno
Radar/GPS	Raymarine E140W
Camera	yes
Searchlight	yes

EQUIPMENT

Cockpit table	yes
Cockpit chairs	yes



HOLLANDIA TRAWLER 1450

Bathing platform	yes
Boarding ladder	yes
Transom door	yes
Anchor	yes
Anchor chain	Stainless steel
Windlass	Hydr
Davits	stainless steel
Sea railing	stainless steel
Horn	yes
Fenders	yes
Mooring lines	yes
Radio-cd player	yes
Clock - barometer	yes



HOLLANDIA TRAWLER 1450



HOLLANDIA TRAWLER 1450



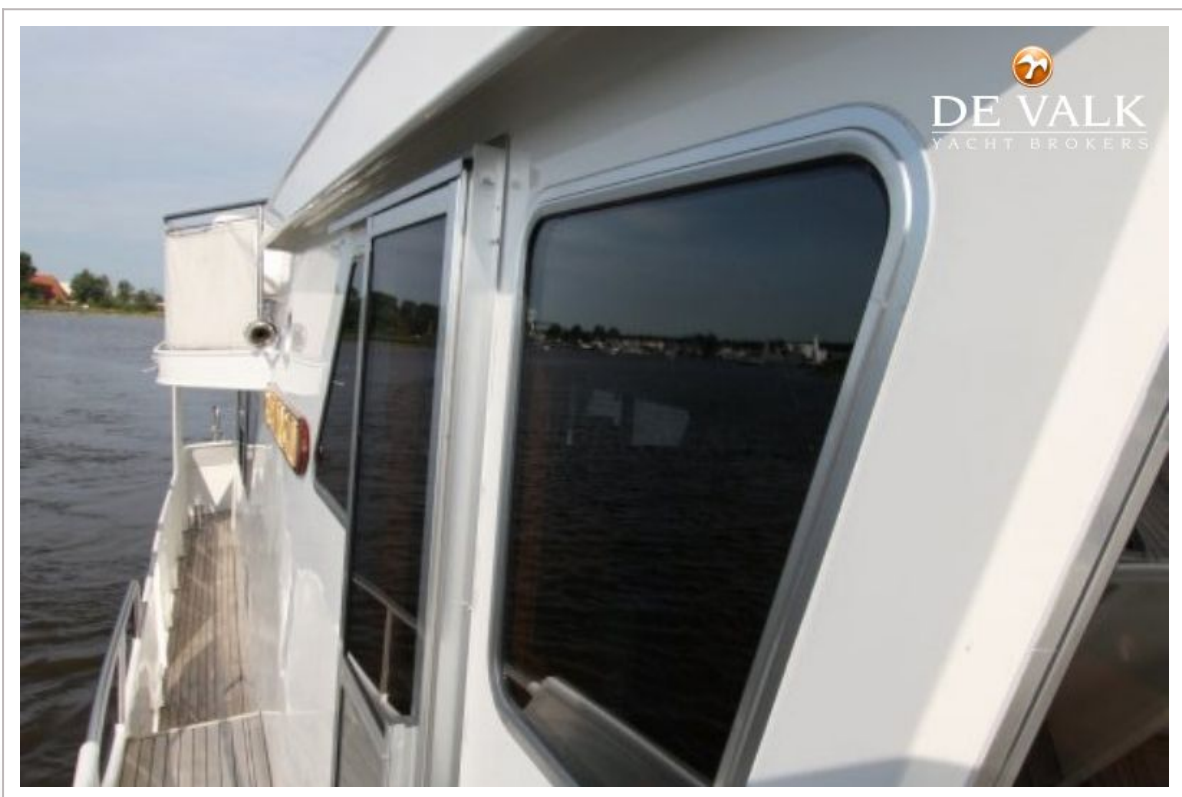
HOLLANDIA TRAWLER 1450



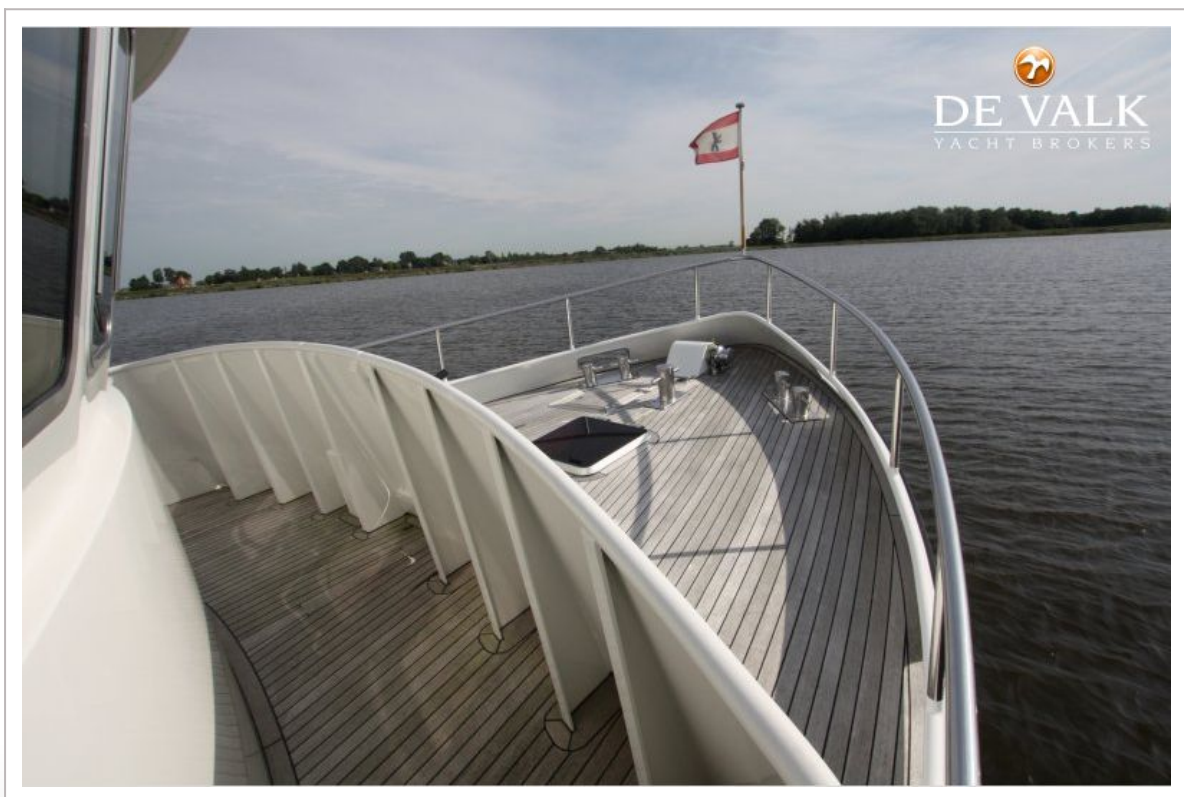
HOLLANDIA TRAWLER 1450



HOLLANDIA TRAWLER 1450



HOLLANDIA TRAWLER 1450



HOLLANDIA TRAWLER 1450



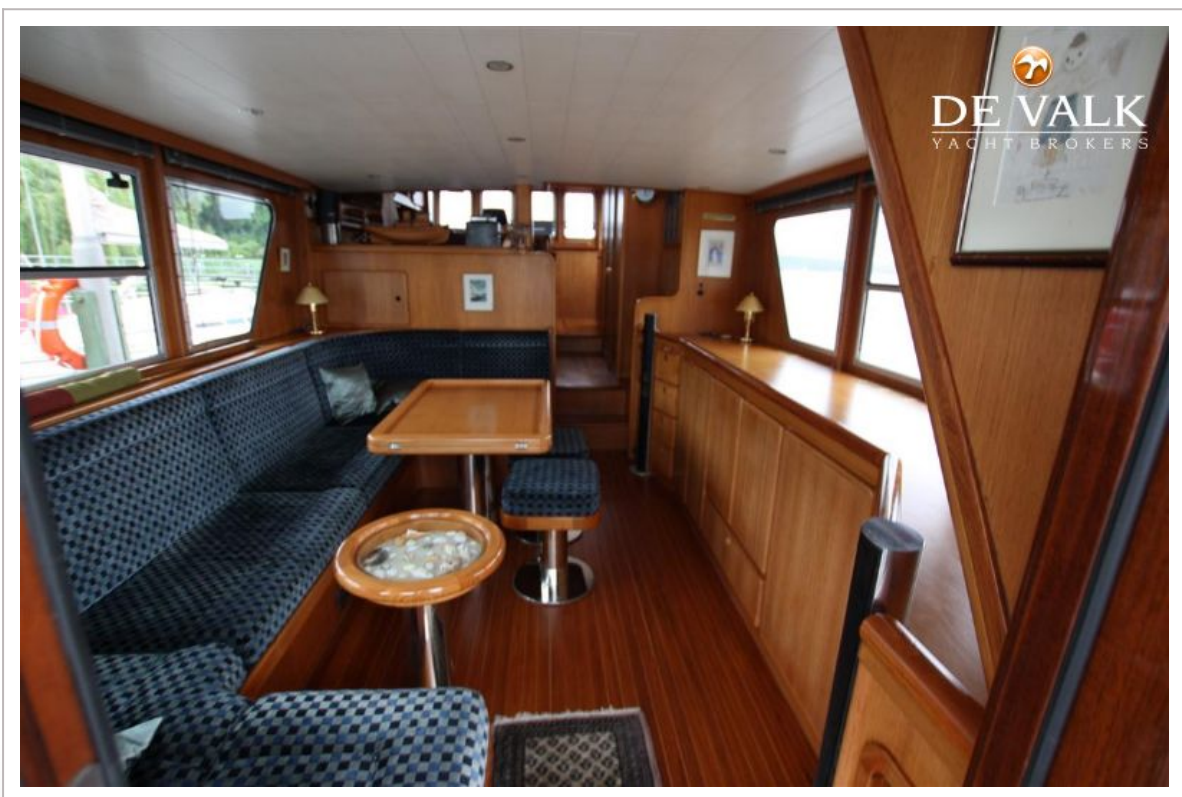
HOLLANDIA TRAWLER 1450



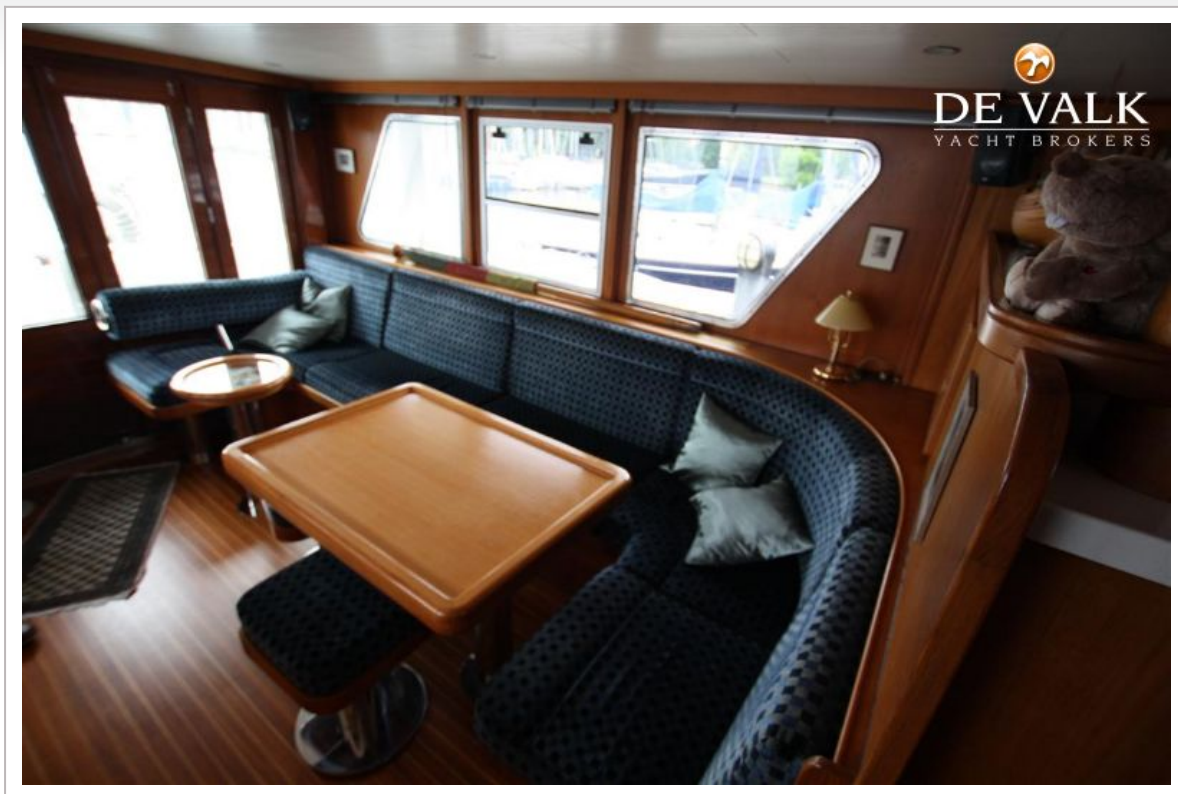
HOLLANDIA TRAWLER 1450



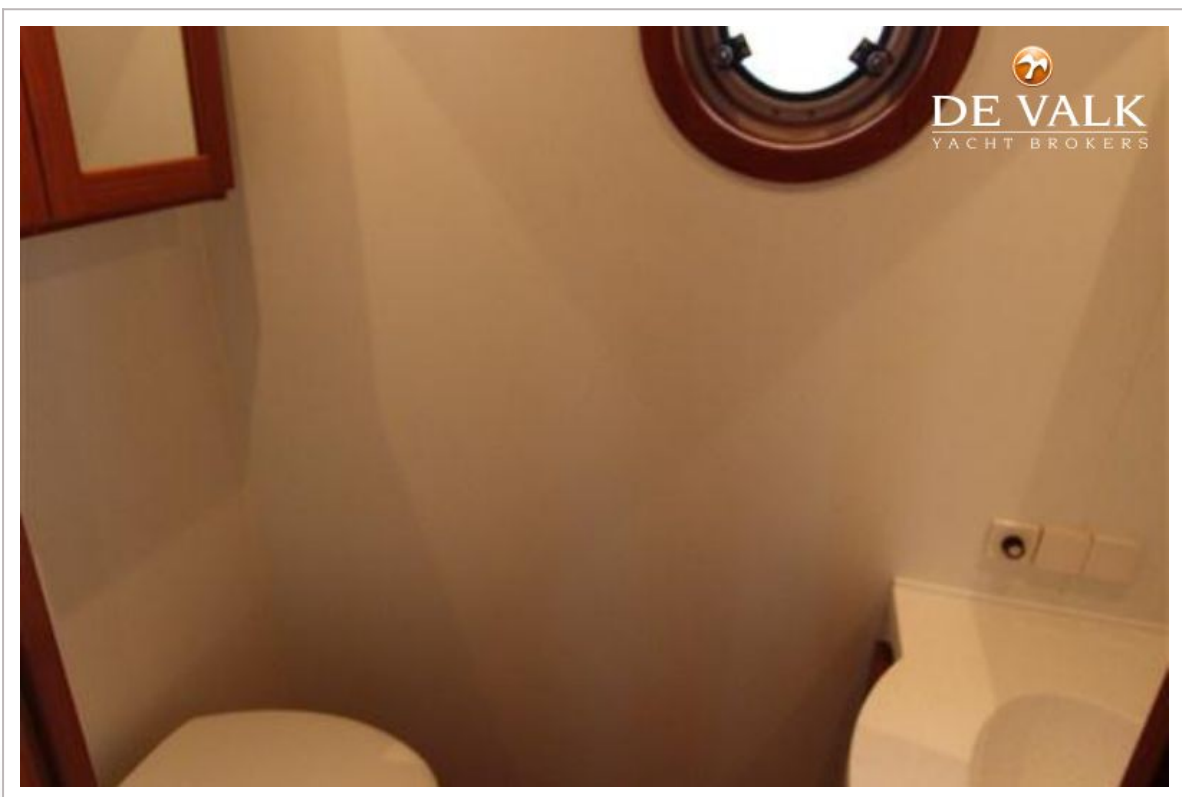
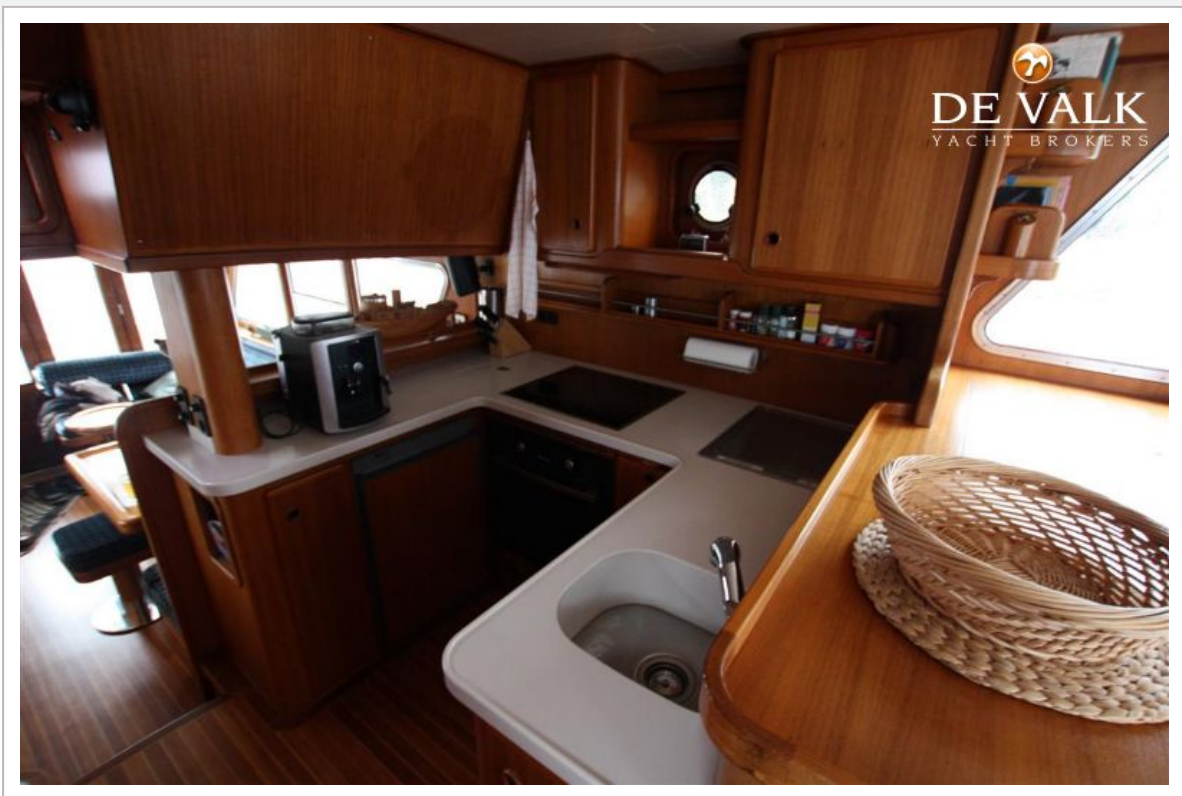
HOLLANDIA TRAWLER 1450



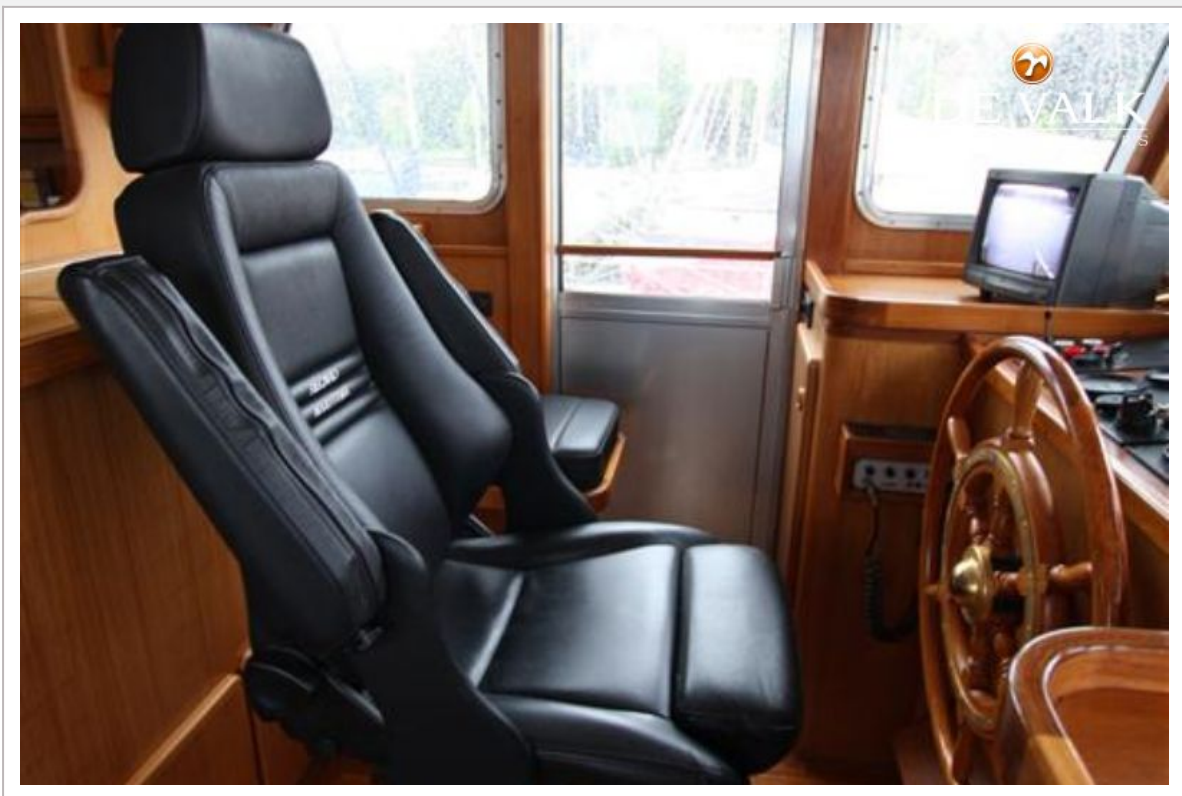
HOLLANDIA TRAWLER 1450



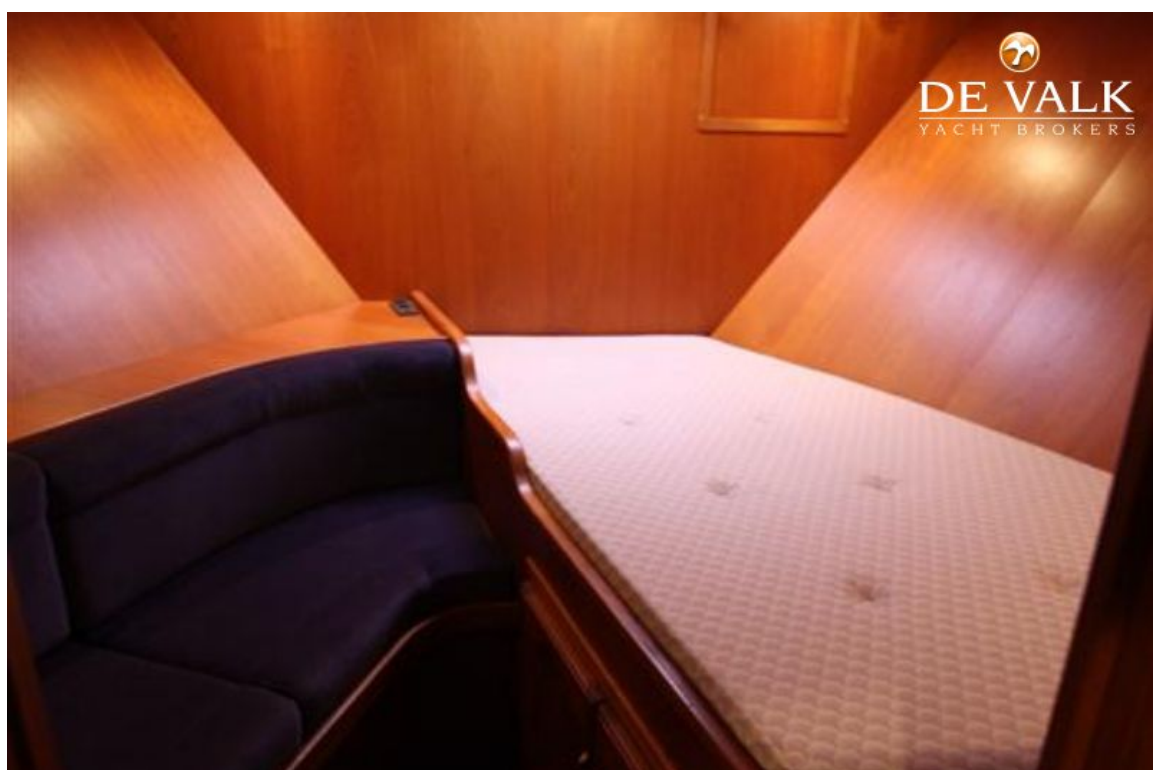
HOLLANDIA TRAWLER 1450



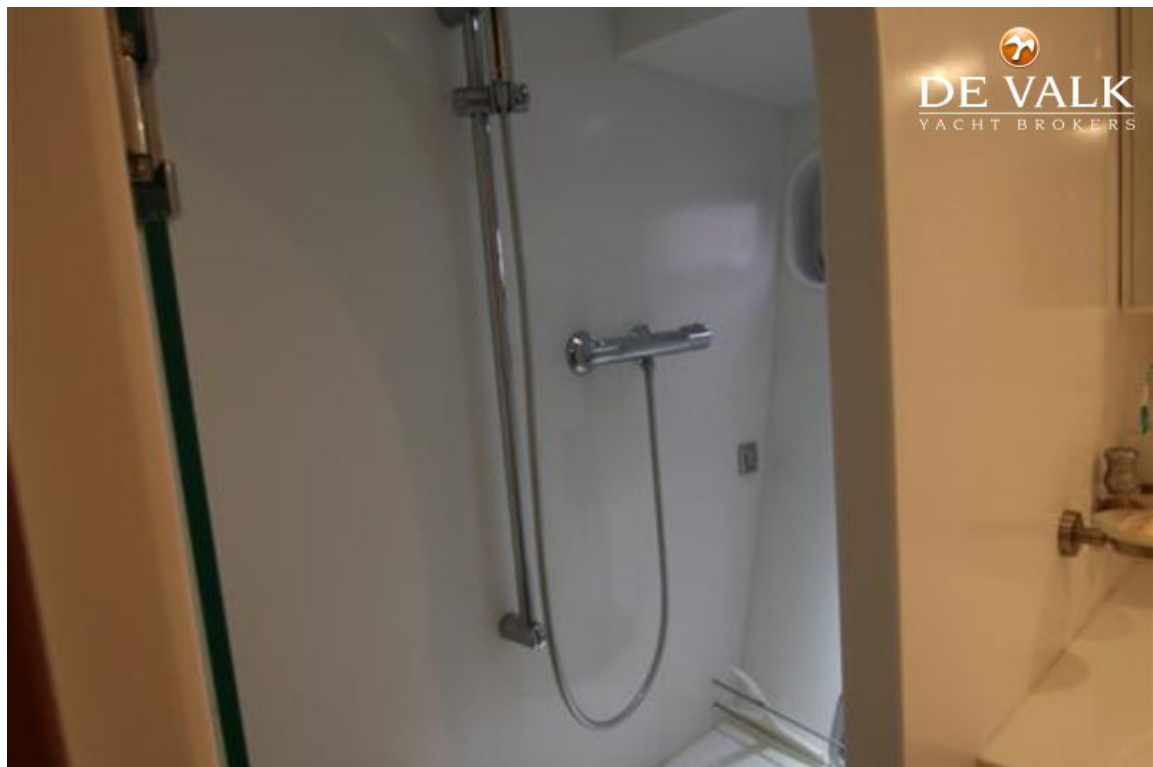
HOLLANDIA TRAWLER 1450



HOLLANDIA TRAWLER 1450



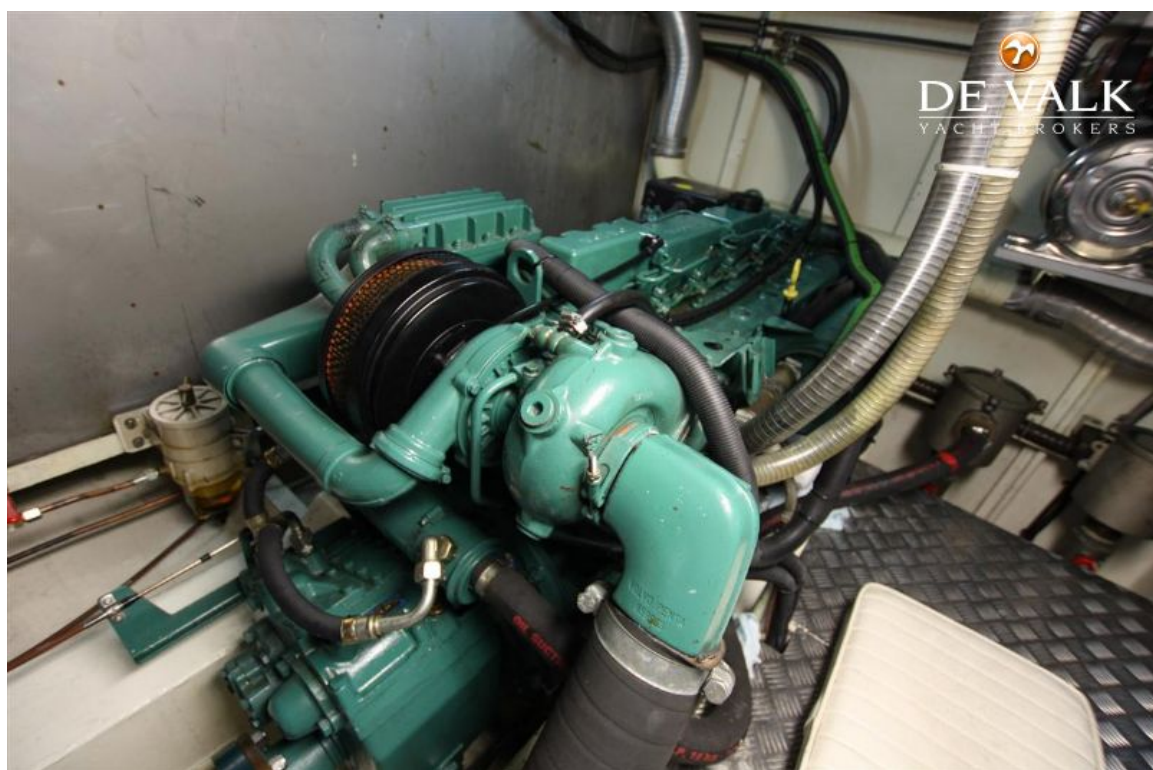
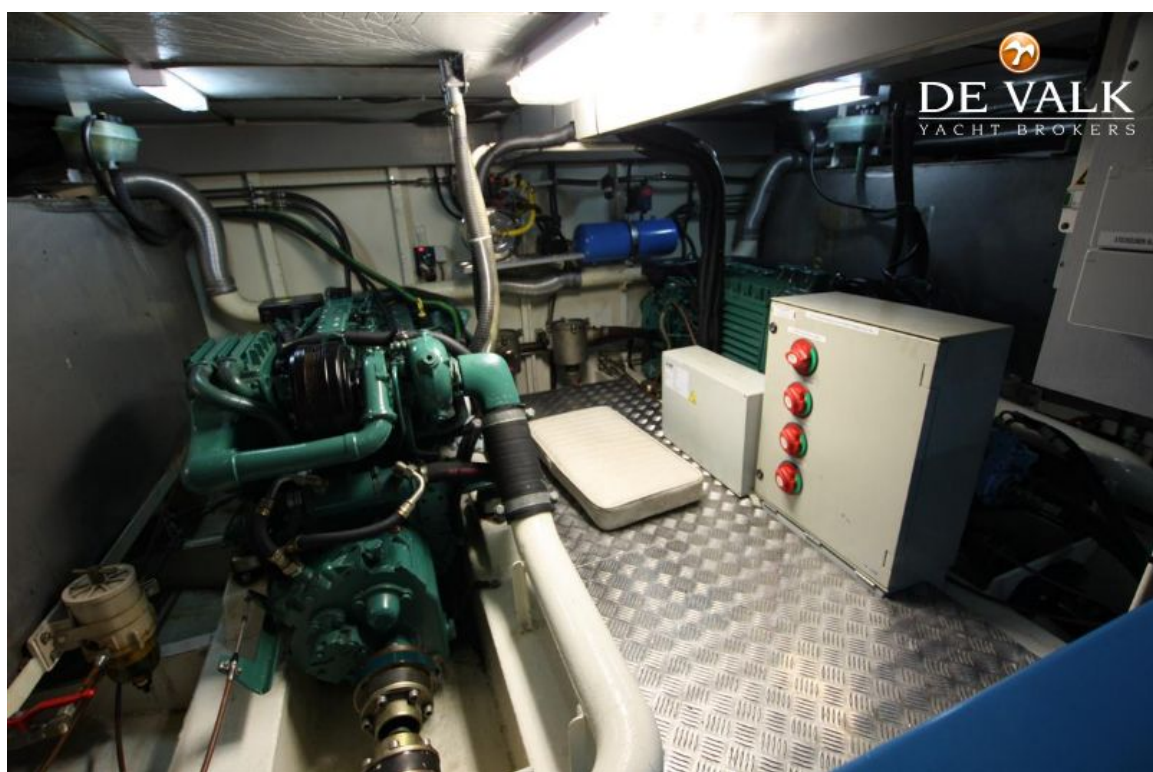
HOLLANDIA TRAWLER 1450



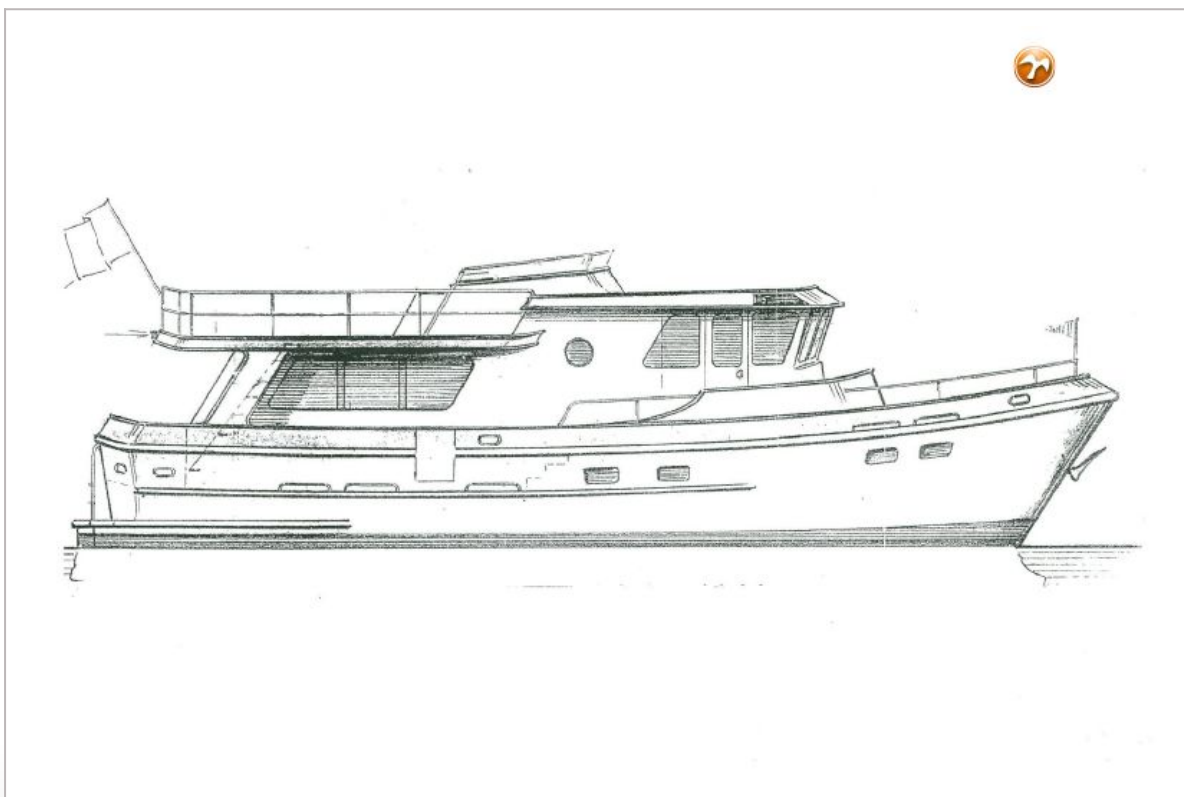
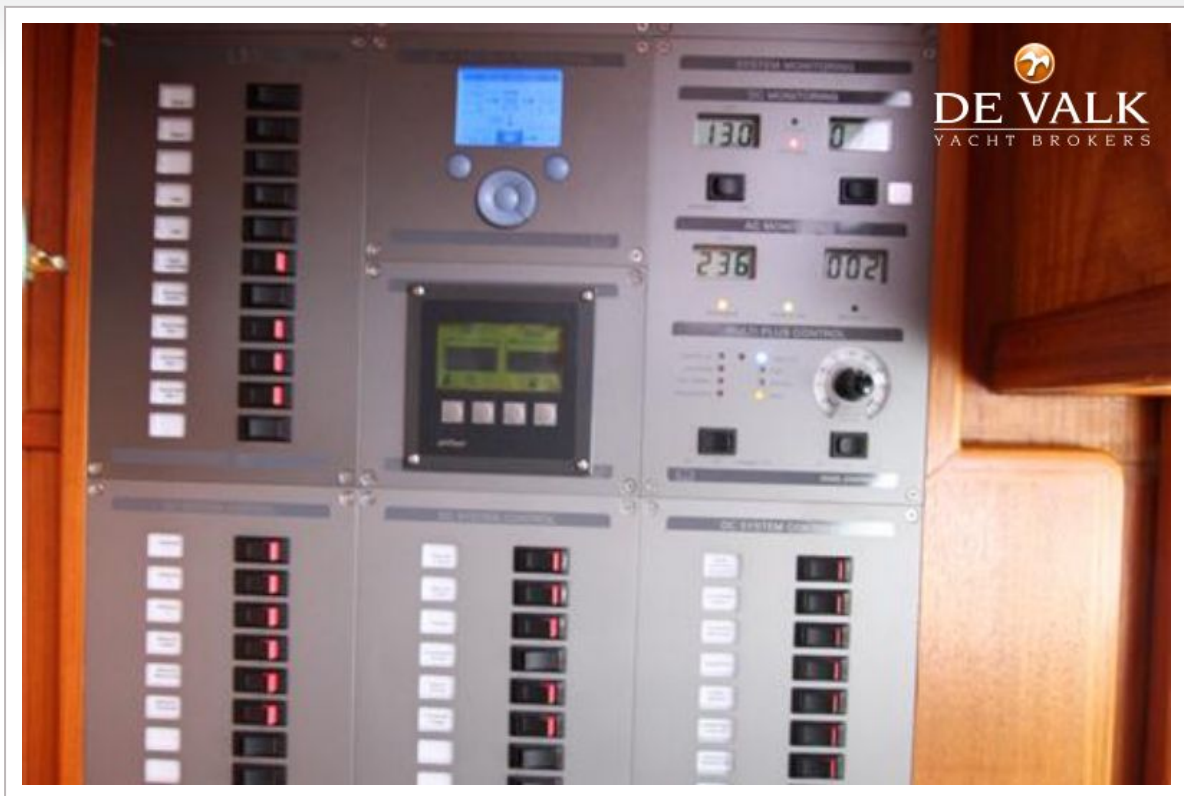
HOLLANDIA TRAWLER 1450



HOLLANDIA TRAWLER 1450



HOLLANDIA TRAWLER 1450



HOLLANDIA TRAWLER 1450

