



## STURIER 520 OC

# STURIER 520 OC

## BROKER'S COMMENTS

Sturier 520 OC built in 2009 by shipyard De Volharding Staveren. Her current owner renewed the upholstery in 2013; new creamy leather cushions in the saloon and dinette, nice Alcantara finishing on the plafonds and new cushions in the cockpit. Furthermore she is equipped with double Vetus Deutz engines and hydraulic bow- and sternthruster with remote control. For comfort she is equipped with double glazed windows, central heating and stabilizers!

*Arne Doodeman*

## SPECIFICATIONS

<b>Dimensions</b>	14.99 x 4.65 x 1.50 (m)	<b>Builder</b>	De Volharding Staveren
<b>Built</b>	2009	<b>Cabins</b>	3
<b>Material</b>	Steel	<b>Berths</b>	6
<b>Engine(s)</b>	2 x Vetus Deutz DTA66 diesel	<b>Hp/Kw</b>	2 x 210.00 (hp), 154.35 (kw)
<b>Asking price</b>	sold (VAT )	<b>Lying</b>	elsewhere / Not at sales office

## CONTACT

<b>Sales office</b>	De Valk Sneek	<b>Telephone</b>	+31 (0)515 42 80 30
<b>Address</b>	Zwolsmanweg 7 8606 KC Sneek NL	<b>E-mail</b>	sneek@devalk.nl

## DISCLAIMER

These particulars are given in good faith as supplied but cannot be guaranteed.



## GENERAL

Model	STURIER 520 OC
Type	motor yacht
LOA (m)	14,99
Beam (m)	4,65
Draft (m)	1,50
Air draft (m)	3,45
Year built	2009
Builder	De Volharding Staveren
Country	The Netherlands
Designer	Sturier Yachts
Displacement (t)	32,5
CE norm	A
Hull material	steel
Hull colour	blue
Hull shape	multi hard chine
Keel type	boxkeel
Superstructure material	steel
Deck finish	teak
Cockpit deck finish	teak
Antifouling (year)	2013
Window frame	aluminium
Window material	double glazing Gebo Termic-line
Mast can be lowered	electric
Fuel tank (litre)	3500
Level indicator (fuel tank)	yes
Fuel daytank (litre)	2x
Freshwater tank (litre)	1500
Level indicator (freshwater)	yes
Blackwater tank (litre)	500
Wheel steering	hydraulic



## Extra info

Length over all 15,60 mtr.

## ACCOMMODATION

Cabins	3
Berths	6
Interior	teak
Floor	teak
Open cockpit	yes
Pilot house	yes
Heating	central heating Kabola HR-400 with fan coils
Chart table	yes
Dinette	yes
Galley	yes
Countertop	corian
Sink	stainless steel
Cooker	electric 4-burner Bosch
Extractor	yes
Microwave	Bosch combi microwave
Fridge	with freezer compartment Isotherm 1x 130 liter and 1x 50 liter
Hot water system	on central heating 60 liter
Water pressure system	yes
Owners cabin	french bed
Wardrobe	yes
Bathroom	en suite
Toilet	yes
Toilet system	electric
Wash basin	yes
Shower	yes
Guest cabin 1	twin single
Wardrobe	yes
Bathroom	shared



<b>Toilet</b>	
<b>Toilet system</b>	electric
<b>Wash basin</b>	in the bathroom
<b>Shower</b>	yes
<b>Guest cabin 2</b>	twin single
<b>Wardrobe</b>	yes
<b>Washing machine</b>	Bosch Maxx5 combi wash/dry
<b>Dryer</b>	yes

## MACHINERY

<b>No of engines</b>	2
<b>Make</b>	Vetus Deutz
<b>Type</b>	DTA66
<b>HP</b>	210,00
<b>kW</b>	154,35
<b>Fuel</b>	diesel
<b>Maximum speed (kn)</b>	10
<b>Cruising speed (kn)</b>	9
<b>Engine hours</b>	575
<b>Engine cooling system</b>	seawater
<b>Engine controls</b>	electrical EMC
<b>Gearbox</b>	hydraulic ZF63
<b>Bowthruster</b>	hydraulic Proportional & with remote control
<b>Sternthruster</b>	hydraulic Proportional & with remote control
<b>Thrust bearing</b>	Aquadrive
<b>Propeller type</b>	fixed
<b>Propeller shaft material</b>	stainless steel
<b>Shaft lubrication</b>	water
<b>Electric bilge pump</b>	yes
<b>Generator</b>	Mastervolt whisper generator 8 ultra
<b>Batteries</b>	yes



<b>Battery monitor</b>	Mastervolt
<b>Battery charger/inverter</b>	Victron multi plus 24/3000/70
<b>Shorepower</b>	with cable
<b>Insulation transformer</b>	Mastervolt IVET-D 16/35
<b>Stabilizers</b>	fin Najad
<b>Extra info</b>	Bow- and stern thruster and the both engines are remote controlled

## NAVIGATION

<b>Depth sounder</b>	Raymarine ST60+ tridata
<b>Log</b>	Raymarine ST60+ tridata
<b>Windset</b>	Raymarine ST60+
<b>VHF</b>	Raymarine RAY240E
<b>Autopilot</b>	Raymarine ST6002
<b>Rudder angle indicator</b>	in the autopilot screen
<b>Radar/GPS/plotter</b>	1x Raymarine C120 and 1 x Raymarine C80
<b>Camera</b>	yes
<b>Searchlight</b>	yes
<b>Loudhailer</b>	yes

## EQUIPMENT

<b>Bimini</b>	new (2013)
<b>Cockpit cushions</b>	new (2013)
<b>Cockpit table</b>	yes
<b>Bathing platform</b>	yes
<b>Boarding ladder</b>	stainless steel
<b>Transom door</b>	yes
<b>Anchor</b>	yes
<b>Anchor chain</b>	yes
<b>Windlass</b>	electrical Maxwell HWC2200
<b>Deck wash</b>	yes



Davits	stainless steel New (2013)
Davits controls	electrical
Sea railing	stainless steel
Grab rail (superstructure)	stainless steel
Wiper	3x heavy duty wipers
Horn	yes
Fenders	yes
Mooring lines	yes
TV	4x LCD
TV receiver	Denson
TracVision ball	Tracvision for 4 television use
Radio-cd player	JVC
Speakers in salon	yes
Clock - barometer	Clock/Baro/hygrometer
Fire extinguisher	yes
Extinguisher in engine room	yes





# STURIER 520 OC







# STURIER 520 OC





# STURIER 520 OC



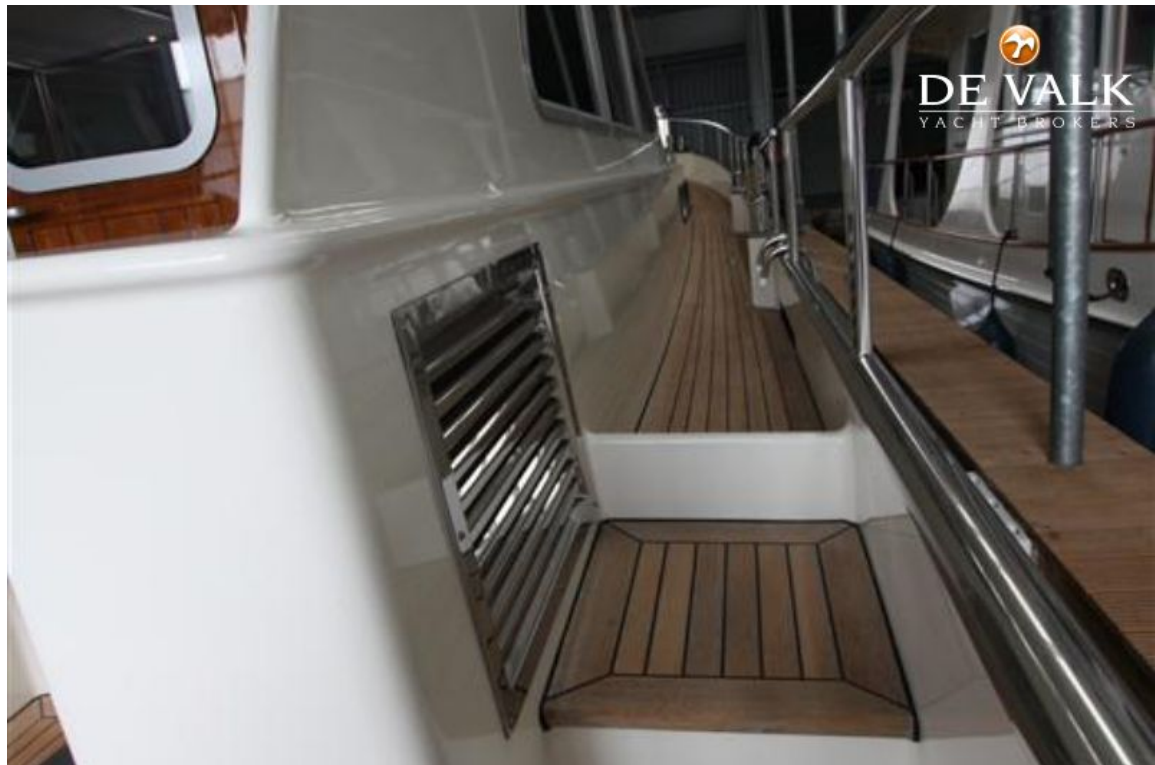
# STURIER 520 OC





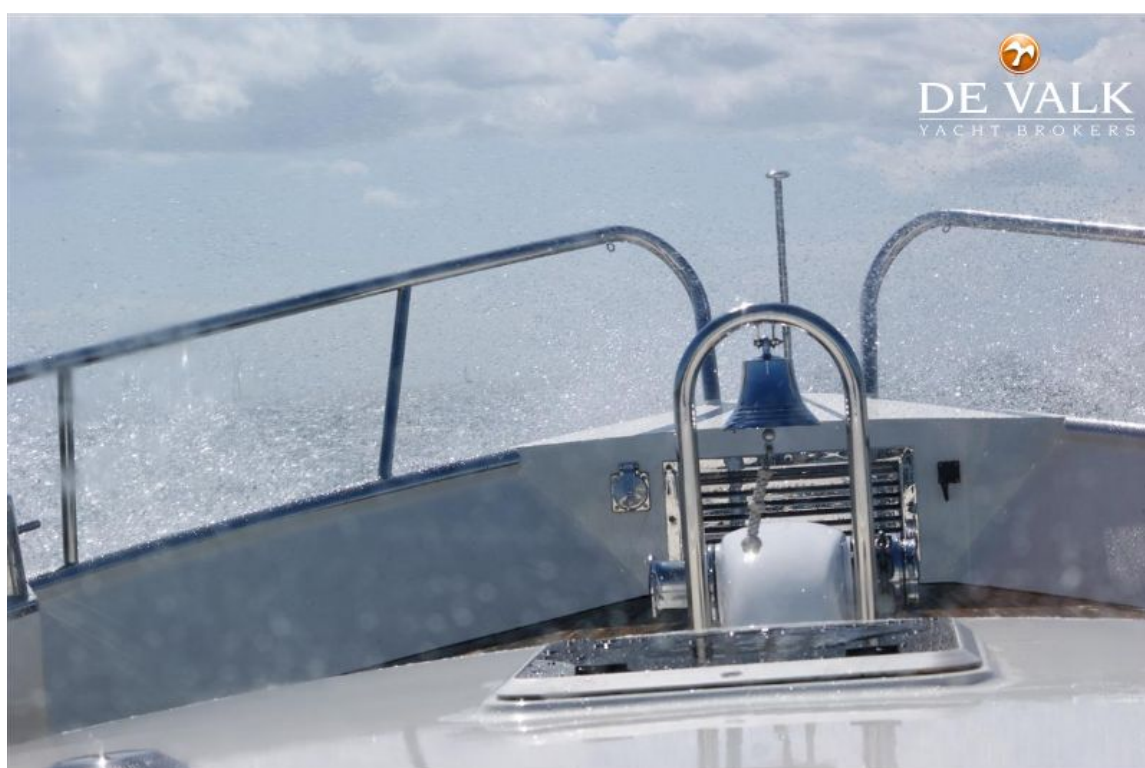


# STURIER 520 OC





# STURIER 520 OC





# STURIER 520 OC



# STURIER 520 OC





# STURIER 520 OC

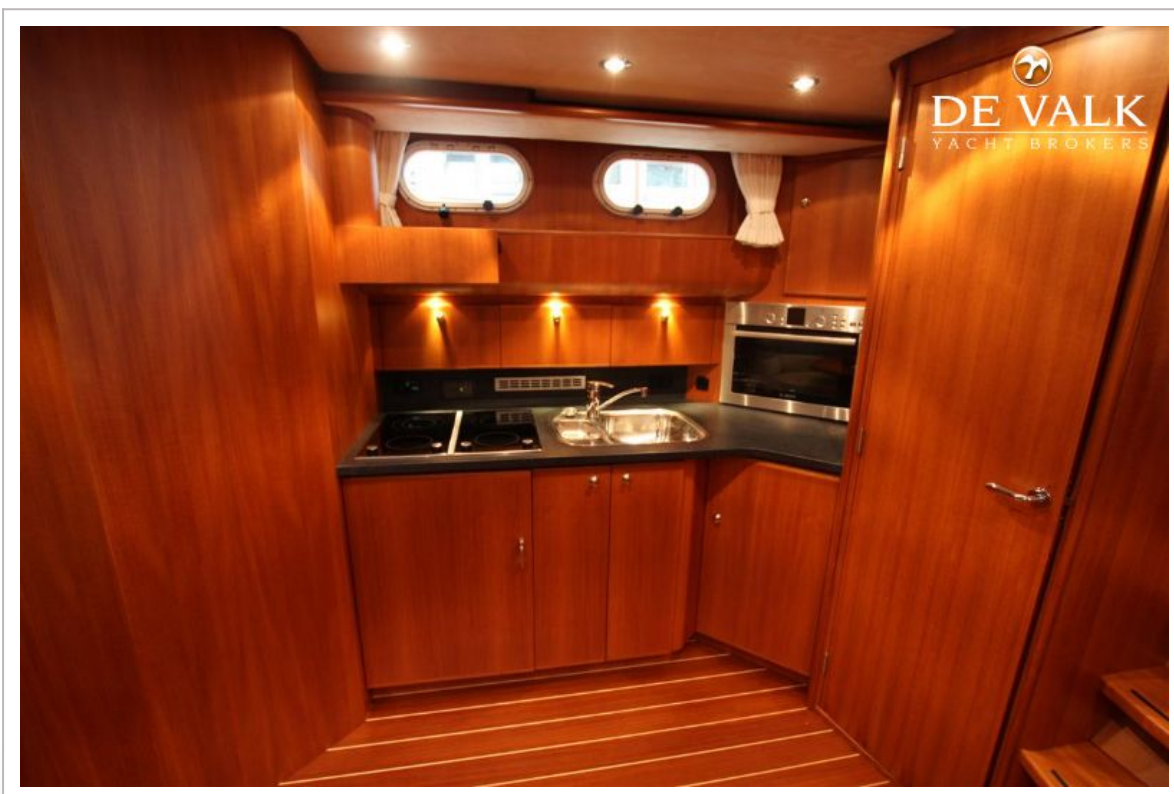


# STURIER 520 OC





# STURIER 520 OC



# STURIER 520 OC





# STURIER 520 OC

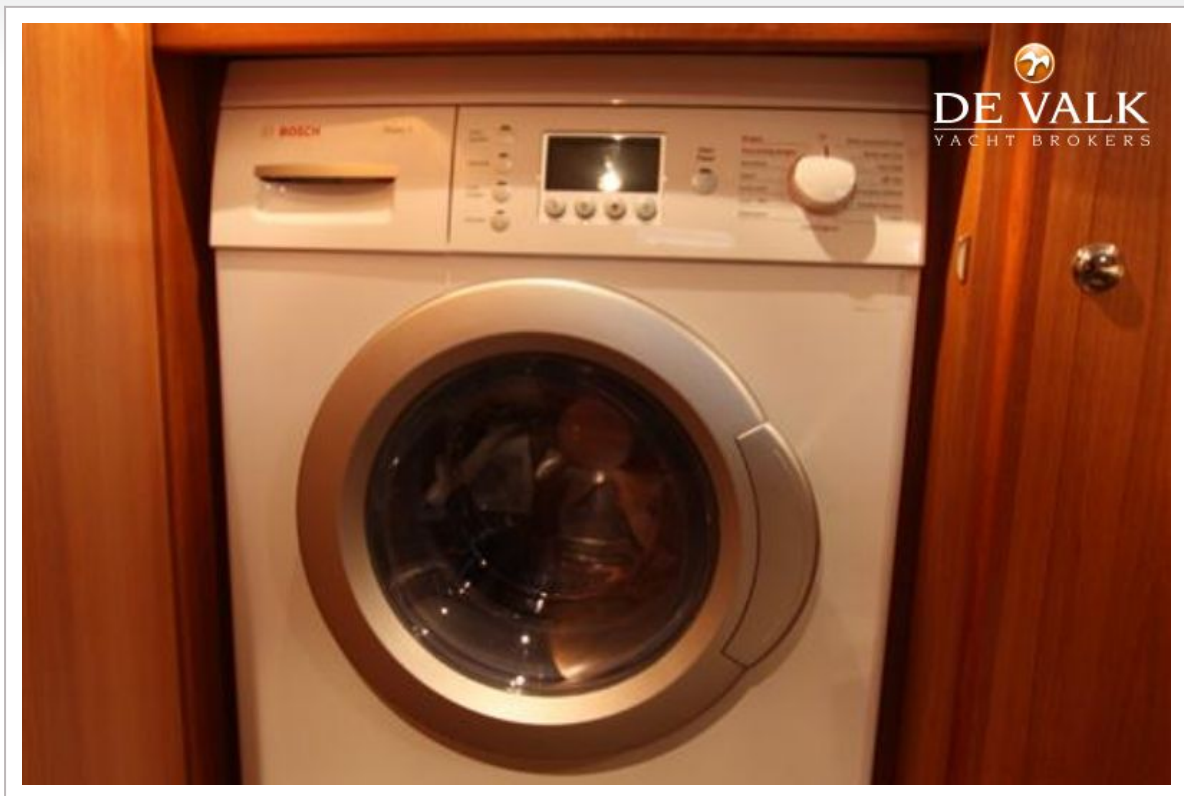




# STURIER 520 OC



## STURIER 520 OC

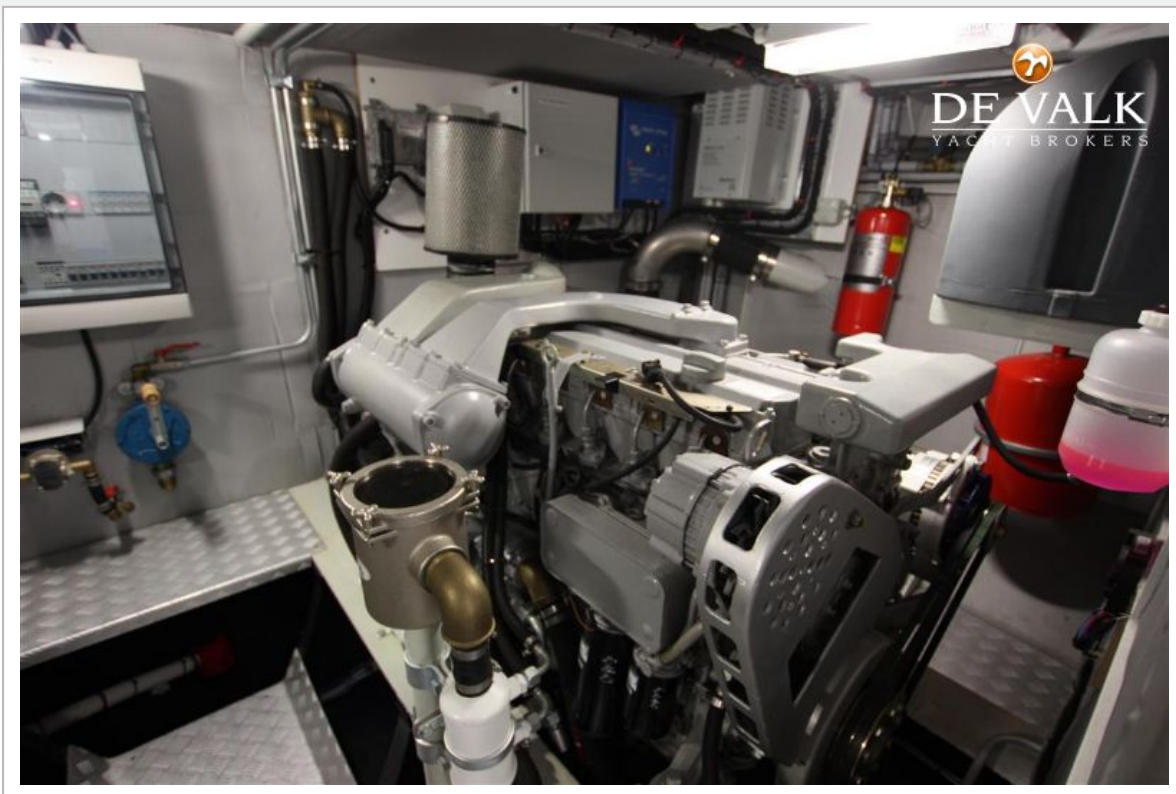




# STURIER 520 OC



# STURIER 520 OC





# STURIER 520 OC

