



DE VALK
YACHT BROKERS



GRAND BANKS 46 CLASSIC



DE VALK
YACHT BROKERS

GRAND BANKS 46 CLASSIC

BROKER'S COMMENTS

This Grand Banks 46 Classic is in nice condition. Very complete equipped with i.a. two Volvo Penta diesel engines and electric bow thruster. This model is in a two cabins and two bathroom lay-out equipped. You are very welcome to view this beautiful motor yacht in our covered sales harbor in Sneek.

Arne Doodeman

SPECIFICATIONS

Dimensions	15.40 x 4.60 x 1.28 (m)	Builder	American Marine LTD
Built	1987	Cabins	2
Material	GRP	Berths	4
Engine(s)	2 x Volvo Penta TAM71A diesel	Hp/Kw	2 x 357.00 (hp), 262.40 (kw)
Asking price	sold (VAT)	Lying	at sales office

CONTACT

Sales office	De Valk Sneek	Telephone	+31 (0)515 42 80 30
Address	Zwolsmanweg 7 8606 KC Sneek NL	E-mail	sneek@devalk.nl

DISCLAIMER

These particulars are given in good faith as supplied but cannot be guaranteed.



GRAND BANKS 46 CLASSIC

GENERAL

Model	GRAND BANKS 46 CLASSIC
Type	motor yacht
LOA (m)	15,40
LWL (m)	13,65
Beam (m)	4,60
Draft (m)	1,28
Air draft (m)	3,86
Year built	1987
Builder	American Marine LTD
Country	Malaysia
Displacement (t)	18
Hull material	GRP
Hull colour	white
Hull shape	deep-V
Superstructure material	GRP
Deck finish	teak
Window frame	wood
Window material	glass
Flybridge	yes
Flybridge suncover	yes
Mast can be lowered	manual
Fuel tank (litre)	2250
Freshwater tank (litre)	1052
Blackwater tank (litre)	120
Wheel steering	mechanical
Inside helm position	yes
Flybridge helm position	yes

ACCOMMODATION

Cabins	2
--------	---



GRAND BANKS 46 CLASSIC

Berths	4
Floor	parquett
Heating	diesel ducted hot air Eberspacher
Chart table	yes
Galley	yes
Countertop	yes
Sink	yes
Cooker	electric 4 burner
Oven	yes
Extractor	yes
Microwave	yes
Fridge	2x
Hot water system	220V + engine
Water pressure system	yes
Owners cabin	french bed
Wardrobe	yes
Bathroom	en suite
Toilet	en suite
Wash basin	in the bathroom
Shower	en suite
Guest cabin 1	v-bed
Wardrobe	yes
Bathroom	shared
Toilet	shared
Wash basin	in the bathroom

MACHINERY

No of engines	2
Make	Volvo Penta
Type	TAMD71A
HP	357,00



GRAND BANKS 46 CLASSIC

kW	262,40
Fuel	diesel
Engine hours	2850
Engine cooling system	freshwater heat exchanger
Engine controls	manual
Gearbox	hydraulic
Bowthruster	hydraulic
Thrust bearing	yes
Propeller type	fixed
Propeller shaft material	stainless steel
Shaft lubrication	water
Electric bilge pump	yes
Generator	Fisher Panda
Batteries	yes
Battery charger/inverter	Mastervolt Mass combi 12/2000/100
Shorepower	with cable

NAVIGATION

Compass	yes
Depth sounder	Autohelm
Log	Raymarine
Windset	Raymarine
VHF	Furuno
Autopilot	Raymarine
Radar	Raymarine
Plotter	Raymarine
Navtex	Furuno
Loudhailer	Raytheon

EQUIPMENT

Bimini	yes
---------------	-----



GRAND BANKS 46 CLASSIC

Cockpit cushions	yes
Bathing platform	yes
Anchor	yes
Anchor chain	yes
Windlass	electrical
Sea railing	yes
Wiper	yes
Horn	yes
Fenders	yes
Mooring lines	yes
DVD player	Sony Surround/dvd
Clock - barometer	yes
Fire extinguisher	yes



GRAND BANKS 46 CLASSIC



GRAND BANKS 46 CLASSIC



GRAND BANKS 46 CLASSIC



GRAND BANKS 46 CLASSIC



GRAND BANKS 46 CLASSIC



GRAND BANKS 46 CLASSIC



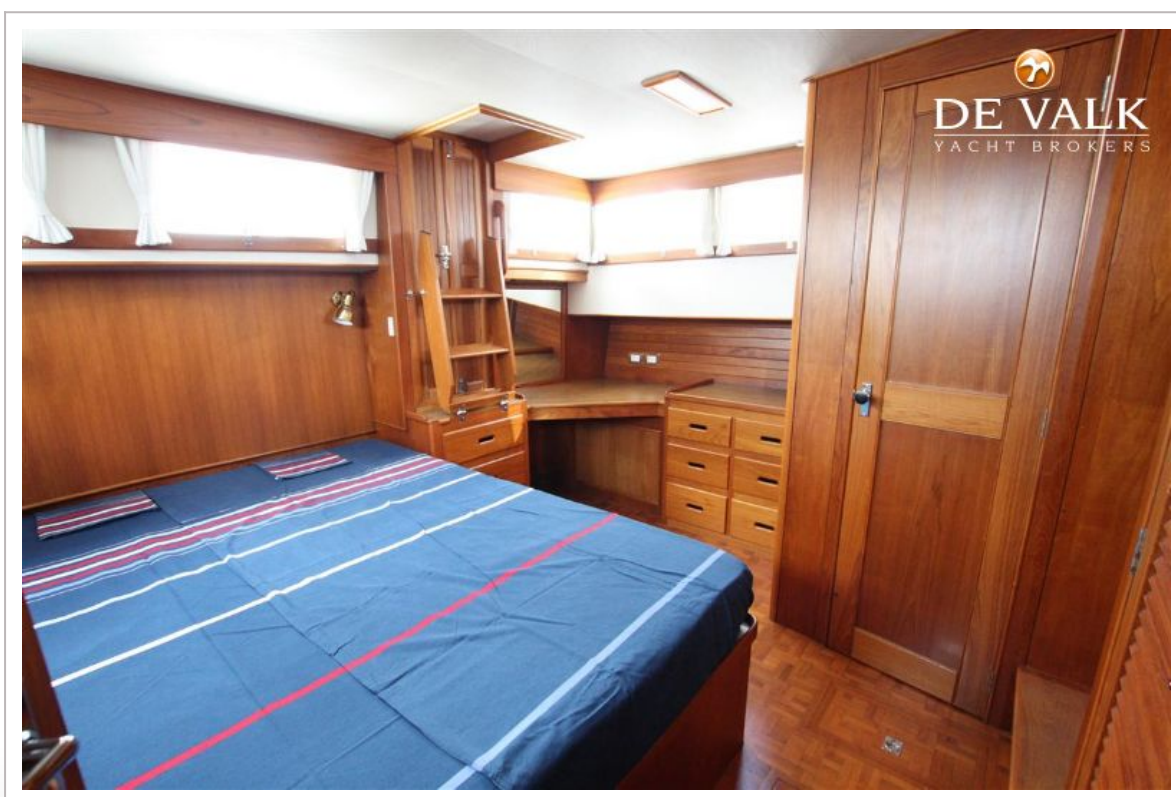
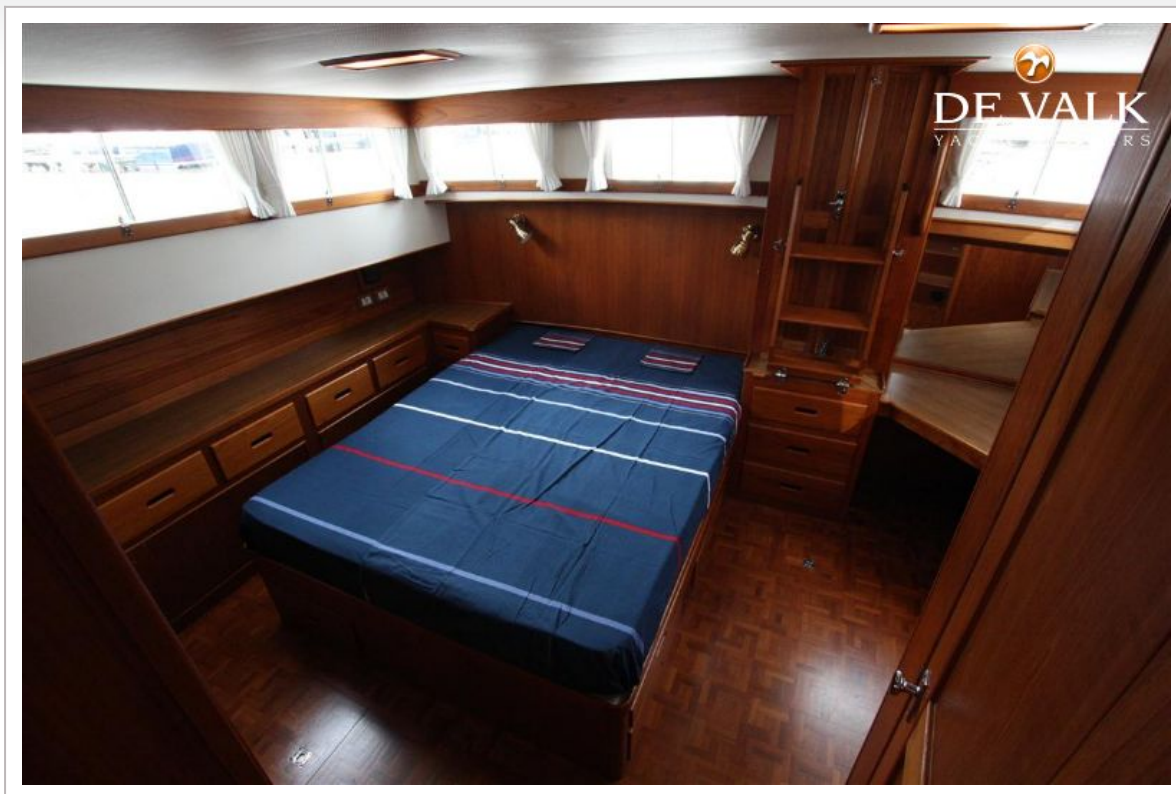
GRAND BANKS 46 CLASSIC



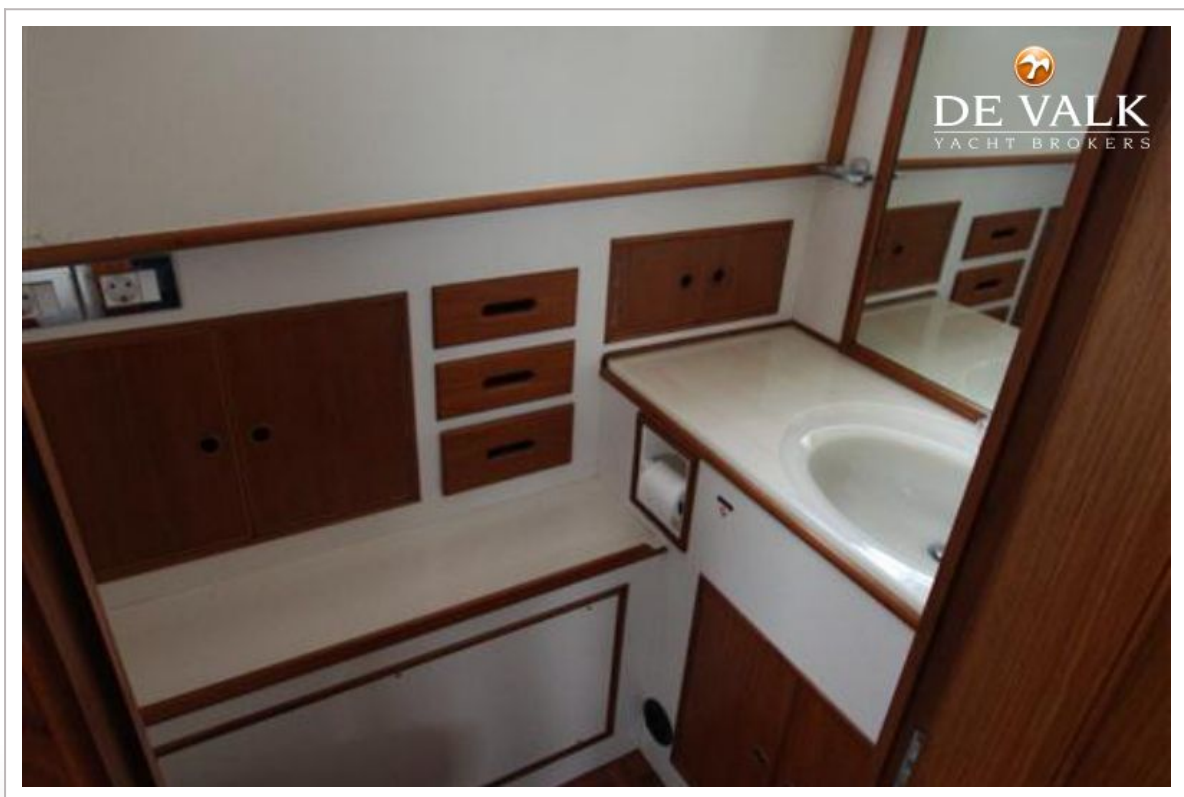
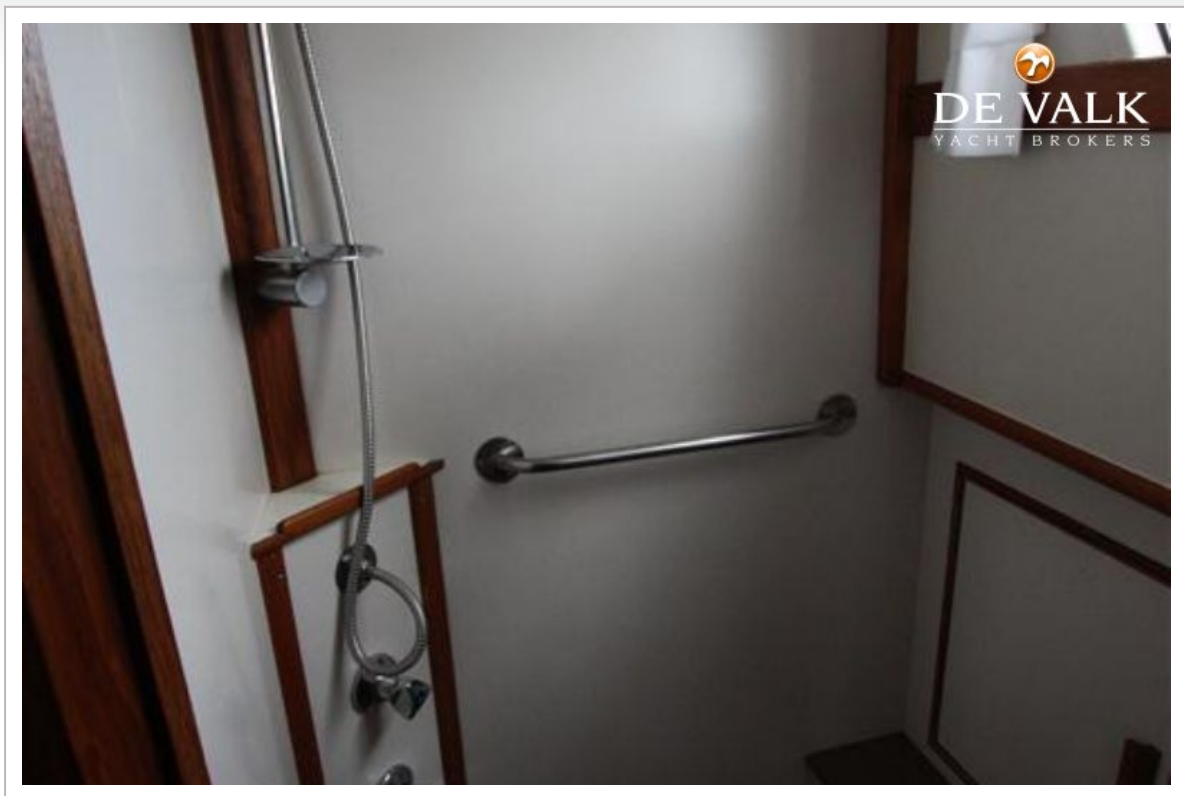
GRAND BANKS 46 CLASSIC



GRAND BANKS 46 CLASSIC



GRAND BANKS 46 CLASSIC



GRAND BANKS 46 CLASSIC



GRAND BANKS 46 CLASSIC



GRAND BANKS 46 CLASSIC

