



## ALTENA BLUE WATER TRAWLER 48

# ALTENA BLUE WATER TRAWLER 48

## BROKER'S COMMENTS

Altena Blue Water Trawler 48 has been refitted in phases from 2014 to 2019. You could almost say a "as good as new" ship. The boat is equipped with Kabola central heating (2019) well insulated, hydraulic bow and stern thruster, hydraulic windlass, stabilizers (Fin) and generator (8kVA), modern navigation equipment inside & flybridge (2019) a very complete ship that offers the possibility for possibly permanent residence. Come and admire the Altena BWT48 in our covered sales marina in Sneek.

*Henk de Vries*

## SPECIFICATIONS

<b>Dimensions</b>	14.99 x 4.85 x 1.45 (m)	<b>Builder</b>	Altena Yachting
<b>Built</b>	1999	<b>Cabins</b>	2
<b>Material</b>	Steel	<b>Berths</b>	6
<b>Engine(s)</b>	1 x John Deere 6068TFM01 diesel	<b>Hp/Kw</b>	175.00 (hp), 128.63 (kw)
<b>Asking price</b>	sold (VAT )	<b>Lying</b>	at sales office

## CONTACT

<b>Sales office</b>	De Valk Sneek	<b>Telephone</b>	+31 (0)515 42 80 30
<b>Address</b>	Zwolsmanweg 7 8606 KC Sneek NL	<b>E-mail</b>	sneek@devalk.nl

## DISCLAIMER

These particulars are given in good faith as supplied but cannot be guaranteed.



# ALTENA BLUE WATER TRAWLER 48

## GENERAL

Model	ALTENA BLUE WATER TRAWLER 48
Type	motor yacht
LOA (m)	14,99
LWL (m)	12,65
Beam (m)	4,85
Draft (m)	1,45
Air draft (m)	3,45
Headroom (m)	2,00
Year built	1999
Launched	1999
Builder	Altena Yachting
Country	The Netherlands
Designer	Brinksma Marine
Displacement (t)	36
Ballast (tonnes)	lead
CE norm	B
Hull material	steel
Hull colour	blue
Hull thickness (mm)	5
Hull shape	multi hard chine
Keel type	box keel 15mm
Superstructure material	steel
Superstructure (mm)	4
Deck plate thickness (mm)	4
Rubbing strake	stainless steel
Deck material	steel
Deck finish	teak
Superstructure deck finish	paint
Cockpit deck finish	teak
Antifouling (year)	2020



# ALTENA BLUE WATER TRAWLER 48

Dorades	yes
Window frame	aluminium Rhigo
Window material	glass
Deckhatch	yes
Portholes	yes
Insulation	rockwool BWT 48 is equipped with a dehumidifier DDL8
Flybridge	yes
Mast can be lowered	hydraulic
Fuel tank (litre)	steel 1.230
Fuel tank 2 (litre)	steel 1.230
Level indicator (fuel tank)	yes
Fuel daytank (litre)	steel 380
Freshwater tank (litre)	stainless steel 880
Level indicator (freshwater)	Hart Systems Tank Tender
Blackwater tank (litre)	stainless steel 680
Level indicator (blackwater)	Hart Systems Tank Tender
Blackwater tank extraction	deck extraction + pump
Wheel steering	hydraulic
Inside helm position	yes
Outside helm position	hydraulic
Flybridge helm position	hydraulic
Emergency tiller	yes
More info on paintwork	Hull and superstructure new painted in 2014
Extra info	in 2014, the Altena BWT48 underwent a professional (total) refit

## ACCOMMODATION

Cabins	2
Berths	6
Interior	teak
Floor	teak and holly Partly carpet
Aft deck	yes



# ALTENA BLUE WATER TRAWLER 48

Deck saloon	yes
Saloon	yes
Headroom saloon (m)	1,95
Heating	central heating Kabola EcoLine KB45 (2019)
Aft Cabin	yes
Dinette	yes
Dinette to convert into berth	yes
Opening door to cockpit	L & R
Galley	yes
Countertop	Duropal
Sink	stainless steel
Cooker	ceramic Pelgrim 4 burner
Extractor	Siemens
Microwave/oven combi	Whirlpool "Talent"
Fridge	Isotherm CR130D
Freezer	Separate
Hot water system	on central heating
Water pressure system	electrical
Owners cabin	French bed
Bed length (m)	2,10
Wardrobe	hanging/drawers/shelves
Bathroom	en suite
Toilet	en suite
Toilet system	electric
Wash basin	in the bathroom
Shower	en suite
Guest cabin 1	bunk bed
Bed length (m)	2,10
Wardrobe	hanging/drawers/shelves
Bathroom	en suite
Toilet	en suite
Toilet system	manual



# ALTENA BLUE WATER TRAWLER 48

Wash basin	in the bathroom
Washing machine/dryer combi	Brandt WDT1373K
Central vacuum cleaner	yes
Flybridge	yes

## MACHINERY

No of engines	1
Make	John Deere
Type	6068TFM01
HP	175
kW	128,63
Fuel	diesel
Year installed	1999
Maximum speed (kn)	9,5 kn
Cruising speed (kn)	8
Consumption (l/hr)	6
Engine hours	1780
Engine cooling system	freshwater heat exchanger
Drive	shaft
Engine controls	electrical
Gearbox	hydraulic Twin Disc MG-5050S & Trolling valve
Bowthruster	hydraulic
Sternthruster	hydraulic
Gearbox	hydraulic
Exhaust	watercooled
Propeller type	fixed
Propeller blades	4
Propeller shaft material	stainless steel 50mm
Shaft lubrication	water
Manual bilge pump	yes
Electric bilge pump	yes



# ALTENA BLUE WATER TRAWLER 48

Electrical installation	12V /24V /220V
Generator	silent separator Vetus-Mitsubishi 8kva
Running hours generator	709
Batteries	9
Start battery	2x Optima Redtop
Service battery	6x CellPower CPC250-12V 250Ah (2019)
Generator battery	1x with charger
Battery monitor	Mastervolt Power System Control Panel.
Battery charger	Mastervolt Mass 24/100-C
Inverter	Mastervolt Mass Sine 24/2500
Shorepower	with cable
Insulation transformer	Mastervolt 3,5 kVA incl. softstart 110-220-240V
Stabilizers	fin KoopNautic
Extra info	Hydraulics by:Hydrosta Hydraulics / PTO Dension Hydraulics PV29

## NAVIGATION

Compass on flybridge	2x Raymarine i70S
Electric compass	2x Raymarine i70S
Depth sounder/log	2x Raymarine i70S
Windset	yes
Repeater	yes
VHF	1x Raymarine RayMic 260 1x Raymarine Ray60
Autopilot	2x Raymarine P70RS + Raymarine Evolution EV1
Rudder angle indicator	in the autopilot
Radar	Raymarine Quantum Q24C
Plotter/GPS	4x Raymarine Axiom 12 Pro-S HybridTouch 12"
Wifi antenna	2016
AIS transponder	yes
AIS transceiver	yes
Camera	Raymarine



# ALTENA BLUE WATER TRAWLER 48

Navigation lights	yes
Searchlight	yes
Loudhailer	Heftronic Power Intercom
Extra info	In 2016 the BWT48 is equipped with permanent internet connection & digitenne
Extra info	All navigation equipment (inside & Flybridge) was newly installed in 2019

## EQUIPMENT

Fixed windscreen	yes
Cockpit cover	Flybridge
Bimini	yes
Cockpit cushions	yes
Cockpit table	With cover
Bathing platform	yes
Boarding ladder	stainless steel
Transom door	yes
Deck shower	warm & cold
Anchor	Pool RVS met spoel installatie
Anchor chain	60 mtr (10mm) gegalvaniseerd
Windlass	hydraulic Condor
Deck wash	Front & Aft
Davits	stainless steel
Davits controls	manual
Sea railing	stainless steel
Grab rail (superstructure)	stainless steel
Railing side opening gates	yes
Life raft (pers)	container 4 pers.niet gekeurd !
Safety harness	yes
Wiper	4x Exalto WhiperControl
Clearview window	yes
Window ventilator	yes





# ALTENA BLUE WATER TRAWLER 48

Horn	air pressure
Radar reflector	yes
Fenders	yes
Mooring lines	yes
Spare parts	yes
TV	Flatscreen Sony (lift)
TV receiver	yes
Radio	Jockrord Fosgate RMX-5
Speakers in salon	Sony
Speakers in cabin	Sony
Clock - barometer	Barigo
Fire extinguisher	3x draagbaar
Extinguisher in engine room	2x Automatic Saval



# ALTENA BLUE WATER TRAWLER 48



# ALTENA BLUE WATER TRAWLER 48



# ALTENA BLUE WATER TRAWLER 48

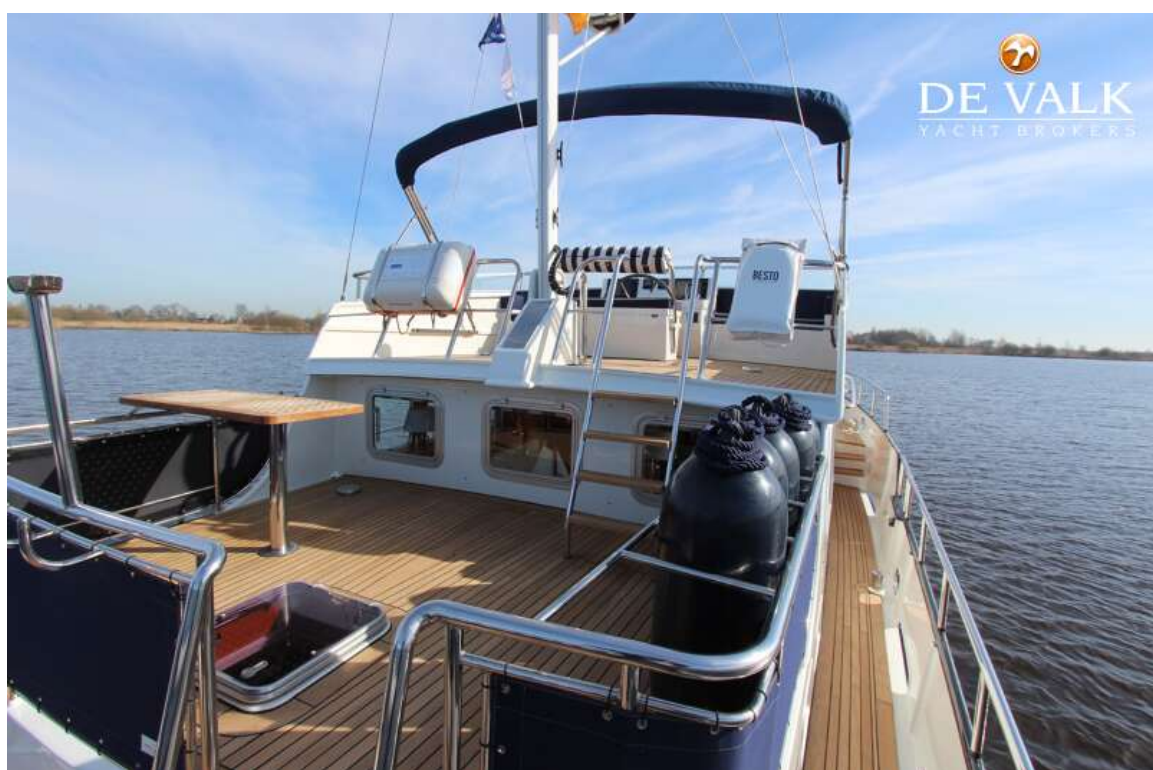
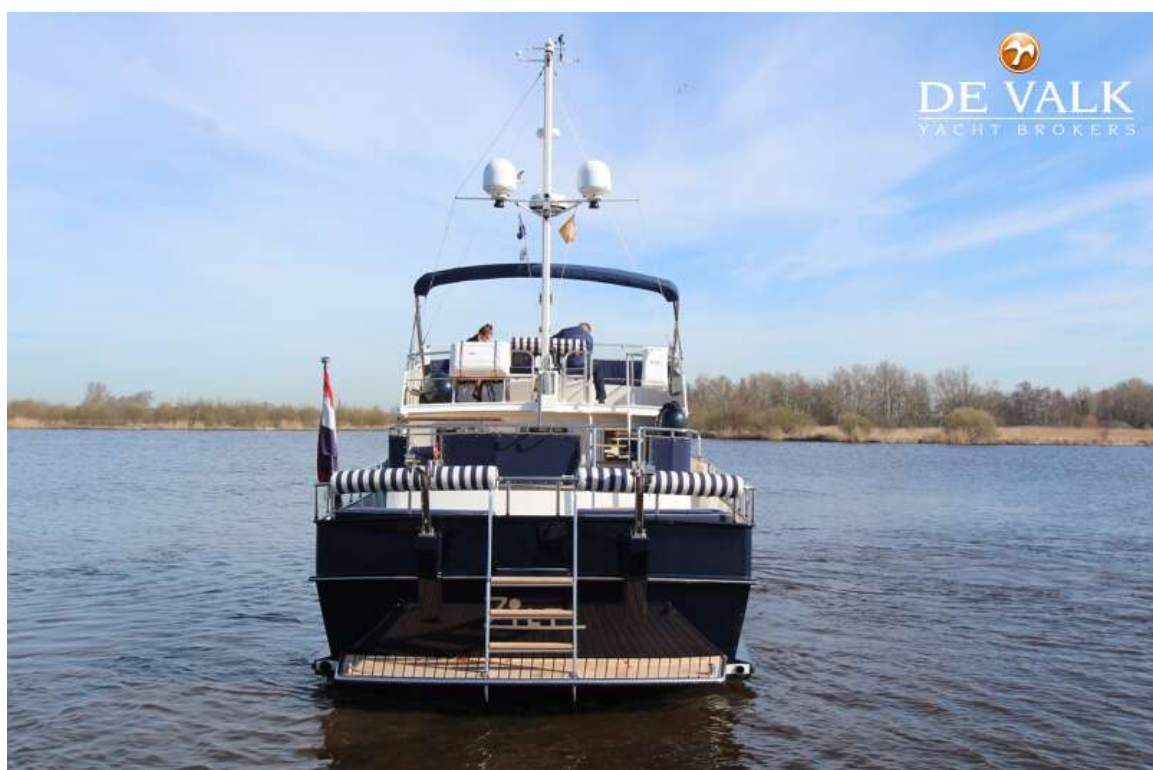




# ALTENA BLUE WATER TRAWLER 48



# ALTENA BLUE WATER TRAWLER 48

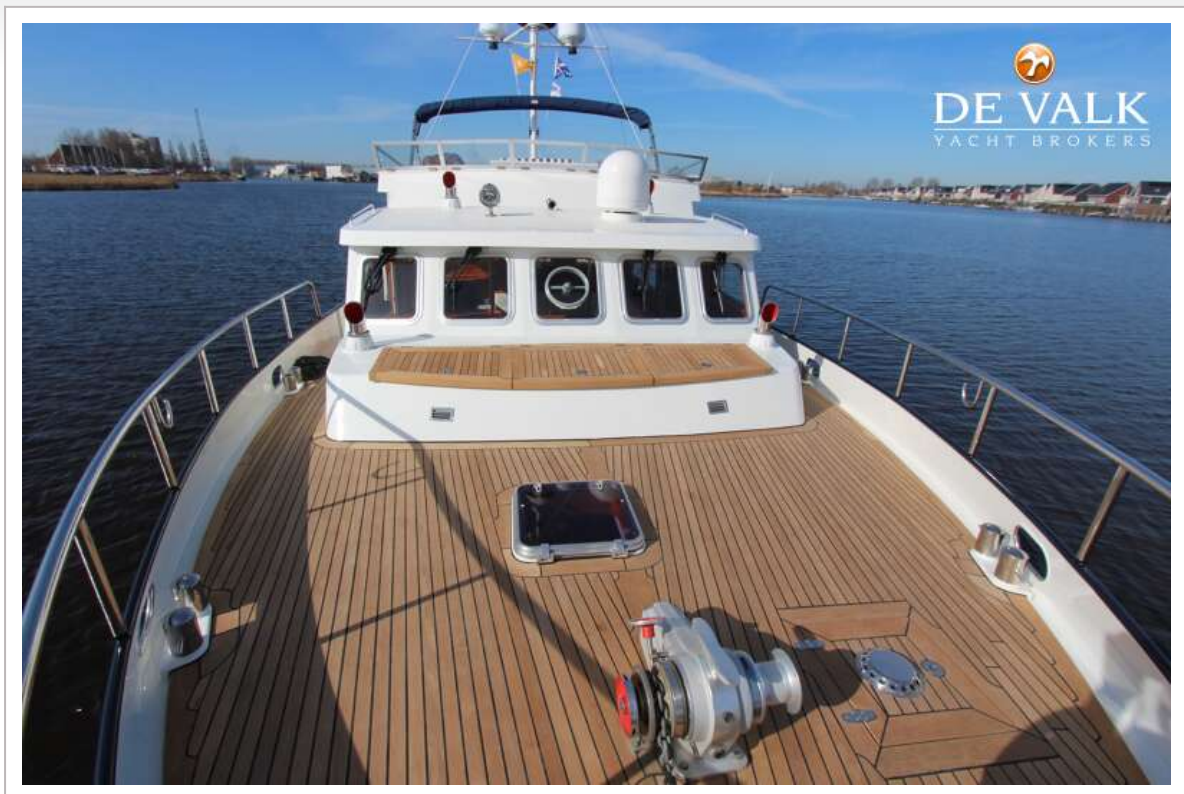




# ALTENA BLUE WATER TRAWLER 48

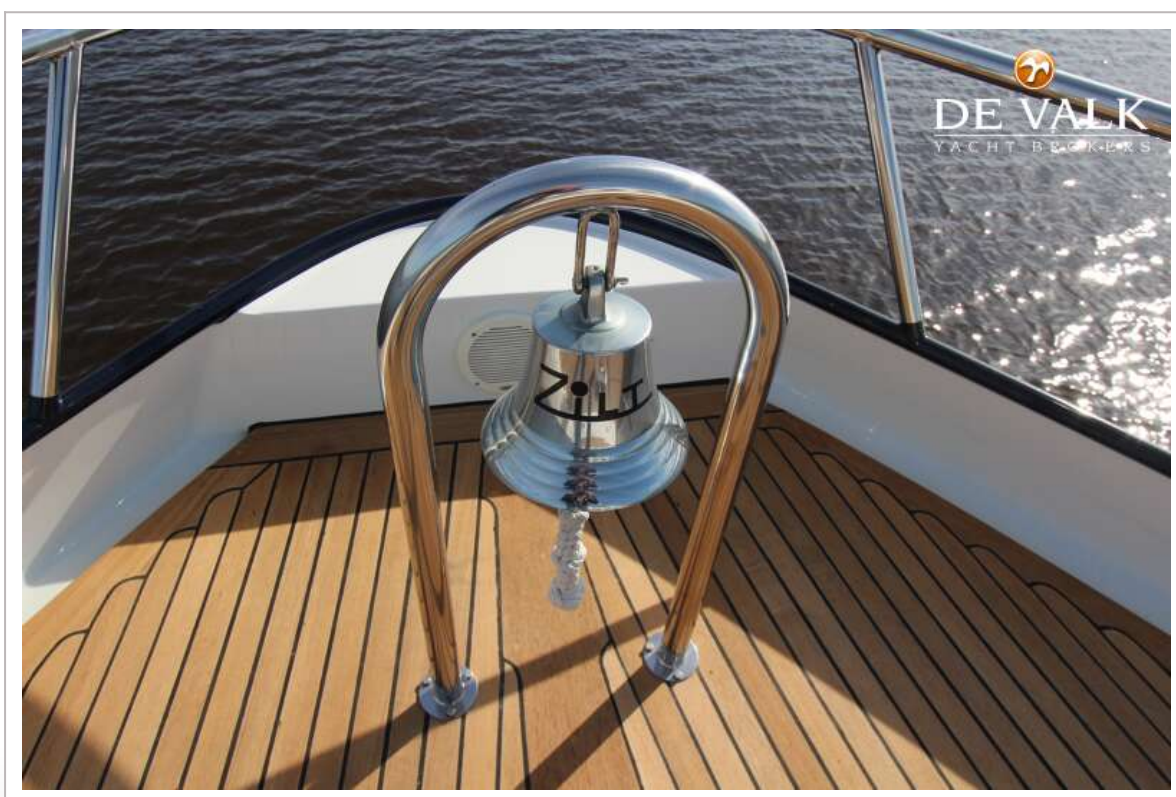
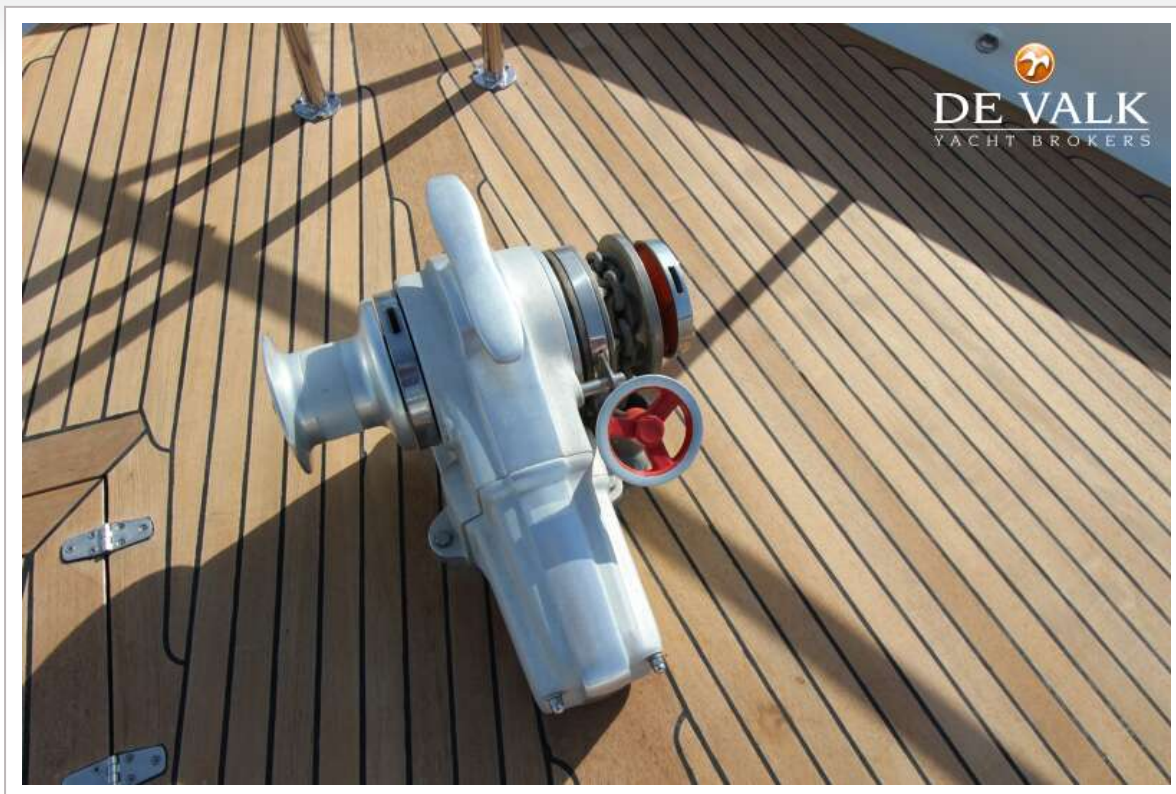


# ALTENA BLUE WATER TRAWLER 48





## ALTENA BLUE WATER TRAWLER 48





# ALTENA BLUE WATER TRAWLER 48

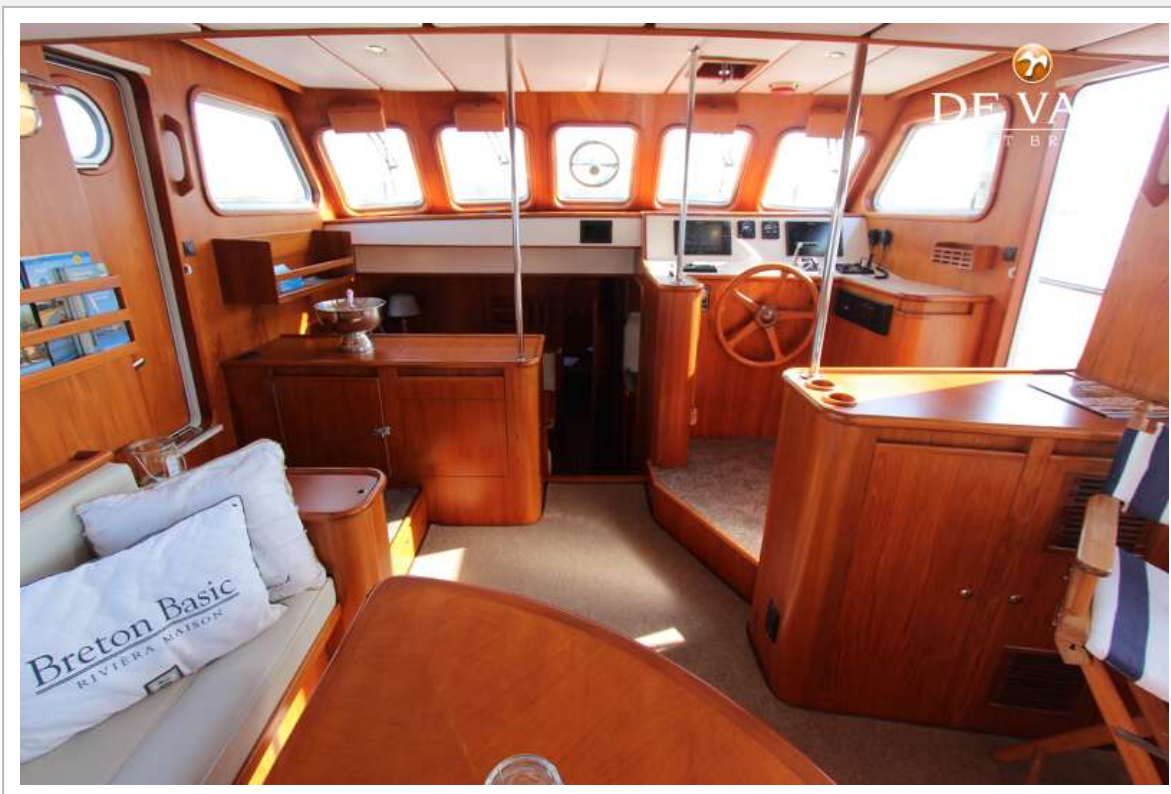




# ALTENA BLUE WATER TRAWLER 48



# ALTENA BLUE WATER TRAWLER 48





# ALTENA BLUE WATER TRAWLER 48

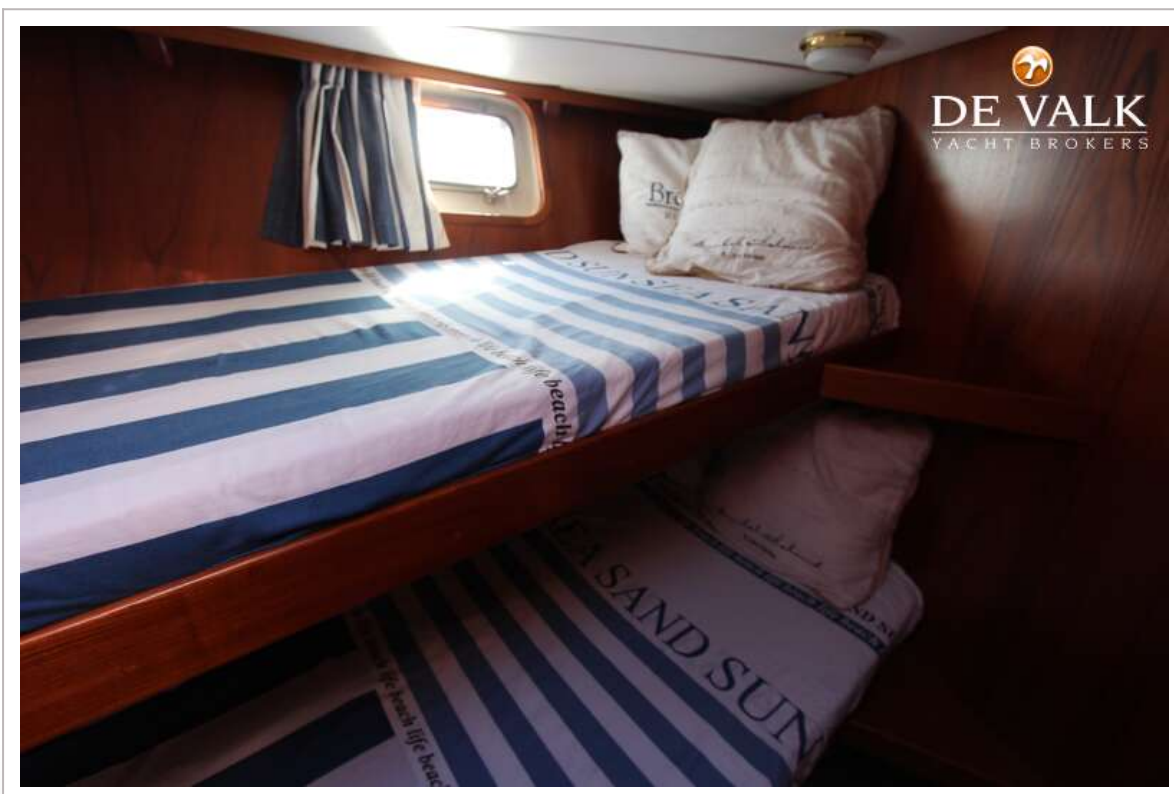
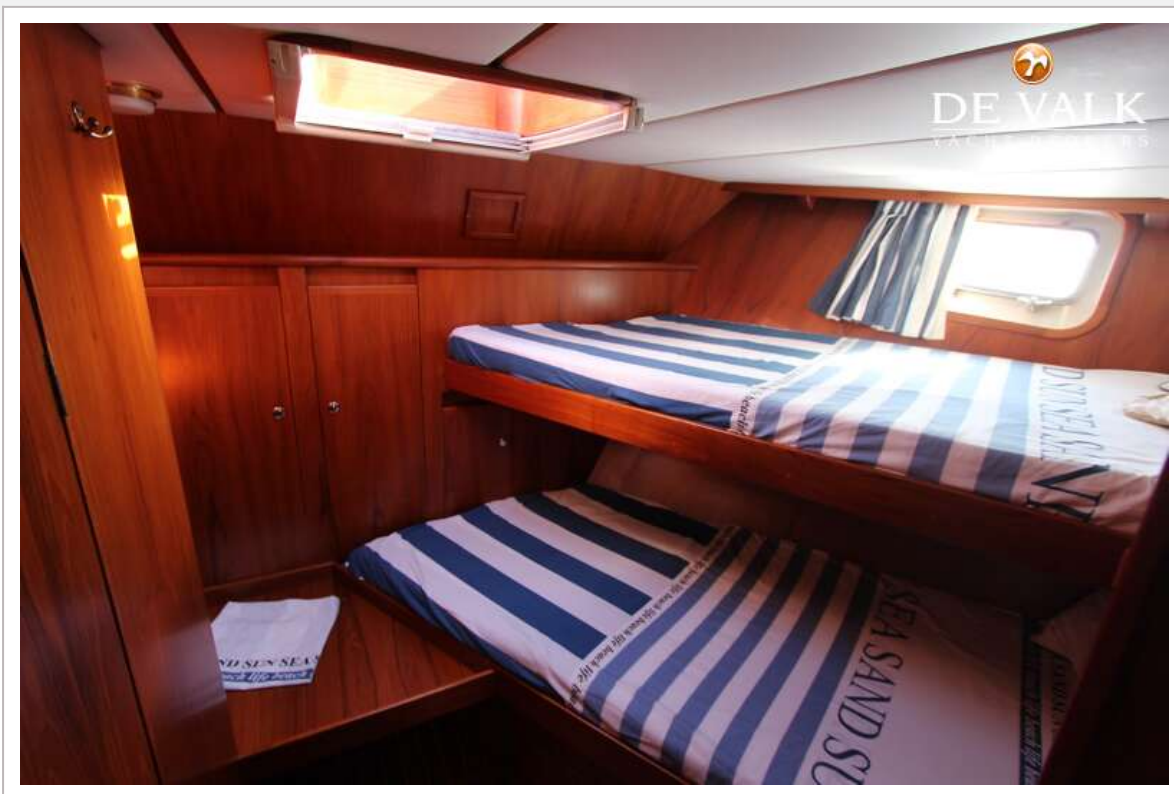


# ALTENA BLUE WATER TRAWLER 48





## ALTENA BLUE WATER TRAWLER 48

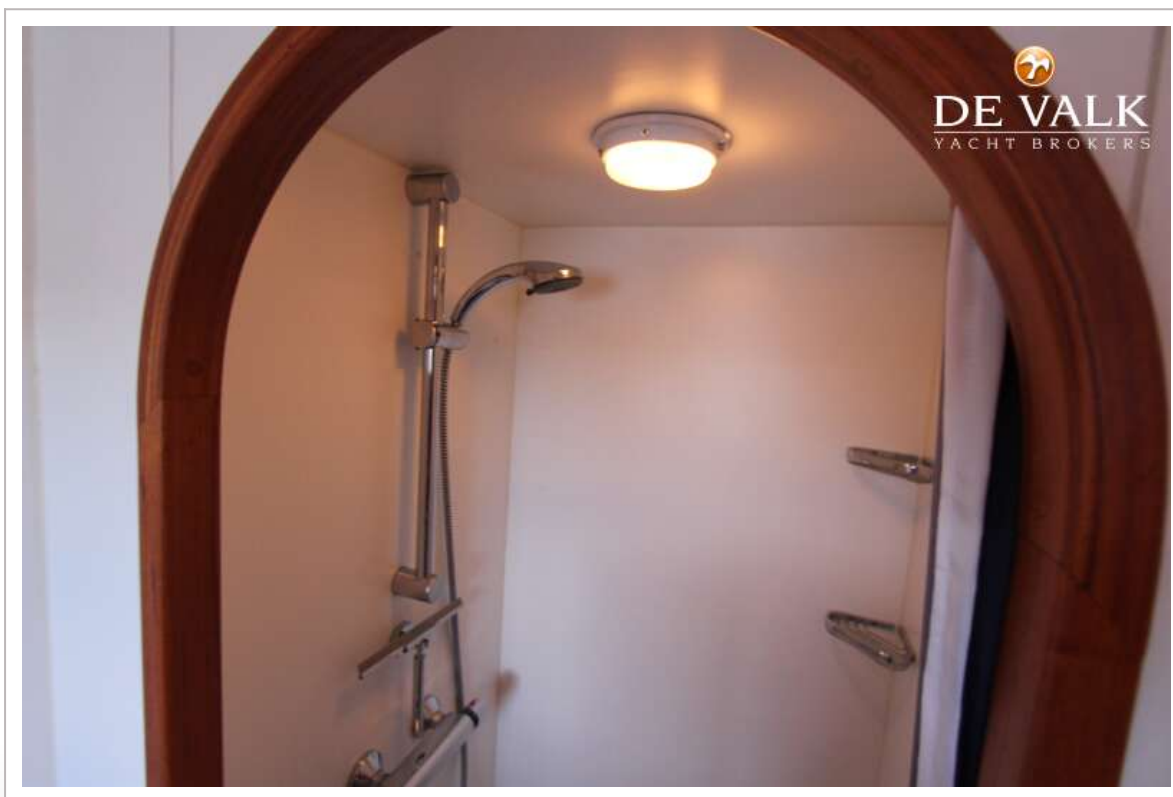


## ALTENA BLUE WATER TRAWLER 48

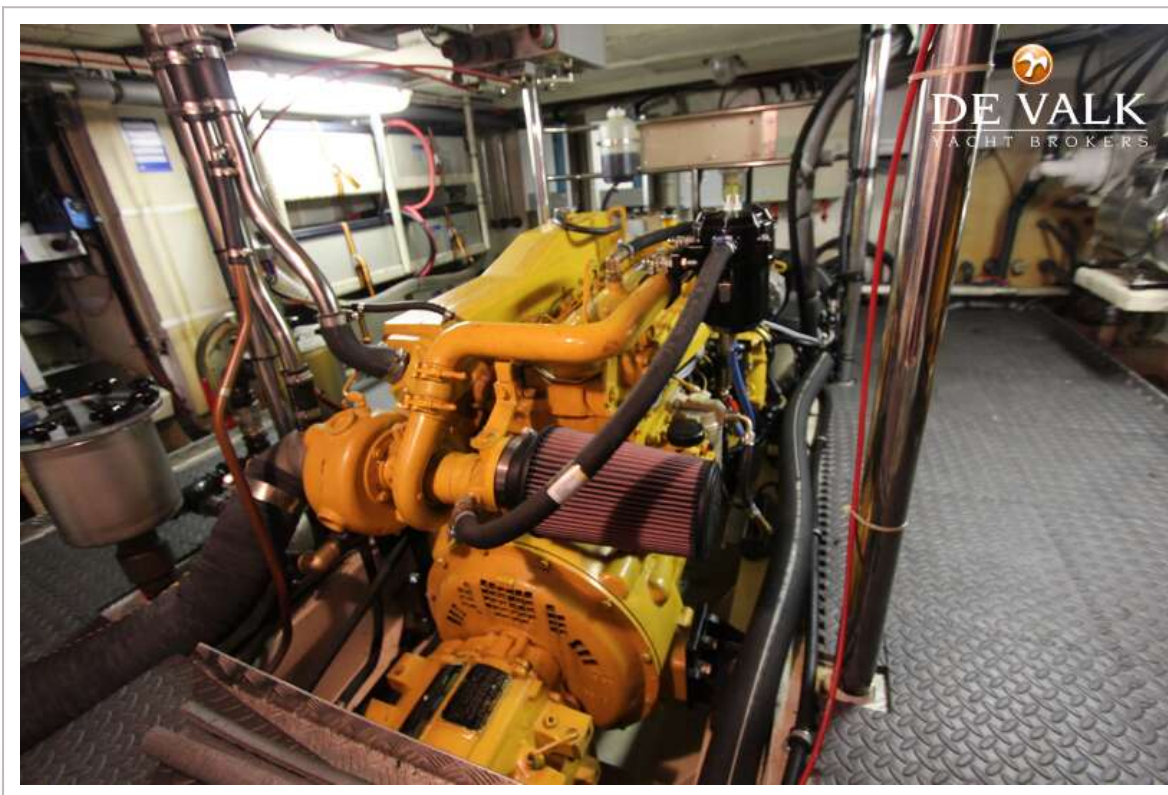
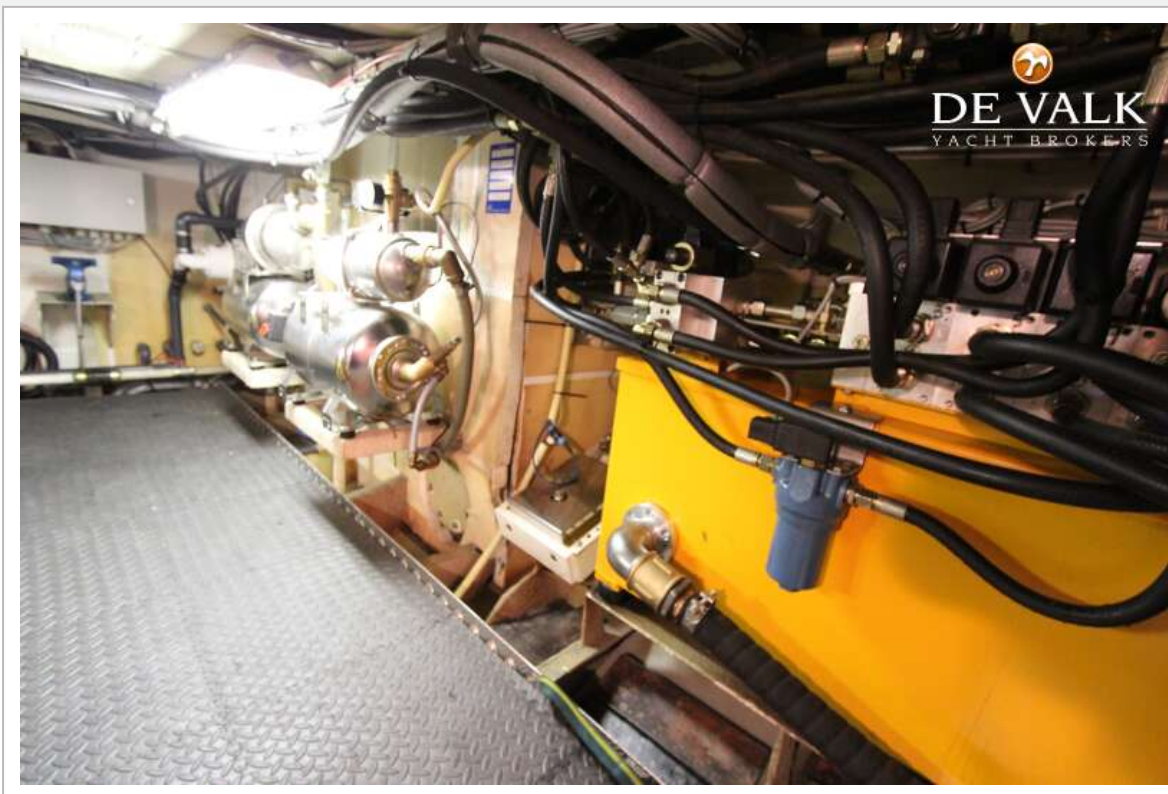




## ALTENA BLUE WATER TRAWLER 48

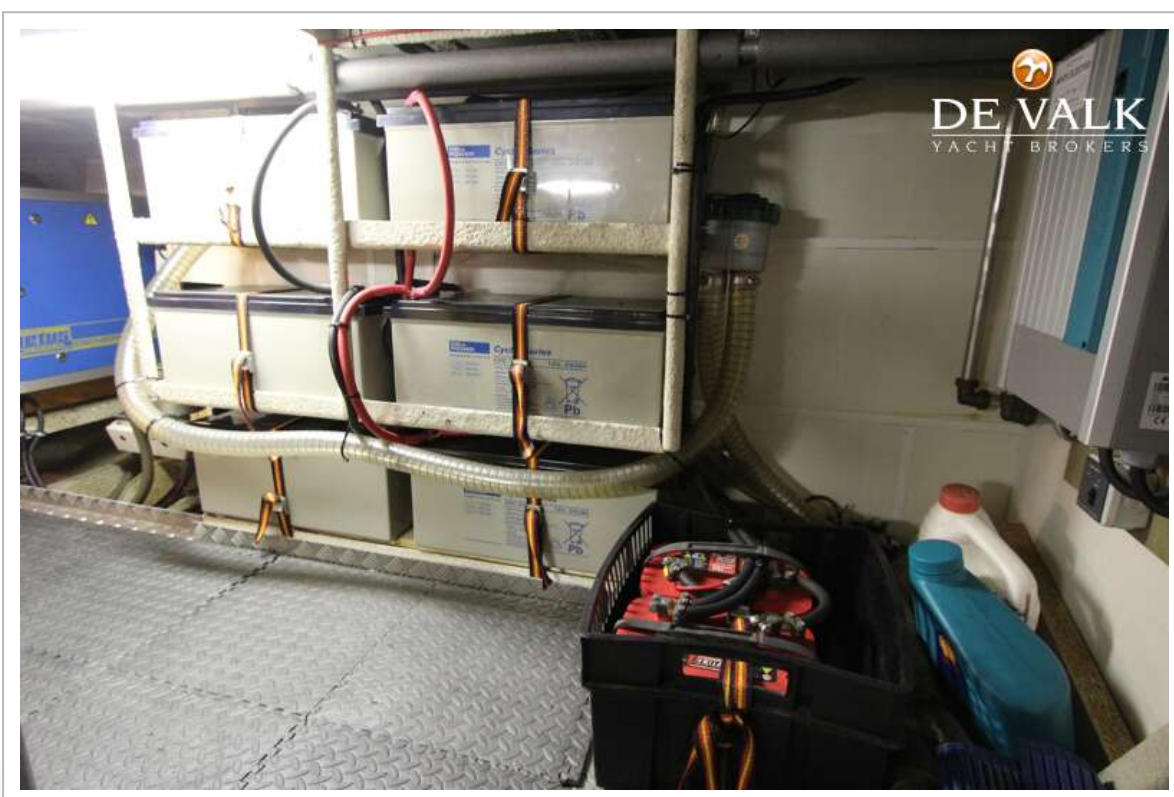
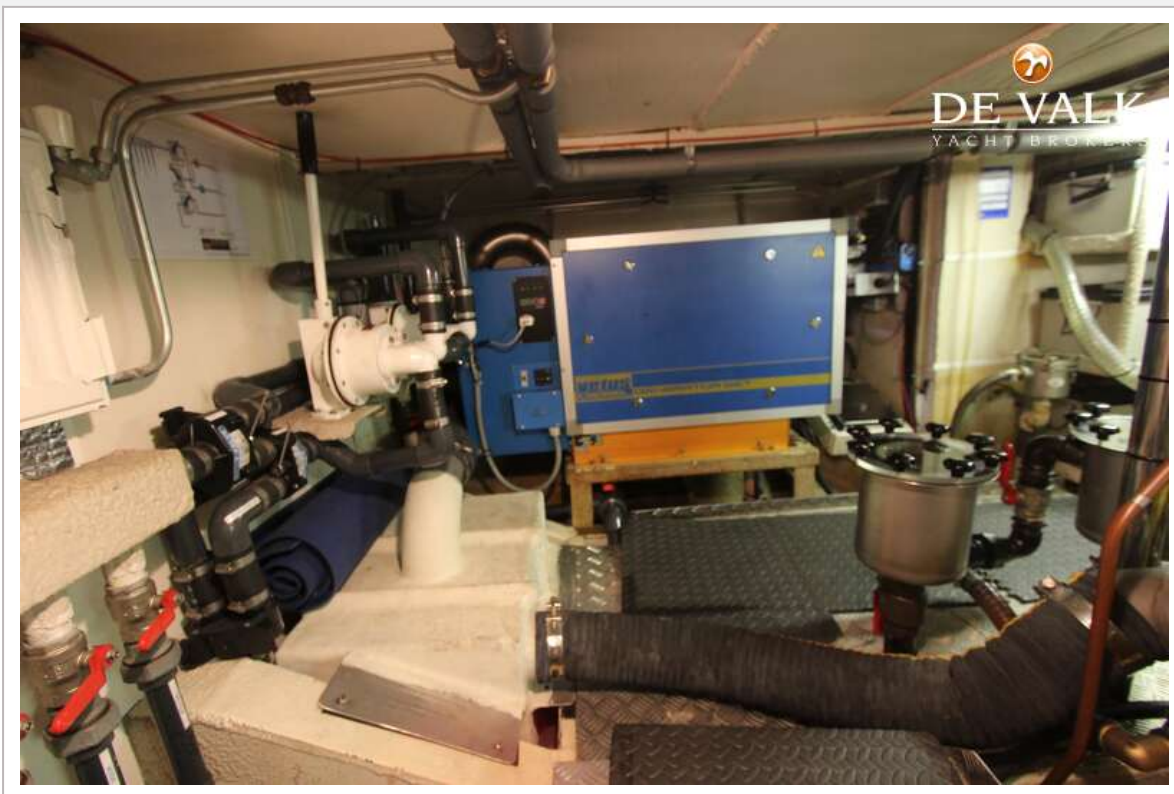


## ALTENA BLUE WATER TRAWLER 48





# ALTENA BLUE WATER TRAWLER 48



## ALTENA BLUE WATER TRAWLER 48

