



SUPER VAN CRAFT 1380

SUPER VAN CRAFT 1380

BROKER'S COMMENTS

Super van Craft 13.80 "Marienna Jacoba", built at Klaassen Shipyards Voorschoten, the Netherlands. De current owner made long journeys with her from the Netherlands until Spain. She is equipped with two DAF diesel 615 engines and a electric bowthruster. "Marienna Jacoba" is in a good state of maintainance and is ready for her next trip. Are your ready too? This Super van Craft 13.80 can be visited by appointment.

Peter Spruyt

SPECIFICATIONS

Dimensions	14.40 x 3.85 x 1.30 (m)	Builder	Klaassen Shipyards Voorschoten
Built	1988	Cabins	2
Material	Steel	Berths	5
Engine(s)	2 x DAF DF 615 M diesel	Hp/Kw	2 x 120.00 (hp), 88.20 (kw)
Asking price	sold (VAT)	Lying	at sales office

CONTACT

Sales office	De Valk Sneek	Telephone	+31 (0)515 42 80 30
Address	Zwolsmanweg 7 8606 KC Sneek NL	E-mail	sneek@devalk.nl

DISCLAIMER

These particulars are given in good faith as supplied but cannot be guaranteed.



SUPER VAN CRAFT 1380

GENERAL

Model	SUPER VAN CRAFT 1380
Type	motor yacht
LOA (m)	14,40
Beam (m)	3,85
Draft (m)	1,30
Air draft (m)	0,00
Headroom (m)	1,95
Year built	1988
Builder	Klaassen Shipyards Voorschoten
Country	The Netherlands
Displacement (t)	18
Hull material	steel
Hull colour	off-white
Hull shape	round-bilged
Keel type	box keel
Superstructure material	wood
Rubbing strake	stainless steel
Deck material	steel
Deck finish	teak
Antifouling (year)	yes
Window frame	aluminium
Window material	glass
Portholes	aluminium
Mast can be lowered	manual
Fuel tank (litre)	1000
Level indicator (fuel tank)	yes
Freshwater tank (litre)	1400
Level indicator (freshwater)	yes
Wheel steering	chain steering
Outside helm position	chain steering



ACCOMMODATION

Cabins	2
Berths	5
Interior	teak
Floor	teak and holly
Saloon	yes
Heating	diesel ducted hot air Eberspracher
Aft Cabin	yes
Dinette to convert into berth	yes
Galley	yes
Countertop	plastic
Sink	stainless steel
Cooker	calor gas
Microwave	yes
Fridge	with freezer compartment Isotherm 100 l.
Hot water system	220V/engine/heating
Water pressure system	electrical
Kettle	yes
Coffee maker	yes
Owners cabin	French bed
Wardrobe	hanging and drawers
Toilet	separate
Toilet system	electric
Wash basin	at the toilet
Shower	separate
Guest cabin 1	twin single + 1 (3)
Wardrobe	hanging and drawers
Toilet	separate
Toilet system	electric
Wash basin	at the toilet
Washing machine	Candy Aquamatic 3



MACHINERY

No of engines	2
Make	DAF
Type	DF 615 M
HP	120,00
kW	88,20
Fuel	diesel
Year installed	1987
Maximum speed (kn)	8,5
Cruising speed (kn)	5,5
Engine hours	4286/ 4362 (16-4-2015)
Engine cooling system	seawater
Drive	shaft
Engine controls	mechanical
Gearbox	hydraulic
Bowthruster	electric
Sternthruster	electric
Propeller type	fixed
Propeller shaft material	stainless steel
Shaft lubrication	grease
Electric bilge pump	yes
Bilge alarm	yes
Generator	wet exhaust
Start battery	yes
Service battery	yes
Generator battery	yes
Battery charger	Victron 24/30
Shorepower	with cable

NAVIGATION

Electric compass	Shipshead
------------------	-----------



Depth sounder	yes
Log	Sumlog SL
VHF	Shipmate 8300
Autopilot	Neco Marine
Rudder angle indicator	VDO
Plotter	Geonav 7 Wide
Loudhailer	yes

EQUIPMENT

Fixed windscreen	yes
Sprayhood with grab rail	yes
Bathing platform	yes
Boarding ladder	yes
Gangway	yes
Deck shower	yes
Anchor	Pool
Anchor chain	yes
Windlass	electrical
Davits	steel
Davits controls	manual
Sea railing	steel Teak &
Railing side opening gates	5x
Wiper	3x
Horn	electric
Fenders	yes
Mooring lines	yes
TV	yes
Radio-cd player	VDO
Speakers in salon	yes
Speakers in cabin	yes
Clock - barometer	yes



Fire extinguisher

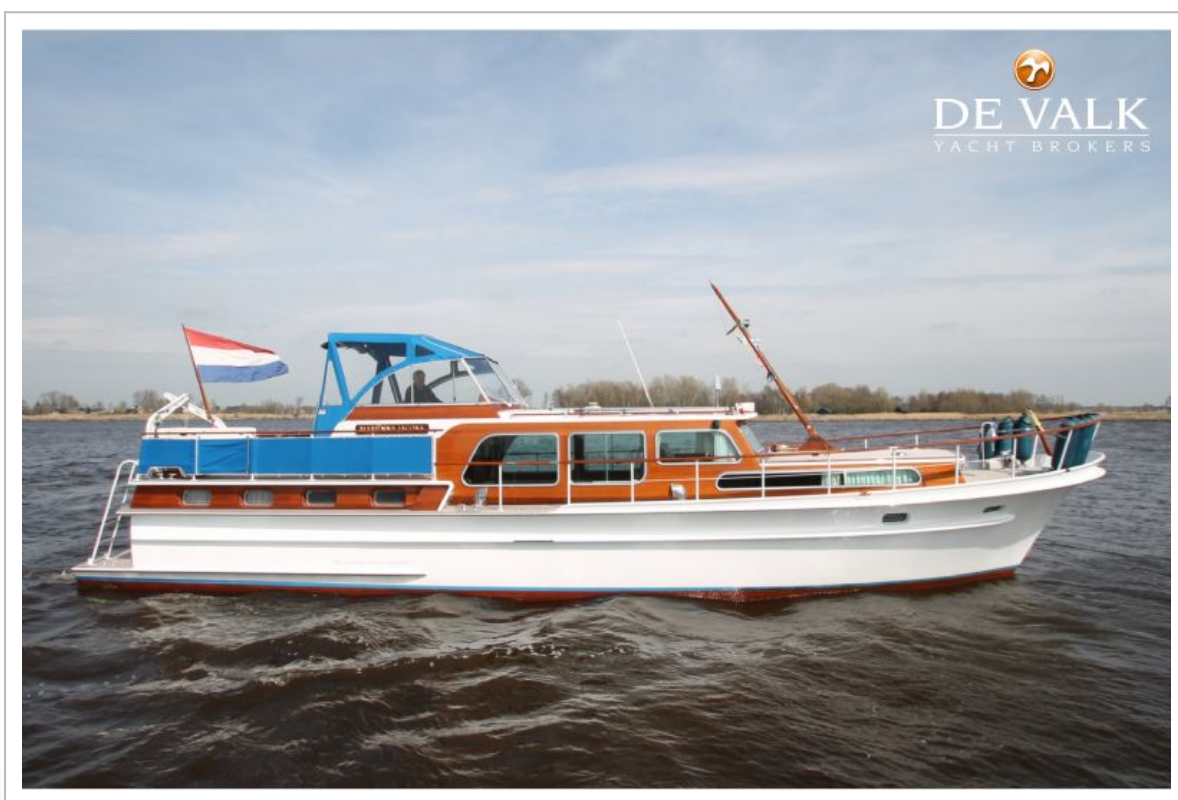
yes



SUPER VAN CRAFT 1380



SUPER VAN CRAFT 1380



SUPER VAN CRAFT 1380



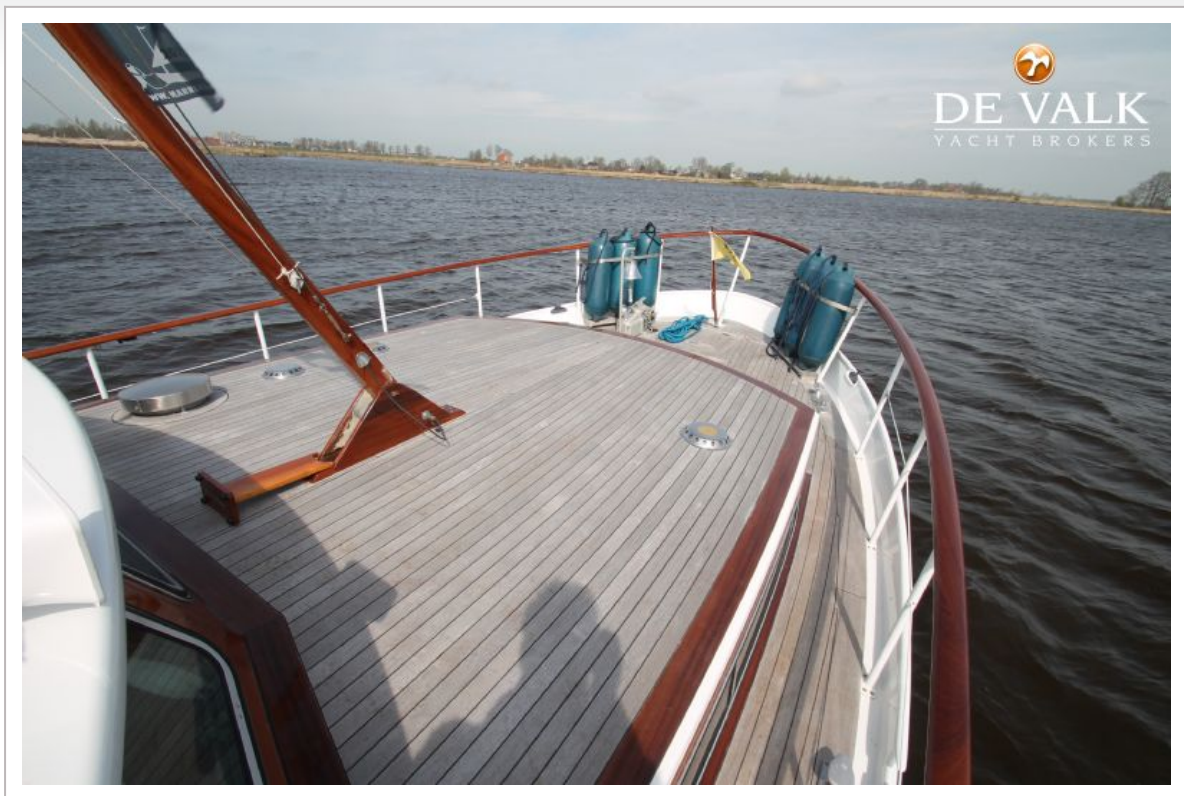
SUPER VAN CRAFT 1380



SUPER VAN CRAFT 1380



SUPER VAN CRAFT 1380



SUPER VAN CRAFT 1380



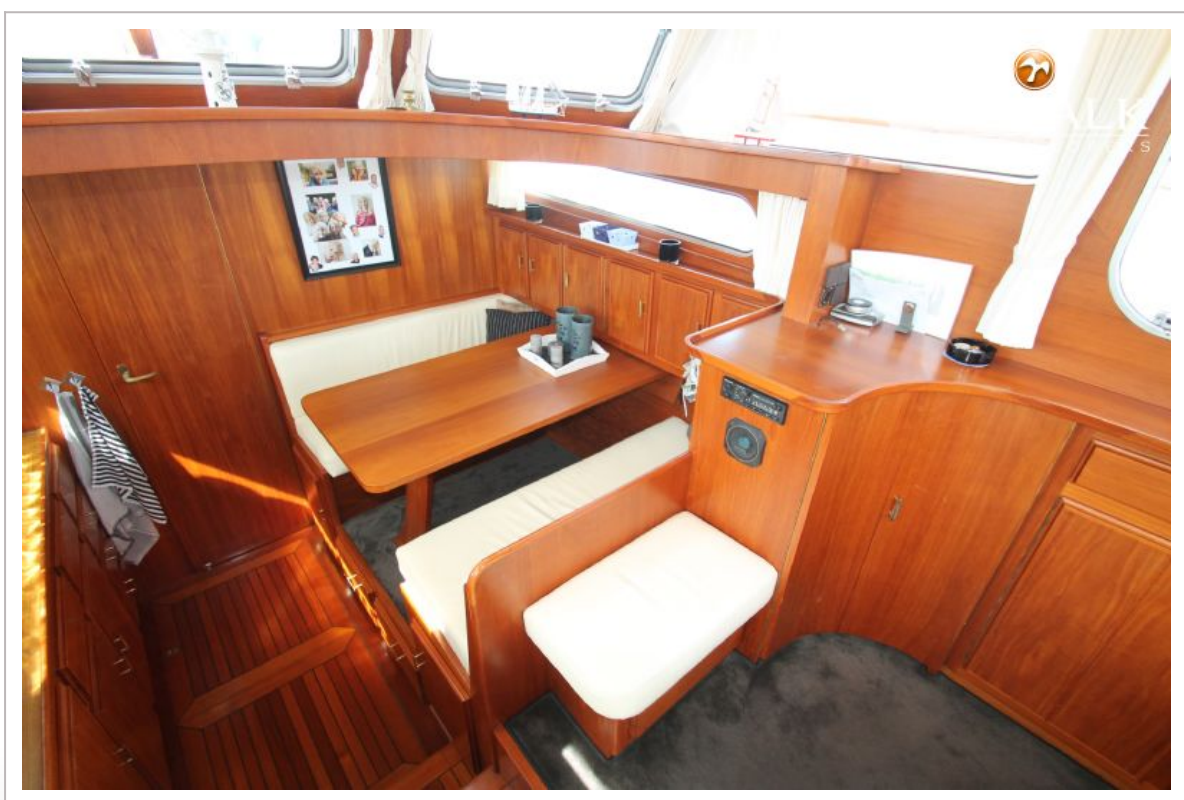
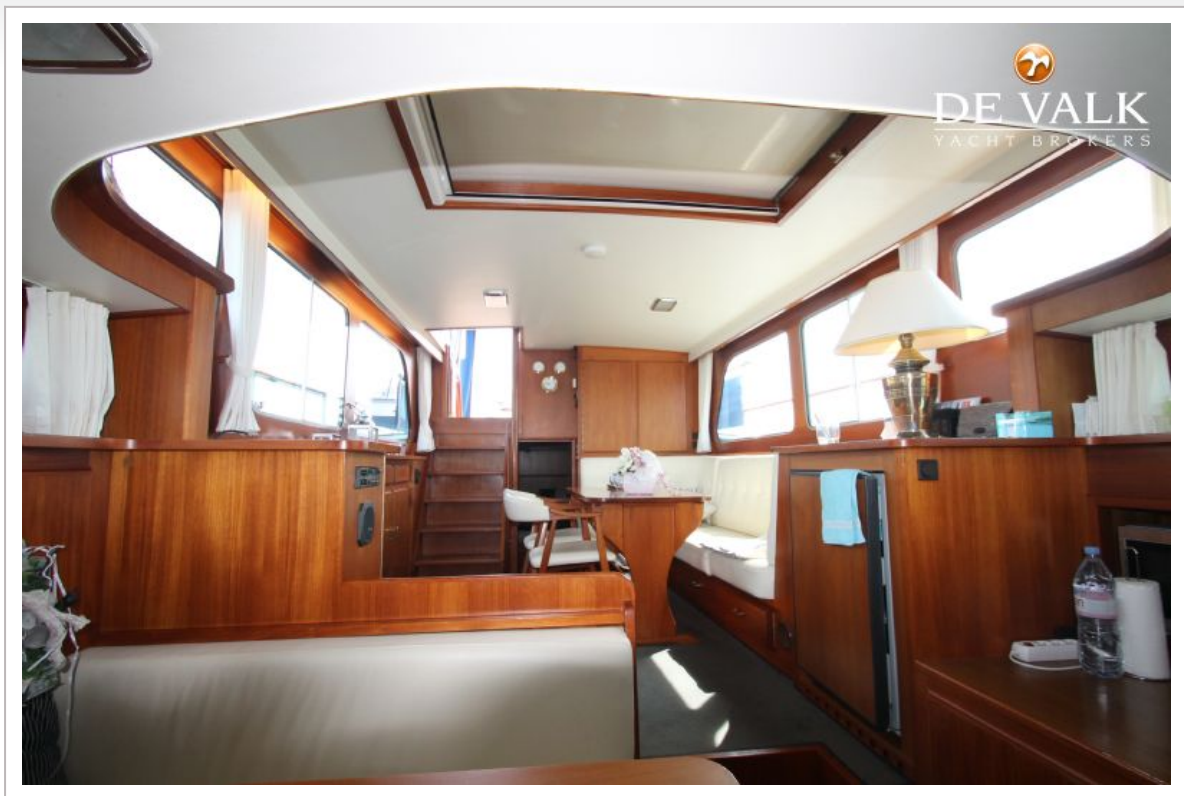
SUPER VAN CRAFT 1380



SUPER VAN CRAFT 1380



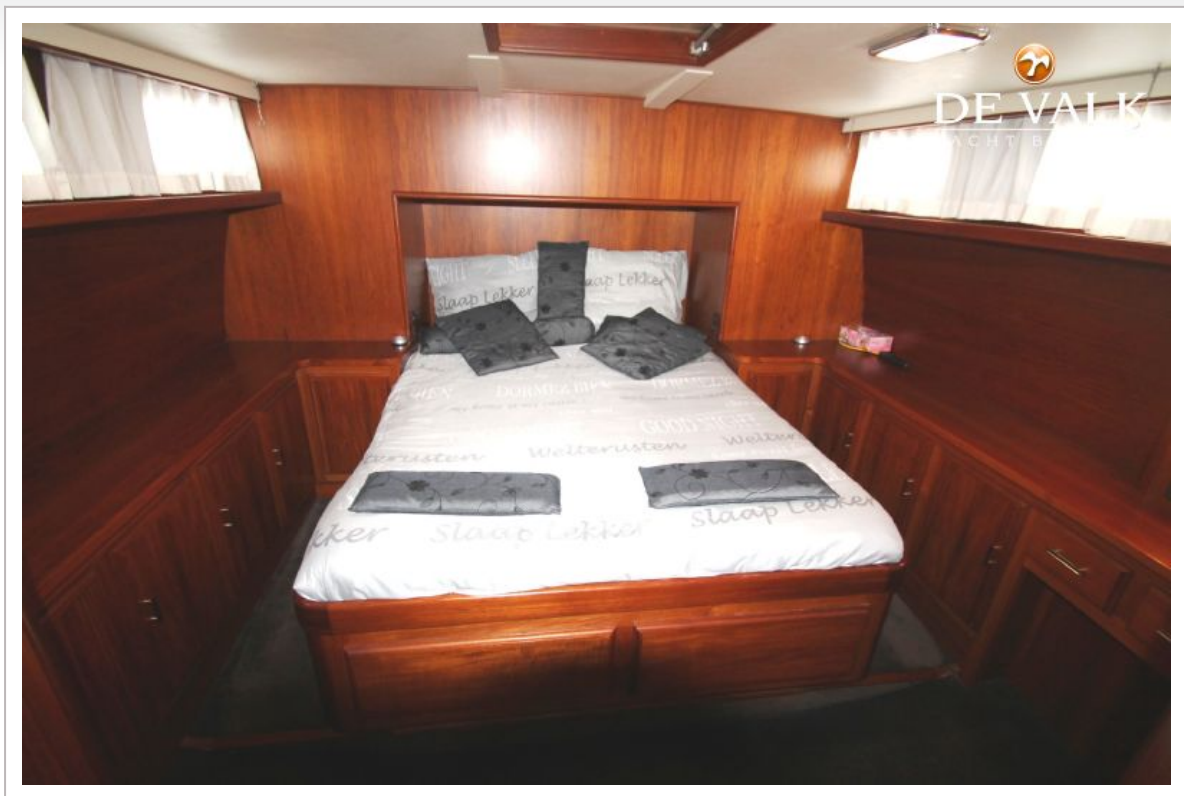
SUPER VAN CRAFT 1380



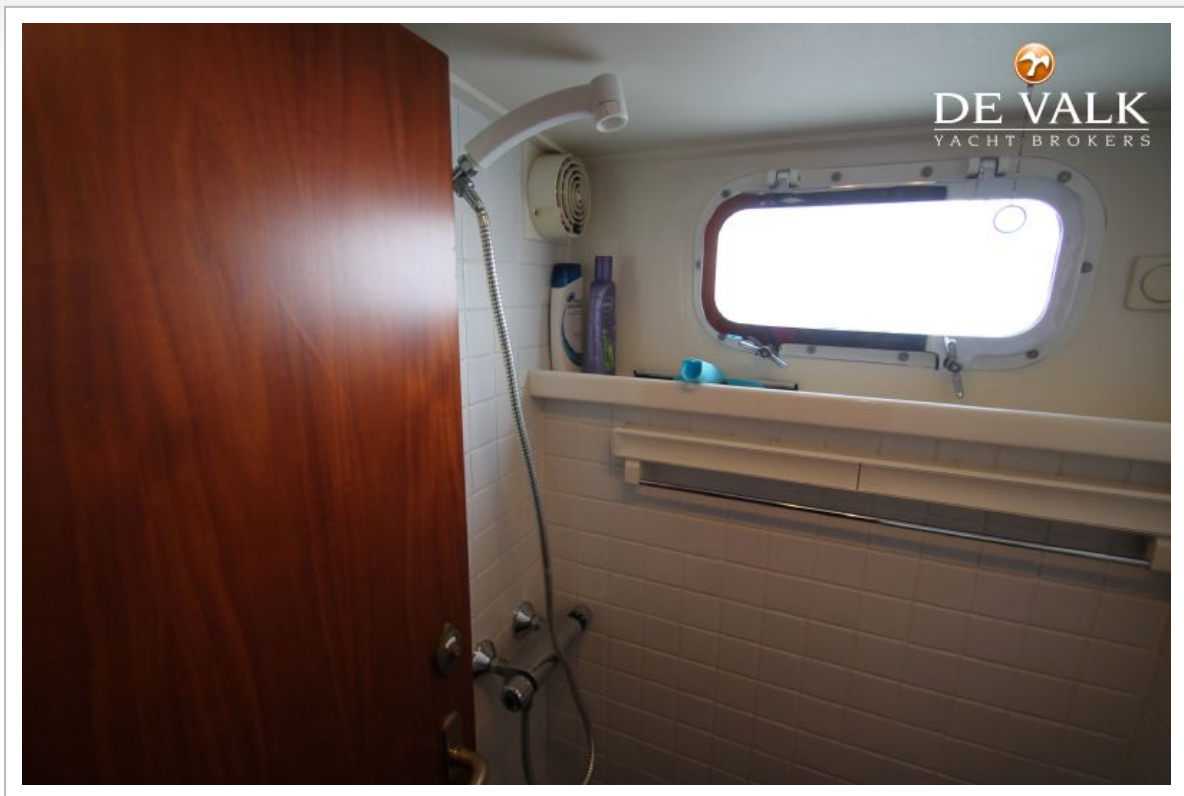
SUPER VAN CRAFT 1380



SUPER VAN CRAFT 1380



SUPER VAN CRAFT 1380



SUPER VAN CRAFT 1380

