



## VALK CHALLENGER ROYAL 45



# VALK CHALLENGER ROYAL 45

## BROKER'S COMMENTS

Valk Challenger 45 "Amon" is a very spacious motor yacht and offers good possibilities for a longer stay on board or even to live. Provided with a large owners cabin, storage room and guest cabin/dinette. Equipped with central heating, DAF diesel engine, Cupa electric bow thruster etc.

*Henk de Vries*

## SPECIFICATIONS

<b>Dimensions</b>	14.10 x 4.25 x 1.25 (m)	<b>Builder</b>	Japko Shipyards
<b>Built</b>	1993	<b>Cabins</b>	2
<b>Material</b>	Steel	<b>Berths</b>	4
<b>Engine(s)</b>	1 x DAF DF615 diesel	<b>Hp/Kw</b>	138.78 (hp), 102.00 (kw)
<b>Asking price</b>	sold (VAT )	<b>Lying</b>	at sales office

## CONTACT

<b>Sales office</b>	De Valk Sneek	<b>Telephone</b>	+31 (0)515 42 80 30
<b>Address</b>	Zwolsmanweg 7 8606 KC Sneek NL	<b>E-mail</b>	sneek@devalk.nl

## DISCLAIMER

These particulars are given in good faith as supplied but cannot be guaranteed.



# VALK CHALLENGER ROYAL 45

## GENERAL

Model	VALK CHALLENGER ROYAL 45
Type	motor yacht
LOA (m)	14,10
Beam (m)	4,25
Draft (m)	1,25
Year built	1993
Builder	Japko Shipyards
Country	The Netherlands
Hull material	steel
Hull colour	white
Hull shape	hard chine
Superstructure material	steel
Deck material	steel
Deck finish	anti-slip paint
Window frame	aluminum
Window material	glass
Radar arch	collapsible
Fuel tank (litre)	stainless steel 1500
Freshwater tank (litre)	stainless steel 750
Blackwater tank (litre)	stainless steel 750
Wheel steering	hydraulic

## ACCOMMODATION

Cabins	2
Berths	4
Floor	teak
Aft deck	yes
Saloon	yes
Heating	central heating Kabola
Aft Cabin	yes



# VALK CHALLENGER ROYAL 45

Dinette	yes
Galley	yes
Countertop	
Sink	stainless steel
Cooker	calor gas 4-burner
Oven	yes
Extractor	yes
Microwave	yes
Fridge	yes
Hot water system	on central heating
Water pressure system	yes
Owners cabin	french bed
Wardrobe	yes
Bathroom	yes
Toilet	shared
Toilet system	electric
Wash basin	in the bathroom
Shower	shared
Guest cabin 1	v-bed Settee in front convertible into berth
Wardrobe	yes
Toilet	shared
Toilet system	electric
Guest cabin 2	At this moment storage cabin
Washing machine	yes

## MACHINERY

No of engines	1
Make	DAF
Type	DF615
HP	138,78
kW	102,00



# VALK CHALLENGER ROYAL 45

Fuel	diesel
Year installed	1993
Maximum speed (kn)	8
Cruising speed (kn)	6
Consumption (l/hr)	7/1800 rpm
Engine hours	1710
Drive	shaft
Engine controls	manual
Gearbox	hydraulic
Bowthruster	electric Cupa
Propeller type	fixed
Electric bilge pump	yes
Electrical installation	24/230V
Generator	yes
Batteries	yes
Battery charger/inverter	Vetus 24/2000/50
Shorepower	with cable

## NAVIGATION

Depth sounder	Vetus combi-3
Log	Vetus combi-3
GPS	Furuno GP-31
Plotter	Raytheon RC630
Searchlight	yes

## EQUIPMENT

Sprayhood	yes
Cockpit cover	yes
Cockpit cushions	yes
Cockpit table	yes
Cockpit chairs	yes



# VALK CHALLENGER ROYAL 45

Bathing platform	yes
Boarding ladder	stainless steel
Anchor	yes
Anchor chain	yes
Windlass	manual Lofrance
Davits	stainless steel
Sea railing	stainless steel
Wiper	yes
Fenders	yes
Mooring lines	yes





# VALK CHALLENGER ROYAL 45



# VALK CHALLENGER ROYAL 45

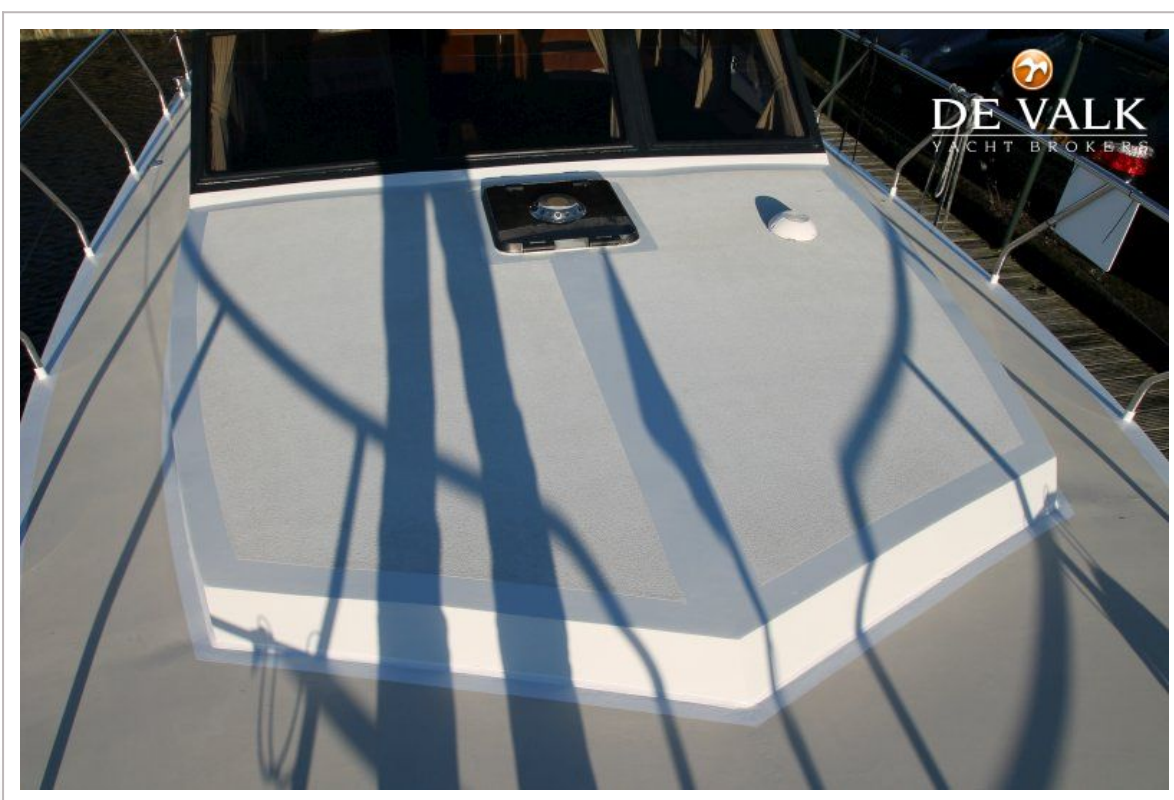




# VALK CHALLENGER ROYAL 45



# VALK CHALLENGER ROYAL 45

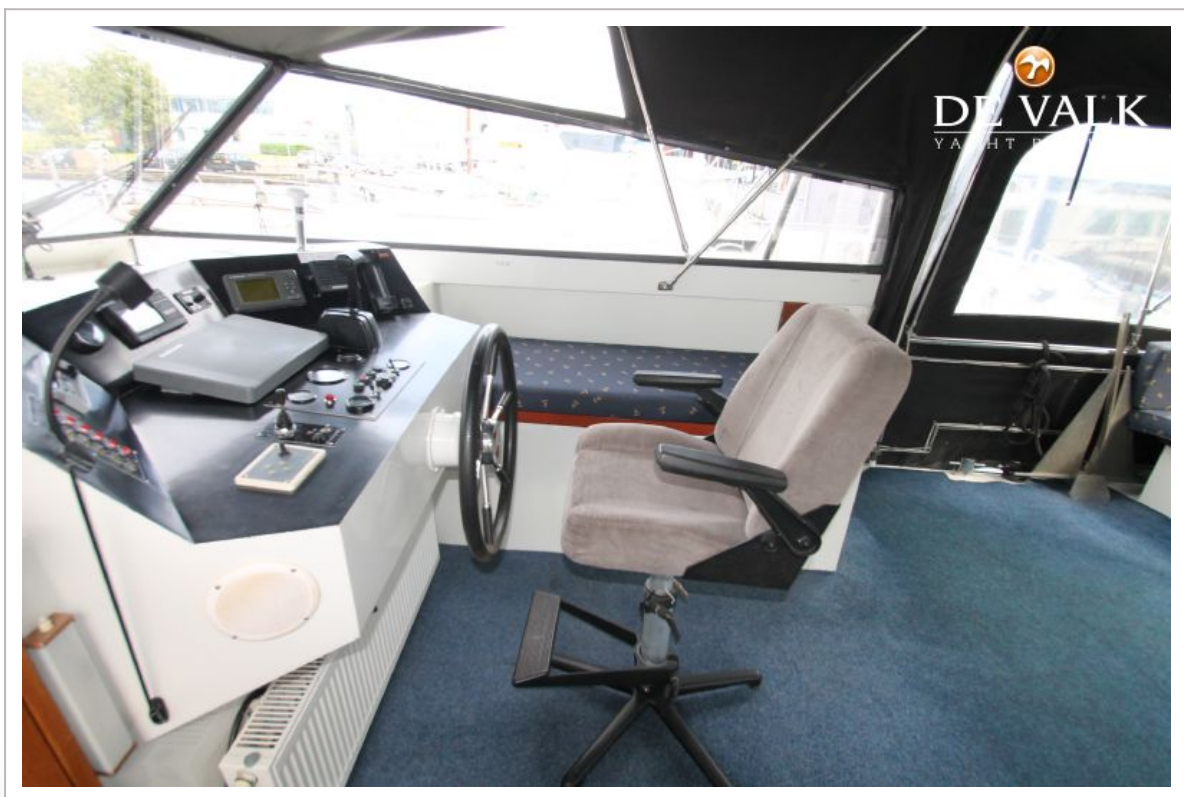




# VALK CHALLENGER ROYAL 45



# VALK CHALLENGER ROYAL 45



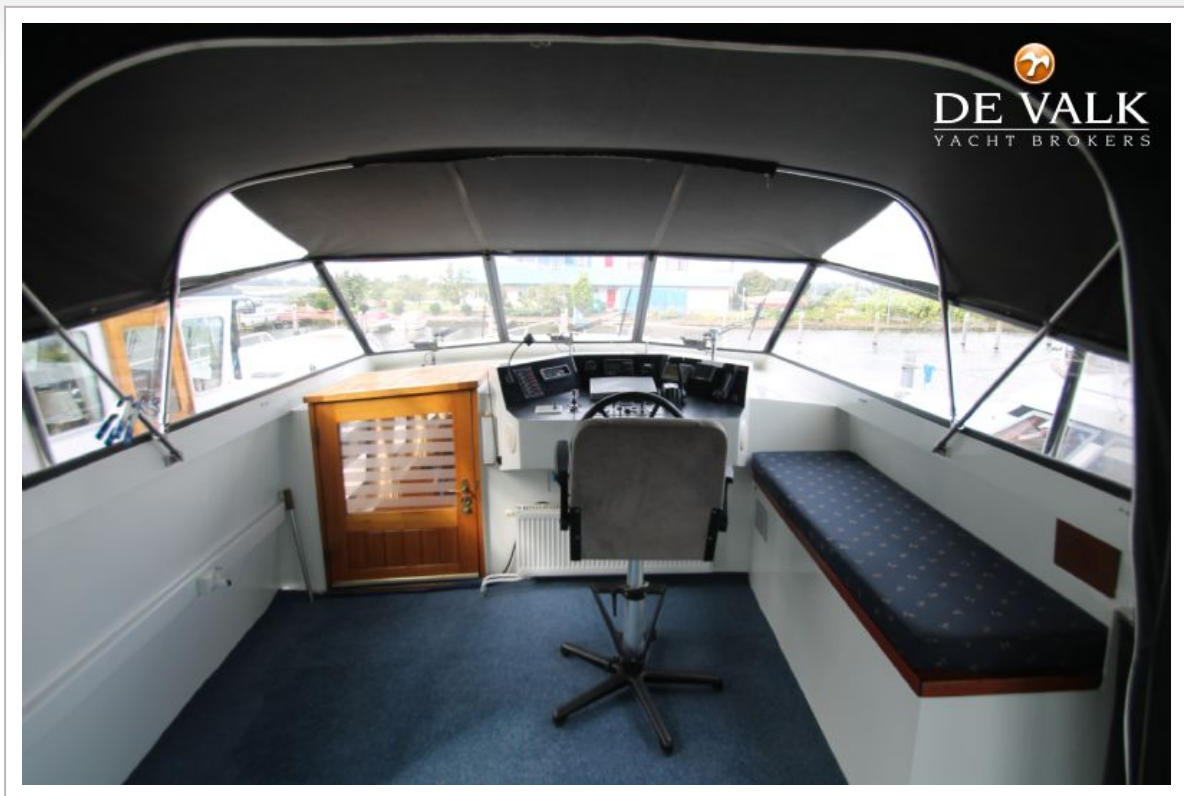


# VALK CHALLENGER ROYAL 45





# VALK CHALLENGER ROYAL 45



# VALK CHALLENGER ROYAL 45

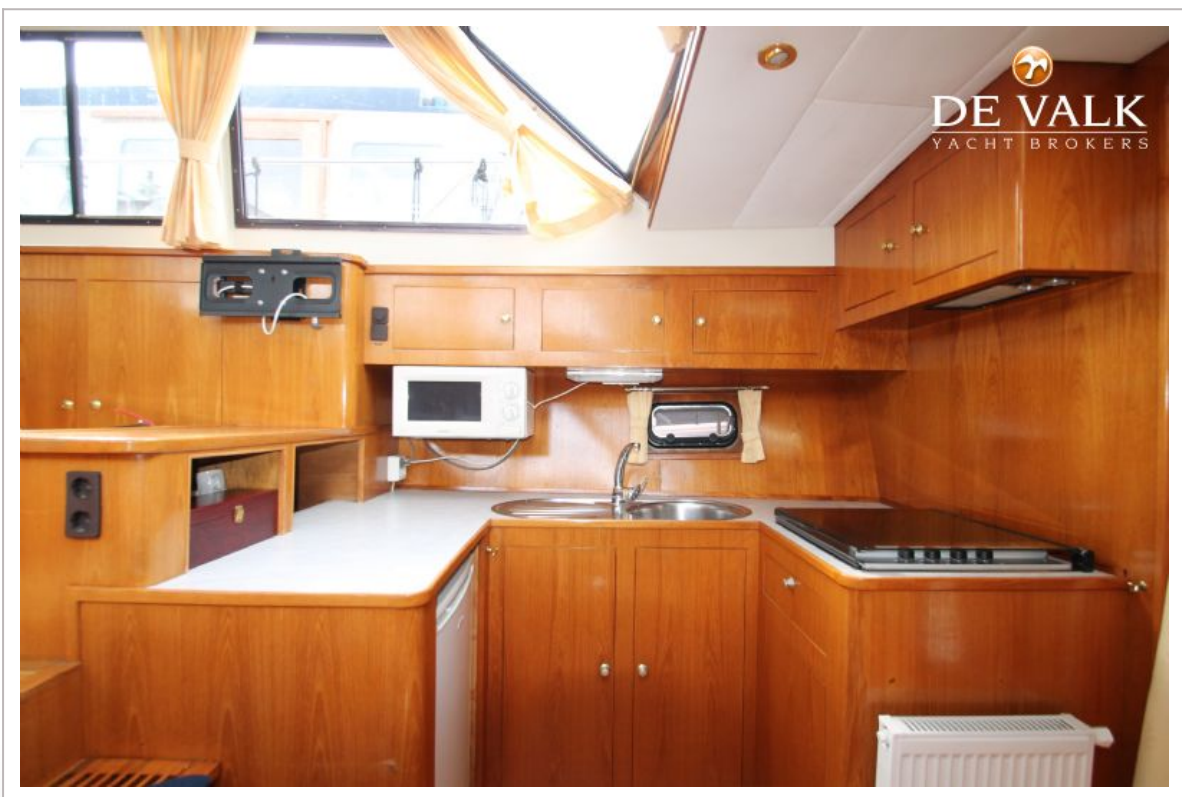
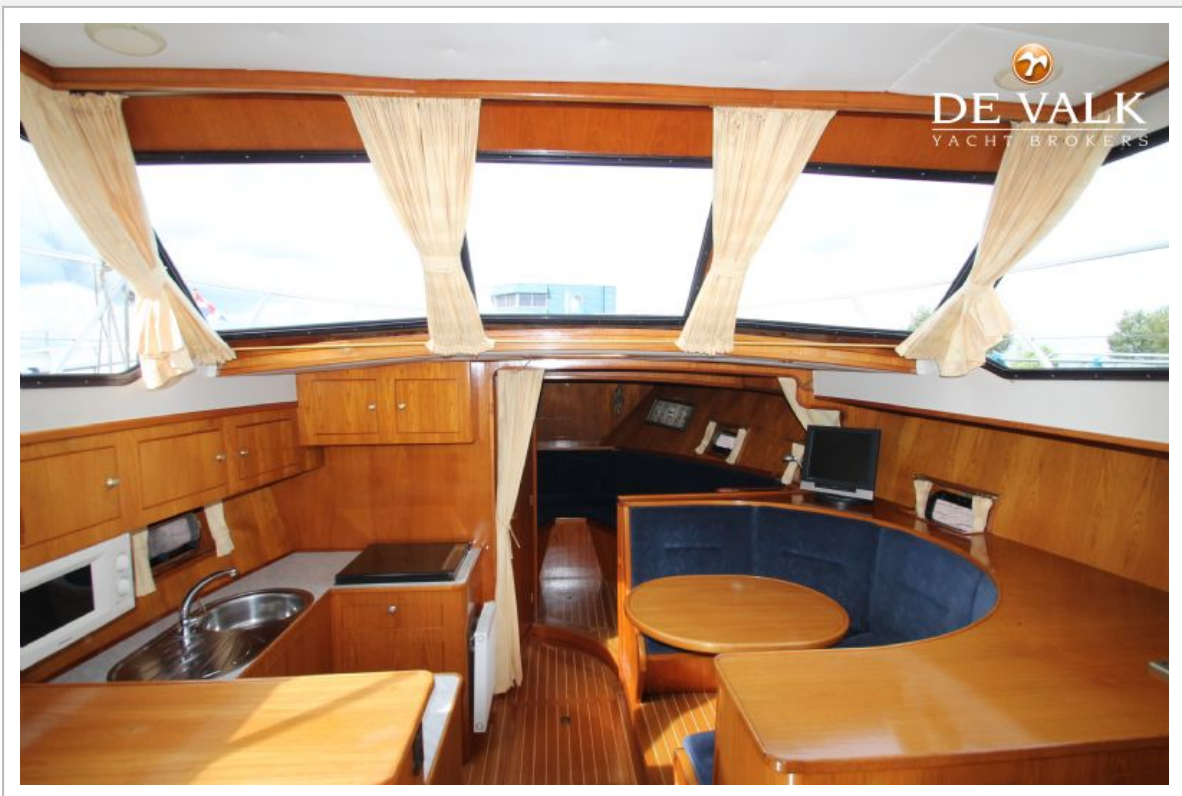




# VALK CHALLENGER ROYAL 45

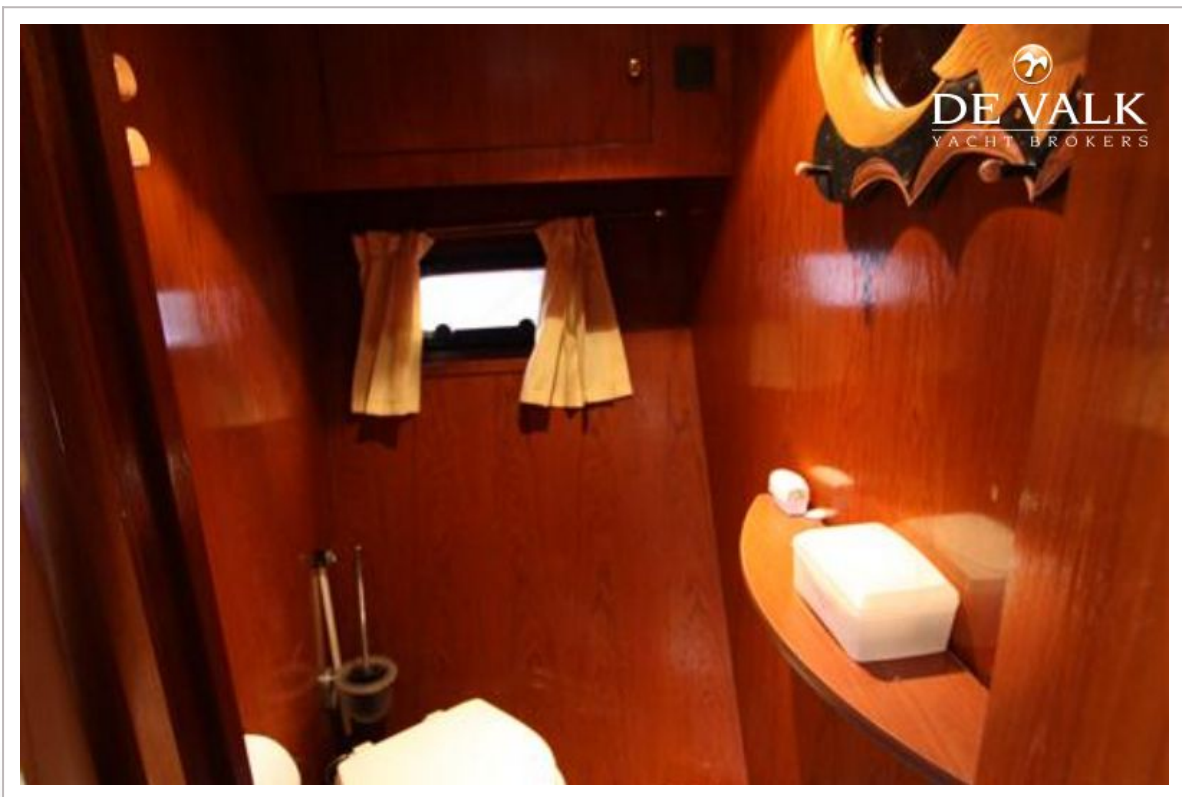


# VALK CHALLENGER ROYAL 45



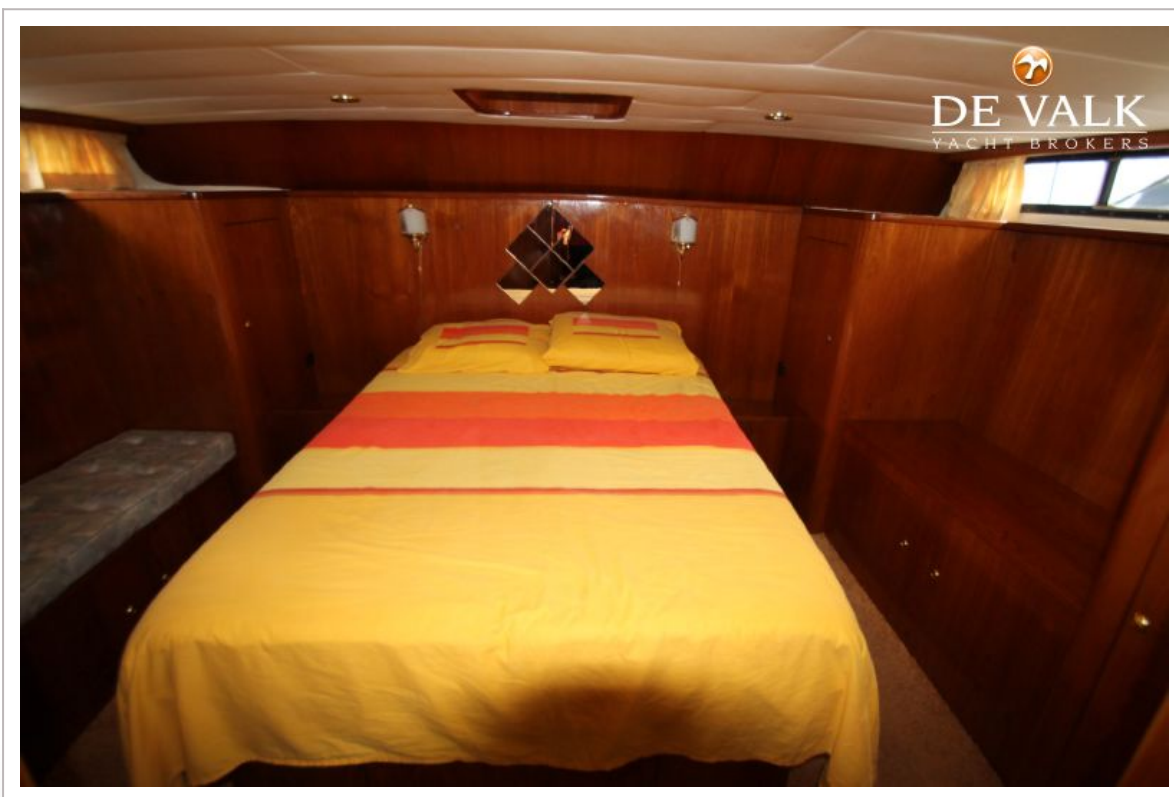


# VALK CHALLENGER ROYAL 45





# VALK CHALLENGER ROYAL 45

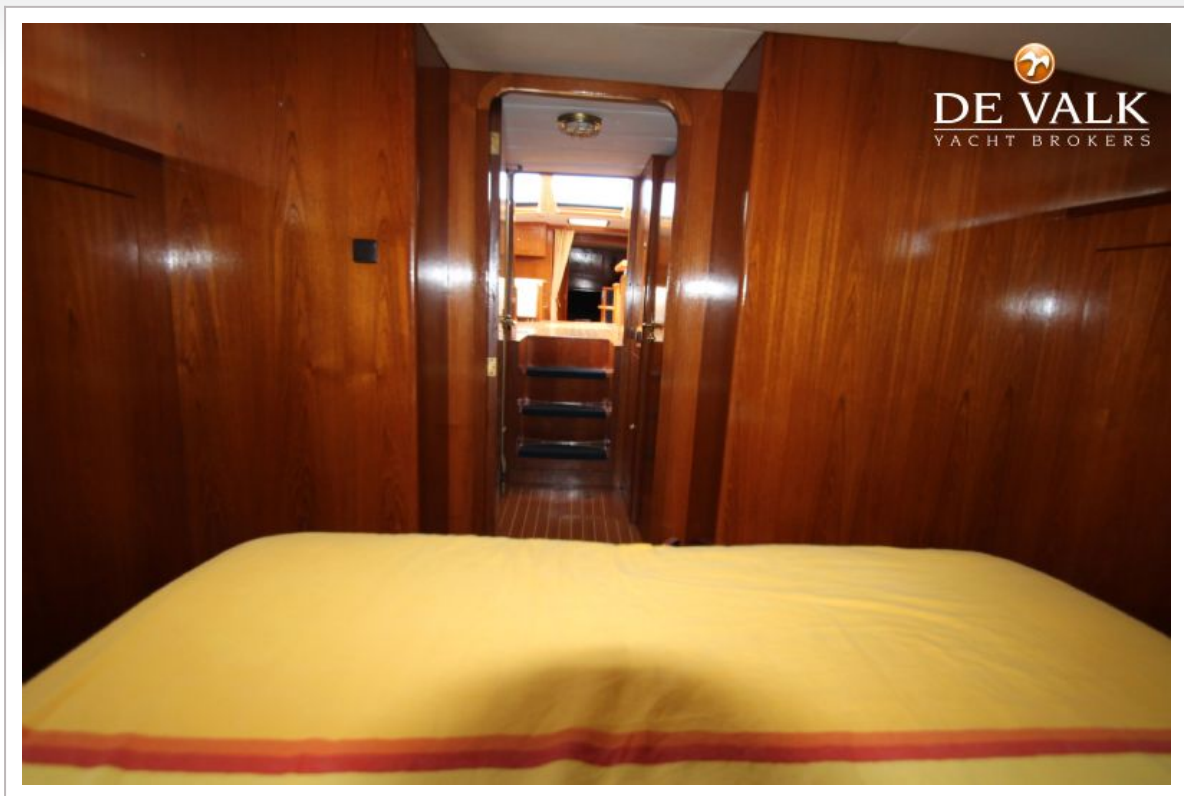


# VALK CHALLENGER ROYAL 45





# VALK CHALLENGER ROYAL 45



## VALK CHALLENGER ROYAL 45



# VALK CHALLENGER ROYAL 45

