



DE VALK
YACHT BROKERS



VALKKRUISER 1400



DE VALK
YACHT BROKERS

VALKKRUISER 1400

BROKER'S COMMENTS

"Allure" is a generous Valkkruiser, casco built by Gijs van der Valk and custom built by Jetten Yachting. Recently repainted, new pillows for settee in cockpit, new sprayhood and cockpitcover. With three spacious cabins and a dinette which is convertible into double berth, "Allure" is a real spacious miracle! You are very welcome to visit her in our covered sales harbor.

Arne Doodeman

SPECIFICATIONS

Dimensions	14.00 x 4.40 x 1.10 (m)	Builder	Gijs van der Valk / Jetten Yachting
Built	2004	Cabins	3
Material	Steel	Berths	8
Engine(s)	1 x Iveco 8061 M14 diesel	Hp/Kw	145.00 (hp), 106.58 (kw)
Asking price	sold (VAT)	Lying	at sales office

CONTACT

Sales office	De Valk Sneek	Telephone	+31 (0)515 42 80 30
Address	Zwolsmanweg 7 8606 KC Sneek NL	E-mail	sneek@devalk.nl

DISCLAIMER

These particulars are given in good faith as supplied but cannot be guaranteed.



VALKKRUISER 1400

GENERAL

Model	VALKKRUISER 1400
Type	motor yacht
LOA (m)	14,00
Beam (m)	4,40
Draft (m)	1,10
Year built	2004
Builder	Gijs van der Valk / Jetten Yachting
Country	The Netherlands
Displacement (t)	15
CE norm	C
Hull material	steel
Hull colour	grey
Hull shape	hard chine
Superstructure material	steel
Deck material	steel
Deck finish	anti-slip paint
Window frame	aluminum
Window material	double glazing
Radar arch	collapsible
Fuel tank (litre)	800
Freshwater tank (litre)	800
Blackwater tank (litre)	200
Wheel steering	hydraulic
More info on paintwork	completely repainted in 2012/2013

ACCOMMODATION

Cabins	3
Berths	8
Floor	carpet
Aft deck	yes



VALKKRUISER 1400

Saloon	yes
Heating	central heating Kabola
Dinette	yes
Dinette to convert into berth	yes
Galley	yes
Countertop	yes
Sink	stainless steel
Cooker	calor gas 4-burner
Extractor	yes
Microwave	Sharp
Fridge	with freezer compartment
Hot water system	yes
Water pressure system	yes
Owners cabin	double bed
Wardrobe	yes
Bathroom	yes
Toilet	shared
Toilet system	electric
Wash basin	in the bathroom
Shower	shared
Guest cabin 1	double bed
Wardrobe	yes
Toilet	shared
Toilet system	electric
Guest cabin 3	v-bed
Wardrobe	yes

MACHINERY

No of engines	1
Make	Iveco
Type	8061 M14



VALKKRUISER 1400

HP	145,00
kW	106,58
Fuel	diesel
Engine hours	3000 +/-
Engine cooling system	freshwater heat exchanger
Engine controls	manual
Gearbox	hydraulic
Bowthruster	electric
Sternthruster	electric
Thrust bearing	yes
Propeller type	fixed
Propeller shaft material	stainless steel
Shaft lubrication	water
Electric bilge pump	yes
Electrical installation	24/230
Batteries	yes
Battery monitor	yes
Battery charger	Mastervolt
Shorepower	with cable

NAVIGATION

Depth sounder	Raymarine ST60 tridata
Log	Raymarine ST60 tridata
Autopilot	Raymarine ST6001+
Plotter	Garmin GPS map 526

EQUIPMENT

Sprayhood	2013
Cockpit cover	new cockpit cover (2013)
Cockpit cushions	yes
Bathing platform	yes



VALKKRUISER 1400

Boarding ladder	stainless steel
Anchor	yes
Anchor chain	yes
Windlass	manual Lofrance
Sea railing	stainless steel
Grab rail (superstructure)	stainless steel
Wiper	3x
Horn	yes
Fenders	yes
Mooring lines	yes
TV	LG on lift
TV receiver	yes
Radio-cd player	Pioneer
Fire extinguisher	yes



VALKKRUISER 1400



VALKKRUISER 1400



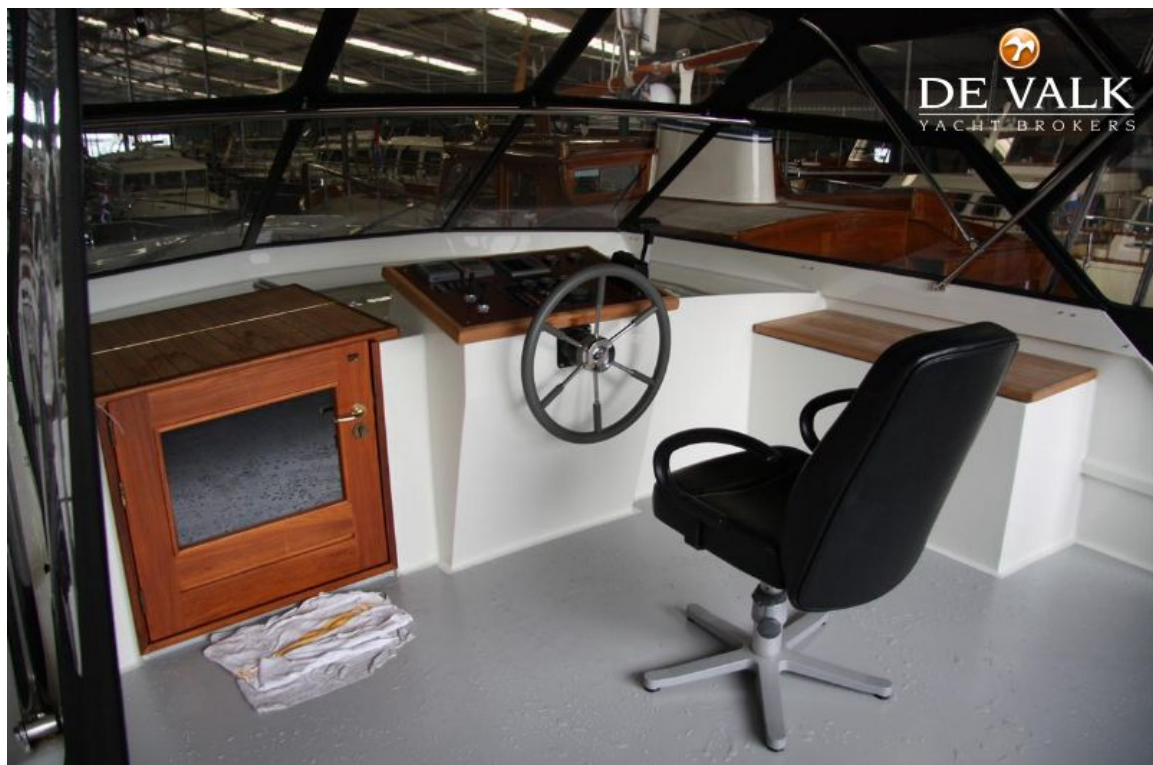
VALKKRUISER 1400



VALKKRUISER 1400



VALKKRUISER 1400



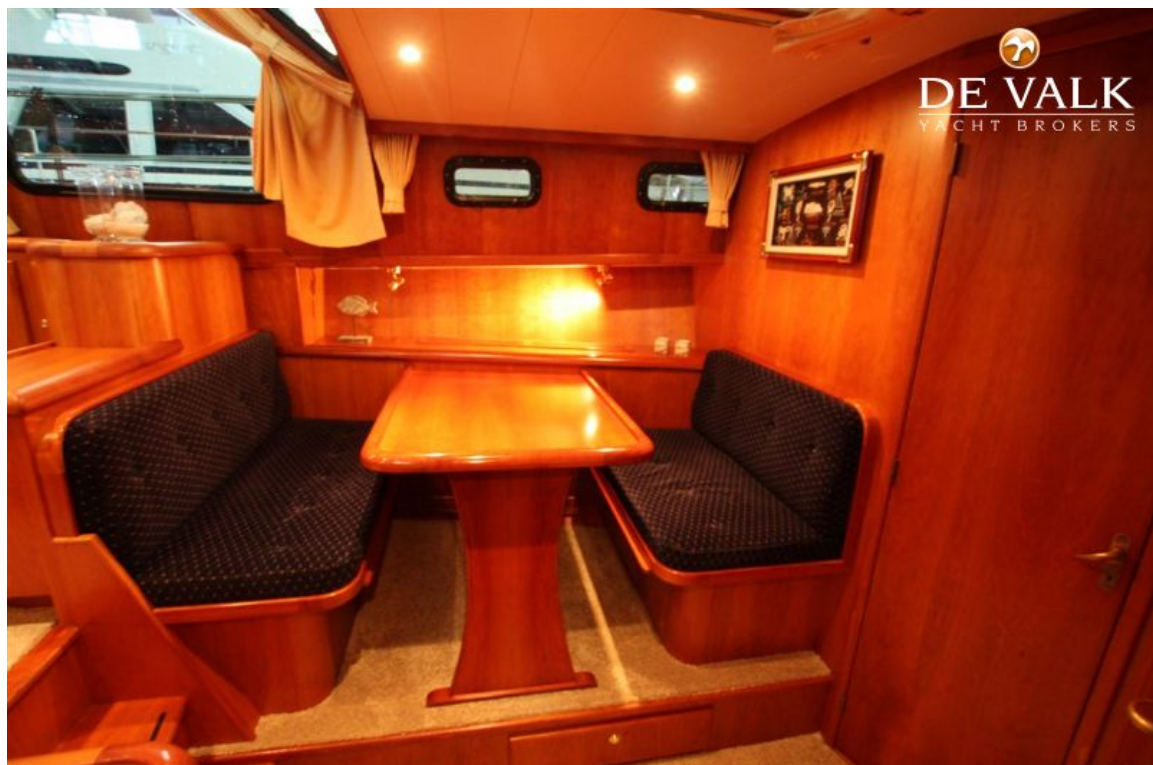
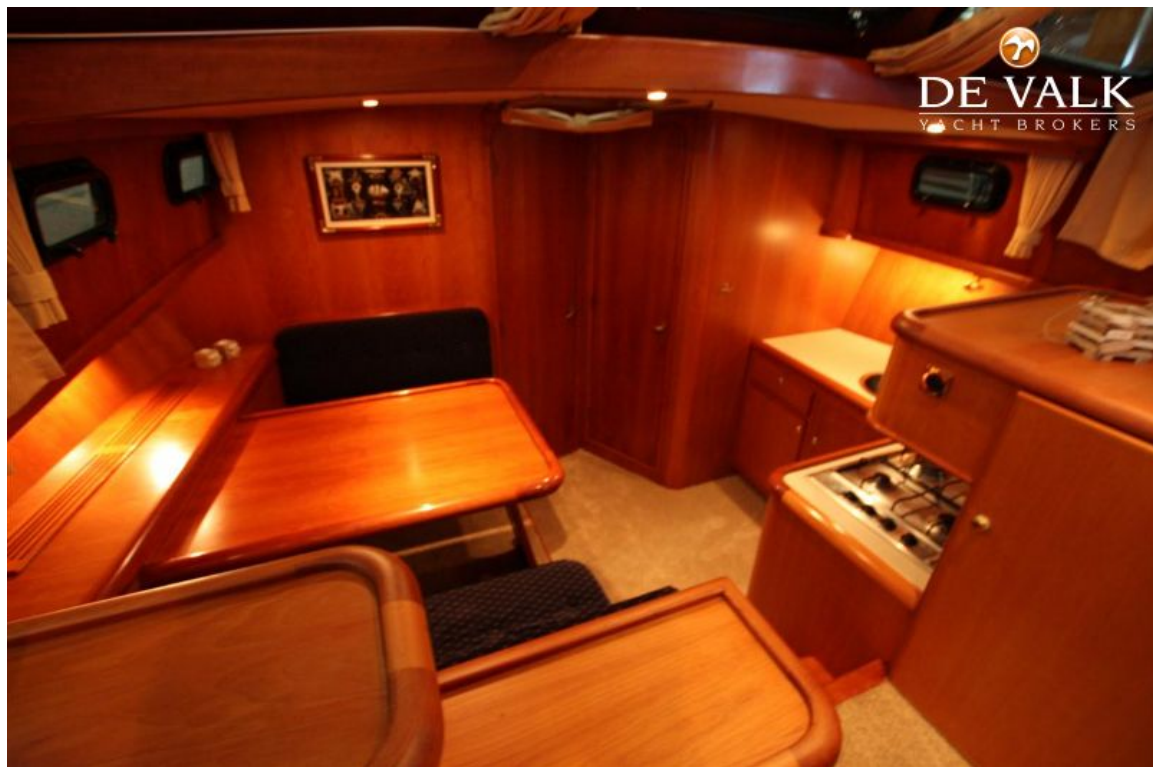
VALKKRUISER 1400



VALKKRUISER 1400



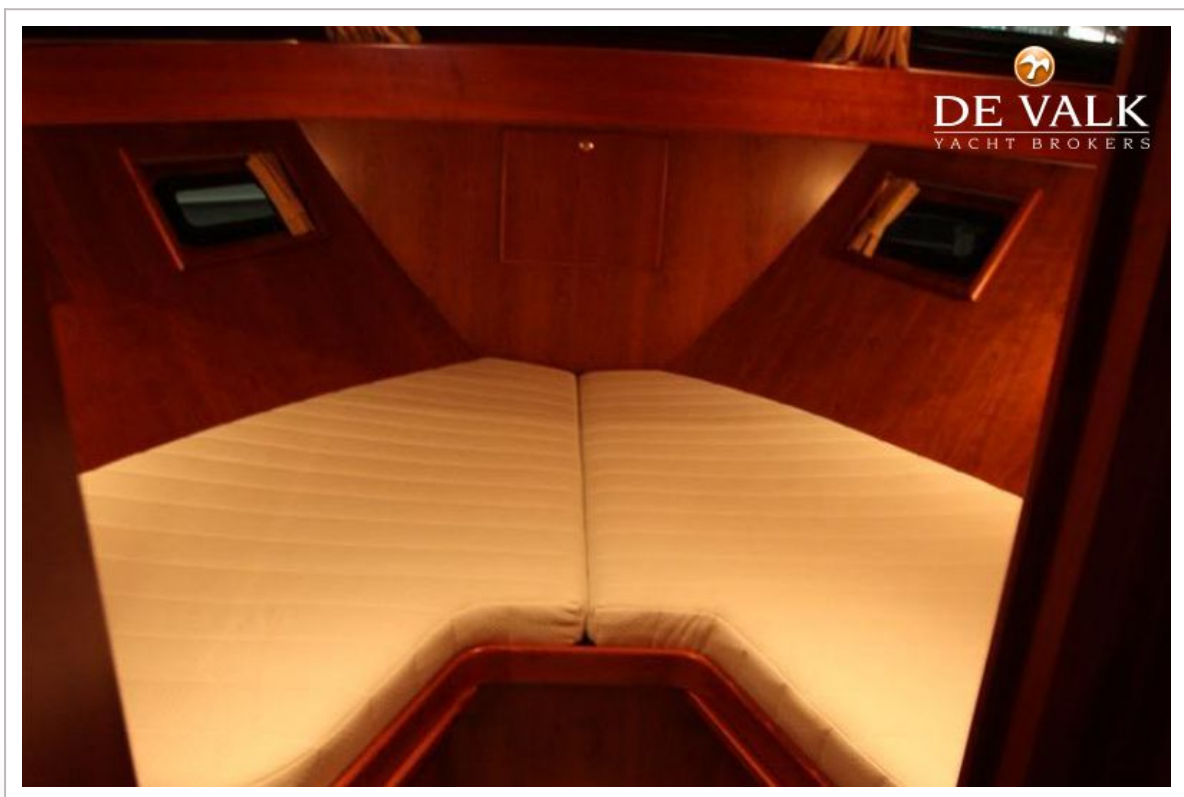
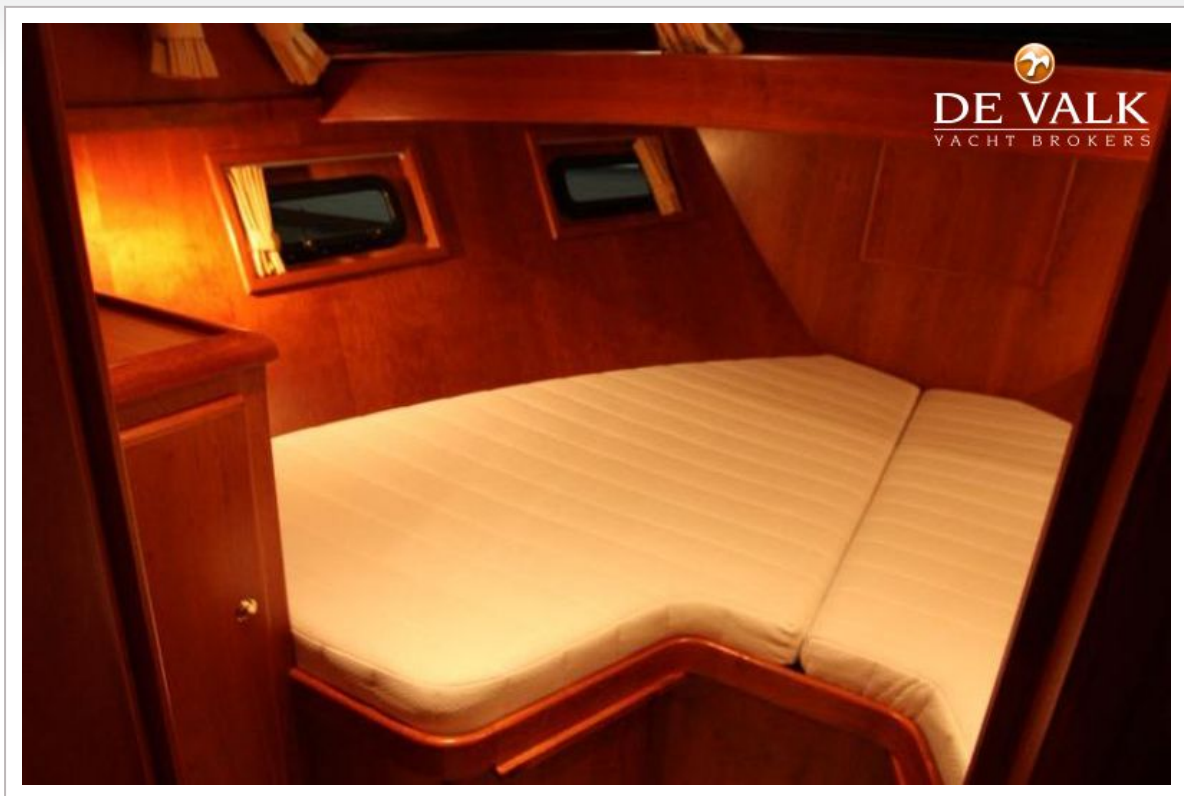
VALKKRUISER 1400



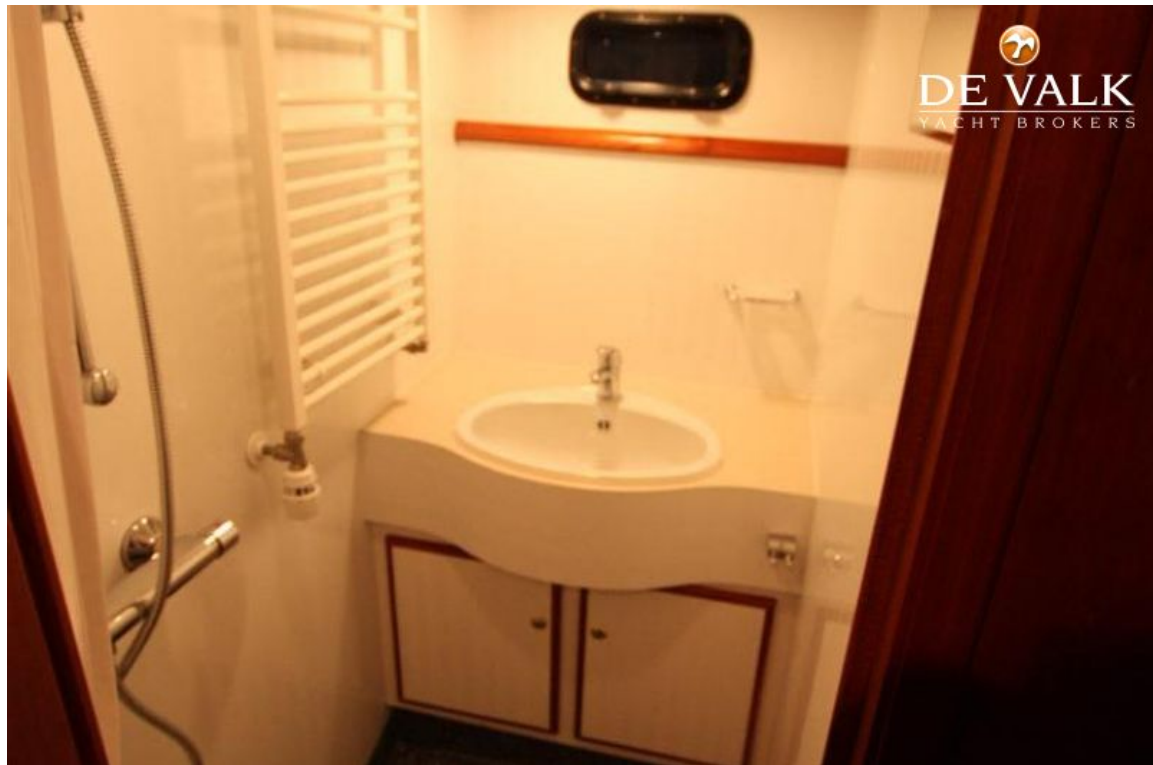
VALKKRUISER 1400



VALKKRUISER 1400



VALKKRUISER 1400



VALKKRUISER 1400

