



CARLINE 1100

BROKER'S COMMENTS

Carline 1100 "Iris" is offered for sale by her first and only owner who explored the European channels with her. Equipped with i.a. two cabin lay-out and possibility to convert the dinette to an extra double berth, a 135 hp Perkins diesel engine, electric bow- and stern thruster and a Mastervolt Whisper generator. You are very welcome to visit "Iris" in our sales harbor in Sneek.

Arne Doodeman

SPECIFICATIONS

| | | | |
|---------------------|-------------------------|----------------|-------------------------|
| Dimensions | 11.60 x 3.95 x 1.00 (m) | Builder | Bijko Harlingen |
| Built | 2000 | Cabins | 2 |
| Material | Steel | Berths | 4 |
| Engine(s) | 1 x Perkins diesel | Hp/Kw | 135.00 (hp), 99.22 (kw) |
| Asking price | sold (VAT) | Lying | at sales office |

CONTACT

| | | | |
|---------------------|--------------------------------------|------------------|---------------------|
| Sales office | De Valk Sneek | Telephone | +31 (0)515 42 80 30 |
| Address | Zwolsmanweg 7 8606 KC Sneek NL | E-mail | sneek@devalk.nl |

DISCLAIMER

These particulars are given in good faith as supplied but cannot be guaranteed.



GENERAL

| | |
|-------------------------|-----------------------------|
| Model | CARLINE 1100 |
| Type | motor yacht |
| LOA (m) | 11,60 |
| LWL (m) | 10,48 |
| Beam (m) | 3,95 |
| Draft (m) | 1,00 |
| Air draft (m) | 2,90 |
| Year built | 2000 |
| Builder | Bijko Harlingen |
| Country | The Netherlands |
| Designer | Topline yacht design |
| Displacement (t) | 11 |
| CE norm | C |
| Hull material | steel |
| Hull colour | blue |
| Hull shape | hard chine |
| Superstructure material | steel |
| Deck material | steel |
| Deck finish | teak |
| Window frame | aluminium |
| Window material | glass |
| Radar arch | collapsible Stainless steel |
| Fuel tank (litre) | 800 |
| Freshwater tank (litre) | 400 |
| Blackwater tank (litre) | 200 |
| Wheel steering | hydraulic |
| Inside helm position | yes |
| Outside helm position | yes |

ACCOMMODATION



CARLINE 1100

| | |
|-------------------------------|-------------------------------|
| Cabins | 2 |
| Berths | 4 |
| Interior | mahogany |
| Floor | yes |
| Aft deck | yes |
| Saloon | yes |
| Heating | diesel ducted hot air Webasto |
| Dinette | yes |
| Dinette to convert into berth | yes |
| Galley | yes |
| Countertop | yes |
| Sink | yes |
| Cooker | calor gas 4-burner |
| Oven | Eno |
| Fridge | yes |
| Hot water system | 220V + engine |
| Water pressure system | yes |
| Owners cabin | french bed |
| Wardrobe | yes |
| Toilet | shared |
| Toilet system | electric |
| Wash basin | at the toilet |
| Shower | en suite |
| Guest cabin 1 | v-bed |
| Wardrobe | yes |
| Washing machine | Candy |

MACHINERY

| | |
|---------------|---------|
| No of engines | 1 |
| Make | Perkins |
| HP | 135,00 |



| | |
|---------------------------------|------------------------------|
| kW | 99,22 |
| Fuel | diesel |
| Cruising speed (kn) | 9 |
| Engine hours | 1580 |
| Engine cooling system | seawater 2 filters |
| Engine controls | manual |
| Gearbox | hydraulic ZF |
| Bowthruster | electric Max power |
| Sternthruster | electric Max power |
| Thrust bearing | Aquadrive |
| Propeller type | fixed |
| Propeller shaft material | stainless steel |
| Shaft lubrication | water |
| Electric bilge pump | yes |
| Generator | Mastervolt Whisper 3,5 |
| Batteries | yes |
| Battery charger | Mastervolt Mass 24/75 |
| Inverter | Mastervolt Mass sine 24/1500 |
| Shorepower | with cable |

NAVIGATION

| | |
|-------------------------------|-------------------------------------|
| Depth sounder | Raytheon ST60 tridata |
| Log | Raytheon ST60 tridata |
| VHF | yes |
| Autopilot | with remote control Raytheon ST600+ |
| Rudder angle indicator | Raytheon ST60 |
| Plotter | Raytheon RC620 |

EQUIPMENT

| | |
|------------------|-----|
| Sprayhood | yes |
| Bimini | yes |



| | |
|-------------------|---|
| Bathing platform | yes |
| Boarding ladder | yes |
| Deck shower | yes |
| Anchor | yes |
| Anchor chain | yes |
| Windlass | electrical Muir |
| Davits | stainless steel Simpson (pliable) |
| Sea railing | stainless steel |
| Wiper | yes |
| Horn | yes |
| Fenders | yes |
| Mooring lines | yes |
| TV | LCD |
| Radio-cd player | Pioneer Radio/CD |
| Clock - barometer | Clock + Bao |
| Fire extinguisher | yes |
| Extra info | - Muir anchor winch with remote control on outside steering - 2x white Todd bench with room for storage, containing mooring pins and hammer |



CARLINE 1100



CARLINE 1100



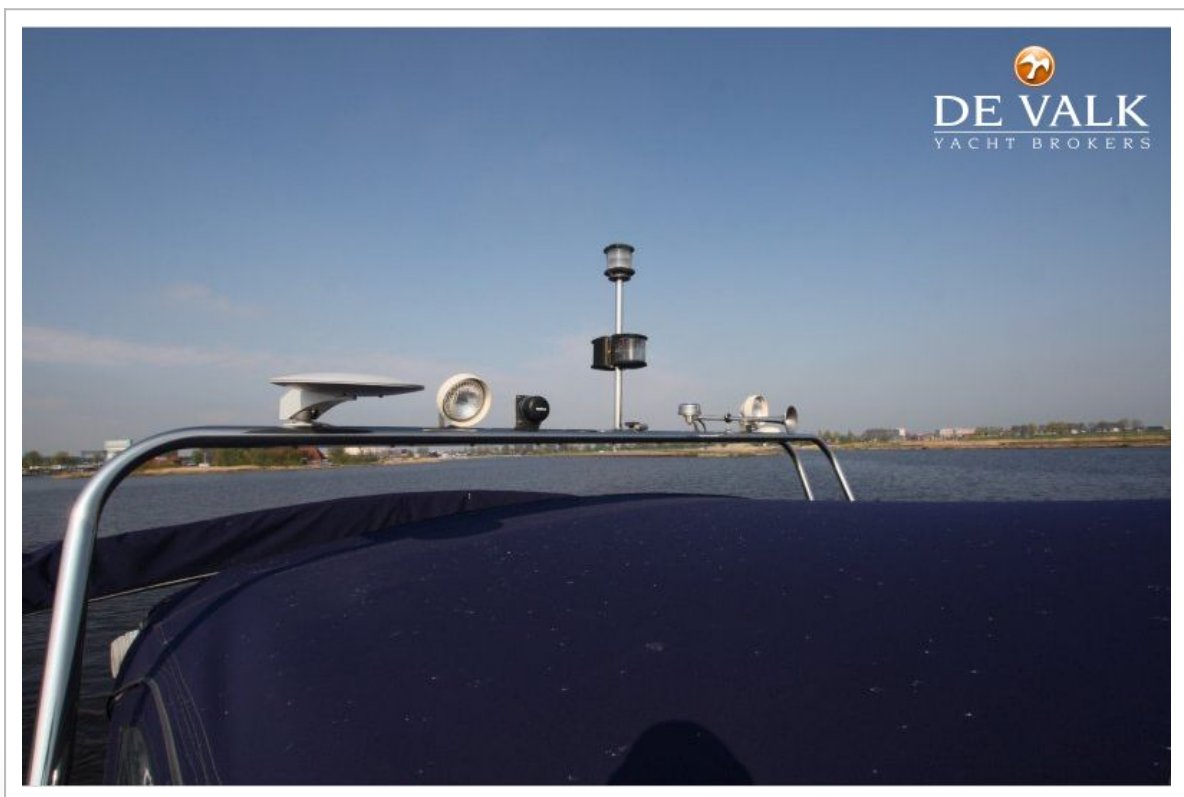
CARLINE 1100



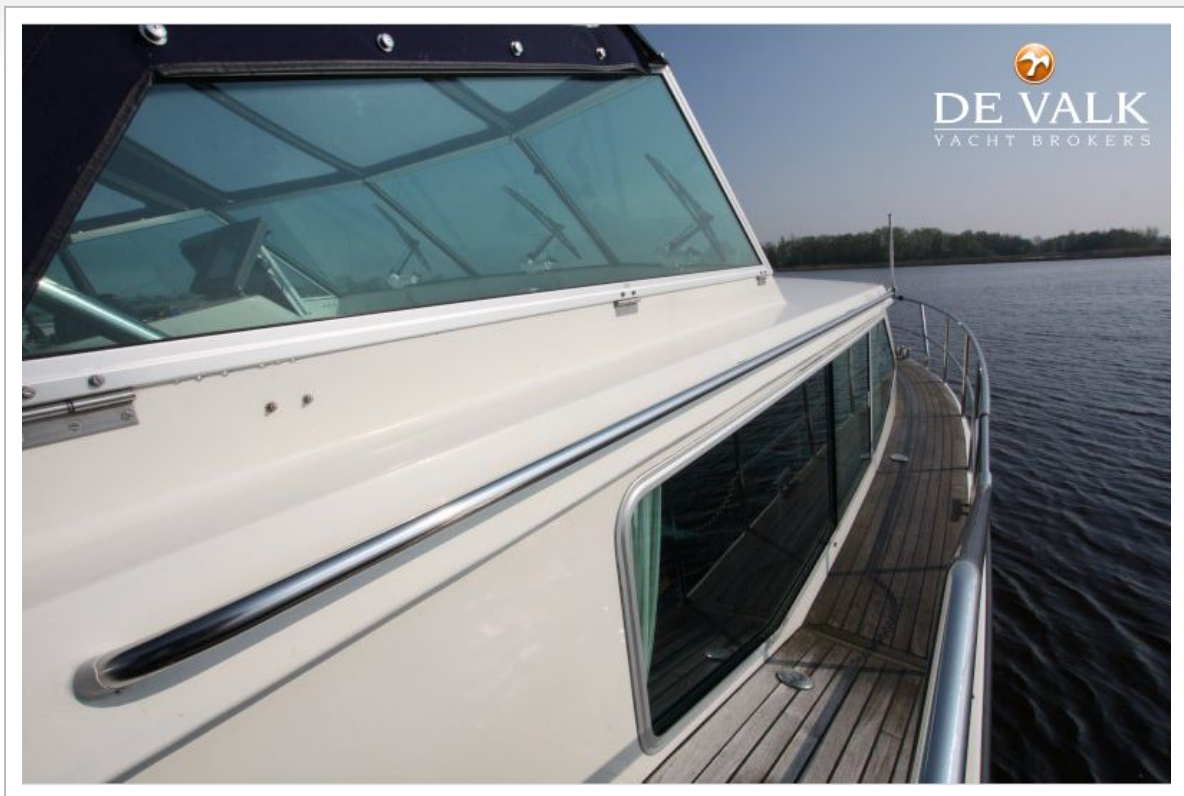
CARLINE 1100



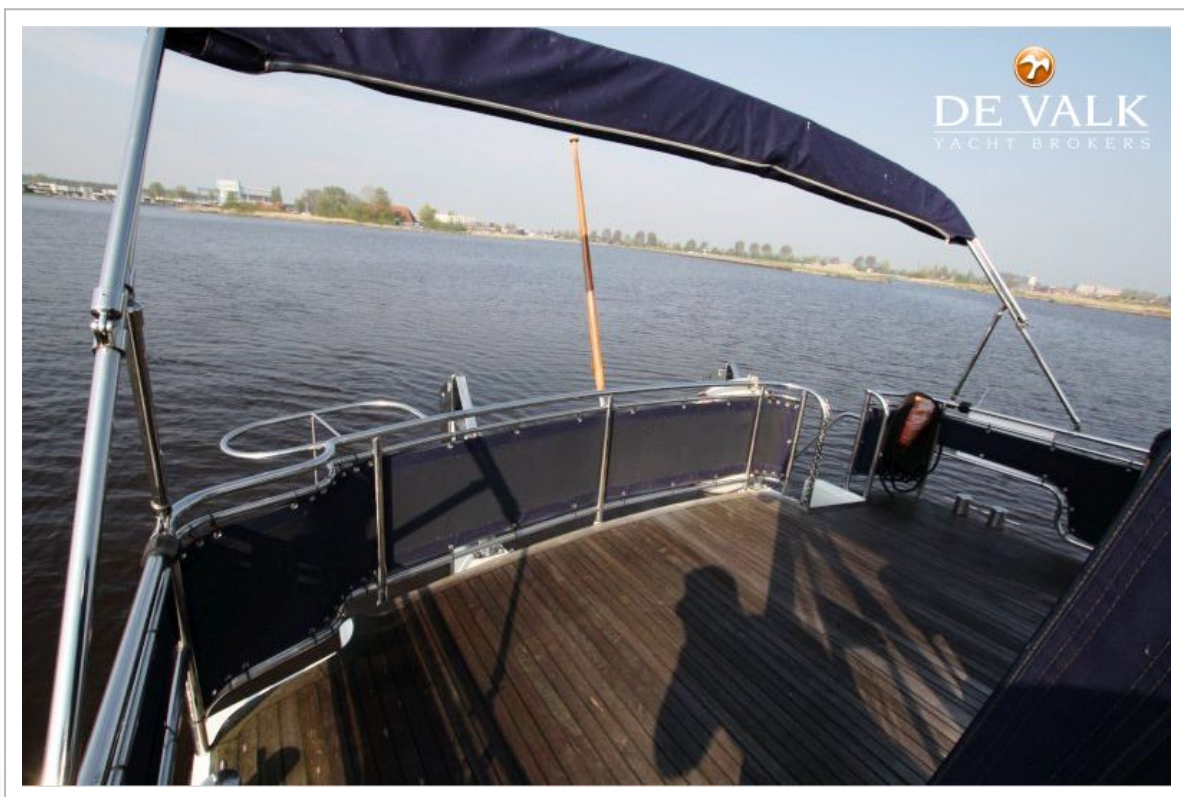
CARLINE 1100



CARLINE 1100



CARLINE 1100



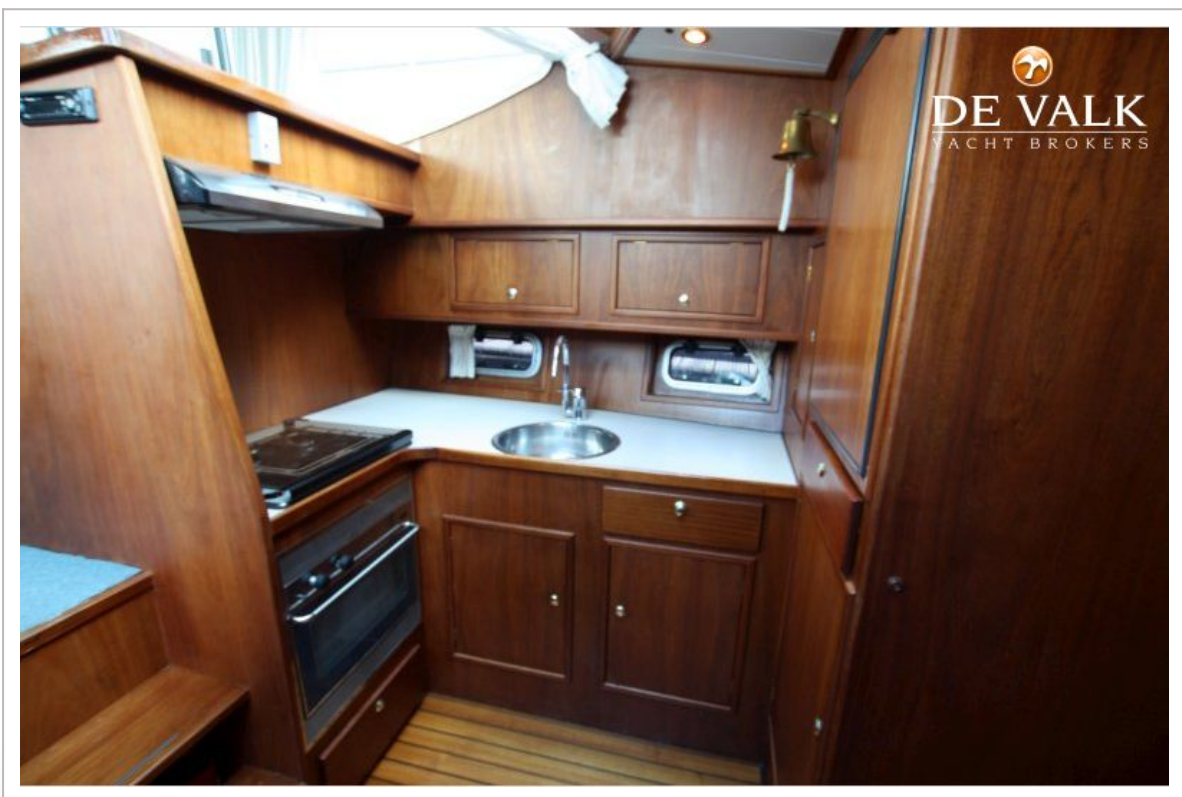
CARLINE 1100



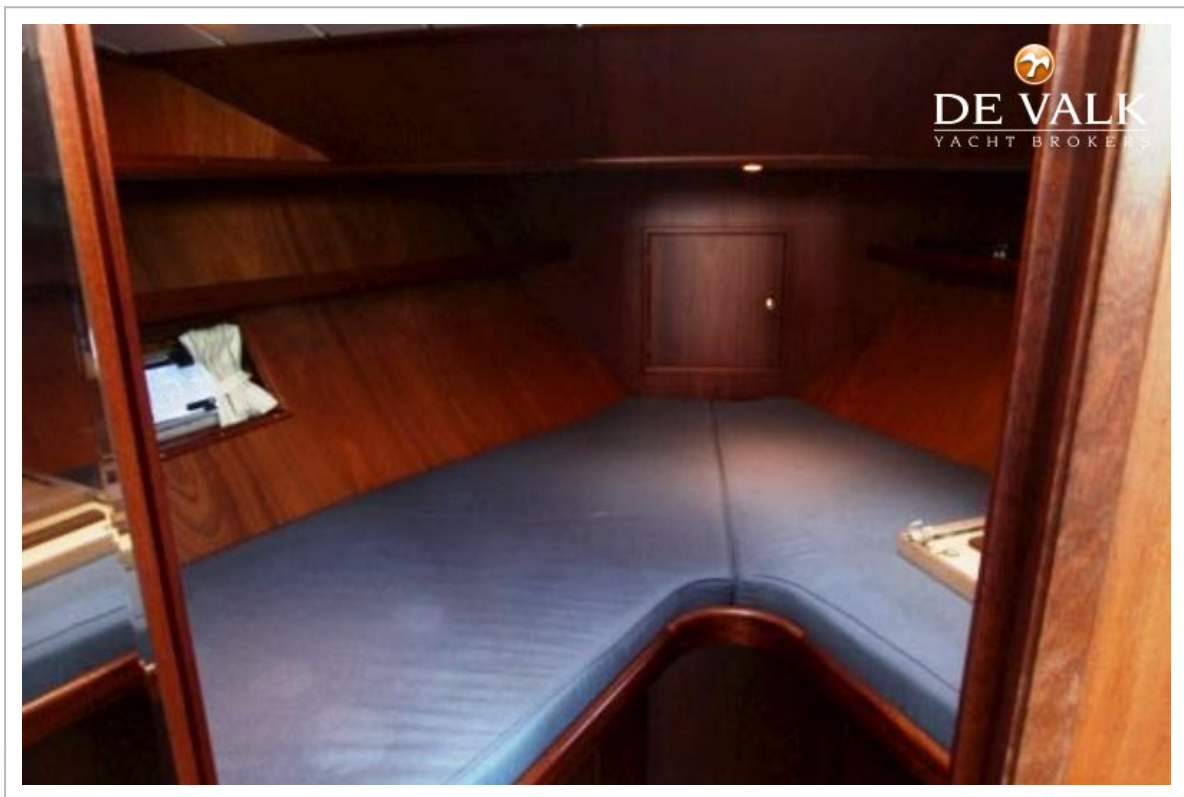
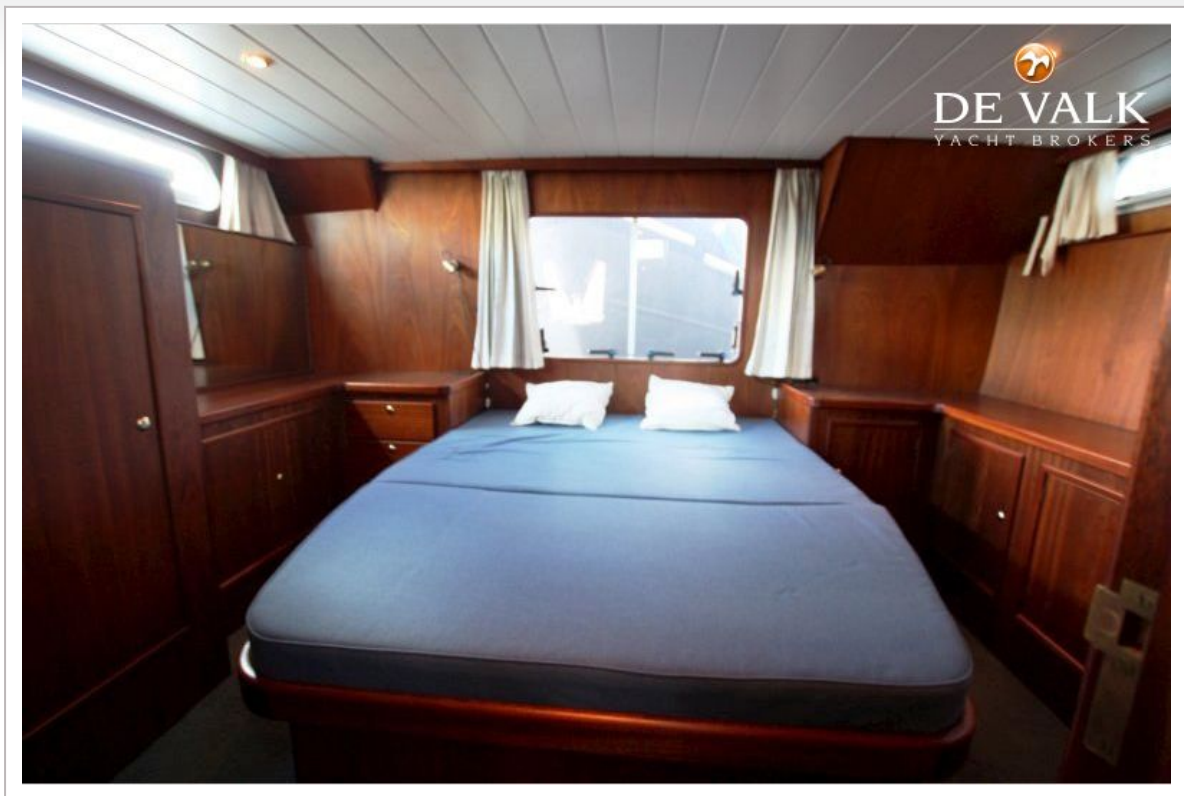
CARLINE 1100

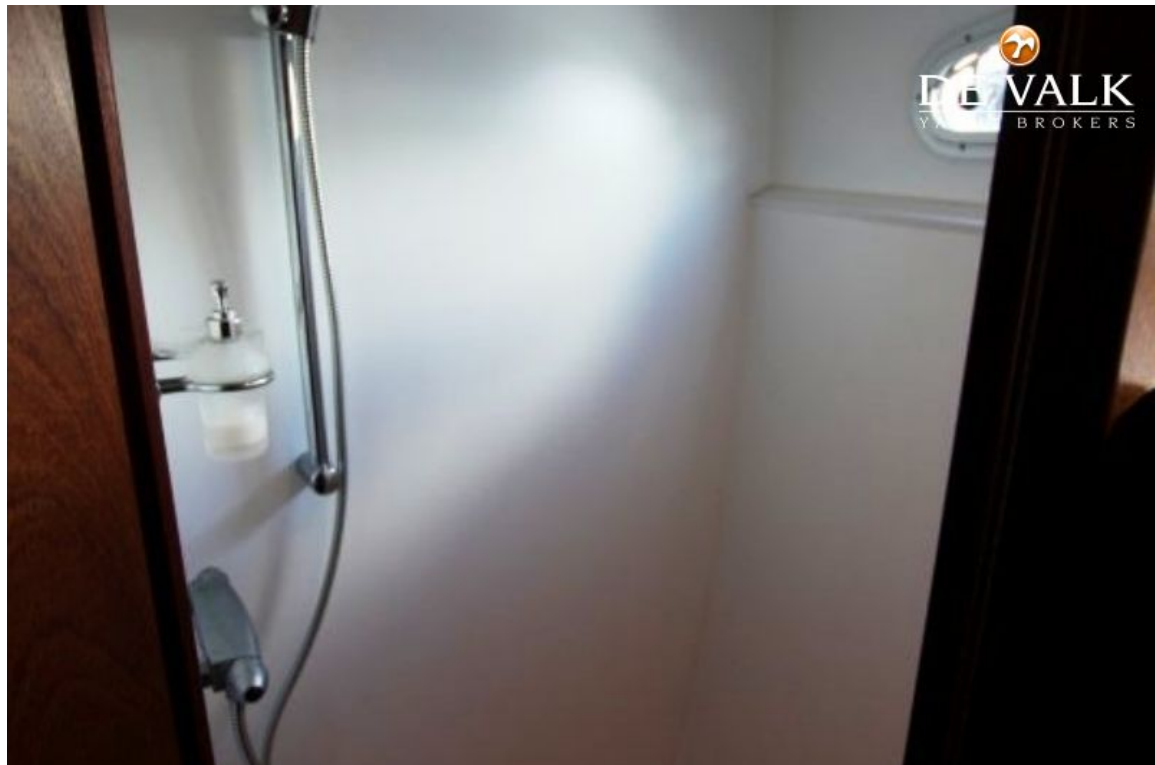


CARLINE 1100



CARLINE 1100





CARLINE 1100

