



DE VALK  
YACHT BROKERS



STENTOR 1600



DE VALK  
YACHT BROKERS

BROKERAGE | CHARTER | BERTHS | FINANCE | INSURANCE | YACHT MANAGEMENT

# STENTOR 1600

## BROKER'S COMMENTS

Stentor 16 "Island of Sentosa" is a long range steel motoryacht and very suitable for a lot of sailing areas due to her low airdraft of 3,40 meter: you can sail her through the French canals and other inland waterways and also at open seas. This Stentor has a range of ca. 3000 n.m. and "Island of Sentosa" is equipped with i.a. hydraulic bow- and sternthruster, central heating and airconditioning. The hull, superstructure and underwater hull are repainted in 2014. Viewing is possible on appointment.

*Arne Doodeman*

## SPECIFICATIONS

<b>Dimensions</b>	16.00 x 4.60 x 1.35 (m)	<b>Builder</b>	Stentor Yachts
<b>Built</b>	2000	<b>Cabins</b>	2
<b>Material</b>	Steel	<b>Berths</b>	5
<b>Engine(s)</b>	1 x Perkins M185C/21 diesel	<b>Hp/Kw</b>	185.00 (hp), 135.98 (kw)
<b>Asking price</b>	sold (VAT )	<b>Lying</b>	elsewhere / Not at sales office

## CONTACT

<b>Sales office</b>	De Valk Sneek	<b>Telephone</b>	+31 (0)515 42 80 30
<b>Address</b>	Zwolsmanweg 7 8606 KC Sneek NL	<b>E-mail</b>	sneek@devalk.nl

## DISCLAIMER

These particulars are given in good faith as supplied but cannot be guaranteed.



# STENTOR 1600

## GENERAL

Model	STENTOR 1600
Type	motor yacht
LOA (m)	16,00
Beam (m)	4,60
Draft (m)	1,35
Year built	2000
Builder	Stentor Yachts
Country	The Netherlands
Designer	Vripack
CE norm	A
Hull material	steel
Hull colour	blue (2014)
Hull shape	multi hard chine
Superstructure material	steel
Rubbing strake	stainless steel
Deck material	steel
Deck finish	anti-slip moulded in Aluminum
Antifouling (year)	2014
Window frame	aluminium
Window material	double glazing
Flybridge	yes
Flybridge cover	yes
Mast can be lowered	manual
Fuel tank (litre)	3000
Fuel tank 2 (litre)	3000
Freshwater tank (litre)	3000
Blackwater tank (litre)	200
Greywater tank (litre)	200
Wheel steering	hydraulic
Inside helm position	yes



Outside helm position

hydraulic

More info on paintwork

hull superstructure resprayed in 2014

## ACCOMMODATION

Cabins

2

Berths

5

Interior

teak

Floor

teak and holly

Aft deck

yes

Heating

central heating Kabola B12 tap

Air-conditioning

yes

Dinette

yes

Dinette to convert into berth

yes

Opening door to aft deck

yes

Galley

yes

Countertop

corian

Sink

stainless steel

Cooker

electric 4-burner

Extractor

yes

Microwave

Bosch Gourmet combi

Fridge

Candy

Freezer

Candy

Hot water system

on central heating

Water pressure system

electrical

Dishwasher

Bosch

Owners cabin

French bed

Wardrobe

hanging/drawers/shelves

Bathroom

en suite

Toilet

en suite

Toilet system

electric

Wash basin

at the toilet



# STENTOR 1600

Shower	en suite
Guest cabin 1	single bed 3x
Wardrobe	hanging and drawers
Bathroom	shared
Toilet	shared
Toilet system	electric
Wash basin	in the bathroom
Shower	shared
Washing machine	yes

## MACHINERY

No of engines	1
Make	Perkins
Type	M185C/21
HP	185
kW	135,98
Fuel	diesel
Maximum speed (kn)	9,3 (max.)
Cruising speed (kn)	8
Consumption (l/hr)	15
Range (nm)	3000
Engine hours	Ca. 4183
Engine cooling system	freshwater heat exchanger
Drive	shaft
Engine controls	electrical Micro command
Gearbox	hydraulic Twin disk MG5050
Bowthruster	hydraulic With remote control
Sternthruster	hydraulic With remote control
Thrust bearing	yes
Propeller type	fixed
Propeller blades	4-bladed



# STENTOR 1600

Propeller shaft material	stainless steel
Shaft lubrication	water
Electric bilge pump	yes
Electrical installation	yes
Generator	Lister-Petter 15 Kva
Start battery	yes
Service battery	6x 210 Ah
Generator battery	yes
Battery monitor	Victron
Battery charger	Mastervolt chargemaster 24/60/3
Inverter	Mastervolt Dakar sine 24/3000
Shorepower	with cable
Stabilizers	fin Koopnautic

## NAVIGATION

Depth sounder	Simrad IS15
Log	Simrad IS15
Windset	Simrad IS15
VHF	Shipmate RS8400, Shipmate RS8400 DSC controller
Autopilot	Robertson AP20
Radar/plotter	Simrad CR50
Navtex	Nasa Target pro-plus
Searchlight	yes

## EQUIPMENT

Sprayhood	yes
Cockpit table	yes
Bathing platform	yes
Boarding ladder	stainless steel
Gangway	yes
Anchor	Stainless steel



# STENTOR 1600

Anchor chain	stainless steel 80 m
Windlass	hydraulic Vetus
Windlass aft	Maxwell 3500
Deck wash	yes
Davits	stainless steel
Deck crane	electric Hydraulic/
Sea railing	stainless steel
Life raft	container Avon 6 pers.
Danbuoy	yes
Wiper	yes
Horn	yes
Fenders	yes
Mooring lines	yes
TV	Samsung LCD
Radio-cd player	Pioneer
Clock - barometer	clock/baro/hygro Clock/baro/hygro



# STENTOR 1600





# STENTOR 1600



# STENTOR 1600



# STENTOR 1600





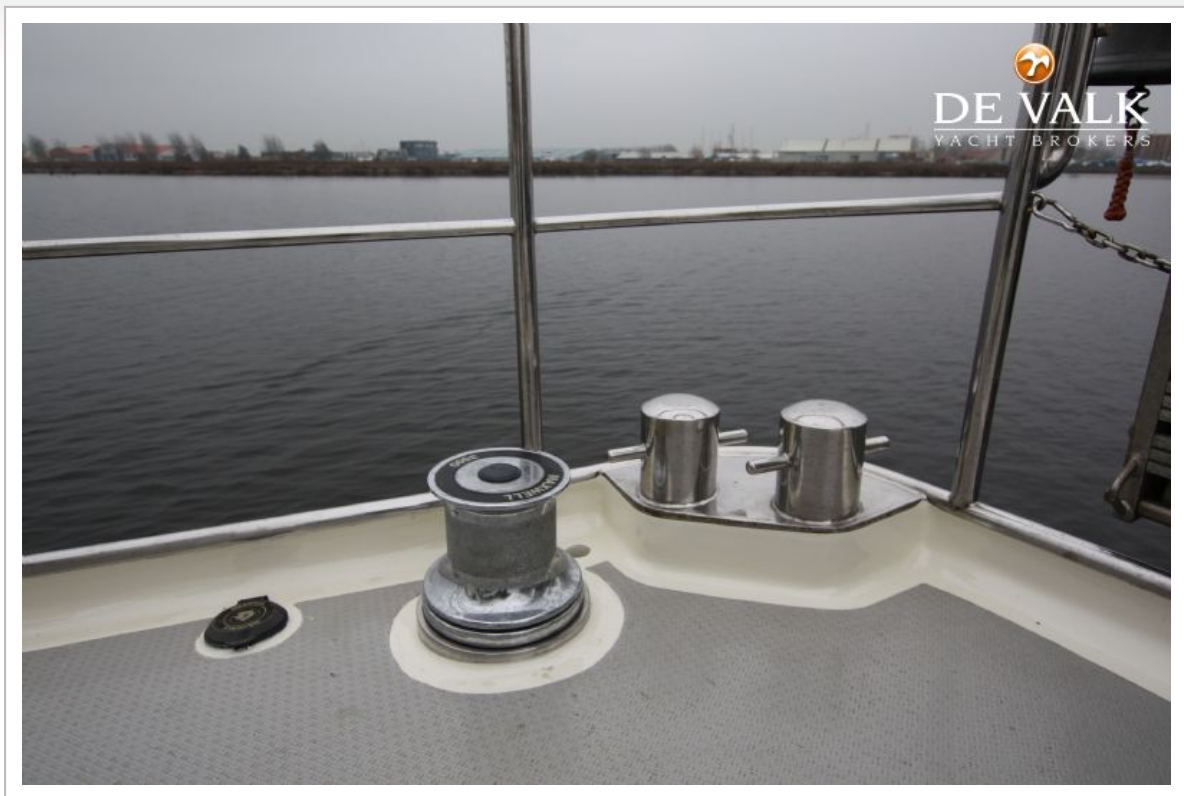
# STENTOR 1600



# STENTOR 1600



# STENTOR 1600





# STENTOR 1600

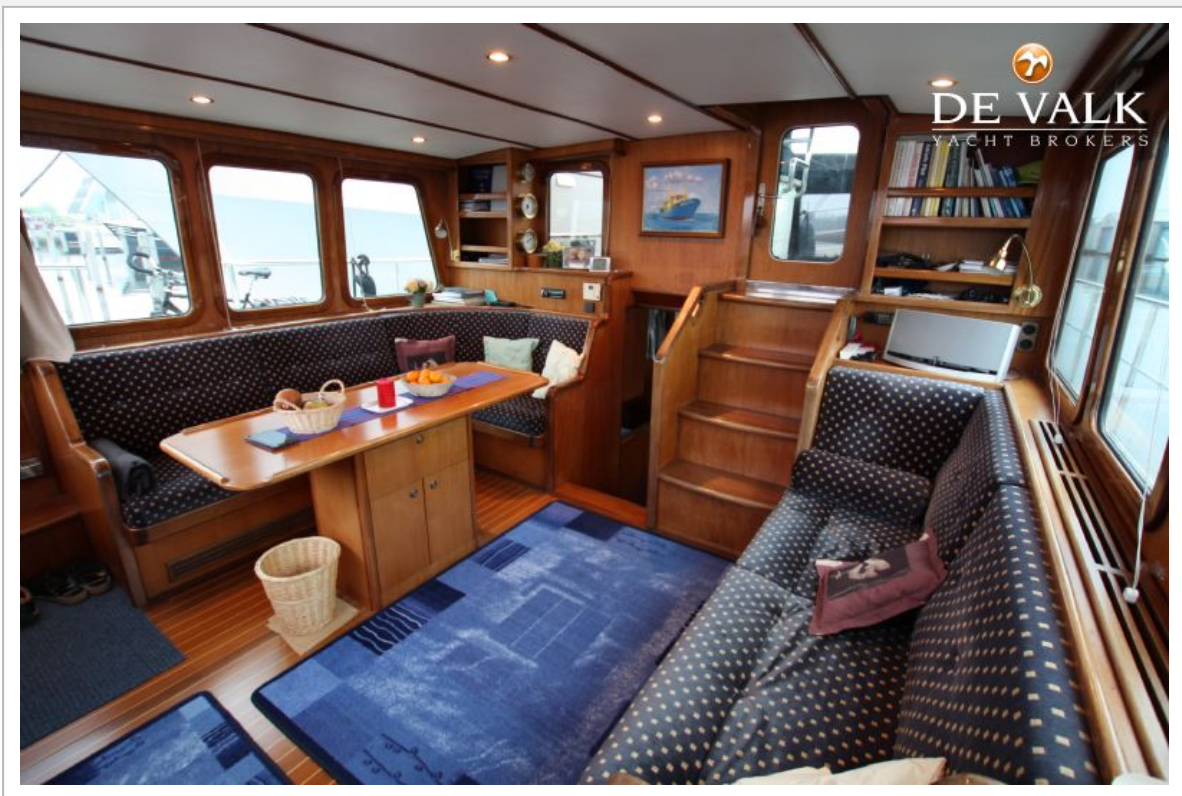


# STENTOR 1600





# STENTOR 1600



# STENTOR 1600

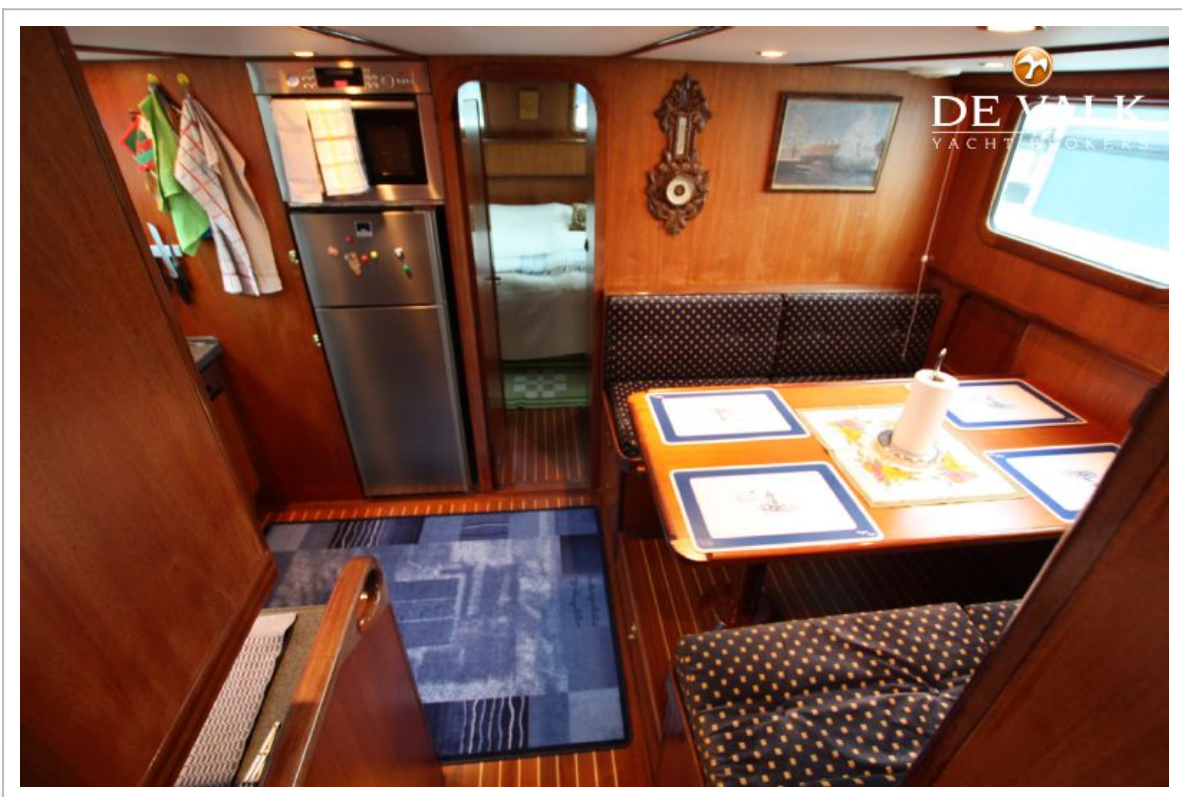
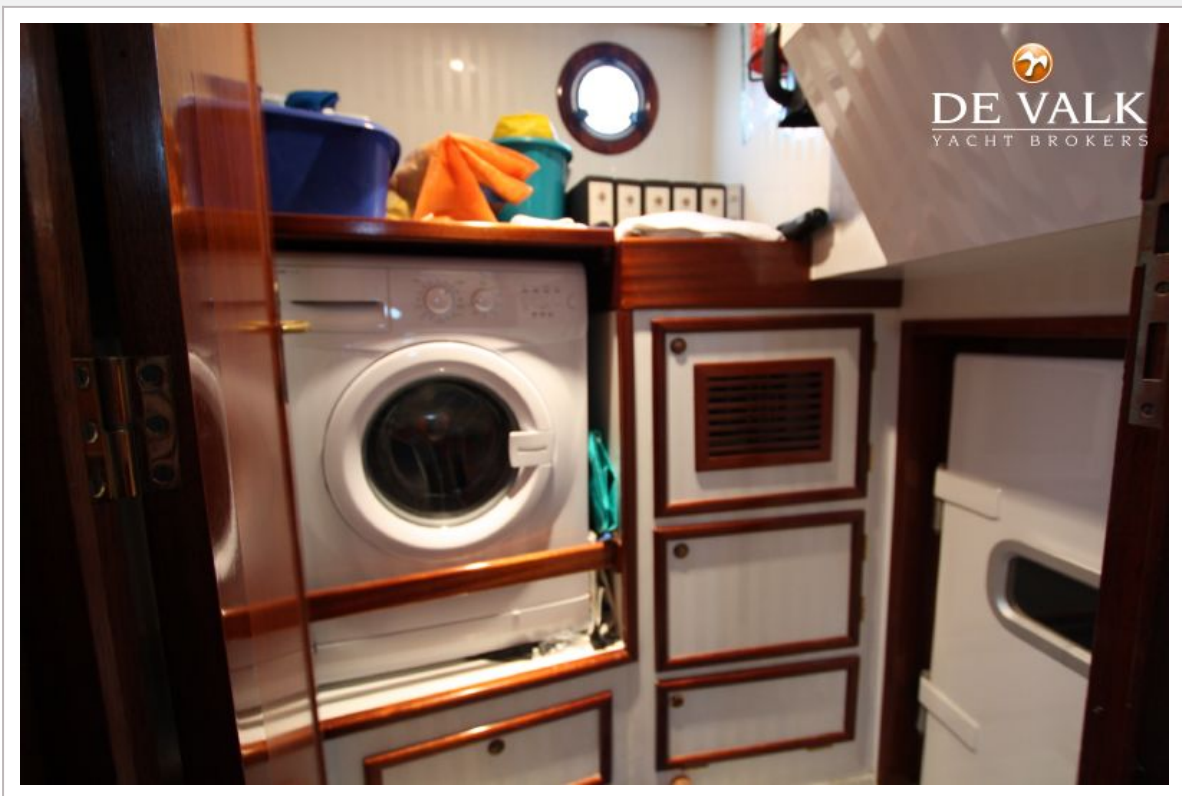




# STENTOR 1600



# STENTOR 1600

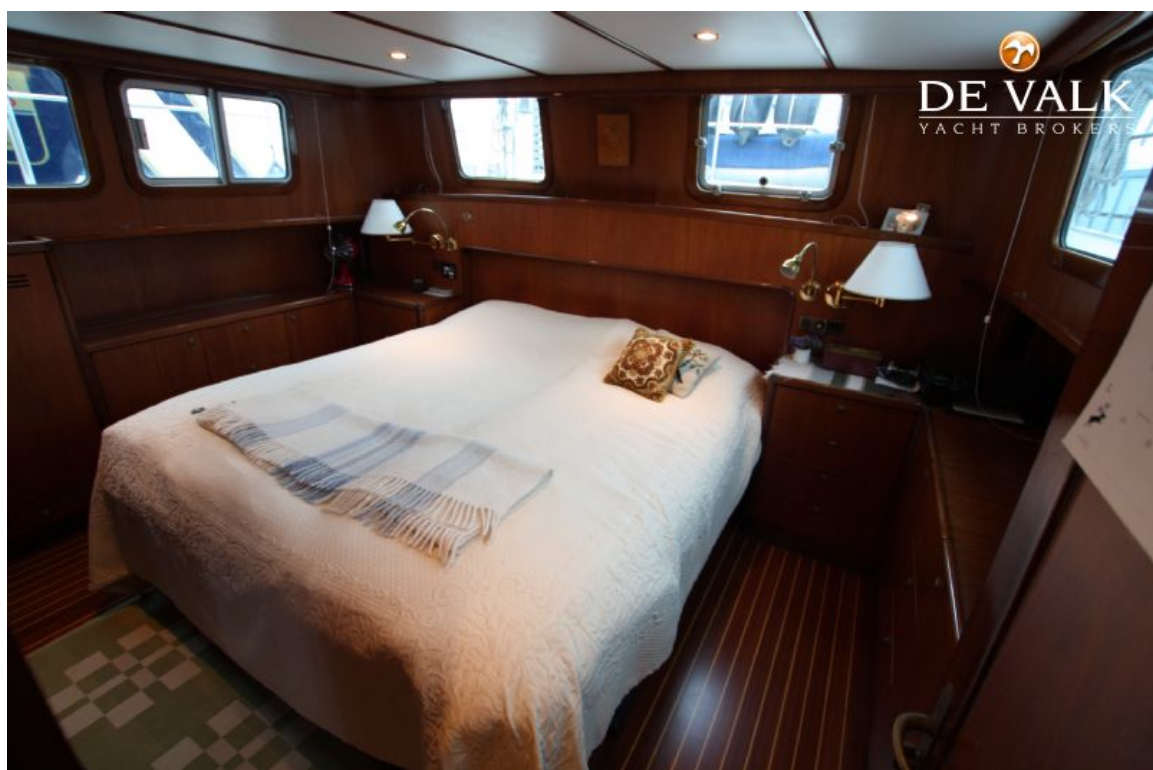




# STENTOR 1600

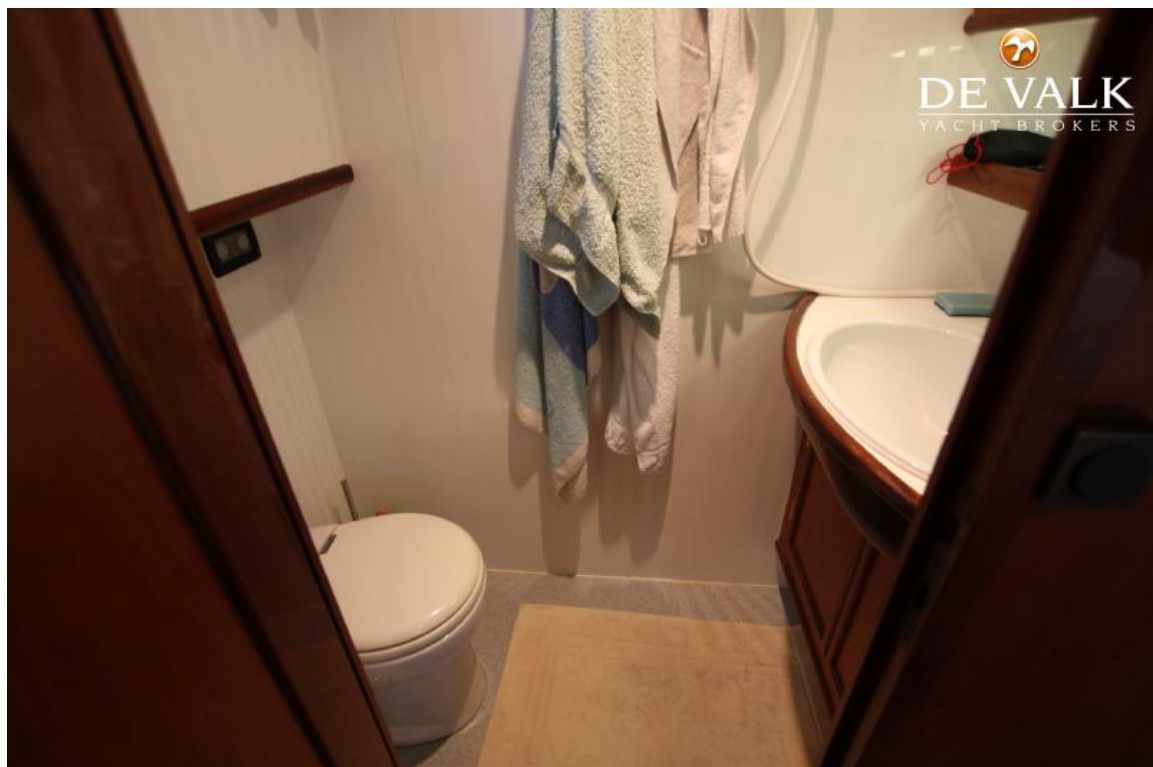


# STENTOR 1600





# STENTOR 1600



# STENTOR 1600





# STENTOR 1600

