



DE VALK  
YACHT BROKERS



DOGGERSBANK 1600



DE VALK  
YACHT BROKERS

## BROKER'S COMMENTS

Steel well built motoryacht Doggersbank 1600 "Lotte-Liese". This seaworthy motoryacht is built in 1994 by Doggersbank Jachtbouw B.V. in Woudsend - The Netherlands. Designed by Vripack Naval Architects under Lloyds classification. This seaworthy motoryacht is equipped with 3 cabins/6 berths. Large nicely finished teak interior and spacious aft deck. Many options such as hydraulic bowthruster, anchor winch, stabilizers, Kabola Central heating, double glazing and many many more. Very suitable to live on board or to explore all the European waterways.

*Peter van Diggele*

## SPECIFICATIONS

<b>Dimensions</b>	16.00 x 4.70 x 1.55 (m)	<b>Builder</b>	Doggersbank Jachtbouw B.V. - Woudsend/NL
<b>Built</b>	1994	<b>Cabins</b>	3
<b>Material</b>	Steel	<b>Berths</b>	6
<b>Engine(s)</b>	1 x MTU V12 183 AA 91 diesel	<b>Hp/Kw</b>	409.00 (hp), 300.62 (kw)
<b>Asking price</b>	sold (VAT )	<b>Lying</b>	at sales office

## CONTACT

<b>Sales office</b>	De Valk Loosdrecht B.V.	<b>Telephone</b>	+31 (0)35 582 90 30
<b>Address</b>	't Breukeleveense Meentje 6 1231LM Loosdrecht / Wijdmeren NL	<b>E-mail</b>	loosdrecht@devalk.nl

## DISCLAIMER

These particulars are given in good faith as supplied but cannot be guaranteed.



## GENERAL

<b>Model</b>	DOGGERSBANK 1600
<b>Type</b>	motor yacht
<b>LOA (m)</b>	16,00
<b>Beam (m)</b>	4,70
<b>Draft (m)</b>	1,55
<b>Air draft (m)</b>	3,43
<b>Headroom (m)</b>	1,95
<b>Year built</b>	1994
<b>Builder</b>	Doggersbank Jachtbouw B.V. - Woudsend/NL
<b>Country</b>	The Netherlands
<b>Designer</b>	Vripack Naval Architects
<b>Displacement (t)</b>	31
<b>Hull material</b>	steel
<b>Hull colour</b>	blue
<b>Hull shape</b>	round-bilged
<b>Superstructure material</b>	steel
<b>Rubbing strake</b>	stainless steel
<b>Deck material</b>	steel
<b>Deck finish</b>	teak
<b>Superstructure deck finish</b>	teak
<b>Cockpit deck finish</b>	teak
<b>Window frame</b>	stainless steel
<b>Window material</b>	double glazing Gebo
<b>Deckhatch</b>	yes
<b>Portholes</b>	stainless steel Exalto
<b>Insulation</b>	foam
<b>Mast can be lowered</b>	
<b>Fuel tank (litre)</b>	steel 4300
<b>Level indicator (fuel tank)</b>	yes
<b>Freshwater tank (litre)</b>	stainless steel 1500



Level indicator (freshwater)	yes
Blackwater tank (litre)	500
Level indicator (blackwater)	yes
Wheel steering	hydraulic
Inside helm position	yes
Outside helm position	hydraulic
Emergency tiller	yes
More info on hull	Seaworthy and strongly built
Extra info	Teakdeck needs maintenance

## ACCOMMODATION

Cabins	3
Berths	6
Interior	teak
Floor	teak
Aft deck	yes
Saloon	with L-shaped sofa and table
Headroom saloon (m)	2
Heating	central heating Kabola
Chart table	yes
Aft Cabin	Covers the full width of the ship
Dinette	yes
Galley	yes
Countertop	corian
Sink	stainless steel 2x
Cooker	ceramic Miele 4x
Extractor	Miele
Microwave	Bosch gourmet 832
Fridge	Miele 155L
Freezer	seperate Vitrifrigo
Hot water system	on central heating



Water pressure system	electrical
Dishwasher	Bosch
Waste compactor	Broan
Owners cabin	twin single
Wardrobe	hanging/drawers/shelves
Bathroom	en suite
Toilet	en suite Tecma
Toilet system	electric
Wash basin	in the bathroom
Shower	en suite
Bath tub	en suite
Guest cabin 1	bunk bed Front
Wardrobe	hanging and drawers
Bathroom	en suite
Toilet	en suite Tecma
Toilet system	electric
Wash basin	in the bathroom
Shower	shared
Guest cabin 2	bunk bed Front
Wardrobe	hanging and drawers
Bathroom	en suite
Toilet	en suite Tecma
Toilet system	electric
Wash basin	in the bathroom
Shower	shared
Washing machine	Miele hydromatic combi
Dryer	Miele hydromatic combi
Extra info	yes

## MACHINERY

No of engines	1
---------------	---



<b>Make</b>	MTU
<b>Type</b>	V12 183 AA 91
<b>HP</b>	409,00
<b>kW</b>	300,62
<b>Fuel</b>	diesel
<b>Year installed</b>	1994
<b>Maximum speed (kn)</b>	10
<b>Cruising speed (kn)</b>	8
<b>Consumption (l/hr)</b>	25
<b>Engine hours</b>	1851
<b>Engine cooling system</b>	
<b>Drive</b>	shaft
<b>Engine controls</b>	mechanical Morse
<b>Gearbox</b>	hydraulic ZF
<b>Bowthruster</b>	hydraulic
<b>Exhaust</b>	dry
<b>Propeller type</b>	fixed
<b>Propeller shaft material</b>	stainless steel
<b>Electric bilge pump</b>	3x
<b>Electrical installation</b>	24/230V
<b>Generator</b>	Onan genset 12 kVa
<b>Running hours generator</b>	318
<b>Batteries</b>	yes
<b>Start battery</b>	yes
<b>Service battery</b>	yes
<b>Generator battery</b>	yes
<b>Battery charger</b>	Victron Skylla 75A/24V
<b>Inverter</b>	Victron 2500W/24V
<b>Shorepower</b>	with cable

## NAVIGATION



<b>Compass</b>	in ceiling saloon
<b>Electric compass</b>	Autohelm
<b>Depth sounder</b>	Raytheon V850 + Robertson Dataline (not working properly)
<b>Log</b>	Robertson Dataline
<b>Windset</b>	Robertson Dataline
<b>Fish finder</b>	Raytheon V850
<b>VHF</b>	Sailo RT2047 + Shipmate RS8300
<b>Autopilot</b>	Raytheon Raypilot 650
<b>Rudder angle indicator</b>	Autohelm
<b>Radar</b>	Raytheon R41XX
<b>GPS</b>	Raytheon NAV398
<b>Plotter</b>	Raychart 610ES (not working properly)
<b>Weather receiver</b>	Vetus Meteo liner
<b>Navtex</b>	Gmdss marine radio decoder
<b>Radio receiver</b>	Gmdss marine radio decoder
<b>Searchlight</b>	manual
<b>Loudhailer</b>	Raytheon Ray430
<b>Extra info</b>	navigation instruments need to checked

## EQUIPMENT

<b>Bathing platform</b>	yes
<b>Boarding ladder</b>	stainless steel
<b>Transom door</b>	yes
<b>Deck shower</b>	yes
<b>Anchor</b>	yes
<b>Anchor chain</b>	yes
<b>Windlass</b>	hydraulic Maxwell 2200
<b>Deck wash</b>	yes
<b>Sea railing</b>	stainless steel
<b>Wiper</b>	5x
<b>Horn</b>	yes



Radio-cd player	Sony radio with Sony 10-disc changer
Cockpit speakers	yes
Speakers in salon	yes









# DOGGERSBANK 1 600





# DOGGERSBANK 1600



# DOGGERSBANK 1600





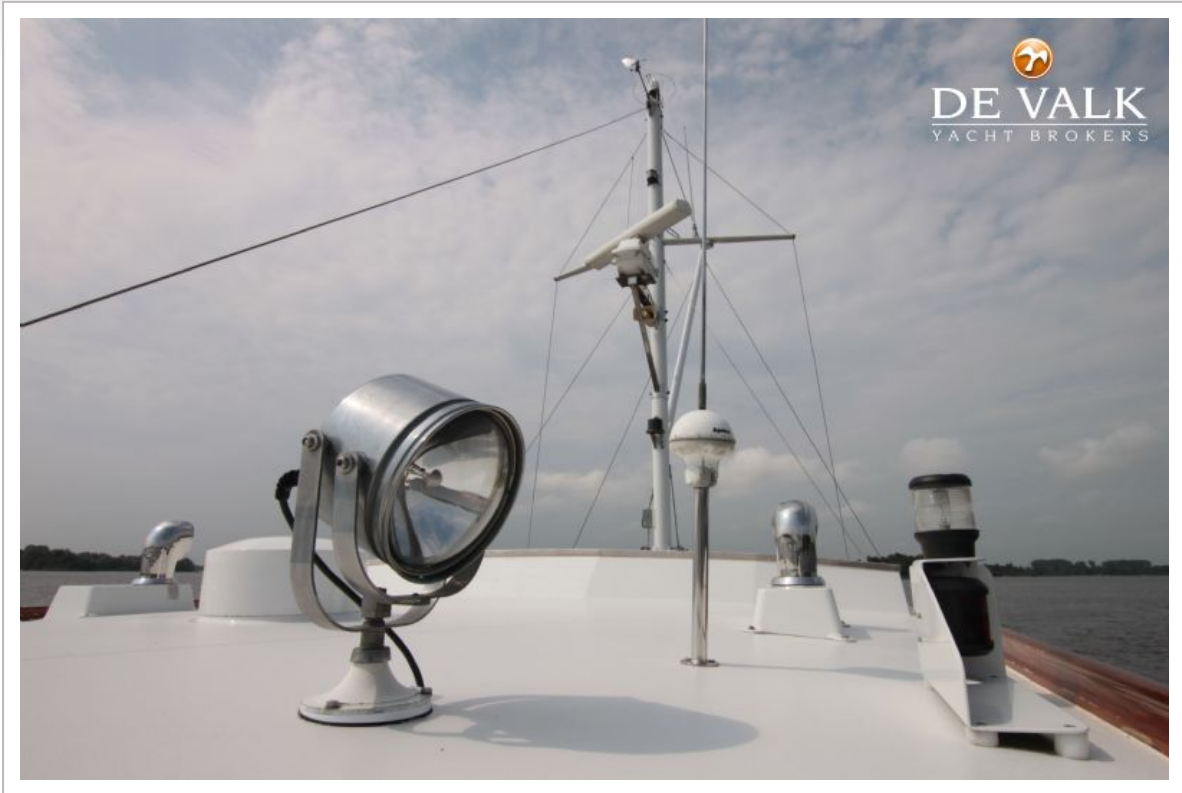
# DOGGERSBANK 1600



# DOGGERSBANK 1 600

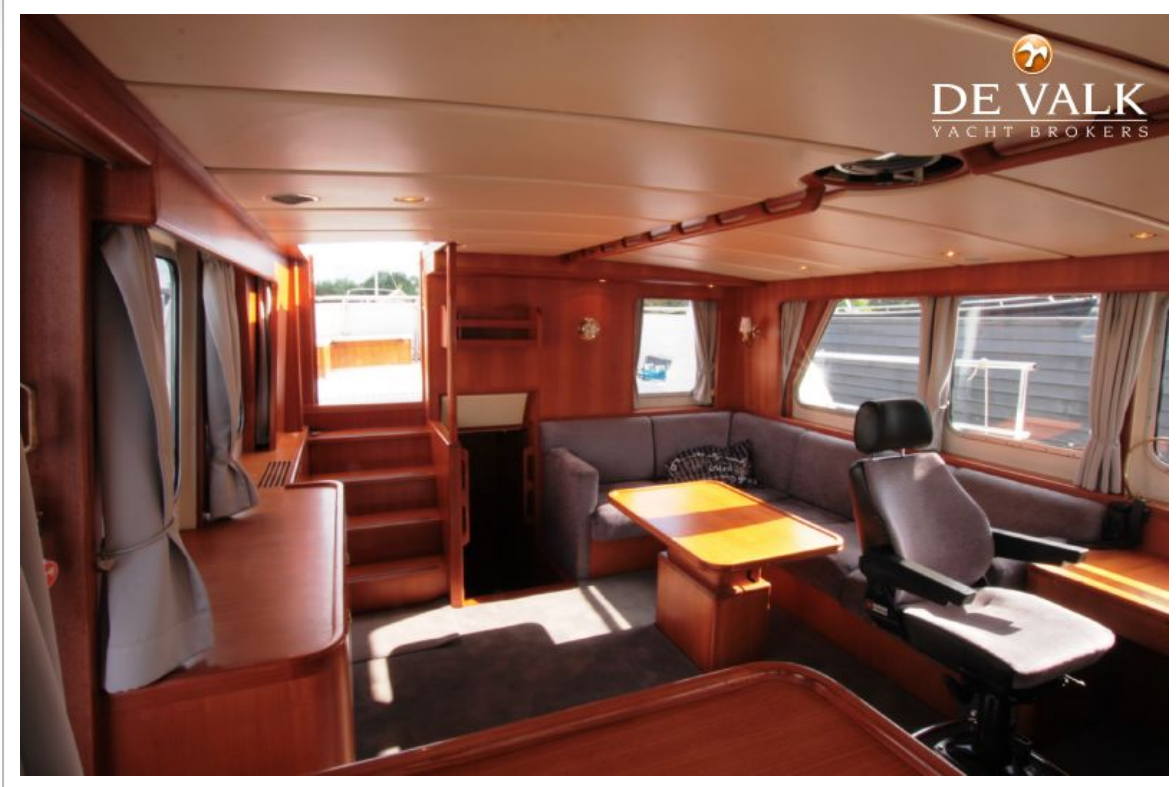


# DOGGERSBANK 1600





# DOGGERSBANK 1600

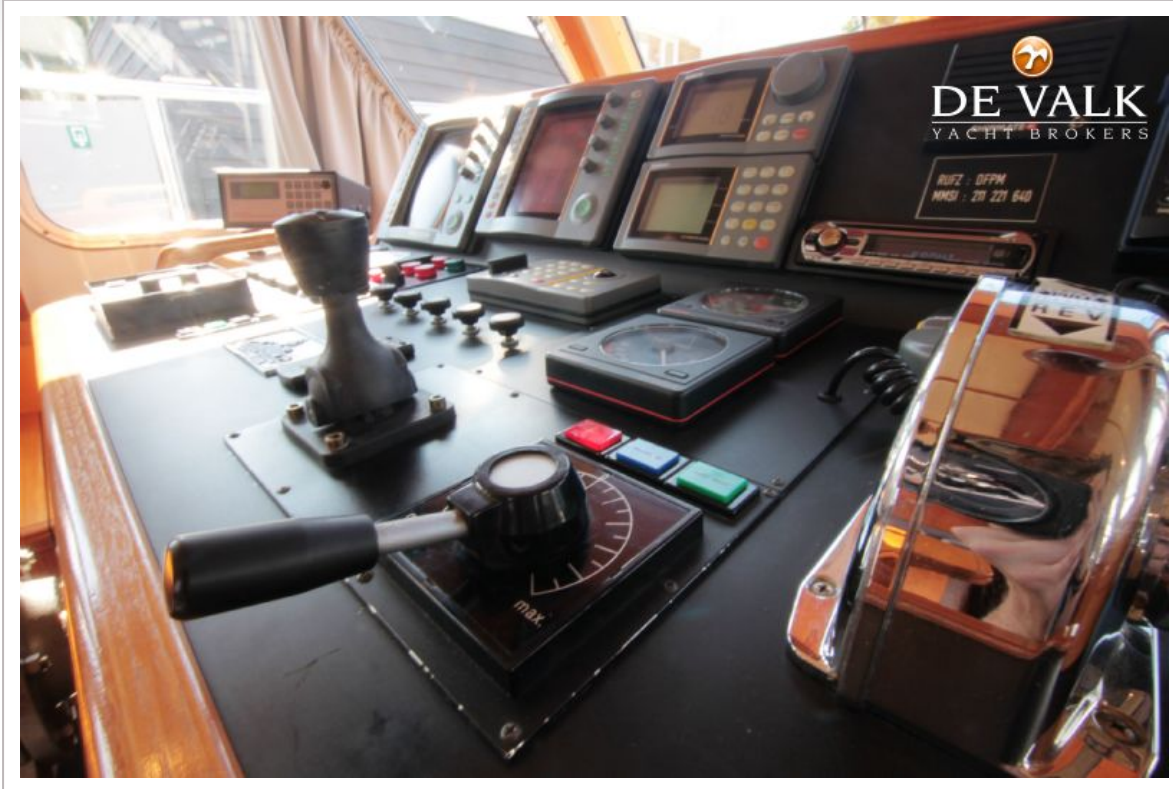


# DOGGERSBANK 1600





# DOGGERSBANK 1600



# DOGGERSBANK 1600

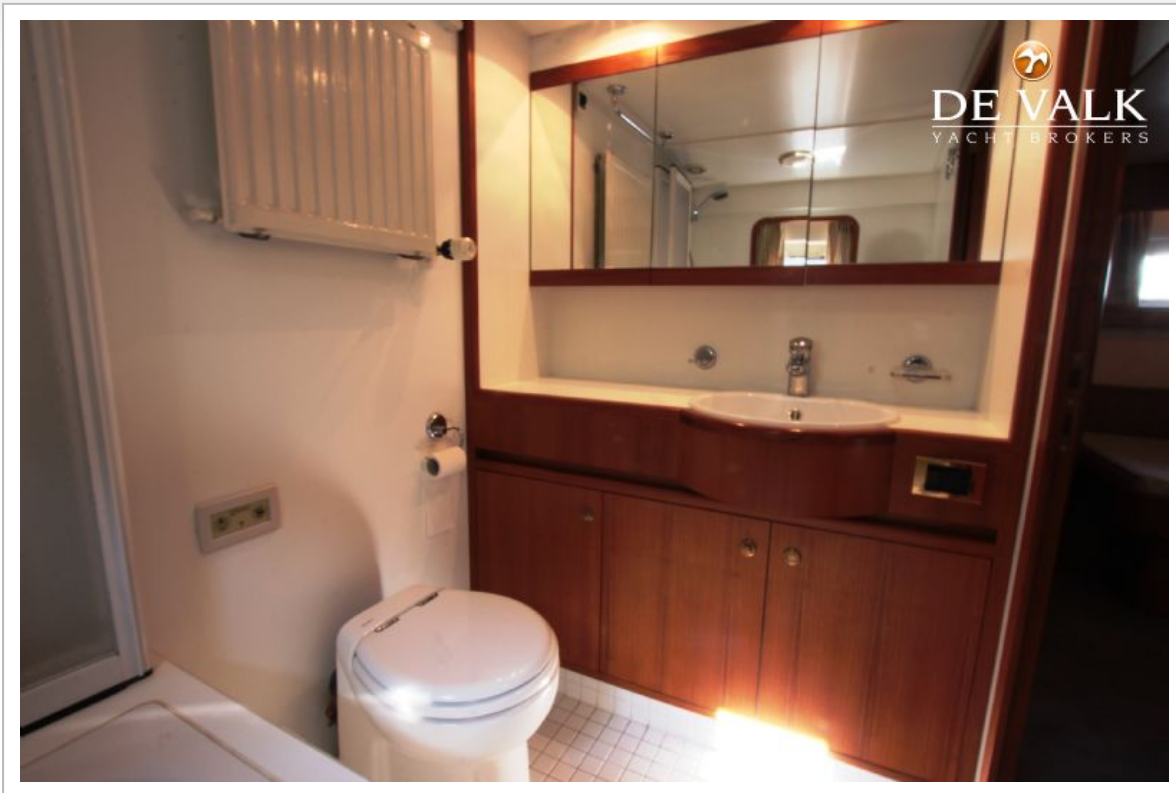




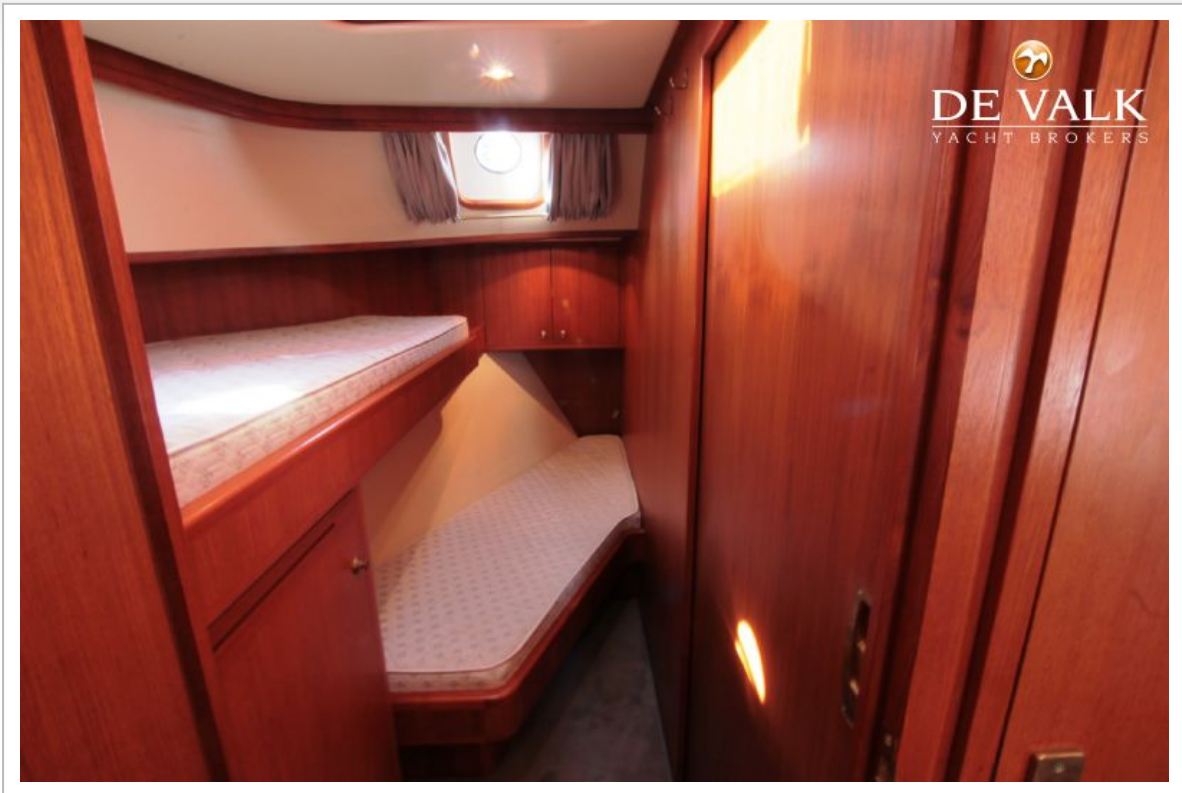
# DOGGERSBANK 1 600



# DOGGERSBANK 1600



# DOGGERSBANK 1600



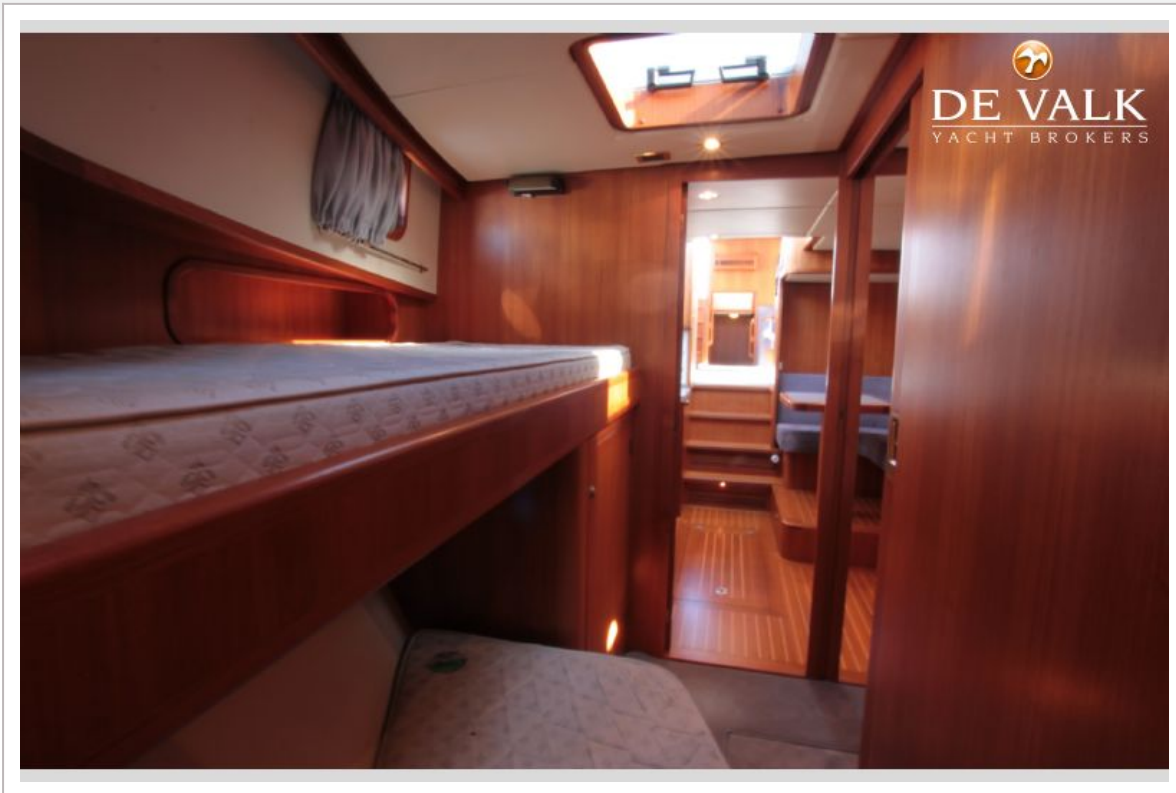


# DOGGERSBANK 1 600





# DOGGERSBANK 1600



# DOGGERSBANK 1 600





