



DE VALK
YACHT BROKERS



VRIPACK 1400



DE VALK
YACHT BROKERS

BROKERAGE | CHARTER | BERTHS | FINANCE | INSURANCE | YACHT MANAGEMENT

BROKER'S COMMENTS

This steel motor yacht is built by the well-known Dutch Smelne yard and specially designed for the current owners by Vripack. The result meets expectations: a long, safely and comfortable stay on board for sailing the European waterways and sea coastal areas. Equipped with wide gangways, lots of living- and storage space, many windows for a good view and fully equipped with two 4-cylinder Vetus Deutz diesel engines, generator, hydraulic bow- and stern thruster, hydraulic stabilizer fins etc.

Henk de Vries

SPECIFICATIONS

Dimensions	14.50 x 4.25 x 1.28 (m)	Builder	Smelne Yachtcenter Drachten
Built	2006	Cabins	2
Material	Steel	Berths	4
Engine(s)	2 x Vetus Deutz DT 44 diesel	Hp/Kw	2 x 114.00 (hp), 83.79 (kw)
Asking price	sold (VAT)	Lying	at sales office

CONTACT

Sales office	De Valk Sneek	Telephone	+31 (0)515 42 80 30
Address	Zwolsmanweg 7 8606 KC Sneek NL	E-mail	sneek@devalk.nl

DISCLAIMER

These particulars are given in good faith as supplied but cannot be guaranteed.



GENERAL

Model	VRIPACK 1400
Type	motor yacht
LOA (m)	14,50
Beam (m)	4,25
Draft (m)	1,28
Air draft (m)	2,90
Headroom (m)	2,00
Year built	2006
Builder	Smelne Yachtcenter Drachten
Country	The Netherlands
Designer	Vripack
Displacement (t)	23
CE norm	B
Hull material	steel
Hull colour	blue
Hull shape	multi hard chine
Keel type	boxkeel
Superstructure material	steel
Deck material	steel
Deck finish	teak
Window frame	aluminium
Window material	double glazing
Portholes	aluminium
Insulation	foam
Mast can be lowered	hydraulic
Fuel tank (litre)	steel 2000
Freshwater tank (litre)	stainless steel 1100
Blackwater tank (litre)	350
Wheel steering	hydraulic
More info on hull	flared bow



Extra info

many (open) windows for a good view and pleasant visual contact with the water

ACCOMMODATION

Cabins	2
Berths	4
Interior	teak
Floor	teak and holly
Saloon	lots of storage space
Heating	central heating Kabola
Galley	yes
Countertop	wood
Sink	stainless steel
Cooker	ceramic
Microwave	Miele Combie
Fridge	with freezer compartment Waeco 2x 80 liter
Hot water system	on central heating
Water pressure system	electrical
Dishwasher	Miele
Owners cabin	french bed
Bed length (m)	2.00 x 1.70 m.
Wardrobe	hanging and drawers
Bathroom	en suite
Toilet	en suite
Toilet system	electric
Wash basin	in the bathroom
Shower	en suite
Guest cabin 1	double bed
Bed length (m)	2.00 x 1.60 m.
Wardrobe	hanging and drawers
Bathroom	shared



Toilet	shared
Toilet system	electric
Wash basin	in the bathroom
Shower	shared
Washing machine	Miele W 2105
Dryer	Miele T 4223 C
Extra info	only 1 staircase with 3 steps, ground floor living area

MACHINERY

No of engines	2
Make	Vetus Deutz
Type	DT 44
HP	114,00
kW	83,79
Fuel	diesel
Year installed	2006
Engine hours	1196
Drive	shaft
Engine controls	electrical
Gearbox	hydraulic
Bowthruster	hydraulic
Sternthruster	hydraulic
Gearbox	hydraulic
Exhaust	watercooled
Propeller type	fixed
Propeller blades	5-bladed
Propeller shaft material	stainless steel
Shaft lubrication	water
Electric bilge pump	yes
Electrical installation	12/ 24/ 220 Volt
Generator	wet exhaust Whisper 8 kWa



Start battery	2x 165 Ah
Service battery	4x 225 Ah
Generator battery	1x 85 Ah
Battery charger	2 x Mastervolt
Inverter	Mastervolt 12/ 2000
Shorepower	with cable
Stabilizers	fin

NAVIGATION

Electric compass	Raymarine St 60
Depth sounder	Raymarine St 60
Log	Raymarine St 60
VHF	Raymarine 240 E
Autopilot	Hydrosta navio 202
Plotter	Raymarine C 120
Searchlight	Jabsco

EQUIPMENT

Cockpit chairs	2x
Bathing platform	yes
Boarding ladder	yes
Deck shower	yes
Anchor	Pool
Anchor chain	yes
Windlass	hydraulic Lofrans Tigres
Deck wash	yes
Sea railing	stainless steel
Wiper	3x with sprinkler system
Horn	air pressure Asa
Fenders	yes
Mooring lines	yes



TV	yes
Radio-cd player	Pioneer
Cockpit speakers	yes
Speakers in salon	yes
Extra info	yes

RIGGING

Material mast





VRIPACK 1400

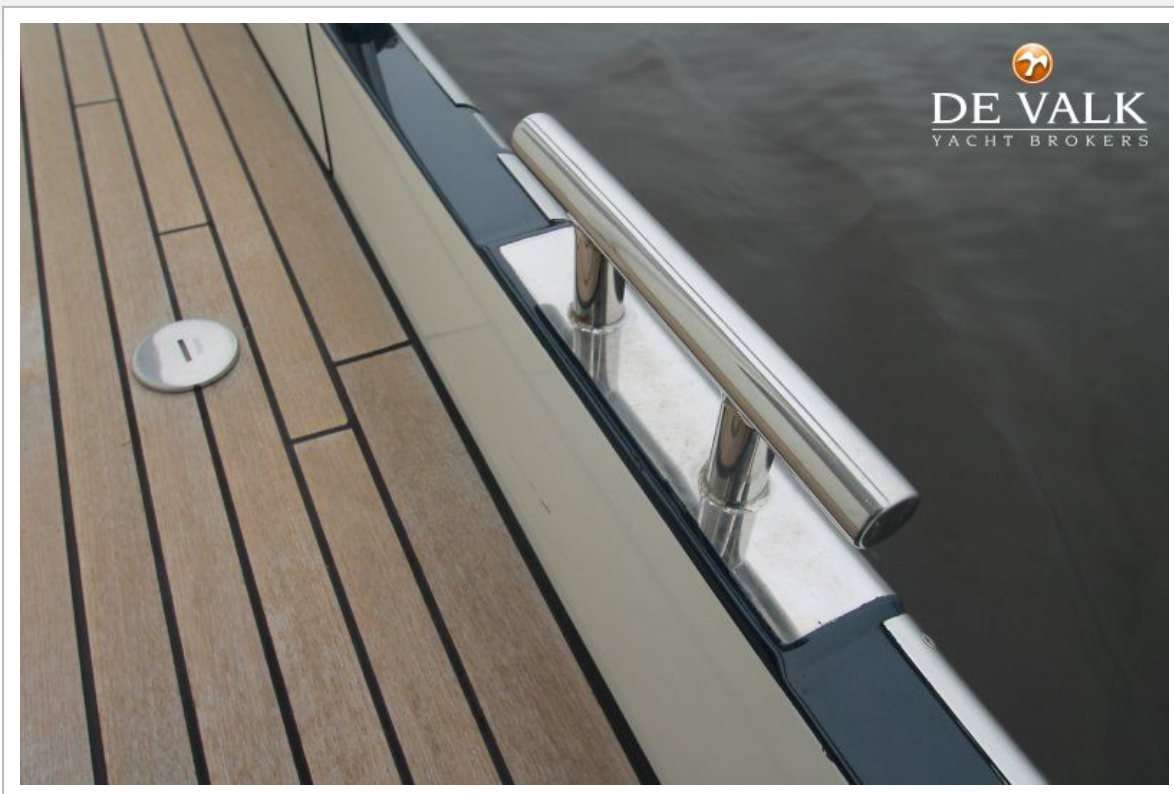


VRIPACK 1400

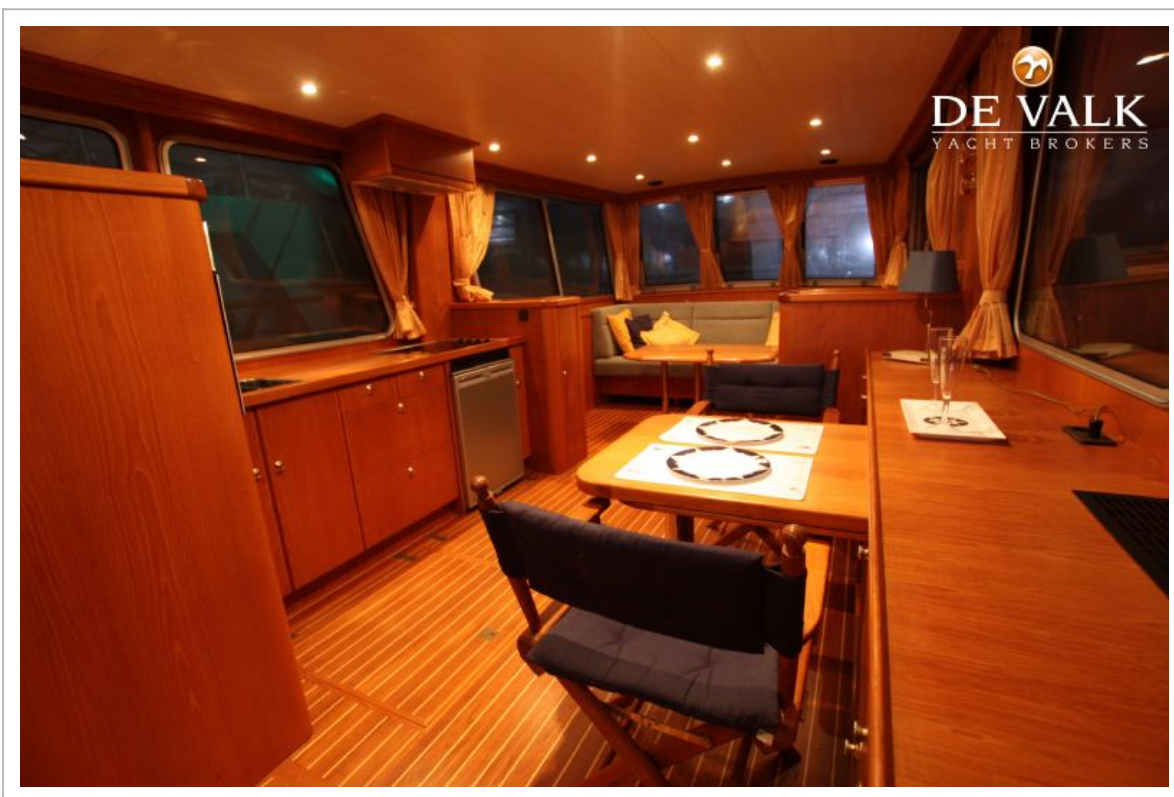
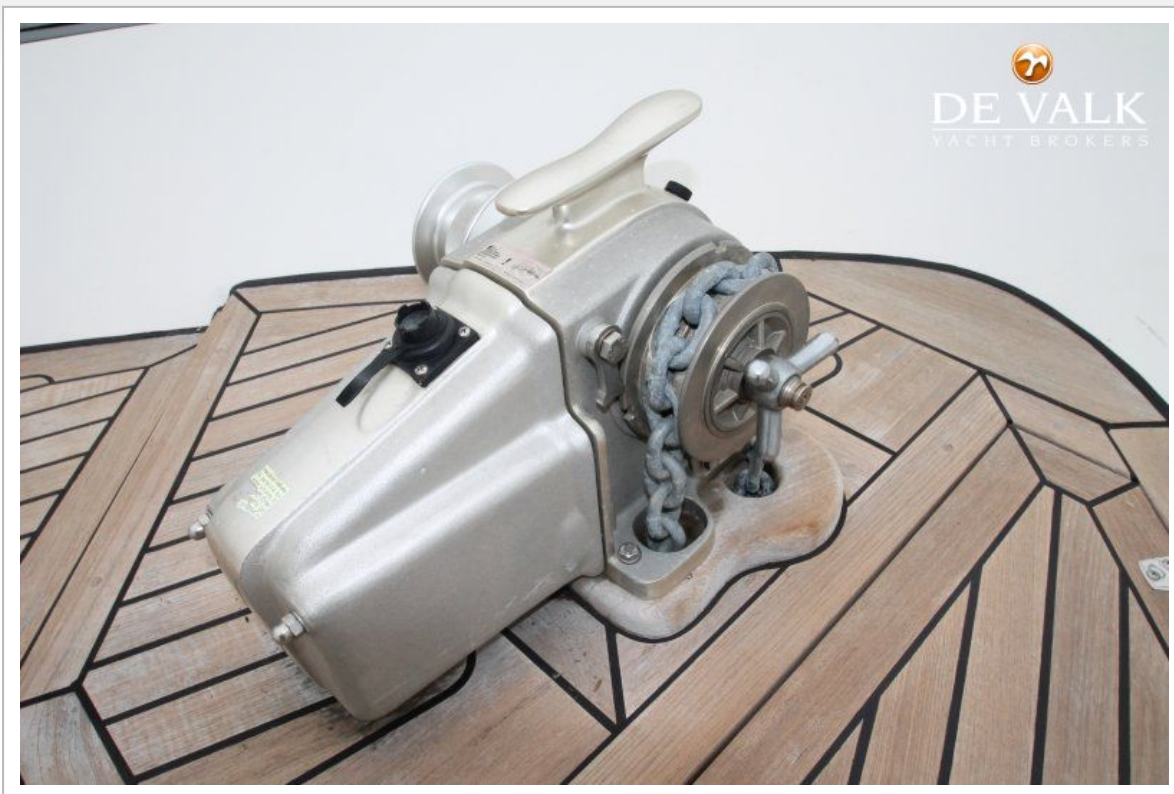


VRIPACK 1400





VRIPACK 1400



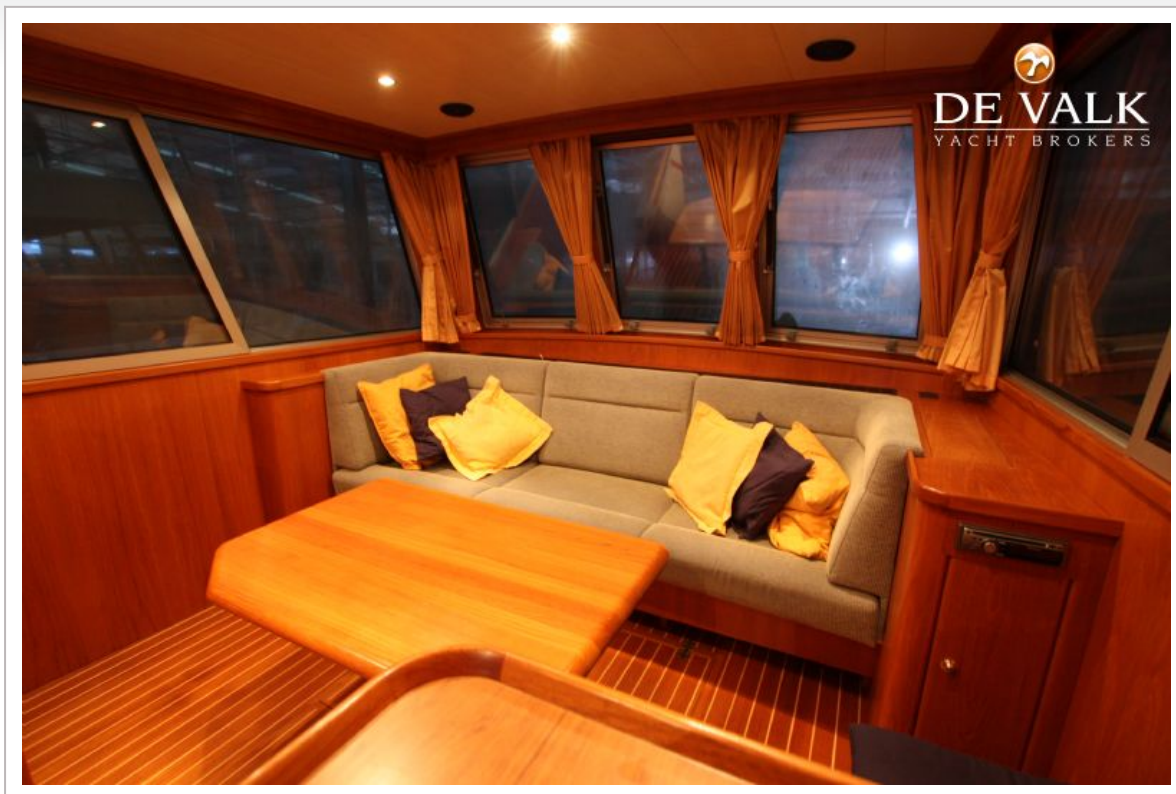
VRIPACK 1400

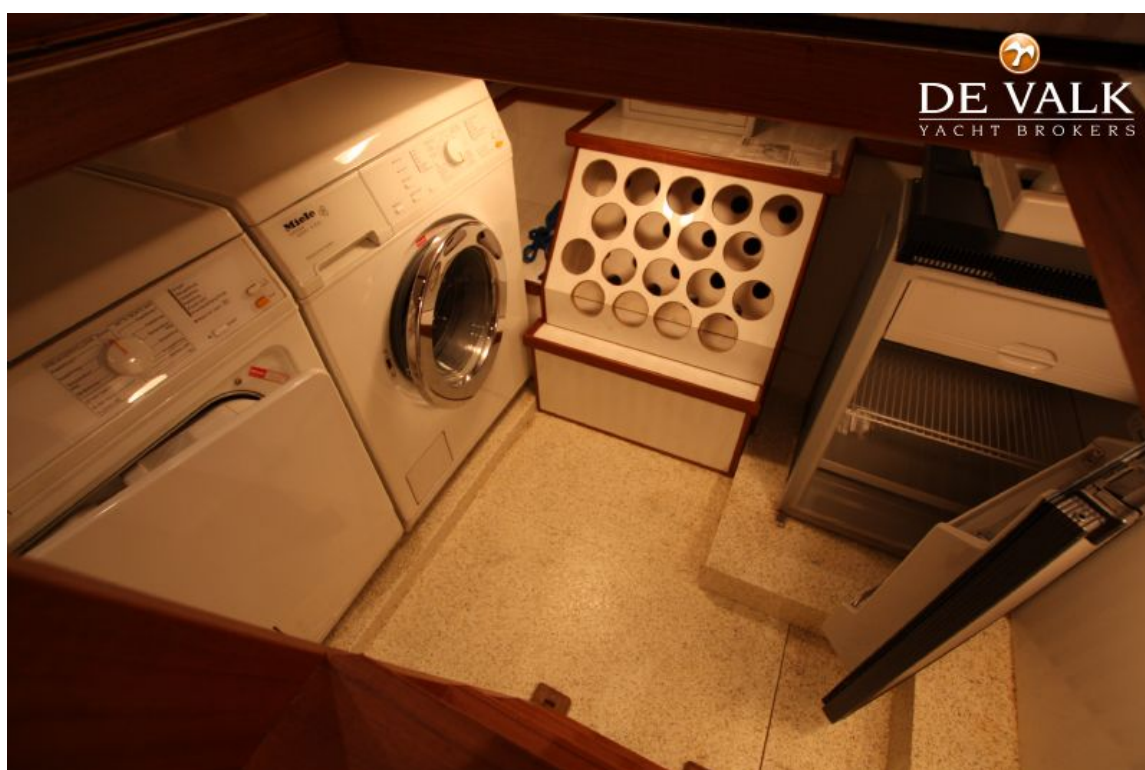
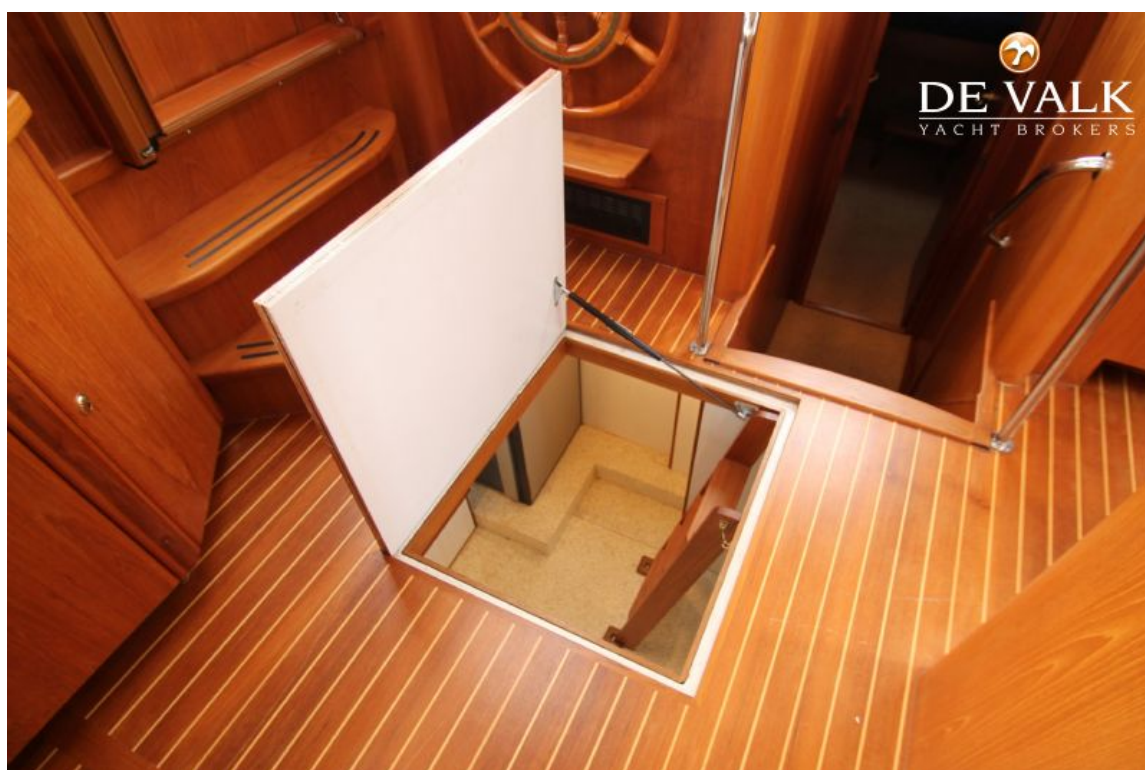


VRIPACK 1400



VRIPACK 1400





VRIPACK 1400



VRIPACK 1400

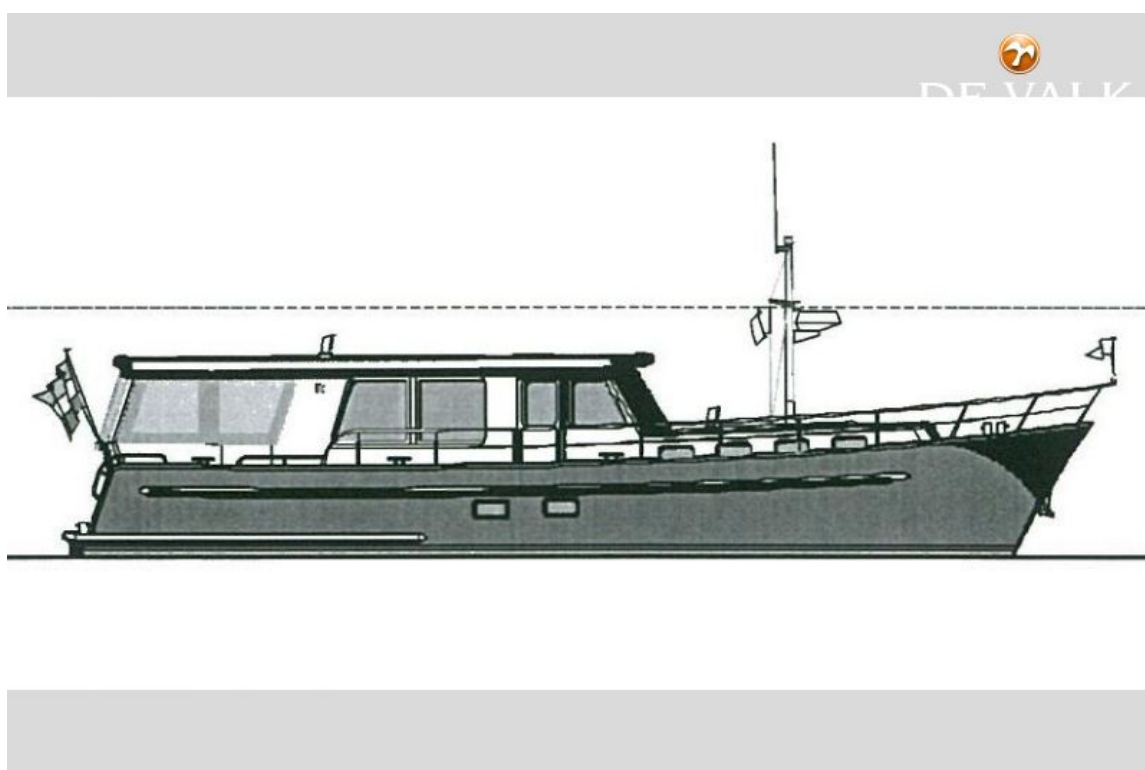


VRIPACK 1400



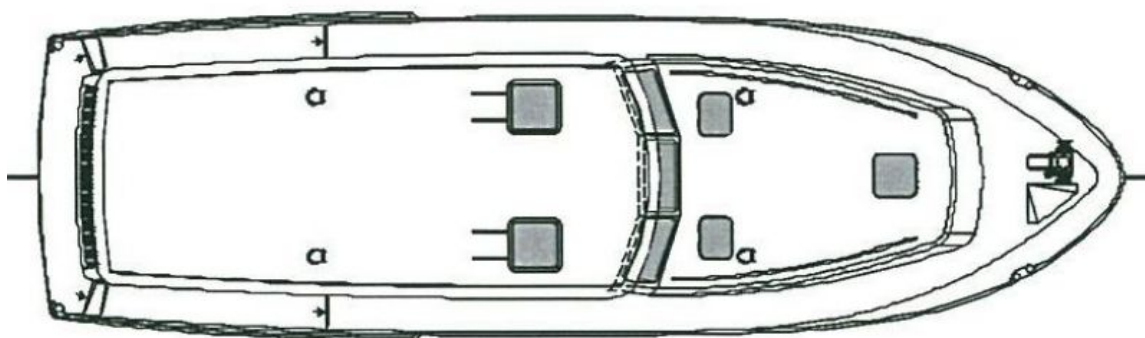
VRIPACK 1400





VRIPACK 1400


DE VALK
YACHT BROKERS




DE VALK
YACHT BROKERS

