



LEHMANN 1200 FLY

LEHMANN 1200 FLY

BROKER'S COMMENTS

This Lehman 1200 Fly is very complete equipped with i.a. twin Iveco diesel engines, electric bow thruster, generator and a complete set of navigation. This semi-displacement motor yacht has very good sailing capacities. "Silenus" is ready to go and you are very welcome to visit her in our sales marina in Sneek.

Arne Doodeman

SPECIFICATIONS

Dimensions	12.00 x 3.75 x 0.85 (m)	Builder	Lehmann Yachten
Built	1993	Cabins	2
Material	Steel	Berths	4
Engine(s)	2 x Iveco Aifo 8041 SRM15 diesel	Hp/Kw	2 x 144.00 (hp), 105.84 (kw)
Asking price	sold (VAT)	Lying	elsewhere / Not at sales office

CONTACT

Sales office	De Valk Sneek	Telephone	+31 (0)515 42 80 30
Address	Zwolsmanweg 7 8606 KC Sneek NL	E-mail	sneek@devalk.nl

DISCLAIMER

These particulars are given in good faith as supplied but cannot be guaranteed.



LEHMANN 1200 FLY

GENERAL

Model	LEHMANN 1200 FLY
Type	motor yacht
LOA (m)	12,00
Beam (m)	3,75
Draft (m)	0,85
Air draft (m)	3,20
Year built	1993
Builder	Lehmann Yachten
Country	Germany
Displacement (t)	10
Hull material	steel
Hull colour	white
Superstructure material	steel
Deck material	steel
Deck finish	anti-slip paint
Window frame	aluminium
Window material	tempered glass 5mm
Flybridge	yes
Radar arch	collapsible Stainless steel
Fuel tank (litre)	800
Freshwater tank (litre)	600
Wheel steering	yes
Inside helm position	yes
Flybridge helm position	yes

ACCOMMODATION

Cabins	2
Berths	4
Interior	teak
Layout	yes



LEHMANN 1200 FLY

Floor	carpet
Aft deck	yes
Heating	diesel ducted hot air Webasto
Aft Cabin	yes
Dinette	yes
Dinette to convert into berth	yes
Galley	yes
Countertop	yes
Sink	emaille
Cooker	electric 4-burner
Microwave	yes
Fridge	2 x
Hot water system	220V + engine
Water pressure system	yes
Owners cabin	french bed
Wardrobe	yes
Bathroom	yes
Toilet	shared
Toilet system	electric
Wash basin	in the bathroom
Shower	shared
Guest cabin 1	v-bed
Wardrobe	yes

MACHINERY

No of engines	2
Make	Iveco
Type	Aifo 8041 SRM15
HP	144,00
kW	105,84
Fuel	diesel



Maximum speed (kn)	15,5
Cruising speed (kn)	12
Engine hours	1950
Engine cooling system	freshwater heat exchanger
Engine controls	manual
Gearbox	hydraulic Velvet
Bowthruster	electric Vetus
Propeller type	fixed
Propeller shaft material	stainless steel
Shaft lubrication	water
Electric bilge pump	yes
Generator	Fisher Panda 3,5 kw
Batteries	yes
Battery charger/inverter	Victron
Shorepower	with cable

NAVIGATION

Electric compass	VDO Logic
Depth sounder	VDO Logic
Log	VDO Logic
VHF	Shipmate
Autopilot	yes
Rudder angle indicator	VDO
Radar	Furuno
Navtex	Clipper navtex

EQUIPMENT

Sprayhood	yes
Bathing platform	yes
Boarding ladder	yes
Deck shower	yes



LEHMANN 1200 FLY

Anchor	yes
Anchor chain	yes
Windlass	electrical
Deck wash	yes
Davits	stainless steel
Sea railing	stainless steel
Wiper	yes
Horn	air pressure
Fenders	yes
Mooring lines	yes
Radio-cd player	Sony radio/cassette
Clock - barometer	clock and barometer



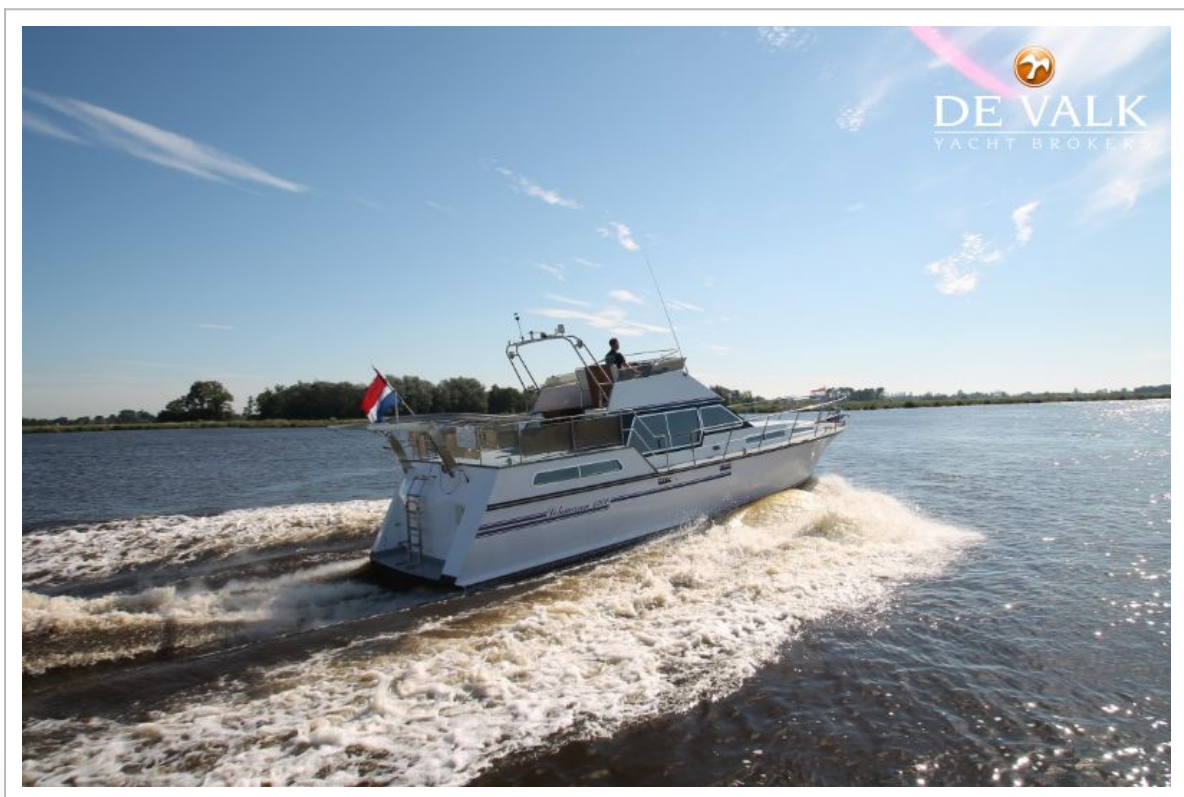
LEHMANN 1200 FLY



LEHMANN 1200 FLY



LEHMANN 1200 FLY



LEHMANN 1200 FLY



LEHMANN 1200 FLY



LEHMANN 1200 FLY



LEHMANN 1200 FLY



LEHMANN 1200 FLY



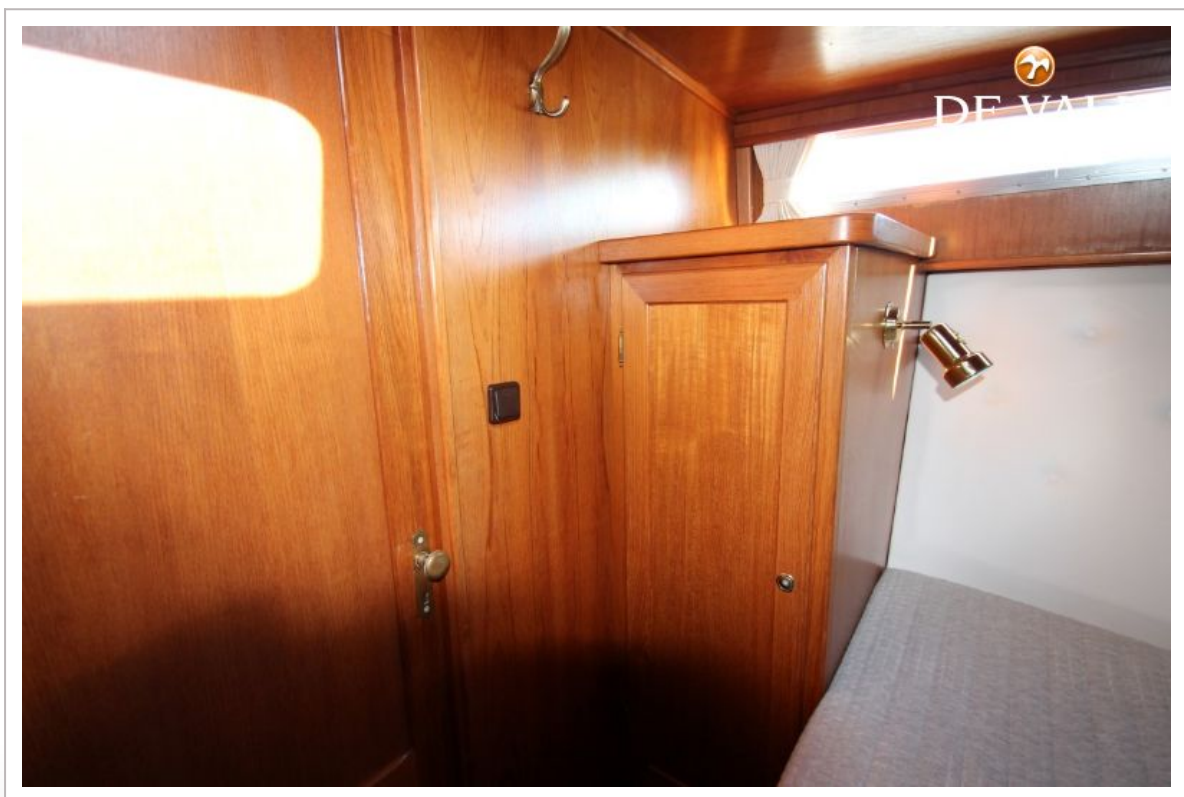
LEHMANN 1200 FLY



LEHMANN 1200 FLY



LEHMANN 1200 FLY



LEHMANN 1200 FLY



