



## VRIPACK KOTTER 1300

## BROKER'S COMMENTS

This Vripack Kotter "Swarte Freon" had only one owner, this owner was responsible for defining the shipyard that built the ship. Are you looking for a ship with lots of space an excellent sailing characteristics, then this Vripack Kotter it is definitely worth looking at. Come and visite it in our harbor.

*Henk de Vries*

## SPECIFICATIONS

<b>Dimensions</b>	13.00 x 4.10 x 1.10 (m)	<b>Builder</b>	Jachtservice Broeresloot
<b>Built</b>	1998	<b>Cabins</b>	2
<b>Material</b>	Steel	<b>Berths</b>	4
<b>Engine(s)</b>	1 x Mercedes Benz OM352, X/1 diesel	<b>Hp/Kw</b>	135.00 (hp), 99.22 (kw)
<b>Asking price</b>	sold (VAT )	<b>Lying</b>	at sales office

## CONTACT

<b>Sales office</b>	De Valk Sneek	<b>Telephone</b>	+31 (0)515 42 80 30
<b>Address</b>	Zwolsmanweg 7 8606 KC Sneek NL	<b>E-mail</b>	sneek@devalk.nl

## DISCLAIMER

These particulars are given in good faith as supplied but cannot be guaranteed.



## GENERAL

Model	VRIPACK KOTTER 1300
Type	motor yacht
LOA (m)	13,00
Beam (m)	4,10
Draft (m)	1,10
Air draft (m)	2,75
Headroom (m)	1,97
Year built	1998
Builder	Jachtservice Broeresloot
Country	The Netherlands
Designer	Vripack
Displacement (t)	20
Ballast (tonnes)	2x 200kg
Hull material	steel
Hull colour	blue
Hull thickness (mm)	5
Hull shape	multi hard chine
Superstructure material	steel
Superstructure (mm)	4
Deck plate thickness (mm)	4
Rubbing strake	stainless steel
Deck material	steel
Deck finish	teak
Superstructure deck finish	yes
Cockpit deck finish	teak
Antifouling (year)	2017
Dorades	yes
Window frame	aluminium
Window material	double glazing
Deckhatch	yes



Portholes	aluminium
Insulation	rockwool
Mast can be lowered	manual
Fuel tank (litre)	steel 900
Level indicator (fuel tank)	yes
Freshwater tank (litre)	stainless steel 3x 500
Level indicator (freshwater)	yes
Blackwater tank (litre)	stainless steel 1x 360 2x 150
Blackwater tank extraction	yes
Wheel steering	hydraulic
Inside helm position	yes
Outside helm position	hydraulic
More info on paintwork	Hull and superstruture 2017

## ACCOMMODATION

Cabins	2
Berths	4
Crew cabin	yes
Interior	teak
Floor	teak
Saloon	yes
Headroom saloon (m)	1,97
Heating	central heating
Aft Cabin	yes
Galley	yes
Countertop	Duropol
Sink	stainless steel
Cooker	4
Fridge	yes
Hot water system	220V/engine/heating
Water pressure system	electrical



# VRIPACK KOTTER 1300

Owners cabin	French bed
Bed length (m)	2,0
Wardrobe	hanging and drawers
Bathroom	en suite
Toilet	en suite
Toilet system	manual
Wash basin	in the bathroom
Shower	en suite
Guest cabin 1	twin single
Bed length (m)	2,0
Wardrobe	hanging and drawers
Toilet	shared
Toilet system	manual
Wash basin	at the toilet

## MACHINERY

No of engines	1
Make	Mercedes Benz
Type	OM352, X/1
HP	135,00
kW	99,22
Fuel	diesel
Year installed	2000
Maximum speed (kn)	11
Cruising speed (kn)	5,5
Consumption (l/hr)	3
Engine hours	760
Drive	shaft
Engine controls	bowden cable
Gearbox	hydraulic
Bowthruster	electric Cupa



Exhaust	dry
Thrust bearing	yes
Propeller type	fixed
Propeller blades	4
Propeller shaft material	stainless steel
Shaft lubrication	water
Electric bilge pump	1x
Electrical installation	12 V
Batteries	6
Start battery	2
Service battery	4 (new 2017)
Battery monitor	yes
Battery charger	Victron
Diode battery combiners	yes
Shorepower	with cable

## NAVIGATION

VHF	yes
-----	-----

## EQUIPMENT

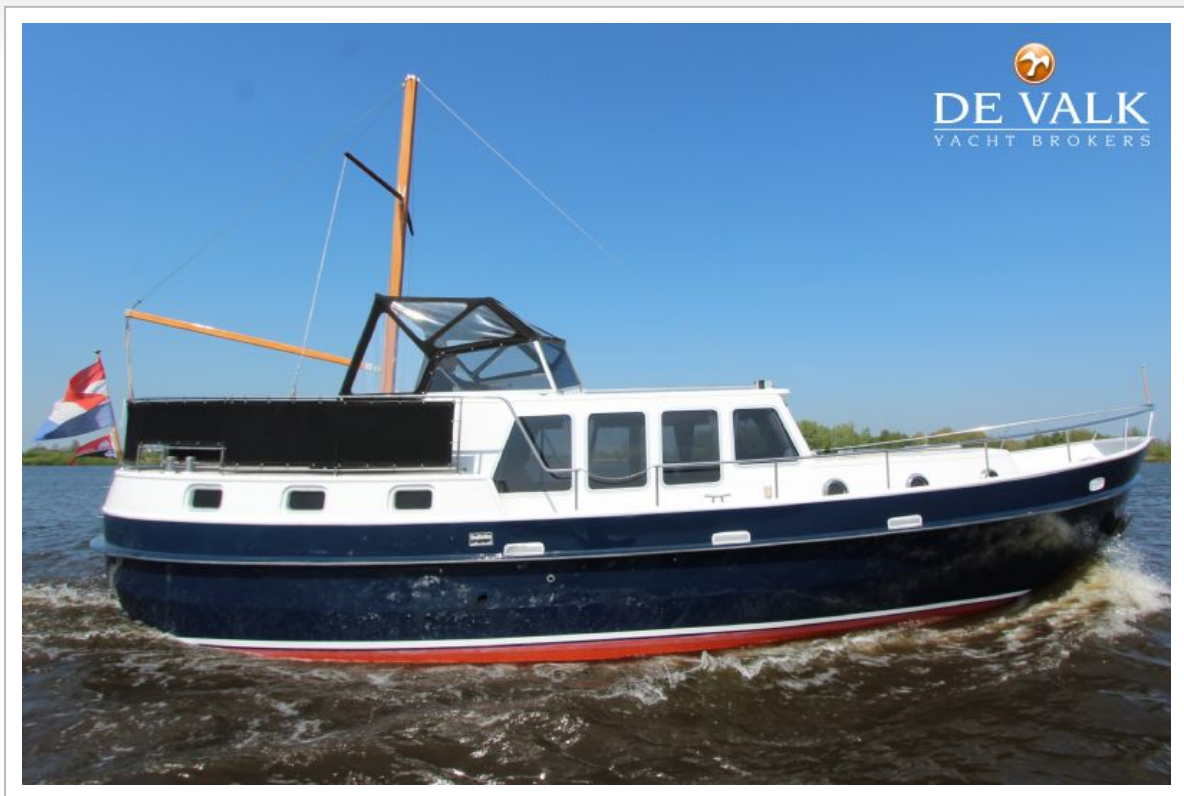
Fixed windscreen	yes
Boarding ladder	stainless steel
Anchor	30 kg
Anchor chain	60 m
Windlass	manual
Deck wash	yes
Sea railing	stainless steel
Wiper	2x
Horn	electric
Fenders	yes
Mooring lines	yes



TV	yes
TV receiver	Digitenne
Radio-cd player	2x
Cockpit speakers	yes
Speakers in salon	yes
Fire extinguisher	yes

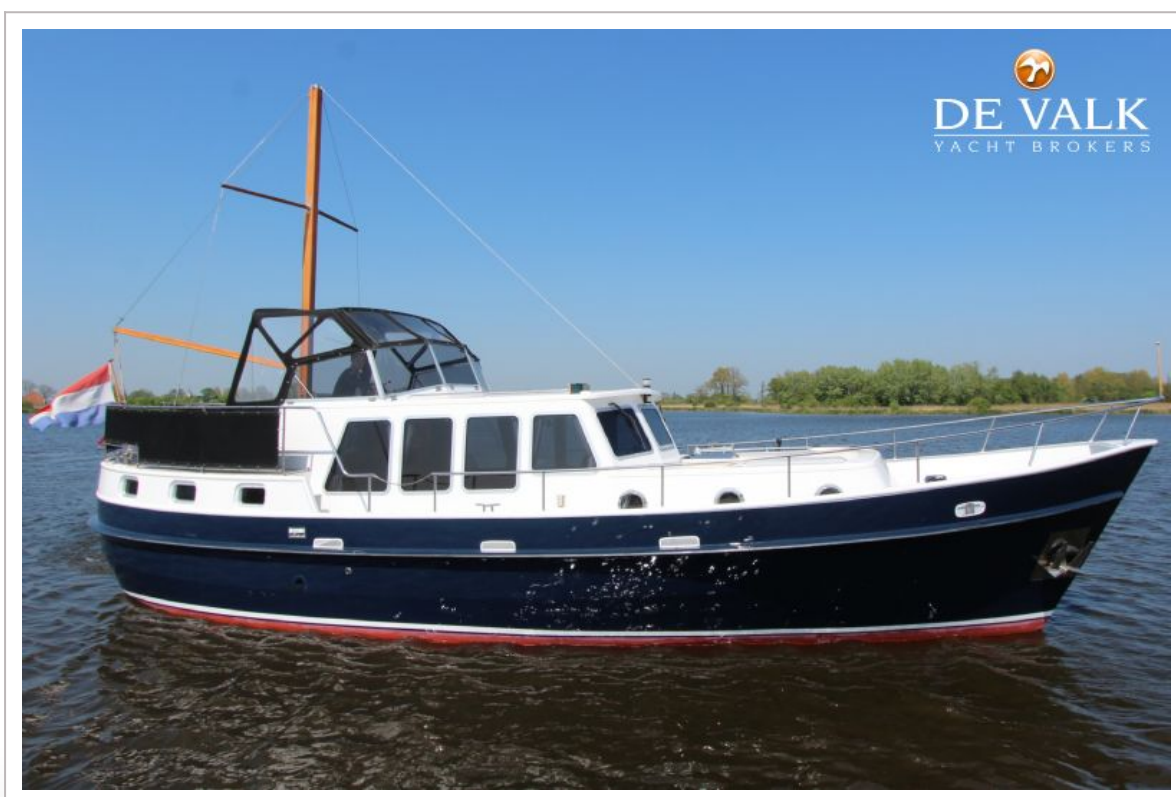


# VRIPACK KOTTER 1300





# VRIPACK KOTTER 1300



# VRIPACK KOTTER 1300



# VRIPACK KOTTER 1300

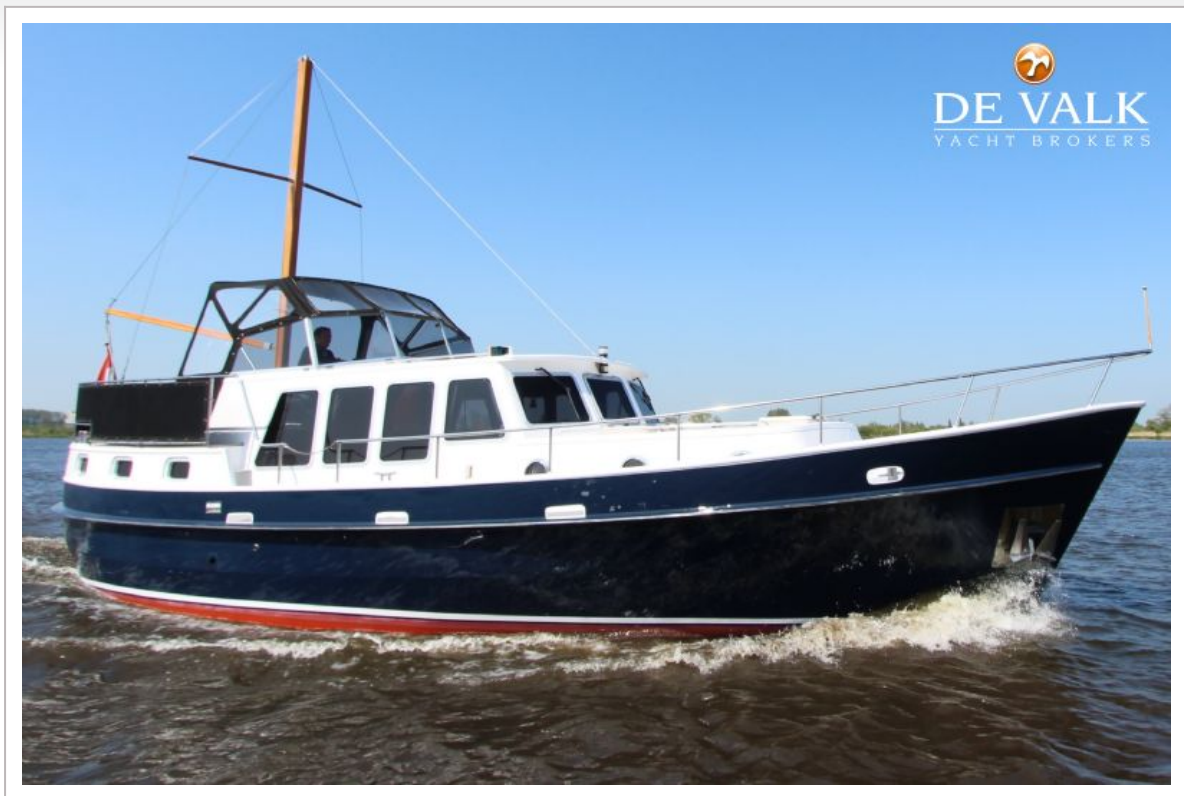




# VRIPACK KOTTER 1300

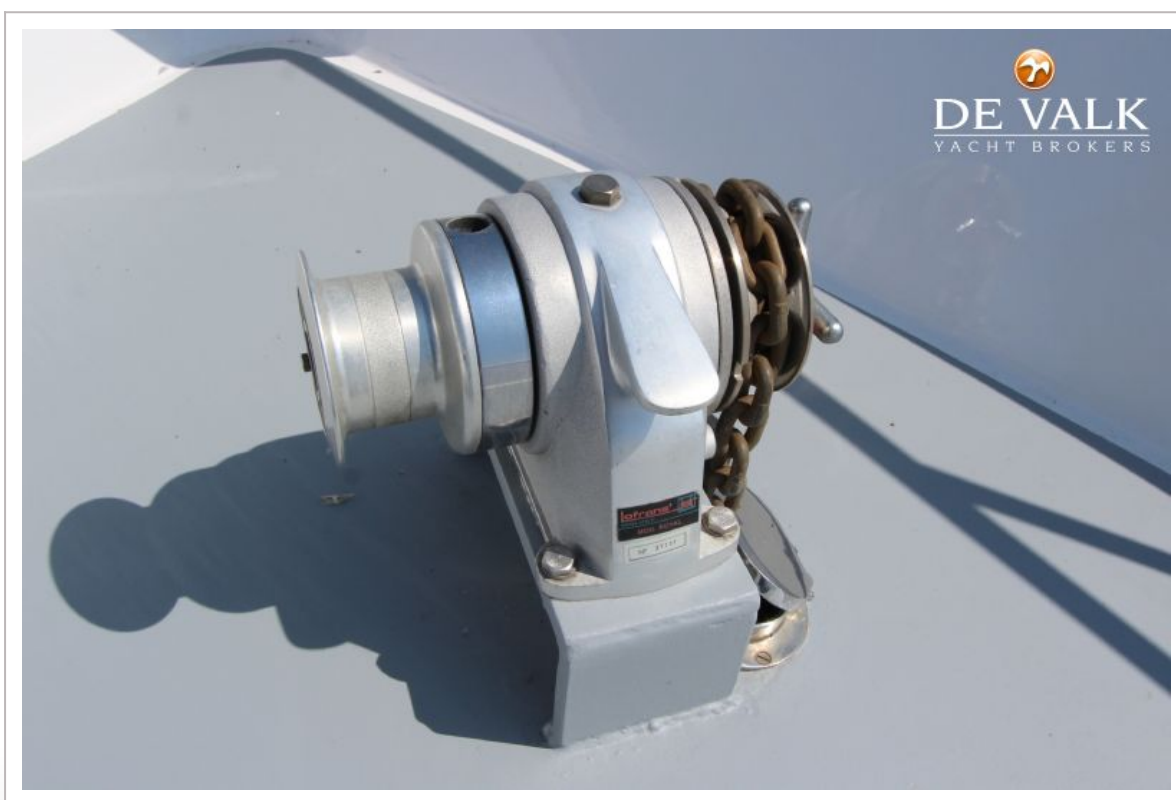


# VRIPACK KOTTER 1300

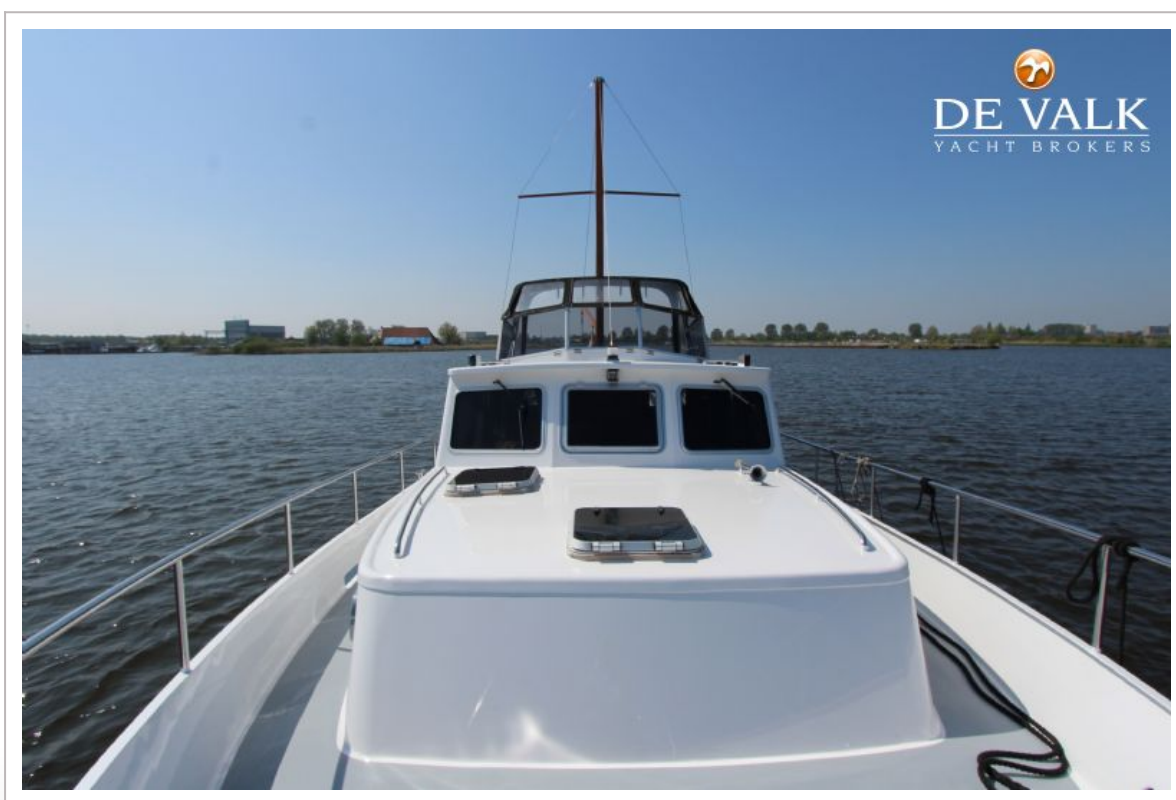




# VRIPACK KOTTER 1300



# VRIPACK KOTTER 1300





## VRIPACK KOTTER 1300

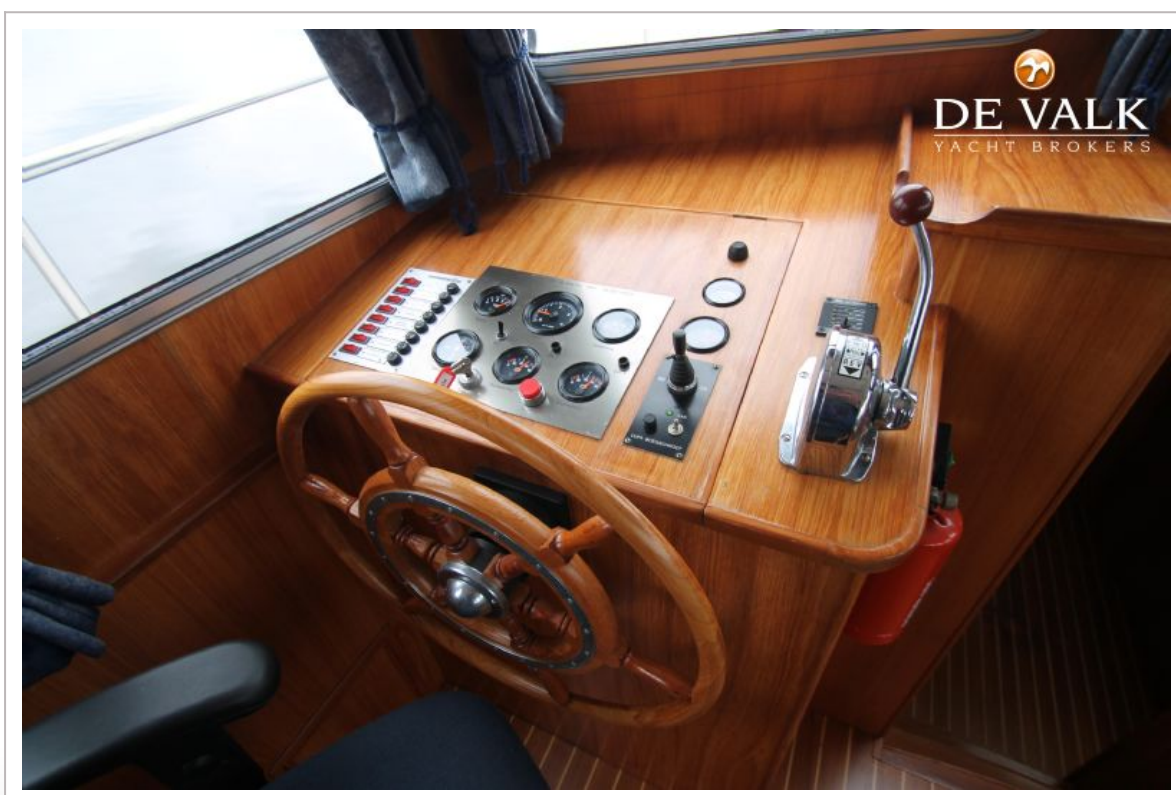




# VRIPACK KOTTER 1300



# VRIPACK KOTTER 1300

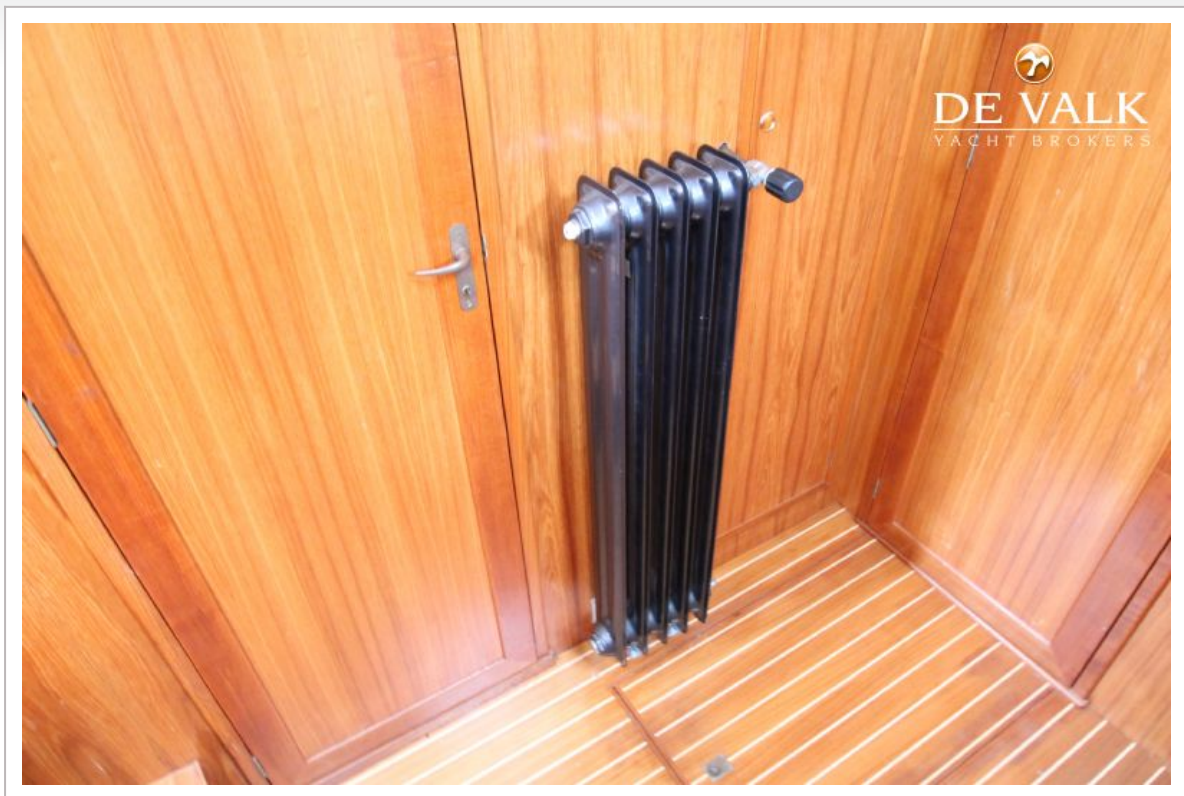




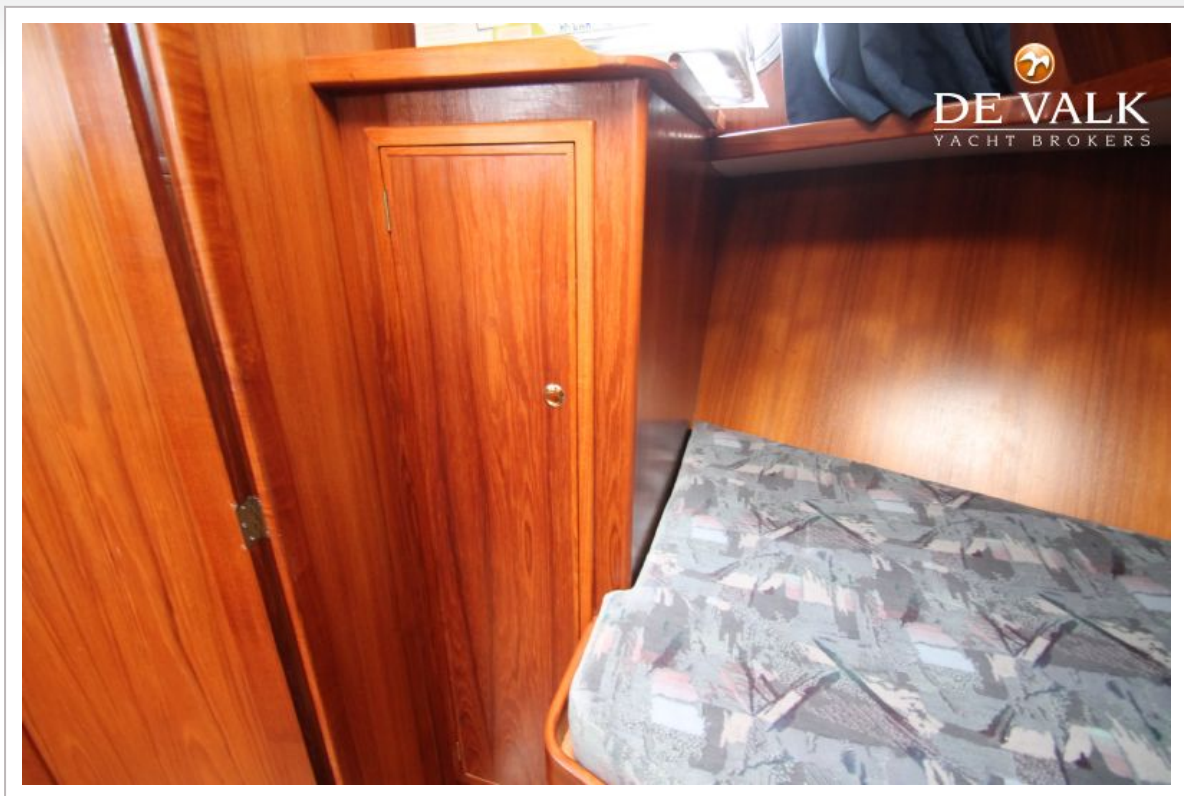
# VRIPACK KOTTER 1300



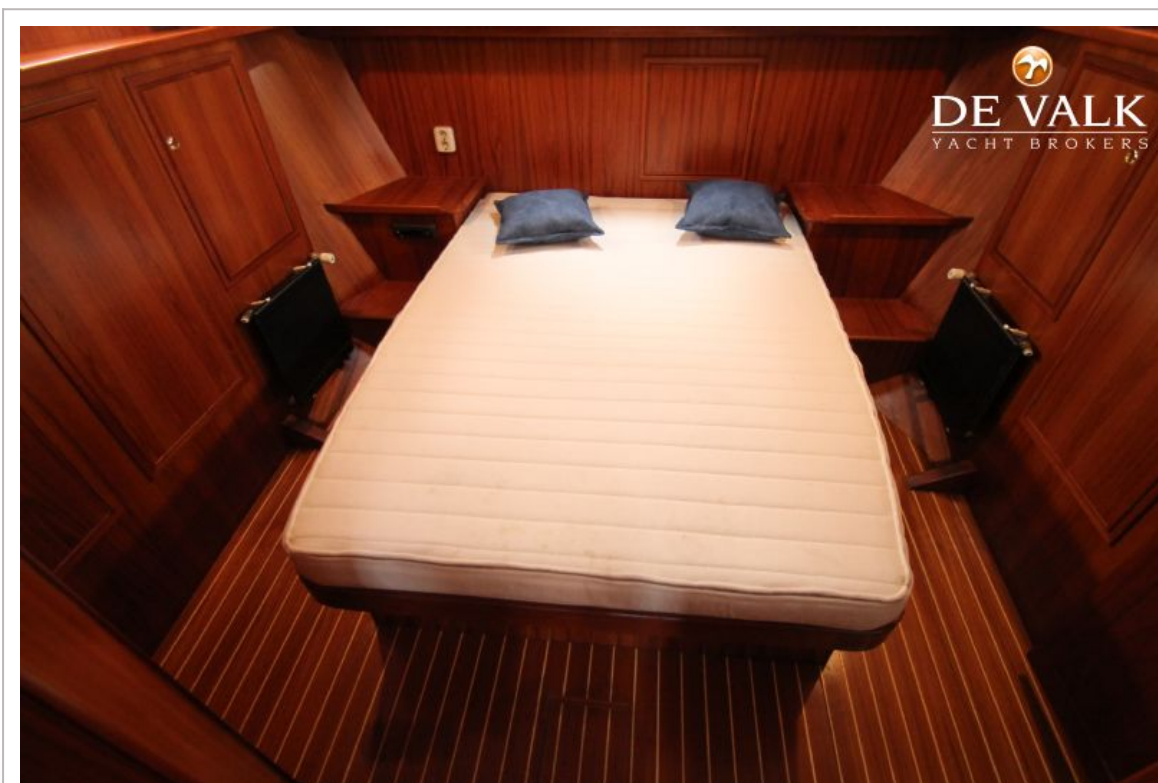
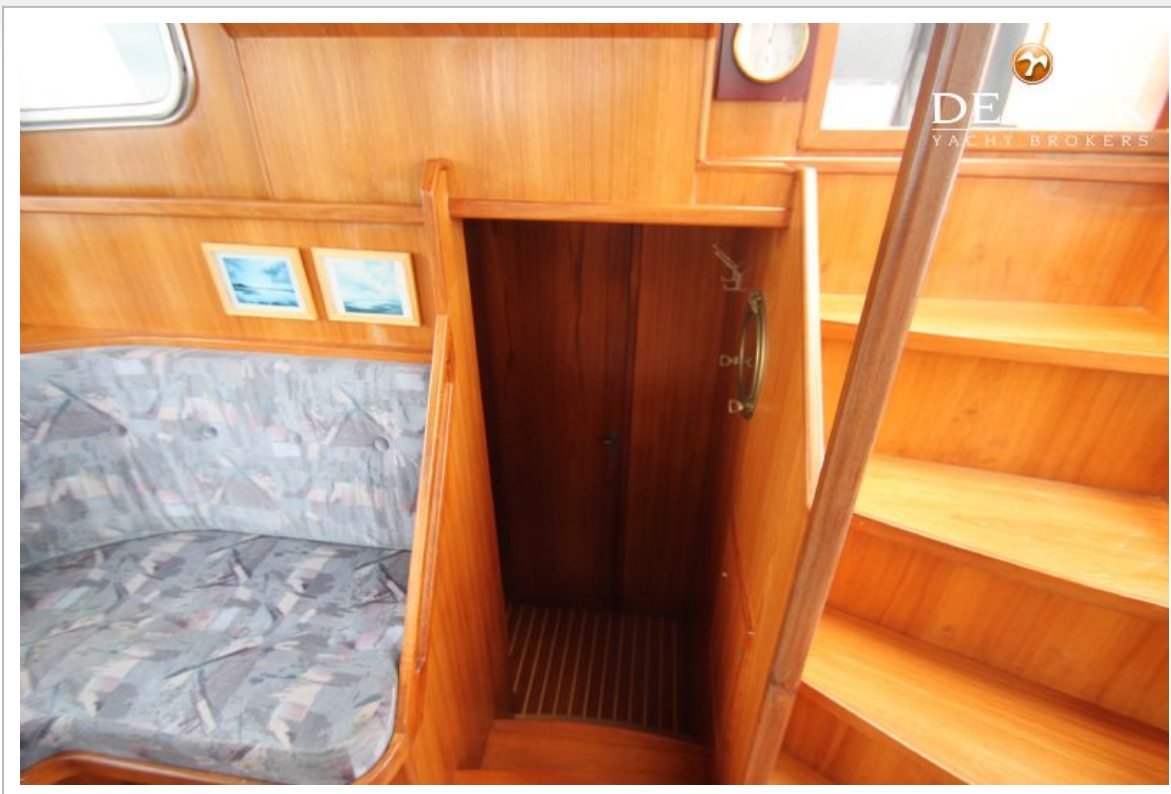
## VRIPACK KOTTER 1300







## VRIPACK KOTTER 1300





## VRIPACK KOTTER 1300



