



NAJAD 330

BROKER'S COMMENTS

This Najad 330 is well known for its safety, quality and seaworthiness. It is built under German Lloyds specifications, has a good layout, sails well and is always appreciated by experienced sailors. This Najad 330 looks very nice and is always perfectly maintained and has had the necessary upgrades including a multifunctional display from Garmin. A great and solid yacht that is ready for departure. This Najad 330 can be viewed 7 days a week in our sales harbor in Hindeloopen!

Henri van Eelen

SPECIFICATIONS

Dimensions	10.00 x 3.60 x 1.60 (m)	Builder	Najad Varvet ABZweden
Built	1994	Cabins	2
Material	GRP	Berths	6
Engine(s)	1 x Volvo Penta 2030 diesel	Hp/Kw	29.00 (hp), 21.32 (kw)
Asking price	sold (VAT)	Lying	at sales office

CONTACT

Sales office	De Valk Hindeloopen B.V.	Telephone	+31 514 52 40 00
Address	Oosterstrand 1 8713 JS Hindeloopen NL	E-mail	hindeloopen@devalk.nl

DISCLAIMER

These particulars are given in good faith as supplied but cannot be guaranteed.



GENERAL

Model	NAJAD 330
Type	sailing yacht
LOA (m)	10,00
LWL (m)	8,40
Beam (m)	3,60
Draft (m)	1,60
Air draft (m)	14,60
Year built	1994
Builder	Najad Varvet ABZweden
Country	Sweden
Designer	Erik Segerlind
Displacement (t)	6
Ballast (tonnes)	2,2
CE norm	A
Hull material	GRP
Hull colour	off-white
Hull shape	round-bilged
Superstructure material	GRP
Rubbing strake	wood
Deck material	wood
Deck finish	teak 2010
Superstructure deck finish	non-skid moulded in
Cockpit deck finish	teak
Antifouling (year)	2017
Dorades	yes
Window frame	aluminium
Deckhatch	yes
Fuel tank (litre)	GRP 150L
Level indicator (fuel tank)	yes
Freshwater tank (litre)	GRP 200L



Level indicator (freshwater)	yes
Blackwater tank (litre)	GRP
Tiller	yes

ACCOMMODATION

Cabins	2
Berths	6
Interior	mahogany
Floor	wood
Open cockpit	yes
Doghouse	yes
Saloon	yes
Headroom saloon (m)	2,10m
Heating	diesel ducted hot air Webasto
Chart table	yes
Aft Cabin	yes
Dinette	yes
Galley	yes
Countertop	plastic
Sink	stainless steel
Cooker	calor gas
Oven	yes
Fridge	Isotherm
Hot water system	220V + engine
Water pressure system	electrical
Manual and/or foot pump	Voetpomp
Coffee maker	yes
Crockery	yes
Owners cabin	v-bed
Bed length (m)	2,10m
Wardrobe	hanging



Bathroom	yes
Toilet	yes
Toilet system	manual
Wash basin	at the toilet
Shower	shared
Guest cabin 1	double bed

MACHINERY

No of engines	1
Make	Volvo Penta
Type	2030
HP	29
kW	21,32
Fuel	diesel
Year installed	1994
Maximum speed (kn)	6,5
Cruising speed (kn)	4-5
Engine cooling system	freshwater heat exchanger
Drive	sail-drive
Saildrive seal	2010
Shaft seal	2010
Engine controls	bowden cable
Gearbox	mechanical
Propeller type	fixed
Propeller blades	3x 2014
Propeller shaft material	stainless steel
Shaft lubrication	oilbath
Manual bilge pump	yes
Batteries	3
Start battery	1
Service battery	2



Diode battery combiners	yes
Shorepower	with cable

NAVIGATION

Compass	Silva 1000
Depth sounder	Autohelm
Log	Autohelm
Windset	Autohelm
Repeater	Autohelm bij navigatiehoek
VHF	Shipmate
VHF handheld	Ray 101E Raymarine
Autopilot	Raymarine ST 4000+
GPS	Garmin 126
Radar/GPS/plotter	2012 GPS MAP 4010
Electronic chart(s)	yes
Navigation lights	yes

EQUIPMENT

Fixed windscreen	yes
Sprayhood	yes
Fixed hardtop	yes
Cockpit cover	yes
Cockpit cushions	yes
Cockpit table	yes
Boarding ladder	stainless steel
Anchor	Bruce
Anchor chain	40m
Windlass	manual
Dinghy	inflatable Plastimo
Outboard	Suzuki 9PK
Outboard support	yes



Sea railing	wire
Grab rail (superstructure)	teak
Pushpit	yes
Lifejackets	yes
Safety harness	yes
Radar reflector	Trilens
Fenders	yes
Mooring lines	yes
Radio-cd player	Grundig
Cockpit speakers	1x
Speakers in salon	2x
Clock - barometer	3x

RIGGING

Rigging	fractional
Standing rigging	wire
Brand mast	Seldén
Material mast	aluminium
Spreaders	yes
Mainsail	2013 De Vries Makkum
Mainsail cover	yes
Battcars	Selden
Fully battened mainsail	2013 De Vries Makkum
Cutterstay	yes
Genoa	2013 De Vries Makkum
Genoa furler	Furlex
Genoa cover	yes
Reefing System	slabreefing Selden
Backstay adjuster	mechanical
Boomvang	gasspring Selden
Primary sheet winch	Lewmar



Genoa sheetwinches

Lewmar

Halyard winches

Lewmar

Reefing winch

yes

Spi-pole

aluminium



NAJAD 330



NAJAD 330



NAJAD 330



NAJAD 330



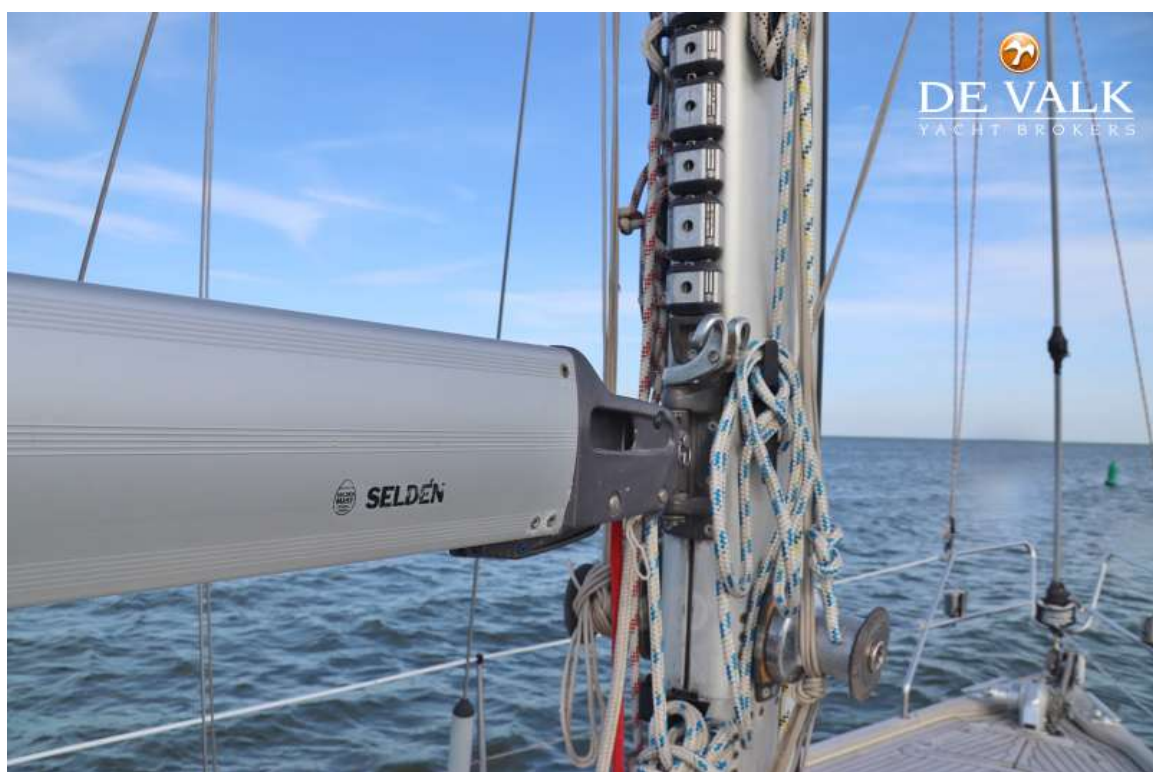
NAJAD 330



NAJAD 330



NAJAD 330



NAJAD 330



NAJAD 330



NAJAD 330



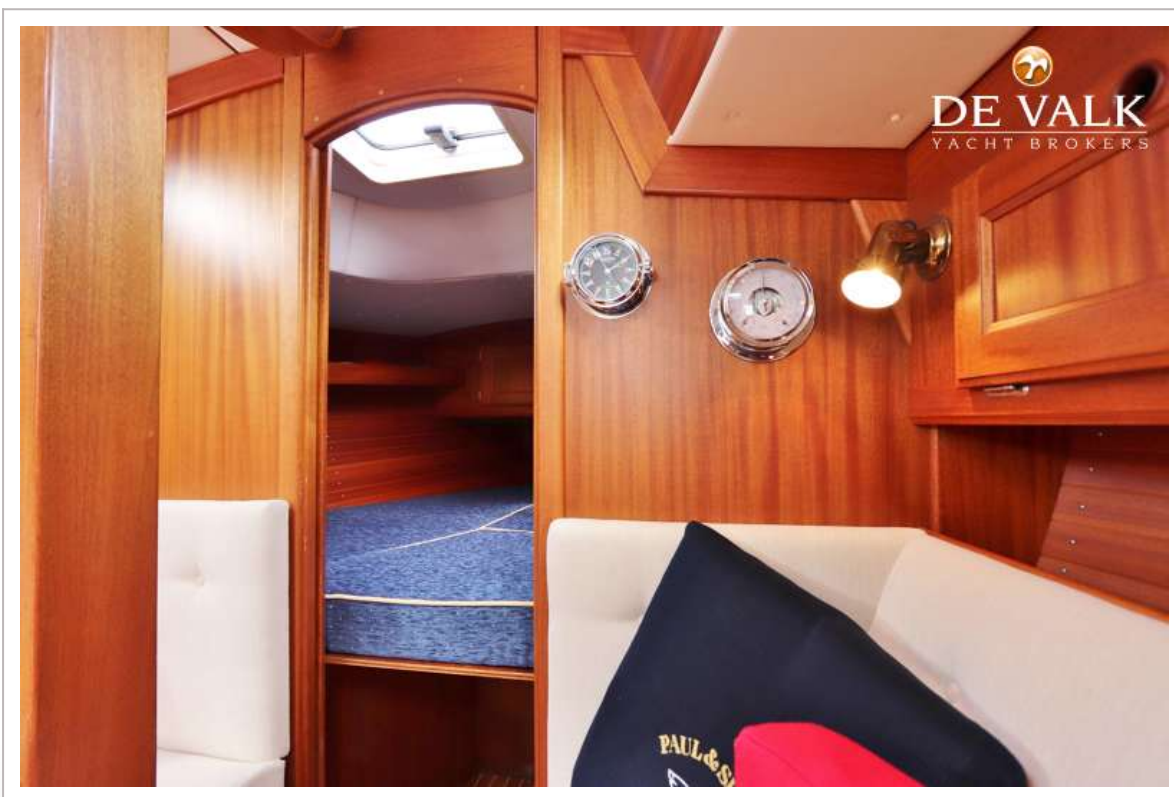
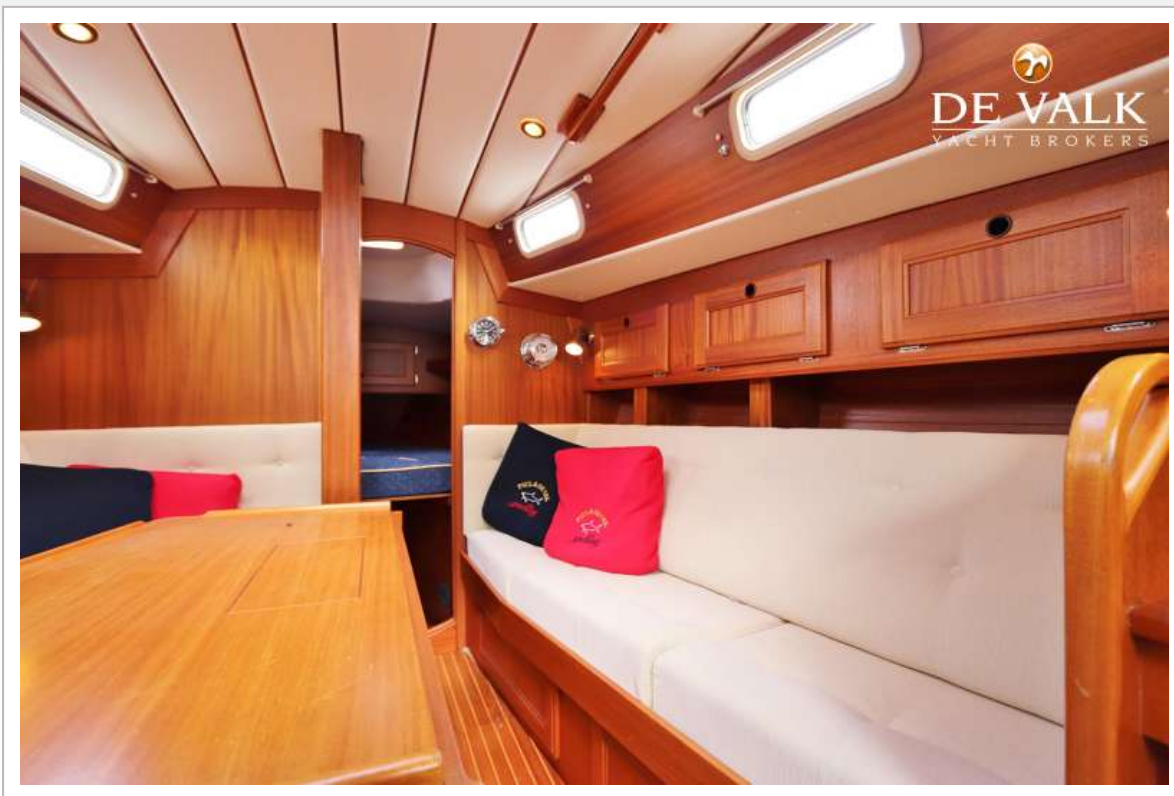
NAJAD 330



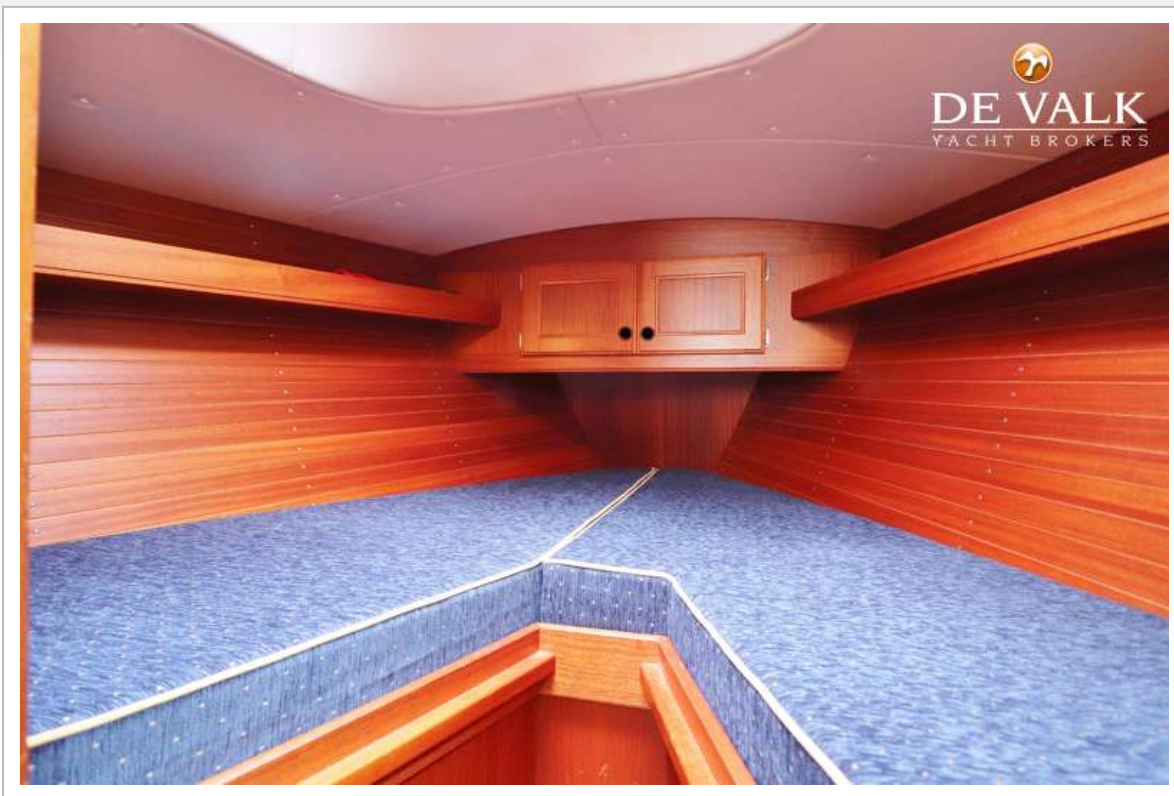
NAJAD 330



NAJAD 330



NAJAD 330



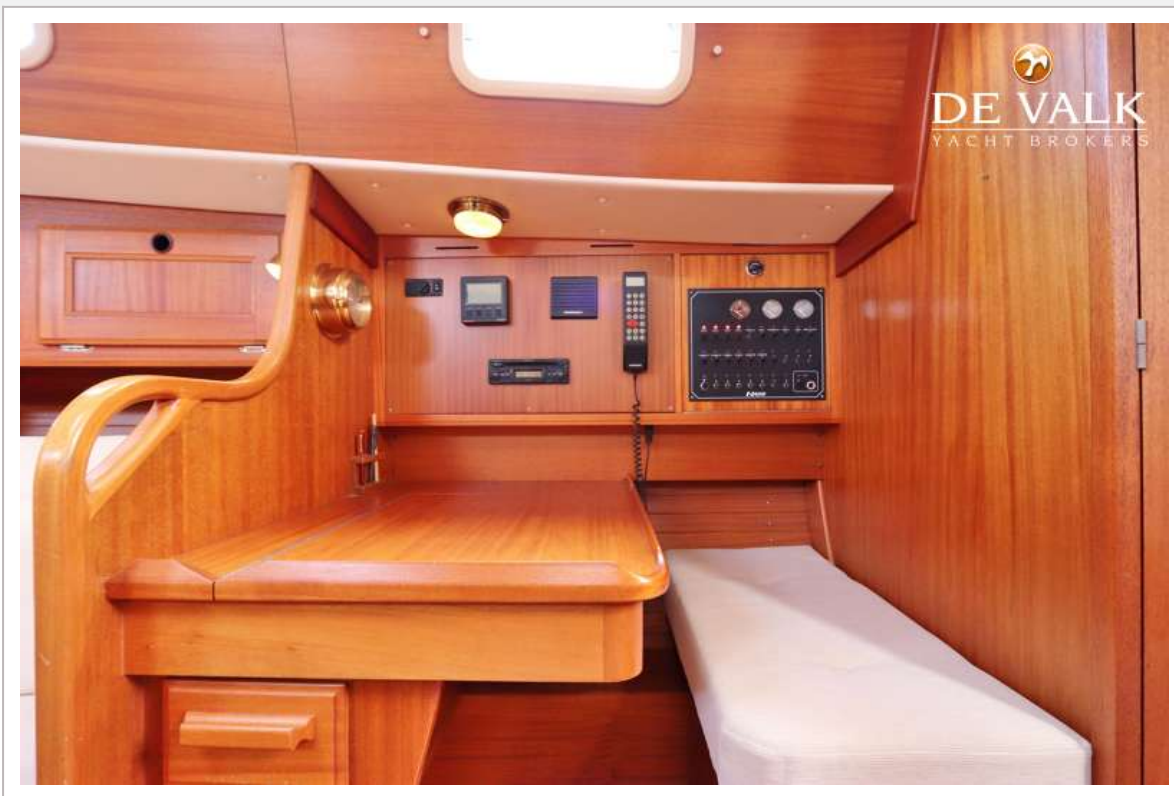
NAJAD 330



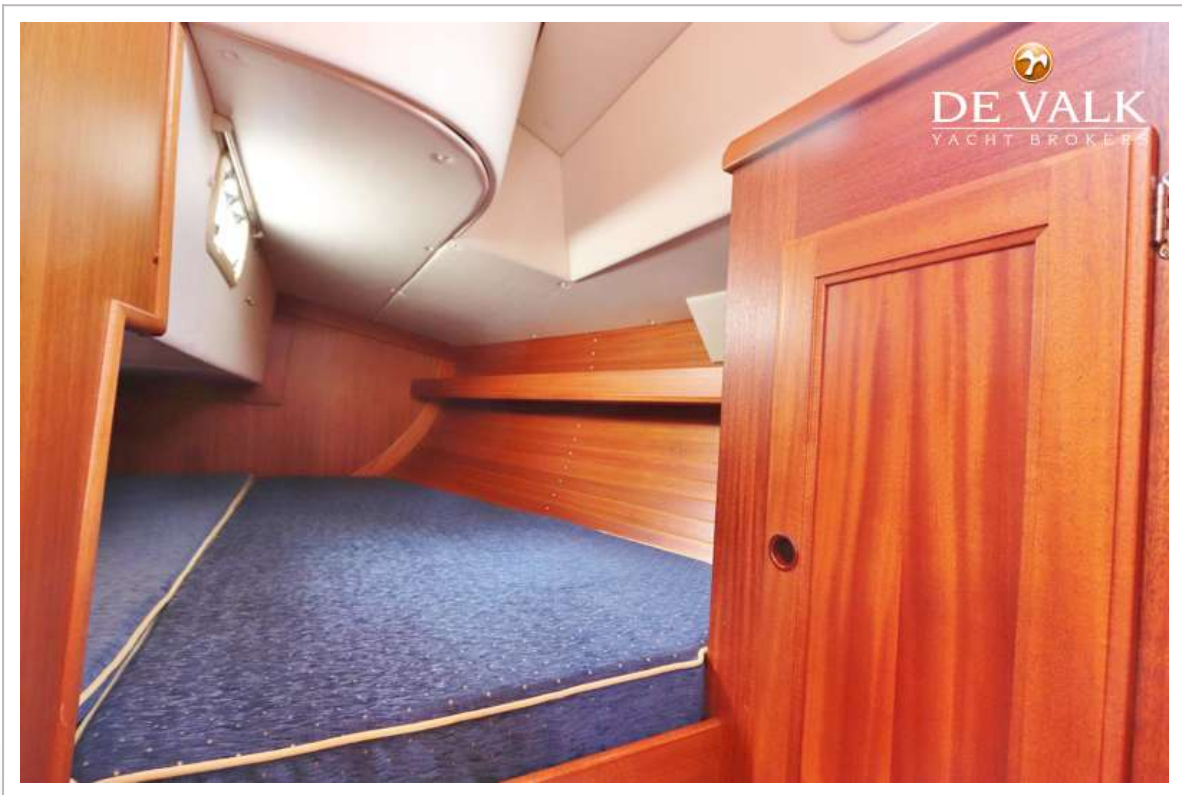
NAJAD 330



NAJAD 330



NAJAD 330



NAJAD 330

