



DE VALK
YACHT BROKERS



VRI-JON CONTESSA 40



DE VALK
YACHT BROKERS

VRI-JON CONTESSA 40

BROKER'S COMMENTS

Vri-Jon 40 Contessa "Gaudi" have had many upgrades in 2014: new grey hull paint (RAL 7016), new antifouling, new batteries, new upholstery inside and a new heavy duty quality sprayhood with bimini! "Gaudi" is very well equipped and waiting for a new owner. Ready to go!

Arne Doodeman

SPECIFICATIONS

Dimensions	12.10 x 3.80 x 1.18 (m)	Builder	Vri-Jon Ossenzijl
Built	2005	Cabins	2
Material	Steel	Berths	4
Engine(s)	1 x Yanmar 4JH3-HTE diesel	Hp/Kw	101.00 (hp), 74.24 (kw)
Asking price	sold (VAT)	Lying	at sales office

CONTACT

Sales office	De Valk Sneek	Telephone	+31 (0)515 42 80 30
Address	Zwolsmanweg 7 8606 KC Sneek NL	E-mail	sneek@devalk.nl

DISCLAIMER

These particulars are given in good faith as supplied but cannot be guaranteed.



GENERAL

Model	VRI-JON CONTESSA 40
Type	motor yacht
LOA (m)	12,10
Beam (m)	3,80
Draft (m)	1,18
Air draft (m)	2,70
Year built	2005
Builder	Vri-Jon Ossenzijl
Country	The Netherlands
Displacement (t)	12
CE norm	C
Hull material	steel
Hull colour	grey New sprayed (2014)
Hull shape	hard chine
Superstructure material	steel
Deck material	steel
Deck finish	anti-slip paint
Antifouling (year)	2014
Window frame	aluminium Gebo
Window material	glass
Radar arch	collapsible
Mast can be lowered	manual
Fuel tank (litre)	650
Freshwater tank (litre)	450
Blackwater tank (litre)	250
Wheel steering	hydraulic
Outside helm position	yes
More info on paintwork	hull painted in 2014

ACCOMMODATION



Cabins	2
Berths	4
Interior	teak
Layout	new upholstery (2014)
Floor	carpet (2014)
Aft deck	yes
Saloon	yes
Heating	diesel ducted hot air Eberspacher
Aft Cabin	yes
Dinette	yes
Dinette to convert into berth	yes
Galley	yes
Countertop	yes
Sink	stainless steel
Oven	Smev (2014)
Microwave	Whirlpool
Fridge	with freezer compartment Coolmatic
Hot water system	220V + engine
Water pressure system	yes
Owners cabin	French bed
Wardrobe	shelves and hanging
Bathroom	shared
Toilet	shared
Toilet system	electric
Wash basin	in the bathroom
Shower	shared
Guest cabin 1	bunk bed
Wardrobe	shelves and hanging
Extra info	new curtains (2014)

MACHINERY



No of engines	1
Make	Yanmar
Type	4JH3-HTE
HP	101,00
kW	74,24
Fuel	diesel
Maximum speed (kn)	10
Cruising speed (kn)	8
Engine hours	Ca. 950
Engine cooling system	freshwater heat exchanger
Drive	shaft
Engine controls	manual
Gearbox	hydraulic
Bowthruster	electric Cupa
Sternthruster	electric Cupa (2014)
Thrust bearing	yes
Propeller type	fixed
Propeller shaft material	stainless steel
Shaft lubrication	water
Electric bilge pump	yes
Electrical installation	yes
Batteries	(2014)
Battery charger/inverter	Victron combi
Shorepower	with cable

NAVIGATION

Electric compass	Simrad
Windset	Raymarine I40
Fish finder	in the Raymarine plotter
VHF	Raymarine
Rudder angle indicator	Simrad



Radar/plotter	Raymarine C120
Navtex	yes
AIS receiver	yes
AIS transponder	yes
Camera	rearview camera

EQUIPMENT

Sprayhood	heavy duty quality (2014) - gray outside, light inside
Bimini	heavy duty quality (2014) with back and sides
Bathing platform	yes
Boarding ladder	stainless steel
Transom door	yes
Deck shower	hot & cold water
Anchor	yes
Anchor chain	yes
Windlass	electrical With remote
Davits	stainless steel
Sea railing	stainless steel
Wiper	yes
Horn	yes
Fenders	yes
Mooring lines	yes
TracVision ball	Tracvision KVHN2
Radio-cd player	Pioneer radio/CD/DVD
Clock - barometer	yes
Fire extinguisher	yes
Extra info	fixed stairs to bathing platform with LED lighting



VRI-JON CONTESSA 40



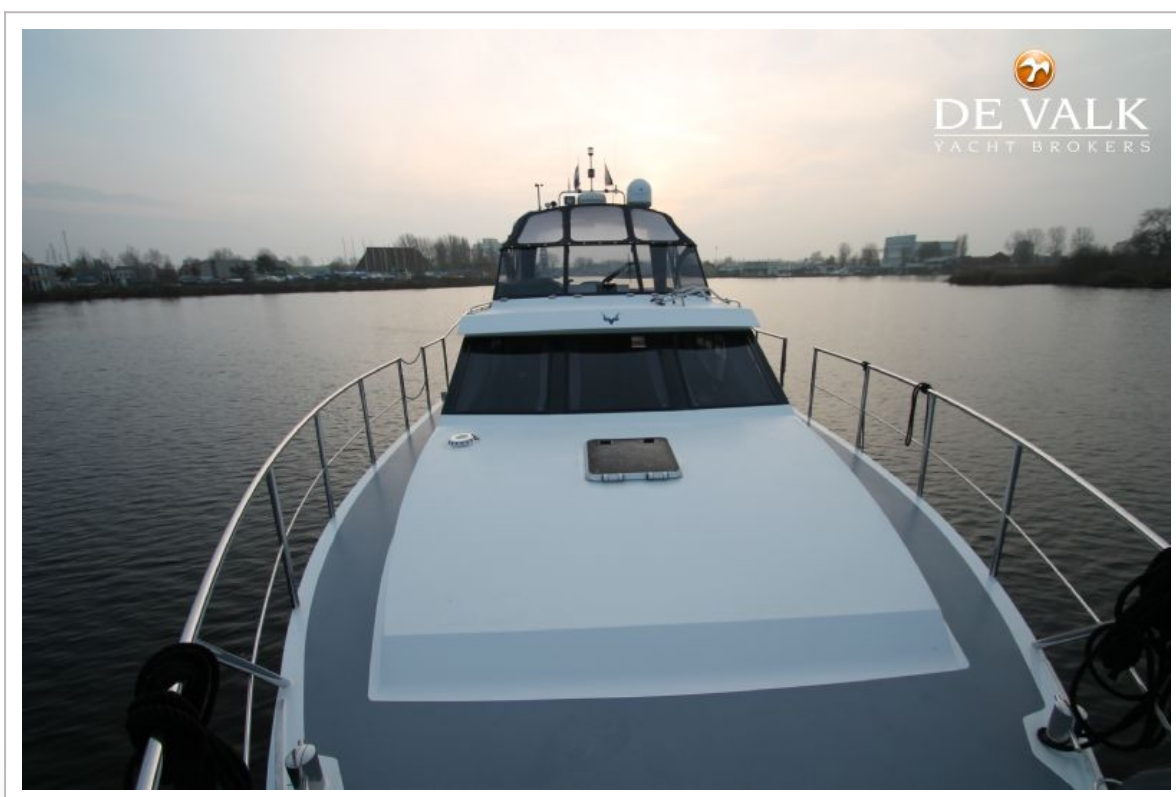
VRI-JON CONTESSA 40



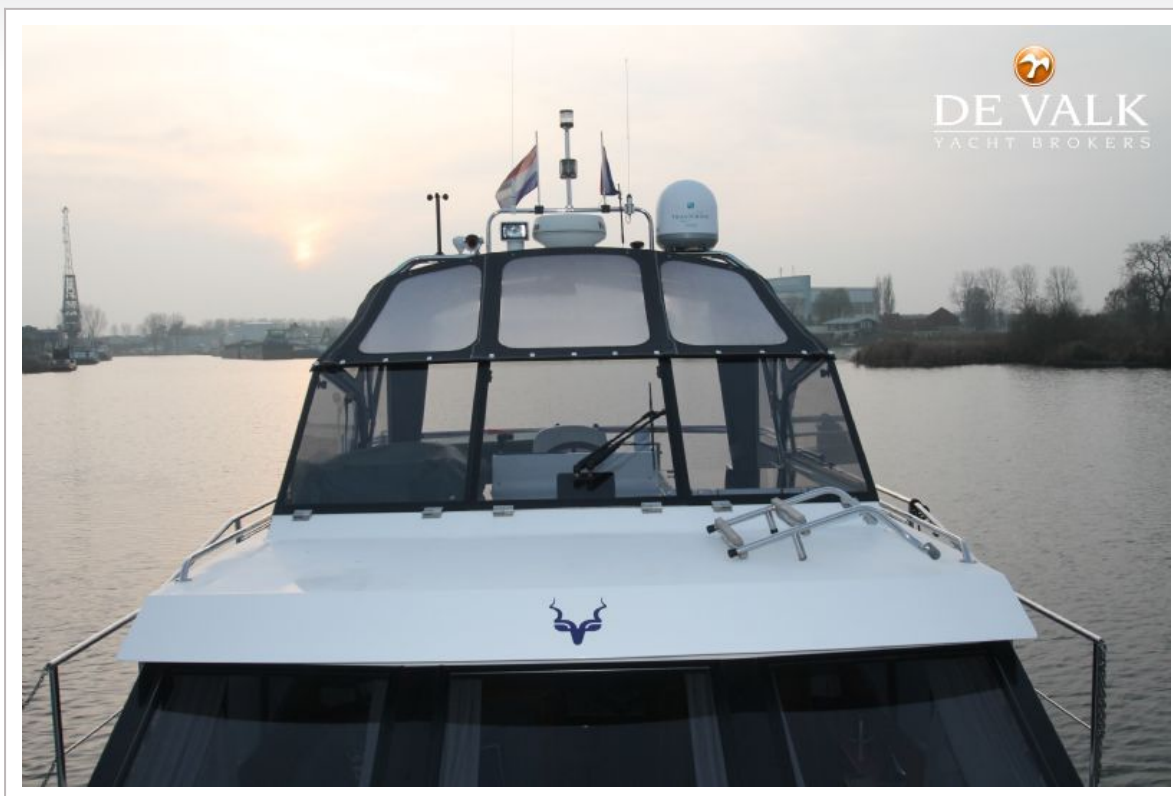
VRI-JON CONTESSA 40



VRI-JON CONTESSA 40



VRI-JON CONTESSA 40



VRI-JON CONTESSA 40



VRI-JON CONTESSA 40

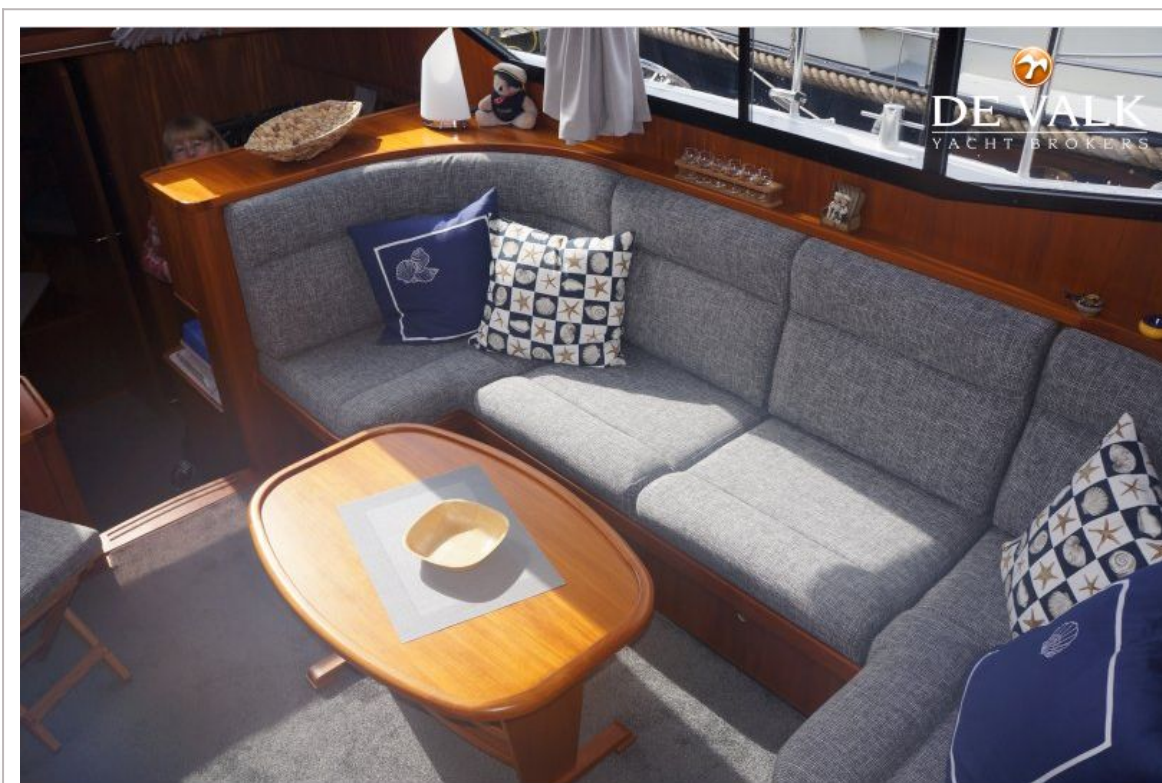


VRI-JON CONTESSA 40

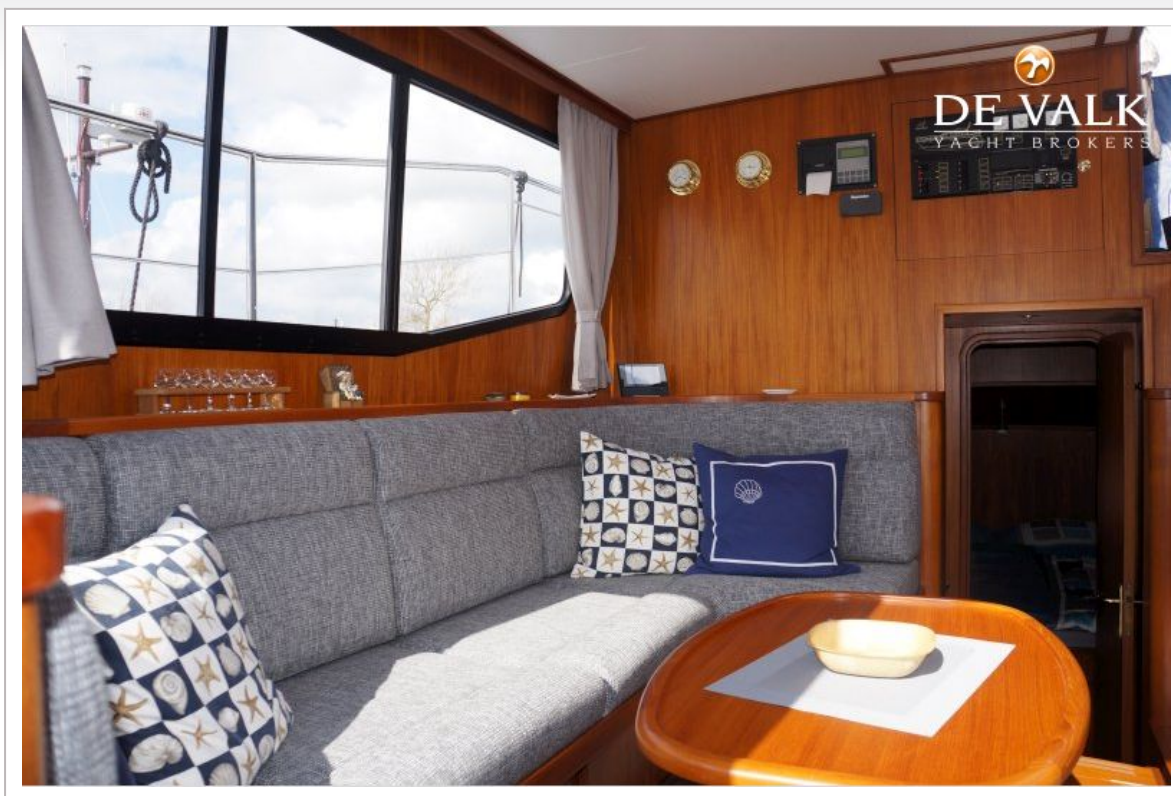




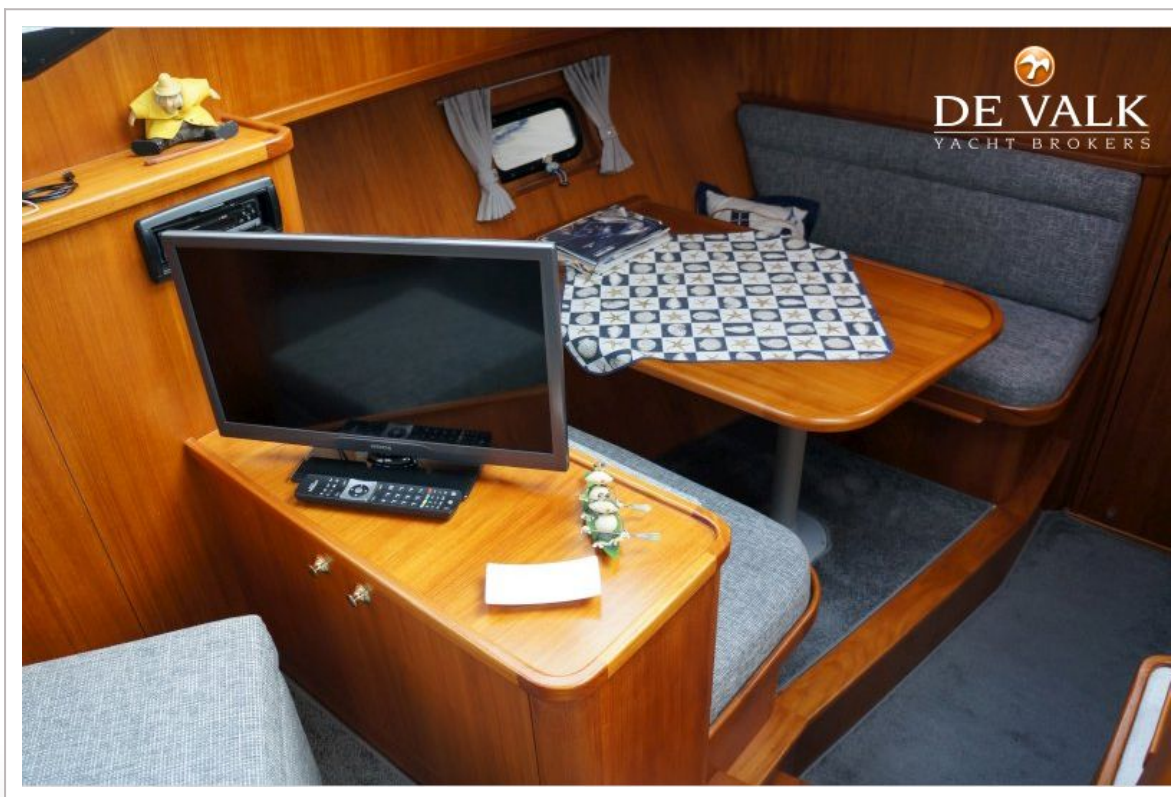
VRI-JON CONTESSA 40



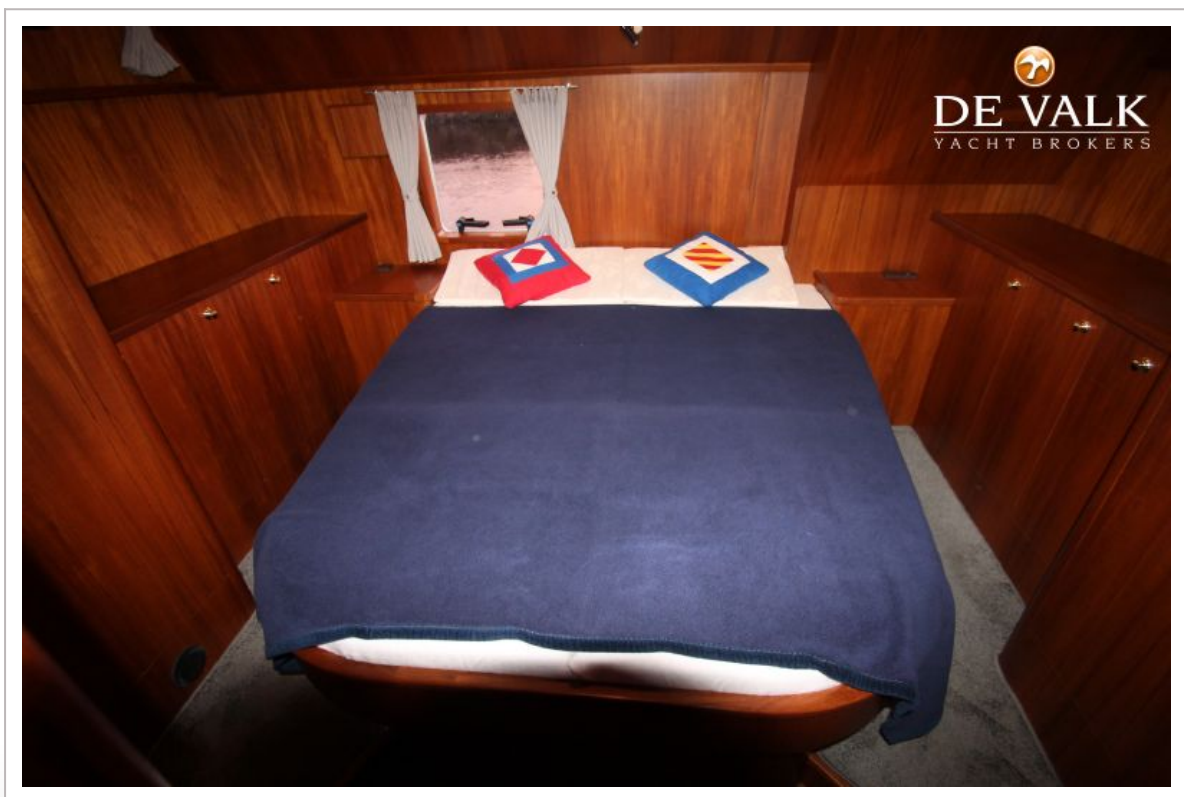
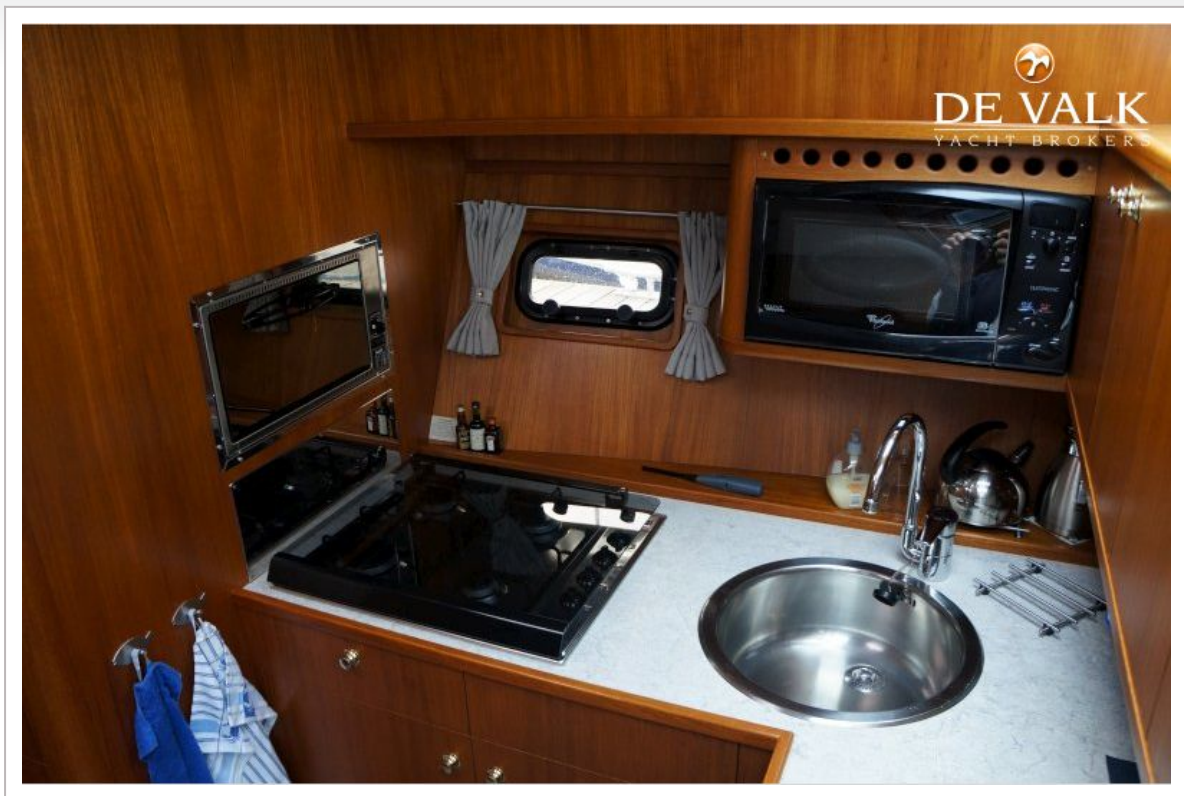
VRI-JON CONTESSA 40



VRI-JON CONTESSA 40



VRI-JON CONTESSA 40



VRI-JON CONTESSA 40





