



DE VALK  
YACHT BROKERS



JETTEN 50 MPC



DE VALK  
YACHT BROKERS

## BROKER'S COMMENTS

The Jetten 50 MPC's combination of the latest technologies and a unique design featuring unparalleled sleek lines make it unique in its class. Comfort, luxury and above all exclusivity, refined down to the smallest detail. The Jetten 50 MPC is the result of close cooperation between Jetten Shipyard and Vripack Naval architects. The 50 MPC offers you all the cruising convenience you could wish for, regardless of whether you are bound for the Mediterranean or Scandinavia. This twin engine Jetten 50 MPC has stabilizers, generator and much more.

*Hans Visser*

## SPECIFICATIONS

<b>Dimensions</b>	14.92 x 4.88 x 1.30 (m)	<b>Builder</b>	Jetten Shipyard
<b>Built</b>	2015	<b>Cabins</b>	3
<b>Material</b>	Steel	<b>Berths</b>	6
<b>Engine(s)</b>	2 x Yanmar 6BY3-160 diesel	<b>Hp/Kw</b>	2 x 160.00 (hp), 117.60 (kw)
<b>Asking price</b>	sold (VAT )	<b>Lying</b>	elsewhere / Not at sales office

## CONTACT

<b>Sales office</b>	De Valk Amsterdam B.V.	<b>Telephone</b>	+31 (0)35 5829014
<b>Address</b>	Marinaweg 8 (postal address) 1361 AC Almere NL	<b>E-mail</b>	amsterdam@devalk.nl

## DISCLAIMER

These particulars are given in good faith as supplied but cannot be guaranteed.



## GENERAL

Model	JETTEN 50 MPC
Type	motor yacht
LOA (m)	14,92
LWL (m)	14,25
Beam (m)	4,88
Draft (m)	1,30
Air draft (m)	3,45
Air draft min (m)	4,60
Headroom (m)	2,00
Year built	2015
Launched	2015
Builder	Jetten Shipyard
Country	The Netherlands
Designer	Vripack
Displacement (t)	25,5
CE norm	A
Hull material	steel
Hull colour	blue
Hull thickness (mm)	5
Hull shape	multi hard chine
Keel type	box keel
Superstructure material	steel
Superstructure (mm)	4
Deck plate thickness (mm)	4
Rubbing strake	rubber
Deck material	steel
Deck finish	synthetic teak
Superstructure deck finish	non-skid paint
Cockpit deck finish	synthetic teak
Dorades	yes



<b>Window frame</b>	Glued
<b>Window material</b>	double glazing
<b>Deckhatch</b>	yes
<b>Portholes</b>	aluminium
<b>Insulation</b>	foam
<b>Mast can be lowered</b>	manual
<b>Fuel tank (litre)</b>	steel 2250
<b>Level indicator (fuel tank)</b>	yes
<b>Freshwater tank (litre)</b>	stainless steel 820
<b>Level indicator (freshwater)</b>	yes
<b>Blackwater tank (litre)</b>	stainless steel 350
<b>Level indicator (blackwater)</b>	yes
<b>Blackwater tank extraction</b>	deck extraction + pump
<b>Greywater tank (litre)</b>	Blackwatertank can also be used for greywater
<b>Wheel steering</b>	powersteer
<b>Inside helm position</b>	yes
<b>Emergency tiller</b>	yes
<b>More info on hull</b>	The roof of the superstructure in in GRP for added stability
<b>More info on paintwork</b>	Alex seal two tone

## ACCOMMODATION

<b>Cabins</b>	3
<b>Berths</b>	6
<b>Interior</b>	cherry
<b>Layout</b>	Owners version
<b>Floor</b>	parquet Vinyl parquet wheelhouse, carpet downstairs
<b>Aft deck</b>	yes
<b>Pilot house/deck saloon</b>	yes
<b>Headroom saloon (m)</b>	2,02
<b>Sliding roof</b>	electric Webasto king size
<b>Heating</b>	central heating Kabola



# JETTEN 50 MPC

Navigation center	At the helm
Opening door to cockpit	In 4 folding parts full opening
Galley	In total 2,20 working surface
Countertop	corian
Sink	stainless steel Double
Cooker	electric 4 burner
Microwave/oven combi	yes
Fridge	140 liter
Freezer	In the lazareth
Hot water system	on central heating
Water pressure system	electrical
Owners cabin	French bed Central sleeper
Bed length (m)	200 x 170
Wardrobe	walk-in closet
Bathroom	en suite
Toilet	en suite
Toilet system	electric
Wash basin	in the bathroom
Shower	en suite
Guest cabin 1	French bed Vip Cabin
Bed length (m)	200 x 170
Wardrobe	hanging/drawers/shelves
Bathroom	shared
Toilet	shared
Toilet system	electric
Wash basin	at the toilet
Shower	shared
Guest cabin 2	bunk bed Easy convert cabin
Bed length (m)	200 x 80
Wardrobe	hanging and shelves
Bathroom	shared
Toilet	shared



Toilet system	electric
Wash basin	at the toilet
Shower	shared
Washing machine/dryer combi	Miele
Extra info	Large storage lazareth with acces to engineroom aft

## MACHINERY

No of engines	2
Make	Yanmar
Type	6BY3-160
HP	160
kW	117,60
Fuel	diesel
Year installed	2015
Maximum speed (kn)	11
Cruising speed (kn)	9
Consumption (l/hr)	30 l @ 8,5 kn
Engine hours	2008
Engine cooling system	freshwater heat exchanger
Drive	shaft
Shaft seal	yes
Engine controls	electrical
Gearbox	mechanical
Bowthruster	electric 24 V 225 kgf with dedicated batteries
Sternthruster	24 V 225 kgf with dedicated batteries
Propeller type	fixed
Propeller blades	4 blades
Propeller shaft material	stainless steel
Shaft lubrication	water
Manual bilge pump	3 x
Electric bilge pump	3 x



<b>Bilge alarm</b>	yes
<b>Electrical installation</b>	12 & 24 V DC and 240 V AC
<b>Generator</b>	silent separator Whisper
<b>Batteries</b>	5 battery banks (service, bow- & stern , engines and genset)
<b>Start battery</b>	2 x red top
<b>Service battery</b>	12 x 2 Volt cells total app. 1000 Amp. 24 V. service
<b>Generator battery</b>	Red top
<b>Bowthruster battery</b>	2 x 12 V 200 AHfor 24 V 200 AH maintenance free
<b>Sternthruster battery</b>	2 x 12 V 200 AHfor 24 V 200 AH maintenance free
<b>Battery monitor</b>	SafeCurrent (Remote mobile Voltage And Location Control)
<b>Battery charger</b>	3 x 24 V 10 Amp for start batteries and trusters
<b>Battery charger/inverter</b>	Victron Quatro 24 V 100Ah 5000 W
<b>Diode battery combiners</b>	yes
<b>Shorepower</b>	with cable
<b>Insulation transformer</b>	Shore power diodes
<b>Stabilizers</b>	Rotoswing

## NAVIGATION

<b>Electric compass</b>	Raymarine
<b>Depth sounder</b>	Raymarine
<b>Log</b>	Raymarine
<b>Windset</b>	Raymarine
<b>Repeater</b>	2 x Raymarine ST 60
<b>VHF</b>	Raymarine
<b>Autopilot</b>	Raymarine
<b>Rudder angle indicator</b>	Raymarine
<b>Radar</b>	Raymarine
<b>GPS</b>	Raymarine
<b>Radar/GPS/plotter</b>	Raymarine E 120
<b>PC connection</b>	USB chargers
<b>Electronic chart(s)</b>	1 Gold chart



AIS transponder

Raymarine

Camera

Wifi engine room

## EQUIPMENT

Cockpit cover

With removable panels

Cockpit cushions

yes

Cockpit table

Fixed

Cockpit chairs

Integrated cockpit seat

Bathing platform

yes

Boarding ladder

stainless steel

Transom door

yes

Deck shower

yes

Anchor

CQR Plough 50 lb Stainless

Anchor chain

30 meter

Capstan

Electric

Deck wash

yes

Sea railing

stainless steel

Grab rail (superstructure)

stainless steel

Railing side opening gates

yes

Pushpit

yes

Pulpit

yes

Life raft

valise (or bag)

Life raft (pers)

4

Last life raft survey

2018

Wiper

3 x

Horn

yes

Fenders

8 x

Mooring lines

8 x

Spare parts

yes

Tools

yes

TV

yes



TracVision ball	Raymarine
iPod connection	yes
Speakers in salon	yes
Clock - barometer	yes
Fire extinguisher	yes
Extinguisher in engine room	yes



# JETTEN 50 MPC



# JETTEN 50 MPC



# JETTEN 50 MPC



# JETTEN 50 MPC



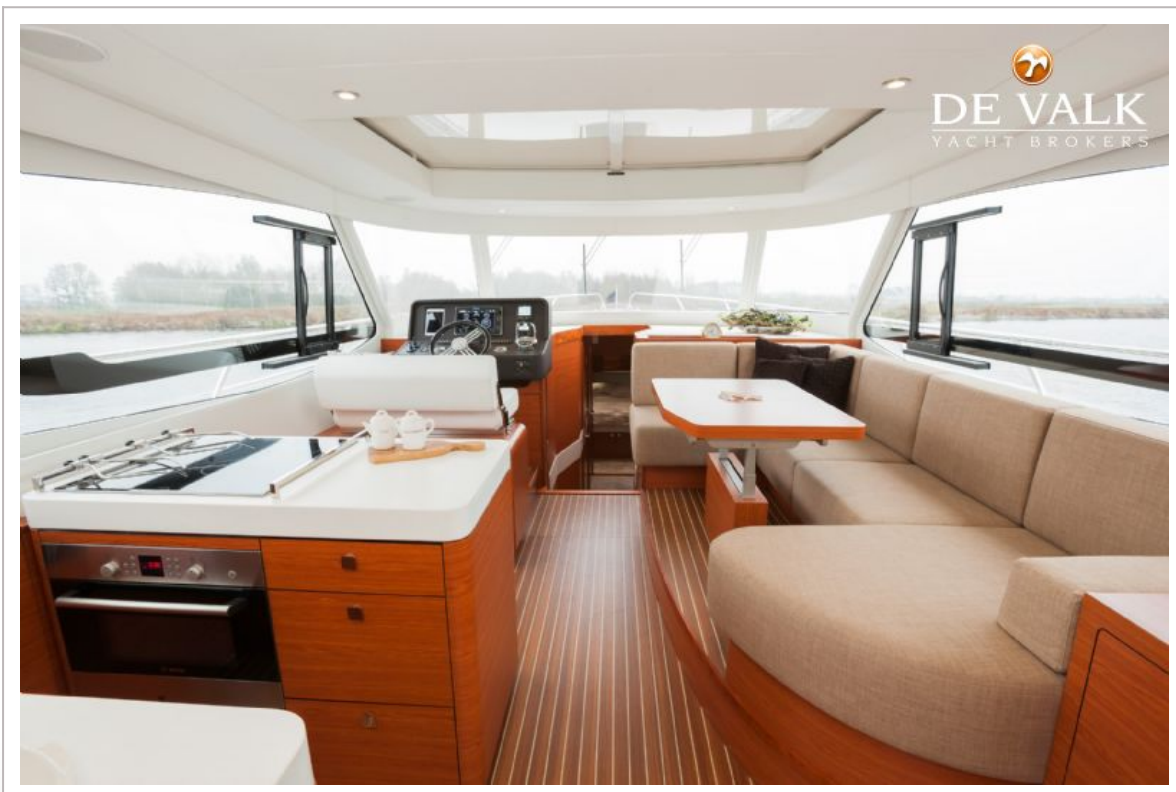
# JETTEN 50 MPC



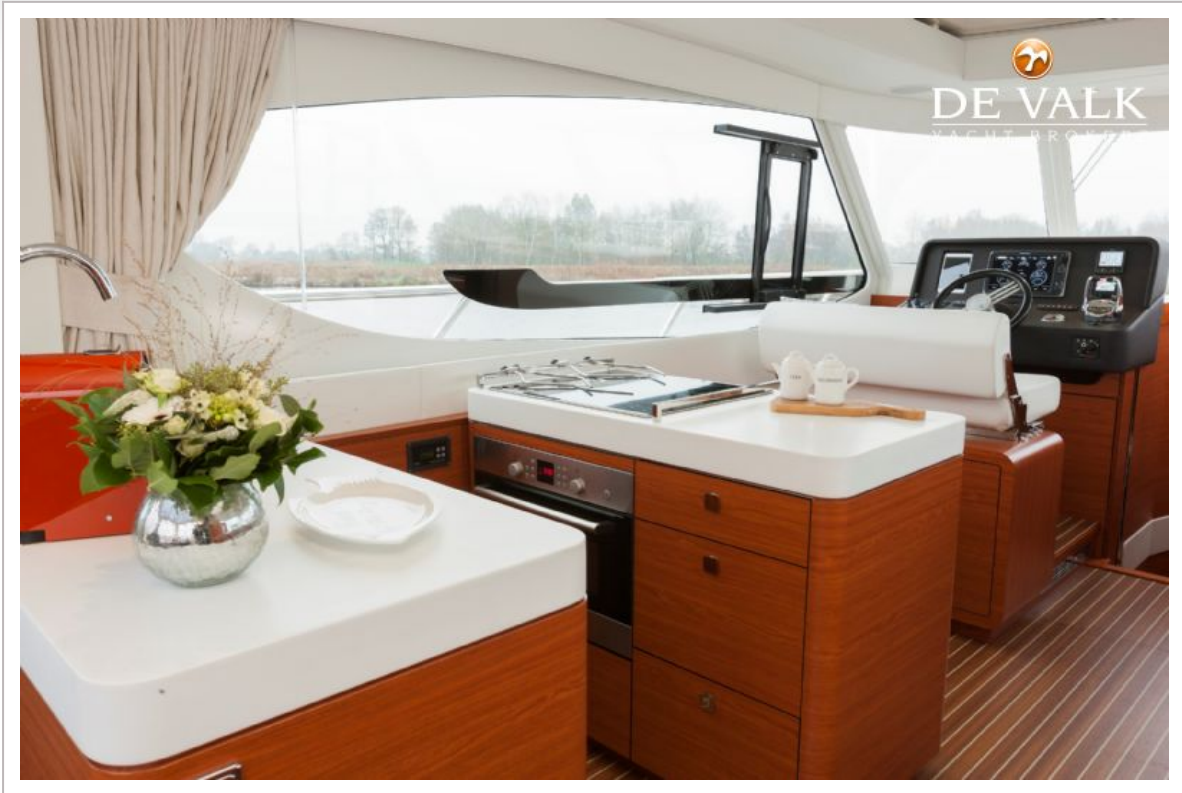
JETTEN 50 MPC



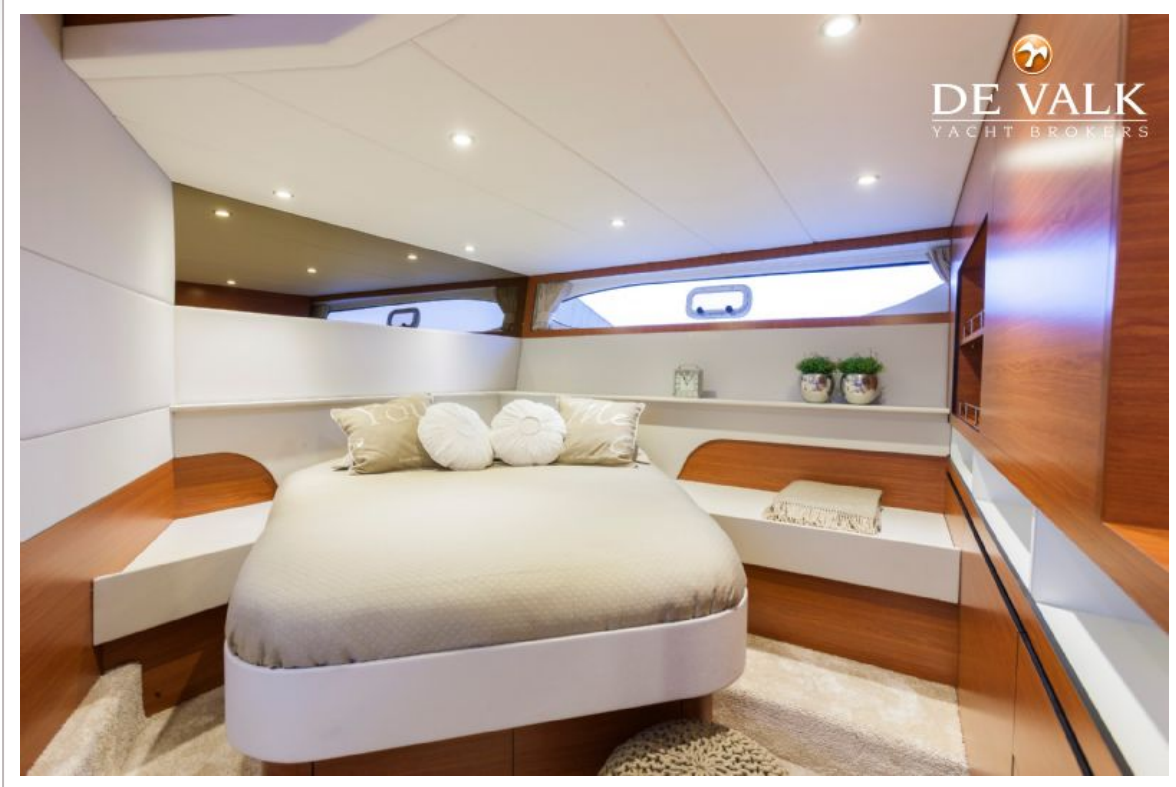
# JETTEN 50 MPC



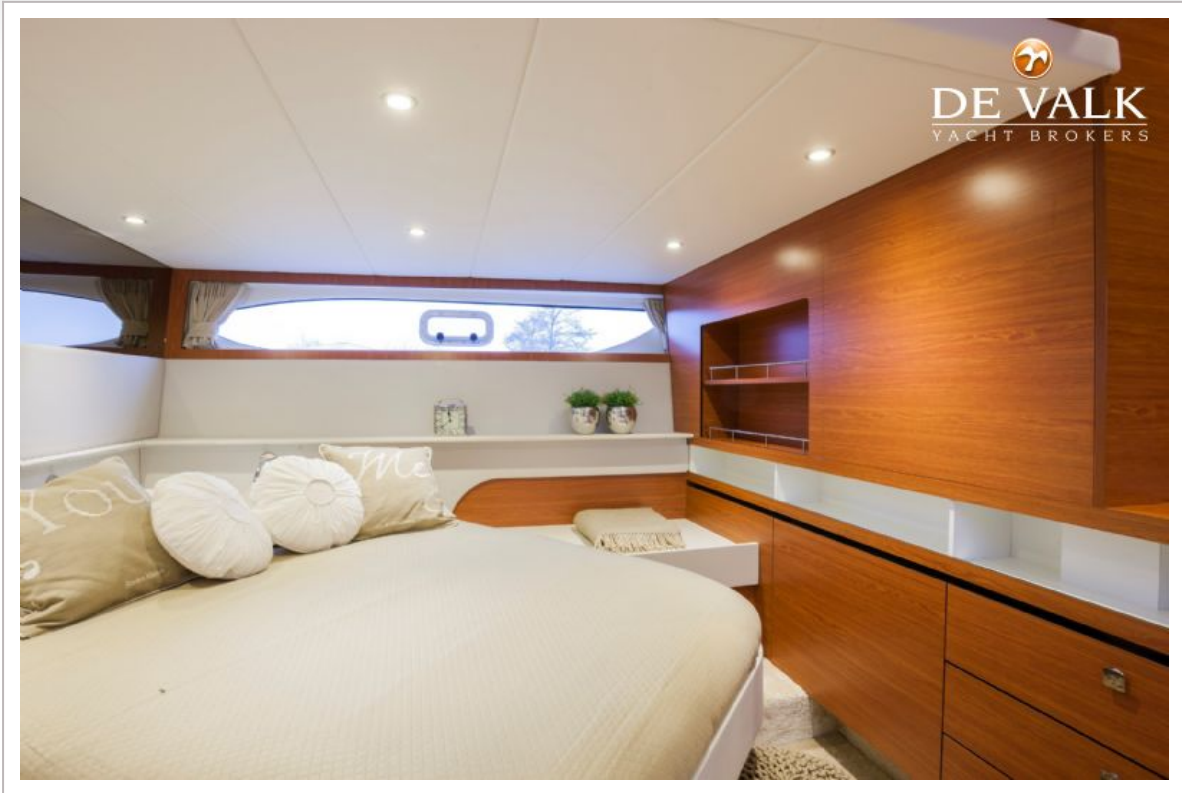
JETTEN 50 MPC



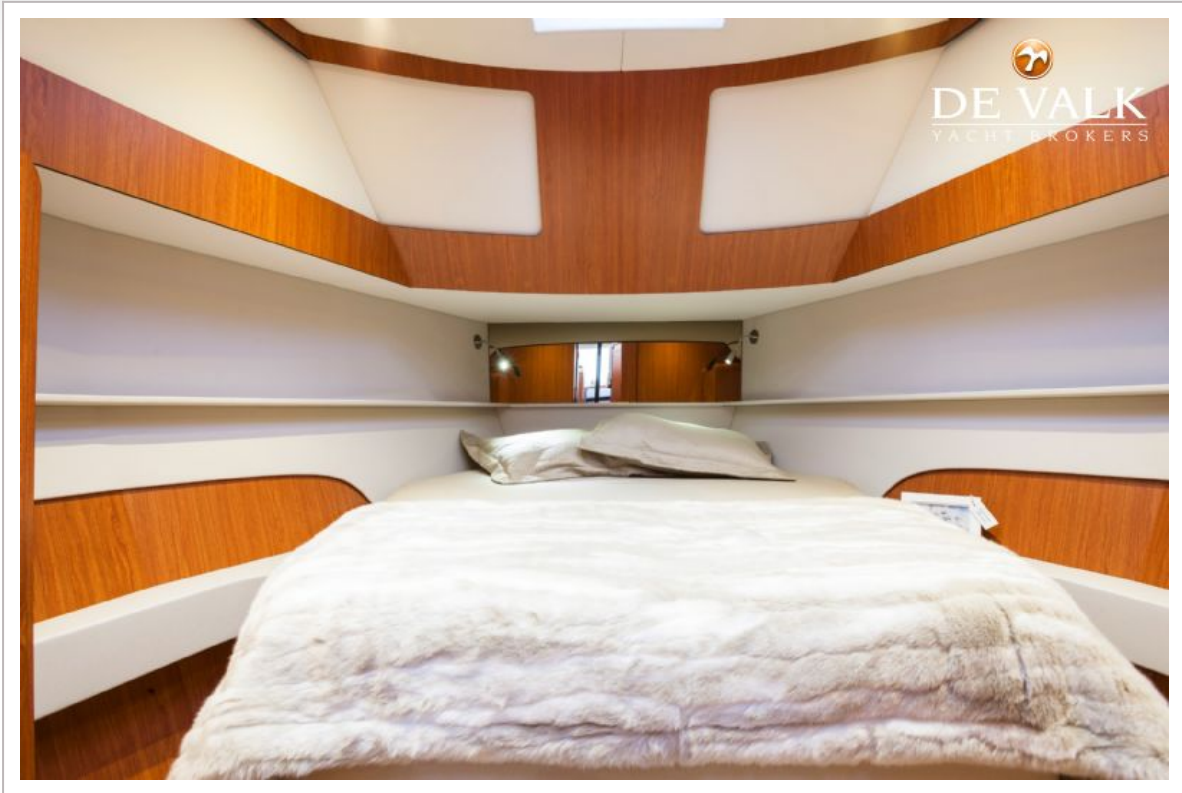
# JETTEN 50 MPC

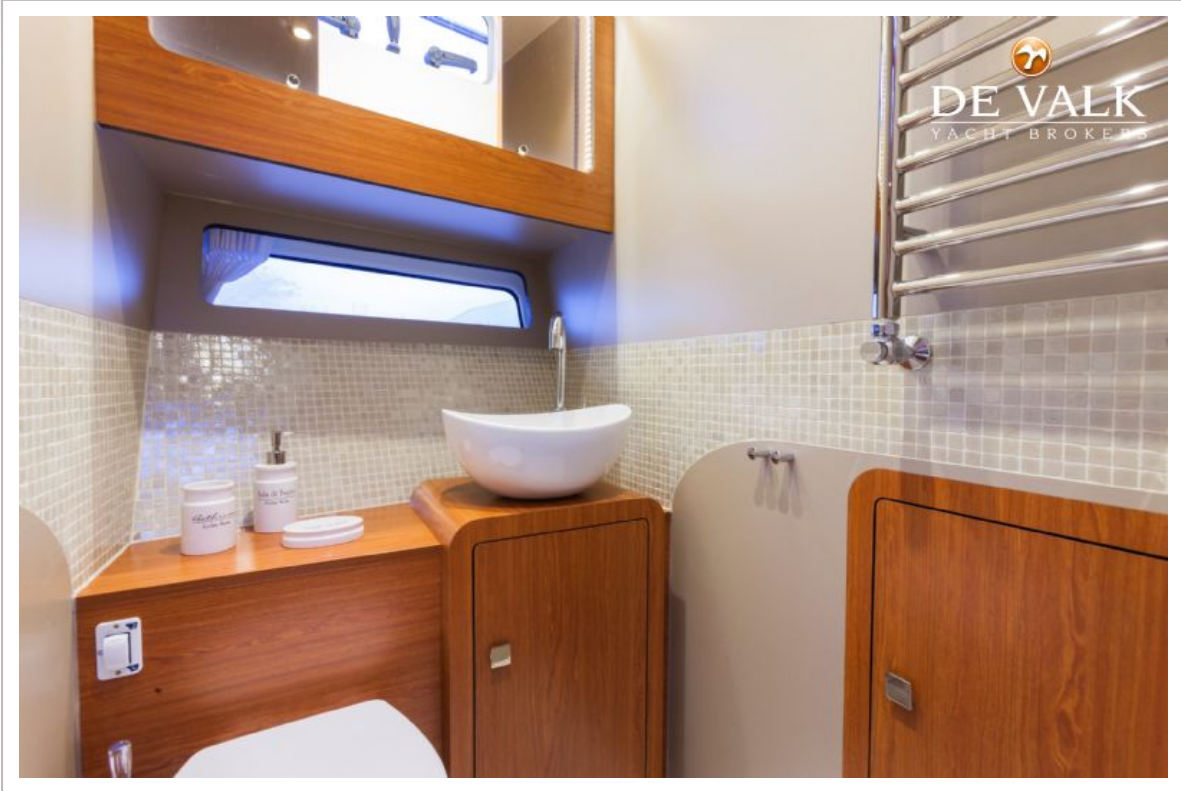


JETTEN 50 MPC



JETTEN 50 MPC





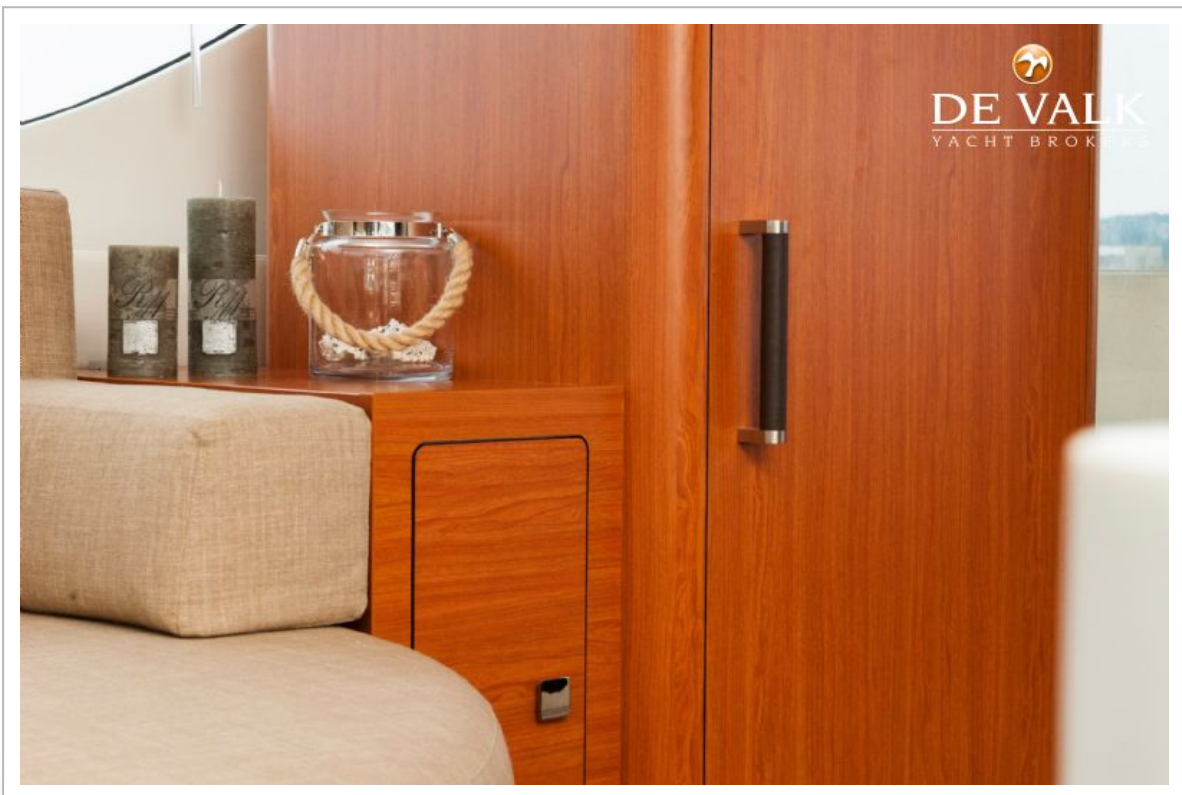
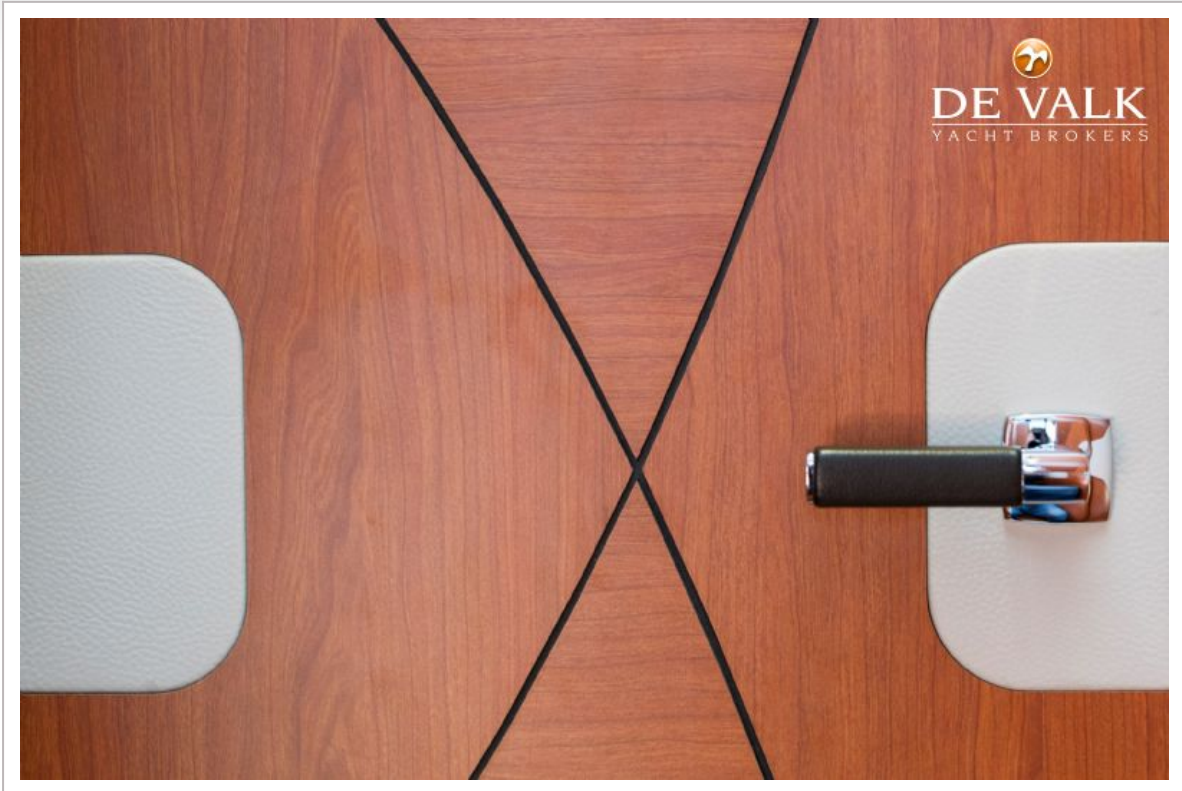
JETTEN 50 MPC



# JETTEN 50 MPC



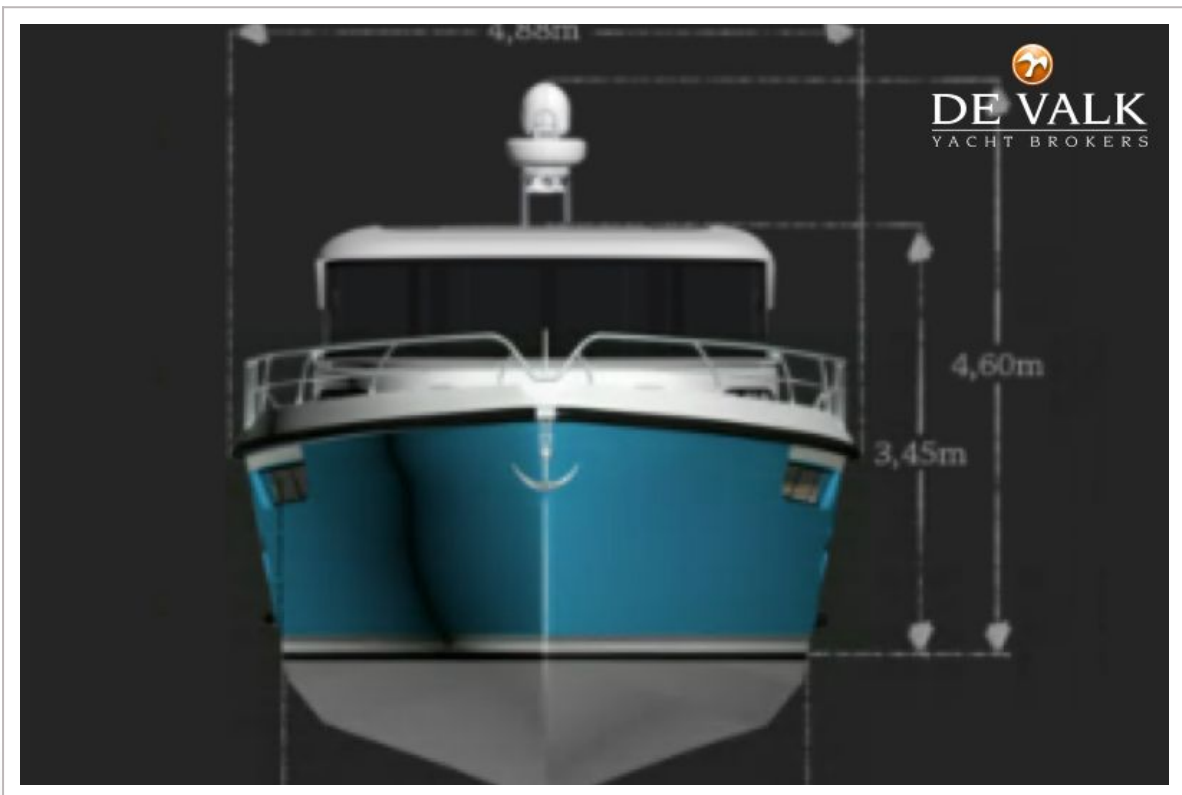
# JETTEN 50 MPC



# JETTEN 50 MPC



# JETTEN 50 MPC



JETTEN 50 MPC

