



DE VALK
YACHT BROKERS



BOARNCRUISER 50 CLASSIC LINE



DE VALK
YACHT BROKERS

BOARNCRUISER 50 CLASSIC LINE

BROKER'S COMMENTS

The Boarncruiser 50 Classic Line can bring you anywhere in Europe. This yacht with a 3 cabin layout and two separate bathrooms and all possible comfort is fitted with a 225 HP 6 cylinder Perkins Sabre diesel engine, hydraulic bow and stern thruster and Kabola central heating. Her steel hull and GRP superstructure result in optimal weight balance and greater seaworthiness for safe and comfortable cruising. She has CE-A. Well maintained and kept in shape by her present owner, lots of renewals and improvements.

Pieter Bosma

SPECIFICATIONS

Dimensions	14.95 x 4.60 x 1.25 (m)	Builder	Jachtwerf De Boarnstream
Built	2003	Cabins	3
Material	Steel	Berths	6
Engine(s)	1 x Perkins M225TI33 diesel	Hp/Kw	225.00 (hp), 165.38 (kw)
Asking price	sold (VAT)	Lying	contact Sneek

CONTACT

Sales office	De Valk Sneek	Telephone	+31 (0)515 42 80 30
Address	Zwolsmanweg 7 8606 KC Sneek NL	E-mail	sneek@devalk.nl

DISCLAIMER

These particulars are given in good faith as supplied but cannot be guaranteed.



BOARNCRUISER 50 CLASSIC LINE

GENERAL

Model	BOARNCRUISER 50 CLASSIC LINE
Type	motor yacht
LOA (m)	14,95
Beam (m)	4,60
Draft (m)	1,25
Air draft (m)	2,75
Headroom (m)	2,00
Year built	2003
Builder	Jachtwerf De Boarnstream
Country	The Netherlands
Designer	Jachtwerf De Boarnstream
Displacement (t)	27
CE norm	A
Hull material	steel
Hull colour	blue Awl Grip
Hull thickness (mm)	5/6
Hull shape	multi hard chine
Keel type	Keelplate 10 mm
Bilge keels	yes
Superstructure material	GRP
Rubbing strake	fender rope
Deck material	steel
Deck finish	teak
Superstructure deck finish	non-skid paint 2016
Antifouling (year)	2016
Window frame	aluminium
Window material	double glazing Thermic Line
Deckhatch	yes
Portholes	aluminium
Insulation	yes



BOARNCRUISER 50 CLASSIC LINE

Mast can be lowered	electric
Fuel tank (litre)	steel 1200 (2x 600)
Level indicator (fuel tank)	Wempe
Freshwater tank (litre)	stainless steel 1200 (2x 600)
Level indicator (freshwater)	Wempe
Blackwater tank (litre)	stainless steel 400
Blackwater tank extraction	deck extraction + pump
Wheel steering	powersteer
Inside helm position	yes
Outside helm position	powersteer
Emergency tiller	emergency steering in accordance with CE norm
More info on hull	entire boat polished 2017
More info on paintwork	AWL Grip paint 2 coats
Extra info	heavy duty stainless steel docking bollards on bow, stern, midships and swim platform
Extra info	heavy duty insulation on hull, in aft cabin over propeller and in engine room
Extra info	windows sunreflecting, tinted, heavy duty teak entrance door with double glass

ACCOMMODATION

Cabins	3
Berths	6
Interior	teak
Floor	teak and holly
Aft deck	yes
Deck saloon	yes
Saloon	yes
Headroom saloon (m)	2,00
Heating	central heating Kabola B12 Tap
Aft Cabin	yes
Dinette	yes



BOARNCRUISER 50 CLASSIC LINE

Dinette to convert into berth	yes
Opening door to aft deck	Teak
Galley	extra cupboards in galley (2014)
Countertop	Duropol
Sink	stainless steel Double
Cooker	electric 4 burner Pelgrim
Extractor	Ignis
Microwave/oven combi	LG Solar DOM
Fridge	218 Ltr.
Freezer	2 layers
Hot water system	on central heating
Water pressure system	electrical New pump 2017
Dishwasher	Atag
Owners cabin	French bed Aft, Queen size
Bed length (m)	with memory matrass 2,10
Wardrobe	hanging/drawers/shelves Extra Large wall cabinets (2014)
Bathroom	en suite
Toilet	en suite
Toilet system	electric
Wash basin	yes
Shower	en suite
Guest cabin 1	bunk bed
Bed length (m)	2,10
Wardrobe	hanging
Bathroom	
Guest cabin 2	French bed Queen size
Bed length (m)	2,10
Wardrobe	yes
Bathroom	en suite
Toilet	en suite
Toilet system	electric
Wash basin	in the bathroom



Washing machine/dryer combi

Siemens Wash & Dry 6143

Extra info

all floors covered with high quality carpet

Extra info

in the aftcabin large, separate shower room with teak bench Queen size, and integrated Siemens washer/Dryer

MACHINERY

No of engines

1

Make

Perkins

Type

M225Ti33

HP

225

kW

165.38

Fuel

diesel

Year installed

2003

Maximum speed (kn)

10

Cruising speed (kn)

8

Engine hours

2860

Engine cooling system

freshwater heat exchanger

Drive

shaft

Shaft seal

yes

Engine controls

electrical Morse

Gearbox

hydraulic PRM

Bowthruster

hydraulic 230 Kgf

Sternthruster

hydraulic 230 Kgf

Exhaust

watercooled

Thrust bearing

Python Drive replaced 2017

Propeller type

fixed

Propeller blades

4

Propeller shaft material

stainless steel

Shaft lubrication

water

Electric bilge pump

New 2016

Electrical installation

24/220V



BOARNCRUISER 50 CLASSIC LINE

Generator	wet exhaust Fisher Panda 10 Kva with new battery, fuel pump and sound iso
Batteries	yes
Start battery	new 2016
Service battery	all new 2016 6
Generator battery	1
Battery charger/inverter	Mastervolt Mass 24/4000-120 (2009)
Diode battery combiners	yes
Shorepower	with cable
Extra info	new Alternator on main engine (2016), Pre filter and water separator, additional double Racor fuel filters with vacuum gauge
Extra info	new intercooler for turbo (2016), Emergency lock in fuel pipe preventing reverse/over flow of fuel
Extra info	hydraulic system checked and 2 valves replaced (2016)

NAVIGATION

Electric compass	Raymarine ST60
Depth sounder/log	Raymarine ST60
VHF	Raymarine 240E Dualstation, Shipmate RS8300
Autopilot	Raymarine 6001+
Rudder angle indicator	On autopilot screen
Radar	2Kw 45 cm.
Plotter/GPS	inside Raymarine SL530 Inside
Radar/GPS/plotter	outside Raymarine C120
Navigation lights	yes
Searchlight	Remote controlled

EQUIPMENT

Fixed windscreen	yes
Sprayhood	New 2015
Cockpit cover	New 2015



BOARNCRUISER 50 CLASSIC LINE

Bimini	New 2015
Cockpit cushions	yes
Cockpit table	yes
Cockpit chairs	yes
Bathing platform	with teak grating
Boarding ladder	stainless steel
Deck shower	hot an cold water
Anchor	Danforth Stainless Steel 30 Kg
Anchor chain	40 meter, 10 mm
Windlass	Vetus with remote control
Davits	stainless steel
Davits controls	manual
Sea railing	stainless steel
Grab rail (superstructure)	yes
Railing side opening gates	yes
Wiper	3x in cockpit and 3x in saloon with washer 6x
Horn	air pressure
Fenders	yes
Mooring lines	yes
TV	new 2017, integrated in saloon furniture Samsung Flatscreen
Satellite	KVH Tracvision MZ
DVD player	en JVC Home Cinema system Pionier
Speakers in salon	yes
Clock - barometer	yes
Fire extinguisher	yes
Extinguisher in engine room	Replaced 2016
Extra info	boat has been stored inside in heated storage every winter
Extra info	Personal items are not included. A list of inventory items included in the sale will be provided as part of a purchase agreement.

RIGGING



Extra info

yes

Extra info

yes



BOARNCRUISER 50 CLASSIC LINE



BOARNCRUISER 50 CLASSIC LINE



BOARNCRUISER 50 CLASSIC LINE



BOARNCRUISER 50 CLASSIC LINE



BOARNCRUISER 50 CLASSIC LINE



BOARNCRUISER 50 CLASSIC LINE



BOARNCRUISER 50 CLASSIC LINE



BOARNCRUISER 50 CLASSIC LINE



BOARNCRUISER 50 CLASSIC LINE



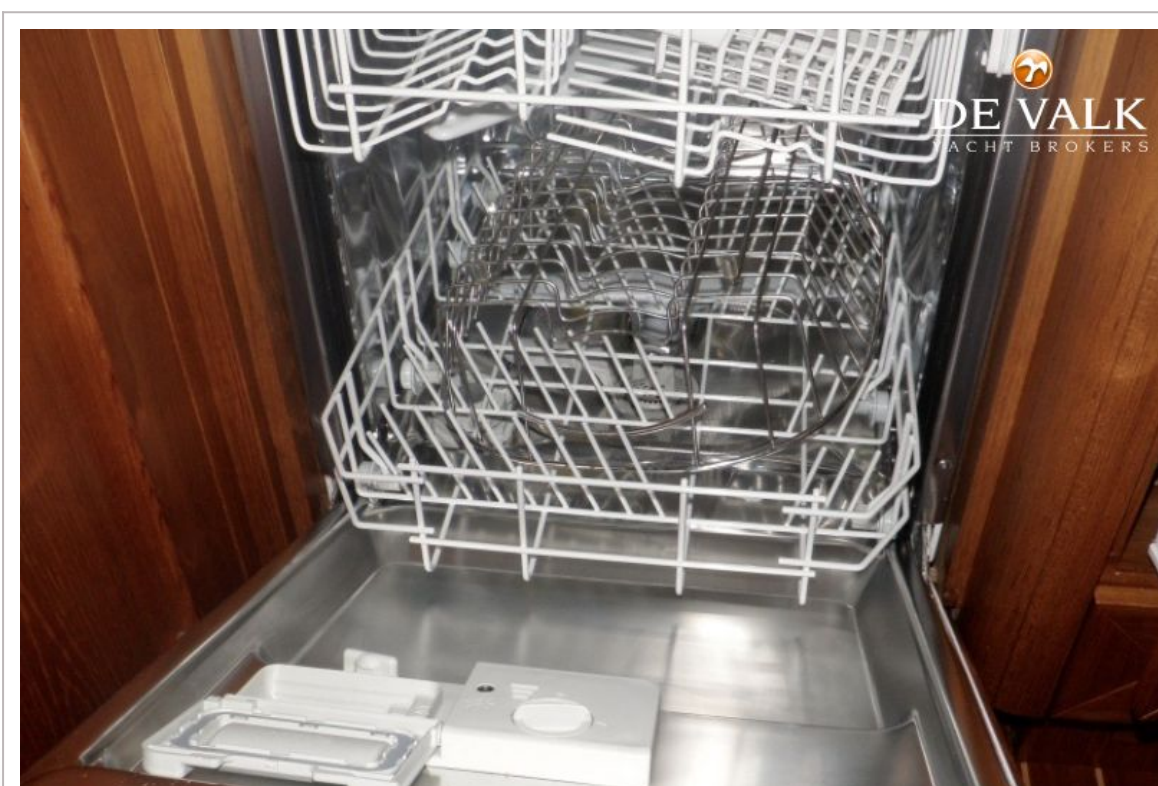
BOARNCRUISER 50 CLASSIC LINE



BOARNCRUISER 50 CLASSIC LINE



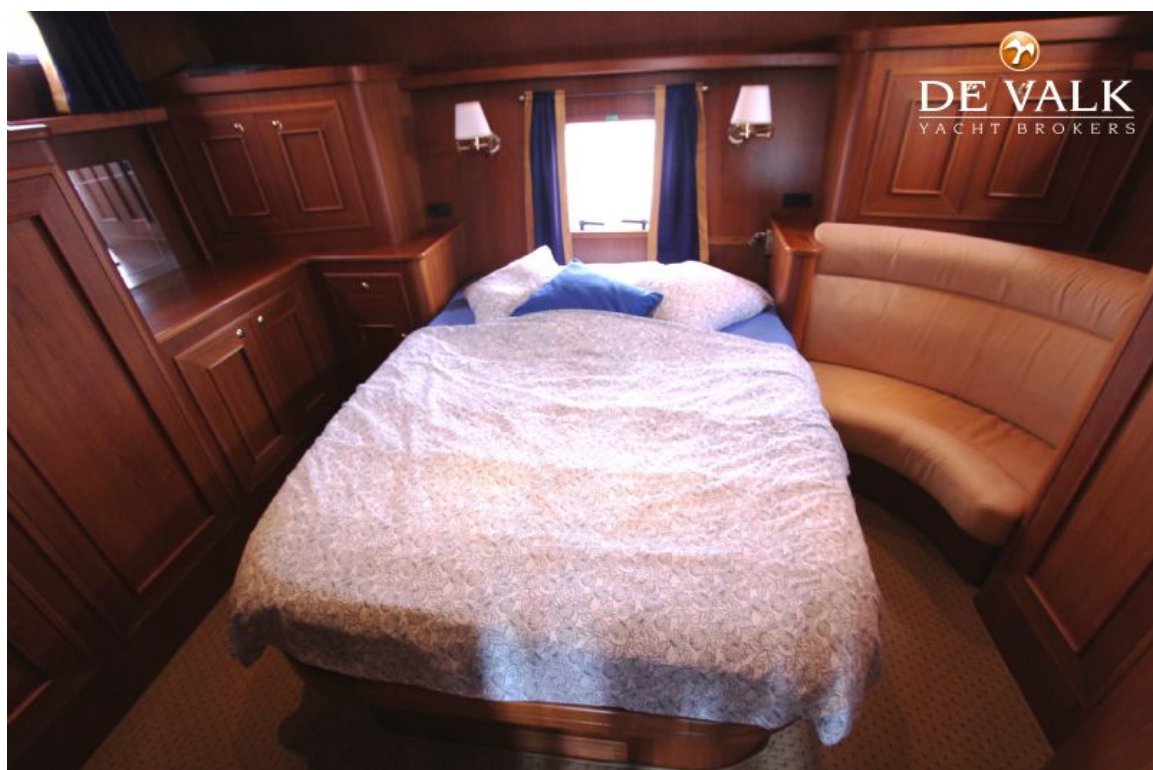
BOARNCRUISER 50 CLASSIC LINE



BOARNCRUISER 50 CLASSIC LINE



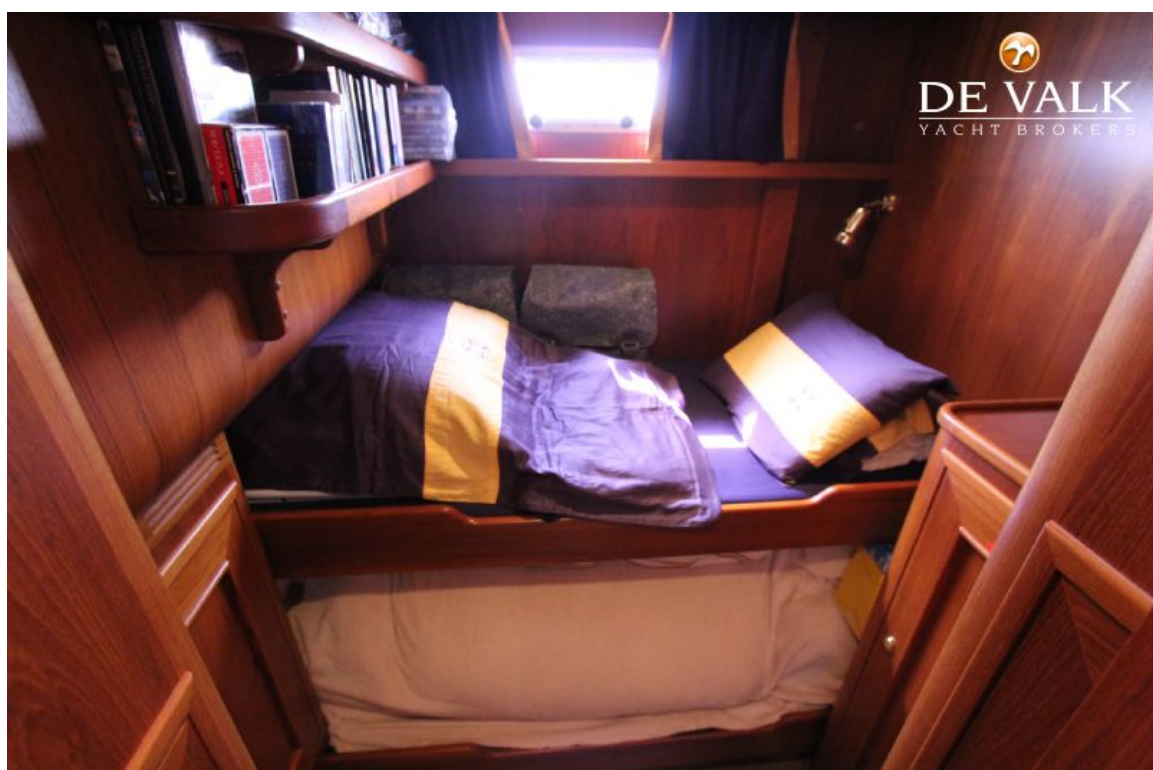
BOARNCRUISER 50 CLASSIC LINE



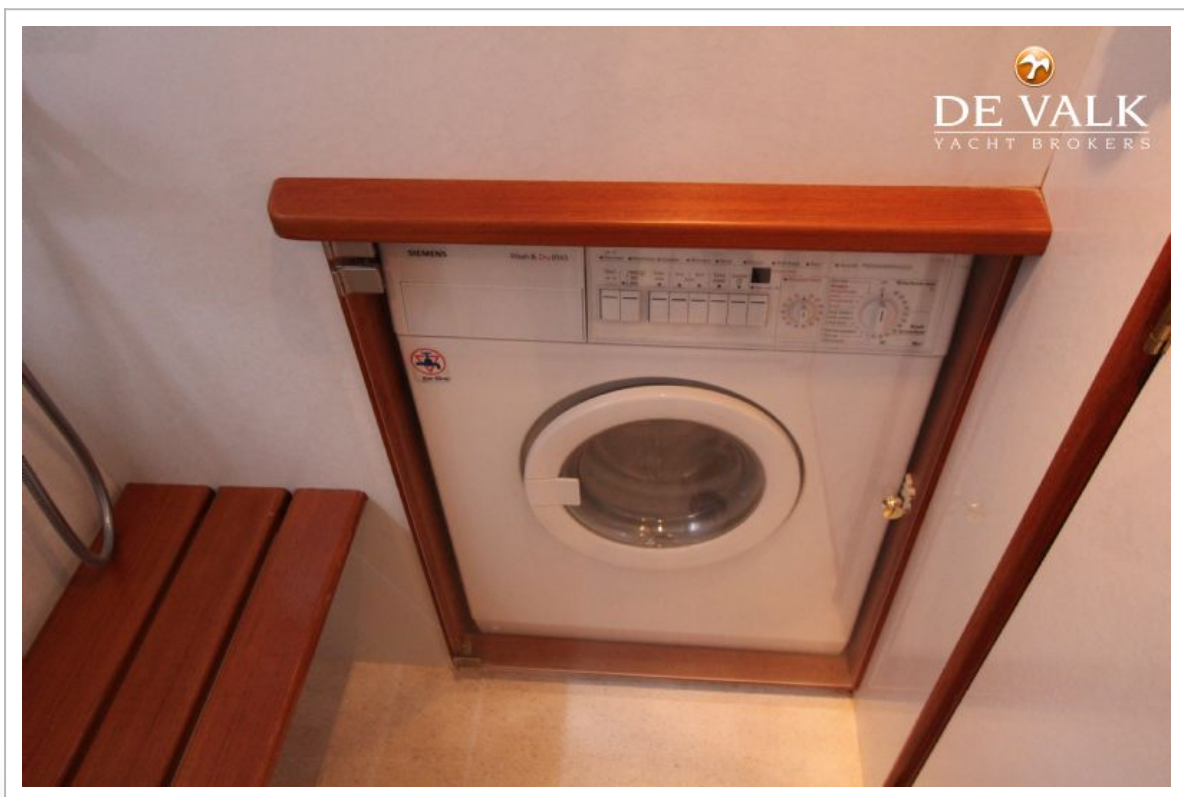
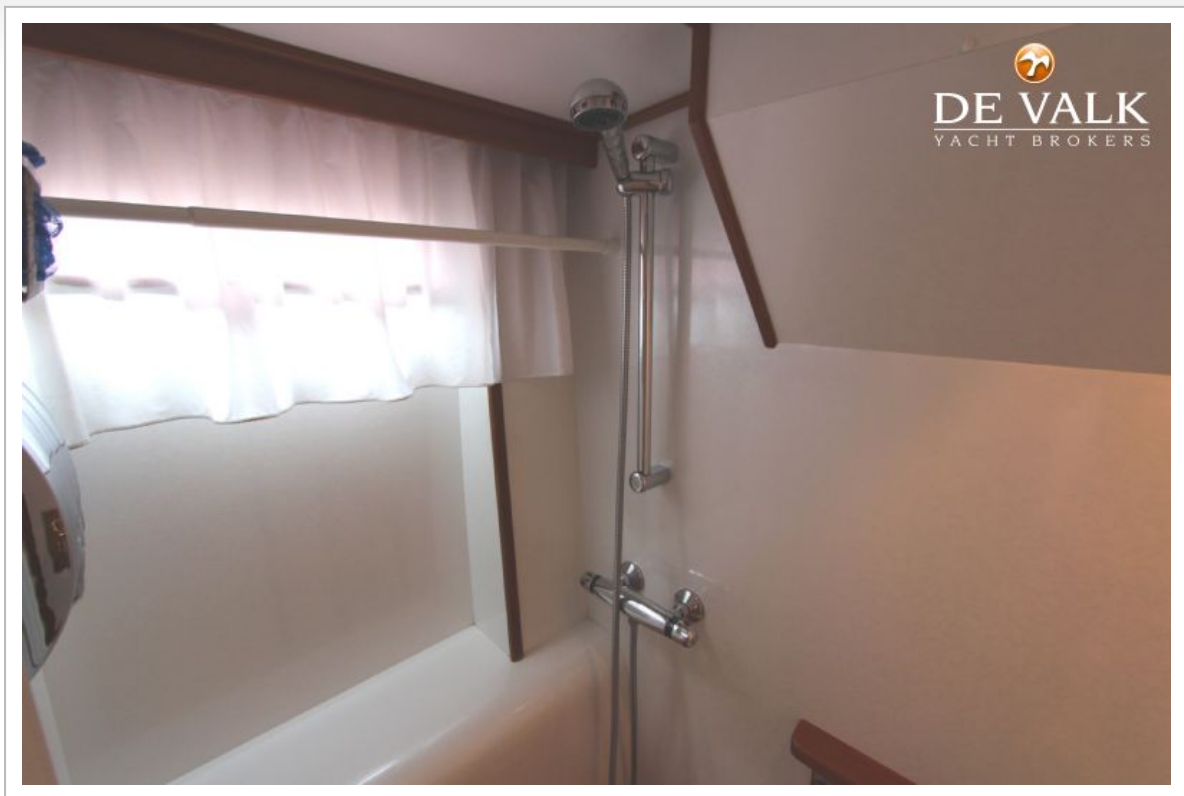
BOARNCRUISER 50 CLASSIC LINE



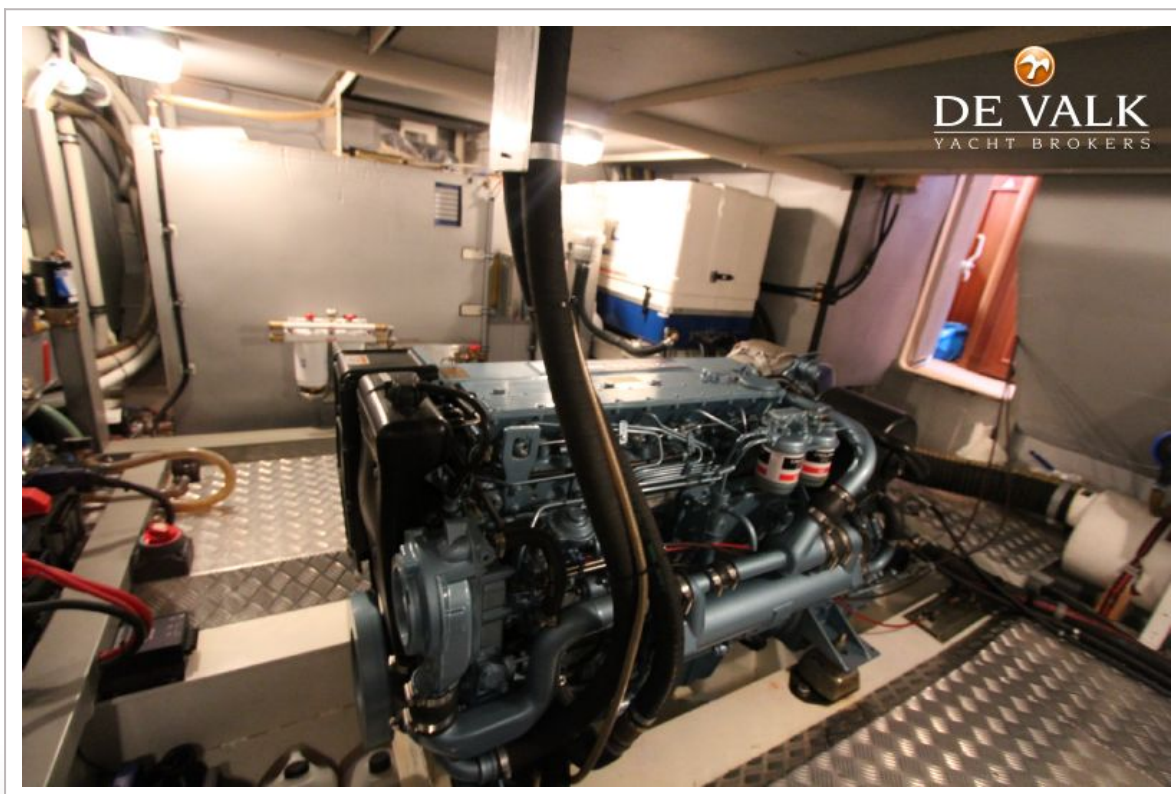
BOARNCRUISER 50 CLASSIC LINE



BOARNCRUISER 50 CLASSIC LINE

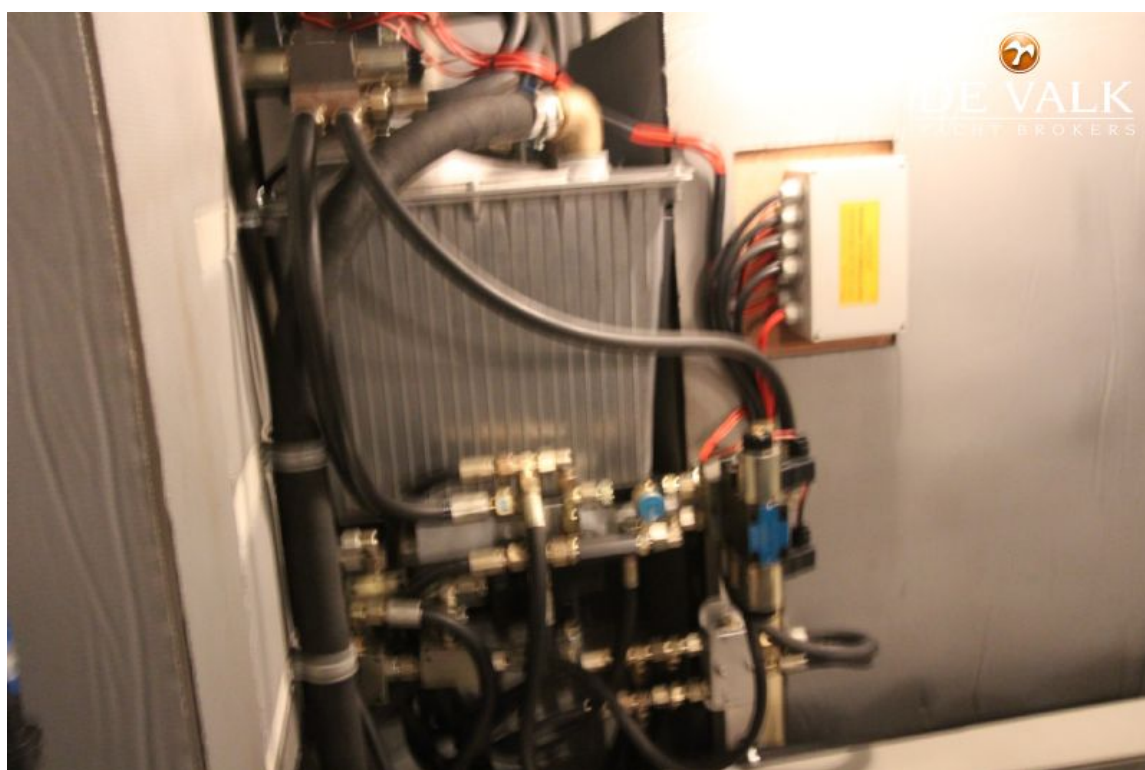


BOARNCRUISER 50 CLASSIC LINE



BOARNCRUISER 50 CLASSIC LINE





BOARNCRUISER 50 CLASSIC LINE

