



DE VALK  
YACHT BROKERS



## LINSSEN GRAND STURDY 34.9 AC



DE VALK  
YACHT BROKERS

# LINSSSEN GRAND STURDY 34.9 AC

## BROKER'S COMMENTS

This Linssen Grand Sturdy 34.9 is in as-new condition. Easy to handle by one person with the Volvo Penta diesel engine and electric bow- and sternthruster. The current owner installed a Raymarine autopilot and Simrad VHF in 2014. Equipped with two cabins with double berths and the dinette is convertible into a double berth, which makes this Linssen has six berths in total. You are very welcome to make an appointment to look at this beautiful Linssen Grand Sturdy. Delivery without VAT possible and trade-in considered!

*Arne Doodeman*

## SPECIFICATIONS

<b>Dimensions</b>	10.70 x 3.40 x 1.00 (m)	<b>Builder</b>	Linssen Yachts
<b>Built</b>	2011	<b>Cabins</b>	2
<b>Material</b>	Steel	<b>Berths</b>	6
<b>Engine(s)</b>	1 x Volvo Penta D2-75 diesel	<b>Hp/Kw</b>	75.00 (hp), 55.13 (kw)
<b>Asking price</b>	sold (VAT )	<b>Lying</b>	at sales office

## CONTACT

<b>Sales office</b>	De Valk Sneek	<b>Telephone</b>	+31 (0)515 42 80 30
<b>Address</b>	Zwolsmanweg 7 8606 KC Sneek NL	<b>E-mail</b>	sneek@devalk.nl

## DISCLAIMER

These particulars are given in good faith as supplied but cannot be guaranteed.



# LINSSEN GRAND STURDY 34.9 AC

## GENERAL

Model	LINSSEN GRAND STURDY 34.9 AC
Type	motor yacht
LOA (m)	10,70
Beam (m)	3,40
Draft (m)	1,00
Air draft (m)	2,50
Year built	2011
Builder	Linssen Yachts
Country	The Netherlands
Displacement (t)	10
CE norm	C
Hull material	steel
Hull colour	off-white
Superstructure material	steel
Deck material	steel
Deck finish	anti-slip paint
Cockpit deck finish	teak
Window frame	aluminium
Window material	glass
Mast can be lowered	yes
Fuel tank (litre)	240
Level indicator (fuel tank)	yes
Freshwater tank (litre)	220
Level indicator (freshwater)	yes
Blackwater tank (litre)	235
Wheel steering	hydraulic
Outside helm position	hydraulic

## ACCOMMODATION

Cabins	2
--------	---



# LINSSEN GRAND STURDY 34.9 AC

Berths	6
Floor	teak and holly
Aft deck	yes
Saloon	yes
Heating	diesel ducted hot air Eberspacher
Chart table	yes
Dinette to convert into berth	yes
Opening door to aft deck	yes
Galley	yes
Countertop	corian
Sink	stainless steel
Cooker	calor gas ENO 3-burner
Fridge	with freezer compartment
Hot water system	220V + engine
Water pressure system	yes
Owners cabin	French bed
Wardrobe	shelves and hanging
Bathroom	en suite
Toilet	en suite
Toilet system	electric
Wash basin	at the toilet
Shower	en suite
Guest cabin 1	double bed
Wardrobe	shelves and hanging
Bathroom	en suite
Toilet	en suite
Toilet system	electric
Wash basin	in the bathroom

## MACHINERY

No of engines	1
---------------	---



# LINSSEN GRAND STURDY 34.9 AC

<b>Make</b>	Volvo Penta
<b>Type</b>	D2-75
<b>HP</b>	75,00
<b>kW</b>	55,13
<b>Fuel</b>	diesel
<b>Engine hours</b>	820 (30-9-2015)
<b>Engine cooling system</b>	freshwater heat exchanger
<b>Drive</b>	shaft
<b>Engine controls</b>	manual Ultraflex
<b>Gearbox</b>	hydraulic ZF
<b>Bowthruster</b>	electric
<b>Sternthruster</b>	electric
<b>Thrust bearing</b>	Aquadrive
<b>Propeller type</b>	fixed
<b>Propeller shaft material</b>	stainless steel
<b>Shaft lubrication</b>	water
<b>Electric bilge pump</b>	yes
<b>Batteries</b>	yes
<b>Battery monitor</b>	yes
<b>Battery charger/inverter</b>	Mastervolt Mass combi 12/2000/100
<b>Shorepower</b>	with cable

## NAVIGATION

<b>Depth sounder</b>	Raymarine ST60+ tridata
<b>Log</b>	Raymarine ST60+ tridata
<b>VHF</b>	Simrad RS10 (2014)
<b>Autopilot</b>	Raymarine (2014)
<b>Rudder angle indicator</b>	Raymarine ST60+

## EQUIPMENT

<b>Sprayhood</b>	yes
------------------	-----



# LINSSEN GRAND STURDY 34.9 AC

Cockpit cover	yes
Cockpit cushions	yes
Bathing platform	yes
Boarding ladder	stainless steel
Deck shower	yes
Anchor	yes
Anchor chain	yes
Windlass	electrical Quick
Sea railing	stainless steel
Wiper	2x
Horn	yes
Fenders	yes
Mooring lines	yes
TV	Philips LCD
TV receiver	Glomex
Radio-cd player	Kenwood
Fire extinguisher	yes



# LINSSEN GRAND STURDY 34.9 AC





# LINSSEN GRAND STURDY 34.9 AC





# LINSSEN GRAND STURDY 34.9 AC



# LINSSEN GRAND STURDY 34.9 AC



# LINSSEN GRAND STURDY 34.9 AC





# LINSSEN GRAND STURDY 34.9 AC



# LINSSEN GRAND STURDY 34.9 AC





# LINSSEN GRAND STURDY 34.9 AC



# LINSSEN GRAND STURDY 34.9 AC





# LINSSEN GRAND STURDY 34.9 AC

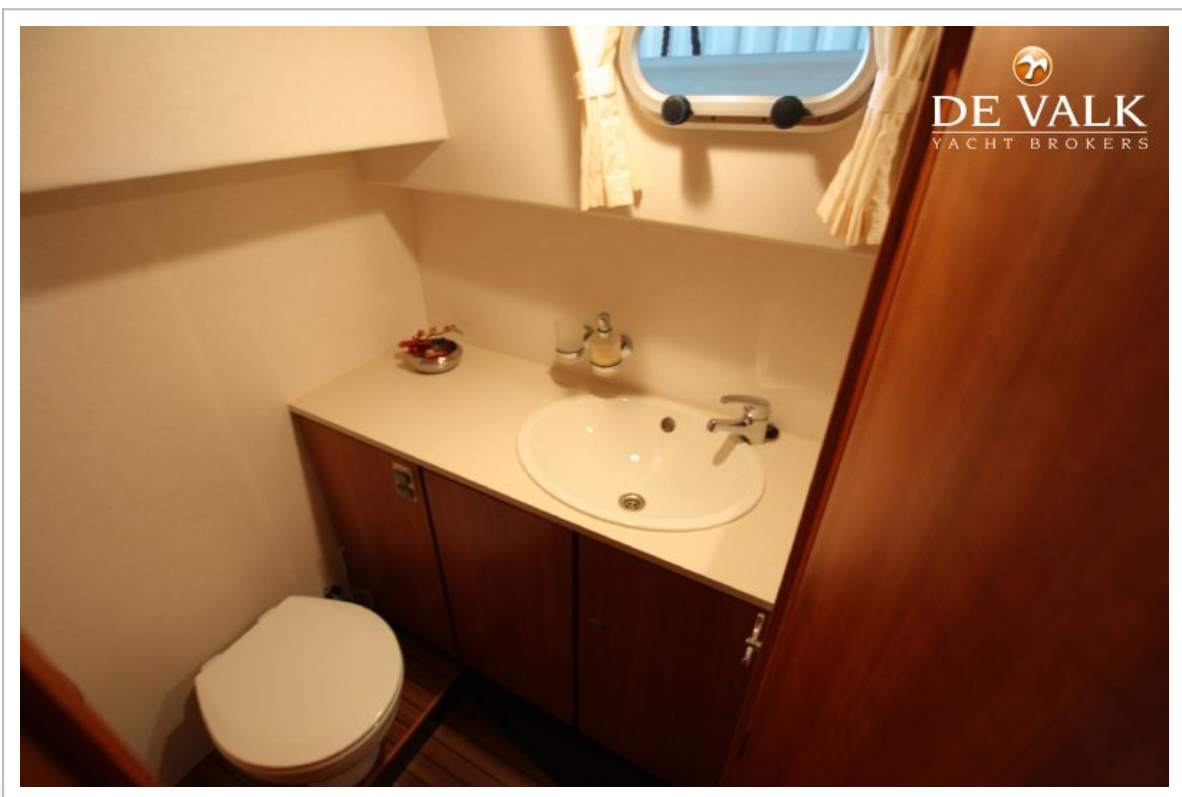
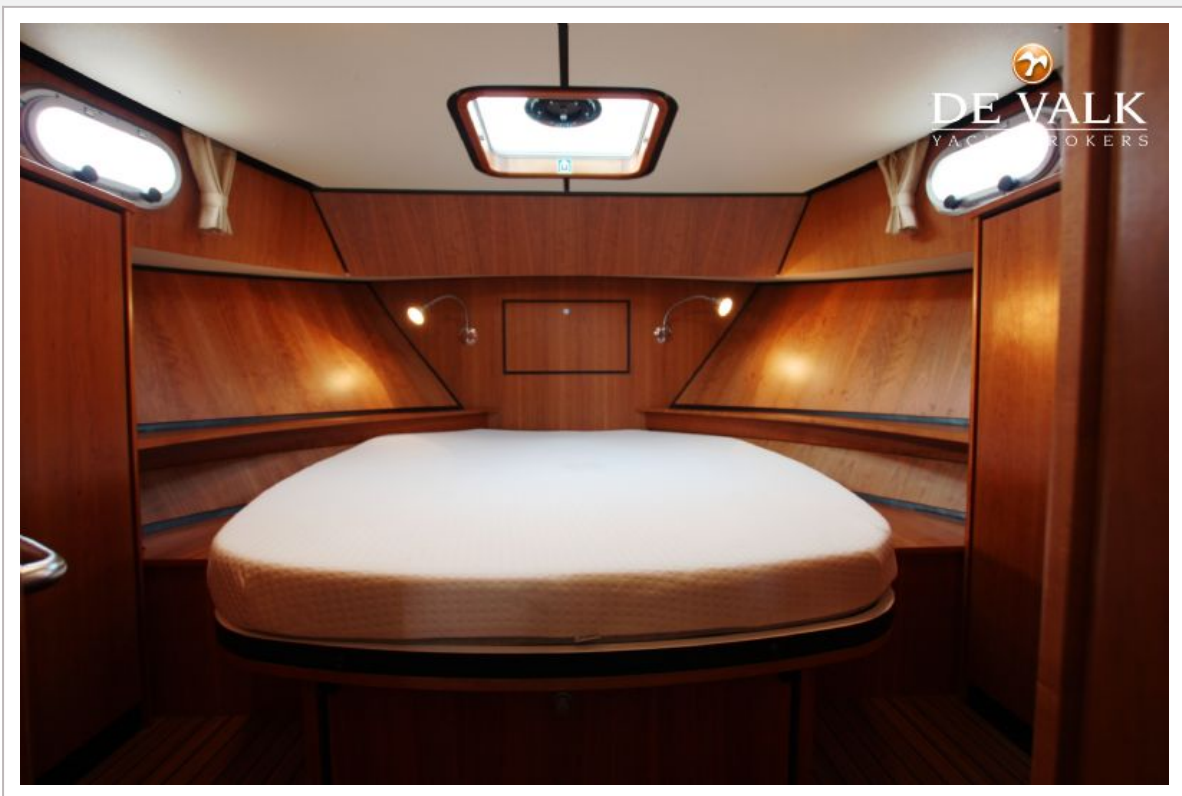


# LINSSEN GRAND STURDY 34.9 AC





# LINSSEN GRAND STURDY 34.9 AC



# LINSSEN GRAND STURDY 34.9 AC



# LINSSEN GRAND STURDY 34.9 AC





# LINSSEN GRAND STURDY 34.9 AC

