



LINSSEN 470 AC MARK II

LINSSSEN 470 AC MARK II

BROKER'S COMMENTS

Linssen Grand Sturdy 470 Mark II: built in 2002 at the popular Linssen shipyard. The current owner made a lot of longer trips in the channels and open sea. The layout of "Alacaluf": two cabin with private bathroom, dinette, galley and saloon. Equipped with two 145 hp Volvo Penta diesel engines and bowthruster. She will be auctioned on June, 29th 2016 in cooperation with Schipveiling and BVA Autions. For further details and viewing days go to: <https://en.bva-auctions.com/auction/index/20859> Starting price of the auction EUR 150,000, offers can be made from June, 22nd on the website of BVA.

Pieter Bosma

SPECIFICATIONS

| | | | |
|---------------------|--|----------------|------------------------------|
| Dimensions | 14.28 x 4.47 x 1.35 (m) | Builder | Linssen Yachts |
| Built | 2002 | Cabins | 2 |
| Material | Steel | Berths | 4 |
| Engine(s) | 2 x Volvo Penta TAMD41 HD 6-cil diesel | Hp/Kw | 2 x 145.00 (hp), 106.58 (kw) |
| Asking price | sold (VAT) | Lying | at sales office |

CONTACT

| | | | |
|---------------------|--------------------------------------|------------------|---------------------|
| Sales office | De Valk Sneek | Telephone | +31 (0)515 42 80 30 |
| Address | Zwolsmanweg 7 8606 KC Sneek NL | E-mail | sneek@devalk.nl |

DISCLAIMER

These particulars are given in good faith as supplied but cannot be guaranteed.



GENERAL

| | |
|------------------------------|---|
| Model | LINSSEN 470 AC MARK II |
| Type | motor yacht |
| LOA (m) | 14,28 |
| LWL (m) | 12,00 |
| Beam (m) | 4,47 |
| Draft (m) | 1,35 |
| Air draft (m) | 3,06 |
| Headroom (m) | 2,00 |
| Year built | 2002 |
| Builder | Linssen Yachts |
| Country | The Netherlands |
| Designer | Linssen Yachts |
| Displacement (t) | 25 |
| CE norm | B |
| Hull material | steel |
| Hull colour | blue |
| Hull shape | multi hard chine |
| Superstructure material | steel |
| Rubbing strake | fender rope |
| Deck material | steel |
| Deck finish | teak |
| Window frame | aluminium |
| Window material | glass |
| Mast can be lowered | hydraulic |
| Fuel tank (litre) | steel 1760 litre (2x 580L and 1 x 600L) |
| Level indicator (fuel tank) | yes |
| Freshwater tank (litre) | 1100 litre (5 x 220L) |
| Level indicator (freshwater) | yes |
| Blackwater tank (litre) | polyethylene 220 litre |
| Level indicator (blackwater) | yes |



| | |
|-----------------------|-----------|
| Wheel steering | hydraulic |
| Inside helm position | yes |
| Outside helm position | hydraulic |

ACCOMMODATION

| | |
|-------------------------------|------------------------------------|
| Cabins | 2 |
| Berths | 4 |
| Floor | teak and holly |
| Aft deck | yes |
| Saloon | yes |
| Heating | central heating Eberspacher |
| Dinette | yes |
| Dinette to convert into berth | yes |
| Opening door to aft deck | yes |
| Galley | yes |
| Countertop | yes |
| Sink | stainless steel Double sink |
| Cooker | electric Siemens 4 burner |
| Microwave | Siemens Microwelle plus |
| Fridge | 2 x |
| Hot water system | 220V + engine Isothemp boiler |
| Water pressure system | electrical |
| Owners cabin | French bed |
| Wardrobe | drawers Als walk-in closed hanging |
| Bathroom | en suite |
| Toilet system | electric |
| Wash basin | yes |
| Shower | yes |
| Guest cabin 1 | v-bed |
| Wardrobe | drawers |
| Bathroom | en suite |



| | |
|-----------------|-------------------------|
| Toilet system | electric |
| Wash basin | yes |
| Shower | yes |
| Washing machine | Eumenia Sparmeister 802 |

MACHINERY

| | |
|--------------------------|---------------------------|
| No of engines | 2 |
| Make | Volvo Penta |
| Type | TAMD41 HD 6-cil |
| HP | 145,00 |
| kW | 106,58 |
| Fuel | diesel |
| Year installed | 2002 |
| Maximum speed (kn) | 15.5 km/h |
| Cruising speed (kn) | 12 km/h |
| Engine hours | 2250 (15-4-2015) |
| Engine cooling system | freshwater heat exchanger |
| Engine controls | manual Morse |
| Gearbox | hydraulic ZF Hurth |
| Bowthruster | electric |
| Thrust bearing | Python |
| Propeller type | fixed |
| Propeller blades | 5 bladed |
| Propeller shaft material | stainless steel |
| Shaft lubrication | water |
| Electric bilge pump | yes |
| Generator | Onan 9,5 Kva |
| Running hours generator | 752 (14-04-2015) |
| Batteries | yes |
| Battery monitor | Mastervolt |
| Battery charger | Mastervolt Mass 12/60 |



| | |
|------------|------------------|
| Inverter | Xantex 1800 watt |
| Shorepower | with cable |

NAVIGATION

| | |
|---------------|------------------------|
| Compass | Raymarine ST60 |
| Depth sounder | Raymarine ST60 tridata |
| Log | Raymarine ST60 tridata |
| Windset | Raymarine ST60 |
| VHF | Skanti |
| Autopilot | Raymarine ST6001+ |
| Radar | Raymarine RL80C |
| Plotter | Geonav 5 touring |
| Searchlight | yes |

EQUIPMENT

| | |
|----------------------------|-------------------|
| Sprayhood | yes |
| Bimini | yes |
| Cockpit table | yes |
| Cockpit chairs | yes |
| Bathing platform | yes |
| Boarding ladder | yes |
| Transom door | yes |
| Deck shower | yes |
| Anchor | Bruce |
| Anchor chain | yes |
| Windlass | electrical Lewmar |
| Deck wash | yes |
| Davits | steel 2 x |
| Davits controls | manual |
| Sea railing | stainless steel |
| Railing side opening gates | yes |



LINSSEN 470 AC MARK II

| | |
|-----------------------------|-------------------------------|
| Life raft | yes |
| Wiper | 5 x heavy duty |
| Horn | yes |
| Fenders | yes |
| Mooring lines | yes |
| TV | Sharp |
| TracVision ball | Tracvision M2 |
| Radio-cd player | Sony |
| Clock - barometer | Clock / barometer /hygrometer |
| Fire extinguisher | yes |
| Extinguisher in engine room | yes |



LINSSEN 470 AC MARK II



BROKERAGE | CHARTER | BERTHS | FINANCE | INSURANCE | YACHT MANAGEMENT

DE VALK
YACHT BROKERS



**This yacht will be auctioned,
for further details please visit www.devalk.nl**

**Dit schip zal worden geveild,
voor meer informatie gaat u naar www.devalk.nl**

**Dieses Schiff wird versteigert,
für weitere informationen besuchen Sie www.devalk.nl**

WWW.DEVALK.NL



DE VALK
YACHT BROKERS



LINSSEN 470 AC MARK II



LINSSEN 470 AC MARK II



LINSSEN 470 AC MARK II



LINSSEN 470 AC MARK II



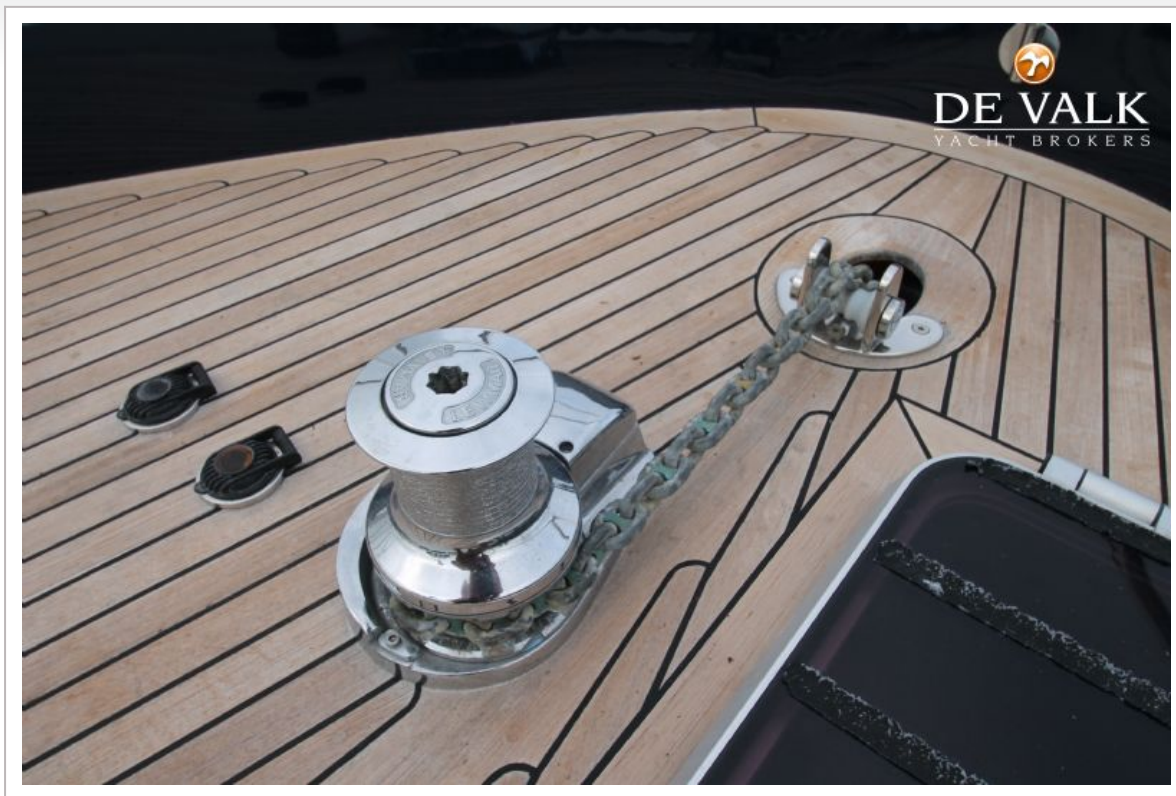
LINSSEN 470 AC MARK II



LINSSEN 470 AC MARK II



LINSSEN 470 AC MARK II



LINSSEN 470 AC MARK II



LINSSEN 470 AC MARK II



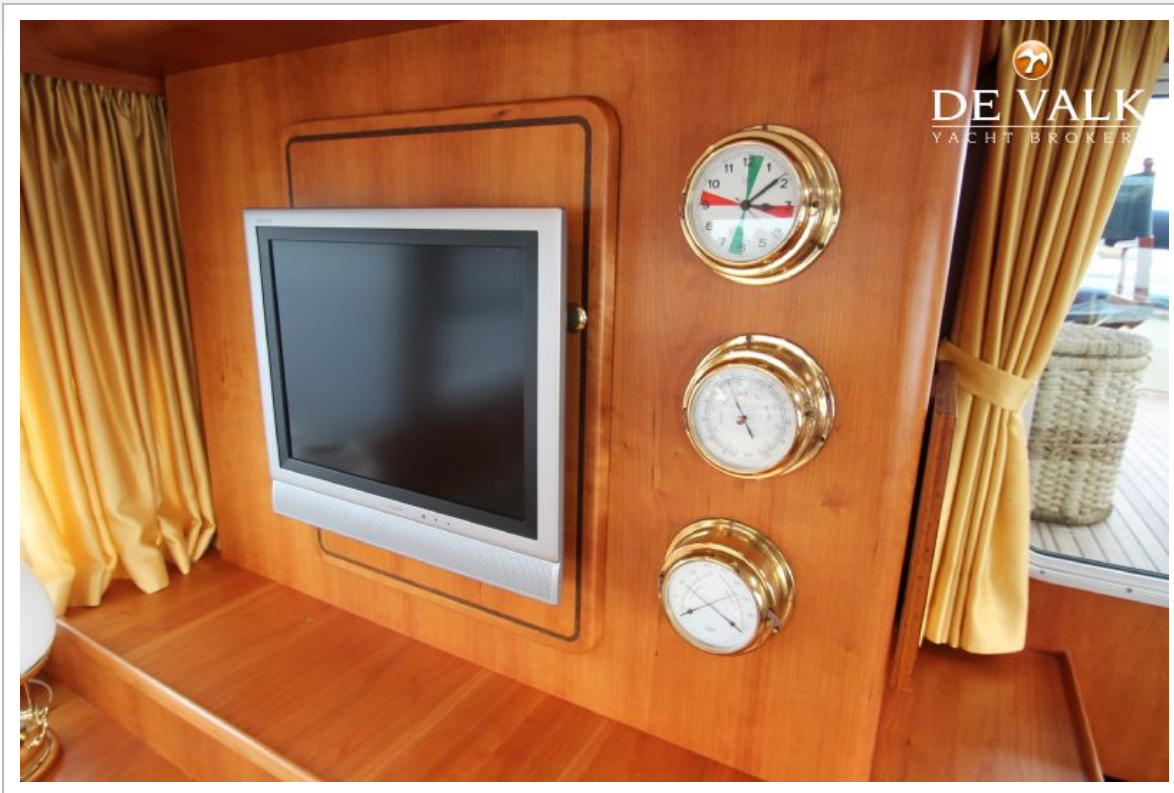
LINSSEN 470 AC MARK II



LINSSEN 470 AC MARK II



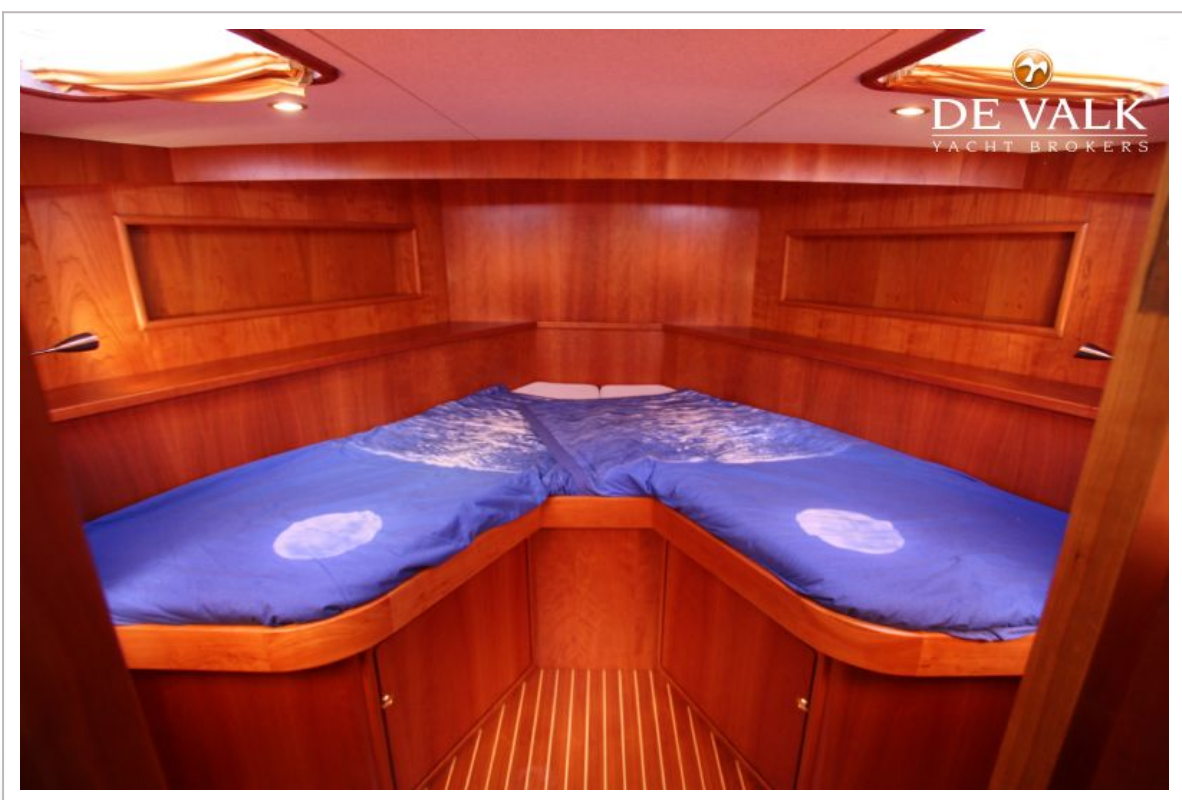
LINSSEN 470 AC MARK II



LINSSEN 470 AC MARK II



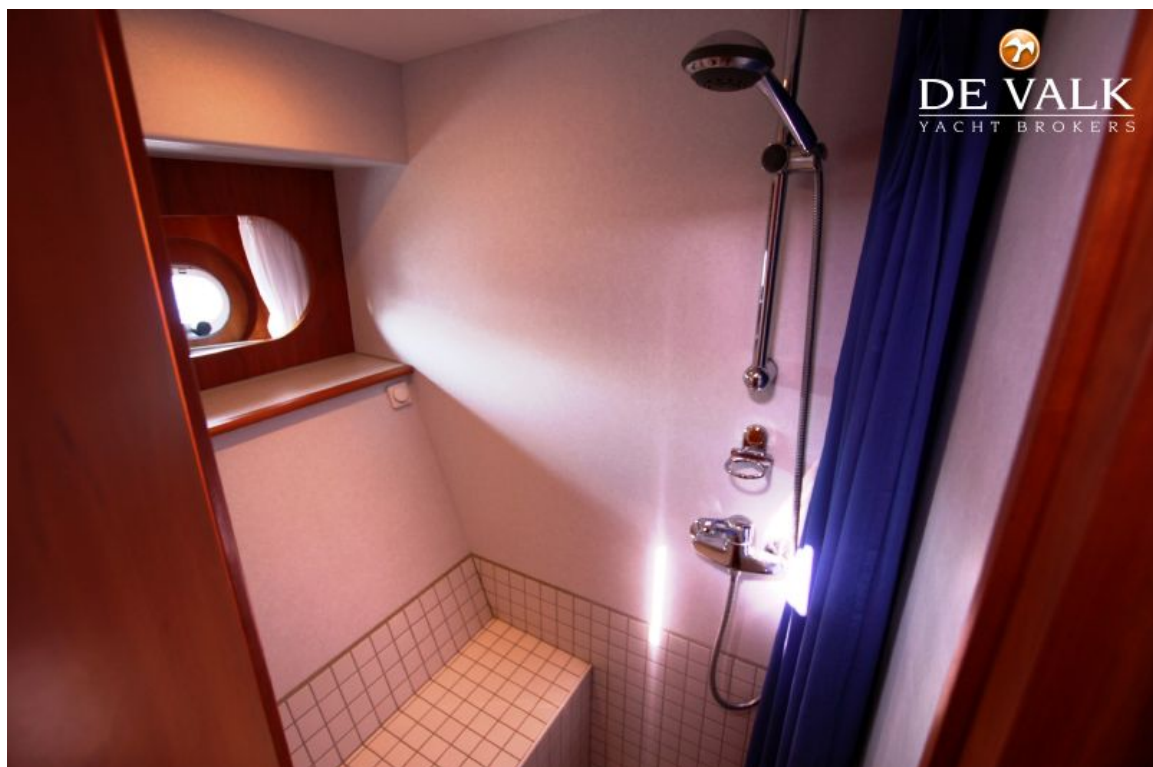
LINSSEN 470 AC MARK II



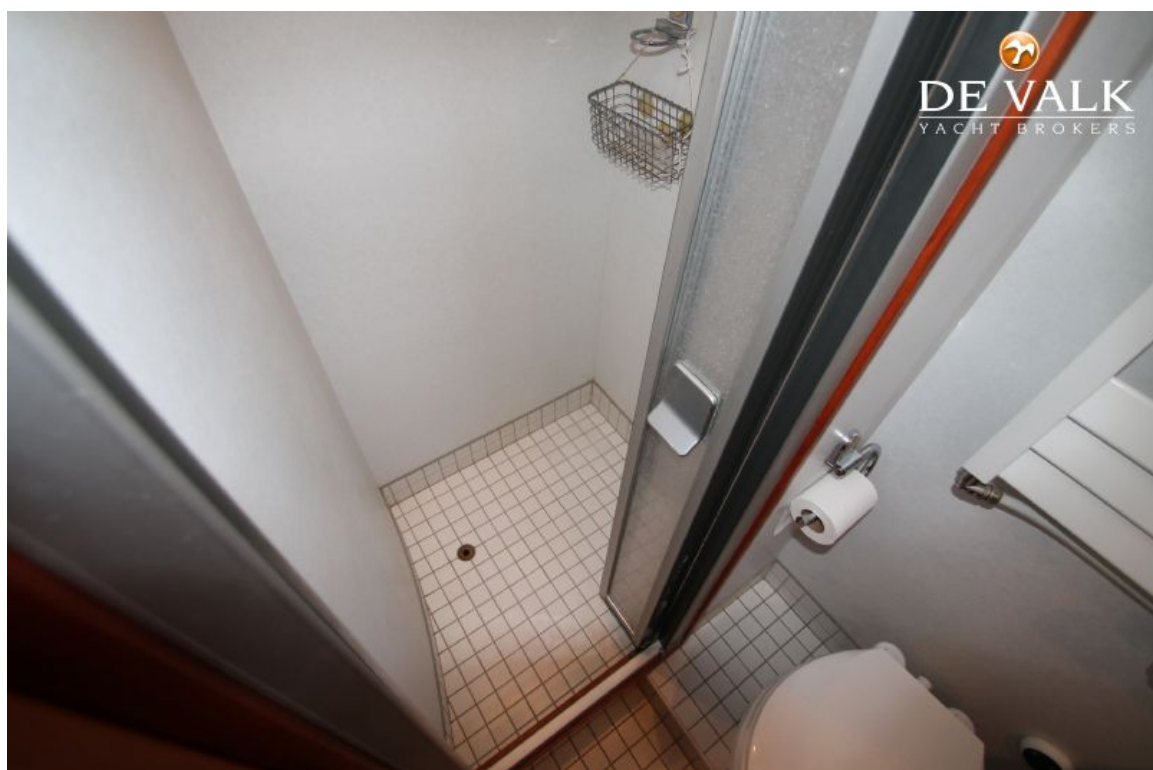
LINSSEN 470 AC MARK II



LINSSEN 470 AC MARK II



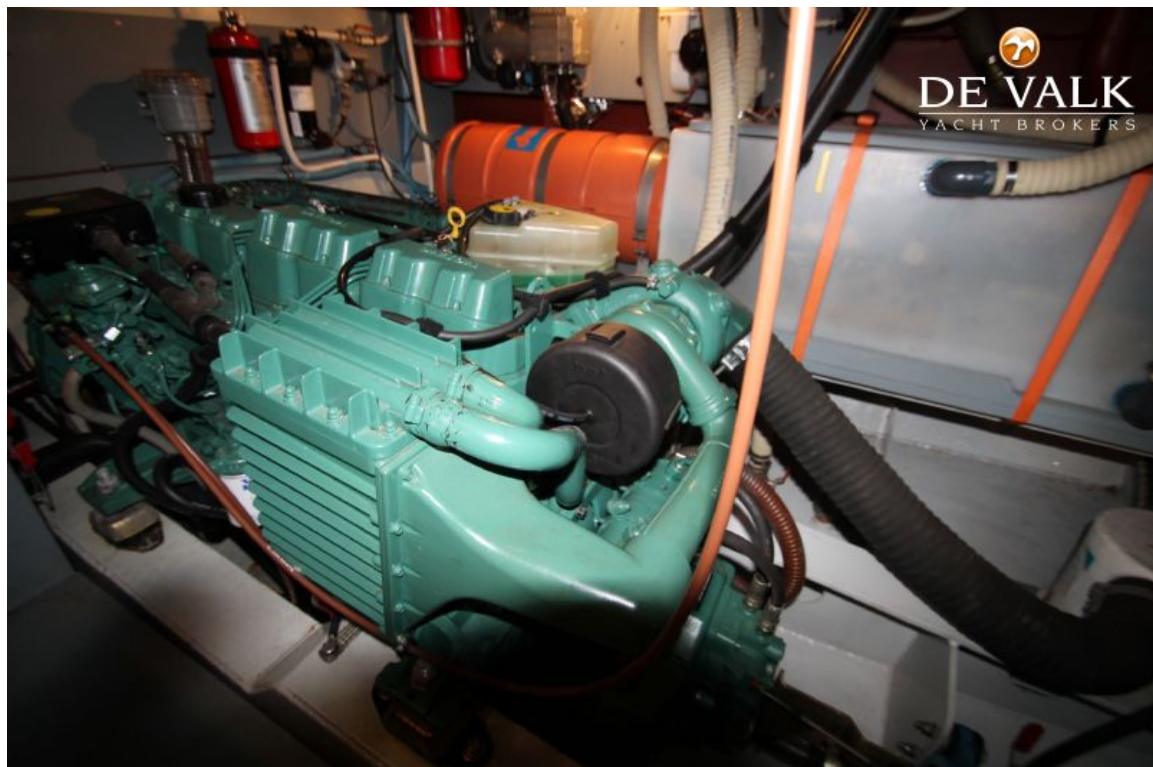
LINSSEN 470 AC MARK II



LINSSEN 470 AC MARK II



LINSSEN 470 AC MARK II



LINSSEN 470 AC MARK II

