



## DRENTSCHE KOTTER 1160 OK

## BROKER'S COMMENTS

Drentsche Kotter 1160 OK "Zephyros" is a striking appearance with her red hull. This steel motoryacht with large open cockpit is very well maintained and built at Jachthaven Meppel in 2007. Due her two steering positions, Volkswagen diesel engine and her bow- and sternthruster, it very easy to maneuver her. She is equipped with double glazed windows, washing machine etc. Come over for an inspection of this beautiful Drentsche Kotter in our covered sales marina in Sneek.

*Pieter Bosma*

## SPECIFICATIONS

<b>Dimensions</b>	11.65 x 3.95 x 1.00 (m)	<b>Builder</b>	Jachthaven Meppel
<b>Built</b>	2007	<b>Cabins</b>	1
<b>Material</b>	Steel	<b>Berths</b>	4
<b>Engine(s)</b>	1 x VW TDI 100-5 diesel	<b>Hp/Kw</b>	100.00 (hp), 73.50 (kw)
<b>Asking price</b>	sold (VAT )	<b>Lying</b>	at sales office

## CONTACT

<b>Sales office</b>	De Valk Sneek	<b>Telephone</b>	+31 (0)515 42 80 30
<b>Address</b>	Zwolsmanweg 7 8606 KC Sneek NL	<b>E-mail</b>	sneek@devalk.nl

## DISCLAIMER

These particulars are given in good faith as supplied but cannot be guaranteed.



## GENERAL

Model	DRENTSCHE KOTTER 1160 OK
Type	motor yacht
LOA (m)	11,65
LWL (m)	10,45
Beam (m)	3,95
Draft (m)	1,00
Air draft (m)	2,50
Year built	2007
Builder	Jachthaven Meppel
Country	The Netherlands
Designer	Van Vossen
Displacement (t)	12,5
CE norm	C
Hull material	steel
Hull colour	red
Hull thickness (mm)	5 mm
Hull shape	multi hard chine
Superstructure material	steel
Superstructure (mm)	5 mm
Rubbing strake	fender rope
Deck material	steel
Deck finish	non-skid paint
Cockpit deck finish	teak
Window frame	aluminium Gebo
Window material	double glazing
Deckhatch	2x Gebo
Portholes	8x Gebo
Mast can be lowered	Stainless steel
Fuel tank (litre)	600 l.
Level indicator (fuel tank)	VDO



Freshwater tank (litre)	700 l.
Level indicator (freshwater)	VDO
Blackwater tank (litre)	300 l.
Level indicator (blackwater)	VDO
Wheel steering	hydraulic
Inside helm position	yes
Outside helm position	hydraulic

## ACCOMMODATION

Cabins	1
Berths	4
Floor	teak and holly
Open cockpit	yes
Saloon	yes
Sliding roof	yes
Heating	diesel ducted hot air Eberspacher D5
Convertible berth	yes
Opening door to cockpit	yes
Galley	yes
Countertop	yes
Sink	stainless steel
Cooker	calor gas Smev 3-burner
Fridge	Isotherm
Hot water system	220V + engine 60 l.
Water pressure system	electrical
Owners cabin	twin single
Wardrobe	hanging and shelves
Bathroom	separate
Toilet	yes
Toilet system	electric Tecma
Wash basin	yes



Shower	yes
Washing machine	Candy

## MACHINERY

No of engines	1
Make	VW
Type	TDI 100-5
HP	100,00
kW	73,50
Fuel	diesel
Year installed	2007
Engine hours	1881
Engine cooling system	freshwater heat exchanger
Drive	shaft
Shaft seal	yes
Engine controls	electrical Morse
Gearbox	hydraulic ZF
Bowthruster	electric Sidepower SP95
Sternthruster	electric Sidepower SP95
Exhaust	watercooled
Thrust bearing	yes
Propeller type	fixed
Propeller blades	4-bladed
Propeller shaft material	stainless steel
Shaft lubrication	water
Electric bilge pump	yes
Generator	3,5 Kw on main engine
Start battery	yes
Service battery	4x 130 Ah (2016)
Battery monitor	Victron BMV-501
Battery charger/inverter	Victron Phoenix 12/1600/70



Shorepower with cable

## NAVIGATION

Compass	Clipper
Depth sounder	Clipper
Log	Clipper
VHF	Raymarine Ray 54E
Rudder angle indicator	VDO

## EQUIPMENT

Cockpit cover	yes
Window cover	yes
Cockpit cushions	yes
Cockpit table	yes
Bathing platform	yes
Boarding ladder	stainless steel
Anchor	yes
Anchor chain	yes
Windlass	manual Lofrance
Deck wash	yes
Sea railing	stainless steel
Grab rail (superstructure)	stainless steel
Railing side opening gates	2x
Wiper	3x
Horn	yes
Fenders	yes
Mooring lines	yes
TV	Samsung
TV receiver	Digitenne
Radio-cd player	Alpine
Clock - barometer	Plastimo clock



Latest extinguisher survey

yes



# DRENTSCHE KOTTER 1160 OK





# DRENTSCHE KOTTER 1160 OK



# DRENTSCHE KOTTER 1160 OK





# DRENTSCHE KOTTER 1160 OK



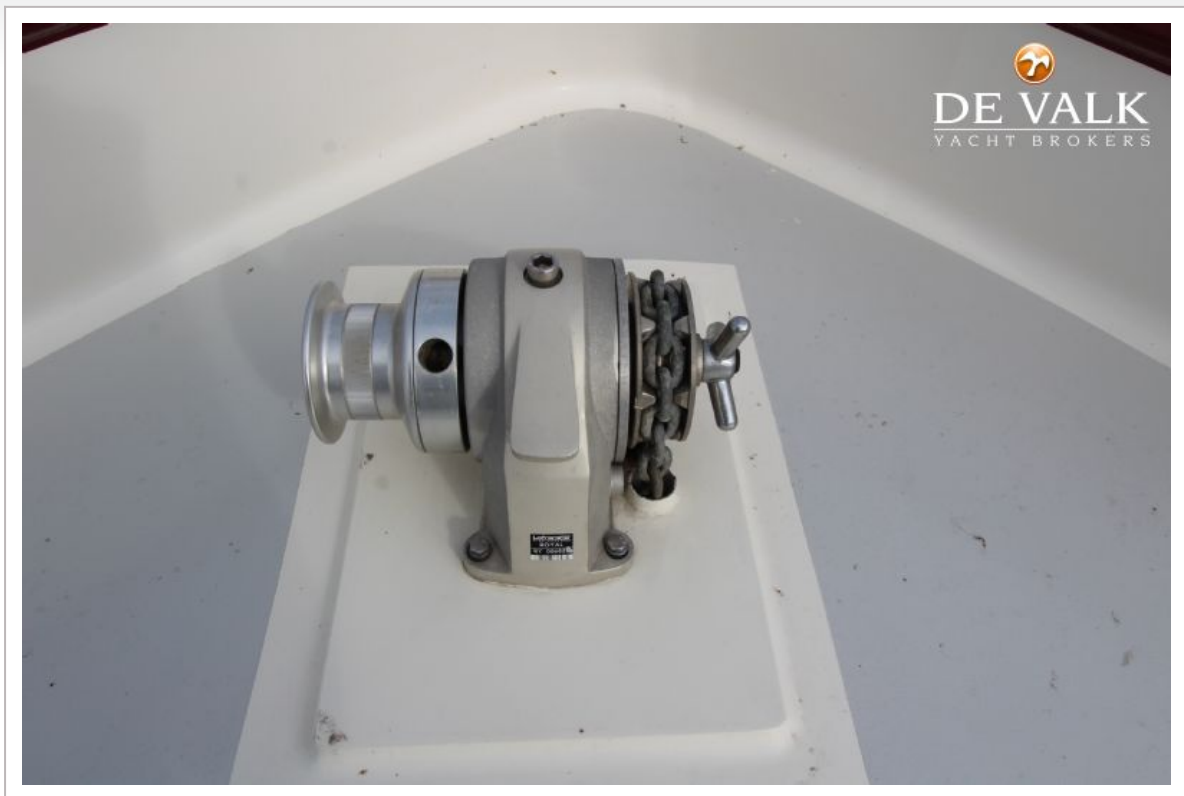
# DRENTSCHE KOTTER 1160 OK



# DRENTSCHE KOTTER 1160 OK







# DRENTSCHE KOTTER 1160 OK





# DRENTSCHE KOTTER 1160 OK

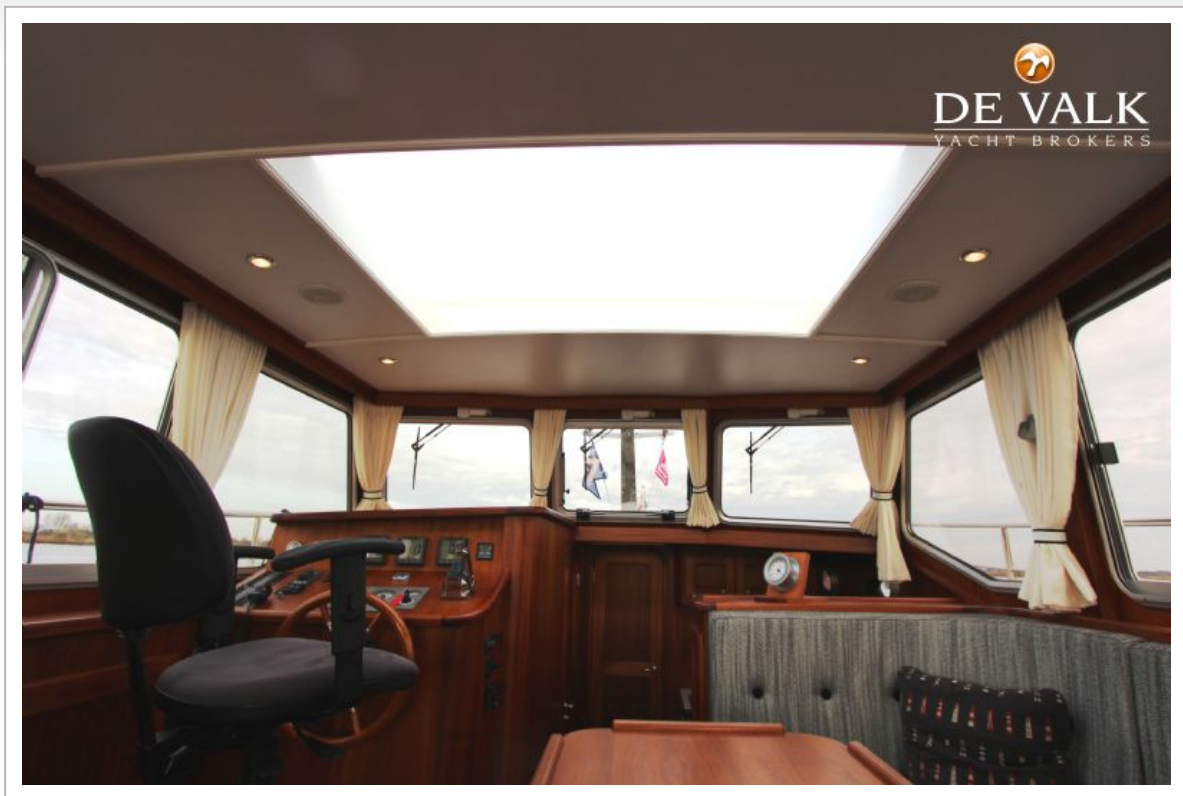




# DRENTSCHE KOTTER 1160 OK



# DRENTSCHE KOTTER 1160 OK





# DRENTSCHE KOTTER 1160 OK



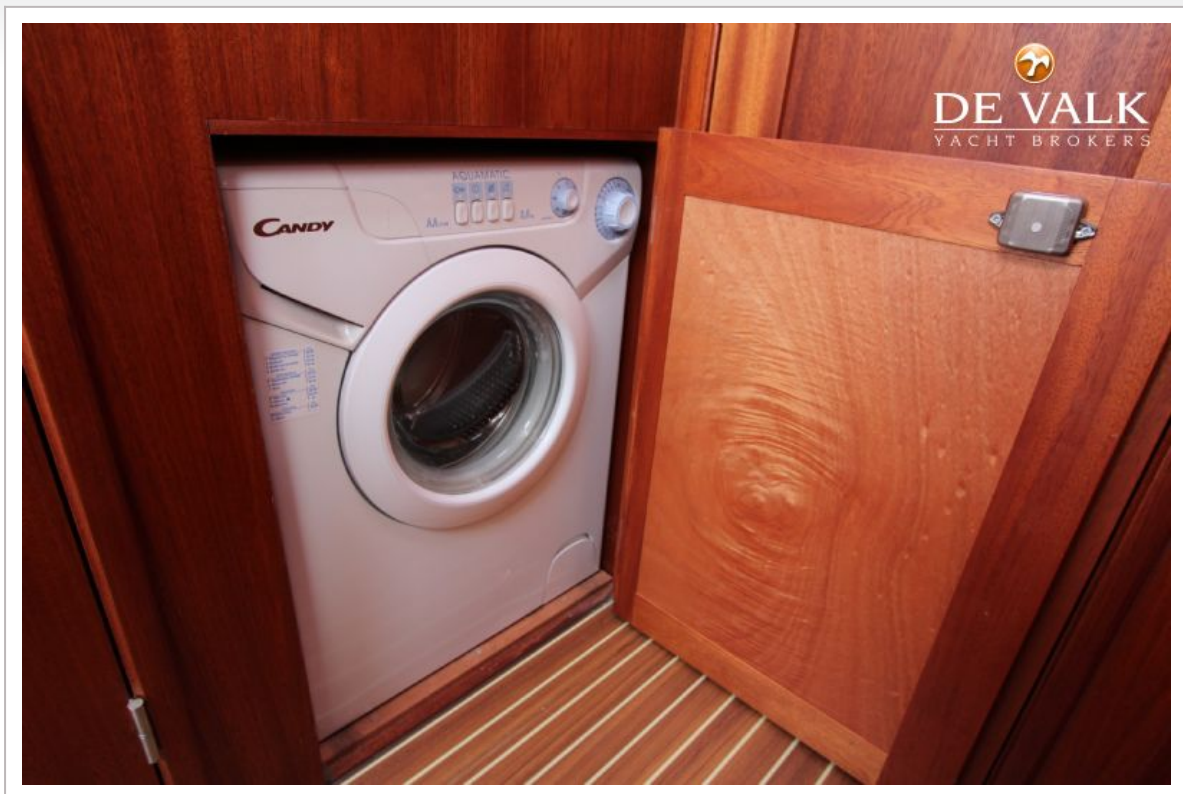
# DRENTSCHE KOTTER 1160 OK







# DRENTSCHE KOTTER 1160 OK





# DRENTSCHE KOTTER 1160 OK

