



DE VALK  
YACHT BROKERS



BROOM 365



DE VALK  
YACHT BROKERS

## BROKER'S COMMENTS

High quality motoryacht Broom 365 for sale! Sea going and fast, but also doing very well under low speed. This beautiful GRP motoryacht is built for her first and only owner and is always stored in a covered winter storage. This Broom 365 is in an immaculate condition. No sea water boat, always used on the inland waterways of the Netherlands. Visit "Solo III" in Sneek!

*Pieter Bosma*

## SPECIFICATIONS

<b>Dimensions</b>	11.13 x 3.78 x 1.02 (m)	<b>Builder</b>	C.J. Broom & Sons Ltd.
<b>Built</b>	2006	<b>Cabins</b>	2
<b>Material</b>	GRP	<b>Berths</b>	
<b>Engine(s)</b>	2 x Volvo Penta D6 310I-B HS diesel	<b>Hp/Kw</b>	2 x 310.00 (hp), 227.85 (kw)
<b>Asking price</b>	sold (VAT )	<b>Lying</b>	at sales office

## CONTACT

<b>Sales office</b>	De Valk Sneek	<b>Telephone</b>	+31 (0)515 42 80 30
<b>Address</b>	Zwolsmanweg 7 8606 KC Sneek NL	<b>E-mail</b>	sneek@devalk.nl

## DISCLAIMER

These particulars are given in good faith as supplied but cannot be guaranteed.



## GENERAL

Model	BROOM 365
Type	motor yacht
LOA (m)	11,13
LWL (m)	8,75
Beam (m)	3,78
Draft (m)	1,02
Air draft (m)	3,07
Headroom (m)	2,00
Year built	2006
Builder	C.J. Broom & Sons Ltd.
Country	Great Britain
Designer	Andrew Wolstenholme
Displacement (t)	8
CE norm	B
Hull material	GRP
Hull colour	white
Hull shape	deep-V
Superstructure material	GRP
Rubbing strake	yes
Deck material	GRP
Deck finish	teak
Cockpit deck finish	teak
Window frame	aluminium
Window material	tempered glass
Deckhatch	yes
Portholes	stainless steel Lewmar
Radar arch	collapsible
Fuel tank (litre)	stainless steel 1090
Level indicator (fuel tank)	yes
Freshwater tank (litre)	stainless steel 370



Level indicator (freshwater)	yes
Blackwater tank (litre)	stainless steel 124
Level indicator (blackwater)	yes
Wheel steering	hydraulic
Outside helm position	hydraulic
Emergency tiller	yes

## ACCOMMODATION

Cabins	2
Interior	cherry
Floor	carpet
Aft deck	yes
Deck saloon	yes
Headroom saloon (m)	2.00
Heating	diesel ducted hot air Eberspacher
Aft Cabin	yes
Sliding door to aft deck	yes
Galley	yes
Countertop	plastic
Sink	stainless steel Double
Cooker	calor gas 3-burner Eno
Oven	with grill Vantett
Microwave	Sharp R24
Fridge	with freezer compartment Coolmatic 110 l.
Hot water system	220V + engine
Water pressure system	electrical
Coffee maker	Princess
Crockery	yes
Owners cabin	French bed
Bed length (m)	2.00
Bathroom	en suite



Toilet	en suite
Toilet system	electric Jabsco
Wash basin	in the bathroom
Shower	en suite
Guest cabin 1	v-bed
Bed length (m)	2.00
Wardrobe	yes
Bathroom	separate
Toilet	separate
Toilet system	electric Jabsco
Wash basin	in the bathroom
Shower	separate

## MACHINERY

No of engines	2
Make	Volvo Penta
Type	D6 310I-B HS
HP	310,00
kW	227,85
Fuel	diesel
Year installed	2006
Engine hours	532
Engine cooling system	freshwater heat exchanger
Drive	shaft
Engine controls	electrical
Gearbox	hydraulic HS8AE
Bowthruster	electric DC88 12V
Exhaust	watercooled
Propeller type	fixed
Propeller blades	4-bladed
Propeller shaft material	stainless steel



Shaft lubrication	water
Electric bilge pump	2x
Electrical installation	yes
Batteries	yes
Start battery	2x 12V
Service battery	2x 6V 216 A/h semi tracti
Battery charger	60 A/h
Shorepower	with cable
Trimtabs	yes

## NAVIGATION

Compass	yes
Depth sounder	Raymarine ST40
Log	Raymarine ST40
VHF	Raymarine Ray240E
Autopilot	Raymarine ST6002 Smartpilot
Rudder angle indicator	yes
Radar/GPS/plotter	Raymarine C80

## EQUIPMENT

Fixed windscreen	yes
Sprayhood	yes
Cockpit cover	yes
Cockpit cushions	yes
Cockpit chairs	yes
Bathing platform	yes
Boarding ladder	stainless steel
Anchor	CQR Plough
Anchor chain	yes
Windlass	electrical Simpson Lawrence
Deck wash	yes



Sea railing	stainless steel
Grab rail (superstructure)	stainless steel
Railing side opening gates	yes
Safety harness	yes
Lifebuoy	yes
Wiper	with waterspray
Horn	yes
Fenders	with fender holders
Mooring lines	yes
TV	Samsung flatscreen
TV receiver	Digitenne
Cockpit speakers	yes
Speakers in salon	yes
Clock - barometer	Wempe
Extinguisher in engine room	yes



# BROOM 365





# BROOM 365



# BROOM 365



# BROOM 365





# BROOM 365



# BROOM 365





# BROOM 365



# BROOM 365



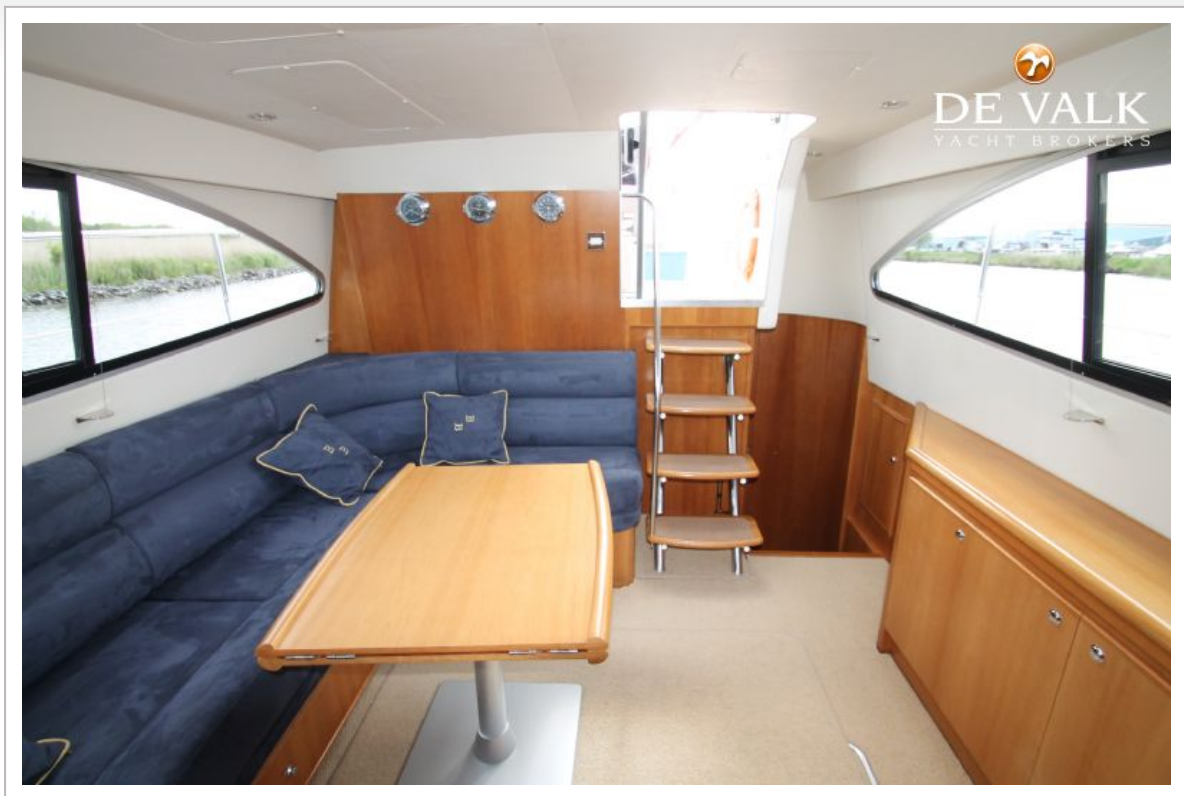


# BROOM 365

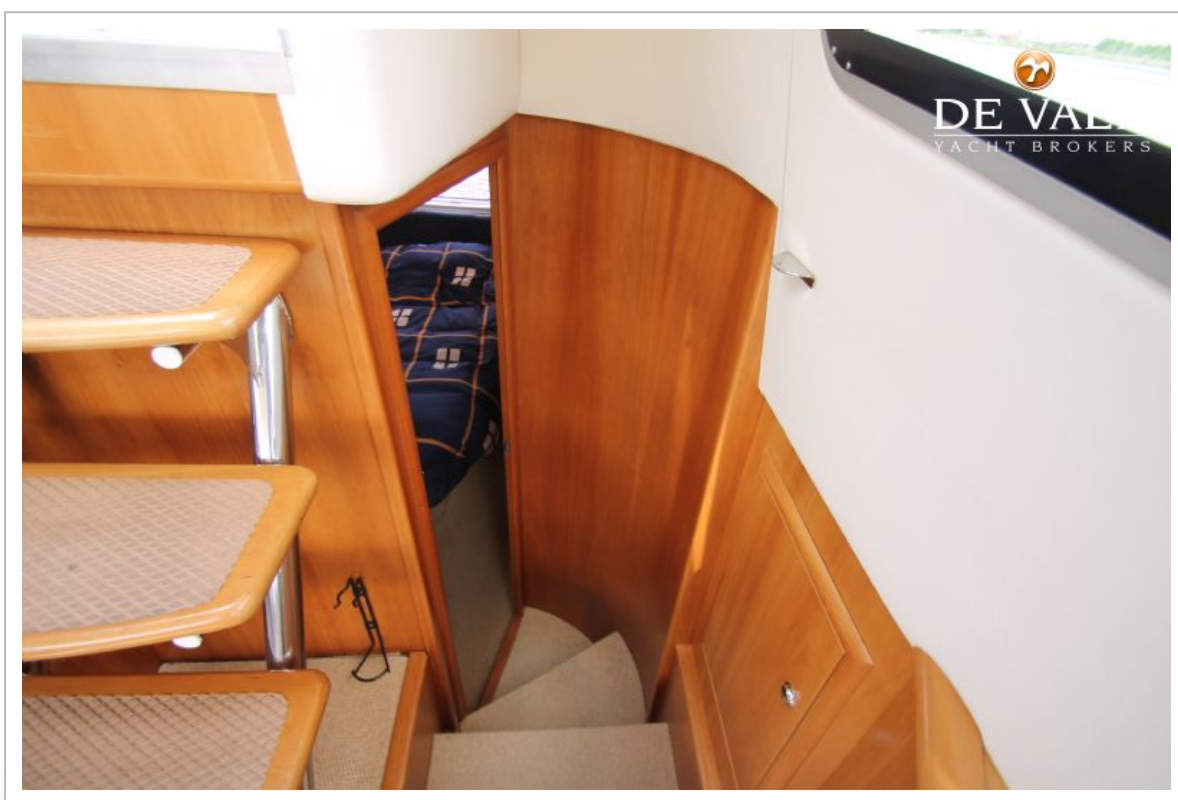




# BROOM 365

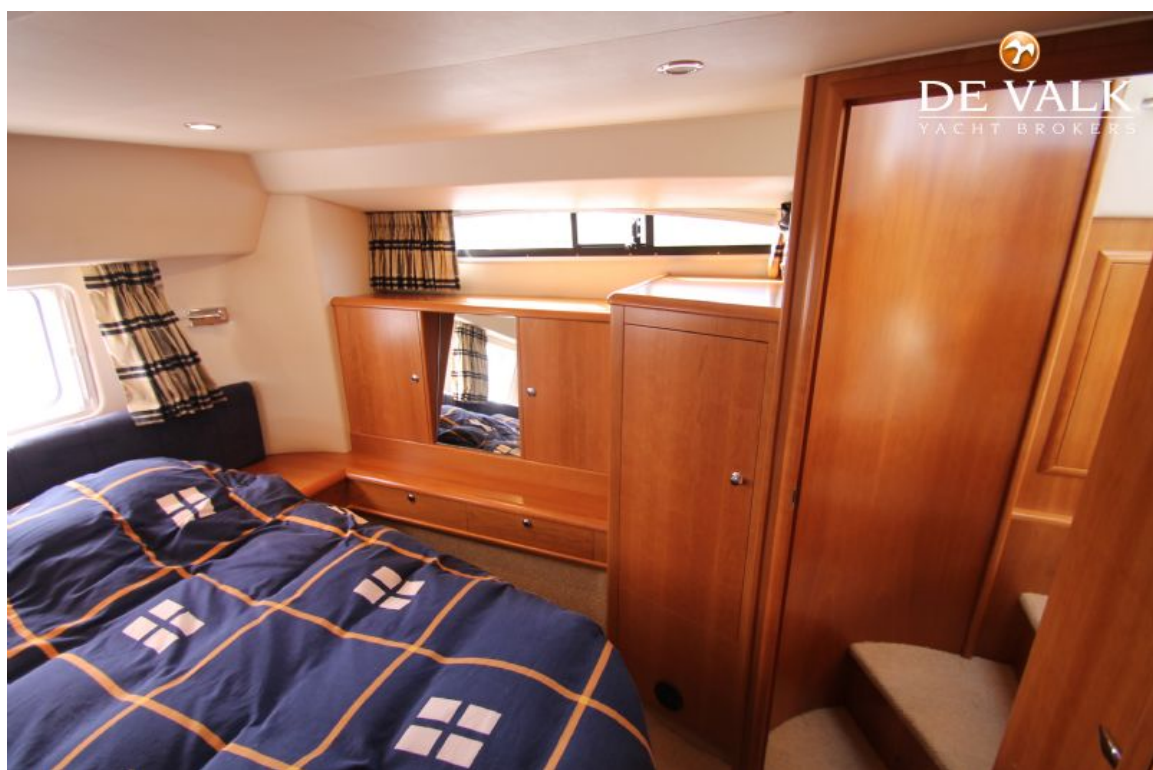


## BROOM 365

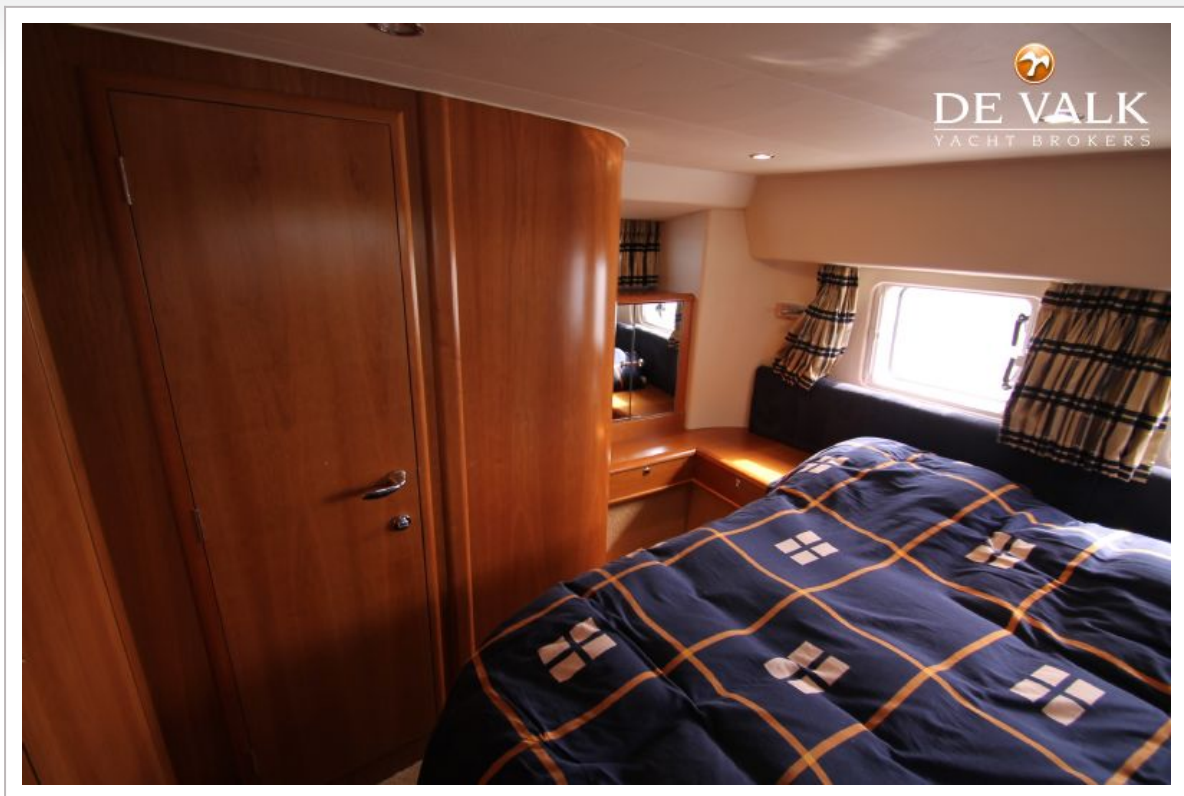




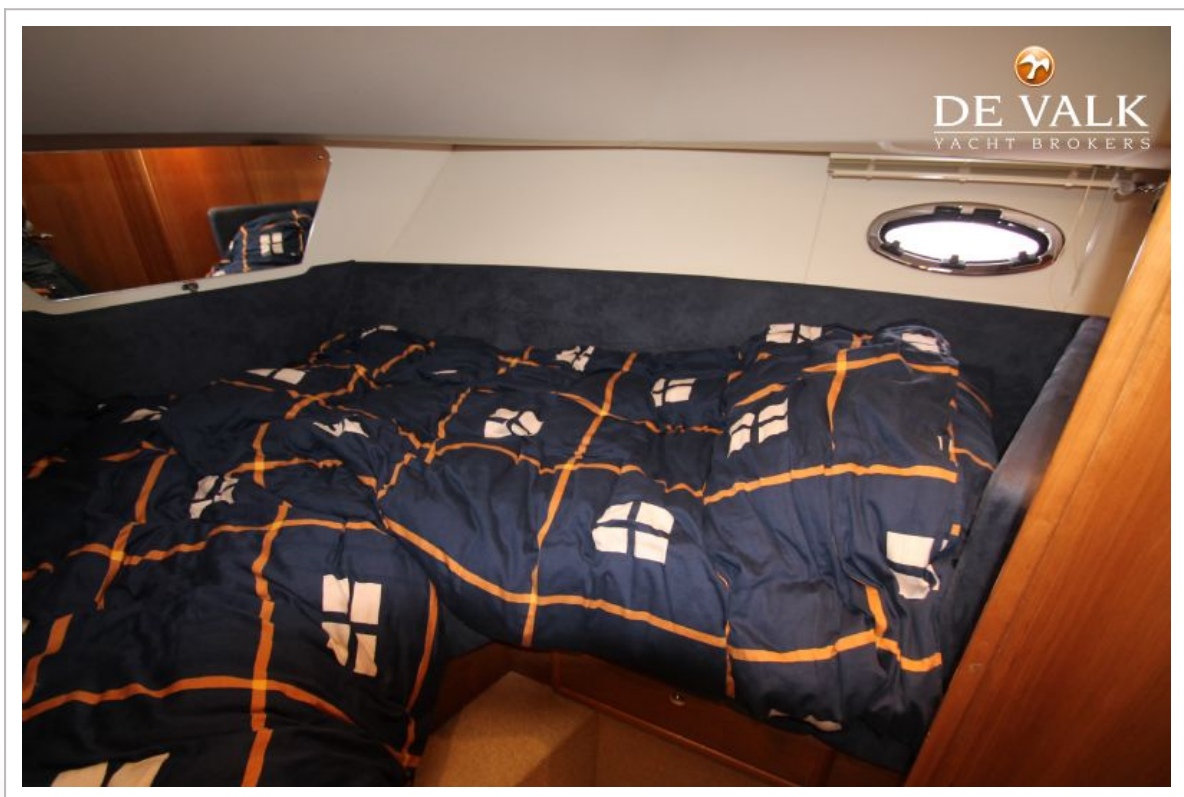
## BROOM 365



# BROOM 365







## BROOM 365



