



DE VALK
YACHT BROKERS



BAVARIA 44 VISION



DE VALK
YACHT BROKERS

BAVARIA 44 VISION

BROKER'S COMMENTS

This well equipped Bavaria 44 Vision has more to offer than just space. The finishing is nicer, better and has more quality throughout. This 3 cabin Bavaria 44 Vision offers much for a large family or a big crew of friends. Her interior woodwork is nice and warm and with the marine colored upholstery, very inviting.

Reinier van der Wolf

SPECIFICATIONS

Dimensions	13.70 x 4.39 x 1.80 (m)	Builder	Bavaria Yachts GmbH
Built	2006	Cabins	3
Material	GRP	Berths	6
Engine(s)	1 x Volvo Penta D2-55D diesel	Hp/Kw	55.00 (hp), 40.42 (kw)
Asking price	sold (VAT)	Lying	at sales office

CONTACT

Sales office	De Valk Monnickendam B.V.	Telephone	+31 (0)299 65 63 50
Address	Hoogedijk 6 1145 PM Katwoude NL	E-mail	monnickendam@devalk.nl

DISCLAIMER

These particulars are given in good faith as supplied but cannot be guaranteed.



GENERAL

Model	BAVARIA 44 VISION
Type	sailing yacht
LOA (m)	13,70
LWL (m)	11,55
Beam (m)	4,39
Draft (m)	1,80
Air draft (m)	23,00
Headroom (m)	2,11
Year built	2006
Builder	Bavaria Yachts GmbH
Country	Germany
Designer	J & J Design
Displacement (t)	10,4
Ballast (tonnes)	3,36
CE norm	A
Hull material	GRP
Hull colour	white
Hull shape	round-bilged
Keel type	fin keel with bulb
Superstructure material	GRP
Rubbing strake	wood
Deck material	GRP
Deck finish	teak
Superstructure deck finish	teak
Cockpit deck finish	teak
Antifouling (year)	2016
Dorades	yes
Window frame	aluminium
Window material	polycarbonate
Deckhatch	yes



Fuel tank (litre)	polyethylene 210
Level indicator (fuel tank)	yes
Freshwater tank (litre)	polyethylene 460
Level indicator (freshwater)	yes
Blackwater tank (litre)	polyethylene 2 x
Level indicator (blackwater)	yes
Blackwater tank extraction	deck extraction + uw line
Wheel steering	chain steering 2 x
Emergency tiller	yes
Extra info	Saildrive + bowthruster of 2014.

ACCOMMODATION

Cabins	3
Berths	6
Interior	mahogany
Floor	teak and holly
Saloon	yes
Headroom saloon (m)	2,11
Heating	diesel ducted hot air Webasto (2015 serviced)
Chart table	yes
Aft Cabin	yes
Dinette	yes
Galley	yes
Countertop	plastic
Sink	stainless steel
Cooker	calor gas 2 burner
Oven	yes
Fridge	with freezer compartment
Hot water system	220V + engine
Water pressure system	electrical
Kettle	yes



Coffee maker	yes
Crockery	yes
Owners cabin	French bed
Bed length (m)	2,10
Wardrobe	hanging/drawers/shelves
Bathroom	en suite
Toilet	en suite
Toilet system	manual
Wash basin	in the bathroom
Shower	en suite
Guest cabin 1	double bed
Bed length (m)	2,20
Wardrobe	hanging and shelves
Bathroom	shared
Toilet	shared
Toilet system	manual
Wash basin	in the bathroom
Shower	shared
Guest cabin 2	double bed
Bed length (m)	2,20
Wardrobe	hanging and shelves

MACHINERY

No of engines	1
Make	Volvo Penta
Type	D2-55D
HP	55,00
kW	40,42
Fuel	diesel
Year installed	2006
Maximum speed (kn)	8



Cruising speed (kn)	6
Consumption (l/hr)	4
Engine cooling system	freshwater heat exchanger
Drive	sail-drive
Engine controls	bowden cable
Bowthruster	electric Vetus 95 Kgf
Exhaust	watercooled
Propeller type	fixed
Propeller blades	3
Manual bilge pump	yes
Electric bilge pump	yes
Bilge alarm	yes
Electrical installation	220/12 volt
Start battery	changed fall 2014 1
Service battery	changed fall 2014 3
Bowthruster battery	changed fall 2014 1 Optima
Battery monitor	yes
Battery charger/inverter	Victron Multiplus
Shorepower	with cable

NAVIGATION

Compass	yes
Depth sounder	Simrad 1512
Log	Simrad 1512
Windset	Simrad 1512
VHF	yes
VHF handheld	Simrad
Autopilot	Simrad
Rudder angle indicator	yes
Radar	Simrad 4 Kw dome
GPS	Simrad CX 34



Plotter	Simrad CX 34
Radar/GPS/plotter	Simrad CX34
Electronic chart(s)	C-map
Extra info	yes

EQUIPMENT

Sprayhood	yes
Cockpit cover	yes
Cockpit table	yes
Bathing platform	yes
Boarding ladder	stainless steel
Deck shower	yes
Anchor	Danforth
Anchor chain	40 m.
Sea railing	wire
Grab rail (superstructure)	stainless steel
Railing side opening gates	yes
Pushpit	yes
Pulpit	yes
Lifejackets	6 x
Fenders	yes
Mooring lines	yes
Alarm system	yes
Radio-cd player	yes
Cockpit speakers	yes
Speakers in salon	yes
Clock - barometer	yes
Fire extinguisher	yes

RIGGING

Rigging	fractional
---------	------------



Standing rigging	wire
Brand mast	Seldén
Material mast	aluminium
Spreaders	2 x
Fully battened mainsail	vertical
Stoway mast	yes
Genoa	yes
Genoa furler	Furlex
Reefing System	main in-mast furling
Backstay adjuster	mechanical
Boomvang	gasspring
Primary sheet winch	yes
Secondary sheet winch	yes



BAVARIA 44 VISION



BAVARIA 44 VISION



BAVARIA 44 VISION



BAVARIA 44 VISION



BAVARIA 44 VISION





BAVARIA 44 VISION



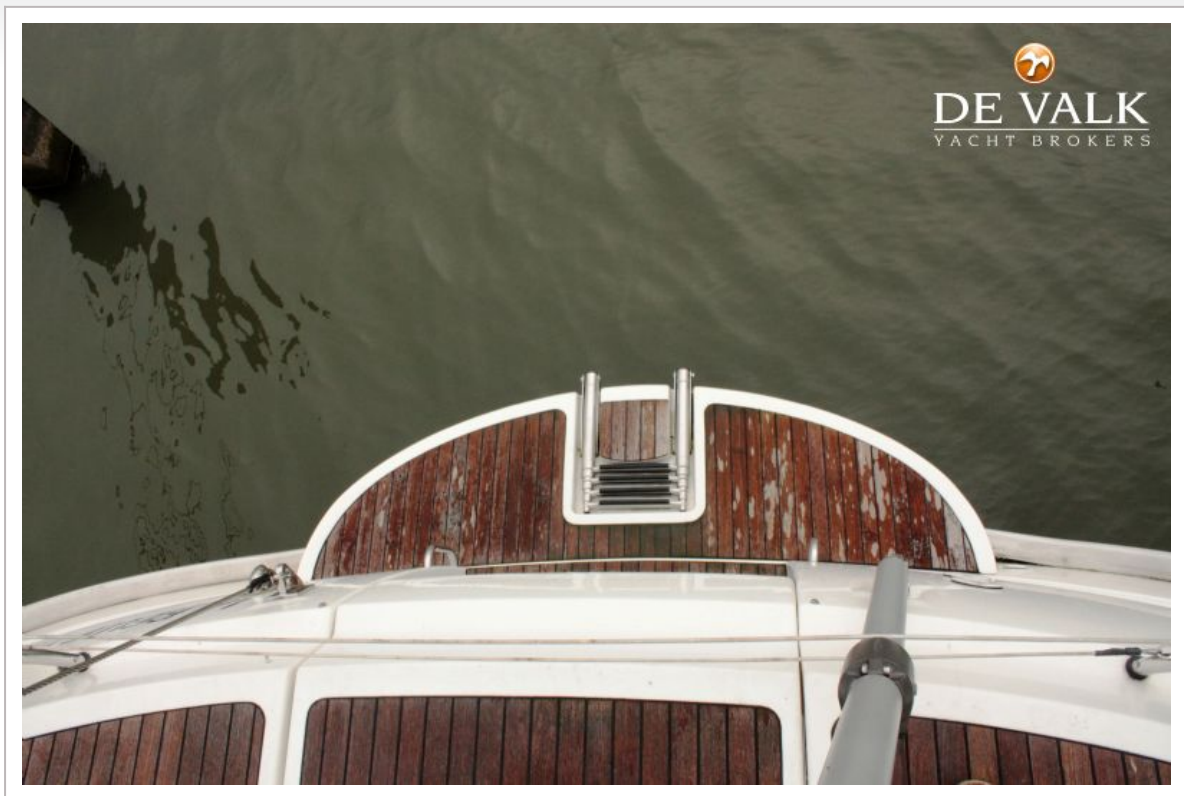
BAVARIA 44 VISION



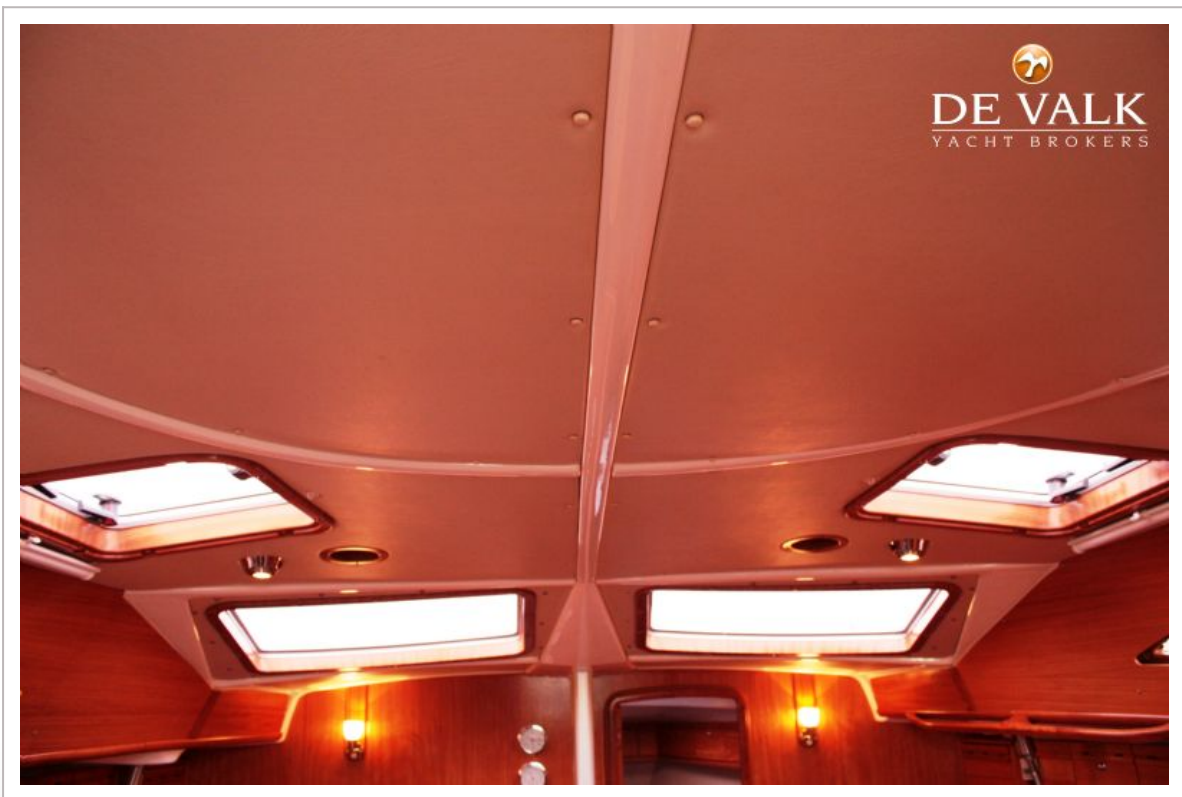
BAVARIA 44 VISION



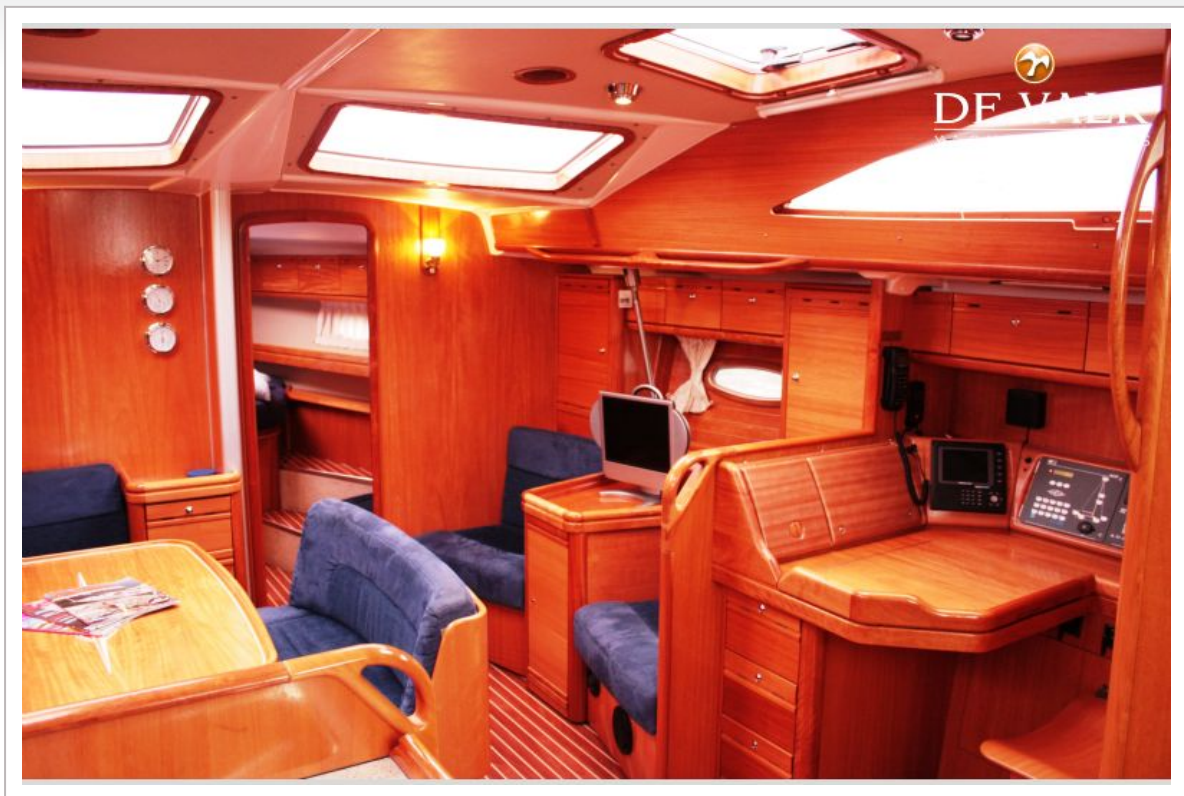
BAVARIA 44 VISION



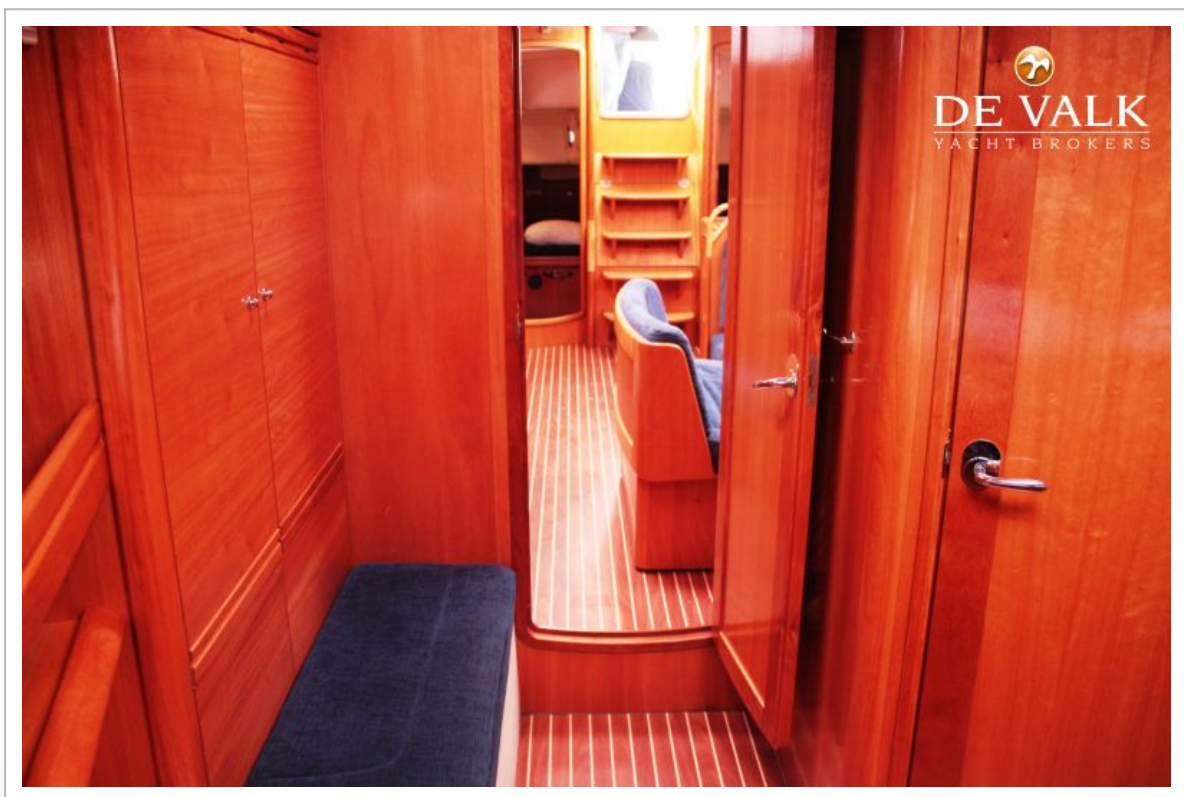
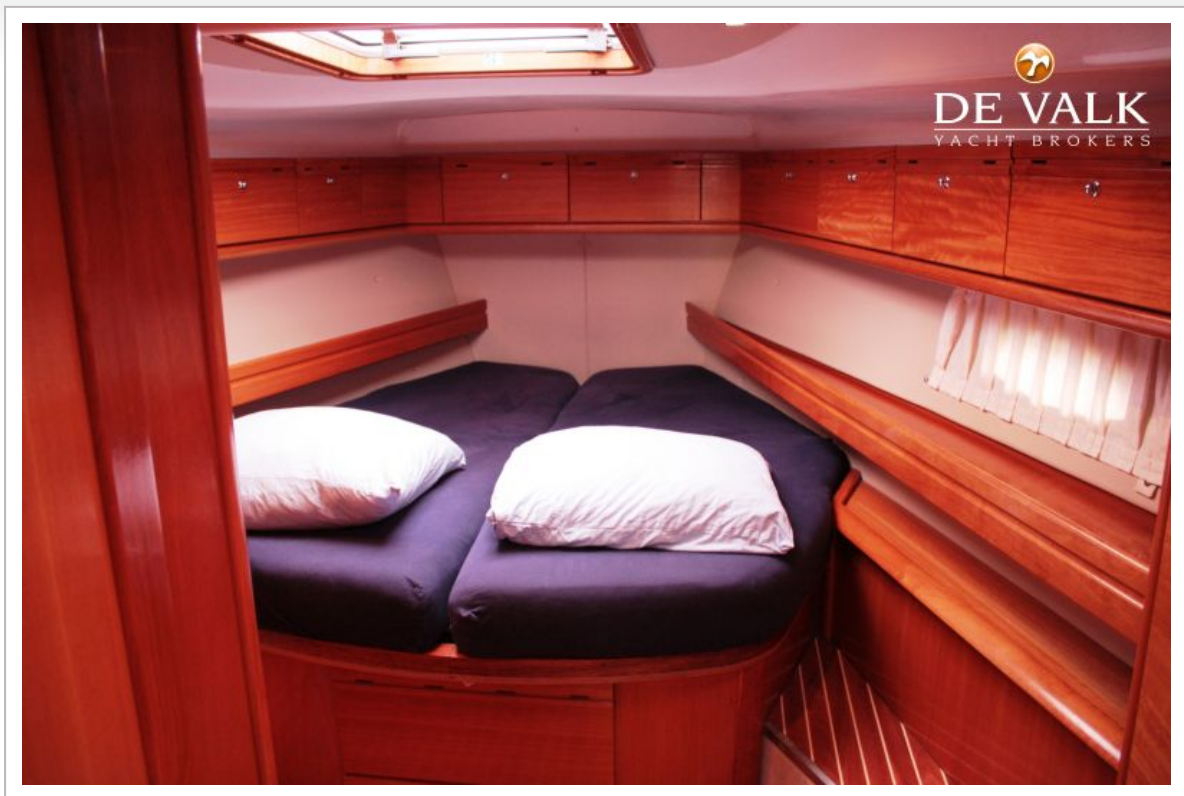
BAVARIA 44 VISION



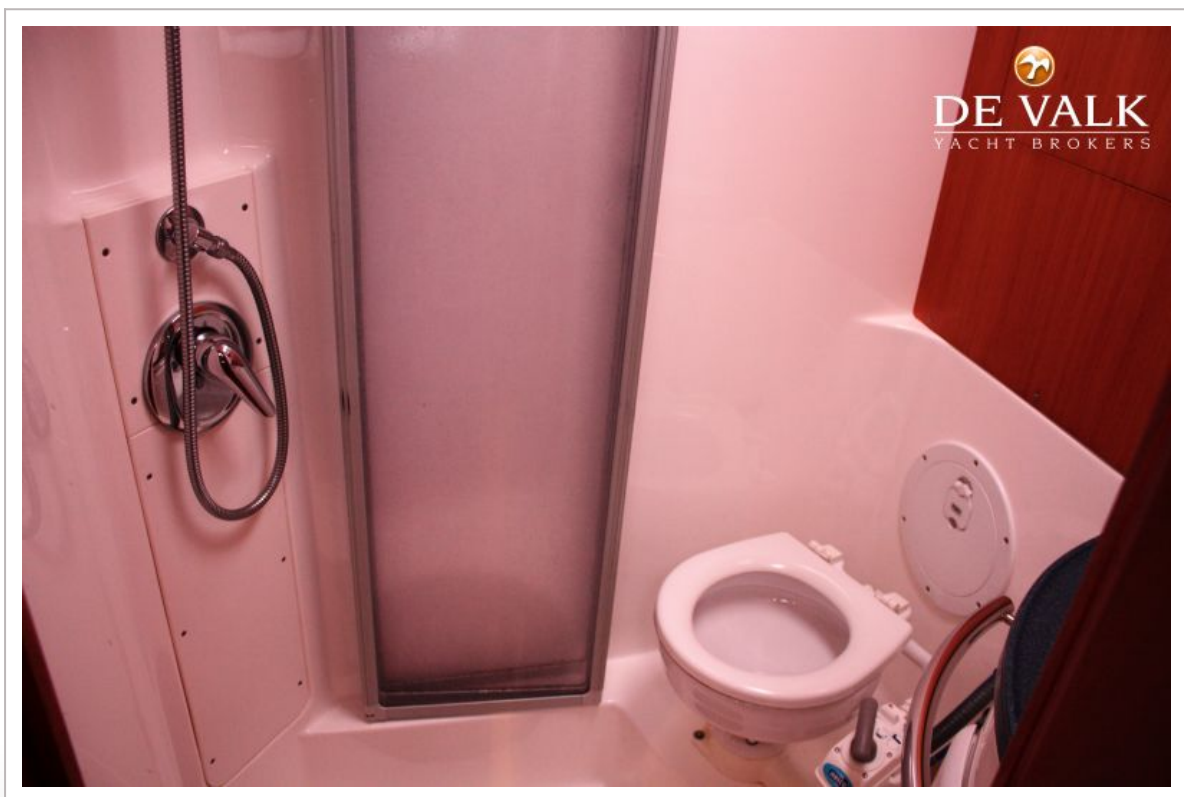
BAVARIA 44 VISION



BAVARIA 44 VISION



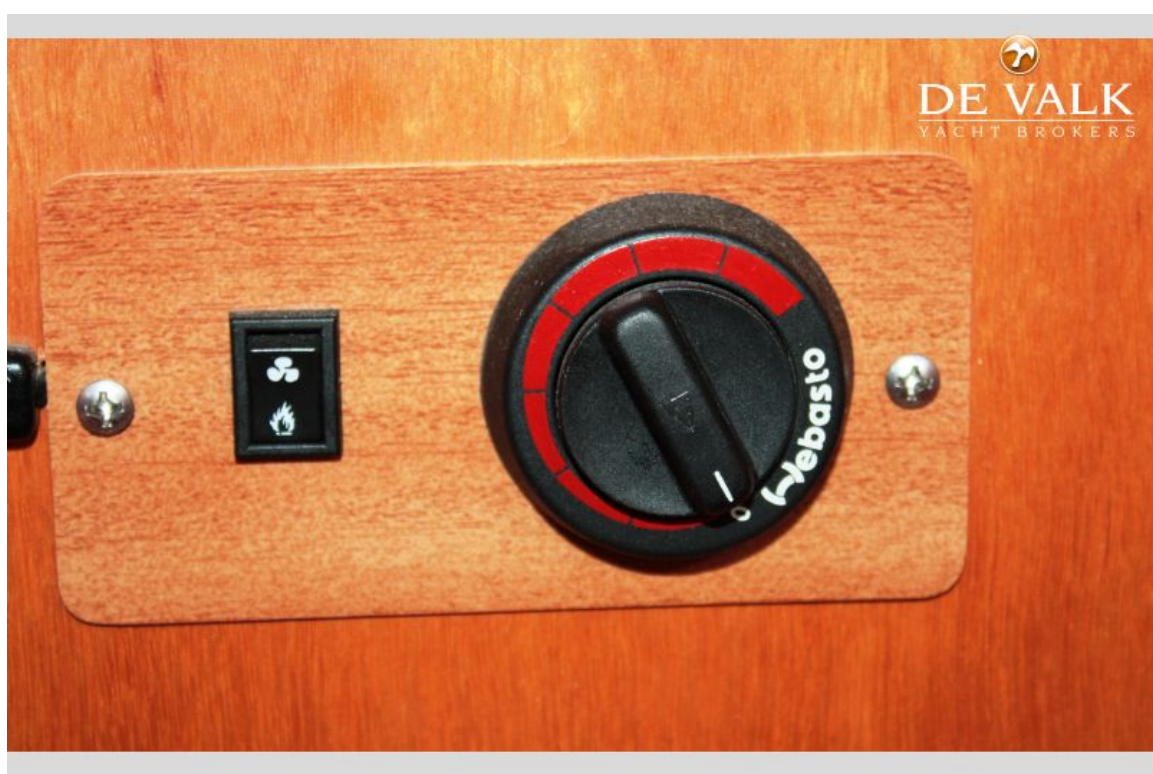
BAVARIA 44 VISION



BAVARIA 44 VISION



BAVARIA 44 VISION



BAVARIA 44 VISION



BAVARIA 44 VISION



BAVARIA 44 VISION

