



TRYVIA 1500 KOTTER

TRYVIA 1500 KOTTER

BROKER'S COMMENTS

Tryvia 1500 kotter "Bellissimo" is a well maintained steel round bilged motor yacht. Built by Tryvia Jachten BV, the Netherlands. Comfortable interior with two cabins, double glazed windows and Kabola central heating. Furthermore she is equipped with a Vetus Deutz diesel engine, generator and electric bowthruster.

Arne Doodeman

SPECIFICATIONS

Dimensions	14.98 x 4.80 x 1.20 (m)	Builder	Tryvia Jachten BV
Built	2004	Cabins	2
Material	Steel	Berths	4
Engine(s)	1 x Vetus Deutz DTA64625E diesel	Hp/Kw	191.84 (hp), 141.00 (kw)
Asking price	sold (VAT)	Lying	at sales office

CONTACT

Sales office	De Valk Sneek	Telephone	+31 (0)515 42 80 30
Address	Zwolsmanweg 7 8606 KC Sneek NL	E-mail	sneek@devalk.nl

DISCLAIMER

These particulars are given in good faith as supplied but cannot be guaranteed.



TRYVIA 1500 KOTTER

GENERAL

Model	TRYVIA 1500 KOTTER
Type	motor yacht
LOA (m)	14,98
LWL (m)	13,10
Beam (m)	4,80
Draft (m)	1,20
Air draft (m)	3,20
Year built	2004
Builder	Tryvia Jachten BV
Country	The Netherlands
Displacement (t)	28
CE norm	B
Hull material	steel
Hull colour	blue
Hull thickness (mm)	5 & 6 mm
Hull shape	round-bilged
Superstructure material	steel
Superstructure (mm)	5 mm
Deck plate thickness (mm)	5 mm
Rubbing strake	stainless steel
Deck material	steel
Deck finish	non-skid paint Teak &
Window frame	aluminium Gebo
Window material	double glazing
Deckhatch	2x Gebo
Portholes	aluminium 12x Gebo
Insulation	rockwool
Radar arch	collapsible
Fuel tank (litre)	steel Ca. 2000 l.
Level indicator (fuel tank)	Vetus



Freshwater tank (litre)	1200 l.
Level indicator (freshwater)	Vetus
Blackwater tank (litre)	250 l.
Level indicator (blackwater)	Vetus
Blackwater tank extraction	deck extraction + uw line
Wheel steering	hydraulic
Outside helm position	yes

ACCOMMODATION

Cabins	2
Berths	4
Interior	cherry
Floor	carpet
Aft deck	yes
Saloon	yes
Heating	central heating Kabola B12 tap
Dinette	yes
Opening door to aft deck	yes
Galley	yes
Countertop	yes
Sink	stainless steel
Cooker	electric Siemens 4-burner
Extractor	yes
Microwave	Etna
Fridge	Coolmatic
Hot water system	on central heating
Water pressure system	electrical
Owners cabin	French bed
Wardrobe	hanging and shelves
Bathroom	en suite
Toilet	en suite



Toilet system	electric Tecma
Wash basin	in the bathroom
Shower	en suite
Guest cabin 1	v-bed
Toilet	en suite
Toilet system	electric Tecma
Wash basin	at the toilet
Washing machine	AEG

MACHINERY

No of engines	1
Make	Vetus Deutz
Type	DTA64625E
HP	191,84
kW	141,00
Fuel	diesel
Engine hours	2661
Engine cooling system	freshwater heat exchanger
Drive	shaft
Engine controls	bowden cable Morse
Gearbox	hydraulic ZF 65-2.5
Bowthruster	electric
Exhaust	watercooled
Thrust bearing	Python drive
Propeller type	fixed
Propeller blades	4-bladed
Propeller shaft material	stainless steel 50 mm
Shaft lubrication	grease
Electric bilge pump	yes
Generator	Fisher Panda 8 Kva
Start battery	2x



Service battery	4x
Generator battery	1x
Bowthruster battery	2x
Battery monitor	Victron BMV-501
Battery charger	Studer 24/60
Inverter	Sinewave
Shorepower	with cable

NAVIGATION

Depth sounder	Raymarine ST60
VHF	Simrad RS81
Rudder angle indicator	VDO
Plotter/GPS	Raymarine C70
Searchlight	yes

EQUIPMENT

Sprayhood	yes
Bimini	yes
Cockpit cushions	yes
Boarding ladder	stainless steel
Anchor	yes
Anchor chain	yes
Windlass	electrical Quick
Sea railing	stainless steel
Grab rail (superstructure)	stainless steel
Railing side opening gates	2x
Wiper	3x Vetus
Horn	yes
Fenders	yes
Mooring lines	yes
TV	Grundig



TRYVIA 1 500 KOTTER

Satellite

Radio-cd player

Fire extinguisher

Extinguisher in engine room

Oyster satdome

Sony

yes

yes



TRYVIA 1500 KOTTER



TRYVIA 1500 KOTTER



TRYVIA 1500 KOTTER



TRYVIA 1500 KOTTER



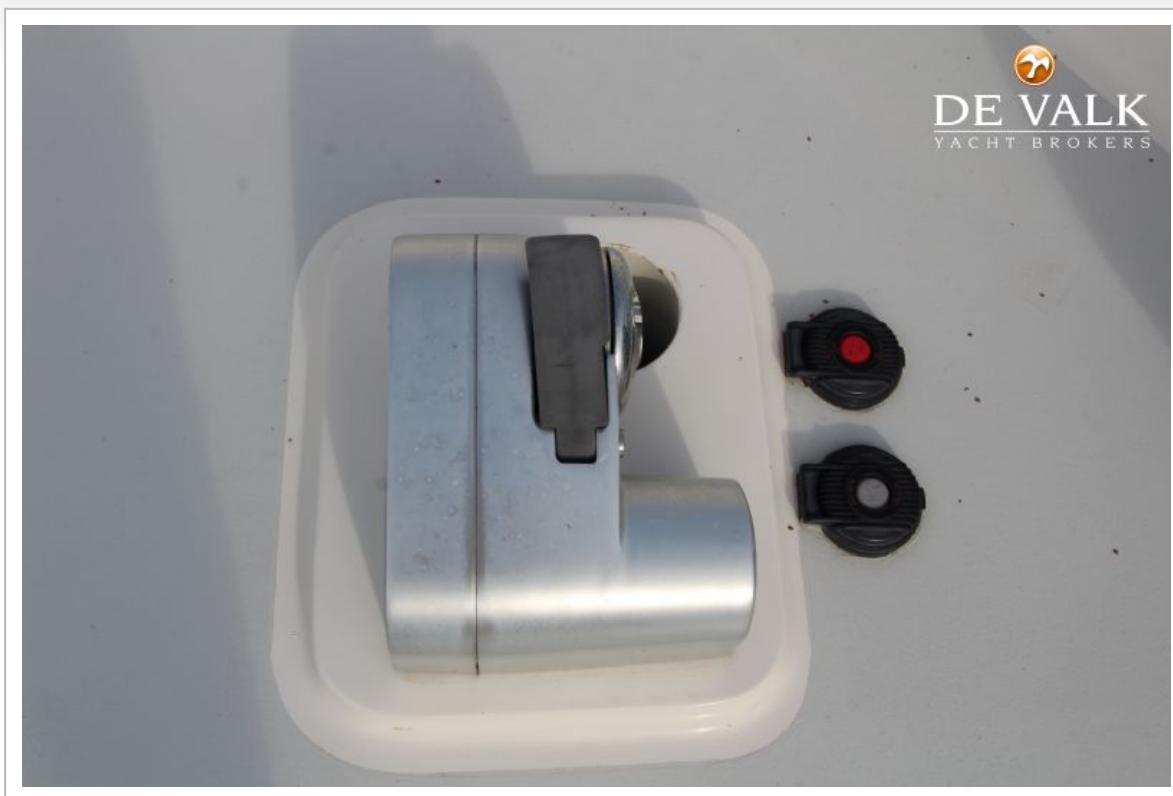
TRYVIA 1500 KOTTER



TRYVIA 1500 KOTTER



TRYVIA 1500 KOTTER



TRYVIA 1500 KOTTER



TRYVIA 1500 KOTTER



TRYVIA 1500 KOTTER



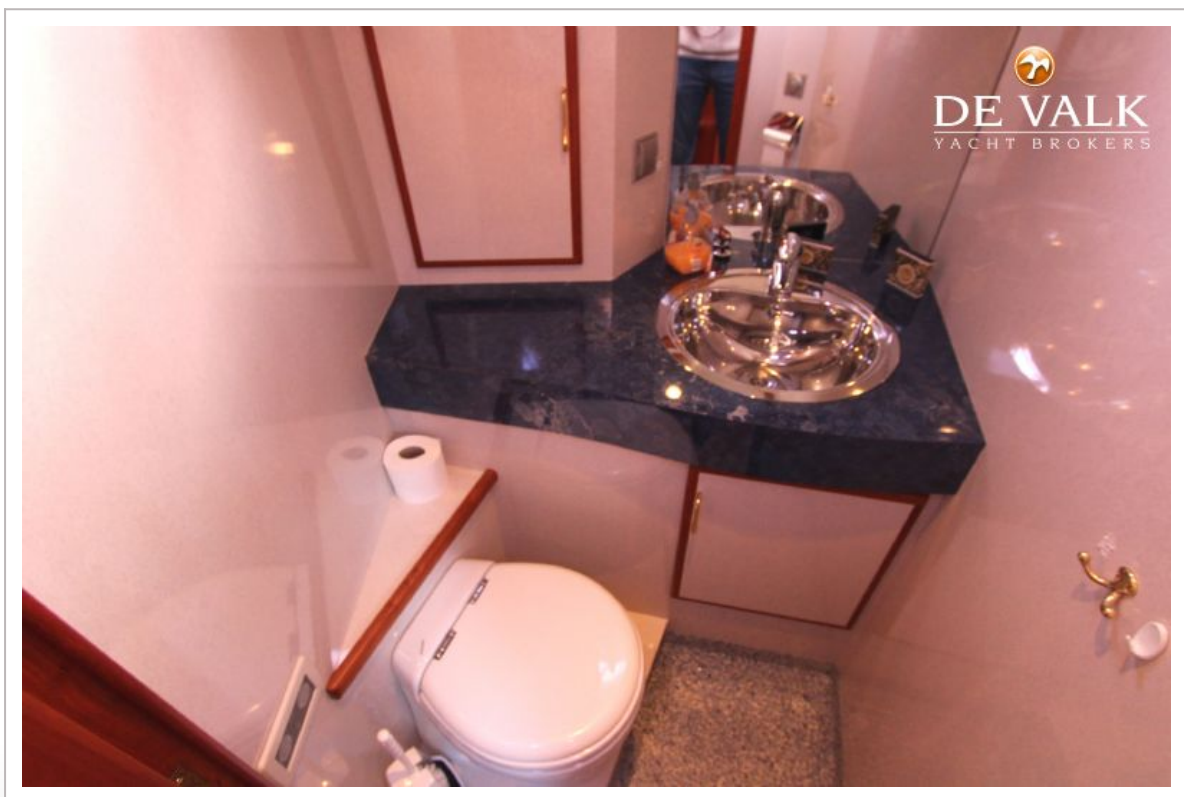
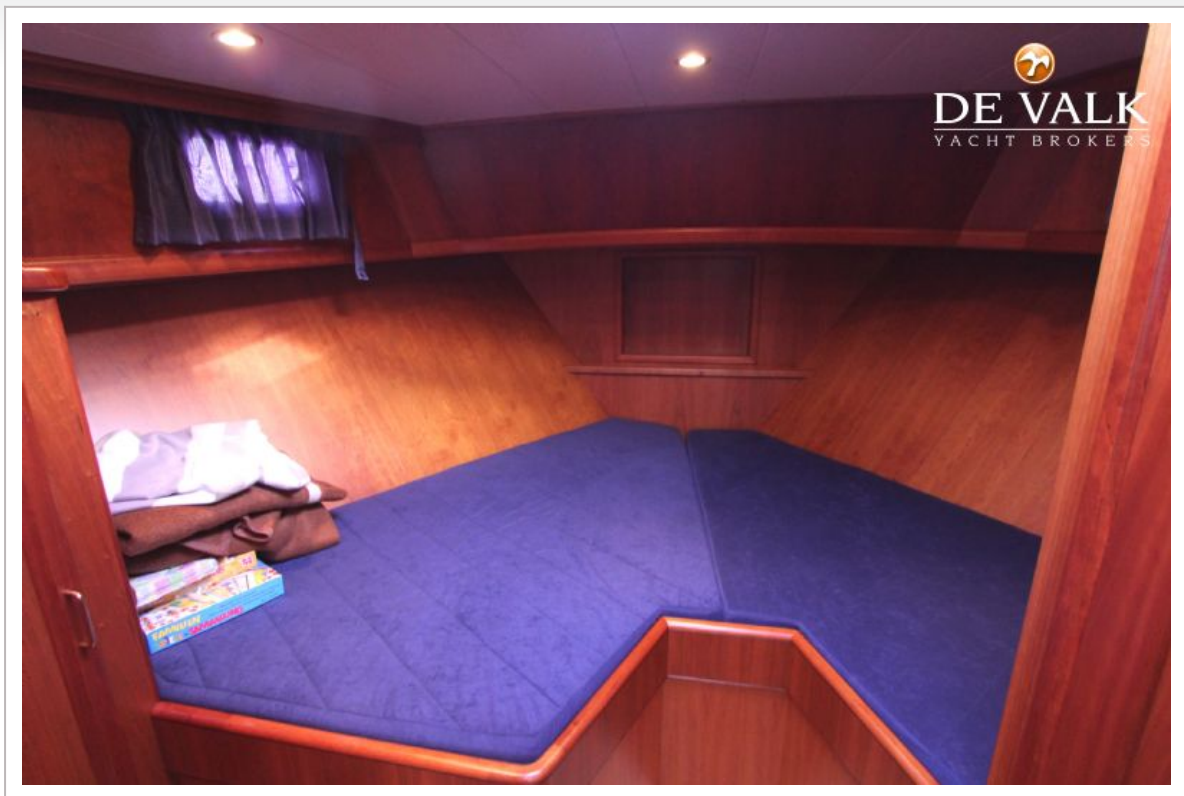
TRYVIA 1500 KOTTER



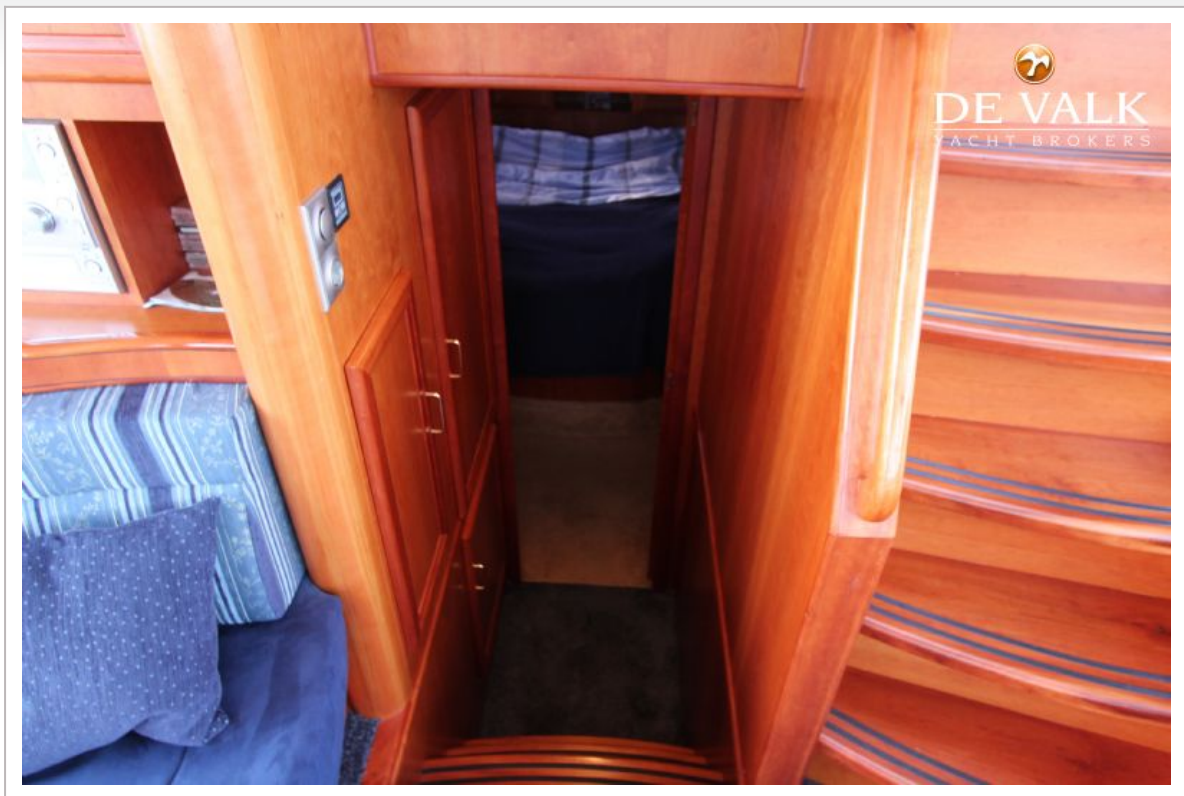
TRYVIA 1500 KOTTER



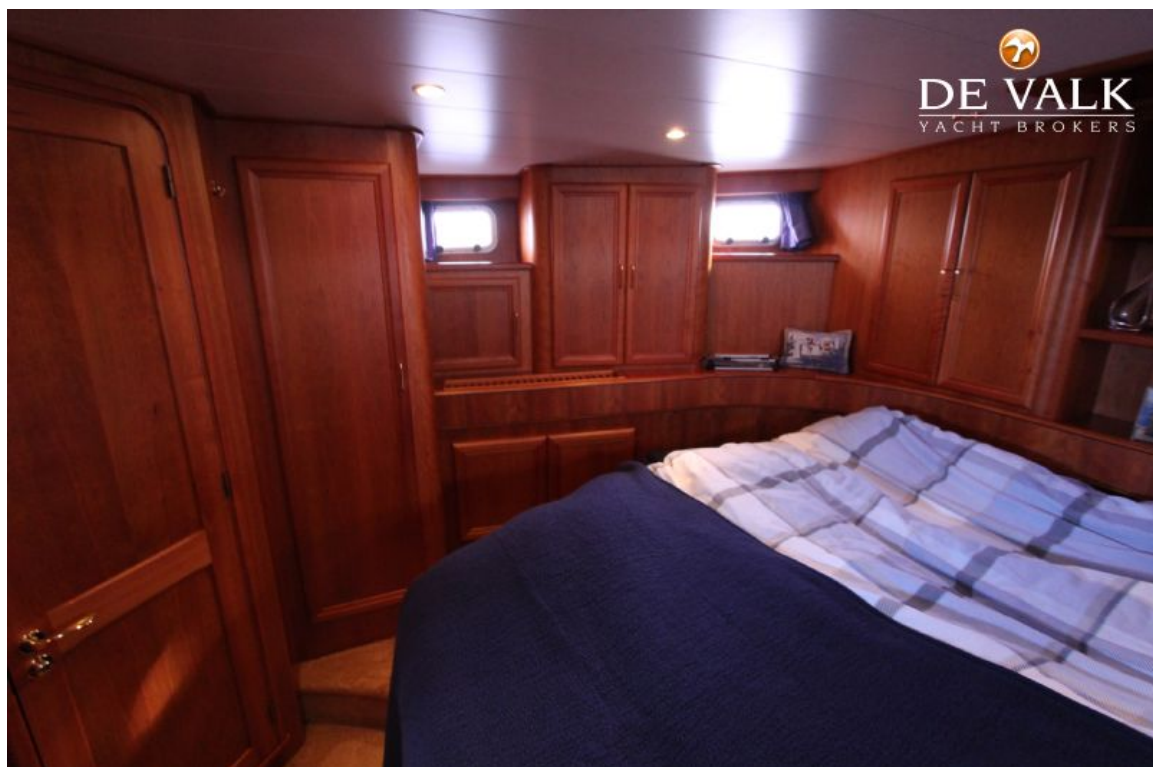
TRYVIA 1500 KOTTER



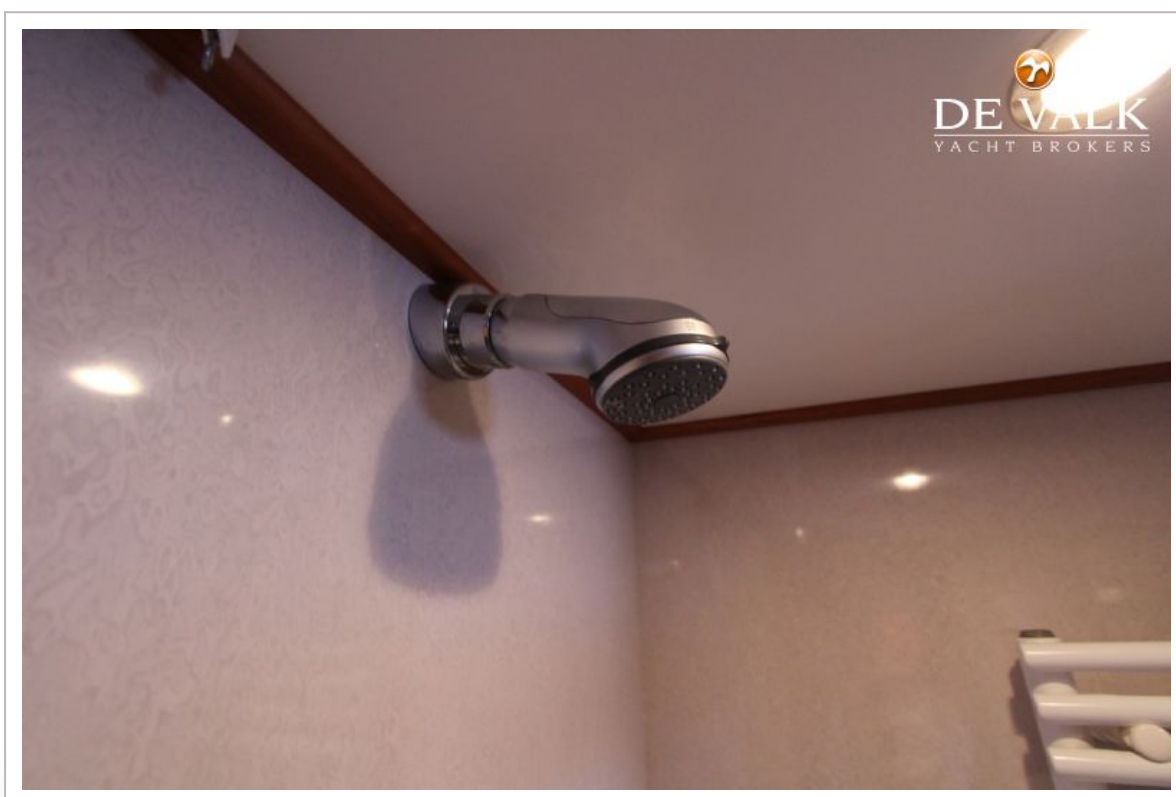
TRYVIA 1500 KOTTER



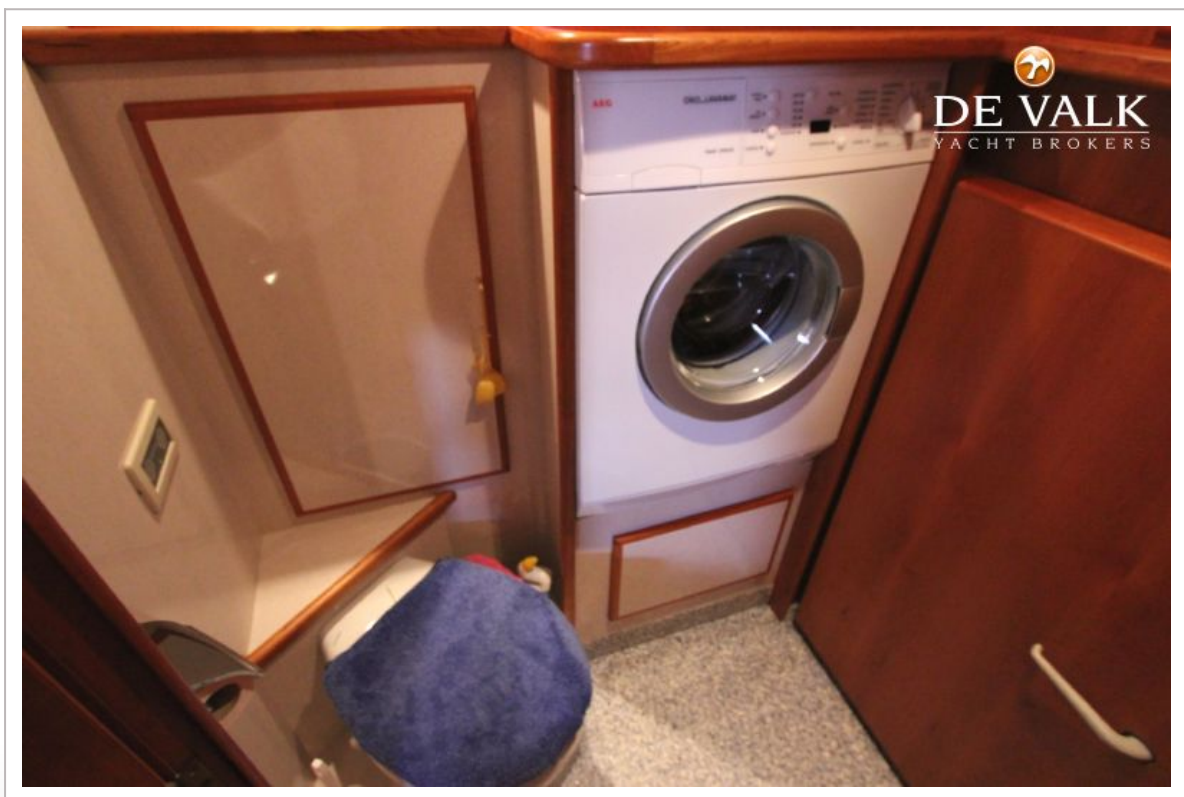
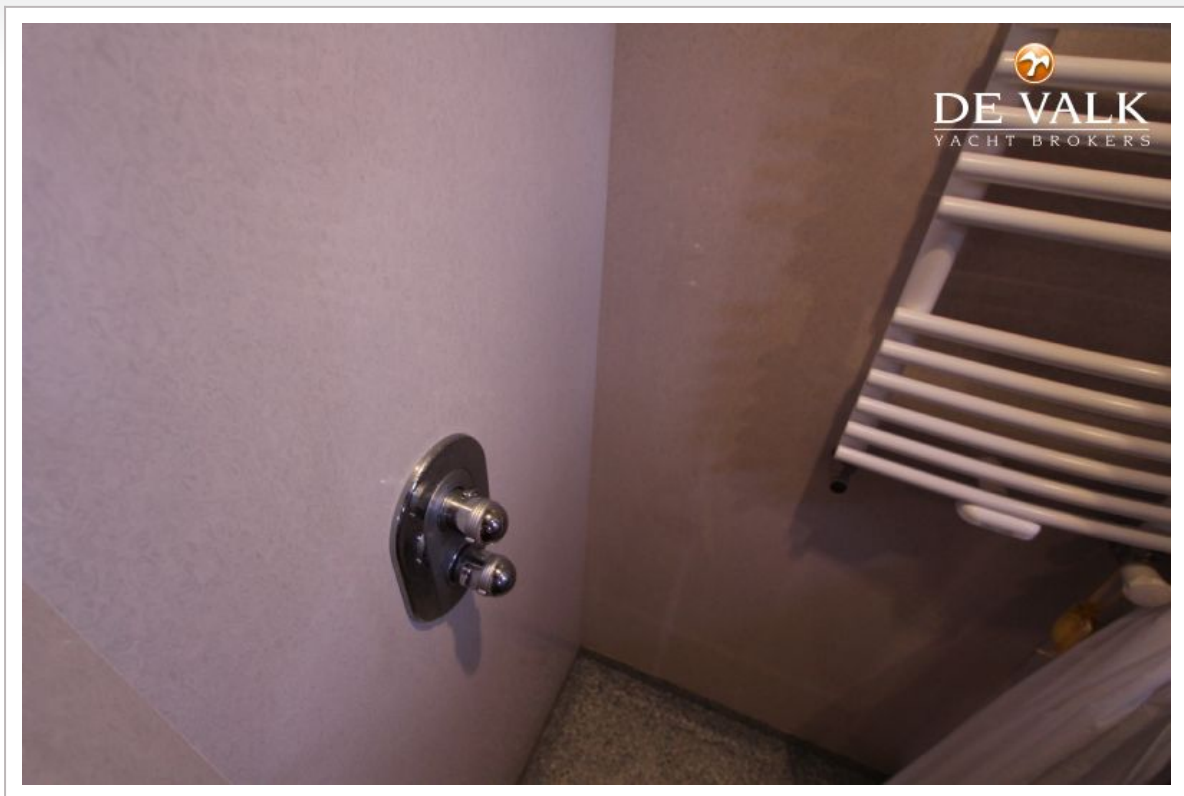
TRYVIA 1500 KOTTER



TRYVIA 1500 KOTTER



TRYVIA 1500 KOTTER



TRYVIA 1500 KOTTER

