



DE VALK  
YACHT BROKERS



## ABIM CLASSIC 118



DE VALK  
YACHT BROKERS

## BROKER'S COMMENTS

This very well maintained Abim Classic 118 is ready to give you an unforgettable time on the water: she is ready to go! This Abim Classic 118 is equipped with a silent 5-cylinder Volvo Penta diesel engine, electric bow- and sternthruster, Mastervolt Whisper generator and a spacious lounge. Because of this, you can enjoy an extremely comfortable stay on board and enjoy the European inland waterways.

*Peter Spruyt*

## SPECIFICATIONS

<b>Dimensions</b>	11.85 x 4.05 x 1.00 (m)	<b>Builder</b>	Abim Watersport Ossenzijl
<b>Built</b>	2007	<b>Cabins</b>	1
<b>Material</b>	Steel	<b>Berths</b>	4
<b>Engine(s)</b>	1 x Volvo-Penta D3-1101-C diesel	<b>Hp/Kw</b>	110.00 (hp), 80.85 (kw)
<b>Asking price</b>	sold (VAT )	<b>Lying</b>	at sales office

## CONTACT

<b>Sales office</b>	De Valk Sneek	<b>Telephone</b>	+31 (0)515 42 80 30
<b>Address</b>	Zwolsmanweg 7 8606 KC Sneek NL	<b>E-mail</b>	sneek@devalk.nl

## DISCLAIMER

These particulars are given in good faith as supplied but cannot be guaranteed.



## GENERAL

Model	ABIM CLASSIC 118
Type	motor yacht
LOA (m)	11,85
Beam (m)	4,05
Draft (m)	1,00
Air draft (m)	2,45
Headroom (m)	2,00
Year built	2007
Builder	Abim Watersport Ossenzijl
Country	The Netherlands
Designer	P. Oord
Displacement (t)	11,5
CE norm	C
Hull material	steel
Hull colour	blue
Hull thickness (mm)	5 mm
Hull shape	multi hard chine
Keel type	box keel
Superstructure material	steel
Superstructure (mm)	4 mm
Rubbing strake	fender rope
Deck material	steel
Deck finish	anti-slip paint
Superstructure deck finish	anti-slip paint
Cockpit deck finish	anti-slip paint
Antifouling (year)	2013
Window frame	aluminium
Window material	glass
Portholes	aluminium
Insulation	foam 30 mm



<b>Mast can be lowered</b>	manual
<b>Fuel tank (litre)</b>	steel 500 l.
<b>Level indicator (fuel tank)</b>	yes
<b>Freshwater tank (litre)</b>	stainless steel 600 l.
<b>Level indicator (freshwater)</b>	yes
<b>Blackwater tank (litre)</b>	polyethylene 200 l.
<b>Level indicator (blackwater)</b>	yes
<b>Wheel steering</b>	hydraulic
<b>Outside helm position</b>	hydraulic

## ACCOMMODATION

<b>Cabins</b>	1
<b>Berths</b>	4
<b>Interior</b>	teak
<b>Floor</b>	parquet Esdoorn
<b>Aft deck</b>	yes
<b>Saloon</b>	yes
<b>Headroom saloon (m)</b>	2.00 m.
<b>Heating</b>	diesel ducted hot air Webasto 5 kW
<b>Galley</b>	yes
<b>Countertop</b>	wood
<b>Sink</b>	stainless steel
<b>Cooker</b>	ceramic
<b>Oven</b>	oven/microwave combination Daewoo
<b>Microwave</b>	oven/microwave combination Daewoo
<b>Fridge</b>	with freezer compartment Coolmatic MDC 110 l.
<b>Hot water system</b>	220V + engine
<b>Water pressure system</b>	electrical
<b>Dishwasher</b>	Electrolux Intuition ESF2410
<b>Owners cabin</b>	French bed
<b>Bed length (m)</b>	2.00 m.



Wardrobe	hanging/drawers/shelves
Bathroom	separate
Toilet	separate
Toilet system	electric
Wash basin	at the toilet
Shower	separate
Washing machine	Indesit WIDL126

## MACHINERY

No of engines	1
Make	Volvo-Penta
Type	D3-1101-C
HP	110,00
kW	80,85
Fuel	diesel
Year installed	2007
Maximum speed (kn)	8
Cruising speed (kn)	6
Consumption (l/hr)	4
Engine hours	400
Engine cooling system	seawater
Drive	shaft
Engine controls	bowden cable
Gearbox	hydraulic ZF Marine 45-1-2.5
Bowthruster	electric 95 KgF
Sternthruster	electric 95 KgF
Exhaust	watercooled
Thrust bearing	yes
Propeller type	fixed
Propeller blades	4-bladed
Propeller shaft material	stainless steel



Shaft lubrication	water
Electric bilge pump	yes
Generator	Mastervolt Whisper 6,5 KW
Batteries	5x
Start battery	1x
Service battery	1x
Generator battery	1x
Bowthruster battery	1x
Sternthruster battery	1x
Battery charger	Victron Energy Multiplus 12V/3000VA/120 amp
Battery charger/inverter	Victron Energy
Shorepower	yes
Insulation transformer	Victron Energy Isolation Tranformer 3600

## NAVIGATION

Compass	yes
Depth sounder	yes
Log	yes
Rudder angle indicator	yes
Extra info	Digitenne

## EQUIPMENT

Sprayhood	yes
Bimini	yes
Bathing platform	yes
Boarding ladder	stainless steel
Bow ladder	Stainless steel
Anchor	yes
Anchor chain	25 m.
Windlass	manual Lofrance Royal RY 007038
Deck wash	yes



Davits	stainless steel
Davits controls	manual
Sea railing	stainless steel
Grab rail (superstructure)	stainless steel
Railing side opening gates	yes
Wiper	3x
Horn	electric
Fenders	yes
Mooring lines	yes
TV	Philips flatscreen
Radio-cd player	Blaupunkt
Speakers in salon	yes
Clock - barometer	yes
Fire extinguisher	3x



# ABIM CLASSIC 118





# ABIM CLASSIC 118



# ABIM CLASSIC 118





# ABIM CLASSIC 118

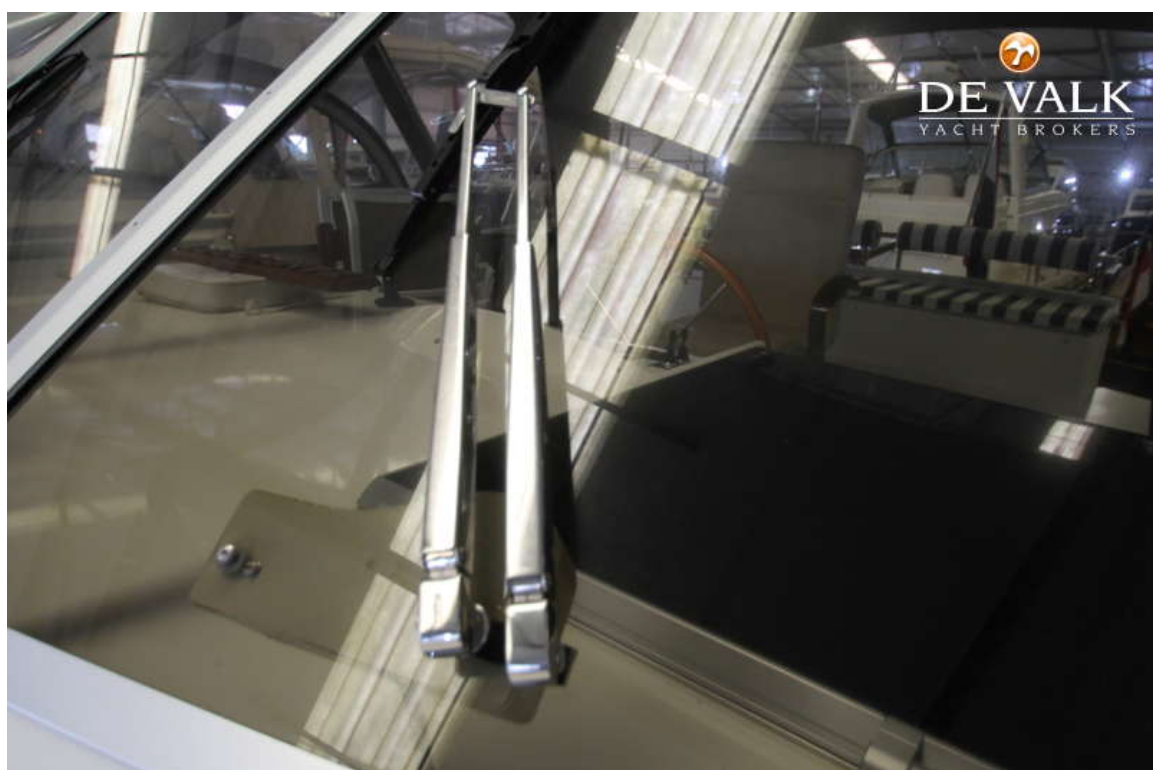


# ABIM CLASSIC 118





## ABIM CLASSIC 118



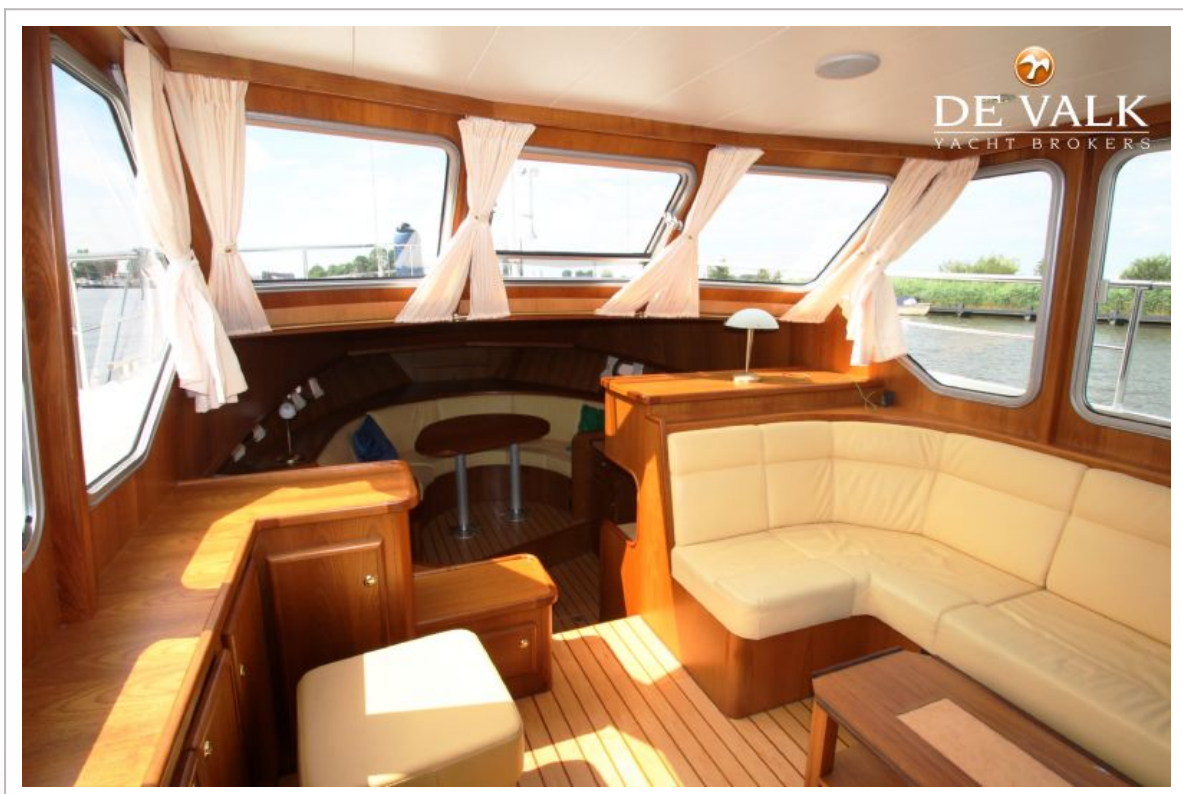


# ABIM CLASSIC 118





# ABIM CLASSIC 118





## ABIM CLASSIC 118



# ABIM CLASSIC 118

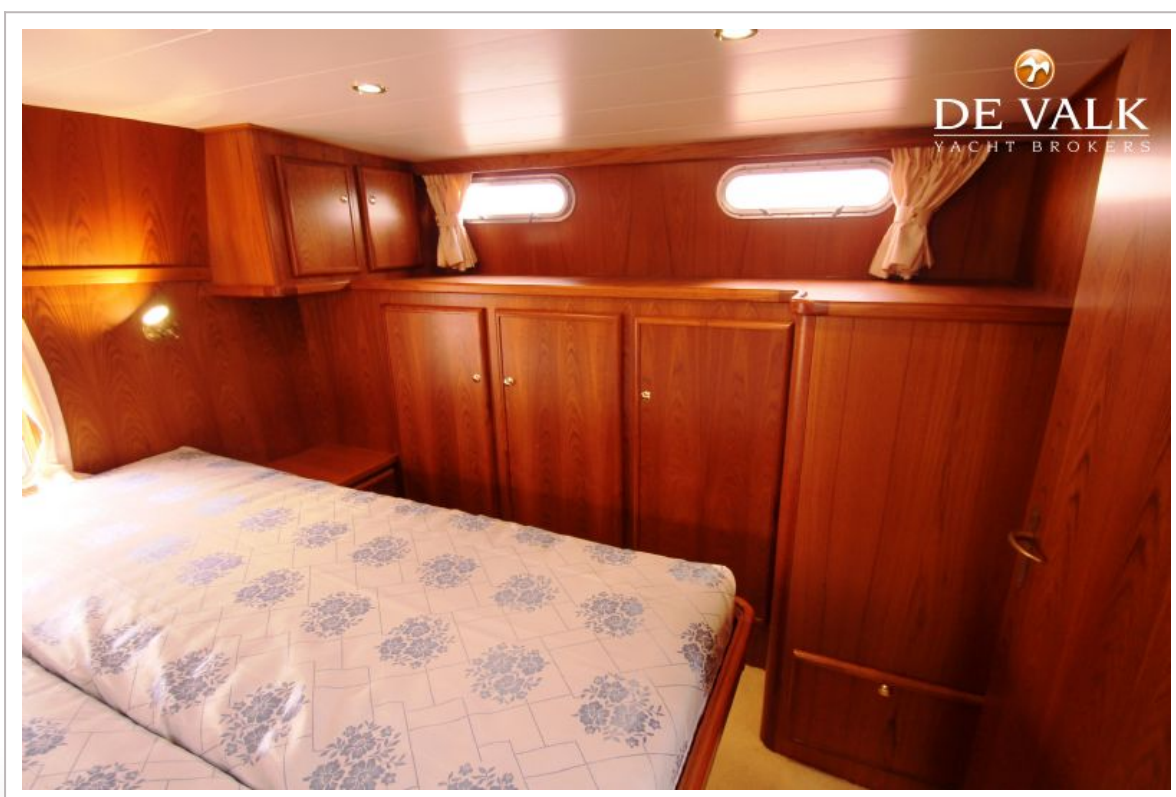


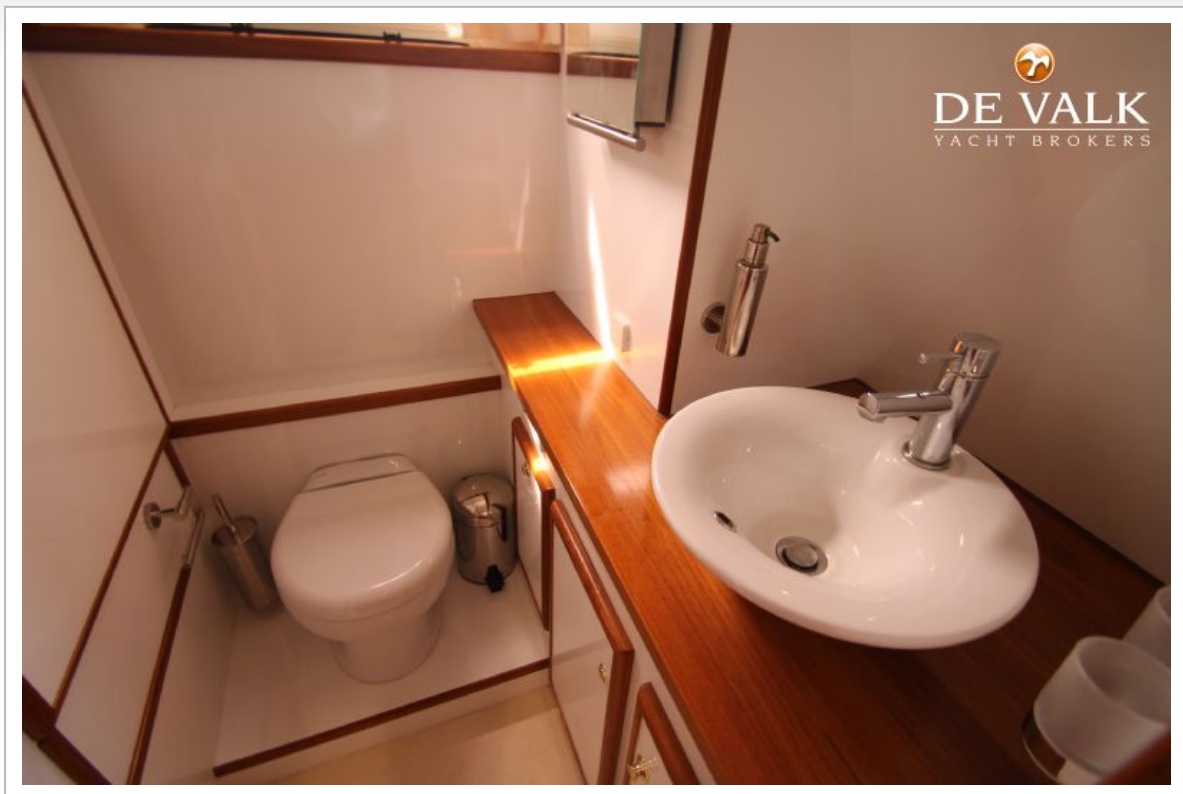


# ABIM CLASSIC 118



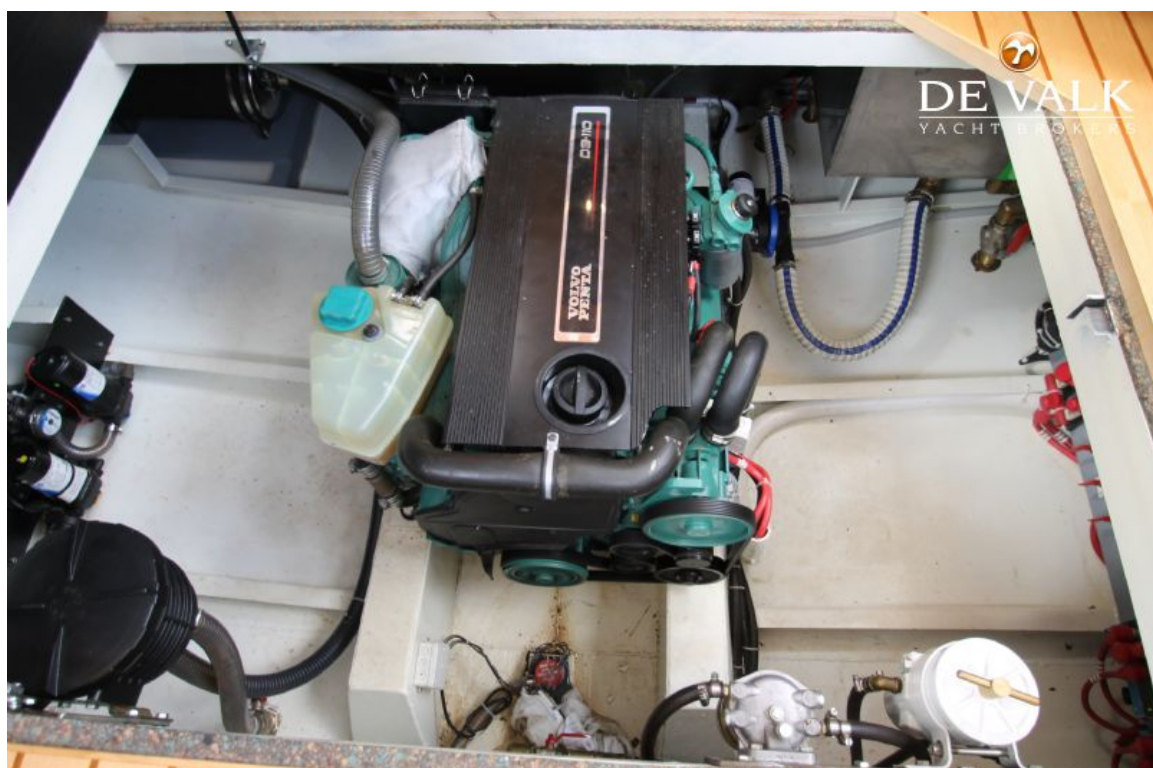
## ABIM CLASSIC 118







# ABIM CLASSIC 118



## ABIM CLASSIC 118

