



DE VALK
YACHT BROKERS



NIMBUS 380



DE VALK
YACHT BROKERS

NIMBUS 380

BROKER'S COMMENTS

Nimbus 380 "Overstag", GRP motoryacht with two cabins and a bathroom. Well equipped: fuel polishing system, bow- and sternthruster, Webasto central heating, Webasto airconditioning and a complete set of Raymarine navigation equipment. Recent engine service. Viewing of this Nimbus 380 is possible in our sales marina in Sneek.

Arne Doodeman

SPECIFICATIONS

Dimensions	11.50 x 3.60 x 1.10 (m)	Builder	Nimbus Boats AB
Built	2001	Cabins	2
Material	GRP	Berths	4
Engine(s)	2 x Yanmar 4LH-STE diesel	Hp/Kw	2 x 230.00 (hp), 169.05 (kw)
Asking price	sold (VAT)	Lying	at sales office

CONTACT

Sales office	De Valk Sneek	Telephone	+31 (0)515 42 80 30
Address	Zwolsmanweg 7 8606 KC Sneek NL	E-mail	sneek@devalk.nl

DISCLAIMER

These particulars are given in good faith as supplied but cannot be guaranteed.



GENERAL

Model	NIMBUS 380
Type	motor yacht
LOA (m)	11,50
Beam (m)	3,60
Draft (m)	1,10
Air draft (m)	3,30
Year built	2001
Builder	Nimbus Boats AB
Country	Sweden
Designer	Rolf Eliasson/Nimbus Design
Displacement (t)	7
CE norm	B
Hull material	GRP
Hull colour	blue
Superstructure material	GRP
Rubbing strake	rubber
Deck material	GRP
Deck finish	teak
Cockpit deck finish	teak
Window frame	aluminium
Window material	tempered glass
Deckhatch	2 x
Radar arch	yes
Fuel tank (litre)	755
Level indicator (fuel tank)	yes
Freshwater tank (litre)	430
Level indicator (freshwater)	yes
Blackwater tank (litre)	75
Wheel steering	hydraulic
Inside helm position	yes



ACCOMMODATION

Cabins	2
Berths	4
Interior	teak
Floor	teak And carpet
Open cockpit	yes
Saloon	yes
Heating	central heating Webasto (2012)
Heating 2	diesel ducted hot air Airdic for front windows
Air-conditioning	Webasto (2012)
Dinette	yes
Sliding door to cockpit	yes
Galley	yes
Countertop	yes
Sink	stainless steel Double
Cooker	calor gas 3 burner
Oven	yes
Fridge	Isotherm 130L
Hot water system	220V + engine Isothemp
Water pressure system	yes
Crockery	yes
Owners cabin	French bed
Wardrobe	shelves and hanging
Bathroom	shared
Toilet	shared
Toilet system	electric
Wash basin	in the bathroom
Shower	shared
Guest cabin 1	double bed
Wardrobe	shelves and hanging
Washing machine	Hand washing machine



MACHINERY

No of engines	2
Make	Yanmar
Type	4LH-STE
HP	230,00
kW	169,05
Fuel	diesel
Year installed	2001
Year of overhaul	Complete engine service winter period 2014/2015
Maximum speed (kn)	22
Cruising speed (kn)	16
Engine hours	1790 (24-6-2015)
Engine cooling system	freshwater heat exchanger
Drive	Z-drive
Engine controls	electrical Microcommand
Gearbox	ZF Hurth
Bowthruster	electric Sidepower (2012)
Sternthruster	electric Sidepower (2012)
Propeller type	fixed
Propeller blades	4 bladed, there are two spare propellers
Propeller shaft material	stainless steel
Shaft lubrication	water
Manual bilge pump	yes
Electric bilge pump	yes
Batteries	4x
Service battery	3 x 155ah
Bowthruster battery	1x
Battery monitor	Mastervolt (digital)
Battery charger	Mastervolt chargemaster 12/25-3
Battery charger/inverter	Mastervolt 12/2500/100
Shorepower	with cable



Trimtabs	yes
Extra info	Fuel polishing system Algae-x FPS500, double fuelfilter Separ

NAVIGATION

Electric compass	Raytheon ST40
Depth sounder	Raymarine
Log	Raymarine
Windset	Tacktick MN100
Fish finder	Raytheon L760
VHF	Raymarine Ray240E
Autopilot	Raymarine ST70
Radar	Radar
Radar/GPS/plotter	Raymarine C90W
AIS receiver	yes
Camera	For aft
Searchlight	yes
Extra info	Electric seavalses

EQUIPMENT

Cockpit cover	yes
Cockpit cushions	yes
Cockpit table	yes
Bathing platform	yes
Boarding ladder	stainless steel
Deck shower	yes
Anchor	15KG stainless steel
Anchor chain	yes
Windlass	electrical Lewmar
Sea railing	stainless steel
Grab rail (superstructure)	stainless steel
Lifebuoy	yes



Wiper	3x
Radar reflector	Sea Me active radar reflector
Fenders	yes
Mooring lines	yes
TV	Sharp
Radio-cd player	Jensen (working on remote only)
DVD player	Vestrel
Clock - barometer	Schatz clock
Fire extinguisher	yes



NIMBUS 380



NIMBUS 380



NIMBUS 380



NIMBUS 380



NIMBUS 380



NIMBUS 380



NIMBUS 380



NIMBUS 380



NIMBUS 380



NIMBUS 380



NIMBUS 380



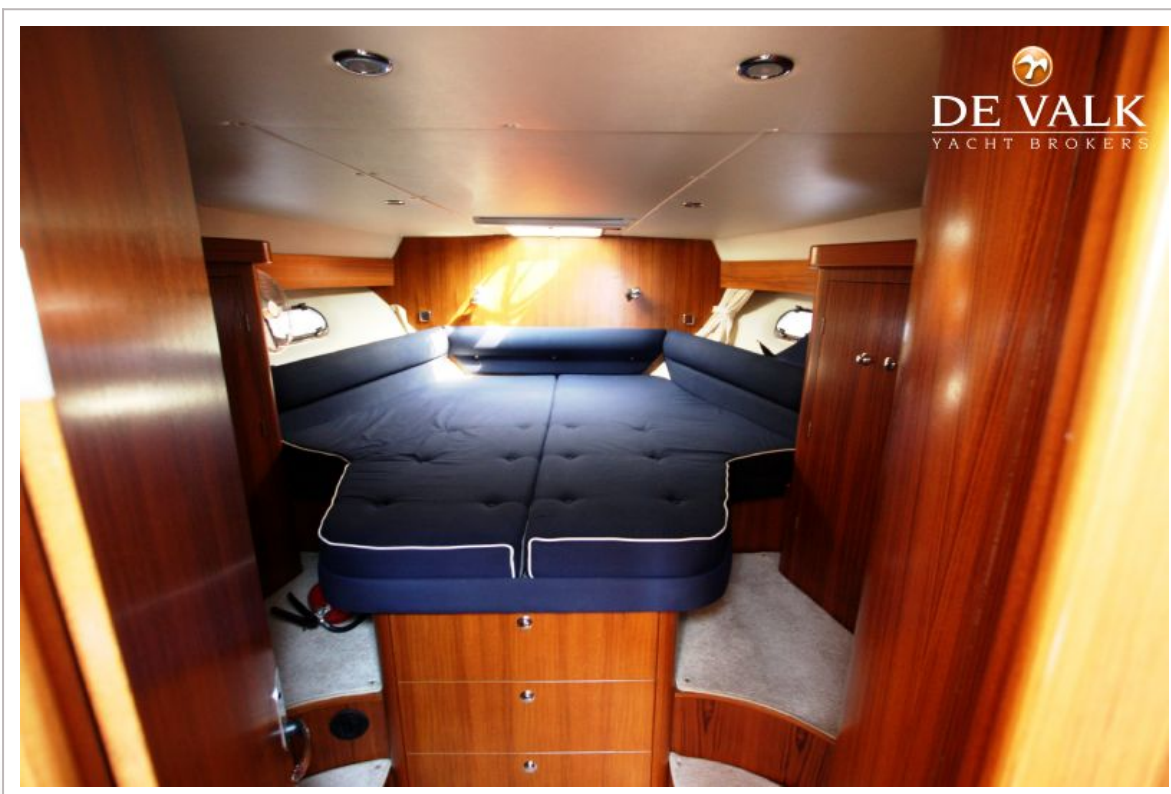
NIMBUS 380



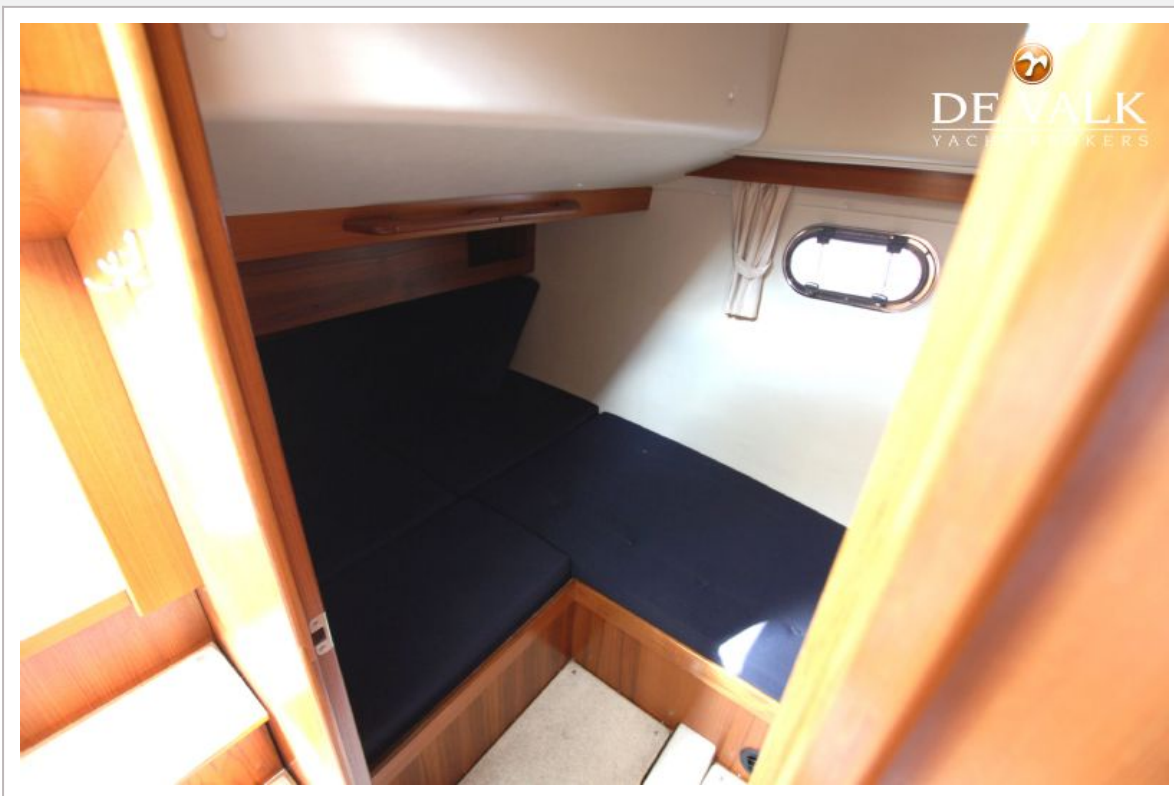
NIMBUS 380



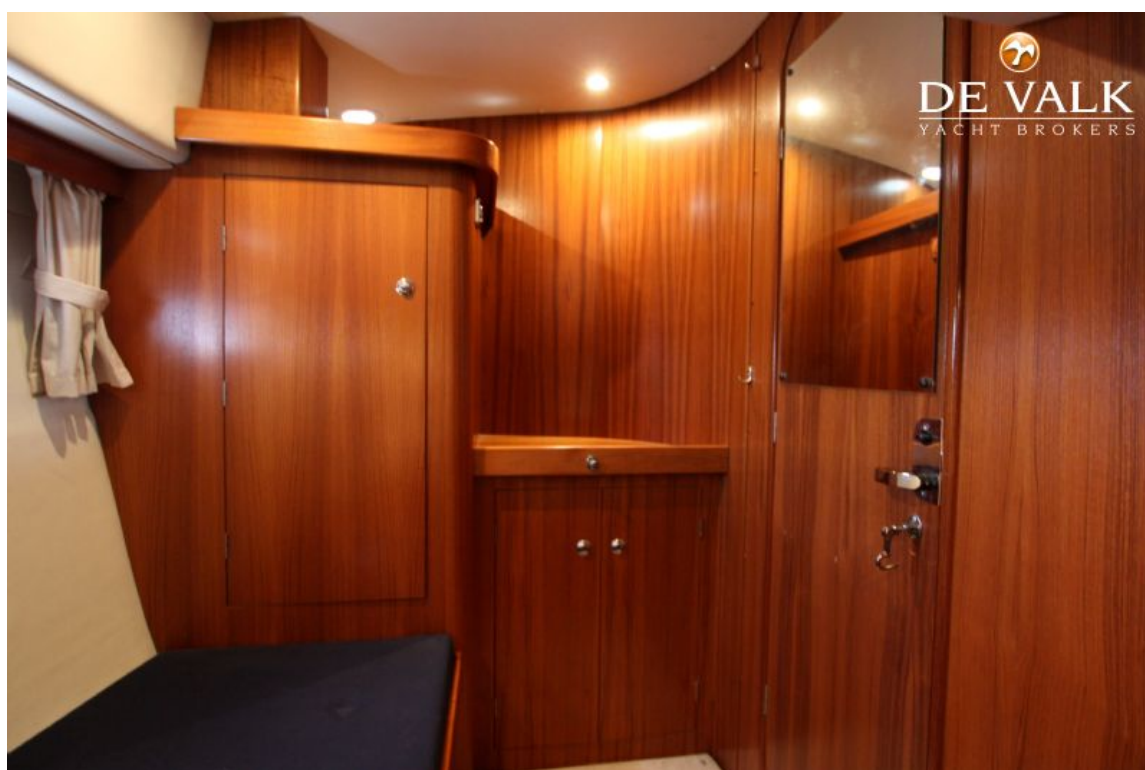
NIMBUS 380



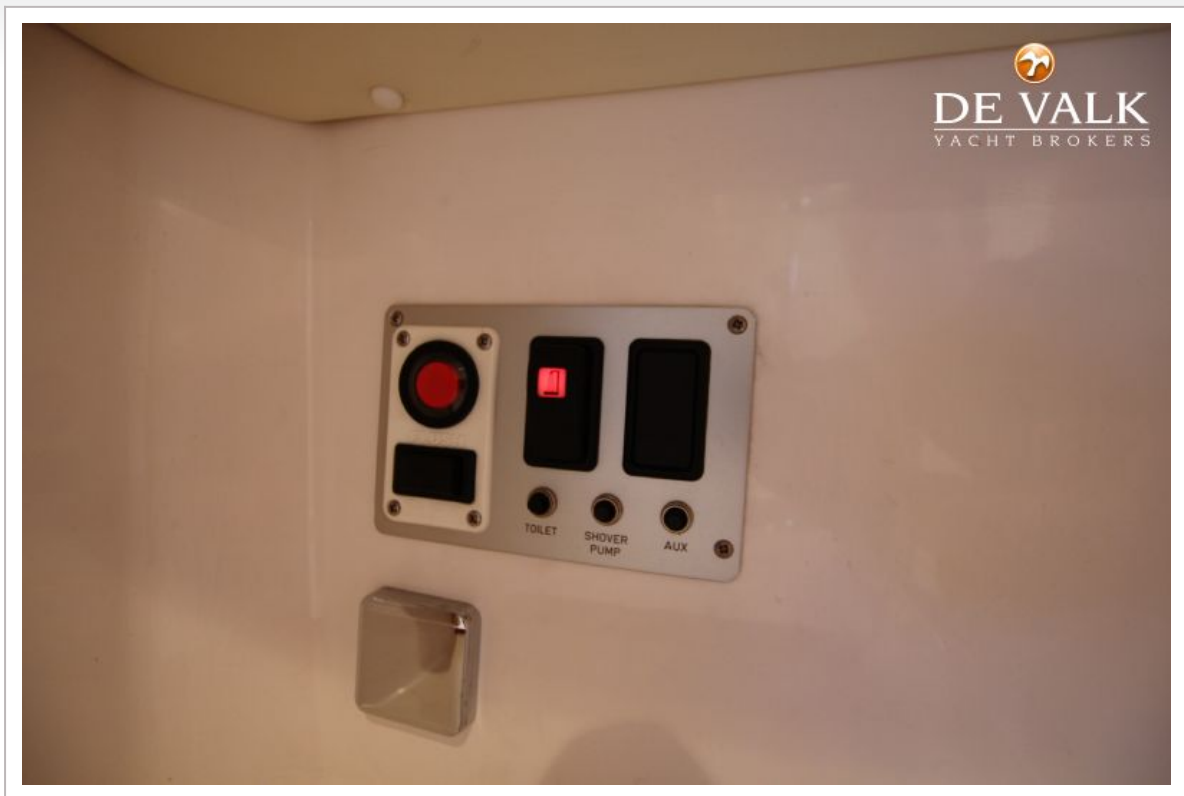
NIMBUS 380



NIMBUS 380



NIMBUS 380



NIMBUS 380

