



## STEVENVLET 1245

# STEVENVLET 1245

## BROKER'S COMMENTS

Sturdy Steenvlet named Buster and built by De Scheepsbouwers Werkendam. Built to high standards with many extra's for example a hydraulic bow thruster, hydraulic windlass and hydraulic deck crane. Equipped with teak interior in provided with new carpet and creme coloured leather upholstery in 2015. This Steenvlet 1245 is a perfect long distance coastal cruiser in top condition and ready to go!

*Pieter Bosma*

## SPECIFICATIONS

<b>Dimensions</b>	12.45 x 4.00 x 1.10 (m)	<b>Builder</b>	De Scheepsbouwers Werkendam
<b>Built</b>	1999	<b>Cabins</b>	1
<b>Material</b>	Steel	<b>Berths</b>	4
<b>Engine(s)</b>	1 x Deutz BF6M1012-E diesel	<b>Hp/Kw</b>	136.00 (hp), 99.96 (kw)
<b>Asking price</b>	sold (VAT )	<b>Lying</b>	at sales office

## CONTACT

<b>Sales office</b>	De Valk Sneek	<b>Telephone</b>	+31 (0)515 42 80 30
<b>Address</b>	Zwolsmanweg 7 8606 KC Sneek NL	<b>E-mail</b>	sneek@devalk.nl

## DISCLAIMER

These particulars are given in good faith as supplied but cannot be guaranteed.



## GENERAL

Model	STEVENVLET 1245
Type	motor yacht
LOA (m)	12,45
Beam (m)	4,00
Draft (m)	1,10
Air draft (m)	3,00
Headroom (m)	2,00
Year built	1999
Builder	De Scheepsbouwers Werkendam
Country	The Netherlands
Designer	Th. Gillissen
Displacement (t)	20
CE norm	yes
Hull material	steel
Hull colour	black
Hull shape	round-bilged
Keel type	box keel
Superstructure material	steel
Rubbing strake	rubber
Deck material	steel
Deck finish	anti-slip paint
Cockpit deck finish	teak
Dorades	yes
Window frame	aluminium
Window material	double glazing
Deckhatch	yes
Portholes	yes
Insulation	rockwool
Mast can be lowered	hydraulic
Steadying sail with mast	yes



Fuel tank (litre)	steel 1800 l.
Level indicator (fuel tank)	yes
Freshwater tank (litre)	stainless steel 958 l.
Level indicator (freshwater)	yes
Blackwater tank (litre)	425 l.
Level indicator (blackwater)	yes
Wheel steering	hydraulic
Inside helm position	yes
Outside helm position	hydraulic
Emergency tiller	yes

## ACCOMMODATION

Cabins	1
Berths	4
Interior	teak
Floor	carpet (2015)
Open cockpit	yes
Pilot house/deck saloon	yes
Saloon	new creme leather upholstery (2015)
Headroom saloon (m)	2.00 m
Heating	central heating Kabola
Chart table	yes
Dinette	yes
Opening door to cockpit	yes
Galley	yes
Countertop	plastic
Sink	stainless steel
Cooker	electric
Microwave	Whirlpool
Fridge	with freezer compartment
Freezer	yes



Hot water system	on central heating Kabola
Water pressure system	electrical
Owners cabin	v-bed
Bathroom	separate
Toilet	separate
Toilet system	electric
Wash basin	in the bathroom In toilet &
Shower	separate
Extra info	large storage under cockpit
Extra info	large sliding roof
Washing machine	Eumenia

## MACHINERY

No of engines	1
Make	Deutz
Type	BF6M1012-E
HP	136,00
kW	99,96
Fuel	diesel
Year installed	1999
Maximum speed (kn)	8,1
Cruising speed (kn)	7
Engine hours	1550
Engine cooling system	closed keelcooling
Drive	shaft
Engine controls	electrical MiniMarex
Gearbox	PRM500D
Bowthruster	hydraulic 15 hp
Thrust bearing	2015
Propeller type	fixed
Propeller blades	4-bladed



Propeller shaft material	stainless steel
Shaft lubrication	water
Electric bilge pump	yes
Electrical installation	220/24V
Start battery	Optima Red (2015)
Service battery	yes
Battery monitor	Mastervolt
Battery charger	Mastervolt 24/50
Inverter	Mastervolt 24/3000 W
Shorepower	with cable

## NAVIGATION

Compass	Simrad IS15
Depth sounder	Simrad IS15
Log	Simrad IS15
VHF	Shipmate RS8300
Autopilot	with joystick Robertson AP22
Plotter	Simrad CD40

## EQUIPMENT

Cockpit cover	yes
Boarding ladder	stainless steel
Anchor	yes
Anchor chain	yes
Windlass	electrical
Windlass aft	electrical
Deck crane	hydraulic
Sea railing	stainless steel
Grab rail (superstructure)	stainless steel
Railing side opening gates	yes
Wiper	3x



Horn	air pressure
Fenders	yes
Mooring lines	yes
TV	Philips
Radio-cd player	Blaupunkt
Auto extinguisher system	yes
Extra info	spare propeller

## RIGGING

Rigging	
Standing rigging	wire
Material mast	aluminium
Spreaders	yes
Mast lowering system	hydraulic



# STEVENVLET 1245





# STEVENVLET 1245



# STEVENVLET 1245





# STEVENVLET 1245



# STEVENVLET 1245



# STEVENVLET 1245





# STEVENVLET 1245



# STEVENVLET 1245





# STEVENVLET 1245





# STEVENVLET 1245



# STEVENVLET 1245





# STEVENVLET 1245

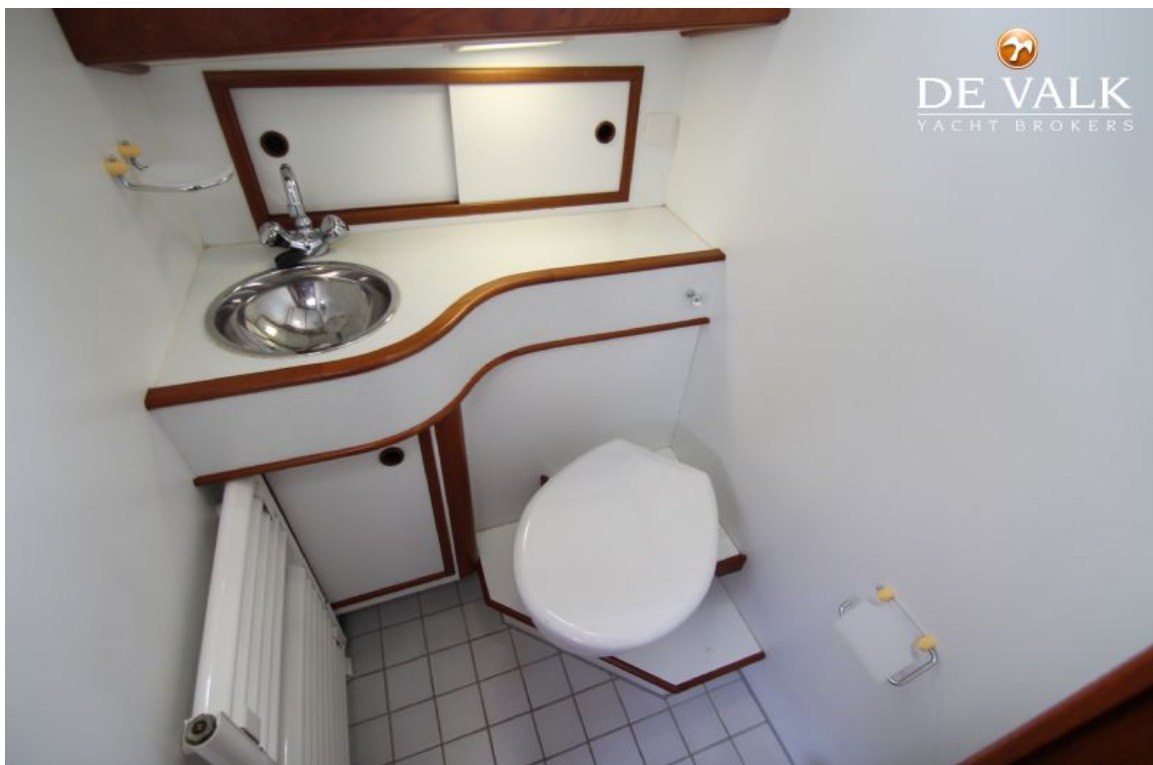


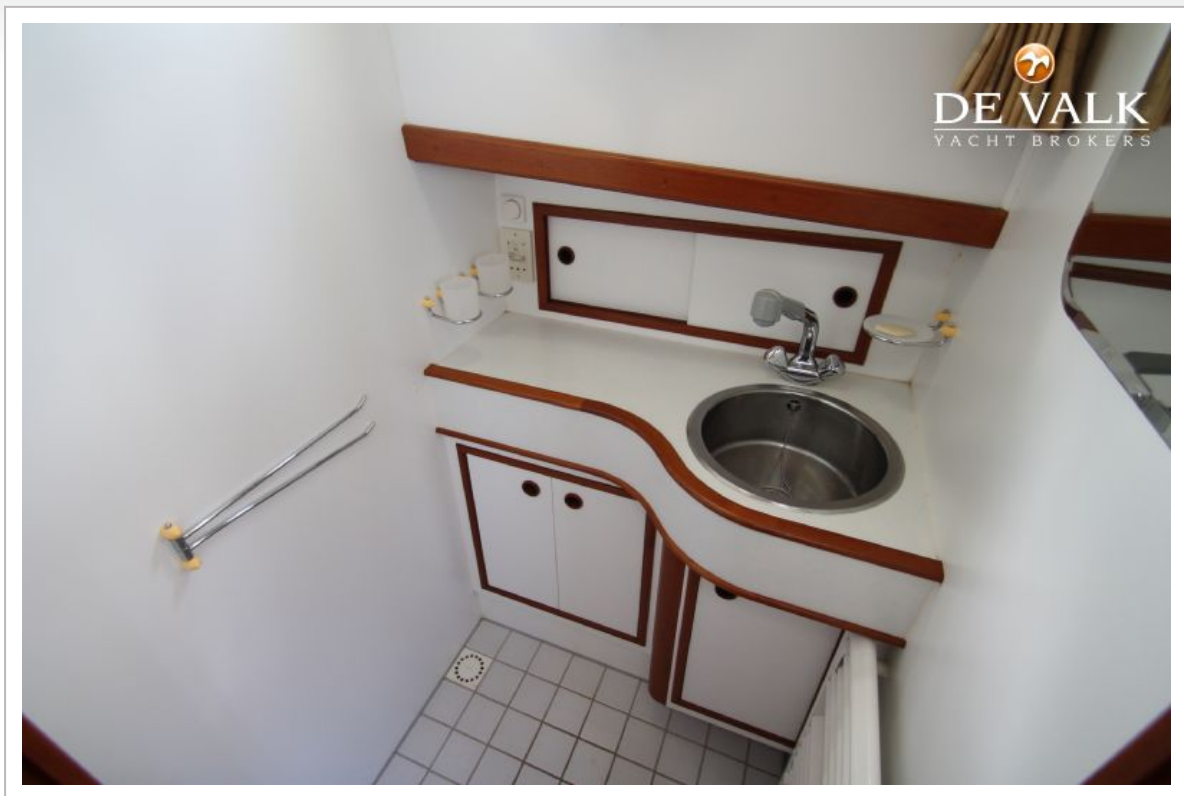
# STEVENVLET 1245





# STEVENVLET 1245





# STEVENVLET 1245

