



TRYVIA 1250 CABRIO

TRYVIA 1250 CABRIO

BROKER'S COMMENTS

Tryvia 1250 Cabrio "Ruach" is a stunning motor yacht built in a neat condition. Equipped with Steyr diesel engine with a flywheel generator, Cupa electric bow- and sternthrustrer and a complete set of Simrad navigation equipment. Good sized owners cabin with storage space, separate shower and toilet, spacious lounge with dinette and kitchen and a large open cockpit with large door to the bathing platform. This Tryvia 1250 Cabrio is definitely worth a visit in our covered sales marina in Sneek!

Arne Doodeman

SPECIFICATIONS

Dimensions	12.45 x 4.10 x 1.00 (m)	Builder	Tryvia Jachten
Built	2009	Cabins	1
Material	Steel	Berths	4
Engine(s)	1 x Steyr M0166K28 diesel	Hp/Kw	166.00 (hp), 122.01 (kw)
Asking price	sold (VAT)	Lying	at sales office

CONTACT

Sales office	De Valk Sneek	Telephone	+31 (0)515 42 80 30
Address	Zwolsmanweg 7 8606 KC Sneek NL	E-mail	sneek@devalk.nl

DISCLAIMER

These particulars are given in good faith as supplied but cannot be guaranteed.



TRYVIA 1250 CABRIO

GENERAL

Model	TRYVIA 1250 CABRIO
Type	motor yacht
LOA (m)	12,45
LWL (m)	11,20
Beam (m)	4,10
Draft (m)	1,00
Air draft (m)	2,38
Year built	2009
Builder	Tryvia Jachten
Country	The Netherlands
Designer	Visser Yacht design
Displacement (t)	15
CE norm	B
Hull material	steel
Hull colour	blue
Hull thickness (mm)	6 & 5 mm
Hull shape	multi hard chine
Superstructure material	steel
Superstructure (mm)	4 mm
Rubbing strake	stainless steel
Deck material	steel
Deck finish	teak
Superstructure deck finish	anti-slip paint
Cockpit deck finish	teak
Window material	tempered glass
Portholes	aluminium
Insulation	rockwool Superstructure above waterline
Radar arch	collapsible
Fuel tank (litre)	polyethylene 650
Level indicator (fuel tank)	VDO



TRYVIA 1250 CABRIO

Freshwater tank (litre)	polyethylene 425
Level indicator (freshwater)	VDO
Blackwater tank (litre)	polyethylene 200
Level indicator (blackwater)	VDO
Wheel steering	hydraulic
Flybridge helm position	yes
Extra info	helm possibilities on remote

ACCOMMODATION

Cabins	1
Berths	4
Interior	cherry
Floor	carpet
Open cockpit	yes
Saloon	yes
Heating	diesel ducted hot air Webasto
Dinette	leather upholstery (2015)
Dinette to convert into berth	yes
Sliding door to cockpit	yes
Galley	yes
Countertop	corian
Sink	stainless steel
Cooker	electric Siemens 4-burner
Microwave	Sharp
Fridge	with freezer compartment Waeco
Hot water system	220V + engine Isothemp
Water pressure system	yes
Owners cabin	French bed
Wardrobe	hanging/drawers/shelves
Bathroom	separate
Toilet	separate



Toilet system	electric
Wash basin	in the bathroom
Shower	separate

MACHINERY

No of engines	1
Make	Steyr
Type	M0166K28
HP	166,00
kW	122,01
Fuel	diesel
Year installed	2009
Engine hours	380 (17-7-2015)
Engine cooling system	freshwater heat exchanger
Drive	shaft
Engine controls	electrical
Gearbox	hydraulic ZF45
Bowthruster	electric Cupa
Sternthruster	electric Cupa
Exhaust	watercooled
Thrust bearing	Aquadrive
Propeller type	fixed
Propeller blades	5-bladed (2015)
Propeller shaft material	stainless steel
Shaft lubrication	water
Electric bilge pump	yes
Generator	On main engine ca. 5 kva
Start battery	1x
Service battery	4x
Sternthruster battery	2x
Battery monitor	yes



Battery charger/inverter	Victron Quattro 24/5000/120
Shorepower	with cable
Insulation transformer	Victron Insulation transformer 3600

NAVIGATION

Electric compass	Simrad IS 20
Depth sounder	Simrad IS 20 combi
Log	Simrad IS 20 combi
VHF	Simrad RS81
Autopilot	Simrad AP28
Rudder angle indicator	Simrad IS 20
Plotter	Simrad NX 45

EQUIPMENT

Fixed windscreen	yes
Cockpit cover	yes
Cockpit cushions	yes
Cockpit table	yes
Cockpit chairs	two luxury helm chairs
Bathing platform	yes
Boarding ladder	stainless steel
Transom door	yes
Deck shower	hot & cold
Anchor	yes
Anchor chain	yes
Windlass	electrical Quick
Deck wash	yes
Sea railing	stainless steel
Railing side opening gates	yes
Wiper	Heavy duty (3x)
Horn	yes



TRYVIA 1250 CABRIO

Fenders	yes
Mooring lines	yes
TV	Sharp
Radio-cd player	Lanzar
DVD player	Lanzar
Cockpit speakers	yes
Speakers in salon	yes
Fire extinguisher	yes
Extinguisher in engine room	yes



TRYVIA 1250 CABRIO



TRYVIA 1250 CABRIO



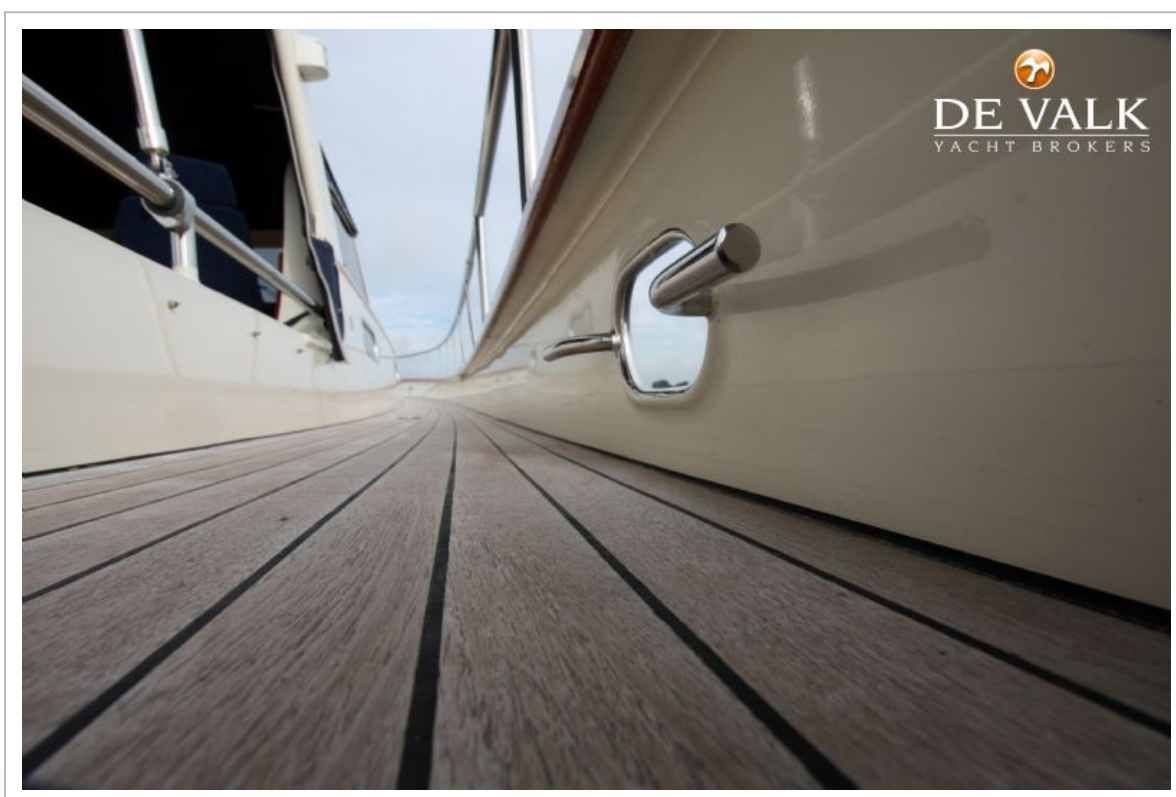
TRYVIA 1250 CABRIO



TRYVIA 1250 CABRIO



TRYVIA 1250 CABRIO



TRYVIA 1250 CABRIO



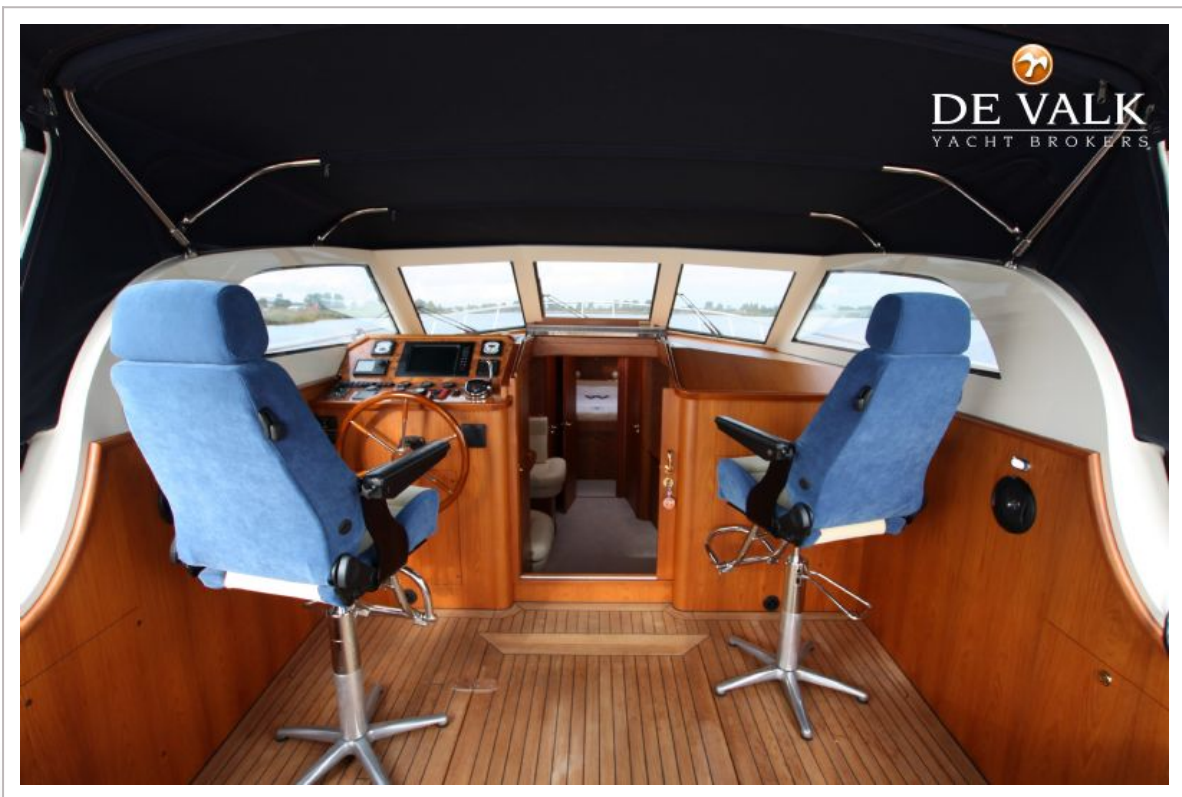
TRYVIA 1250 CABRIO



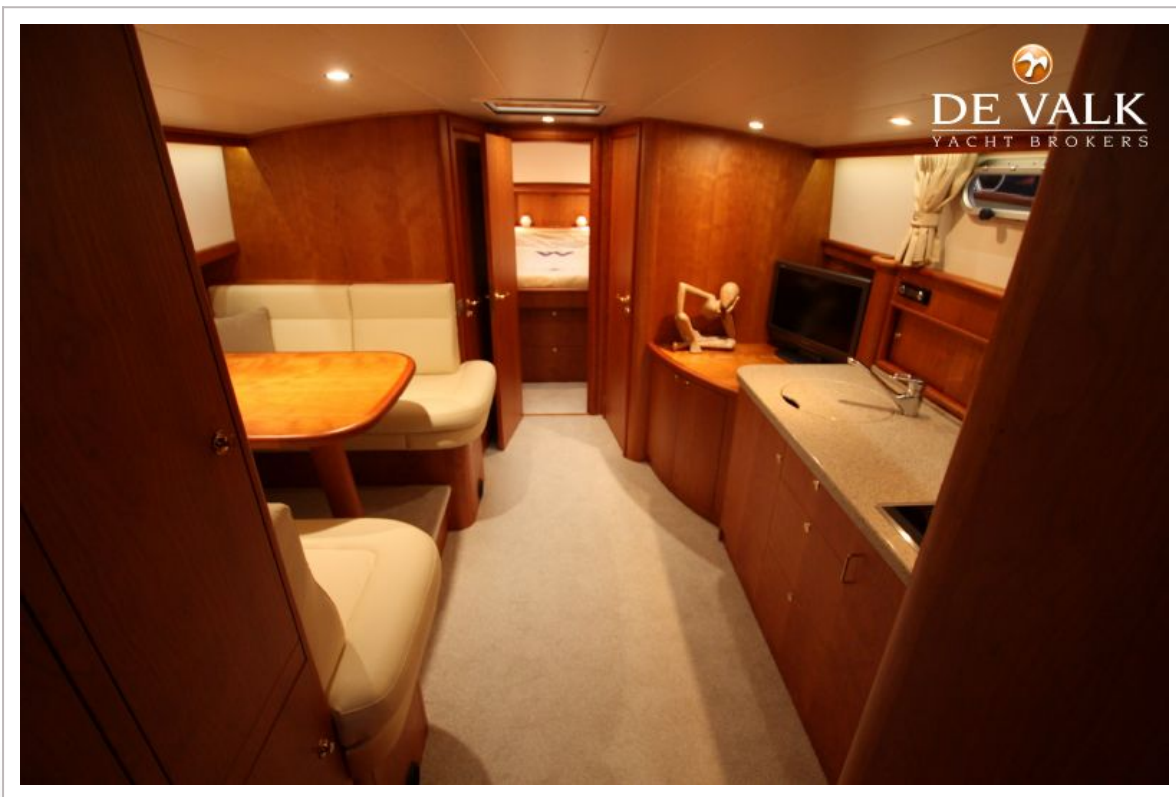
TRYVIA 1250 CABRIO



TRYVIA 1250 CABRIO



TRYVIA 1250 CABRIO



TRYVIA 1250 CABRIO



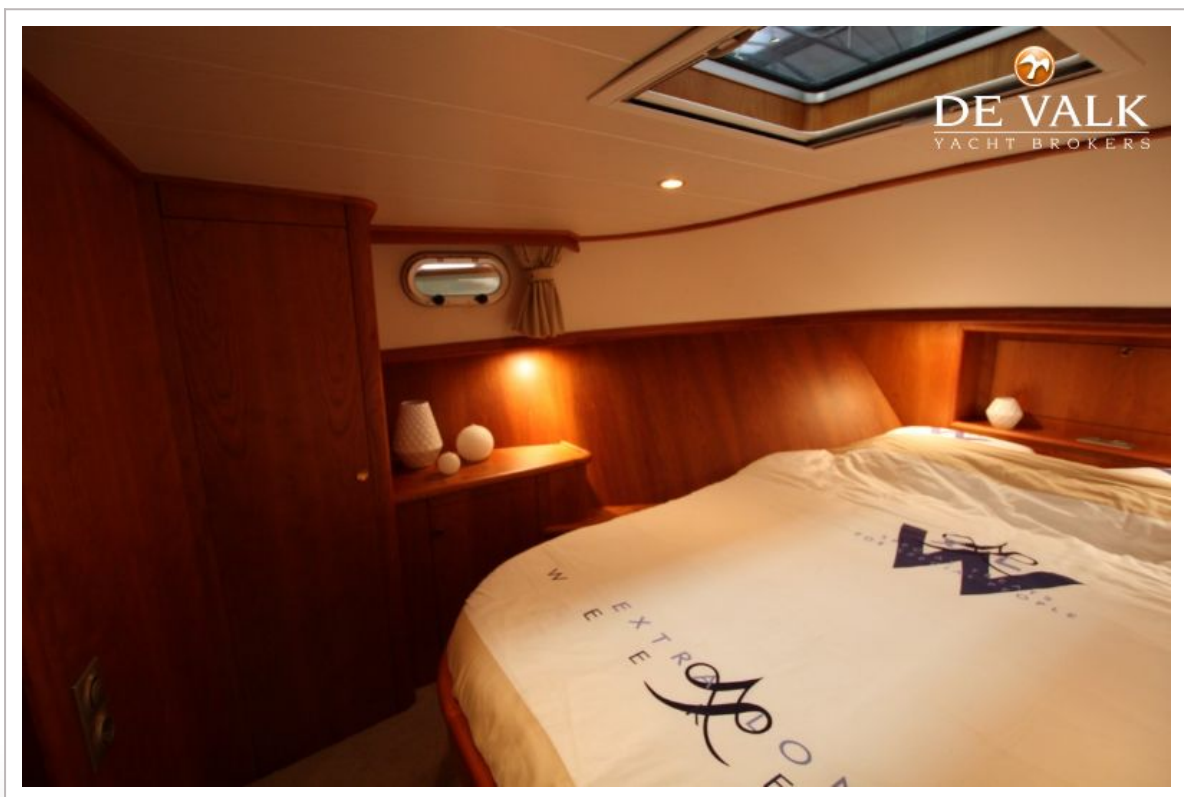
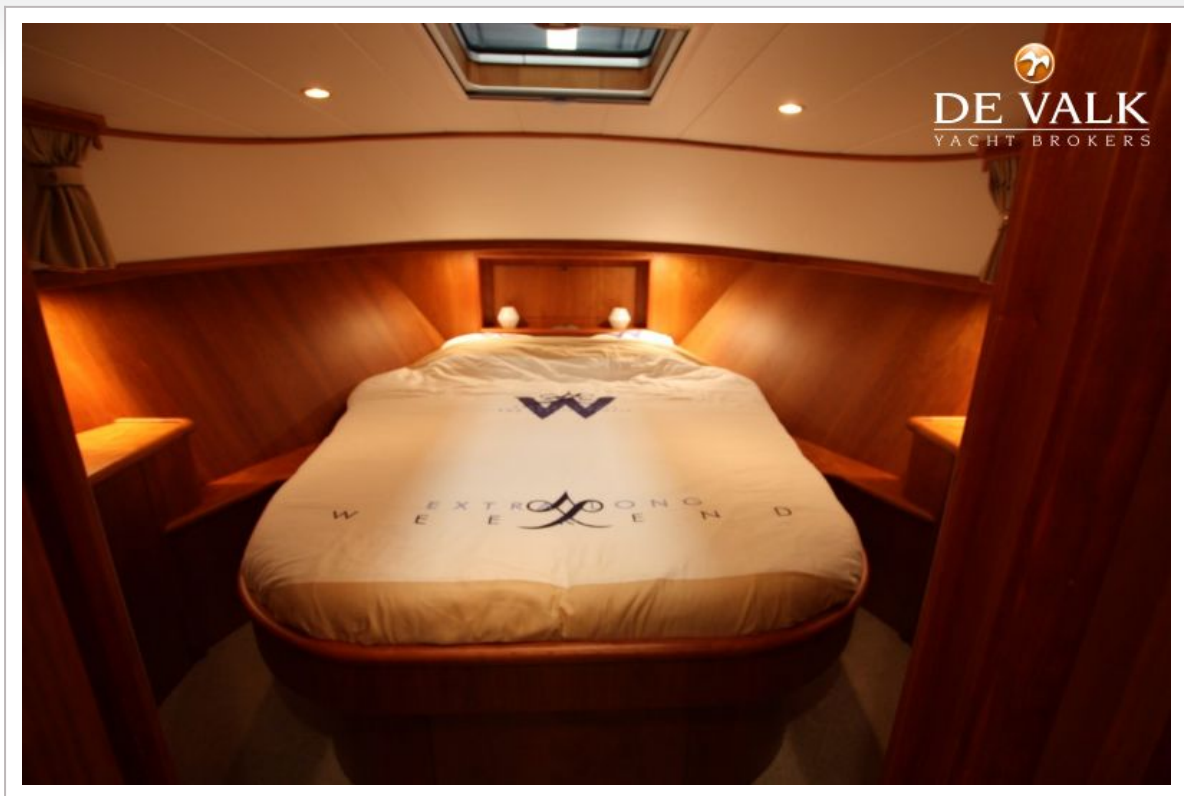
TRYVIA 1250 CABRIO



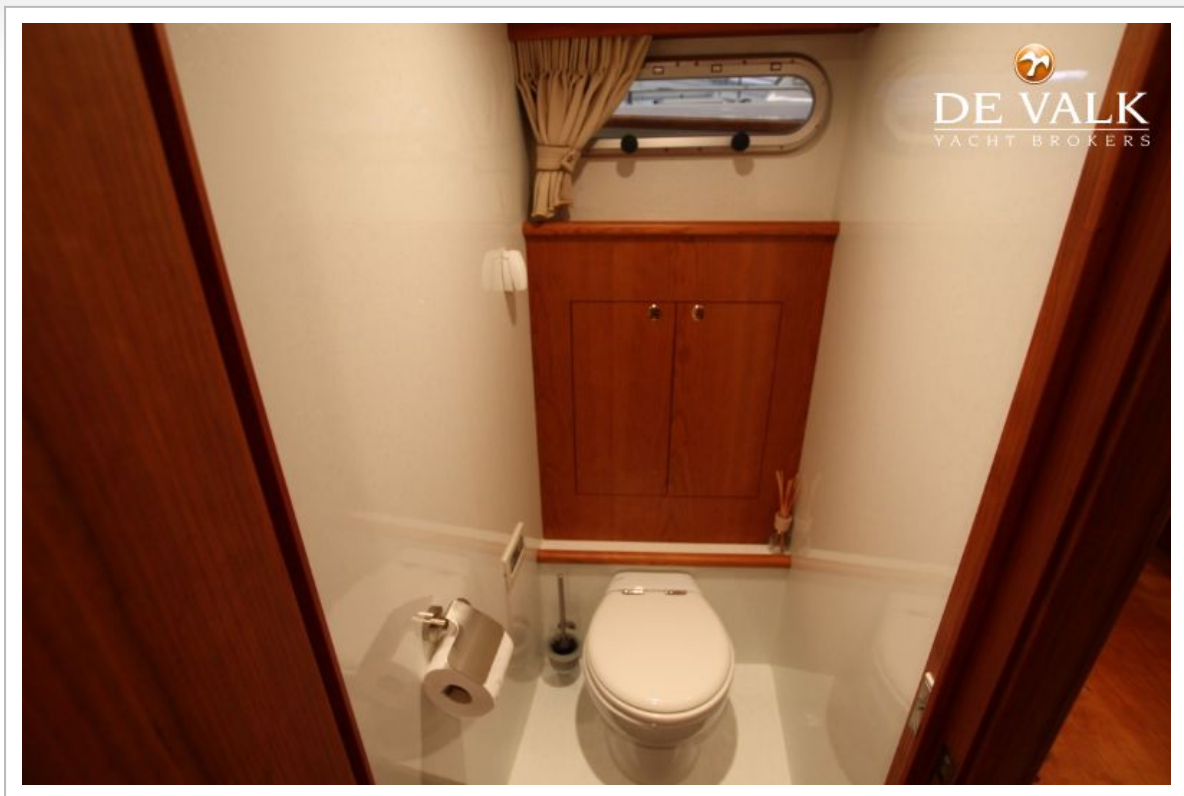
TRYVIA 1250 CABRIO



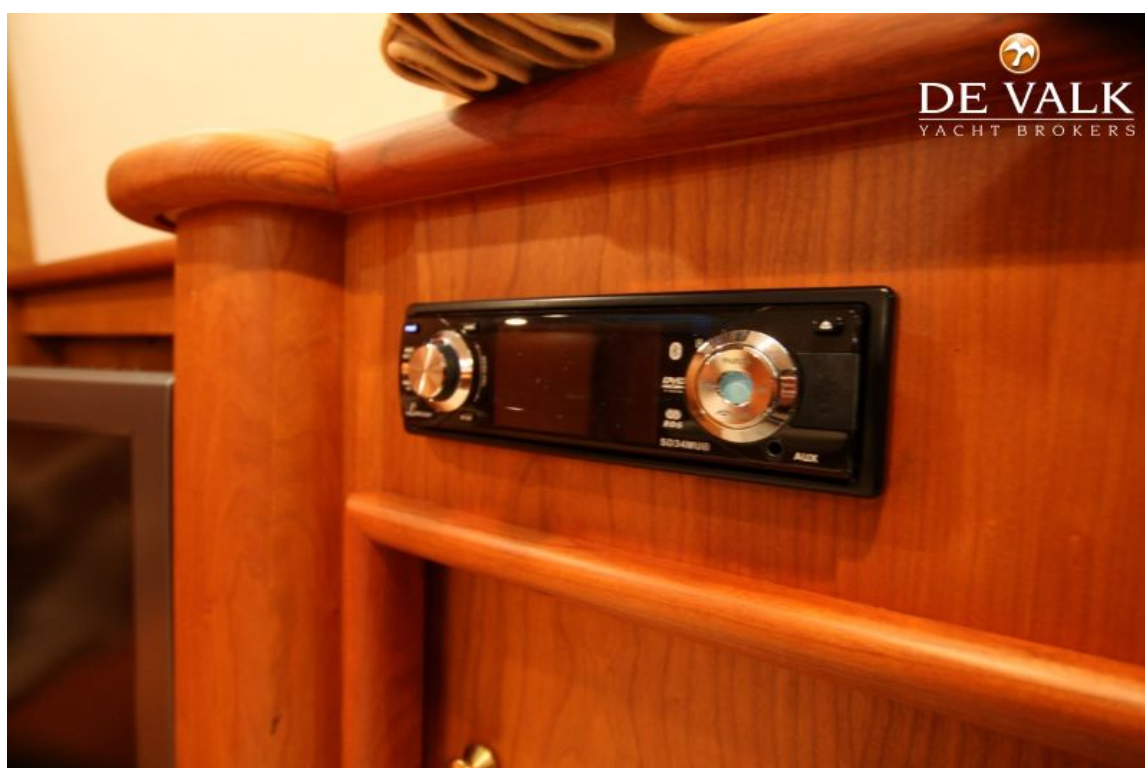
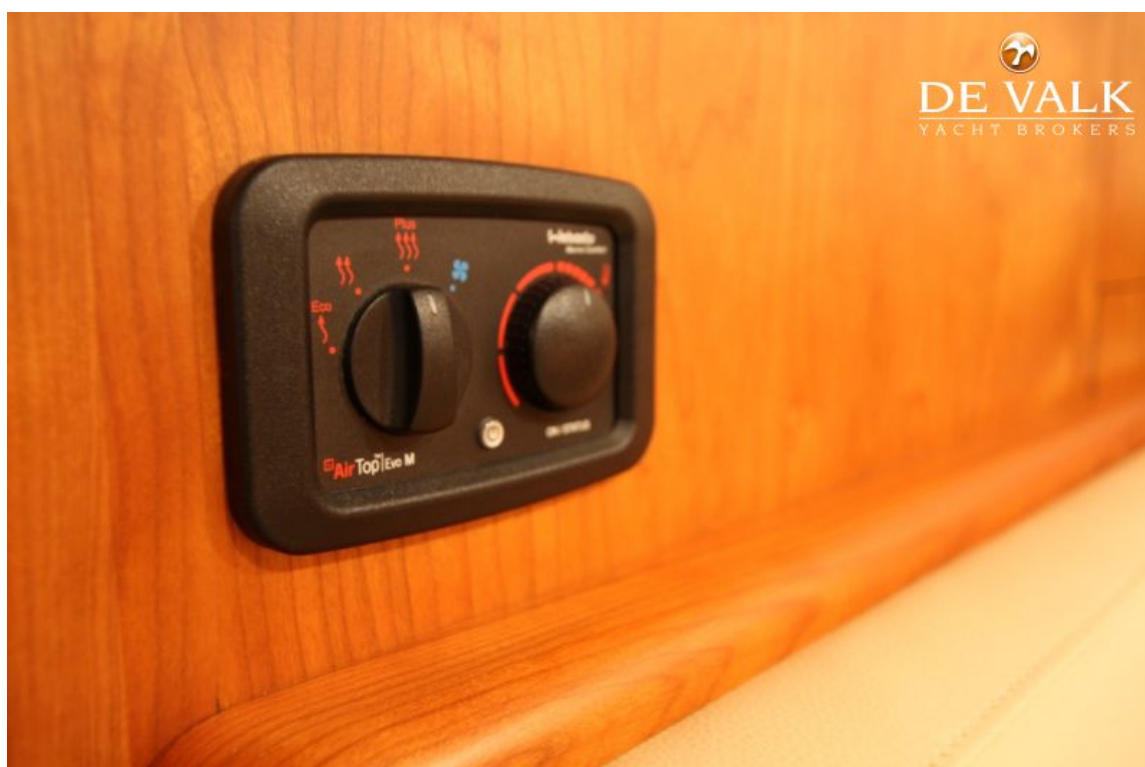
TRYVIA 1250 CABRIO



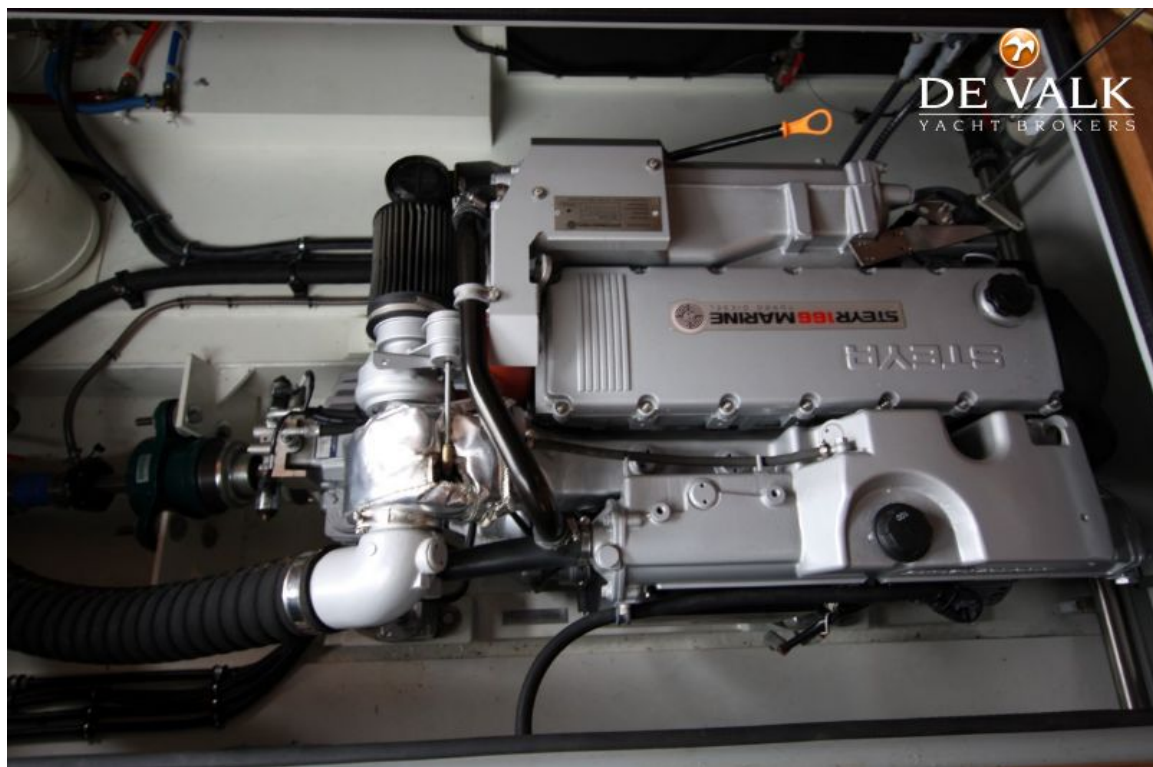
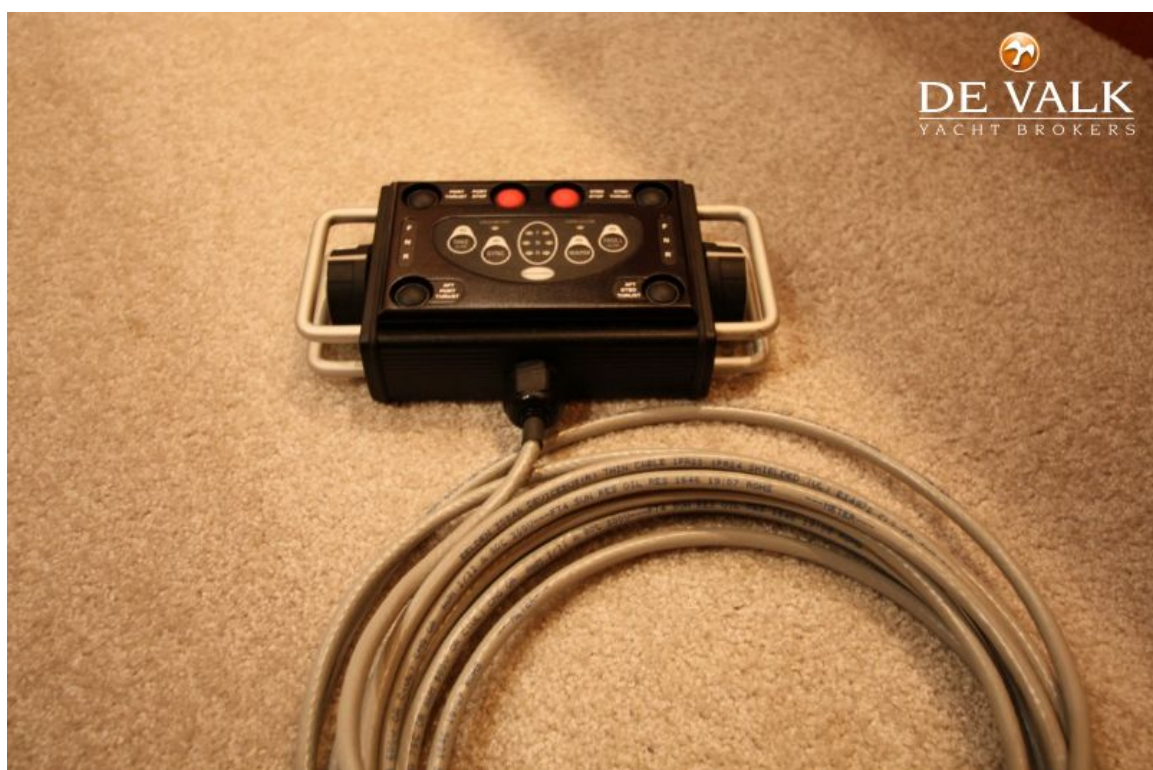
TRYVIA 1250 CABRIO



TRYVIA 1250 CABRIO



TRYVIA 1250 CABRIO



TRYVIA 1250 CABRIO



