



VIVANTE 55

BROKER'S COMMENTS

The Vivante 55: a classic lined motoryacht with a modern interior & superior sailing characteristics. She provides most options en accessories thinkable for a long and comfortable stay on board. Equipped with three cabins including a beautiful owners cabin with en suite bathroom, spacious galley, professional installed engine room, outside kitchen next to the steering position, an easy to open cabriolet roof, hydraulic sinkable bathing platform, strong enough to lift a dinghy, hydraulic bow- and sternthruster, two engines, Naiad stabilizers, central heating, air-conditioning: too much to name!

Pieter Bosma

SPECIFICATIONS

Dimensions	18.20 x 5.22 x 1.40 (m)	Builder	Vivante Yachts
Built	2010	Cabins	3
Material	Steel	Berths	6
Engine(s)	2 x Vetus Deutz DET66E452A diesel	Hp/Kw	2 x 170.00 (hp), 124.95 (kw)
Asking price	sold (VAT)	Lying	at sales office

CONTACT

Sales office	De Valk Sneek	Telephone	+31 (0)515 42 80 30
Address	Zwolsmanweg 7 8606 KC Sneek NL	E-mail	sneek@devalk.nl

DISCLAIMER

These particulars are given in good faith as supplied but cannot be guaranteed.



GENERAL

Model	VIVANTE 55
Type	motor yacht
LOA (m)	18,20
LWL (m)	14,88
Beam (m)	5,22
Draft (m)	1,40
Air draft (m)	3,45
Headroom (m)	2,00
Year built	2010
Builder	Vivante Yachts
Country	The Netherlands
Designer	Vripack
Displacement (t)	40
CE norm	A
Hull material	steel
Hull colour	white
Hull thickness (mm)	5 mm
Hull shape	round-bilged
Keel type	long keel
Superstructure material	steel
Superstructure (mm)	4 mm
Deck plate thickness (mm)	4 mm
Rubbing strake	stainless steel
Deck material	steel
Deck finish	teak
Superstructure deck finish	paint
Dorades	yes
Window frame	aluminium
Window material	double glazing
Deckhatch	3x Bomar



Portholes	stainless steel
Insulation	foam With free hanging floors
Radar arch	collapsible Electrical
Fuel tank (litre)	steel 2000 l.
Level indicator (fuel tank)	yes
Freshwater tank (litre)	stainless steel 1000 l.
Level indicator (freshwater)	yes
Blackwater tank (litre)	400 l.
Level indicator (blackwater)	yes
Blackwater tank extraction	deck extraction + pump
Greywater tank (litre)	yes
Outside helm position	powersteer
More info on paintwork	2 component Alex Seal
Extra info	provided with a lot of stainless steel

ACCOMMODATION

Cabins	3
Berths	6
Interior	yes
Floor	carpet
Aft deck	yes
Saloon	yes
Headroom saloon (m)	2.00 m.
Heating	central heating Kabola HR500 with floorheating and steering position heating
Air-conditioning	reverse cycle airco Cruisair
Aft Cabin	yes
Dining room	yes
Opening door to aft deck	yes
Galley	yes
Countertop	corian



Sink	stainless steel
Cooker	ceramic Gaggenau 4-burner
Extractor	Gaggenau
Microwave/oven combi	Bosch Gourmet Combi
Fridge	Isotherm
Freezer	4 drawers Isotherm
Hot water system	on central heating
Water pressure system	electrical
Dishwasher	Bosch
Ice maker	yes
Coffee maker	yes
Owners cabin	French bed
Bed length (m)	2.10 m.
Wardrobe	hanging and drawers
Bathroom	en suite
Toilet	en suite
Toilet system	electric
Wash basin	in the bathroom Double
Shower	en suite
Guest cabin 1	v-bed
Bed length (m)	2.00 m.
Wardrobe	hanging and drawers
Bathroom	shared
Toilet	separate
Toilet system	electric
Wash basin	at the toilet
Shower	separate
Guest cabin 2	twin single
Bed length (m)	2.00 m.
Wardrobe	hanging and drawers
Washing machine/dryer combi	Candy A wash CDB134
Central vacuum cleaner	Away C30



Extra info	office room with desk and storage space next to the owners cabin
Extra info	outside kitchen with sink and fridge

MACHINERY

No of engines	2
Make	Vetus Deutz
Type	DET66E452A
HP	170
kW	124,95
Fuel	diesel
Engine cooling system	freshwater heat exchanger
Engine controls	electrical
Gearbox	hydraulic ZF
Bowthruster	hydraulic Proportional
Sternthruster	hydraulic Proportional
Exhaust	watercooled
Thrust bearing	Aquadrive
Propeller type	fixed
Propeller blades	4-bladed
Propeller shaft material	stainless steel
Shaft lubrication	water
Electric bilge pump	yes
Bilge alarm	yes
Electrical installation	24/220V
Generator	silent separator Mastervolt Whispergen 16 Kva
Batteries	2015
Start battery	yes
Service battery	2V cells 780 Ah. (2016)
Generator battery	yes
Battery monitor	yes



Battery charger	2x Mastervolt Chargemaster 24/100/3
Inverter	Mastervolt Sinewave 5 KVA.
Diode battery combiners	yes
Shorepower	with cable
Insulation transformer	2x Mastervolt Mass 3.5 16 A
Stabilizers	fin Naiad
Extra info	remote control for bow- and sternthruster and engine control, hydraulic pumps on both engine's
Extra info	aircompressor, active katodic protectioning
Extra info	double seaweat filters

NAVIGATION

Electric compass	yes
Depth sounder/log	Raymarine ST70
Log	Raymarine ST70
VHF	Raymarine
Autopilot	Raymarine
Rudder angle indicator	yes
Radar/GPS/plotter	Raymarine E120
Electronis chart(s)	yes
Camera	yes
Searchlight	with remote control

EQUIPMENT

Bimini	yes
Cockpit cushions	yes
Cockpit table	yes
Bathing platform	hydraulically lowerable. Strong enough to be able to lift a dinghy with a motor
Boarding ladder	stainless steel
Transom door	yes



Deck shower	yes
Anchor	2x
Anchor chain	with chain stopper on the winch 50 m.
Windlass	hydraulic 2x Vetus
Deck wash	yes
Sea railing	stainless steel Oval 60x40
Railing side opening gates	yes
Wiper	3x Heavy Duty Speich
Horn	electric 2x
Fenders	yes
Mooring lines	yes
Tools	yes
TV	in all cabins, in the salon provided with a lift 3x
TV receiver	yes
Satellite	Tracvision M5
Radio-cd player	yes
Cockpit speakers	yes
Speakers in salon	yes
Fire extinguisher	yes
Auto extinguisher system	yes
Extra info	comfortable bosan chair
Extra info	stairlights in- and outside
Extra info	stainless steel fender holders





VIVANTE 55



VIVANTE 55





VIVANTE 55



VIVANTE 55



VIVANTE 55

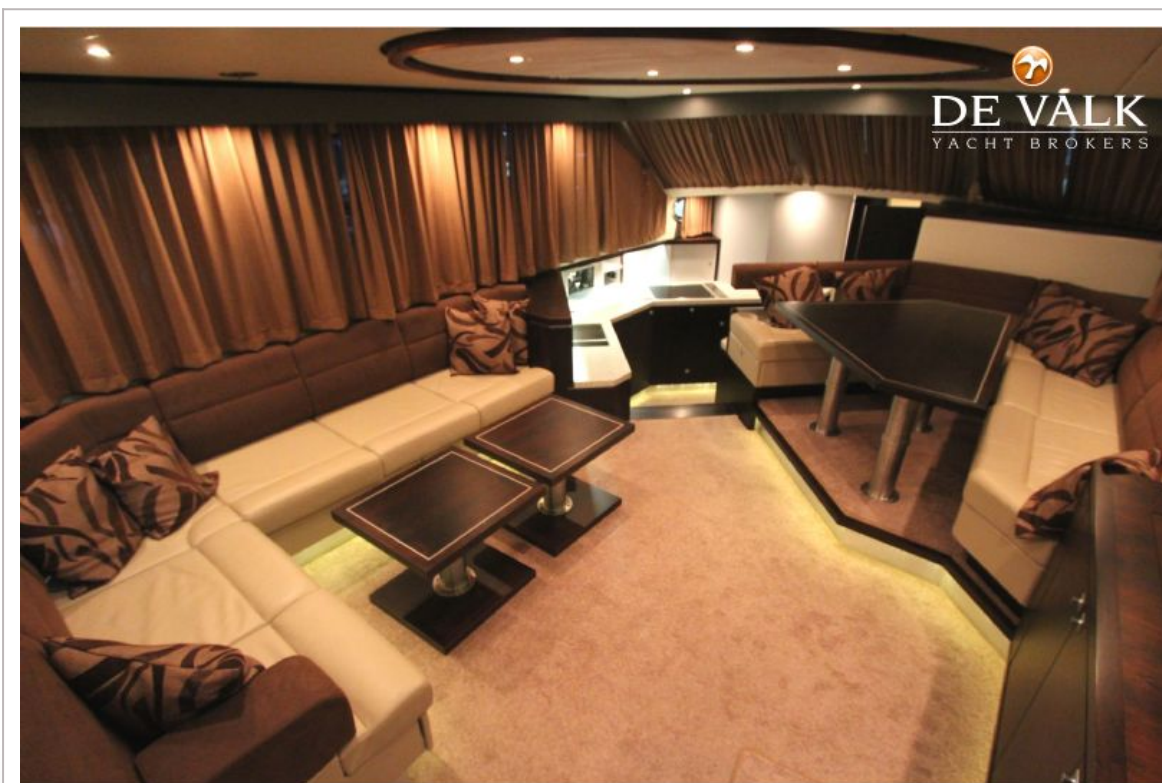


VIVANTE 55





VIVANTE 55





VIVANTE 55



VIVANTE 55



VIVANTE 55









