



DE VALK
YACHT BROKERS



BAKDEKKOTTER 1600



DE VALK
YACHT BROKERS

BROKERAGE | CHARTER | BERTHS | FINANCE | INSURANCE | YACHT MANAGEMENT

BAKDEKKOTTER 1600

BROKER'S COMMENTS

The Bakdekkotter 1600 is a classic, Dutch-designed motor yacht with a length of 16 meters. The ship features a spacious salon, galley, and multiple cabins, contributing to a luxurious and relaxing boating experience. With both bow and stern thrusters, the yacht is easy to maneuver in tight spaces.

Mark Hesselmans

SPECIFICATIONS

Dimensions	16.00 x 3.50 x 1.10 (m)	Builder	Jachtwerf Kralingen Schiedam
Built	1932	Cabins	3
Material	Steel	Berths	9
Engine(s)	1 x Thornycroft diesel	Hp/Kw	100.00 (hp), 73.50 (kw)
Asking price	sold (VAT)	Lying	at sales office

CONTACT

Sales office	De Valk Loosdrecht B.V.	Telephone	+31 (0)35 582 90 30
Address	't Breukeleveense Meentje 6 1231LM Loosdrecht / Wijdmeren NL	E-mail	loosdrecht@devalk.nl

DISCLAIMER

These particulars are given in good faith as supplied but cannot be guaranteed.



GENERAL

Model	BAKDEKKOTTER 1600
Type	motor yacht
LOA (m)	16,00
Beam (m)	3,50
Draft (m)	1,10
Air draft (m)	3,10
Year built	1932
Builder	Jachtwerf Kralingen Schiedam
Country	The Netherlands
Hull material	steel
Hull shape	full bilged
Superstructure material	steel
Deck material	wood
Deck finish	teak
Superstructure deck finish	teak
Dorades	yes
Window frame	aluminium
Window material	glass
Portholes	yes
Mast can be lowered	yes
Level indicator (fuel tank)	yes
Inside helm position	yes
Outside helm position	yes

ACCOMMODATION

Cabins	3
Berths	9
Interior	teak
Floor	wood
Sliding roof	manual



BAKDEKKOTTER 1600

Countertop	wood
Sink	stainless steel
Cooker	calor gas 4 pits
Fridge	yes
Freezer	yes
Hot water system	220V + engine
Water pressure system	electrical
Owners cabin	twin single
Wardrobe	hanging and shelves
Bathroom	en suite
Toilet	en suite
Toilet system	electric
Shower	en suite
Guest cabin 1	twin single
Bathroom	shared
Toilet	shared
Toilet system	electric
Shower	shared
Crew cabin(s)	yes

MACHINERY

No of engines	1
Make	Thornycroft
HP	100
kW	73.50
Fuel	diesel
Engine cooling system	seawater
Engine controls	bowden cable
Gearbox	mechanical
Bowthruster	electric
Sternthruster	electric



Electric bilge pump	yes
Generator	yes
Battery charger/inverter	yes
Shorepower	with cable

NAVIGATION

VHF handheld	Bosch
Rudder angle indicator	yes
Searchlight	yes

EQUIPMENT

Gangway	yes
Deck crane	manual
Sea railing	wood
Fenders	yes
Mooring lines	yes
TV	Sony



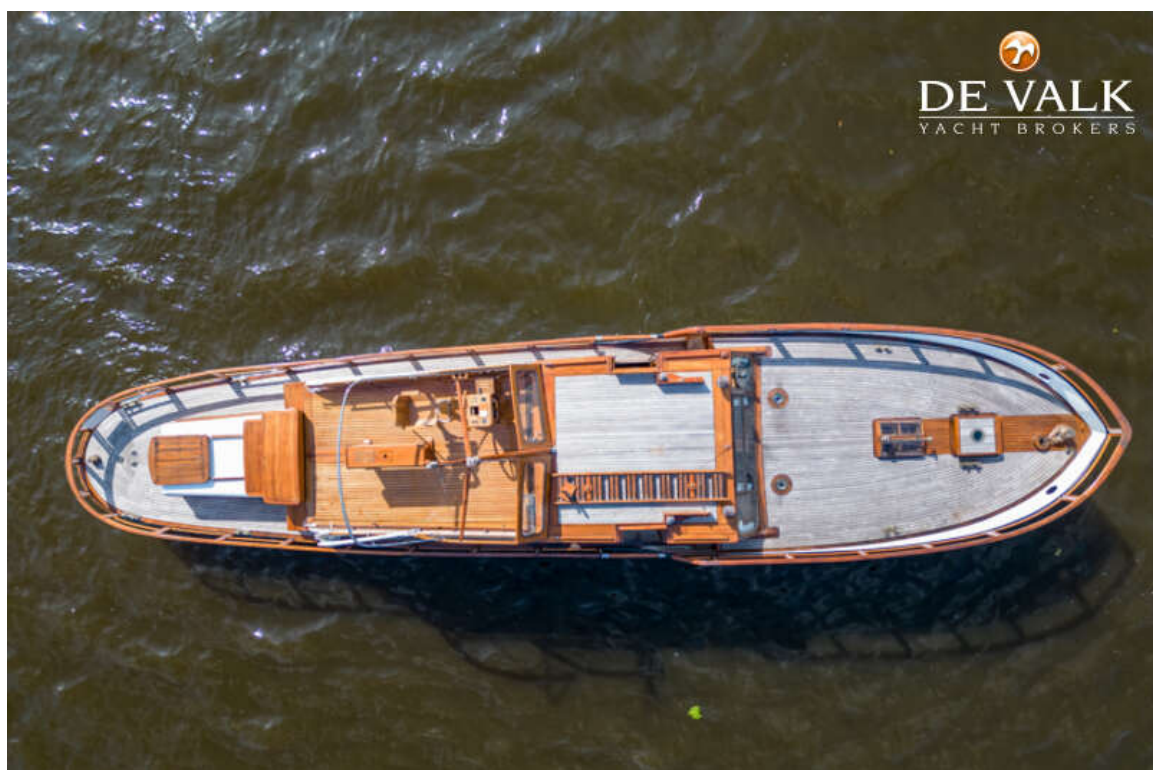
BAKDEKKOTTER 1600



BAKDEKKOTTER 1600



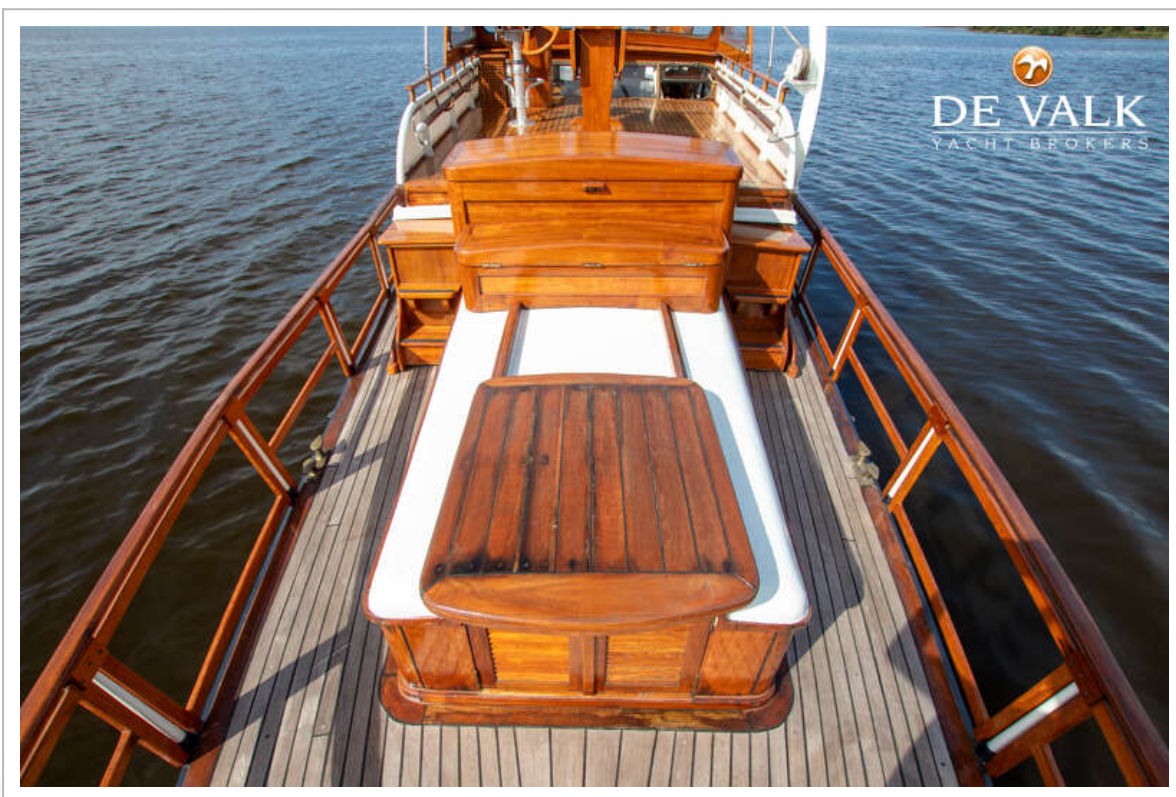
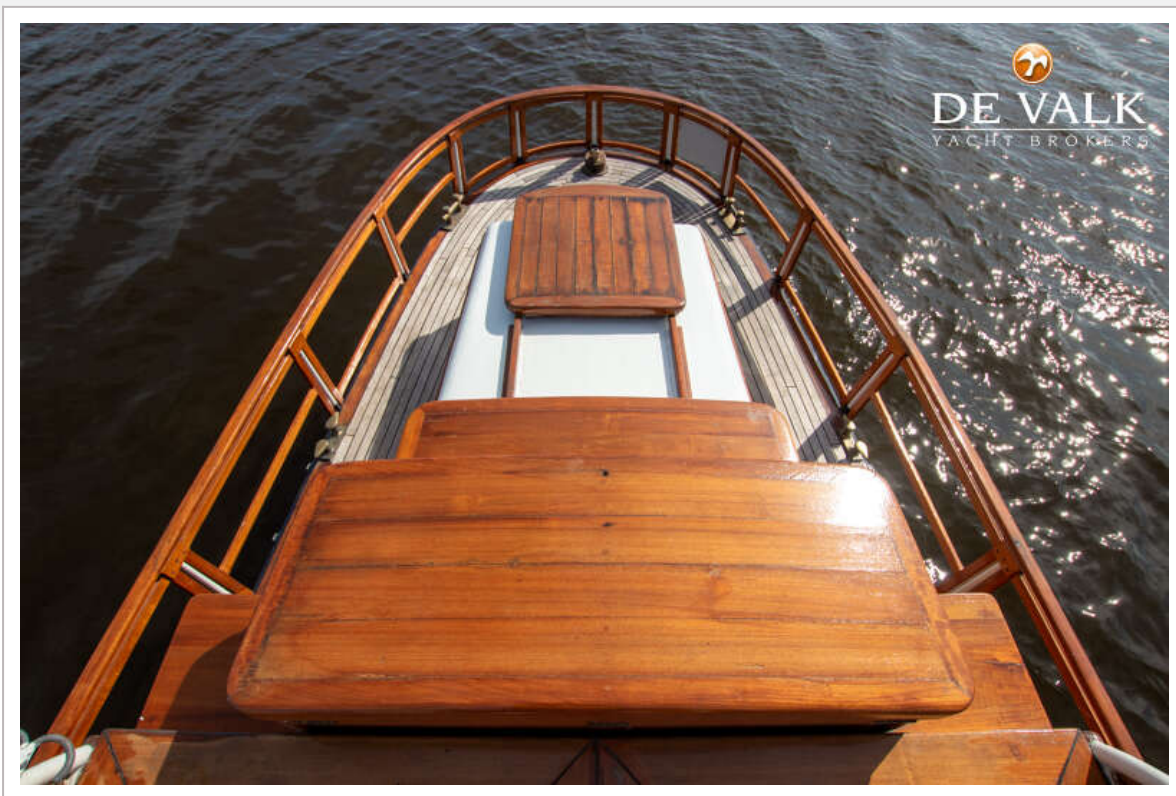
BAKDEKKOTTER 1600



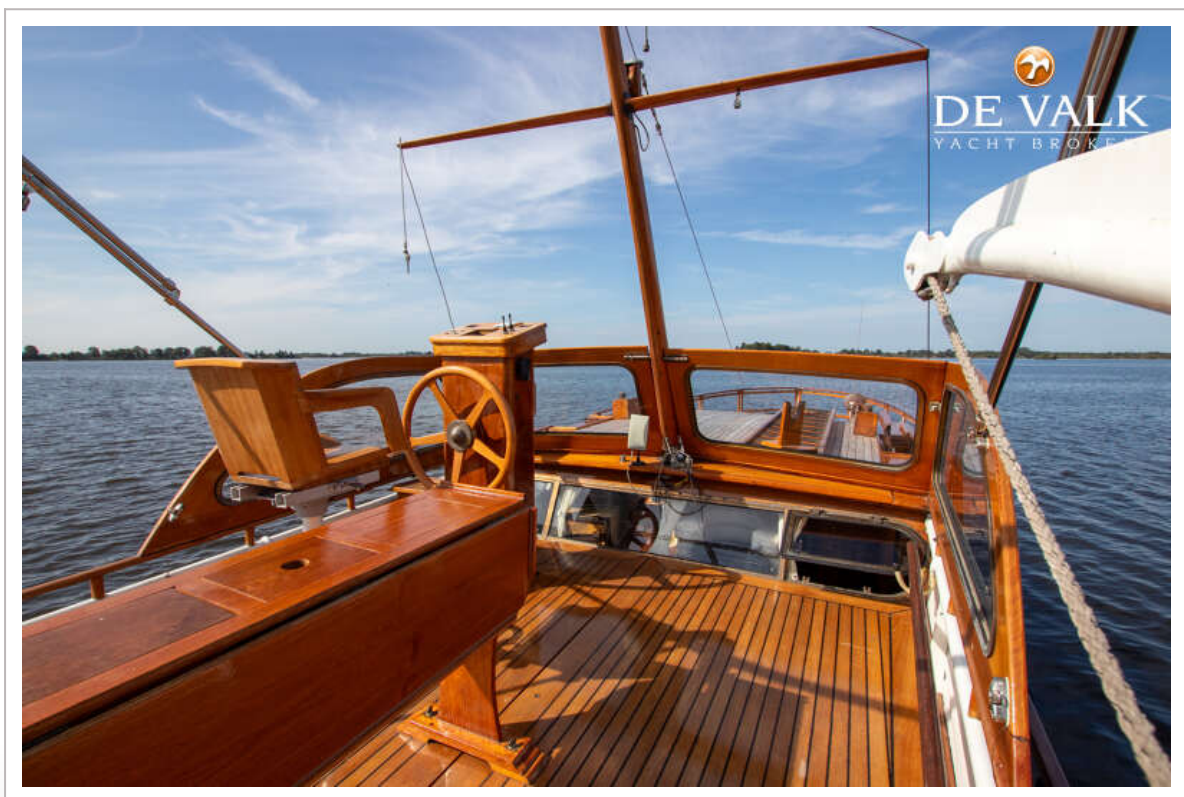
BAKDEKKOTTER 1600



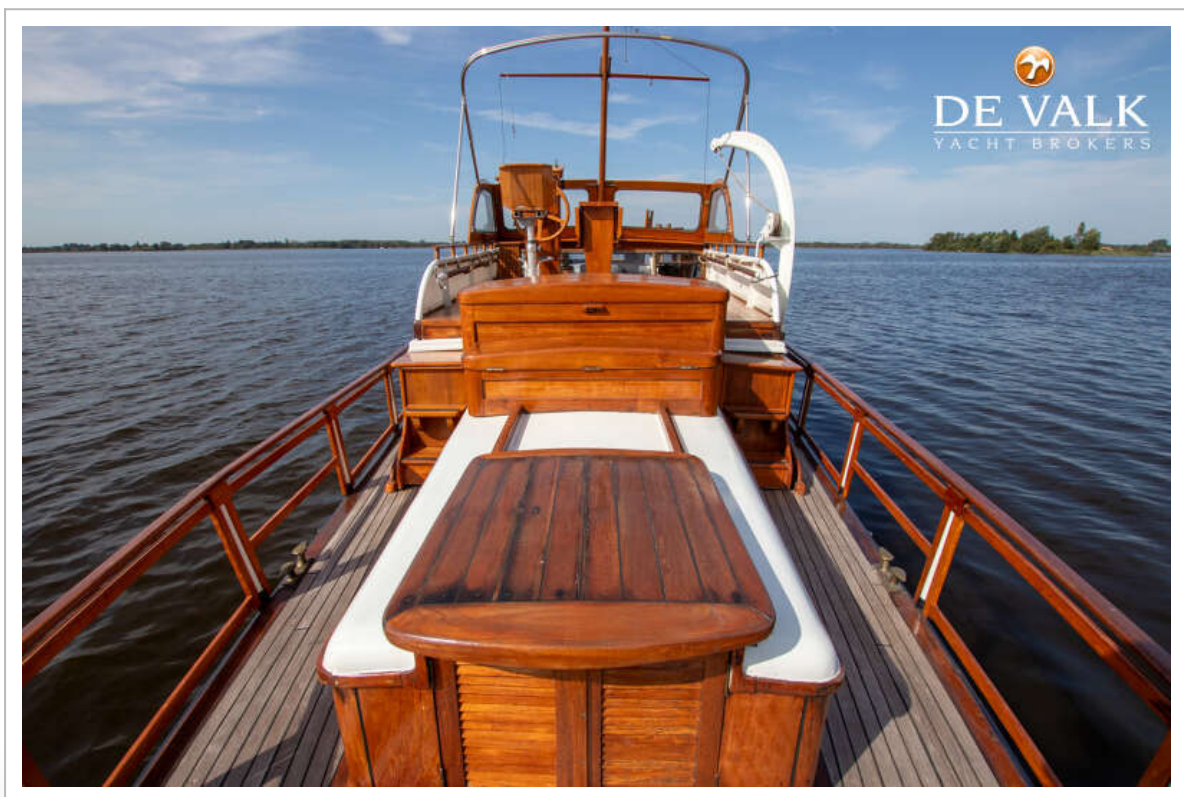
BAKDEKKOTTER 1600



BAKDEKKOTTER 1600



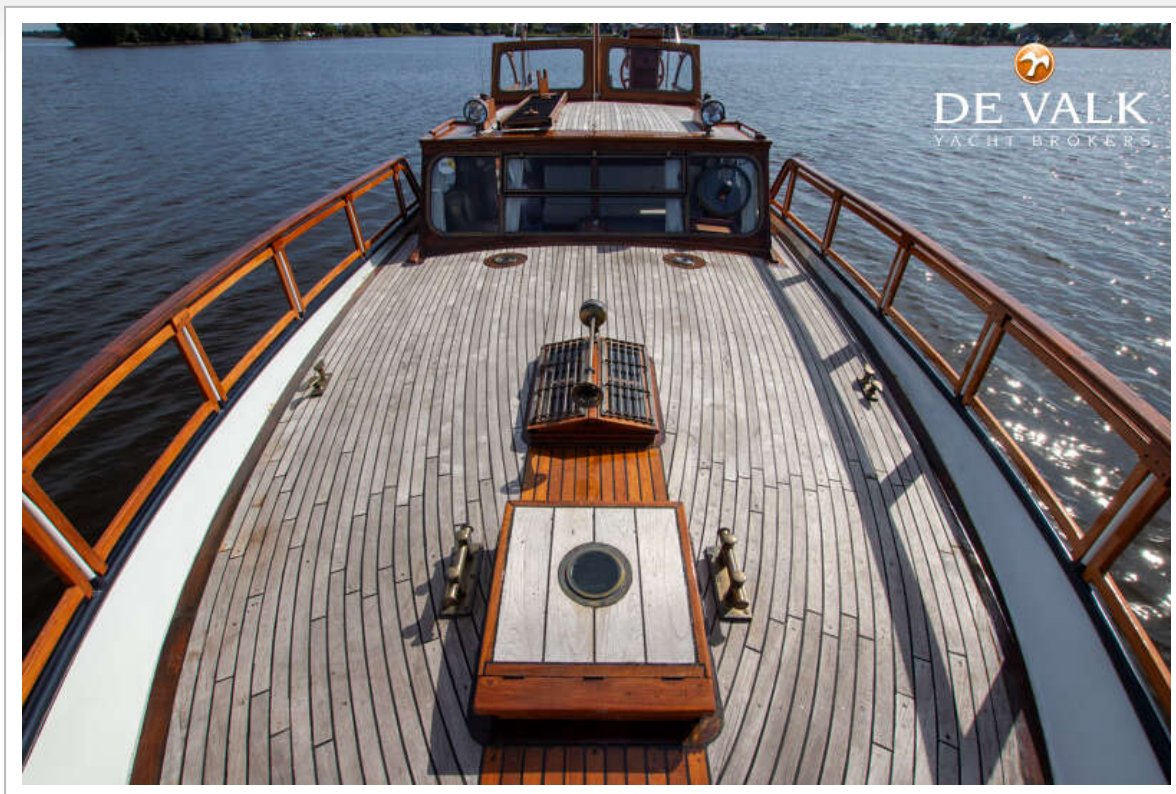
BAKDEKKOTTER 1600



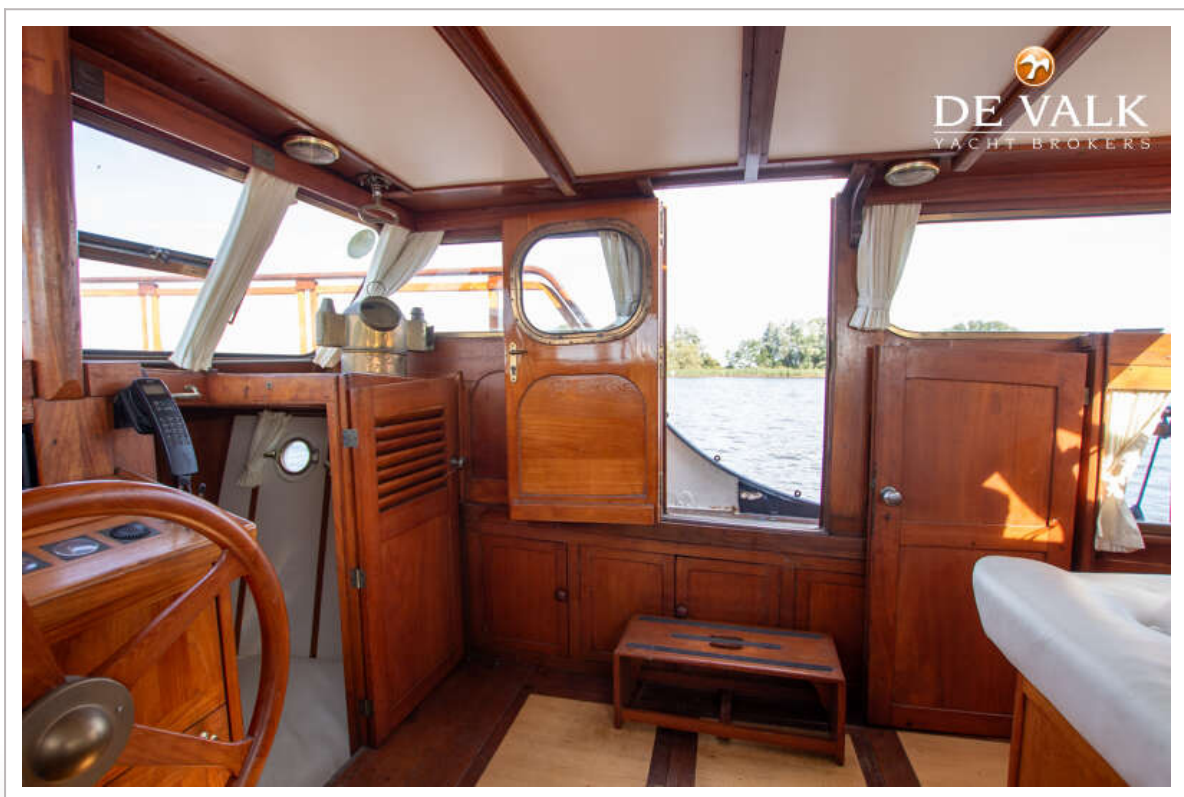
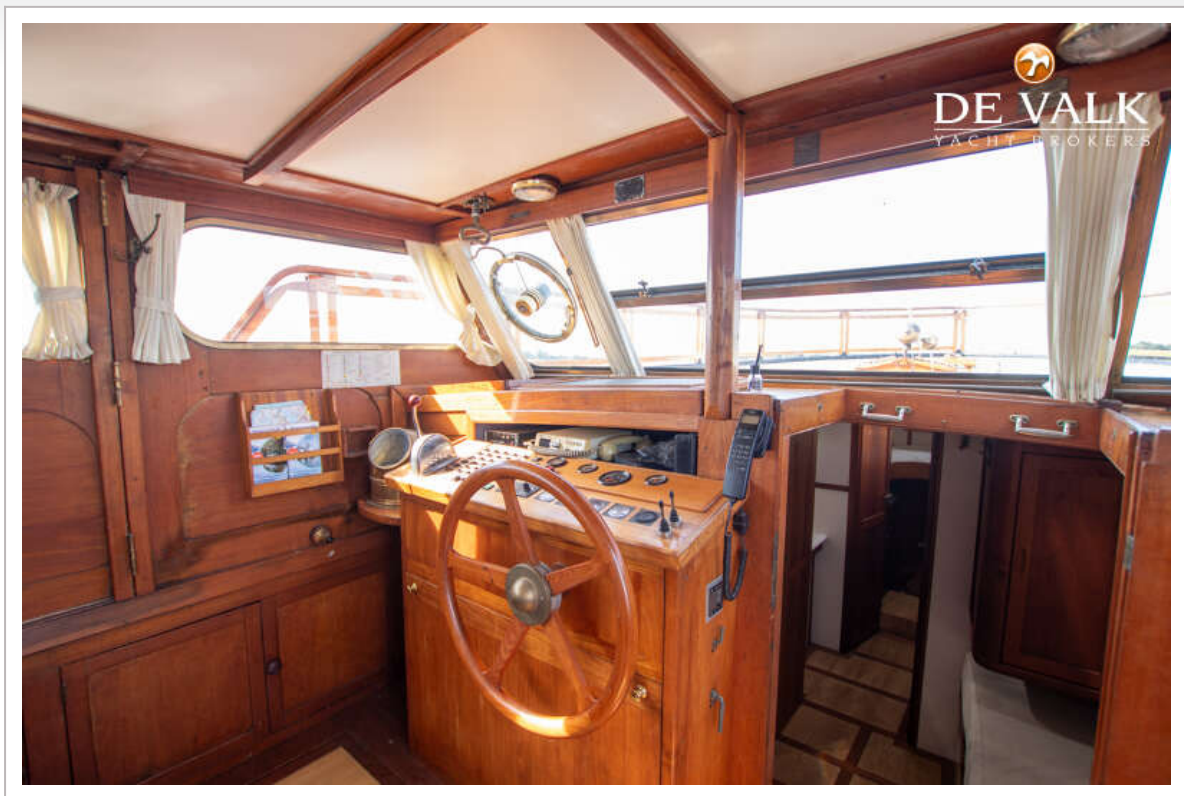
BAKDEKKOTTER 1600



BAKDEKKOTTER 1600



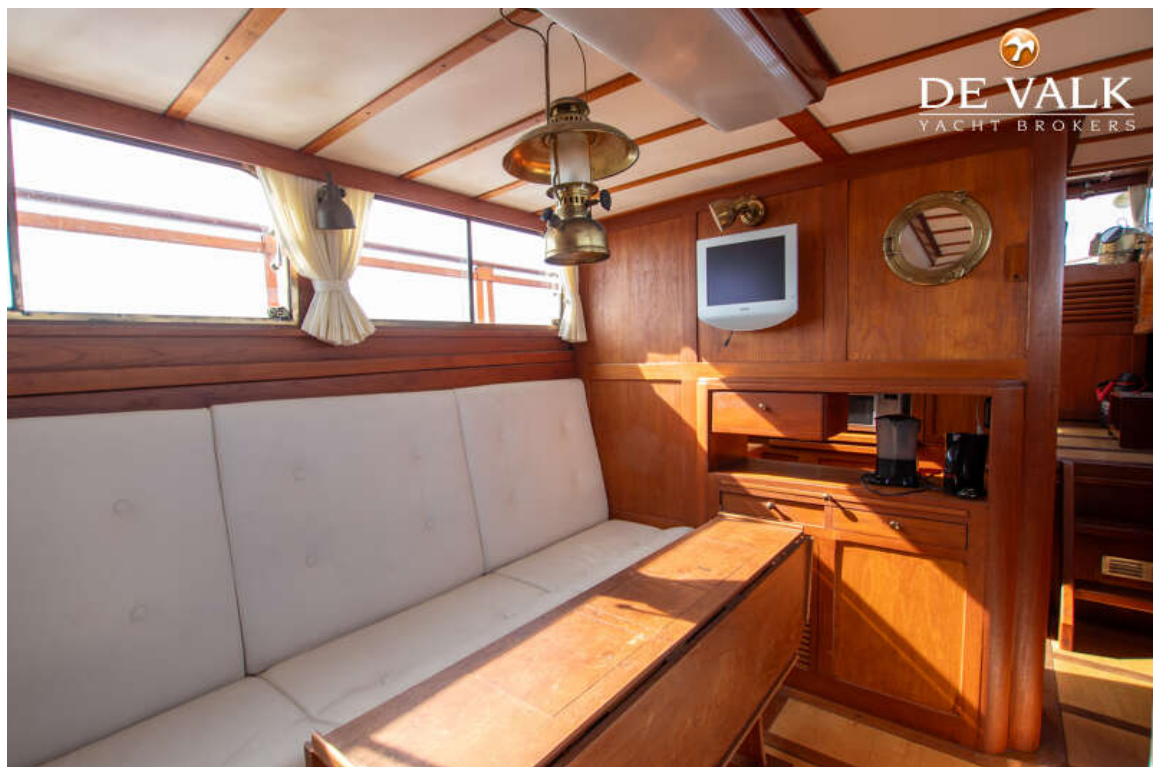
BAKDEKKOTTER 1600



BAKDEKKOTTER 1600



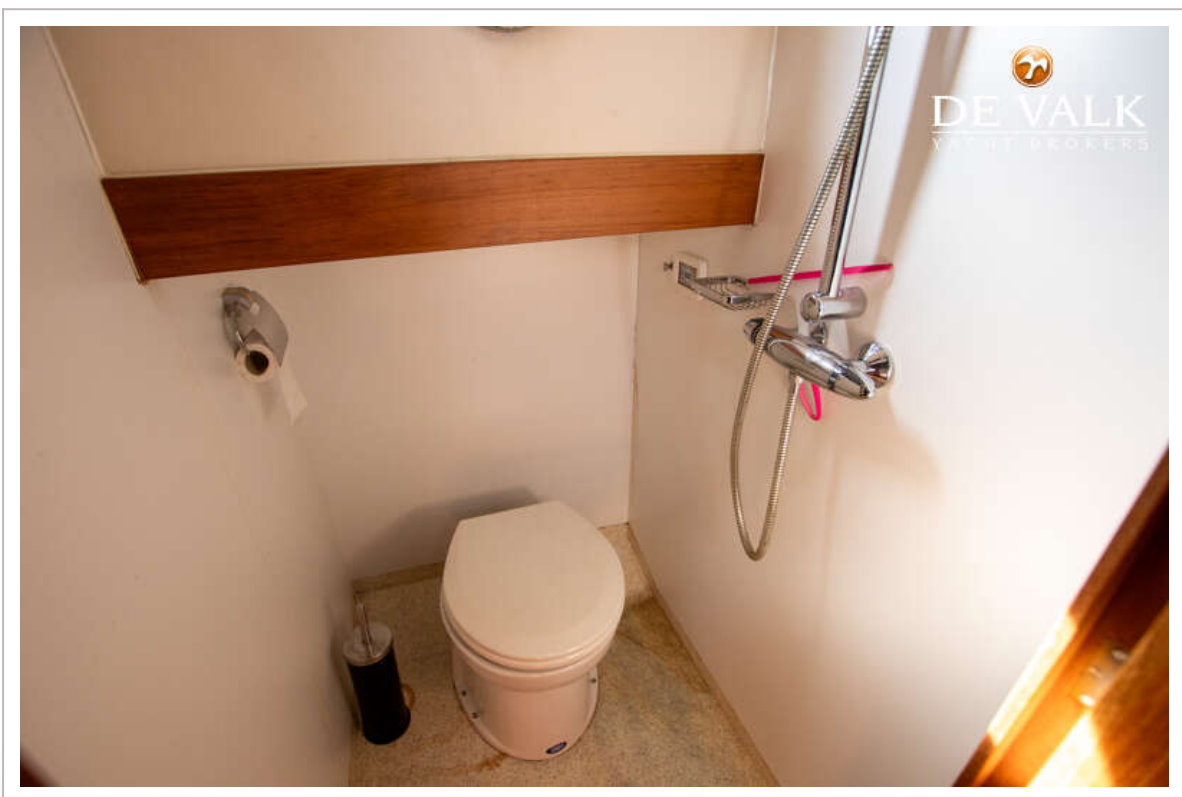
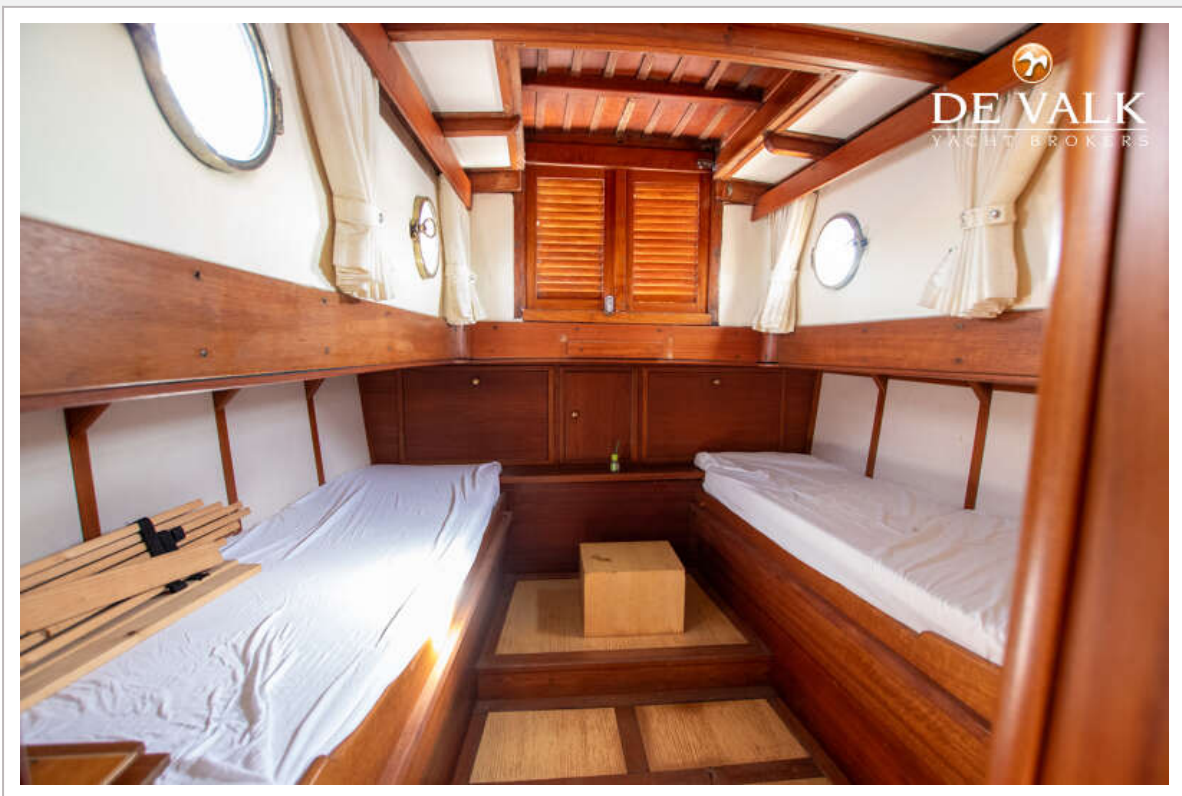
BAKDEKKOTTER 1600



BAKDEKKOTTER 1600



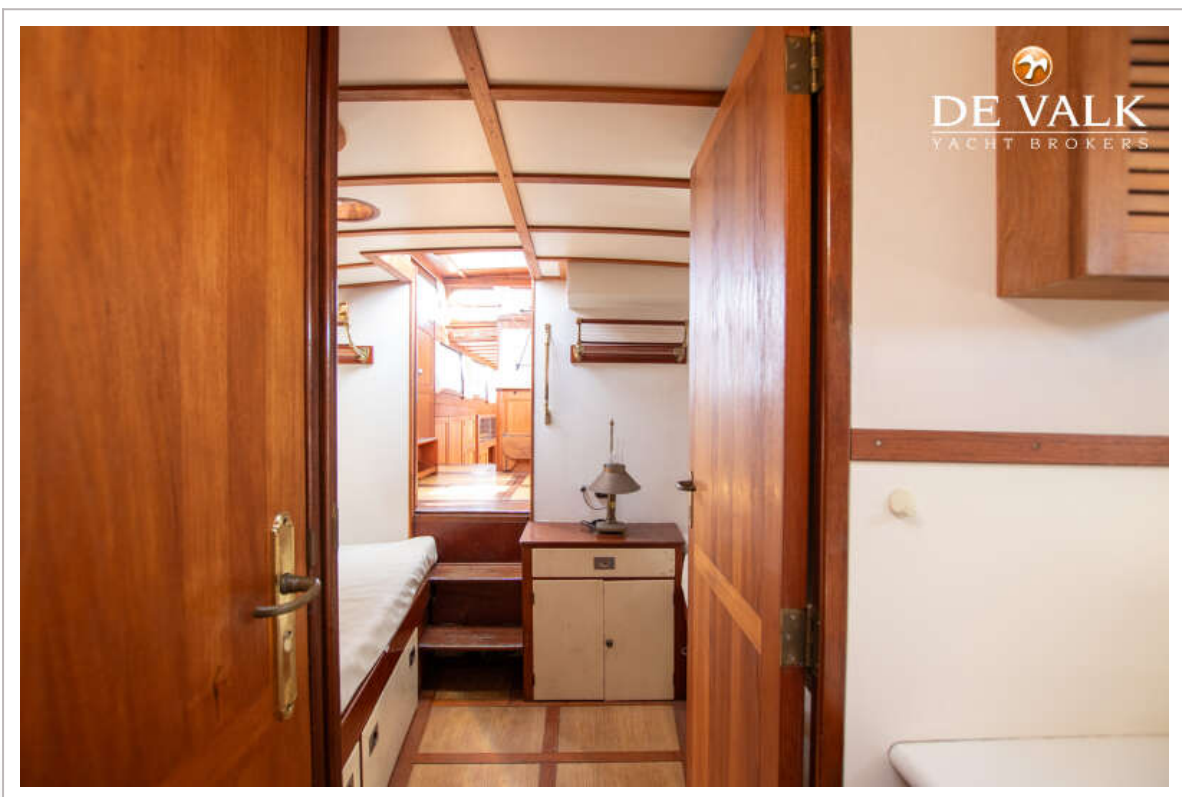
BAKDEKKOTTER 1600



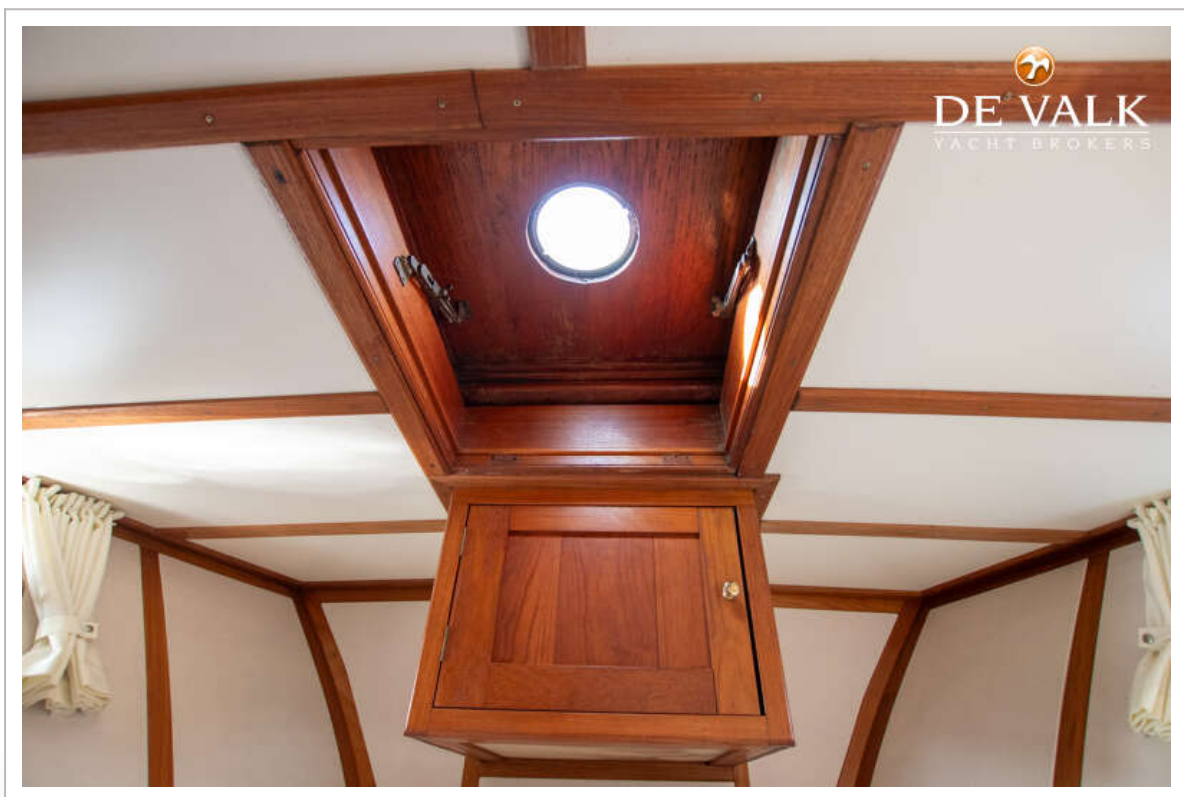
BAKDEKKOTTER 1600



BAKDEKKOTTER 1600



BAKDEKKOTTER 1600



BAKDEKKOTTER 1600

