



DE VALK
YACHT BROKERS



CATFISH 1300



DE VALK
YACHT BROKERS

CATFISH 1300

BROKER'S COMMENTS

Catfish 1300 "Captain Willem Barentsz" is built by Jachtbouw Peter Linskens and designed by Vripack. This spacious steel motor yacht is fitted with three cabins and three bathrooms! Large aftdeck with round seat and enough space for extra chairs to enjoy sailing with all your friends and family. Vetus Deutz 159 hp. diesel engine, electric bow- and sternthruster, Kabola central heating. Built for her first and only owner who kept her in luxury charter, delivery without VAT possible. Very well maintained and in a very nice condition! Viewing highly recommended.

Arne Doodeman

SPECIFICATIONS

Dimensions	13.50 x 4.30 x 1.20 (m)	Builder	Jachtbouw Peter Linskens B.V.
Built	2003	Cabins	3
Material	Steel	Berths	6
Engine(s)	1 x Vetus Deutz DT64425E diesel	Hp/Kw	159.00 (hp), 116.87 (kw)
Asking price	sold (VAT)	Lying	elsewhere / Not at sales office

CONTACT

Sales office	De Valk Sneek	Telephone	+31 (0)515 42 80 30
Address	Zwolsmanweg 7 8606 KC Sneek NL	E-mail	sneek@devalk.nl

DISCLAIMER

These particulars are given in good faith as supplied but cannot be guaranteed.



CATFISH 1300

GENERAL

Model	CATFISH 1300
Type	motor yacht
LOA (m)	13,50
Beam (m)	4,30
Draft (m)	1,20
Air draft (m)	3,00
Year built	2003
Builder	Jachtbouw Peter Linskens B.V.
Country	The Netherlands
Designer	Vripack
Displacement (t)	21
CE norm	B
Hull material	steel
Hull colour	blue
Hull shape	hard chine
Superstructure material	steel
Rubbing strake	stainless steel
Deck material	steel
Deck finish	anti-slip paint
Antifouling (year)	2015
Window frame	aluminium
Deckhatch	yes
Portholes	aluminium
Insulation	rockwool
Radar arch	collapsible
Fuel tank (litre)	steel 1200 l.
Level indicator (fuel tank)	yes
Freshwater tank (litre)	stainless steel 1000 l.
Level indicator (freshwater)	Vetus
Blackwater tank (litre)	stainless steel 200 l.



Level indicator (blackwater)	Vetus
Wheel steering	hydraulic
Flybridge helm position	yes
More info on paintwork	Superstructure painted in 2013 and hull painted in 2015

ACCOMMODATION

Cabins	3
Berths	6
Floor	carpet
Aft deck	yes
Saloon	yes
Heating	central heating Kabola B12 tap
Heating 2	diesel ducted hot air Webasto Airtop 2000
Aft Cabin	yes
Dinette	yes
Opening door to aft deck	yes
Galley	yes
Countertop	yes
Sink	stainless steel
Cooker	calor gas Techimpex 4-burner
Extractor	yes
Microwave	LG Intelio microwave with grill
Fridge	with freezing compartment Coolmatic MDC-110
Hot water system	on central heating
Water pressure system	yes
Owners cabin	French bed
Wardrobe	hanging and shelves
Bathroom	en suite
Toilet	en suite
Toilet system	electric Techma
Wash basin	in the bathroom



CATFISH 1300

Guest cabin 1	double bed
Wardrobe	hanging and shelves
Bathroom	en suite
Toilet	
Toilet system	electric Techma
Wash basin	in the bathroom
Shower	yes
Guest cabin 2	twin single
Wardrobe	shelves
Bathroom	en suite
Toilet system	electric Techma
Wash basin	in the bathroom
Shower	yes

MACHINERY

No of engines	1
Make	Vetus Deutz
Type	DT64425E
HP	159,00
kW	116,87
Fuel	diesel
Year installed	2003
Consumption (l/hr)	8
Engine hours	5500 (18-2-2016)
Engine cooling system	freshwater heat exchanger
Drive	shaft
Engine controls	manual
Gearbox	hydraulic ZF 45-1
Bowthruster	electric Sidepower
Sternthruster	electric Sidepower
Exhaust	watercooled



CATFISH 1300

Thrust bearing	Aquadrive
Propeller type	fixed
Propeller blades	4-bladed
Propeller shaft material	stainless steel
Shaft lubrication	water
Electric bilge pump	yes
Electrical installation	yes
Start battery	engine start over bowthruster battery
Service battery	2x 260 ah zenith deep cycle
Bowthruster battery	2x 165 ah
Sternthruster battery	2x 165 ah
Battery monitor	Victron Phoenix multi control
Battery charger/inverter	Victron Phoenix multi plus 24/3000/70
Shorepower	with cable
Extra info	separate fuel filter
Extra info	approx. 5500 engine hours, the clock is renewed

NAVIGATION

Electric compass	Raymarine ST60+
Depth sounder	Raymarine ST60 tridata
Log	Raymarine ST60 tridata
Rudder angle indicator	Raymarine ST60

EQUIPMENT

Sprayhood	yes
Cockpit cover	yes
Winter cover	yes
Cockpit cushions	yes
Cockpit table	yes
Bathing platform	yes
Boarding ladder	stainless steel



Transom door	yes
Deck shower	yes
Anchor	Danforth
Anchor chain	galvanized chain
Windlass	manual Vetus
Sea railing	stainless steel
Grab rail (superstructure)	stainless steel
Railing side opening gates	yes
Wiper	3x Vetus heavy duty
Horn	yes
Fenders	yes
Mooring lines	yes
TV	Avtex flatscreen
TV receiver	yes
Surround Sound System	Sony home audio system
Fire extinguisher	yes
Extinguisher in engine room	Firepro



CATFISH 1300



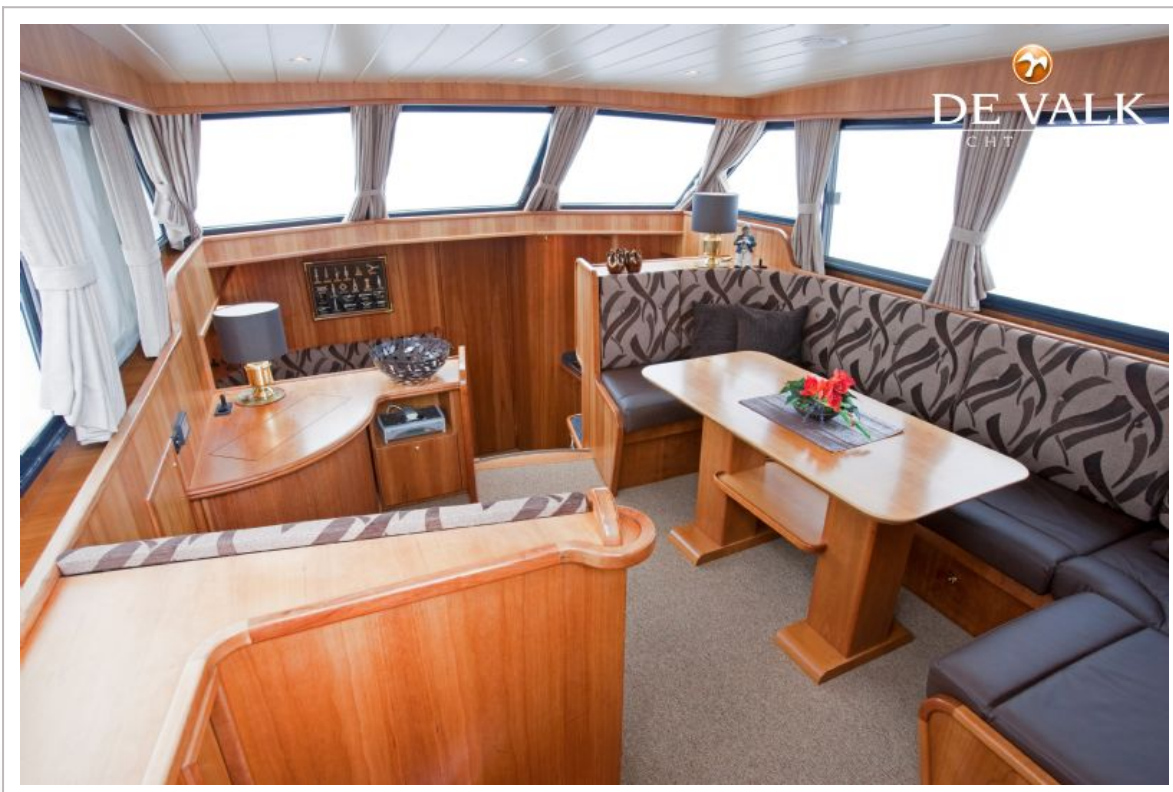
CATFISH 1300



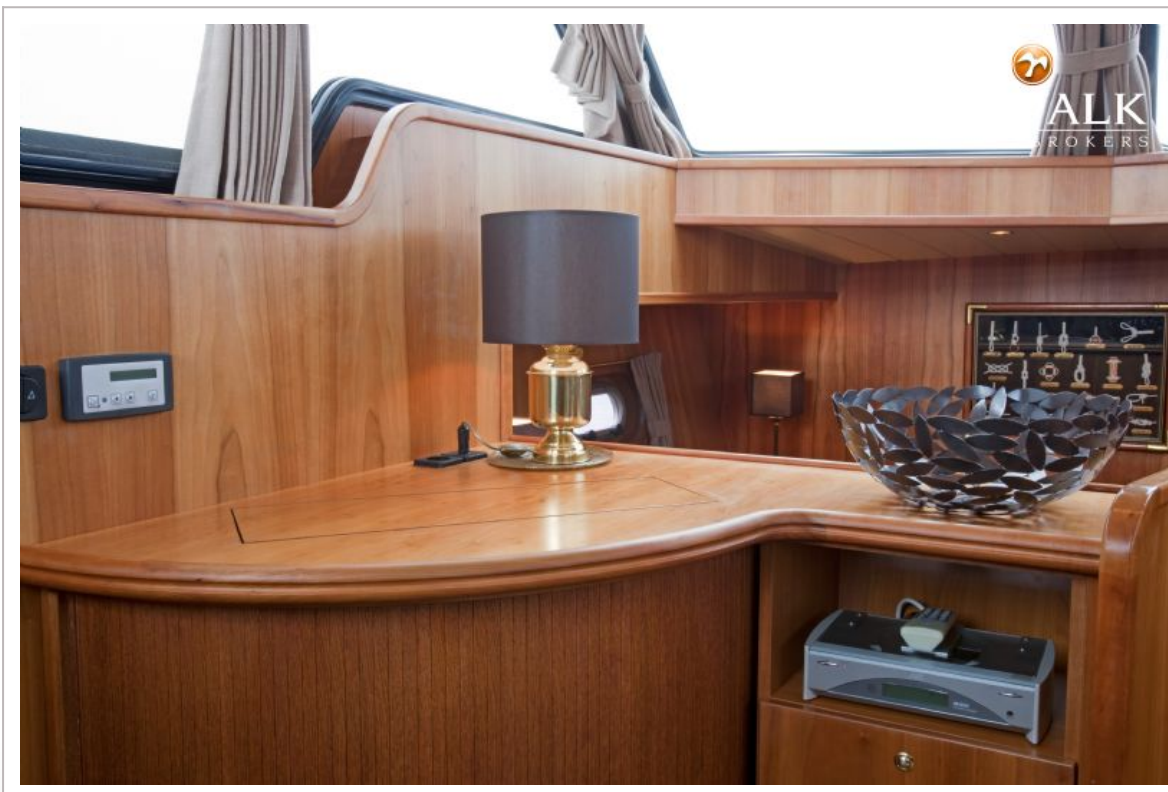
CATFISH 1300



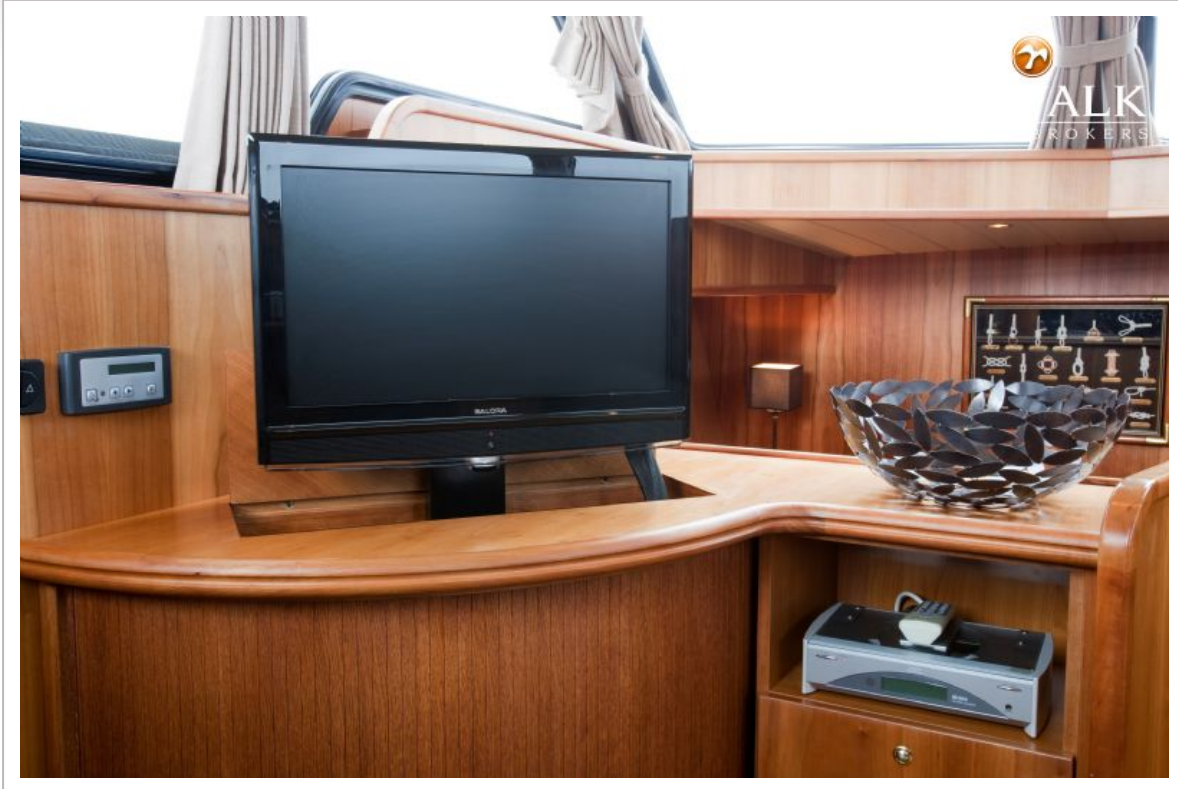
CATFISH 1300



CATFISH 1300



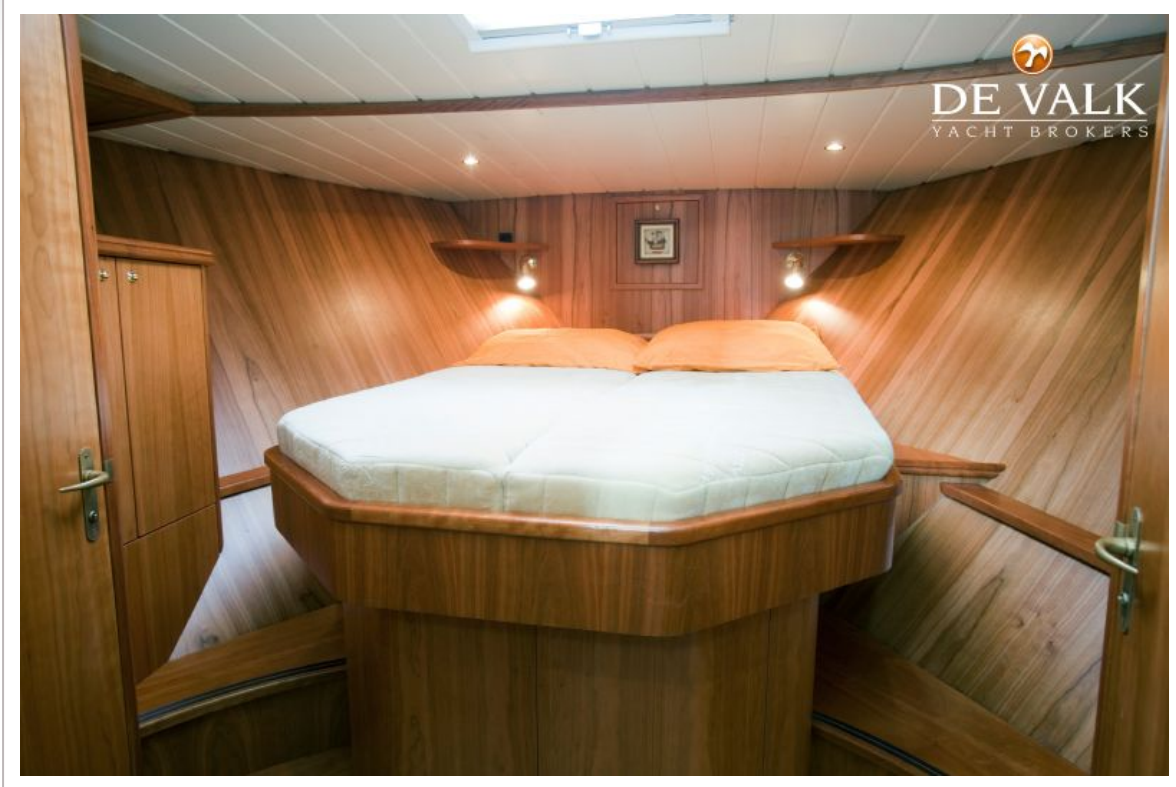
CATFISH 1300



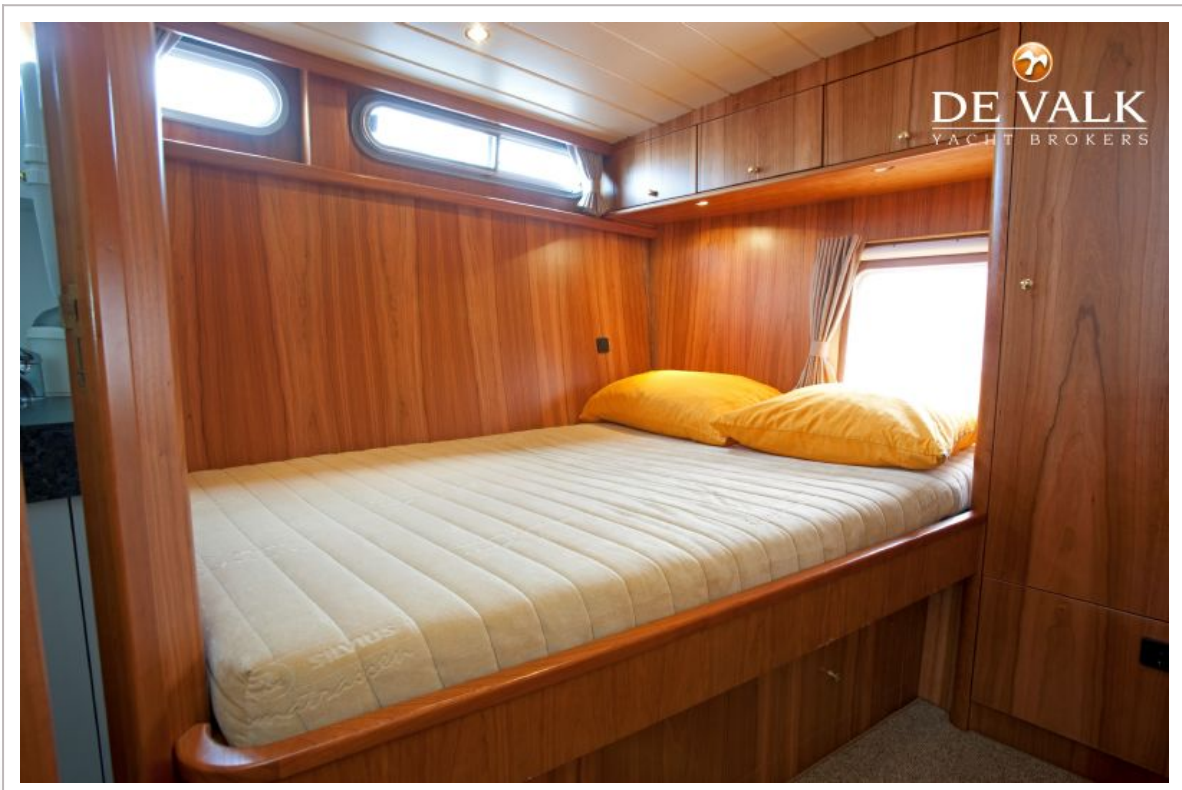
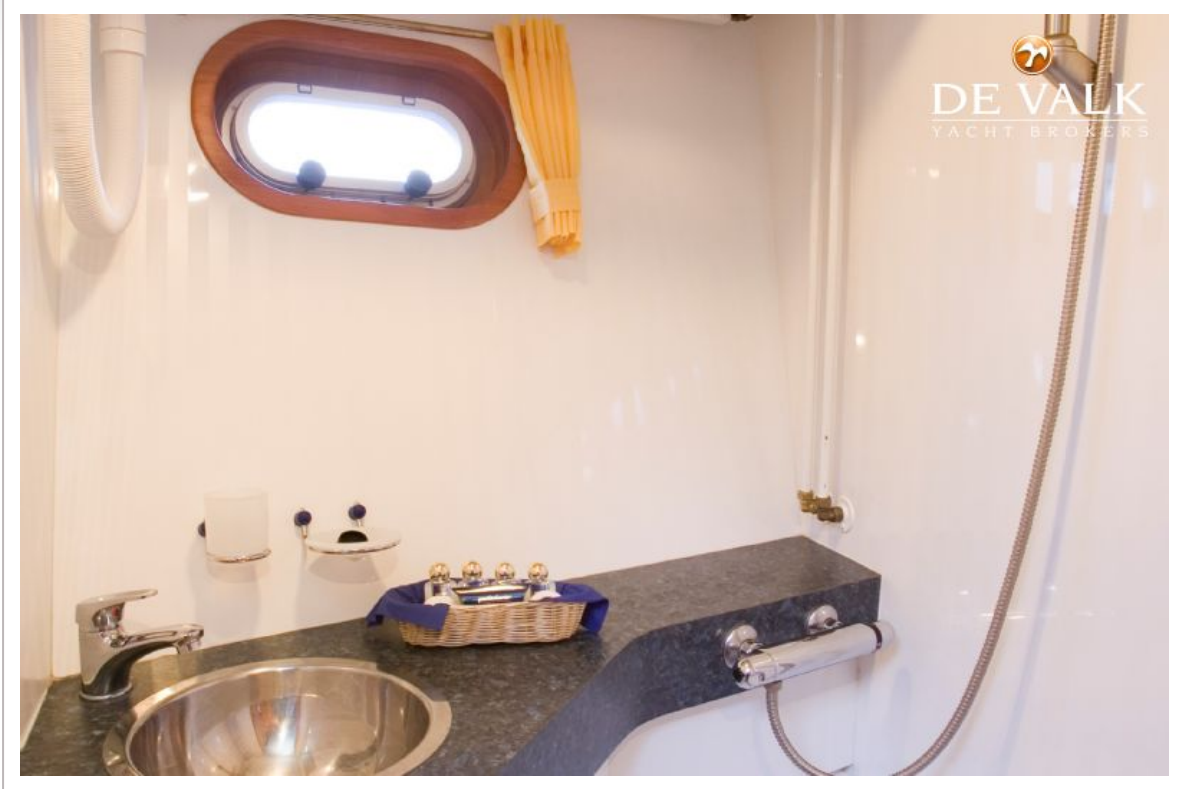
CATFISH 1300



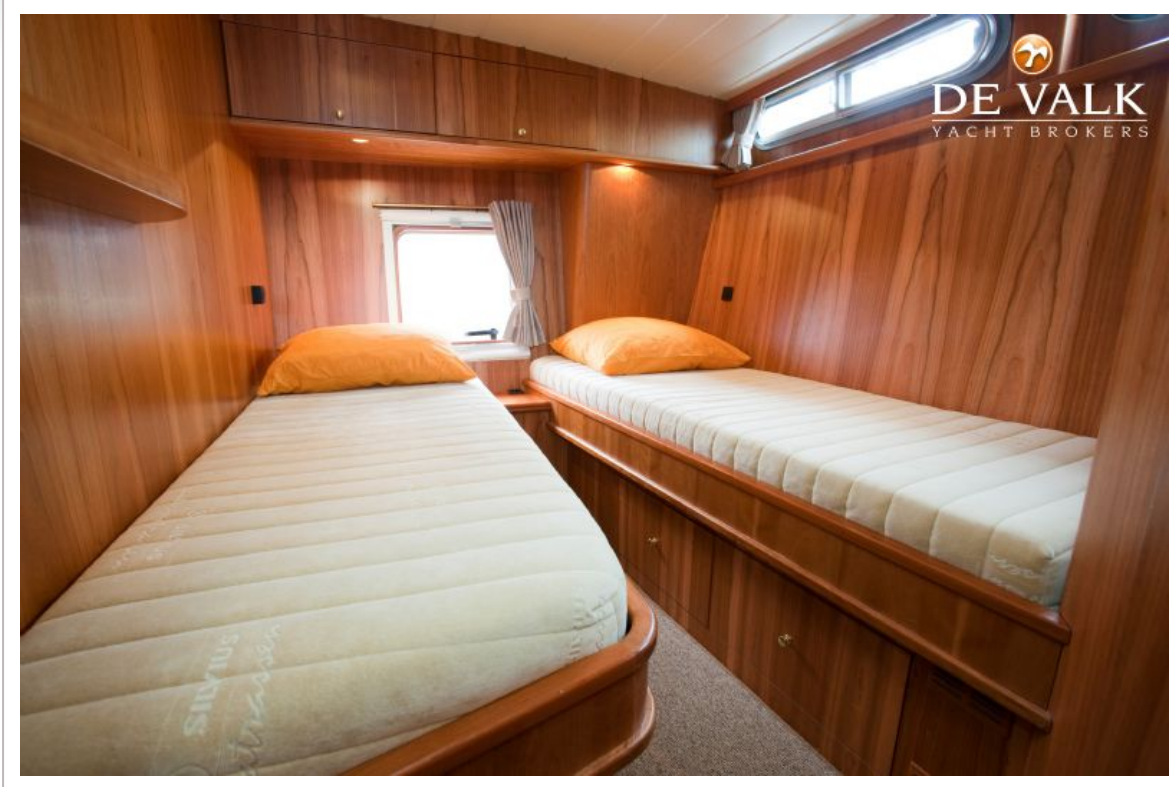
CATFISH 1300



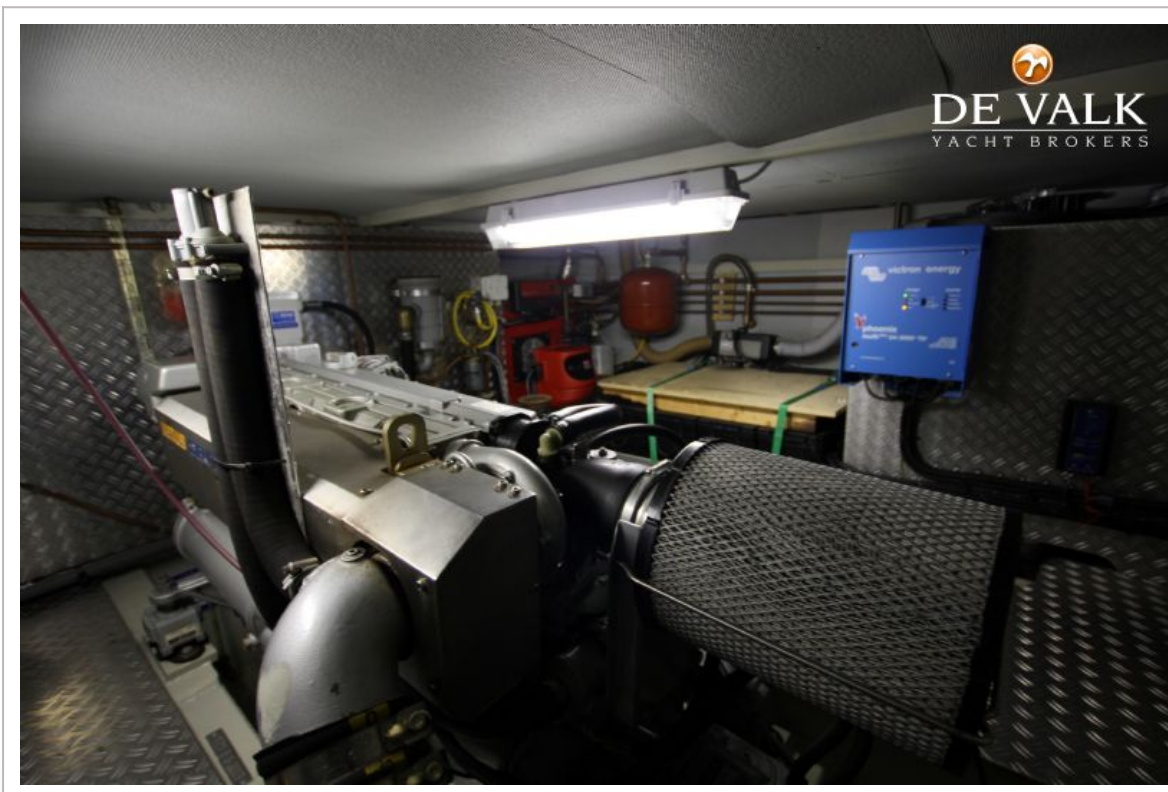
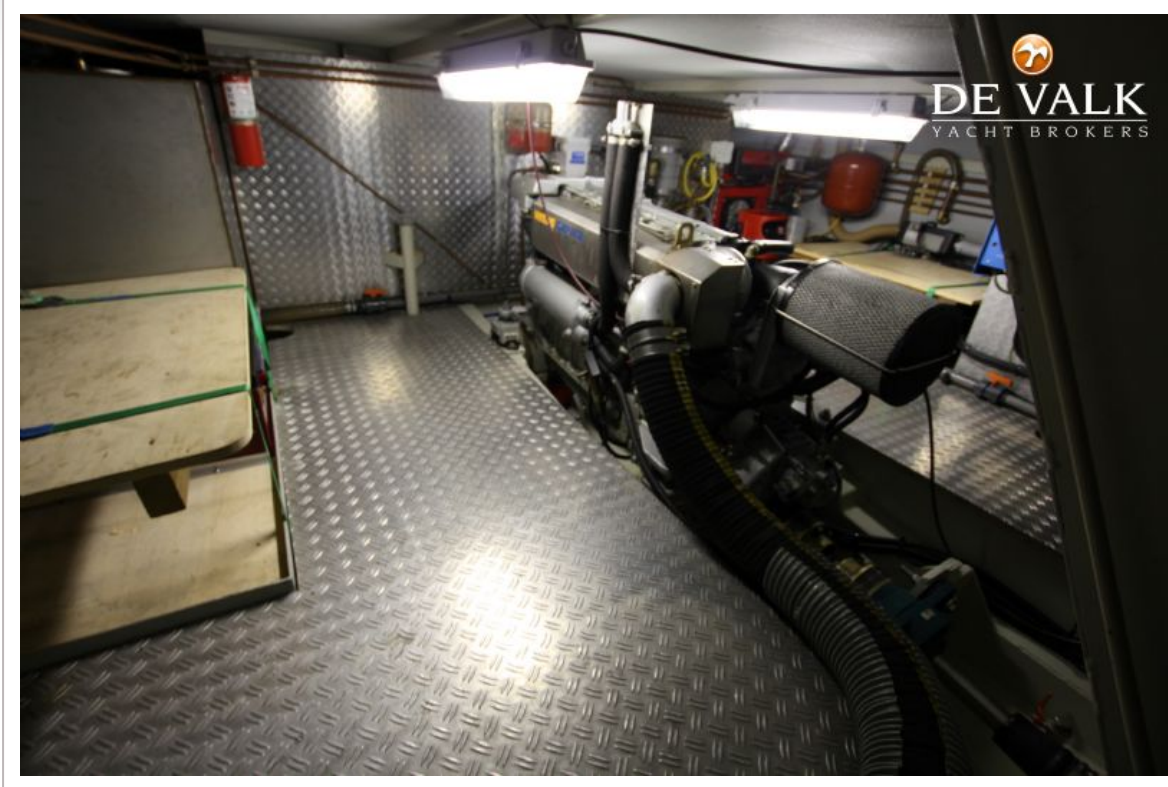
CATFISH 1300



CATFISH 1300



CATFISH 1300



CATFISH 1300

