



DE VALK
YACHT BROKERS



OCEAN ALEXANDER 423 CLASSICO



DE VALK
YACHT BROKERS

OCEAN ALEXANDER 423 CLASSICO

BROKER'S COMMENTS

Ocean Alexander 423 Classico "Tuna": a GRP motor yacht of high quality. Seagoing and fast, but also on cruising speed is she very easy to handle. This beautiful GRP motor yacht has always been maintained by a professional yacht service company and has always been stored inside during the winter. This Ocean Alexander 423 is in a very good condition, is equipped with two spacious cabins, a well maintained interior, two toilets, Onan generator and electric cooking. Come to Sneek and visit "Tuna" now!

Peter Spruyt

SPECIFICATIONS

Dimensions	14.50 x 4.50 x 1.33 (m)	Builder	Ocean Alexander Co, LTD
Built	1995	Cabins	2
Material	GRP	Berths	4
Engine(s)	2 x Caterpillar 3208NA diesel	Hp/Kw	2 x 210.00 (hp), 154.35 (kw)
Asking price	sold (VAT)	Lying	at sales office

CONTACT

Sales office	De Valk Sneek	Telephone	+31 (0)515 42 80 30
Address	Zwolsmanweg 7 8606 KC Sneek NL	E-mail	sneek@devalk.nl

DISCLAIMER

These particulars are given in good faith as supplied but cannot be guaranteed.



OCEAN ALEXANDER 423 CLASSICO

GENERAL

Model	OCEAN ALEXANDER 423 CLASSICO
Type	motor yacht
LOA (m)	14,50
Beam (m)	4,50
Draft (m)	1,33
Air draft (m)	4,00
Headroom (m)	1,98
Year built	1995
Builder	Ocean Alexander Co, LTD
Country	Taiwan
Displacement (t)	12
Hull material	GRP
Hull colour	off-white
Hull shape	deep-V
Keel type	tandem keel
Superstructure material	GRP
Rubbing strake	stainless steel
Deck material	GRP
Deck finish	teak
Superstructure deck finish	synthetic teak Flybridge:
Cockpit deck finish	
Window frame	aluminium
Window material	glass
Deckhatch	yes
Portholes	stainless steel
Flybridge	yes
Mast can be lowered	hydraulic Electric/ Hydrolic
Fuel tank (litre)	aluminium 2x 1150 l.
Level indicator (fuel tank)	yes
Freshwater tank (litre)	stainless steel 2x 303 l.



OCEAN ALEXANDER 423 CLASSICO

Level indicator (freshwater)	yes
Blackwater tank (litre)	polyethylene 226 l. (F.R.P.)
Wheel steering	hydraulic
Inside helm position	yes
Flybridge helm position	hydraulic

ACCOMMODATION

Cabins	2
Berths	4
Interior	teak
Floor	teak
Saloon	yes
Headroom saloon (m)	1.98 m.
Heating	diesel ducted hot air Eberspacher 8 KW
Chart table	yes
Aft Cabin	yes
Galley	yes
Countertop	plastic
Sink	GRP
Cooker	ceramic Creda solarplus
Oven	& grill
Microwave	Bosch
Fridge	Coolmatic 193 l.
Freezer	yes
Wine cooler	2 x
Hot water system	220V + engine Boiler
Water pressure system	electrical
Owners cabin	French bed
Bed length (m)	2,00 mtr
Wardrobe	hanging and drawers
Bathroom	separate



Toilet	separate VDO
Toilet system	electric
Wash basin	at the toilet
Shower	separate
Guest cabin 1	v-bed
Bed length (m)	2,10 mtr
Wardrobe	hanging and drawers
Toilet	separate VDO
Toilet system	electric
Wash basin	at the toilet

MACHINERY

No of engines	2
Make	Caterpillar
Type	3208NA
HP	210,00
kW	154,35
Fuel	diesel
Year installed	1995
Consumption (l/hr)	8,2/hr/ per engine
Engine hours	1450 (1-3-2016)
Engine cooling system	freshwater heat exchanger
Drive	shaft
Engine controls	bowden cable
Gearbox	hydraulic
Bowthruster	electric Sidepower 8 Kw.
Sternthruster	electric Vetus 160 Kgf.
Propeller type	fixed
Propeller blades	4-bladed
Propeller shaft material	stainless steel
Shaft lubrication	water



OCEAN ALEXANDER 423 CLASSICO

Electric bilge pump	yes
Electrical installation	12/220 Volt
Generator	wet exhaust Onan 6.5 kW
Running hours generator	283,3
Start battery	Bosch 180 Ah
Service battery	Bosch 180 Ah
Generator battery	1x
Sternthruster battery	AGm 2x 50 Ah
Battery charger	Victron Phoenix 12/50
Diode battery combiners	Victron 2x
Shorepower	with cable
Trimtabs	Bennet V351
Extra info	3 bladed props as spare

NAVIGATION

Compass	Silva
Compass on flybridge	Silva
Depth sounder	VDO
Log	VDO
VHF	Shipmate RS 8300
Autopilot	Autohelm ST 7000
Radar	Furuno 48 mijl 1931 Ferropilot
Plotter	Simrad CX 44
Navtex	Defect
Camera	Multitronic
Loudhailer	yes

EQUIPMENT

Fixed windscreen	yes
Cockpit cushions	For flybridge
Bathing platform	yes



OCEAN ALEXANDER 423 CLASSICO

Boarding ladder	stainless steel SB
Bow ladder	stainless steel
Deck shower	yes
Anchor	CQR Plough
Anchor chain	yes
Windlass	electrical Maxwell Nilsson VWC 800C
Capstan	yes
Deck wash	yes
Sea railing	stainless steel
Grab rail (superstructure)	yes
Railing side opening gates	3 x
Wiper	3x
Horn	electric
Fenders	yes
Mooring lines	yes
Radio-cd player	Blaupunkt radio
Cockpit speakers	Flybridge
Speakers in salon	yes
Clock - barometer	yes



OCEAN ALEXANDER 423 CLASSICO



OCEAN ALEXANDER 423 CLASSICO



OCEAN ALEXANDER 423 CLASSICO



OCEAN ALEXANDER 423 CLASSICO



OCEAN ALEXANDER 423 CLASSICO



OCEAN ALEXANDER 423 CLASSICO



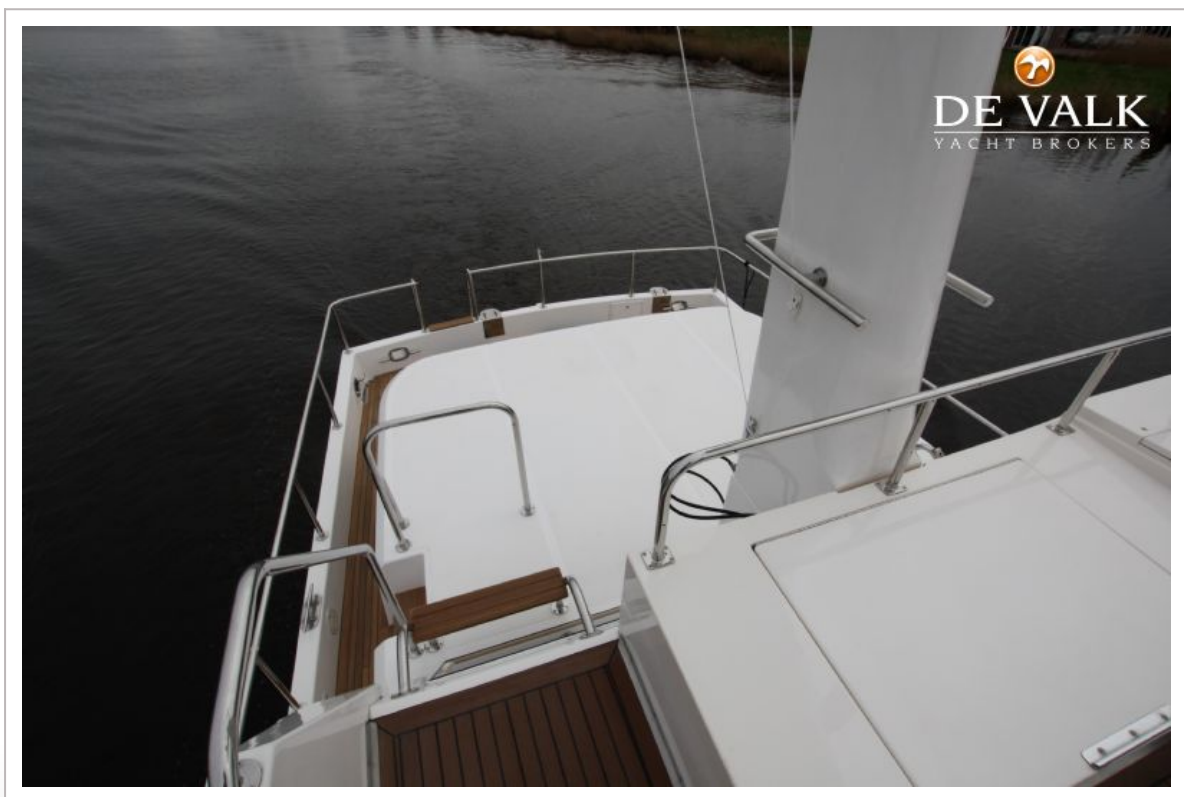
OCEAN ALEXANDER 423 CLASSICO



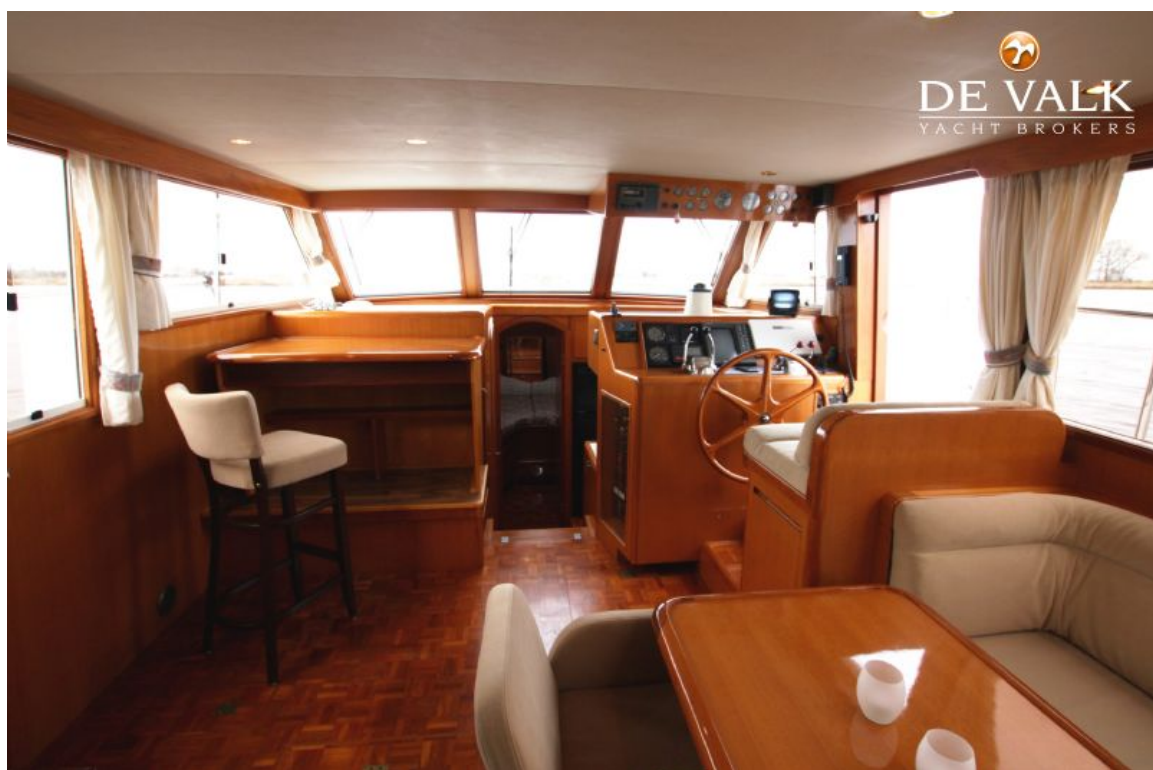
OCEAN ALEXANDER 423 CLASSICO



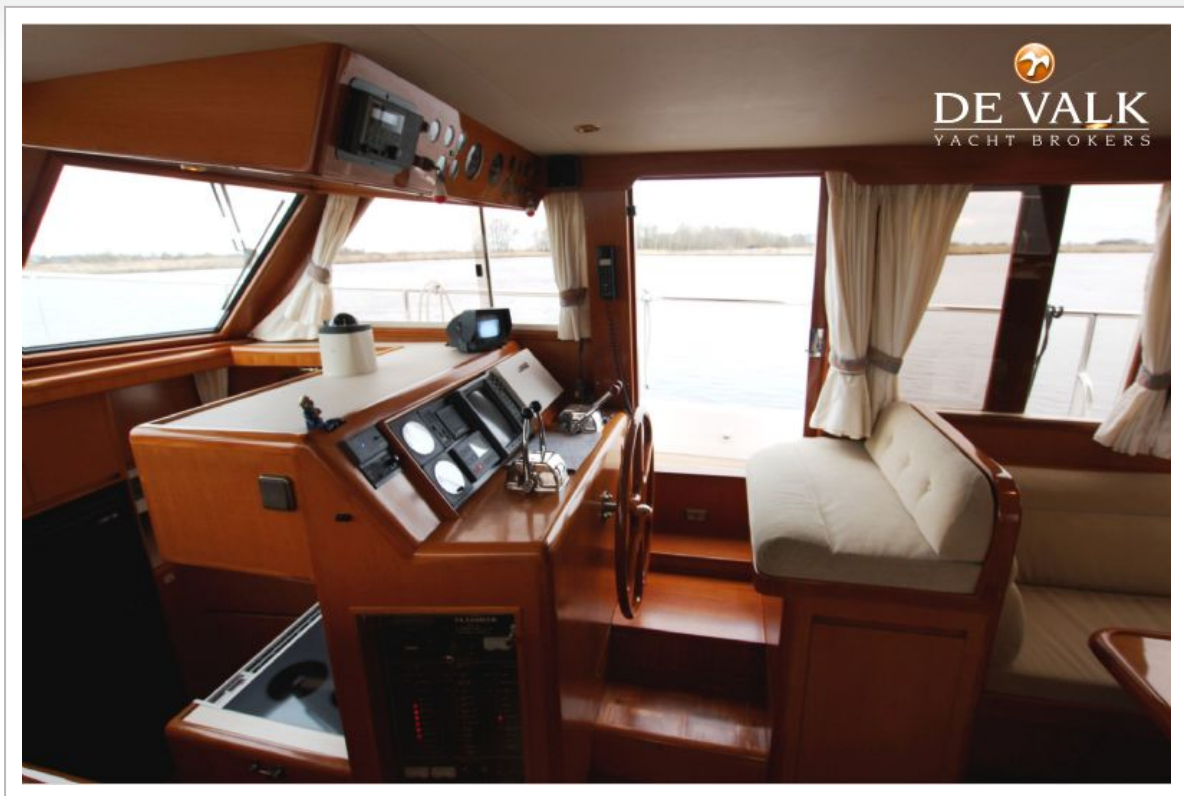
OCEAN ALEXANDER 423 CLASSICO



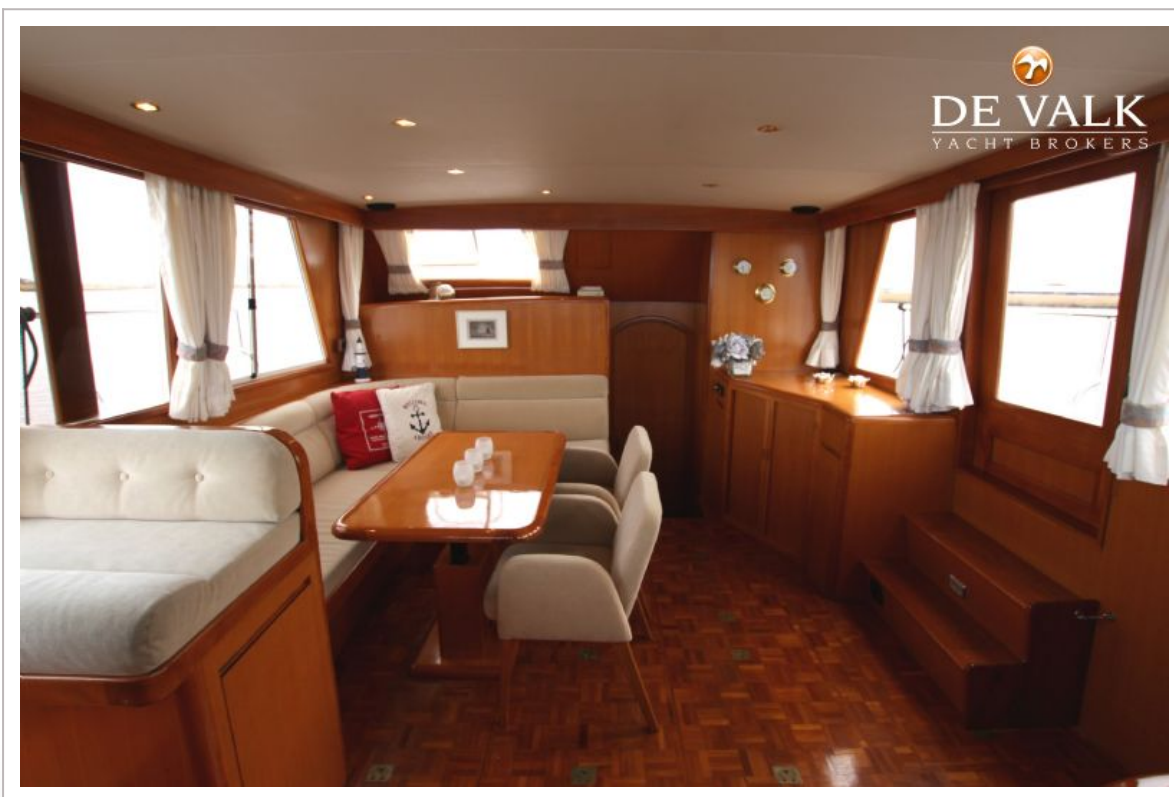
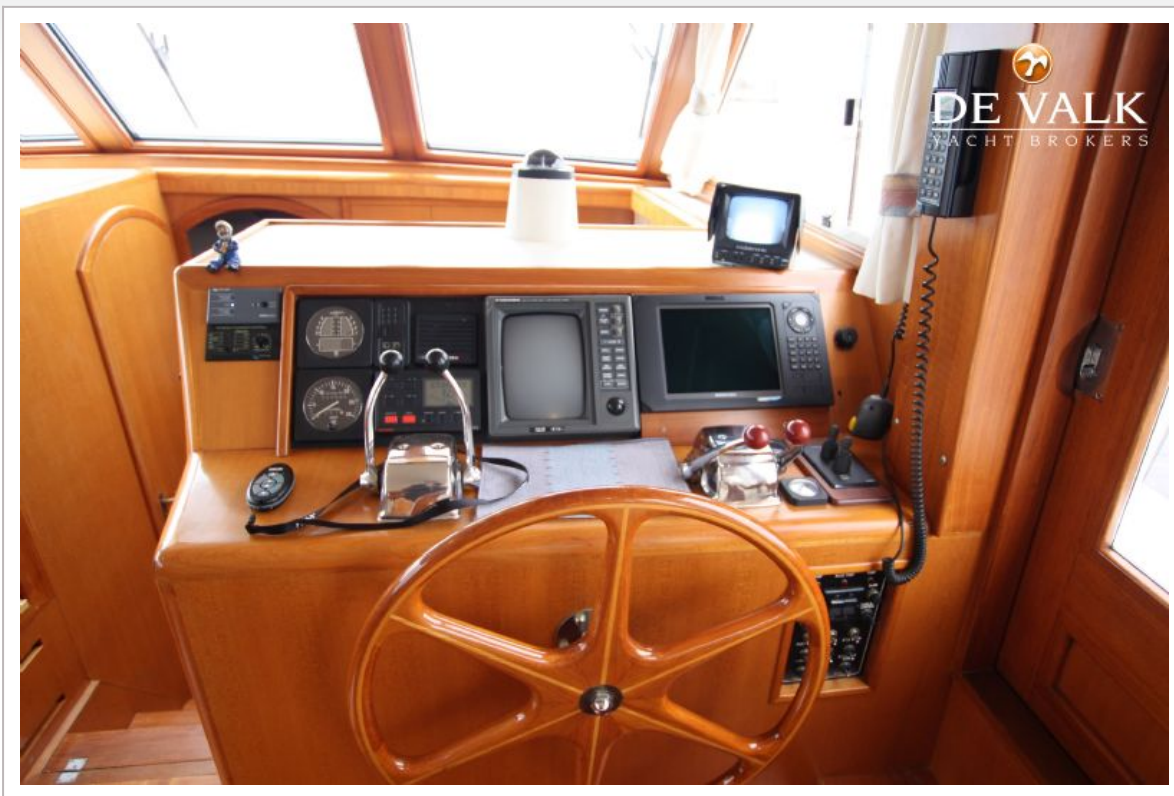
OCEAN ALEXANDER 423 CLASSICO



OCEAN ALEXANDER 423 CLASSICO



OCEAN ALEXANDER 423 CLASSICO



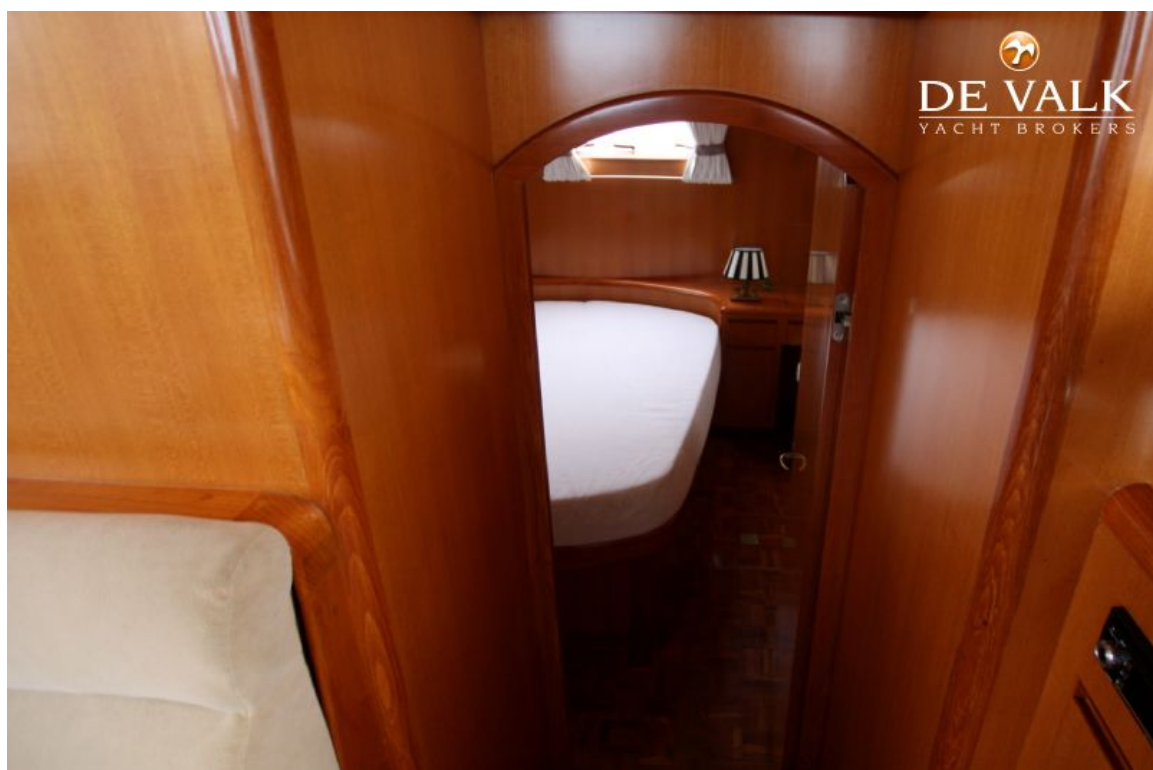
OCEAN ALEXANDER 423 CLASSICO



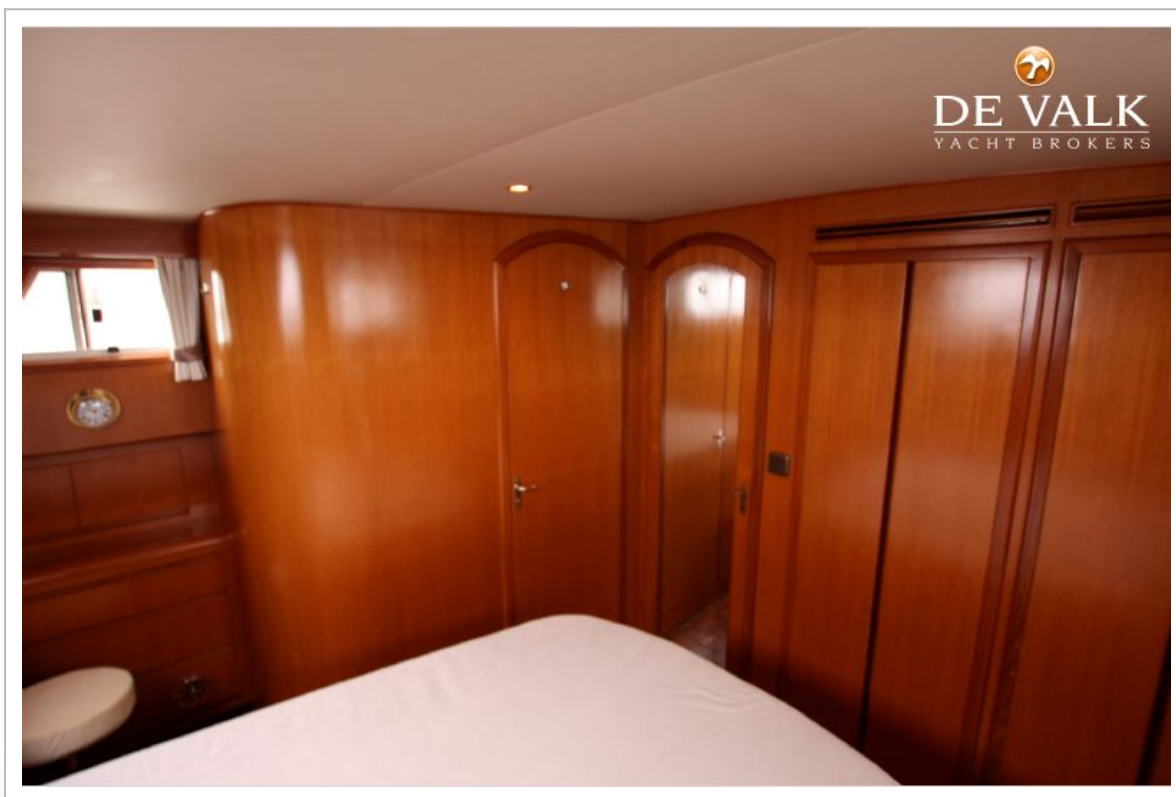
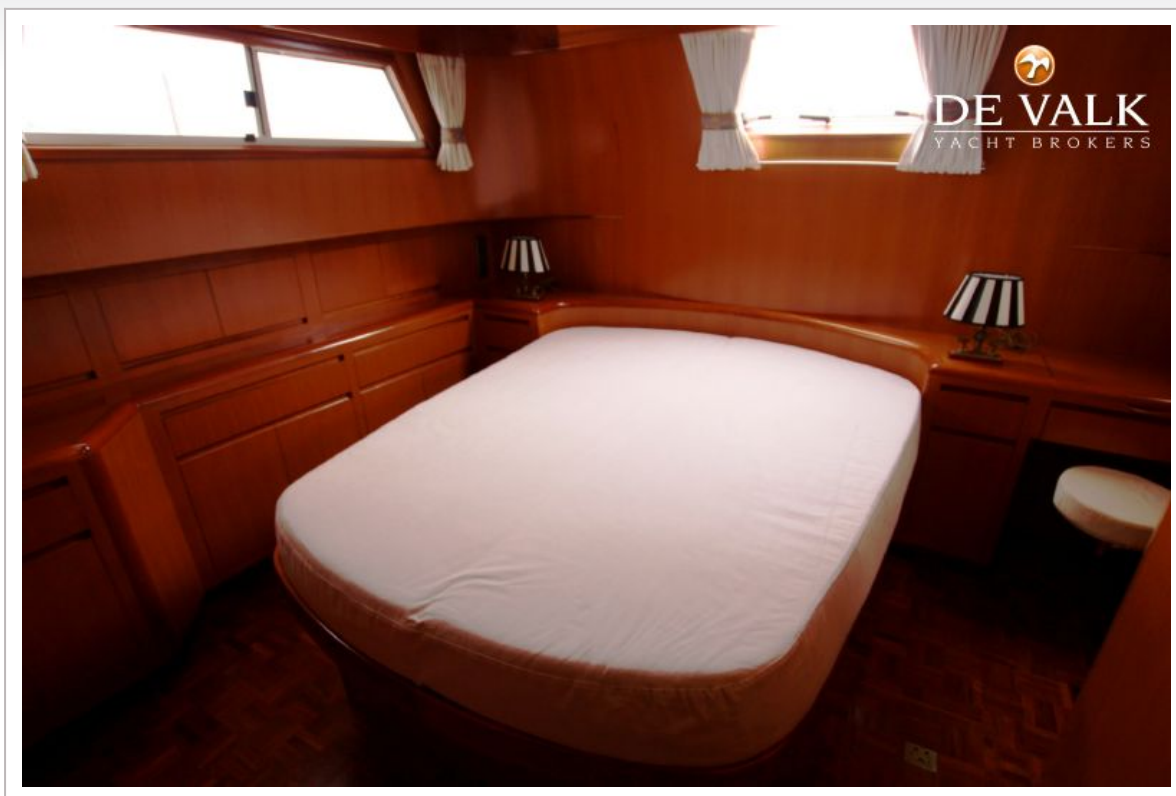
OCEAN ALEXANDER 423 CLASSICO



OCEAN ALEXANDER 423 CLASSICO



OCEAN ALEXANDER 423 CLASSICO



OCEAN ALEXANDER 423 CLASSICO



OCEAN ALEXANDER 423 CLASSICO



OCEAN ALEXANDER 423 CLASSICO



OCEAN ALEXANDER 423 CLASSICO

