



DE VALK  
YACHT BROKERS



## NAVY TENDER



DE VALK  
YACHT BROKERS

# NAVY TENDER

## BROKER'S COMMENTS

Navy Tender 1680 "Wendelaar" built in 1939 for the German Navy, in 2012 the total refit was completed, down to the bare ribs and rebuilt including new skin, systems, engines, superstructure, and since then the "Wendelaar" has been sailing again . . until the current owner had the Navy Tender professionally tackled again in 2022, most important aspects during this major refit have been : guest cabin in front with V-bed , dinette for 4 people, new kitchen including appliances, and in terms of technology huge improvements have been made. "Wendelaar" is ready to sail. Welcome in Sneek !

*Pieter Bosma*

## SPECIFICATIONS

<b>Dimensions</b>	16.80 x 4.25 x 1.30 (m)	<b>Builder</b>	Gebr de Jong Alphen a/d Rijn
<b>Built</b>	2012	<b>Cabins</b>	1
<b>Material</b>	Steel	<b>Berths</b>	2
<b>Engine(s)</b>	2 x Mercedes V6 OM 421 diesel	<b>Hp/Kw</b>	2 x 220.00 (hp), 161.70 (kw)
<b>Asking price</b>	sold (VAT )	<b>Lying</b>	at sales office

## CONTACT

<b>Sales office</b>	De Valk Sneek	<b>Telephone</b>	+31 515 42 80 30
<b>Address</b>	Zwolsmanweg 7 8606 KC Sneek The Netherlands	<b>E-mail</b>	sneek@devalk.nl

## DISCLAIMER

These particulars are given in good faith as supplied but cannot be guaranteed.



# NAVY TENDER

## GENERAL

<b>Model</b>	NAVY TENDER
<b>Type</b>	motor yacht
<b>LOA (m)</b>	16,80
<b>Beam (m)</b>	4,25
<b>Draft (m)</b>	1,30
<b>Air draft (m)</b>	2,70
<b>Headroom (m)</b>	2,00
<b>Year built</b>	2012
<b>Launched</b>	1937
<b>Builder</b>	Gebr de Jong Alphen a/d Rijn
<b>Country</b>	The Netherlands
<b>Displacement (t)</b>	30
<b>Ballast (tonnes)</b>	lead
<b>CE norm</b>	NA
<b>Hull material</b>	steel
<b>Hull colour</b>	blue
<b>Hull shape</b>	round-bilged
<b>Keel type</b>	long keel
<b>Bilge keels</b>	yes
<b>Superstructure material</b>	teak
<b>Deck material</b>	steel 6_8 mm
<b>Deck finish</b>	non-skid paint
<b>Superstructure deck finish</b>	paint
<b>Antifouling (year)</b>	2016
<b>Window frame</b>	aluminium
<b>Window material</b>	double glazing
<b>Deckhatch</b>	yes
<b>Portholes</b>	brass
<b>Insulation</b>	rockwool
<b>Fuel tank (litre)</b>	steel 1600



# NAVY TENDER

<b>Freshwater tank (litre)</b>	stainless steel 1100
<b>Blackwater tank (litre)</b>	stainless steel 400
<b>Blackwater tank extraction</b>	deck extraction + pump
<b>Wheel steering</b>	hydraulic
<b>Inside helm position</b>	yes

## ACCOMMODATION

<b>Cabins</b>	1
<b>Berths</b>	2
<b>Interior</b>	teak
<b>Floor</b>	carpet
<b>Deck saloon</b>	yes
<b>Headroom saloon (m)</b>	2,14
<b>Sliding roof</b>	yes
<b>Heating</b>	Kabola HR400 )2011
<b>Galley</b>	yes
<b>Countertop</b>	Duropal
<b>Sink</b>	stainless steel
<b>Cooker</b>	electric Siemens 4 pits
<b>Microwave/oven combi</b>	Siemens Studioline
<b>Fridge</b>	Miele
<b>Freezer</b>	Zanussi
<b>Hot water system</b>	yes
<b>Water pressure system</b>	electrical
<b>Dishwasher</b>	Siemens Studioline
<b>Owners cabin</b>	double bed
<b>Bed length (m)</b>	2,00
<b>Wardrobe</b>	hanging and drawers
<b>Toilet</b>	separate
<b>Toilet system</b>	electric
<b>Wash basin</b>	in the bathroom



# NAVY TENDER

Shower	separate
Washing machine/dryer combi	Miele

## MACHINERY

No of engines	2
Make	Mercedes V6
Type	OM 421
HP	220
kW	161,70
Fuel	diesel
Year installed	2011
Maximum speed (kn)	10,5
Cruising speed (kn)	9
Consumption (l/hr)	5/6 l./h. by 9 knots
Engine hours	1700
Engine cooling system	hopper cooling Blokland
Drive	shaft
Engine controls	yes
Gearbox	hydraulic Twin Disc
Bowthruster	hydraulic
Gearbox	hydraulic
Exhaust	watercooled
Thrust bearing	yes
Propeller type	fixed
Propeller blades	5
Propeller shaft material	stainless steel
Shaft lubrication	grease
Electrical installation	12, 24 , 240V
Generator	silent separator Whispergen M-SQ10 (2011)
Running hours generator	1125
Generator 2	silent separator Yanmar 15 Kva (2015)



# NAVY TENDER

Running hours generator 2	100
Batteries	yes
Start battery	2x 220 Ah
Service battery	4x 220 Ah
Generator battery	2x 50 Ah
Battery monitor	Victron
Battery charger	Victron Blue Power 12/17
Inverter	Victron Orion 24/12-25
Battery charger/inverter	Victron Multiplus 24/3000/70
Shorepower	yes
Insulation transformer	yes

## NAVIGATION

Electric compass	Raymarine
Depth sounder/log	Raymarine
Log	Raymarine
VHF	Sailor RT2048
Autopilot	Raymarine
Rudder angle indicator	Raymarine
GPS	Raymarine
Plotter	Raymarine E Hybrid
Navigation lights	yes
Searchlight	yes
Extra info	all navigation equipment has been placed in 2014/2015

## EQUIPMENT

Cockpit cushions	yes
Bathing platform	yes
Boarding ladder	yes
Anchor	yes
Windlass	manual



# NAVY TENDER

Deck wash	yes
Sea railing	steel
Wiper	yes
Clearview window	yes
Mooring lines	yes
TV	B&O
TV receiver	Digitenne
Radio-cd player	B&O
Fire extinguisher	3x
Extra info	cover for sterringhouse



# NAVY TENDER





# NAVY TENDER



# NAVY TENDER



# NAVY TENDER



# NAVY TENDER



# NAVY TENDER



# NAVY TENDER



# NAVY TENDER



# NAVY TENDER





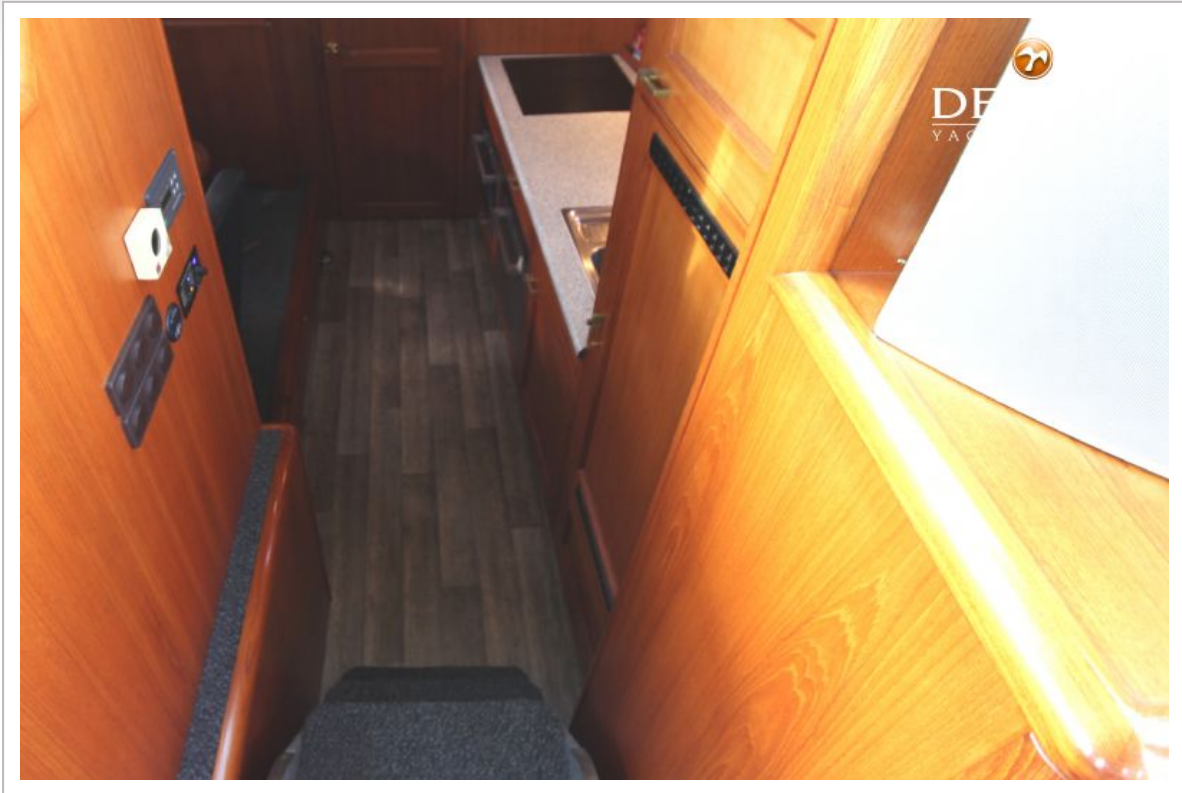
# NAVY TENDER



# NAVY TENDER



# NAVY TENDER



# NAVY TENDER



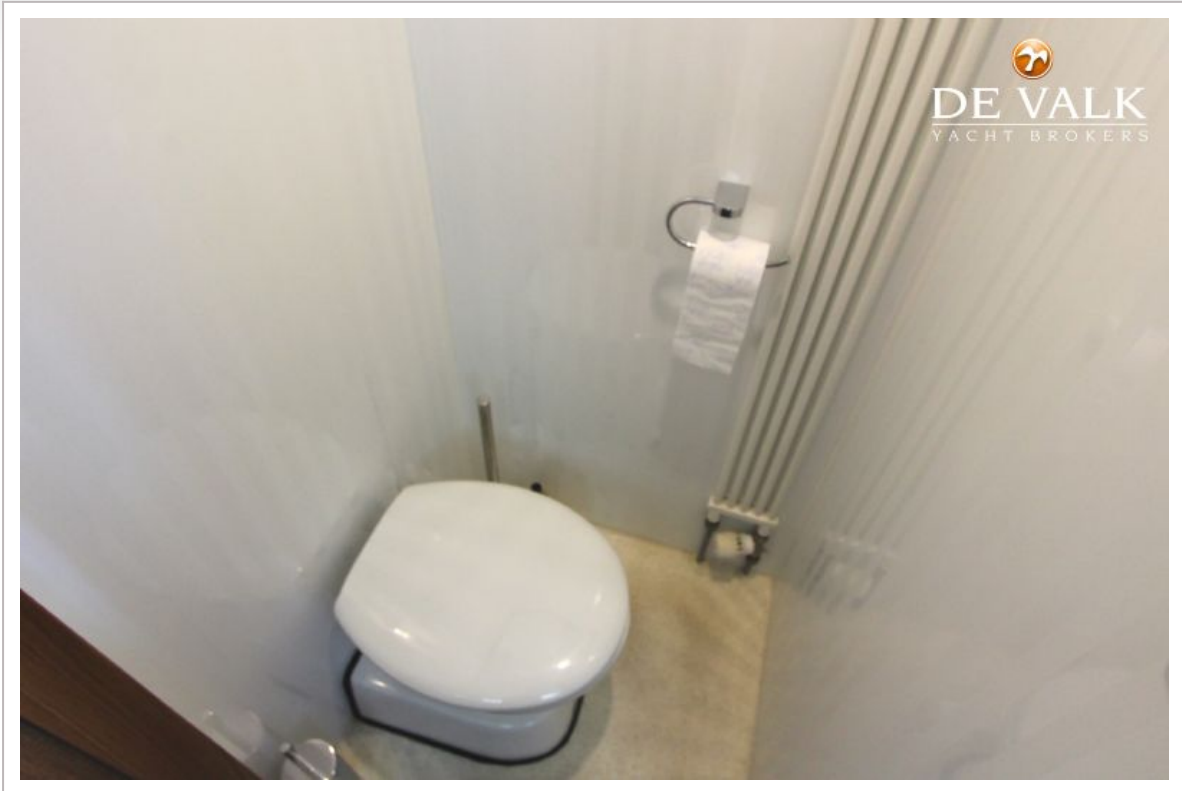
# NAVY TENDER



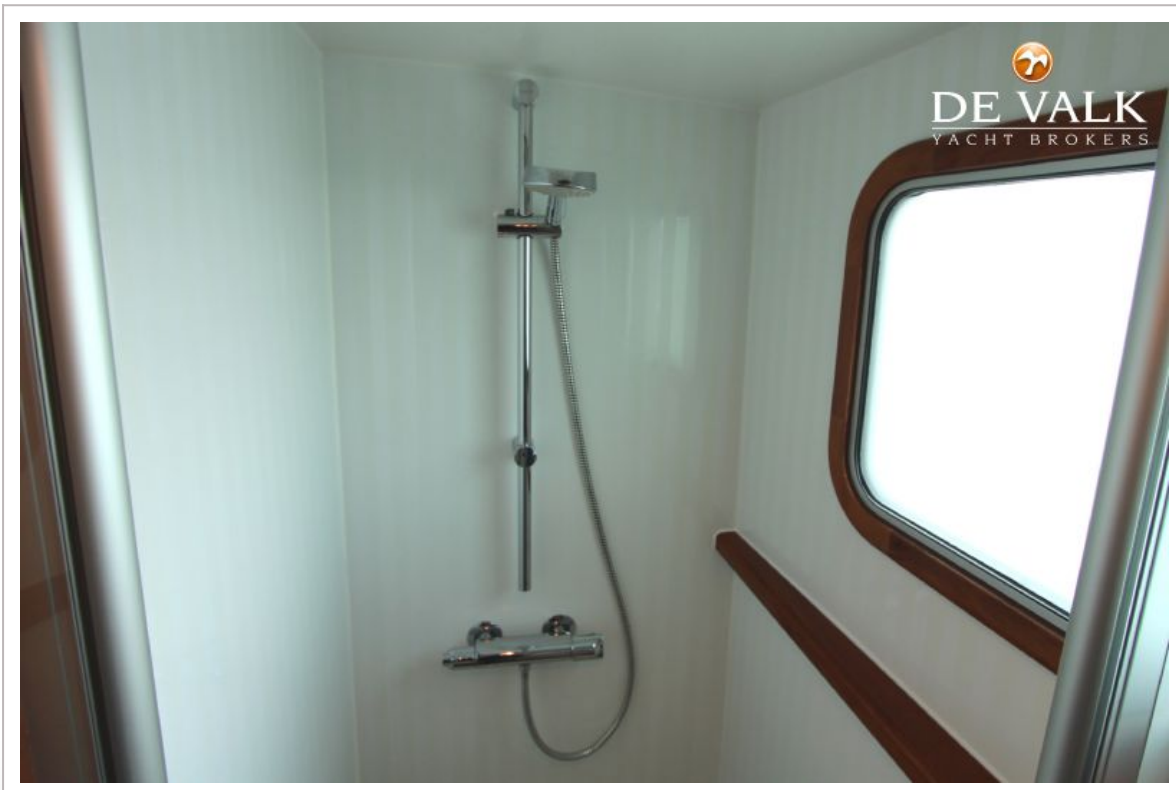
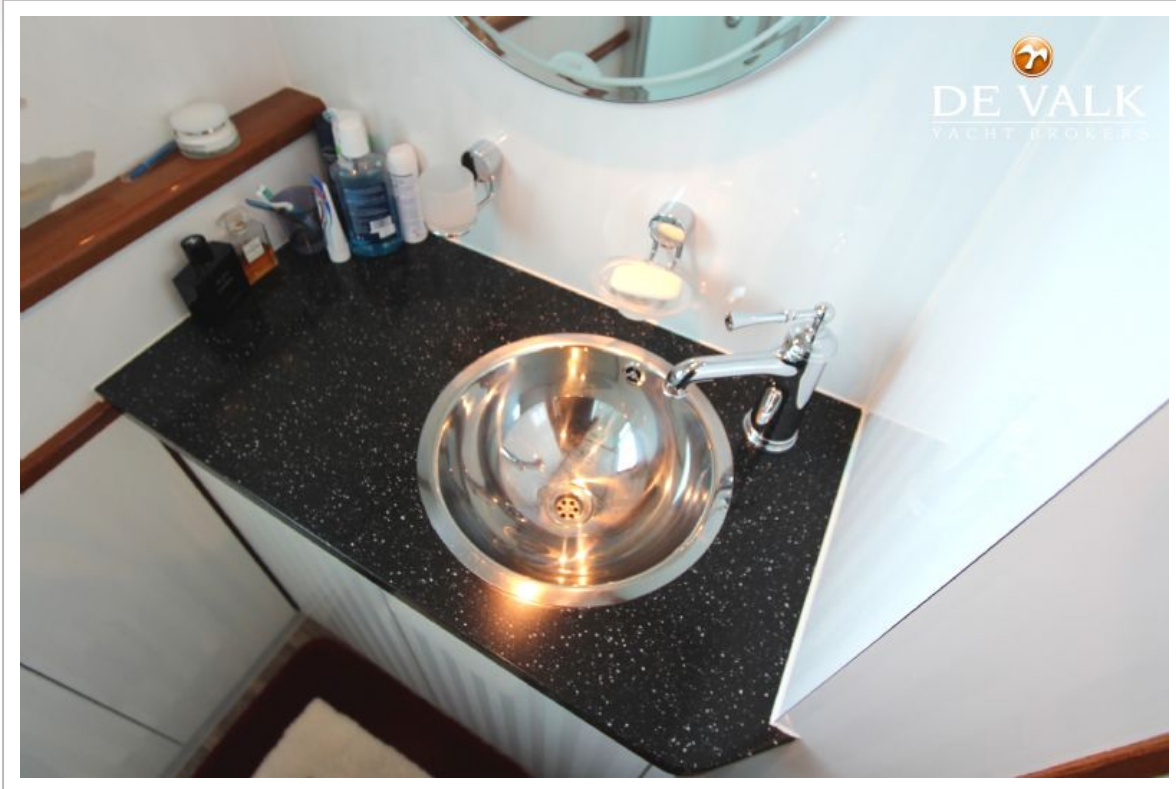
# NAVY TENDER



# NAVY TENDER

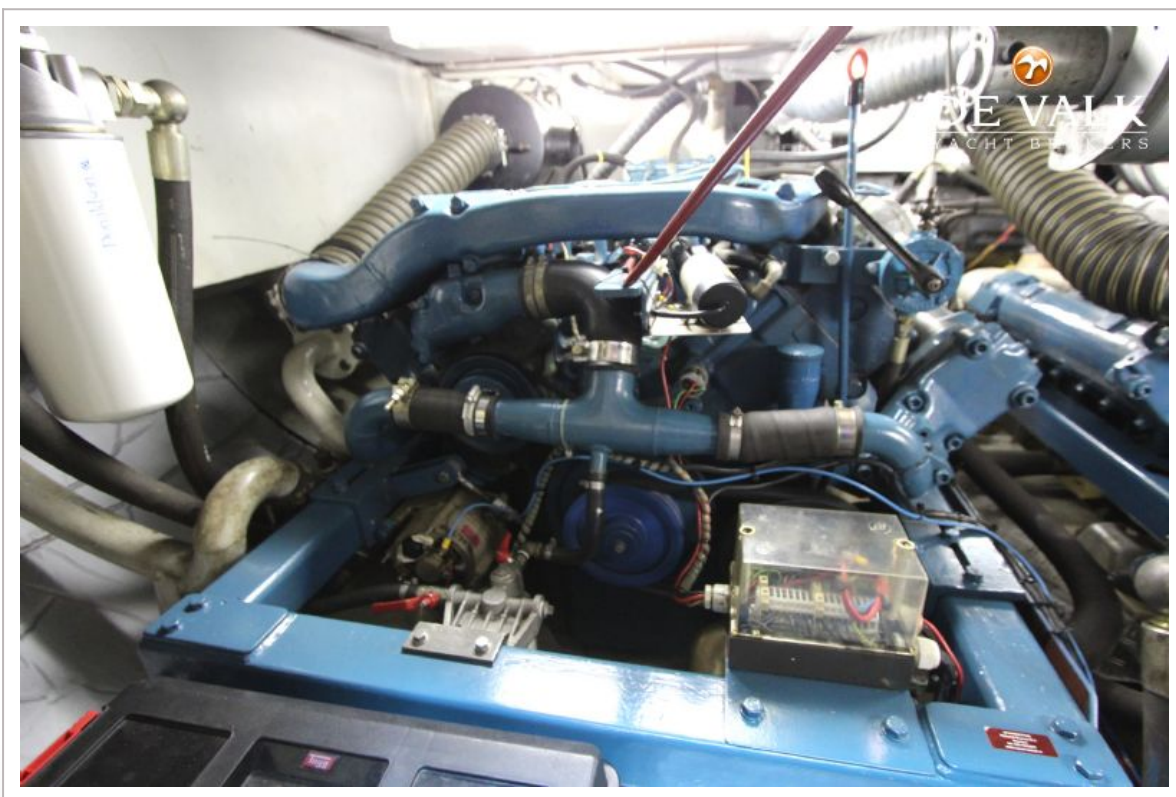
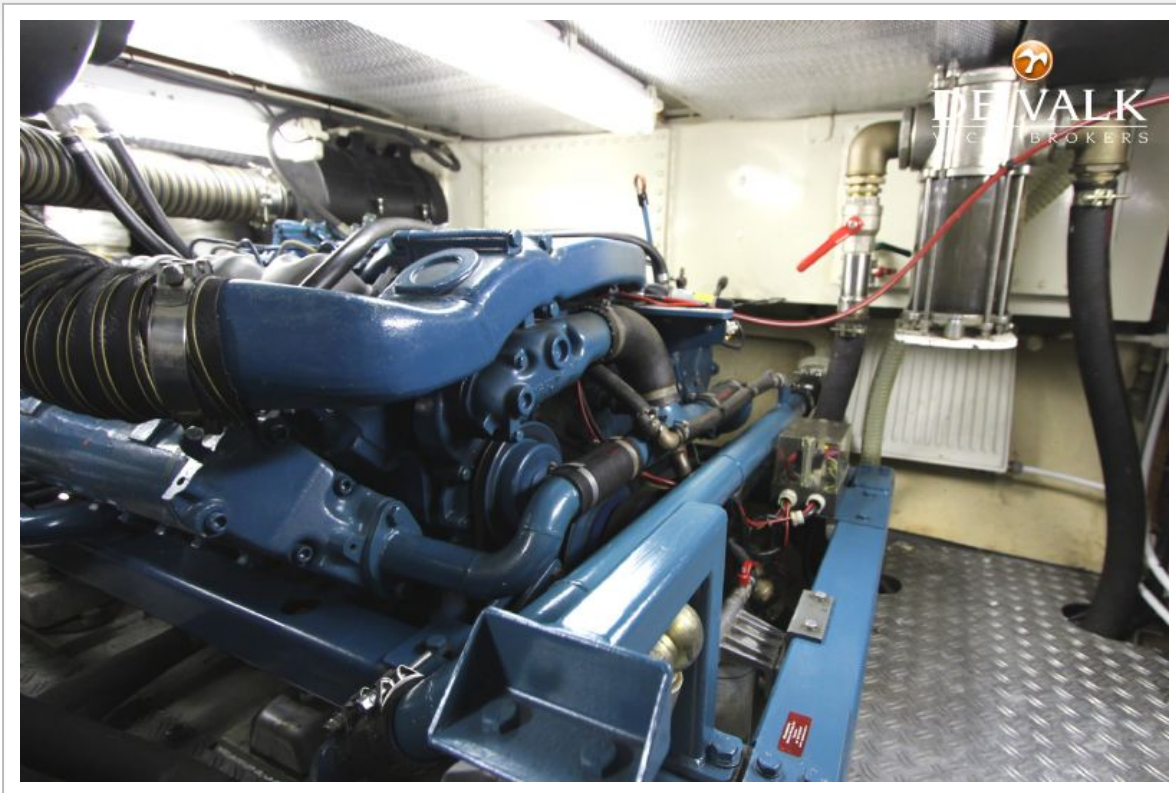


# NAVY TENDER





# NAVY TENDER



# NAVY TENDER

