



NOORDZEEKOTTER 1200

BROKER'S COMMENTS

Noordzeekotter "Dwelmer" is built by the highly experienced yard Brandsma Jachten in Sneek. This Noordzeekotter is a very cozy cutter with one level floors, an open cockpit and Mahogany interior. She is suitable for the coastal- and inland waterways and the French canals (CE-B) and for a longer stay on board. This Noordzeekotter is equipped with a 114 hp Vetus-Deutz diesel engine, hydraulic bow- and sternthruster and mast lowering system, double glazing, Kabola central heating, generator, two cabins and a lot of storage space. In a few words: a yacht to sail away immediately.

Peter Spruyt

SPECIFICATIONS

Dimensions	12.18 x 4.19 x 1,05 / 1.10 (m)	Builder	Brandsma Jachten Sneek
Built	2008	Cabins	1
Material	Steel	Berths	4
Engine(s)	1 x Vetus Deutz DT44 diesel	Hp/Kw	114.00 (hp), 83.79 (kw)
Asking price	sold (VAT)	Lying	at sales office

CONTACT

Sales office	De Valk Sneek	Telephone	+31 (0)515 42 80 30
Address	Zwolsmanweg 7 8606 KC Sneek NL	E-mail	sneek@devalk.nl

DISCLAIMER

These particulars are given in good faith as supplied but cannot be guaranteed.



GENERAL

Model	NOORDZEEKOTTER 1200
Type	motor yacht
LOA (m)	12,18
LWL (m)	10,99
Beam (m)	4,19
Draft (m)	1,10
Draft min (m)	1,05
Air draft (m)	2,45
Headroom (m)	1,97
Year built	2008
Builder	Brandsma Jachten Sneek
Country	The Netherlands
Designer	Vripack Sneek
Displacement (t)	16
CE norm	B
Hull material	steel
Hull colour	grey
Hull shape	multi hard chine
Keel type	box keel
Superstructure material	steel
Rubbing strake	stainless steel
Deck material	steel
Deck finish	cork
Superstructure deck finish	non-skid paint
Cockpit deck finish	paint
Antifouling (year)	2016
Window frame	aluminium
Window material	double glazing
Portholes	aluminium
Insulation	rockwool



Mast can be lowered	hydraulic
Fuel tank (litre)	730 l.
Level indicator (fuel tank)	yes
Freshwater tank (litre)	575 l.
Level indicator (freshwater)	yes
Blackwater tank (litre)	100 l.
Level indicator (blackwater)	yes
Greywater tank (litre)	150 l.
Level indicator (greywater)	yes
Wheel steering	hydraulic
Outside helm position	with remote control
Emergency tiller	yes
More info on paintwork	hull repainted in 2016

ACCOMMODATION

Cabins	1
Berths	4
Interior	mahogany
Floor	carpet
Doghouse	yes
Saloon	2.00 m.
Sliding roof	electric Webasto
Heating	central heating Kabola
Opening door to aft deck	yes
Galley	yes
Countertop	plastic
Sink	stainless steel
Cooker	diesel 2x Webasto ceramic
Extractor	Dometic
Fridge	1x Waeco 50 l., 1x Weaco 110 l.
Freezer	yes



Hot water system	on central heating
Water pressure system	electrical
Owners cabin	v-bed
Wardrobe	hanging and drawers
Toilet	shared
Toilet system	electric Tecma
Wash basin	at the toilet
Shower	shared
Guest cabin 1	double bed

MACHINERY

No of engines	1
Make	Vetus Deutz
Type	DT44
HP	114,00
kW	83,79
Fuel	diesel
Year installed	2007
Engine hours	896
Drive	shaft
Engine controls	electrical
Gearbox	hydraulic
Bowthruster	hydraulic + remote control
Sternthruster	hydraulic + remote control
Propeller type	fixed
Propeller blades	4-bladed
Propeller shaft material	stainless steel
Shaft lubrication	water
Manual bilge pump	yes
Electric bilge pump	yes
Electrical installation	12/220 Volt



Generator	wet exhaust Mastervolt 5,5 kW
Start battery	Vetus 165 Amp
Service battery	6x 2,5 Volt 1000 Amp
Battery charger/inverter	2500 Watt
Diode battery combiners	yes
Shorepower	with cable

NAVIGATION

Depth sounder	VDO
Log	VDO
VHF	Raymarine
Autopilot	Raymarine ST 6002 + remote control
Rudder angle indicator	yes
Plotter	Geonav/Navionics 7 Wide

EQUIPMENT

Cockpit cover	yes
Deck shower	yes
Anchor	Pool
Anchor chain	yes
Windlass	hydraulic Remote control
Sea railing	stainless steel
Railing side opening gates	3x
Wiper	3x
Horn	electric
Fenders	yes
Mooring lines	yes
TV	Samsung
Radio-cd player	Pioneer
Speakers in salon	yes
Fire extinguisher	yes



RIGGING

Mast lowering system

hydraulic



NOORDZEEKOTTER 1200



NOORDZEEKOTTER 1200



NOORDZEEKOTTER 1200



NOORDZEEKOTTER 1200



NOORDZEEKOTTER 1200



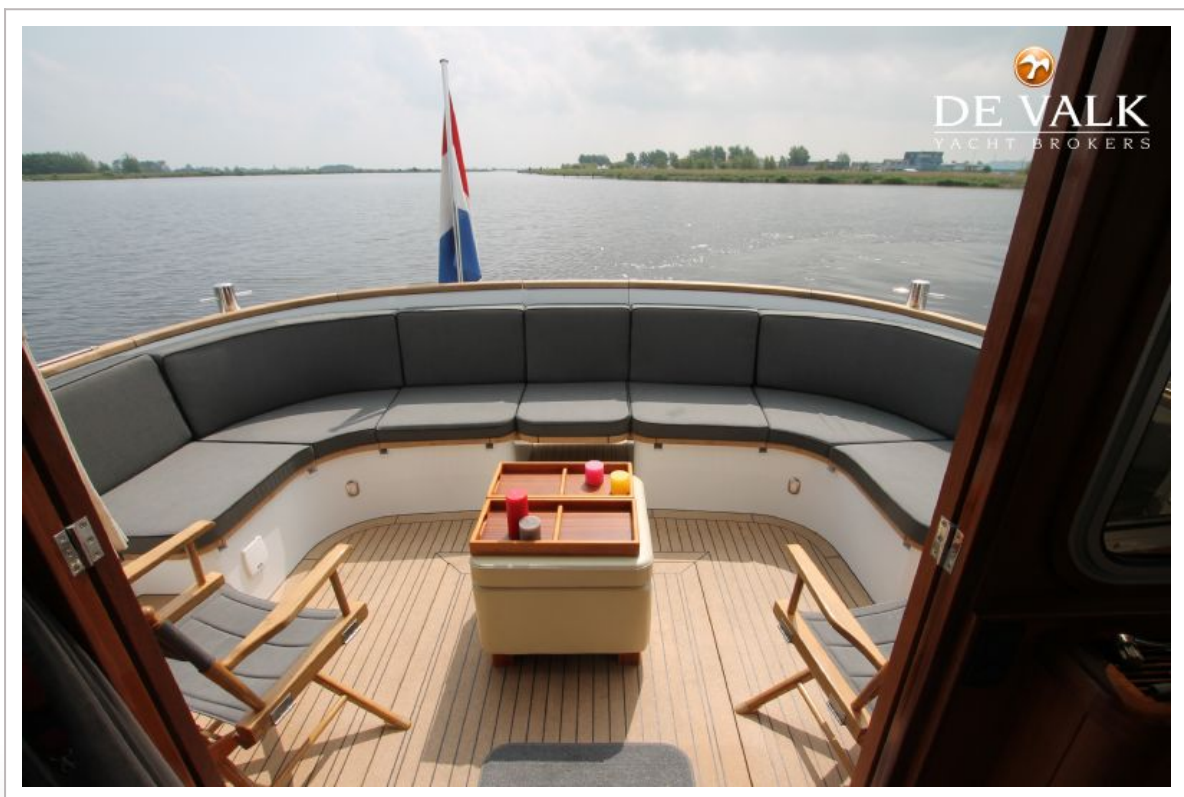
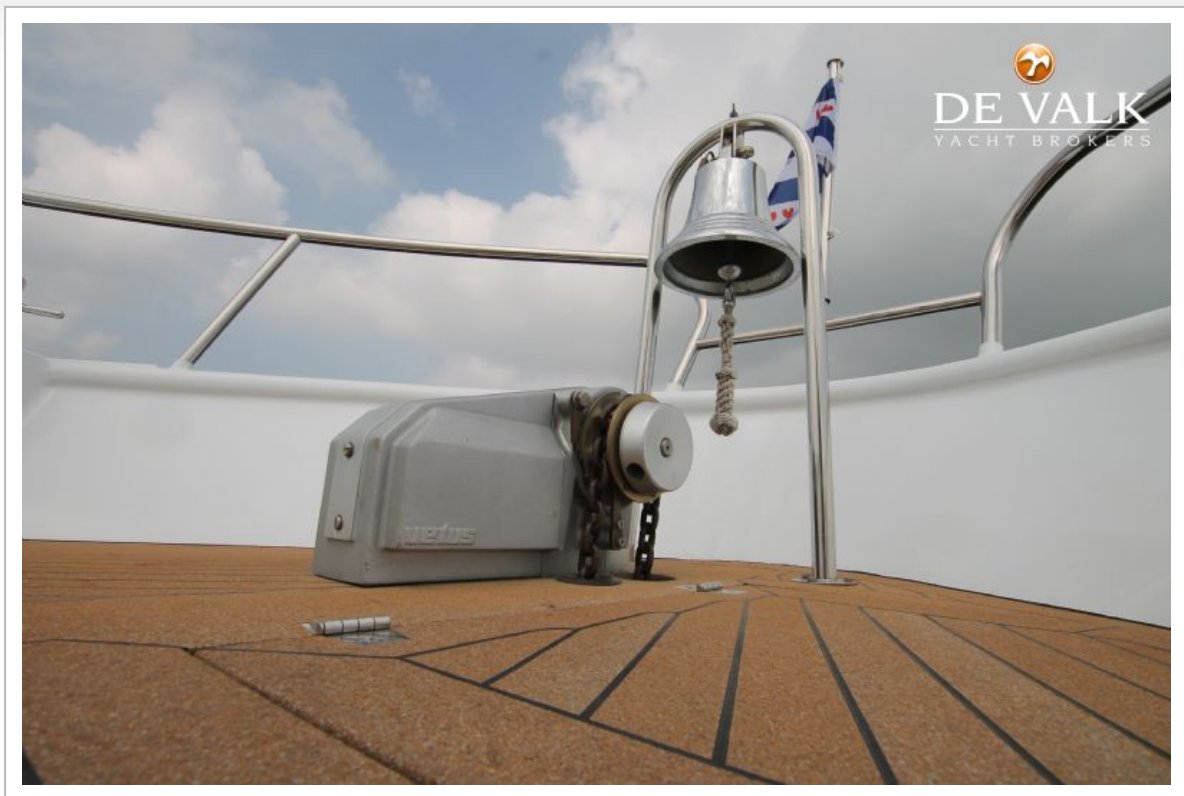
NOORDZEEKOTTER 1200



NOORDZEEKOTTER 1200



NOORDZEEKOTTER 1200



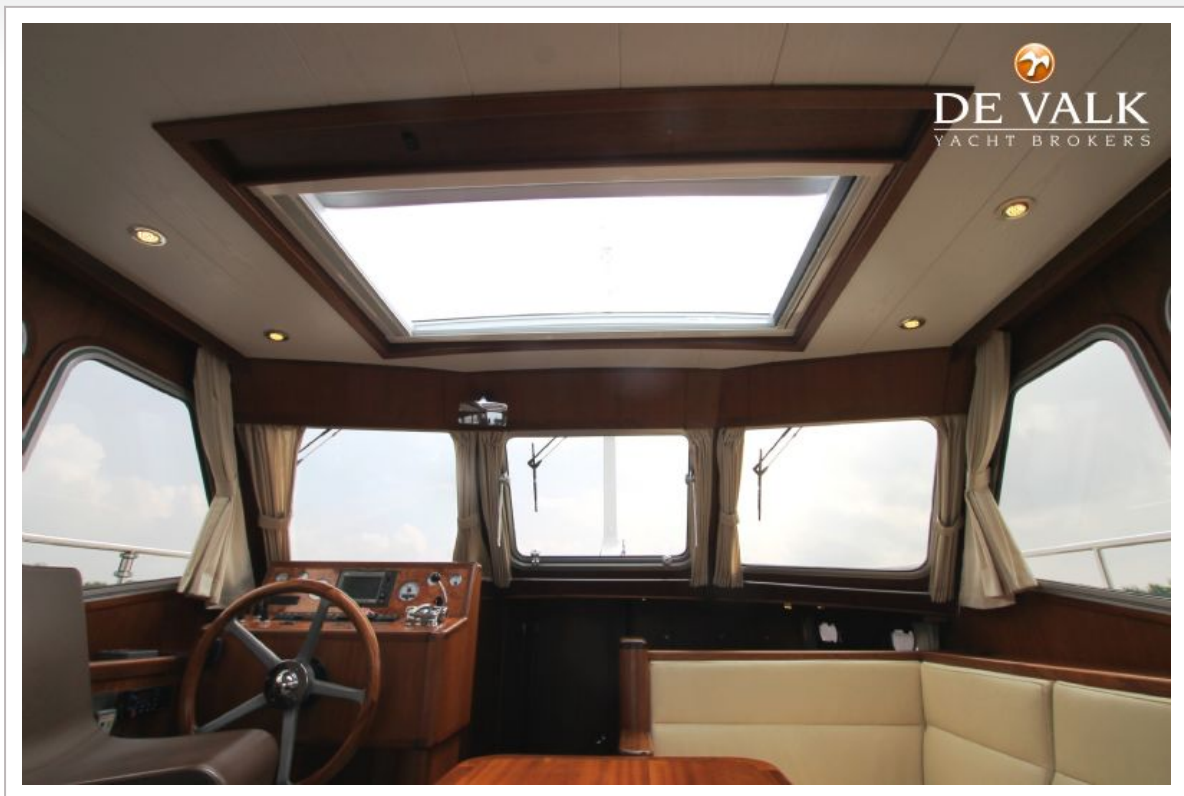
NOORDZEEKOTTER 1200



NOORDZEEKOTTER 1200



NOORDZEEKOTTER 1200



NOORDZEEKOTTER 1200



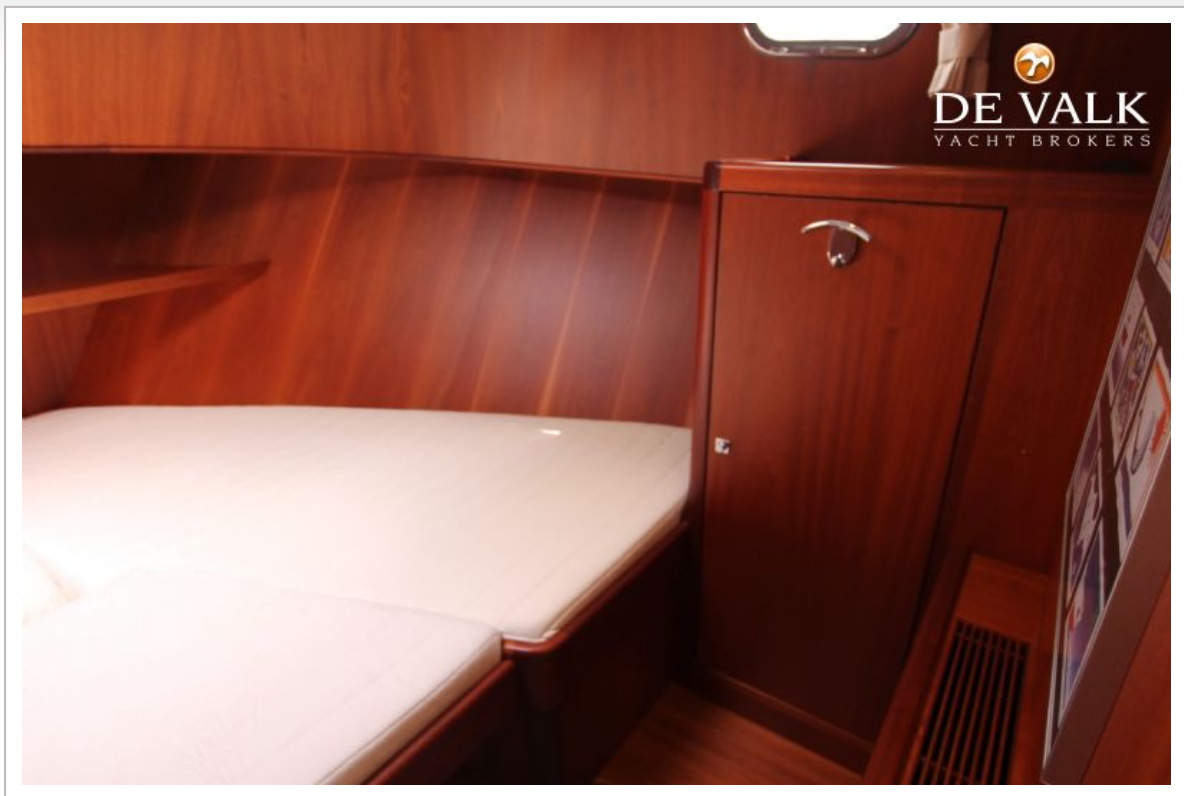
NOORDZEEKOTTER 1200



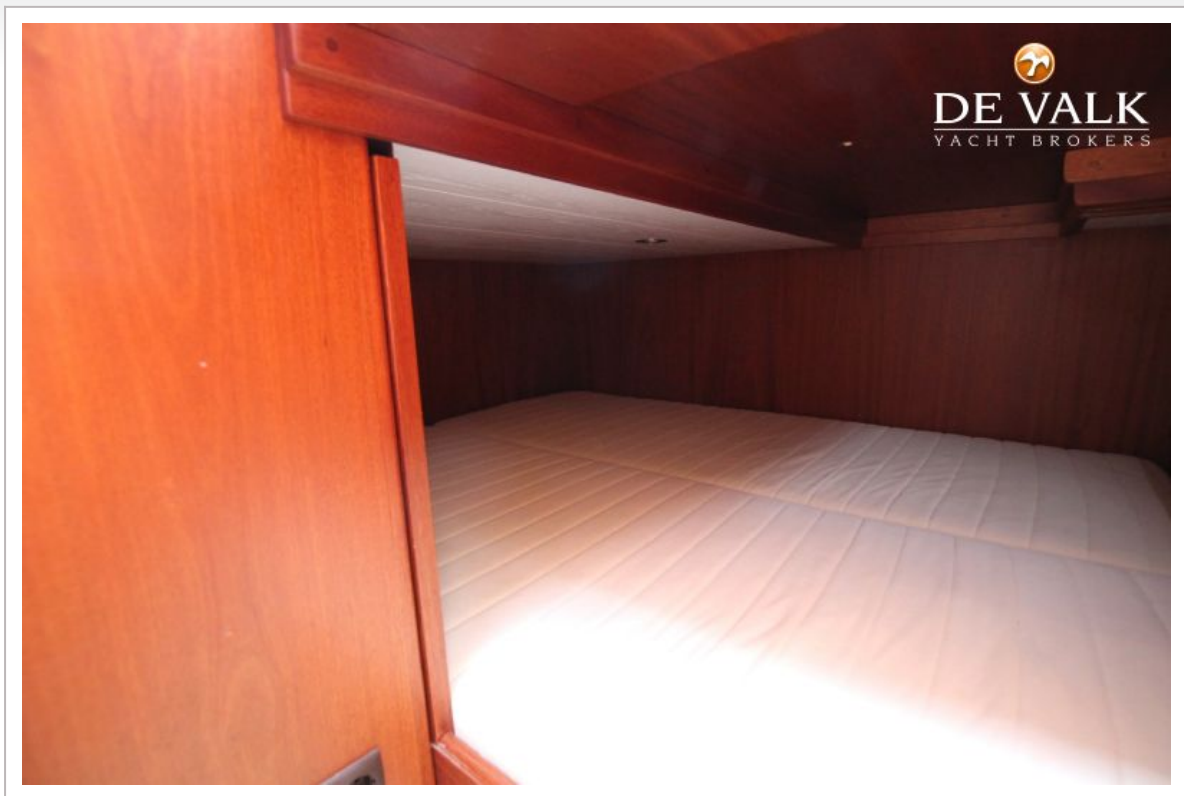
NOORDZEEKOTTER 1200



NOORDZEEKOTTER 1200



NOORDZEEKOTTER 1200



NOORDZEEKOTTER 1200

