



DE VALK
YACHT BROKERS



NOORDKAPER 47



DE VALK
YACHT BROKERS

BROKER'S COMMENTS

This lovely Noordkaper 47 with her classic looks is a real eyecatcher, designed by Martin Bekebrede. She is specially designed for shallow waters (draft 0,90 meters), but with her lowered keel (2,40 m.) she's a very seaworthy ship. This Noordkaper 47 is built practical, with good materials and good insulation. Due to her in-furling mast, furling jib, and 2 electric winches this yacht can be easily sailed single handed. It is a very strong, real world cruiser and ready to go on any trip. She offers style and comfort. Her extended deckhouse and spacious saloon makes her ideal for living aboard.

Tjerk Bouma

SPECIFICATIONS

Dimensions	15.45 x 4.50 x 0,90 / 2.40 (m)	Builder	Dubois - Groningen
Built	2005	Cabins	3
Material	Steel	Berths	6
Engine(s)	1 x sole SN110 diesel	Hp/Kw	103.00 (hp), 75.71 (kw)
Asking price	sold (VAT)	Lying	contact Hindeloopen

CONTACT

Sales office	De Valk Hindeloopen B.V.	Telephone	+31 514 52 40 00
Address	Oosterstrand 1 8713 JS Hindeloopen NL	E-mail	hindeloopen@devalk.nl

DISCLAIMER

These particulars are given in good faith as supplied but cannot be guaranteed.



GENERAL

Model	NOORDKAPER 47
Type	sailing yacht
LOA (m)	15,45
Beam (m)	4,50
Draft (m)	2,40
Draft min (m)	0,90
Air draft (m)	21,00
Headroom (m)	1,94
Year built	2005
Launched	2005
Builder	Dubois - Groningen
Country	The Netherlands
Designer	Martin Bekebrede
Displacement (t)	21,0
Ballast (tonnes)	4,5
CE norm	NA
Hull material	steel
Hull colour	blue 09-2017
Hull thickness (mm)	Bottom 20 mm, till just above the waterline 10 mm, further 5 mm.
Hull shape	multi hard chine
Keel type	centreboard Retractable
Superstructure material	composite Finished with 10 mm thick Mahogany and 60 mm insulation foam.
Superstructure (mm)	In total about 80 mm. Composite via vacuum method.
Rubbing strake	steel
Deck material	steel
Deck finish	non-skid paint
Superstructure deck finish	paint 2 components expoy
Cockpit deck finish	teak
Antifouling (year)	09-2017



Window frame	wood
Window material	double glazing
Insulation	foam plates Hull: 70 mm
Fuel tank (litre)	steel 2x 350 L.
Fuel tank 2 (litre)	steel 2x 350 L.
Level indicator (fuel tank)	yes
Freshwater tank (litre)	stainless steel 2x 400 L.
Level indicator (freshwater)	yes
Blackwater tank (litre)	polyethylene 2x 50 L.
Level indicator (blackwater)	yes
Blackwater tank extraction	pump
Greywater tank (litre)	polyethylene 50 L.
Wheel steering	hydraulic
Inside helm position	On autopilot
More info on paintwork	09-2017 - Hull and superstructure painted.
Extra info	The deckhouse is originally extended and aproved by Martin Bekebrede.
Extra info	Portholes made from brass

ACCOMMODATION

Cabins	3
Berths	6
Interior	mahogany
Floor	teak and holly
Open cockpit	With 2 big cockpit lockers.
Pilot house/deck saloon	yes
Saloon	yes
Headroom saloon (m)	1,94 meters
Heating	central hot water Kabola HR 400-Combi
Heating 2	stove diesel Kabola 'Old English'
Aft Cabin	yes



Dinette	yes
Dinette to convert into berth	yes
Galley	yes
Countertop	Duropal
Sink	stainless steel
Cooker	calor gas 4 burner with an electric gas valve - 2017 new gas inspection
Microwave/oven combi	Electric
Fridge	yes
Hot water system	on central heating
Water pressure system	Hydrofoor system.
Owners cabin	double bed Forward cabin
Bed length (m)	2,10 x 1,60 (LxB)
Wardrobe	hanging and shelves
Toilet	en suite
Toilet system	electric
Wash basin	yes
Shower	en suite Separate and
Guest cabin 1	double bed After cabin
Bed length (m)	2,10 x 1,55 (LxB)
Wardrobe	hanging and shelves
Toilet	en suite
Toilet system	electric
Wash basin	in the cabin
Guest cabin 2	double bed Middle cabin
Bed length (m)	2,16 x 1,50 (LxB)
Wardrobe	hanging and shelves
Wash basin	in the cabin
Extra info	Berths in total 10 (3 double berths = 6 and 2 berths in the dinette and 2 berths in the saloon = 4)

MACHINERY



No of engines	1
Make	Sole
Type	SN110
HP	103,00
kW	75,71
Fuel	diesel
Year installed	2004
Maximum speed (kn)	5,5 - 8
Cruising speed (kn)	5.5
Engine hours	2.814
Engine cooling system	freshwater heat exchanger
Drive	shaft
Shaft seal	Volvo
Engine controls	bowden cable
Gearbox	hydraulic
Bowthruster	electric Vetus
Exhaust	watercooled
Propeller type	fixed
Propeller blades	3
Propeller shaft material	stainless steel
Shaft lubrication	water
Manual bilge pump	yes
Electric bilge pump	yes
Electrical installation	12 / 220 V
Generator	Replaced by solar panels. All connections still available.
Start battery	1x 75 Ah
Service battery	2x 225 Ah
Bowthruster battery	And windlass - 4x 50 Ah - Mastervolt charger
Battery monitor	Phoenix Multi Control
Battery charger/inverter	Victron Phoenix 12v / 1600 / 70
Solar panel	+ Victron BlueSolar - 3 panels.
Shorepower	with cable



Extra info

The drive comes with a shaft and a homokinetic coupling and pressure bearing.

NAVIGATION

Depth sounder

Data from: Raymarine ST60 Tridata

Log

Data from: Raymarine ST60 Tridata

VHF

Raymarine Ray 60 - 2017

Autopilot

Raymarine P70 display - Evolution EV-400 sail - 2017

Radar

Raymarine

Plotter/GPS

Raymarine aSerie multifunctiondisplay - 2017

Radar/plotter

Raymarine A65

Radar/GPS/plotter

Raymarine C80 (inside)

AIS transponder

Raymarine AIS650 klasse B transponder + AIS100 VHF splitter

Navigation lights

yes

Extra info

yes

EQUIPMENT

Boarding ladder

stainless steel Loose

Anchor

Bruce

Anchor chain

40 meters

Windlass

electrical Lofrans Falkon 1500W 24V

Deck wash

yes

Sea railing

stainless steel

Pushpit

yes

Fenders

yes

Mooring lines

yes

Fire extinguisher

yes

RIGGING

Rigging

sloop-cutter 2005

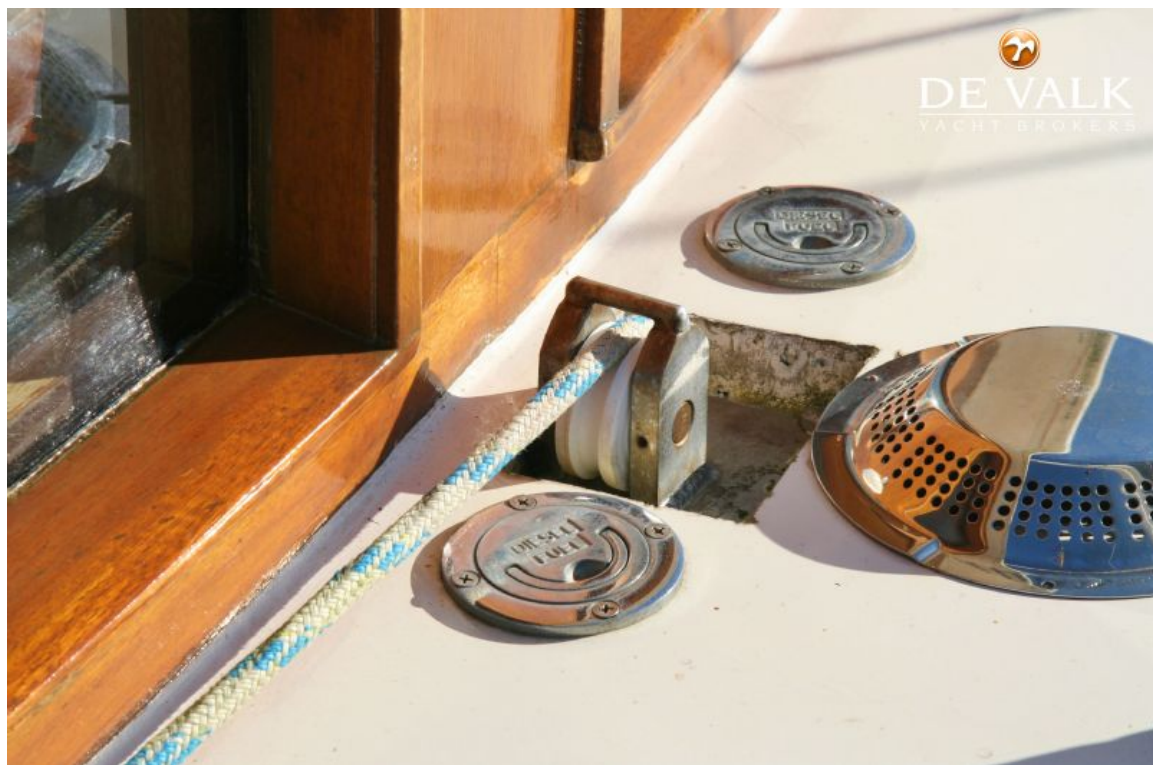


Standing rigging	wire 2005
Brand mast	Proctor
Material mast	aluminium
Spreaders	2 pair
Mainsail	2005 - 48 m2
Fully battened mainsail	Vertical
Stoway mast	yes
Cutterstay	yes
Jib	2005, with furlex - 25 m2
Gennaker	2008 - 150 m2
Yankee	2005, with furlex - 58 m2
Reefing System	main in-mast furling
Boomvang	mechanical
Primary sheet winch	2x Antal W60
Genoa sheetwinches	2x Antal W66 electric
Winchcovers	yes
Extra info	Single handed sailing!



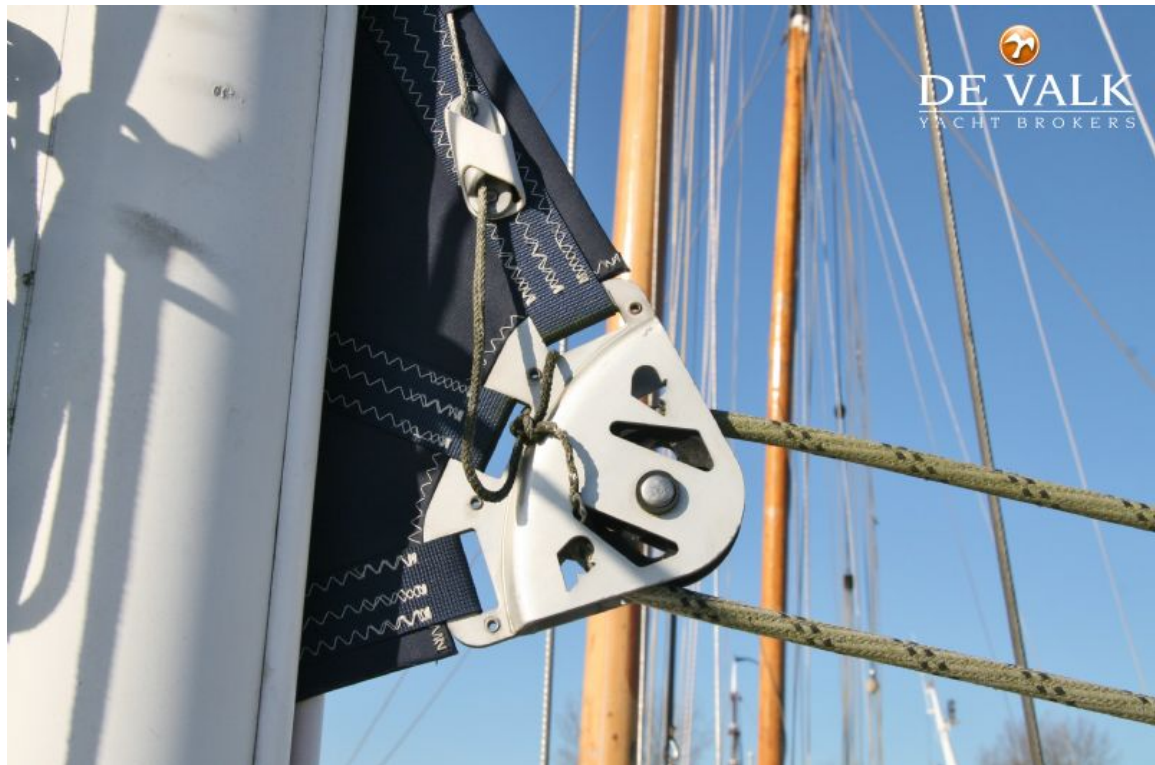
NOORDKAPER 47





NOORDKAPER 47









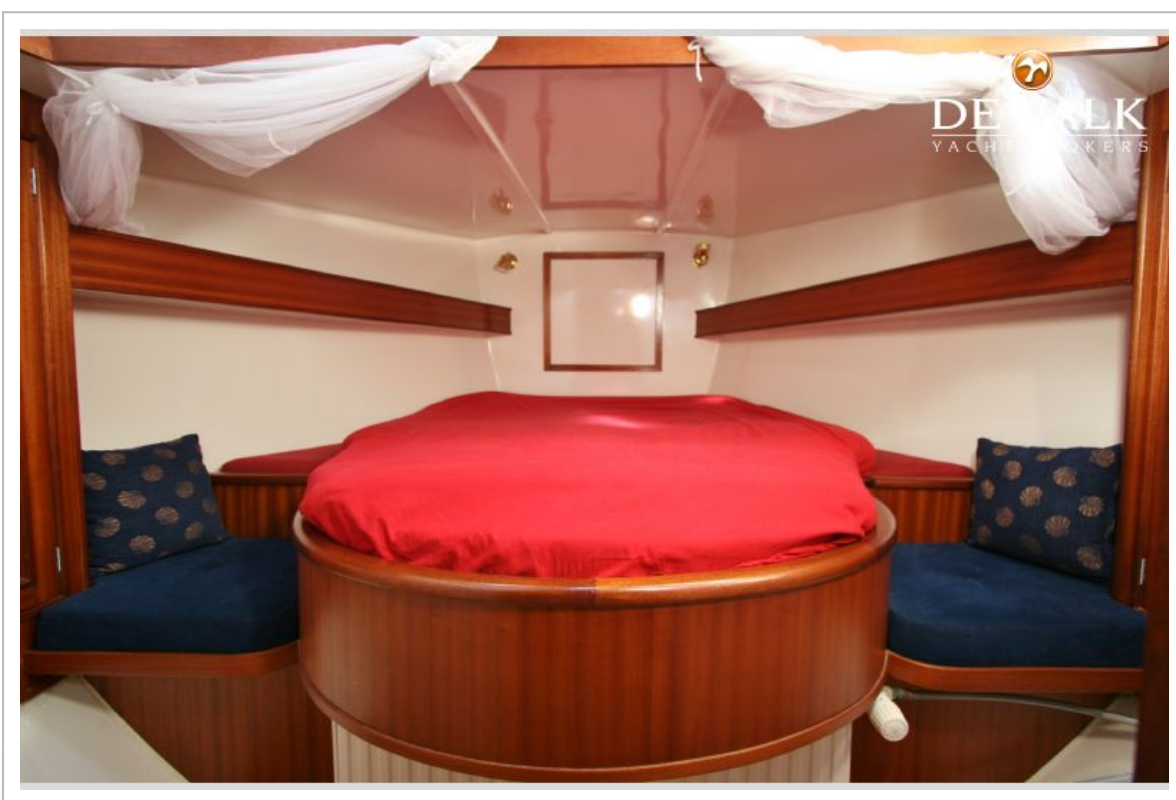
NOORDKAPER 47

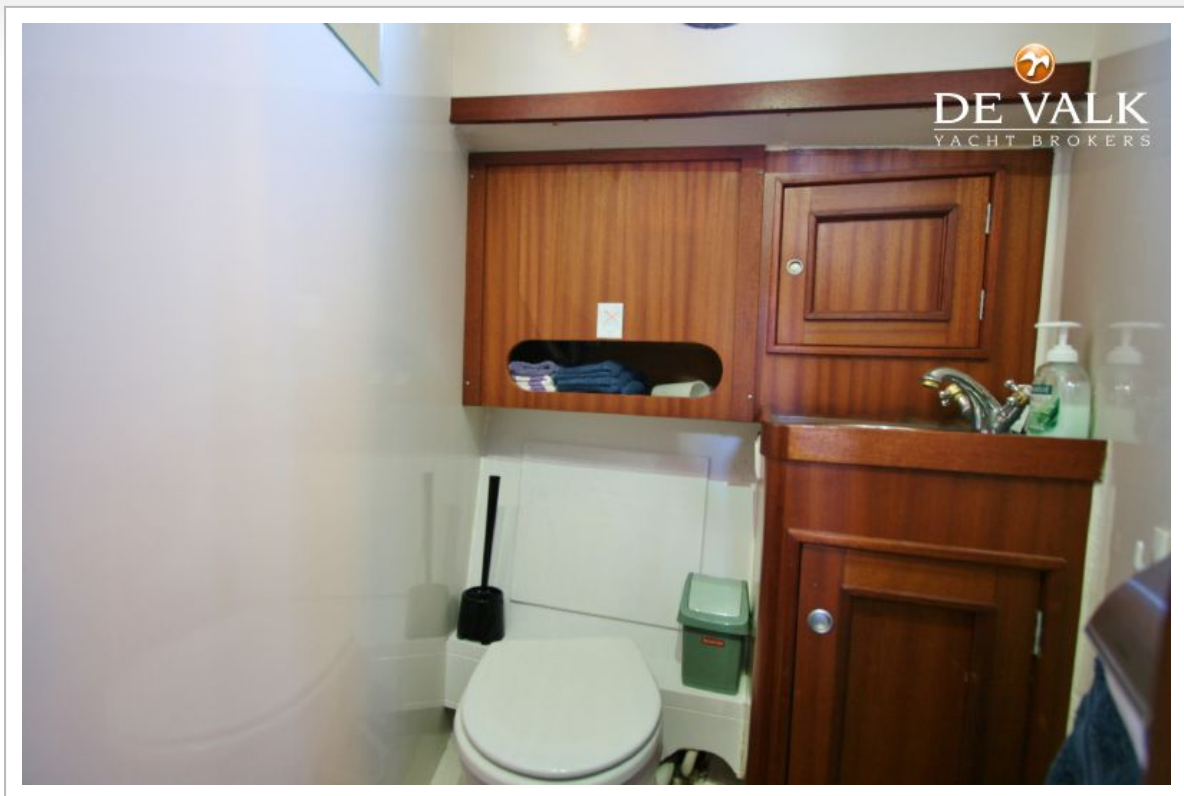






NOORDKAPER 47









NOORDKAPER 47

