



VRIPACK SURVEY



VRIPACK SURVEY

BROKER'S COMMENTS

Vripack Survey "Orc - M": the words beautiful design, strong built and live aboard come into mind when you see her. Designed by Vripack, build by Heysmans in Stavoren, the Netherlands. She is equipped with central heating, double glazed windows and an interior that is built to the specific design and with the personal touch of the current second owner. This Vripack Survey can be inspected in our sales marina in Sneek. You are very welcome!

Pieter Bosma

SPECIFICATIONS

Dimensions	14.95 x 4.80 x 1.45 (m)	Builder	Heijsmans Scheepsbouw/ owner
Built	2000	Cabins	2
Material	Steel	Berths	4
Engine(s)	1 x Perkins M185SC diesel	Hp/Kw	185.00 (hp), 135.00 (kw)
Asking price	sold (VAT)	Lying	at sales office

CONTACT

Sales office	De Valk Sneek	Telephone	+31 (0)515 42 80 30
Address	Zwolsmanweg 7 8606 KC Sneek NL	E-mail	sneek@devalk.nl

DISCLAIMER

These particulars are given in good faith as supplied but cannot be guaranteed.



GENERAL

Model	VRIPACK SURVEY
Type	motor yacht
LOA (m)	14,95
LWL (m)	13,65
Beam (m)	4,80
Draft (m)	1,45
Air draft min (m)	3,50
Headroom (m)	2,00
Year built	2000
Builder	Heijsmans Scheepsbouw/ owner
Country	The Netherlands
Designer	Vripack
Displacement (t)	28,5
CE norm	NA
Hull material	steel
Hull colour	antracite gray
Hull thickness (mm)	5 mm
Hull shape	multi hard chine
Keel type	long keel
Bilge keels	yes
Superstructure material	steel
Rubbing strake	steel
Deck material	steel
Deck finish	non-skid paint
Cockpit deck finish	cork
Antifouling (year)	2017
Dorades	yes
Window frame	aluminium
Window material	double glazing
Deckhatch	yes



VRIPACK SURVEY

Portholes	aluminium
Insulation	glasswool
Mast can be lowered	hydraulic
Fuel tank (litre)	steel 2x 850 l. + 320 l. dagtank
Fuel daytank (litre)	steel 320 l.
Level indicator (daytank)	Glass
Freshwater tank (litre)	steel 1350 l.
Blackwater tank (litre)	steel 2x 350 l.
Blackwater tank extraction	pump
Wheel steering	hydraulic
Inside helm position	yes

ACCOMMODATION

Cabins	2
Berths	4
Interior	
Floor	Mable, wood & carpet
Aft deck	yes
Pilot house/deck saloon	yes
Headroom saloon (m)	2.00 m.
Heating	central heating Kabole B12 tap
Chart table	yes
Dinette	yes
Opening door to cockpit	yes
Galley	yes
Countertop	wood
Sink	GRP
Cooker	calor gas Force 10 4-burner
Oven	yes
Microwave	Pelgrim
Fridge	Kylyo combination



Freezer	yes
Hot water system	on central heating
Water pressure system	electrical Speck pump
Crockery	yes
Owners cabin	French bed
Bed length (m)	2.00 m.
Wardrobe	hanging and shelves
Bathroom	en suite
Toilet	yes
Toilet system	electric
Wash basin	at the toilet
Guest cabin 1	bunk bed
Bed length (m)	2.00 M.
Wardrobe	shelves
Bathroom	separate
Toilet	yes
Toilet system	electric
Wash basin	at the toilet
Washing machine	Whirlpool

MACHINERY

No of engines	1
Make	Perkins
Type	M185SC
HP	185
kW	135,00
Fuel	diesel
Year installed	2000
Maximum speed (kn)	8,00
Cruising speed (kn)	7,00
Engine hours	2146,2



Engine cooling system	freshwater heat exchanger
Drive	shaft
Shaft seal	yes
Engine controls	bowden cable
Gearbox	hydraulic
Bowthruster	electric
Thrust bearing	yes
Propeller type	fixed
Propeller blades	4-bladed
Propeller shaft material	stainless steel
Shaft lubrication	grease
Electric bilge pump	yes
Electrical installation	12/24/220V
Batteries	yes
Start battery	1x 210 Ah
Service battery	3x 210 Ah
Bowthruster battery	2x 210 Ah
Battery charger	Victron Centaur 12/20
Battery charger/inverter	2x Victron Phoenix Combi 24/2000/50
Solar panel	BP
Diode battery combiners	yes
Shorepower	with cable

NAVIGATION

Depth sounder	Raytheon ST60
Log	Raytheon ST60
Windset	Raytheon ST60
VHF	Raytheon Ray49E
Autopilot	Raytheon RP650
Rudder angle indicator	In autopilot
Radar	Raytheon R80 (not working)



GPS	Raytheon RN300
Navigation lights	yes

EQUIPMENT

Bathing platform	yes
Boarding ladder	stainless steel
Transom door	yes
Anchor	CQR Plough
Anchor chain	yes
Windlass	Quick
Davits	stainless steel
Davits controls	manual
Sea railing	stainless steel
Grab rail (superstructure)	yes
Railing side opening gates	yes
Wiper	3x
Horn	electric
Fenders	yes
Mooring lines	yes
Speakers in salon	yes
Speakers in cabin	yes











VRIPACK SURVEY





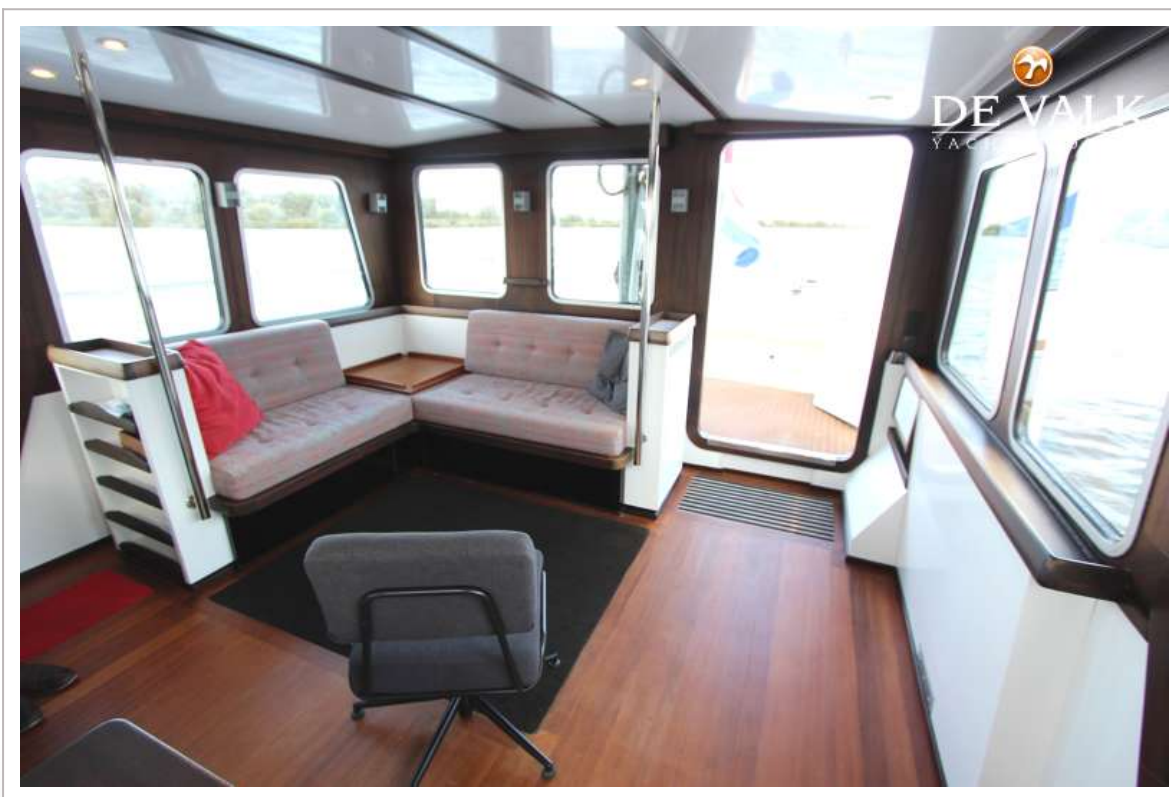
















VRIPACK SURVEY







