



JETTEN 44 SEDAN

JETTEN 44 SEDAN

BROKER'S COMMENTS

The Jetten 44 Sedan is built to specific requirements of the owner, with a great sense of taste and knowledge. Due to its particular color, flexiteak decks and a lot of stainless steel, this ship has a very luxurious feel. The Riviera Maison interior is unique, very tasteful and very thoughtful. Many heads will turn around by seeing this unique Jetten 44 Sedan.

Pieter Bosma

SPECIFICATIONS

Dimensions	13.55 x 4.50 x 1.10 (m)	Builder	Jetten Shipyard
Built	2013	Cabins	2
Material	Steel	Berths	5
Engine(s)	1 x Vetus Deutz DT66 diesel	Hp/Kw	170.07 (hp), 125.00 (kw)
Asking price	sold (VAT)	Lying	elsewhere / Not at sales office

CONTACT

Sales office	De Valk Sneek	Telephone	+31 (0)515 42 80 30
Address	Zwolsmanweg 7 8606 KC Sneek NL	E-mail	sneek@devalk.nl

DISCLAIMER

These particulars are given in good faith as supplied but cannot be guaranteed.



JETTEN 44 SEDAN

GENERAL

Model	JETTEN 44 SEDAN
Type	motor yacht
LOA (m)	13,55
LWL (m)	12,10
Beam (m)	4,50
Draft (m)	1,10
Air draft (m)	3,50
Air draft min (m)	2,50
Headroom (m)	2,01
Year built	2013
Builder	Jetten Shipyard
Country	The Netherlands
Designer	Vripack
Displacement (t)	21
CE norm	B
Hull material	steel
Hull colour	Havana Brown Metallic (Alexseal)
Hull thickness (mm)	hull 6 mm / keel 8 mm
Hull shape	hard chine
Keel type	box keel
Superstructure material	steel
Superstructure (mm)	4 mm
Deck plate thickness (mm)	4 mm
Rubbing strake	rubber
Deck material	steel
Deck finish	synthetic teak Flexi teak
Superstructure deck finish	paint Ral 9010
Cockpit deck finish	synthetic teak Flexi teak
Dorades	with flyscreens 4
Window material	double glazing 3 sheets



JETTEN 44 SEDAN

Deckhatch	with flyscreens/blinding screen 4x
Portholes	aluminium With flyscreens
Insulation	Fermocell
Mast can be lowered	manual
Fuel tank (litre)	steel 900 l.
Level indicator (fuel tank)	yes
Freshwater tank (litre)	620 l.
Level indicator (freshwater)	yes
Blackwater tank (litre)	stainless steel 120 l.
Level indicator (blackwater)	yes
Blackwater tank extraction	deck extraction + pump
Wheel steering	hydraulic
Inside helm position	yes
Emergency tiller	yes
More info on paintwork	sprayed with a two component metallic paint from Alexseal

ACCOMMODATION

Cabins	2
Berths	5
Floor	woodprint PVC
Open cockpit	yes
Deck saloon	yes
Headroom saloon (m)	2.01 m.
Heating	diesel ducted hot air Eberspacher D5L
Opening door to cockpit	4 stainless steel doors with plisse flyscreen
Galley	yes
Countertop	wood Laminated
Sink	stainless steel
Cooker	4-burner
Oven	oven and grill Smev
Fridge	Weaco 65 l.



JETTEN 44 SEDAN

Wine cooler	winecooler mounted in the steering seat Weaco MF6W
Hot water system	220V + engine
Water pressure system	electrical
Dishwasher	Bauknecht
Owners cabin	French bed
Bed length (m)	2.02 x 1.67 m. Queensize
Wardrobe	hanging and drawers
Bathroom	shared
Toilet	shared
Toilet system	electric Planus Silence
Wash basin	in the bathroom
Shower	shared Grohe 1000
Guest cabin 1	double bed
Bed length (m)	Queensize
Wardrobe	hanging and shelves
Washing machine/dryer combi	Candy Alise Evo 4853D
Extra info	interior design style Riviera Maison. karpets in the bedrooms, carpet in the salon, Plissee curtains in salon.
Extra info	two easy walking stairs to the bathing platform with steplights

MACHINERY

No of engines	1
Make	Vetus Deutz
Type	DT66
HP	170
kW	125,00
Fuel	diesel
Year installed	2013
Engine hours	407,7
Engine cooling system	freshwater heat exchanger
Drive	shaft



JETTEN 44 SEDAN

Engine controls	electrical Morse KE4
Gearbox	ZF 45A 2.03:1
Bowthruster	electric Vetus 24V 125 Kgf
Sternthruster	electric Vetus 24V 125 Kgf
Exhaust	watercooled
Thrust bearing	Aquadrive CVB 21-20
Propeller type	fixed
Propeller blades	4-bladed
Propeller shaft material	40 mm
Shaft lubrication	Water greased with Volvo seal
Manual bilge pump	yes
Electric bilge pump	yes
Electrical installation	24/220 V
Batteries	yes
Start battery	Optima Red
Service battery	2x 250 Ah
Bowthruster battery	VMF 12/22
Sternthruster battery	VMF 12/22
Battery monitor	Victron BMV 6025
Battery charger	Ctek 2x
Battery charger/inverter	Mastervolt Mass Combi 24/2000/60
Diode battery combiners	yes
Shorepower	with cable Bow and stern connection
Extra info	Yacht controller remote control for bow- & stern thruster and engine

NAVIGATION

Depth sounder/log	Raymarine I70
Plotter/GPS	Raymarine E-series

EQUIPMENT



JETTEN 44 SEDAN

Cockpit cover	yes
Window cover	frontscreen
Cockpit cushions	yes
Cockpit table	yes
Bathing platform	yes
Boarding ladder	stainless steel
Transom door	yes
Deck shower	yes
Anchor	Bruce Stainless Steel 20 kg.
Anchor chain	8 mm / 30 m
Windlass	Lofrans Royal
Deck wash	near the ancor winch
Sea railing	stainless steel
Grab rail (superstructure)	stainless steel
Railing side opening gates	yes
Wiper	3x
Horn	electric
Fenders	yes
Mooring lines	yes
TV	with electric lift and Digitenne Philips LCD
Radio-cd player	JVC KD DV 7402 CD/DVD/mp3
Speakers in salon	4x
Auto extinguisher system	yes
Extra info	2 stainless steel gas lockers
Extra info	large storage compartment under cockpit floor
Extra info	lot of storage space on board



JETTEN 44 SEDAN



JETTEN 44 SEDAN



JETTEN 44 SEDAN



JETTEN 44 SEDAN



JETTEN 44 SEDAN



JETTEN 44 SEDAN



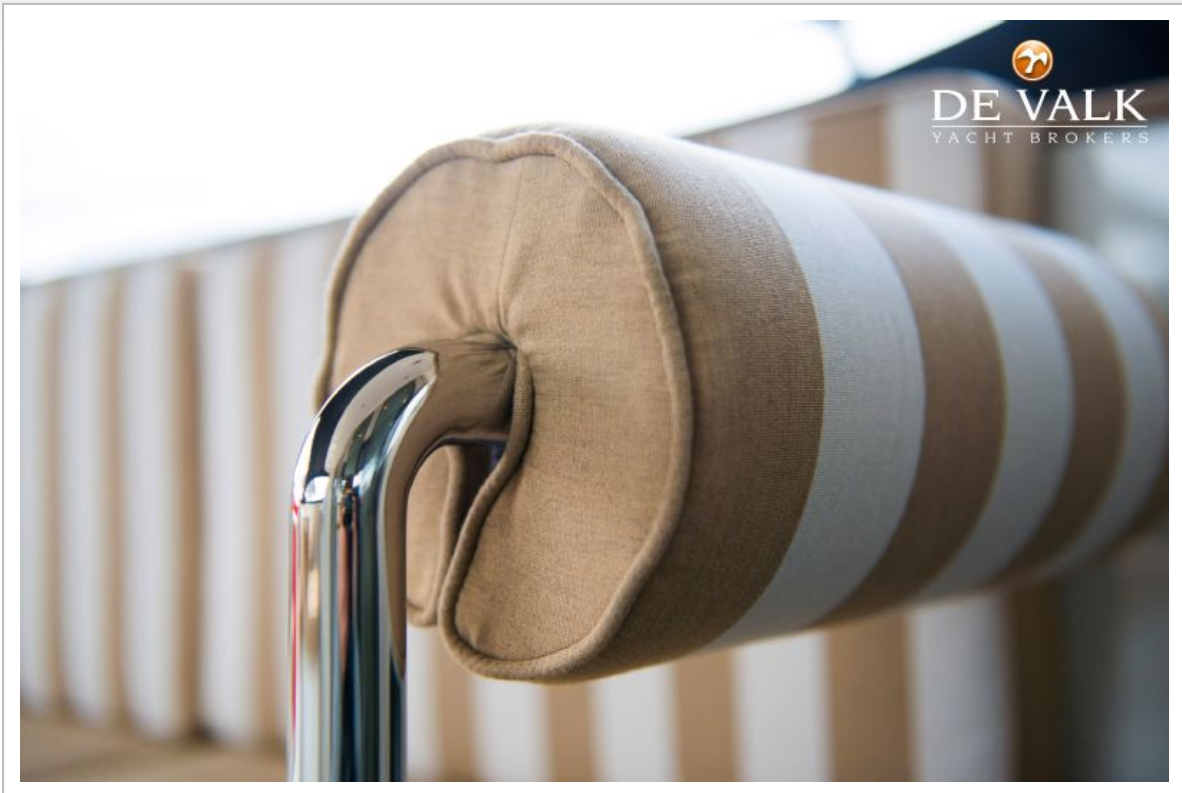
JETTEN 44 SEDAN



JETTEN 44 SEDAN



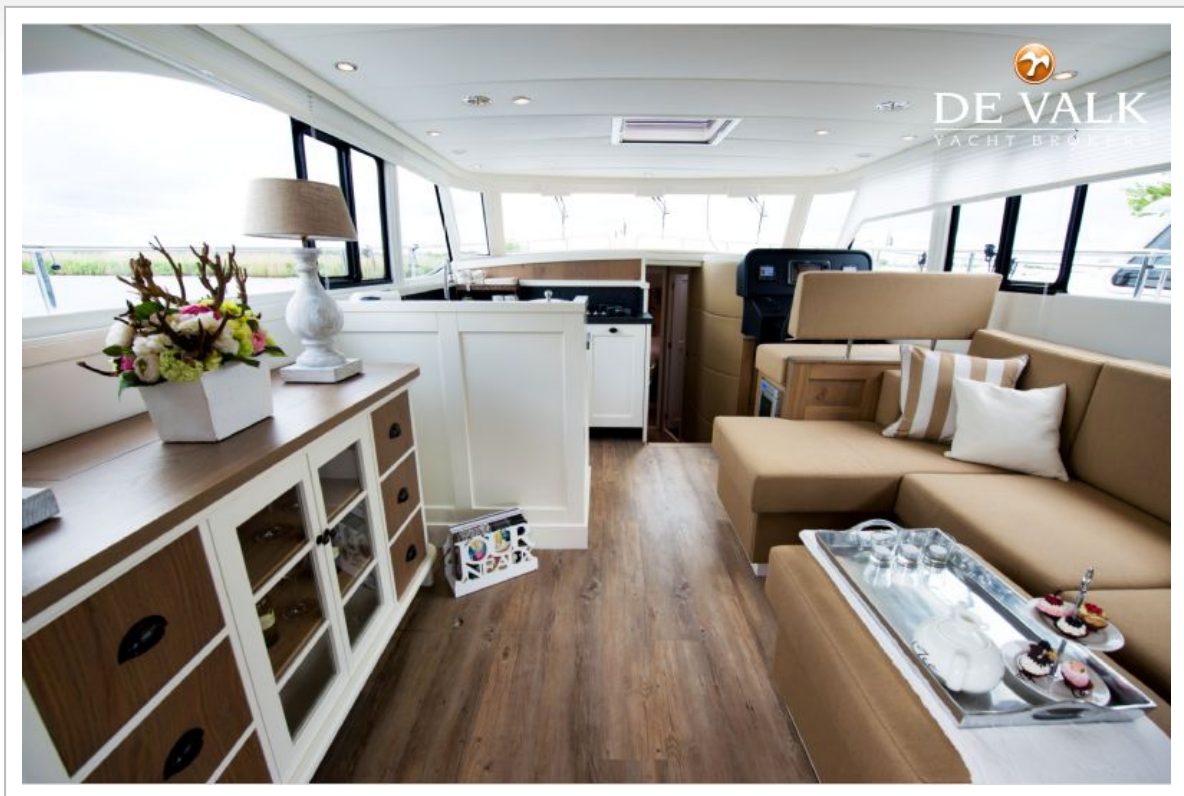
JETTEN 44 SEDAN



JETTEN 44 SEDAN



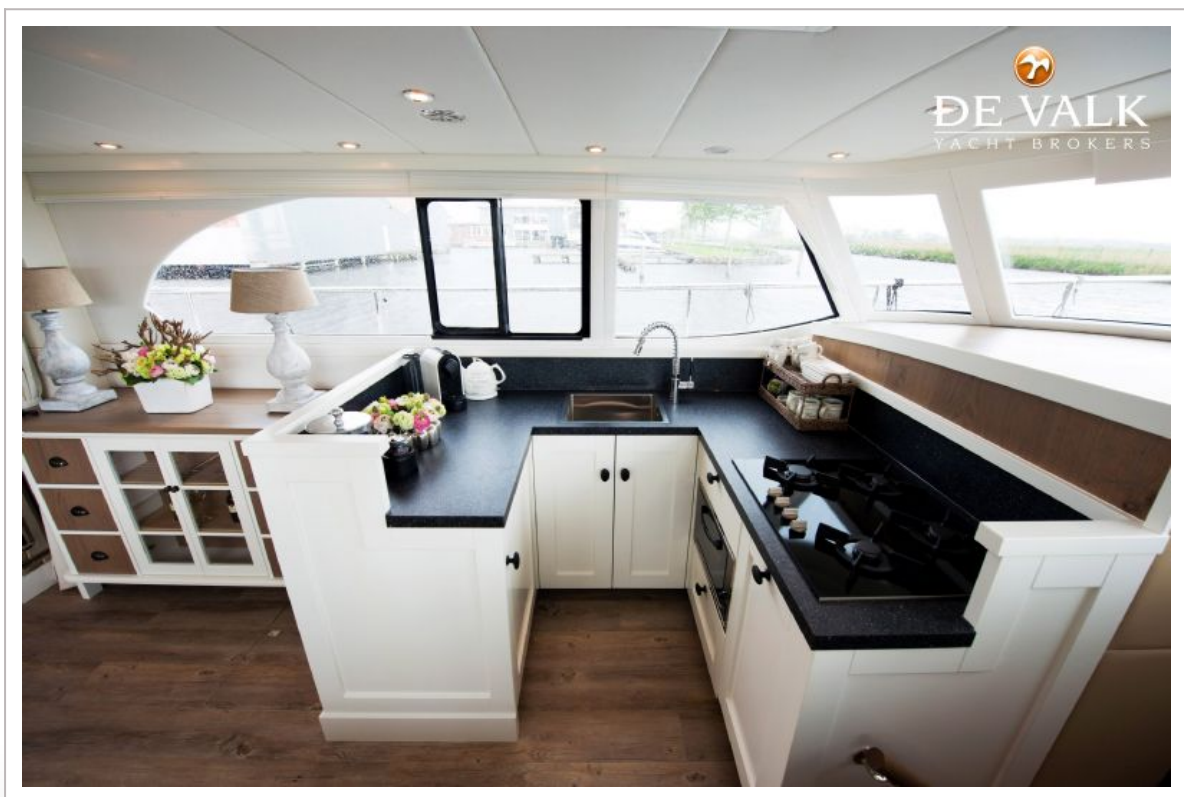
JETTEN 44 SEDAN



JETTEN 44 SEDAN



JETTEN 44 SEDAN



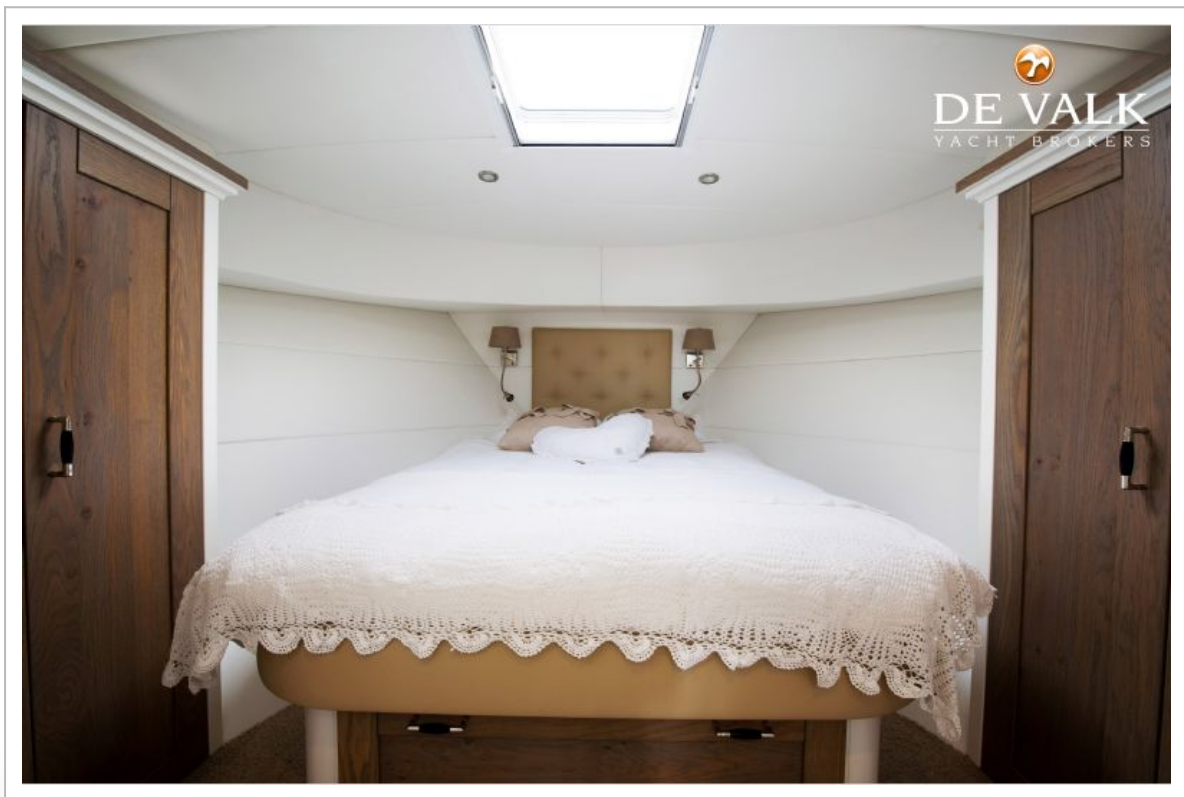
JETTEN 44 SEDAN



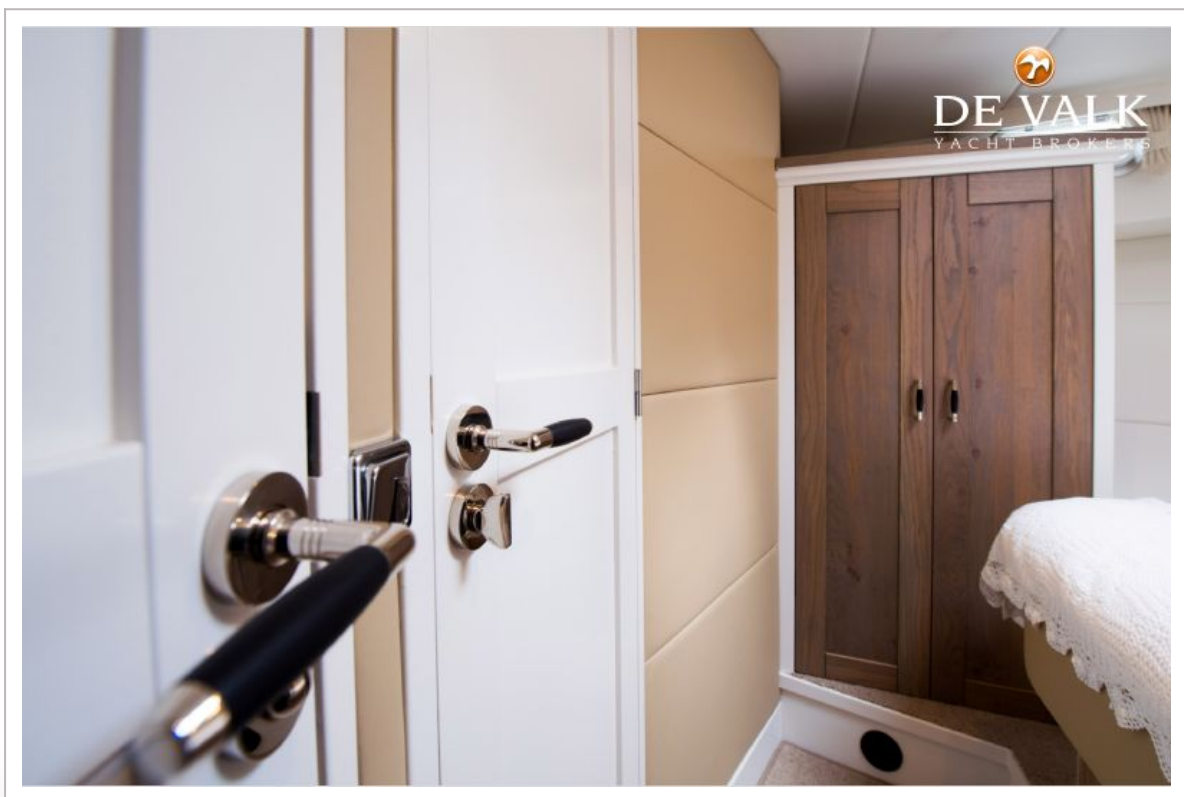
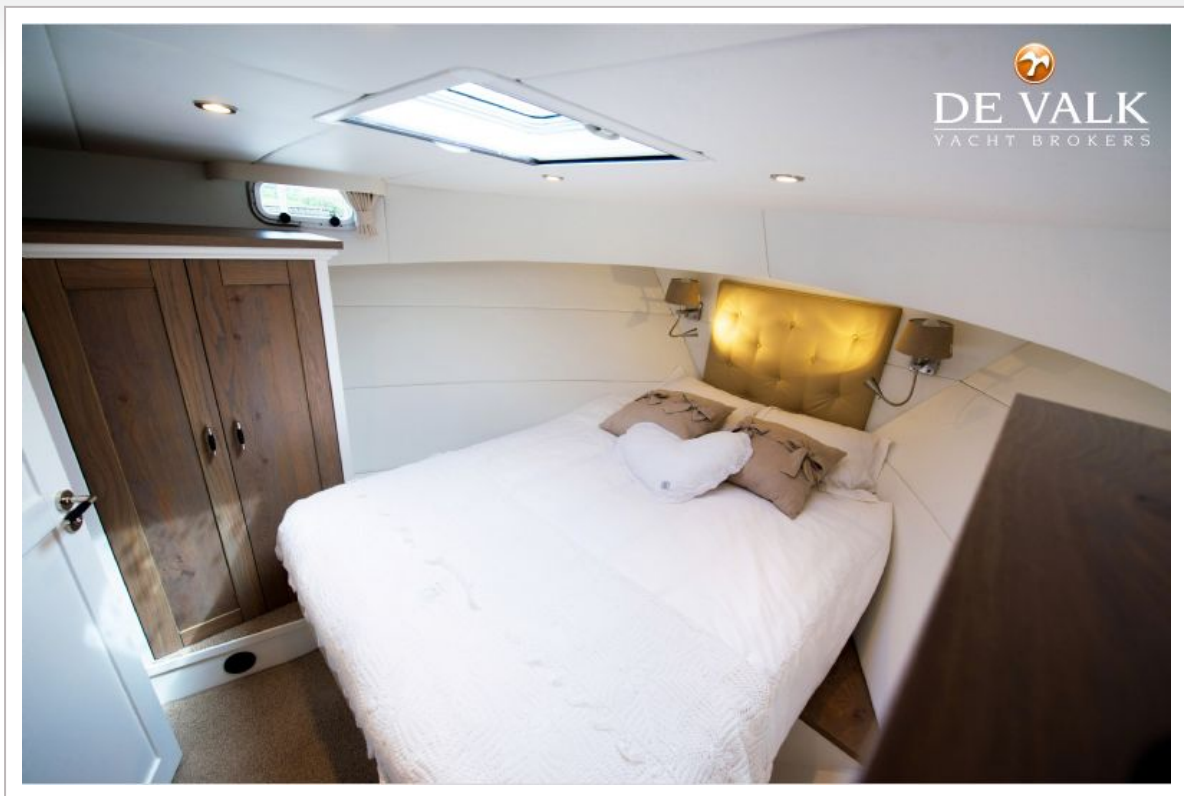
JETTEN 44 SEDAN



JETTEN 44 SEDAN



JETTEN 44 SEDAN



JETTEN 44 SEDAN



JETTEN 44 SEDAN

