



LINDEN KOTTER 13.70 AK

LINDEN KOTTER 13.70 AK

BROKER'S COMMENTS

This cutter is simply stunning in all respects. design, layout, craftsmanship, equipment and maintenance are all up to a very high standard. The layout is very suitable for 4 persons with a roomy owners cabin and a more than comfortable guest cabin. Second owner. Original build with a mast, now equipped with a foldable radar arch for much lower bridge clearance. Can be inspected in our covered salesmarina in Sneek.

Pieter Bosma

SPECIFICATIONS

Dimensions	13.75 x 4.40 x 1.25 (m)	Builder	Linden Jachtbouw
Built	1998	Cabins	2
Material	Steel	Berths	6
Engine(s)	1 x Perkins M 135 diesel	Hp/Kw	135.00 (hp), 99.22 (kw)
Asking price	sold (VAT)	Lying	at sales office

CONTACT

Sales office	De Valk Sneek	Telephone	+31 (0)515 42 80 30
Address	Zwolsmanweg 7 8606 KC Sneek NL	E-mail	sneek@devalk.nl

DISCLAIMER

These particulars are given in good faith as supplied but cannot be guaranteed.



LINDEN KOTTER 13.70 AK

GENERAL

Model	LINDEN KOTTER 13.70 AK
Type	motor yacht
LOA (m)	13,75
Beam (m)	4,40
Draft (m)	1,25
Air draft (m)	3,50
Headroom (m)	2,00
Year built	1998
Builder	Linden Jachtbouw
Country	The Netherlands
Designer	TH. Gillissen
Displacement (t)	22
CE norm	B
Hull material	steel
Hull colour	blue
Hull shape	round-bilged
Keel type	long keel
Bilge keels	yes
Superstructure material	steel
Rubbing strake	rubber
Deck material	steel
Deck finish	teak
Superstructure deck finish	paint
Antifouling (year)	2023
Dorades	yes
Window frame	aluminium
Window material	double glazing
Deckhatch	yes
Portholes	aluminium
Insulation	rockwool



LINDEN KOTTER 13.70 AK

Radar arch	collapsible
Fuel tank (litre)	steel 1630 ltr
Level indicator (fuel tank)	yes
Freshwater tank (litre)	stainless steel 775 ltr
Blackwater tank (litre)	150 ltr
Blackwater tank extraction	deck extraction + pump
Wheel steering	hydraulic
Outside helm position	hydraulic
Extra info	2 front windows can be opened

ACCOMMODATION

Cabins	2
Berths	6
Interior	teak
Floor	teak and holly
Aft deck	yes
Deck saloon	yes
Headroom saloon (m)	2.00 m
Heating	diesel ducted hot air Eberspacher
Aft Cabin	yes
Dinette	yes
Dinette to convert into berth	yes
Opening door to aft deck	Teak
Galley	yes
Countertop	plastic
Sink	stainless steel
Cooker	Spinflo 3 burner gas
Microwave	yes
Microwave/oven combi	Exquist
Fridge	with freezing compartment Coolmatic
Hot water system	220V + engine Boiler 55 ltr



LINDEN KOTTER 13.70 AK

Water pressure system	electrical
Owners cabin	French bed
Bed length (m)	2,10 m
Wardrobe	hanging/drawers/shelves
Bathroom	en suite
Toilet	en suite
Toilet system	electric
Wash basin	in the bathroom
Shower	en suite As seperate space
Guest cabin 1	v-bed
Bed length (m)	2.00 m
Wardrobe	hanging and drawers
Washing machine/dryer combi	E-zen 6th Sence

MACHINERY

No of engines	1
Make	Perkins
Type	M 135
HP	135
kW	99.22
Fuel	diesel
Year installed	1998
Maximum speed (kn)	8
Cruising speed (kn)	7
Consumption (l/hr)	4,5
Engine hours	2677
Engine cooling system	freshwater heat exchanger
Drive	shaft
Shaft seal	yes
Engine controls	bowden cable
Gearbox	hydraulic Hurth



LINDEN KOTTER 13.70 AK

Bowthruster	hydraulic
Sternthruster	hydraulic
Exhaust	watercooled
Thrust bearing	yes
Propeller type	fixed
Propeller blades	4
Propeller shaft material	stainless steel
Shaft lubrication	water
Electric bilge pump	yes
Generator	wet exhaust Mastervolt 3,5 Whisper
Batteries	yes
Start battery	12V 180 Ah
Service battery	3x 12V 220 Ah (2023)
Battery monitor	Mastervolt
Battery charger	Mastervolt 12-80
Inverter	Mastervolt 12-2000
Solar panel	2x 330 WP with Victron MPPT smart 135/35 controller
Shorepower	with cable
Extra info	Hydraulic system for bow and sternthruster replaced in 2021

NAVIGATION

Compass	Logic
Depth sounder/log	Logic
VHF	Simrad RS90S
VHF handheld	Cobra
GPS	Logic
Navigation lights	yes
Searchlight	yes

EQUIPMENT

Sprayhood	yes
-----------	-----



Sun awning	yes
Boarding ladder	stainless steel
Deck shower	yes
Anchor	Pool
Anchor chain	yes
Windlass	manual Vetus
Deck wash	yes
Davits	stainless steel
Davits controls	manual
Sea railing	stainless steel
Grab rail (superstructure)	stainless steel
Railing side opening gates	yes
Wiper	yes
Horn	electric
Fenders	yes
Mooring lines	yes
Radio-cd player	Pioneer
Speakers in salon	yes
Fire extinguisher	yes
Extinguisher in engine room	yes



LINDEN KOTTER 13.70 AK



LINDEN KOTTER 13.70 AK



LINDEN KOTTER 13.70 AK



LINDEN KOTTER 13.70 AK



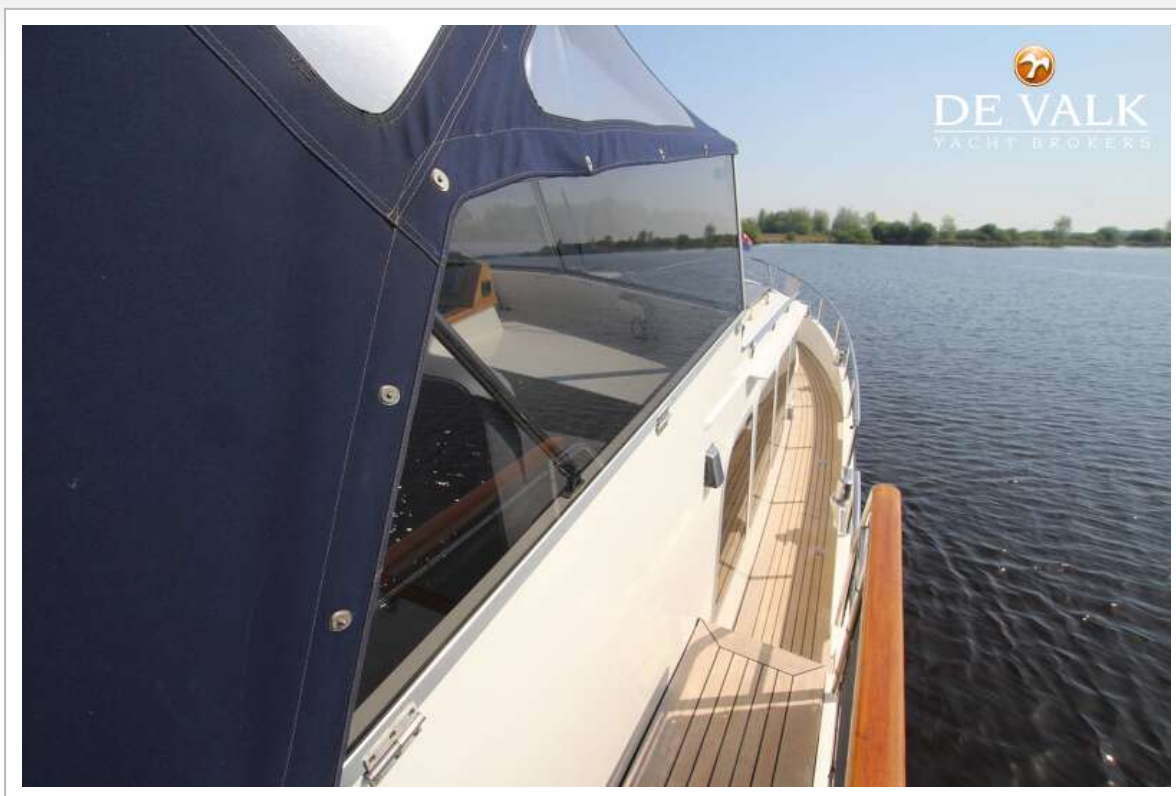
LINDEN KOTTER 13.70 AK



LINDEN KOTTER 13.70 AK



LINDEN KOTTER 13.70 AK



LINDEN KOTTER 13.70 AK



LINDEN KOTTER 13.70 AK



LINDEN KOTTER 13.70 AK



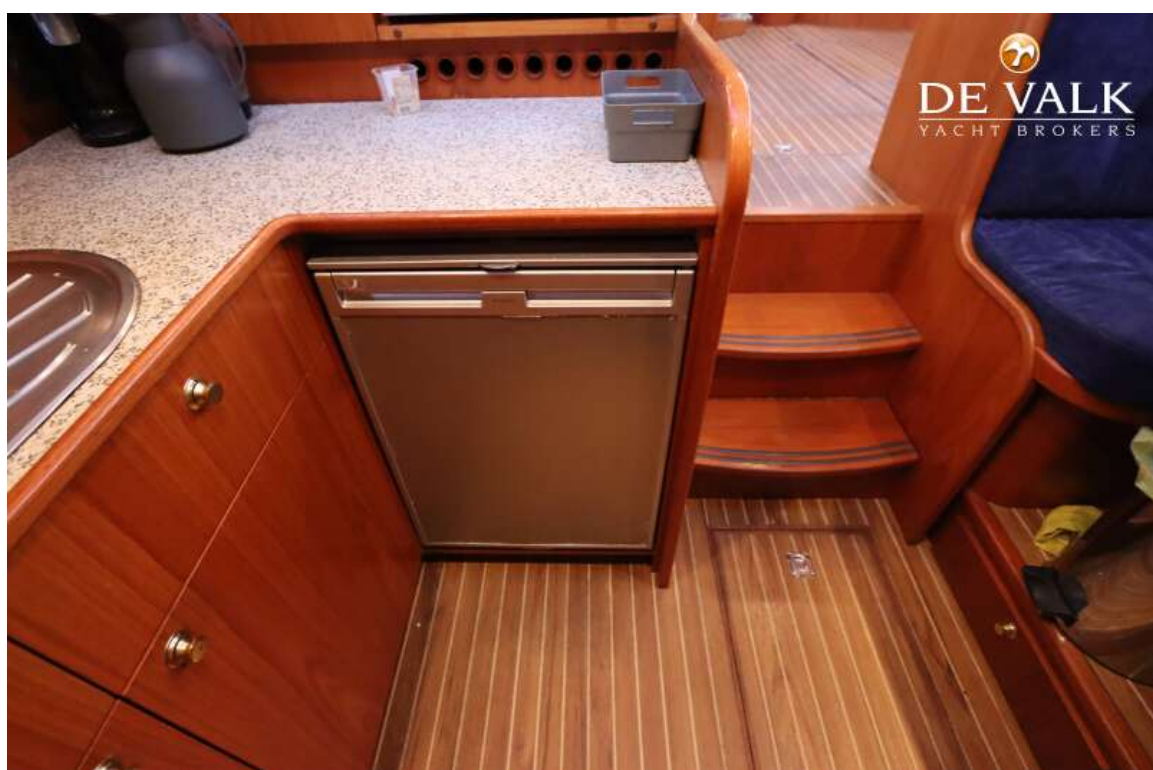
LINDEN KOTTER 13.70 AK



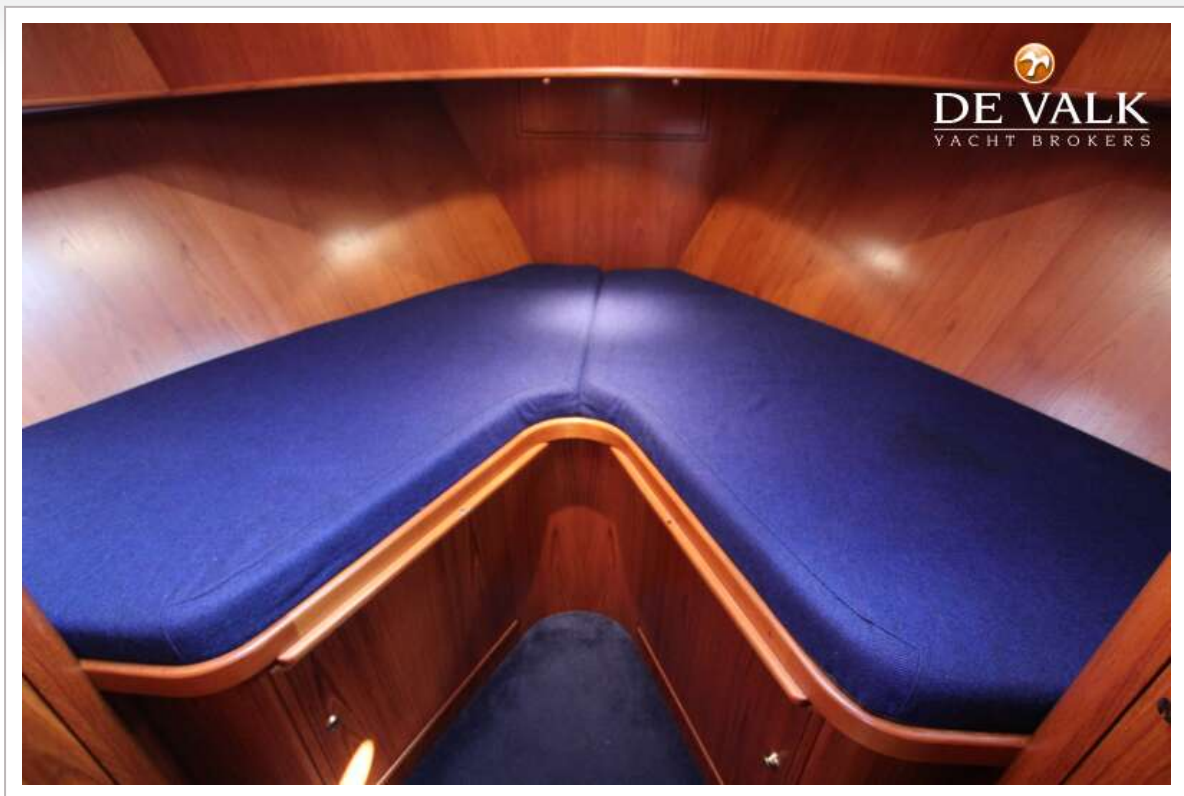
LINDEN KOTTER 13.70 AK



LINDEN KOTTER 13.70 AK



LINDEN KOTTER 13.70 AK



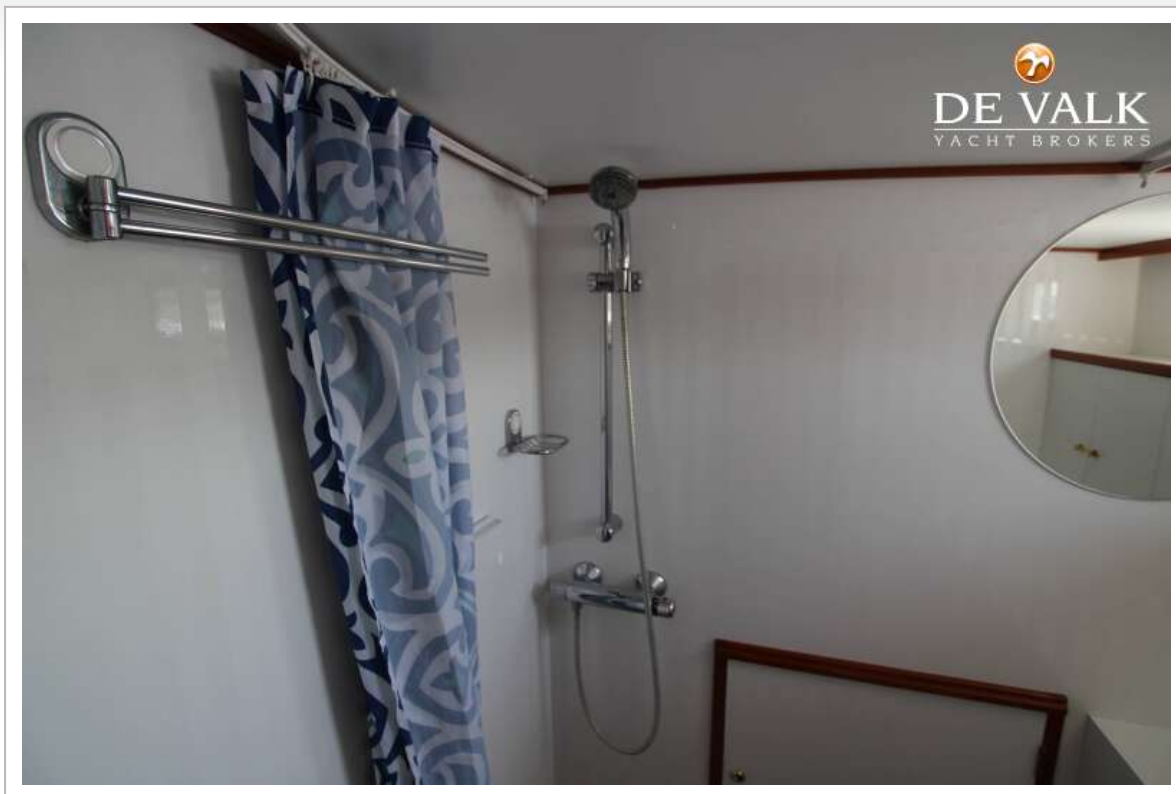
LINDEN KOTTER 13.70 AK



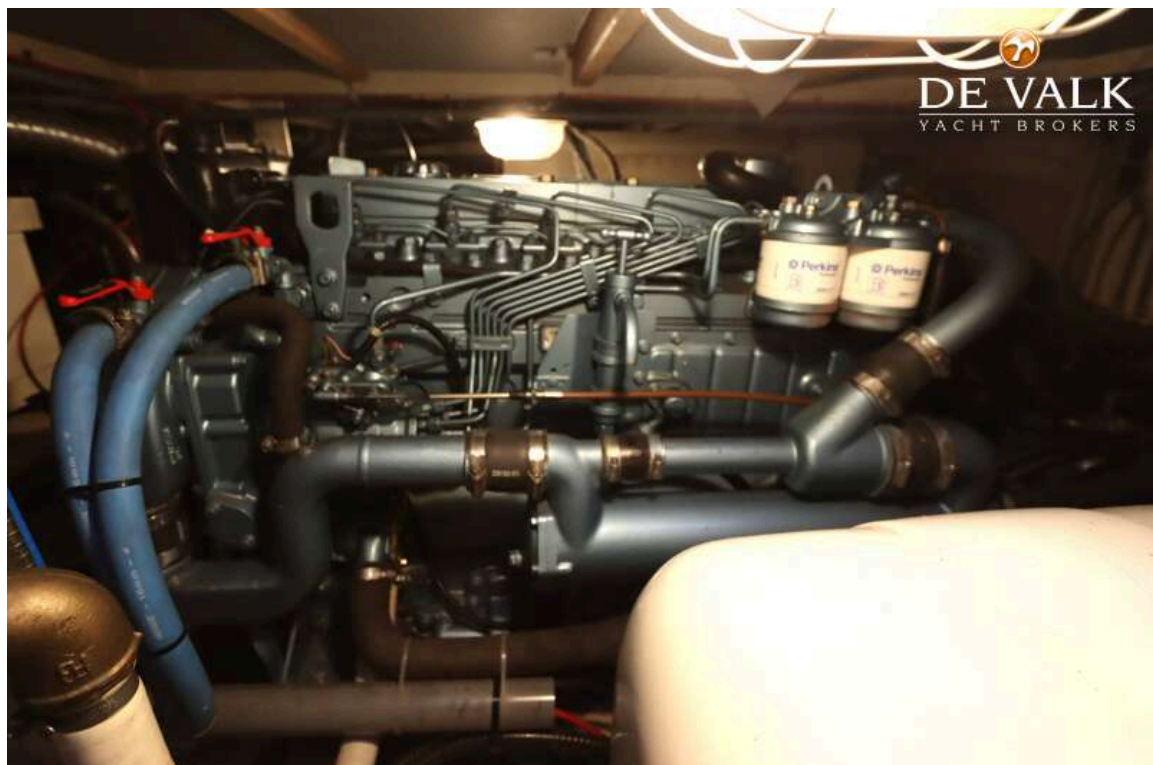
LINDEN KOTTER 13.70 AK



LINDEN KOTTER 13.70 AK



LINDEN KOTTER 13.70 AK



LINDEN KOTTER 13.70 AK

