



STENTOR 1500

STENTOR 1500

BROKER'S COMMENTS

Stentor 1500 "Waterman" is built in 1994 by Stentor Yachts. This long distance seagoing steel motor yacht is equipped for a long and comfortable stay on board. Equipped with one Iveco diesel engine, hydraulic bow- and sternthruster, double glazed windows and Kabola central heating. Furthermore she is easily capable to cross the rough seas as well as to pass through the French Canals to visit the Mediterranean. Viewing is possible in our sales office in Sneek. Sold by her first owner!

Pieter Bosma

SPECIFICATIONS

Dimensions	14.99 x 4.65 x 1.35 (m)	Builder	Stentor Yachts
Built	1994	Cabins	2
Material	Steel	Berths	6
Engine(s)	1 x Iveco 8361M 16:10 diesel	Hp/Kw	145.00 (hp), 106.58 (kw)
Asking price	sold (VAT)	Lying	at sales office

CONTACT

Sales office	De Valk Sneek	Telephone	+31 (0)515 42 80 30
Address	Zwolsmanweg 7 8606 KC Sneek NL	E-mail	sneek@devalk.nl

DISCLAIMER

These particulars are given in good faith as supplied but cannot be guaranteed.



STENTOR 1500

GENERAL

Model	STENTOR 1500
Type	motor yacht
LOA (m)	14,99
Beam (m)	4,65
Draft (m)	1,35
Air draft (m)	3,00
Headroom (m)	2,00
Year built	1994
Builder	Stentor Yachts
Country	Romania
Designer	Vripack
Displacement (t)	36
CE norm	NA
Hull material	steel
Hull colour	black
Hull shape	multi hard chine
Keel type	long keel
Superstructure material	steel
Rubbing strake	rubber
Deck material	steel
Deck finish	non-skid paint
Superstructure deck finish	teak
Dorades	yes
Window frame	aluminium
Window material	double glazing
Deckhatch	yes
Portholes	yes
Insulation	rockwool
Mast can be lowered	hydraulic
Fuel tank (litre)	steel 2x 1900 l.



STENTOR 1500

Level indicator (fuel tank)	VDO
Freshwater tank (litre)	stainless steel 2x 1000 l.
Level indicator (freshwater)	VDO
Blackwater tank (litre)	steel 400 l.
Blackwater tank extraction	deck extraction + uw line
Greywater tank (litre)	200 l.
Wheel steering	hydraulic
Inside helm position	yes
Outside helm position	yes
More info on paintwork	professional repainted with Awlgripp

ACCOMMODATION

Cabins	2
Berths	6
Interior	mahogany
Floor	carpet
Aft deck	yes
Saloon	yes
Headroom saloon (m)	2.00 m.
Sliding roof	manual
Heating	central heating Kabola B17 tap
Heating 2	electric 220V Inserted in central heating system
Chart table	yes
Aft Cabin	yes
Dinette	yes
Opening door to aft deck	yes
Galley	yes
Countertop	plastic
Sink	stainless steel
Cooker	electric Etna 4-burner
Extractor	Electrolux CK140



STENTOR 1500

Microwave/oven combi	Bosch Gourmet 8622
Fridge	Pelgrim 2224/2
Freezer	yes
Hot water system	on central heating
Water pressure system	electrical
Owners cabin	French bed
Bed length (m)	2.05 x 1.80 m.
Wardrobe	hanging/drawers/shelves
Bathroom	en suite
Toilet	en suite
Toilet system	electric
Wash basin	at the toilet
Shower	en suite
Guest cabin 1	v-bed 2x
Bed length (m)	upper bunks 2.00 x 0.80 m. lower bunks 1.95 x 0.75 m.
Wardrobe	hanging and shelves
Bathroom	separate
Toilet	
Toilet system	electric
Wash basin	in the bathroom
Shower	

MACHINERY

No of engines	1
Make	Iveco
Type	8361M 16:10
HP	145
kW	106,58
Fuel	diesel
Year installed	1994
Engine hours	1013,93



STENTOR 1500

Engine cooling system	freshwater heat exchanger
Drive	shaft
Shaft seal	yes
Engine controls	bowden cable
Gearbox	hydraulic Velvet 2,57:1
Bowthruster	hydraulic Veldman
Sternthruster	hydraulic Veldman
Exhaust	watercooled
Propeller type	fixed
Propeller blades	4-bladed
Propeller shaft material	stainless steel
Shaft lubrication	water
Electric bilge pump	3x
Electrical installation	24/220 V
Generator	wet exhaust Ruggerini 4 cylinder
Running hours generator	146,9
Batteries	yes
Start battery	2x 120 Ah Calcium
Service battery	6x 230 Ah Calcium
Generator battery	1x 72 Ah Calcium
Battery monitor	Victron Mainmanager
Battery charger	Victron Skylla 24/75
Inverter	Victron Atlas 24/1200
Diode battery combiners	2x Victron
Shorepower	with cable
Extra info	Veldman Hydraulics

NAVIGATION

Electric compass	VDO Logic
Depth sounder	VDO Logic
Log	VDO Logic



Repeater	outside VDO Logic Multifunction
Fish finder	Apelco Fishfinder/plotter 560
VHF	in- and outside connection Shipmate RS8115
Autopilot	VDO Logic
Radar	Raytheon R21X
Plotter/GPS	one inside and one outside VDO Logic map 10
Navtex	Target Navtex
Radio receiver	Grundig Satellite 700
EPIRB	Ittron Tron
Navigation lights	yes
Searchlight	yes

EQUIPMENT

Fixed windscreen	yes
Sprayhood	yes
Cockpit table	Teak
Cockpit chairs	Teak
Bathing platform	yes
Boarding ladder	yes
Deck shower	yes
Anchor	Danforth
Anchor chain	yes
Windlass	hydraulic
Deck wash	bow- and aftship
Davits	stainless steel
Davits controls	electrical
Sea railing	stainless steel
Grab rail (superstructure)	yes
Railing side opening gates	yes
Life raft	container
Life raft (pers)	8



Last life raft survey	03-1994
Danbuoy	2x
Wiper	inside 2x, outside 3x
Horn	air pressure
Fenders	yes
Mooring lines	yes
Fire extinguisher	yes
Extra info	heavy stainless steel bollards



STENTOR 1500



STENTOR 1500



STENTOR 1500



STENTOR 1500



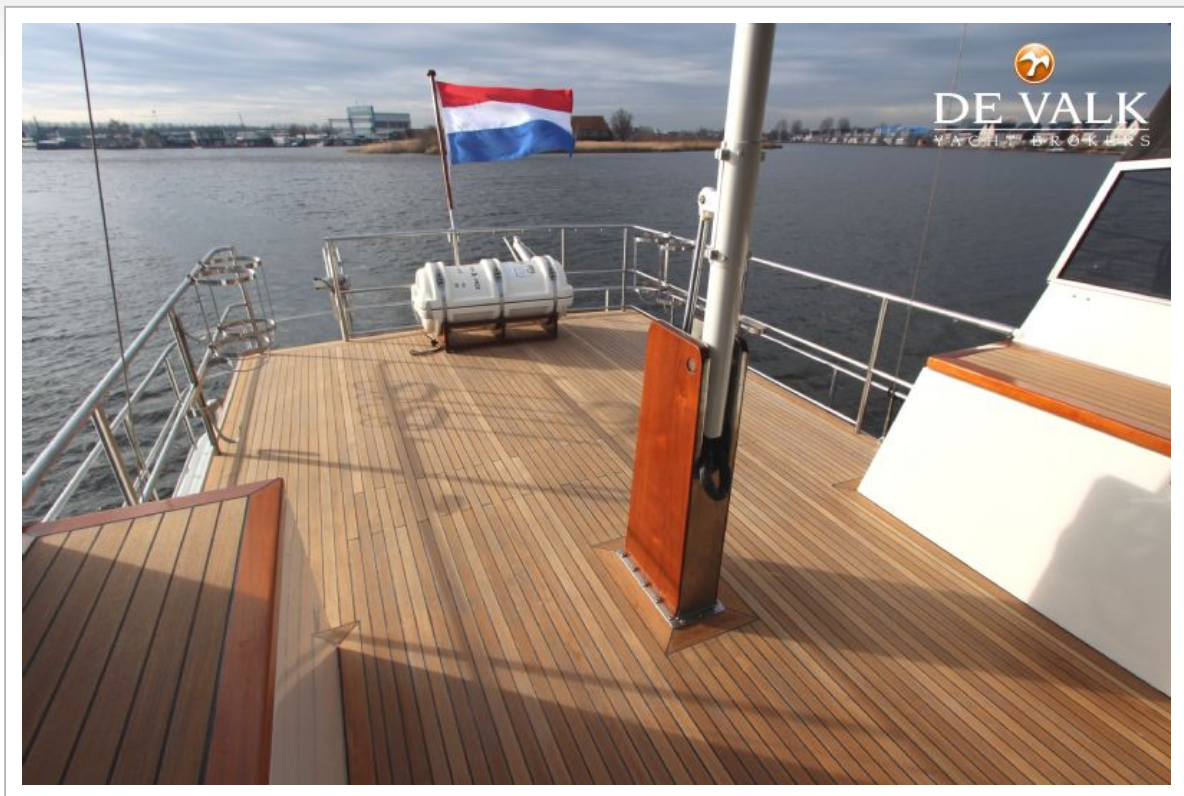
STENTOR 1500



STENTOR 1500



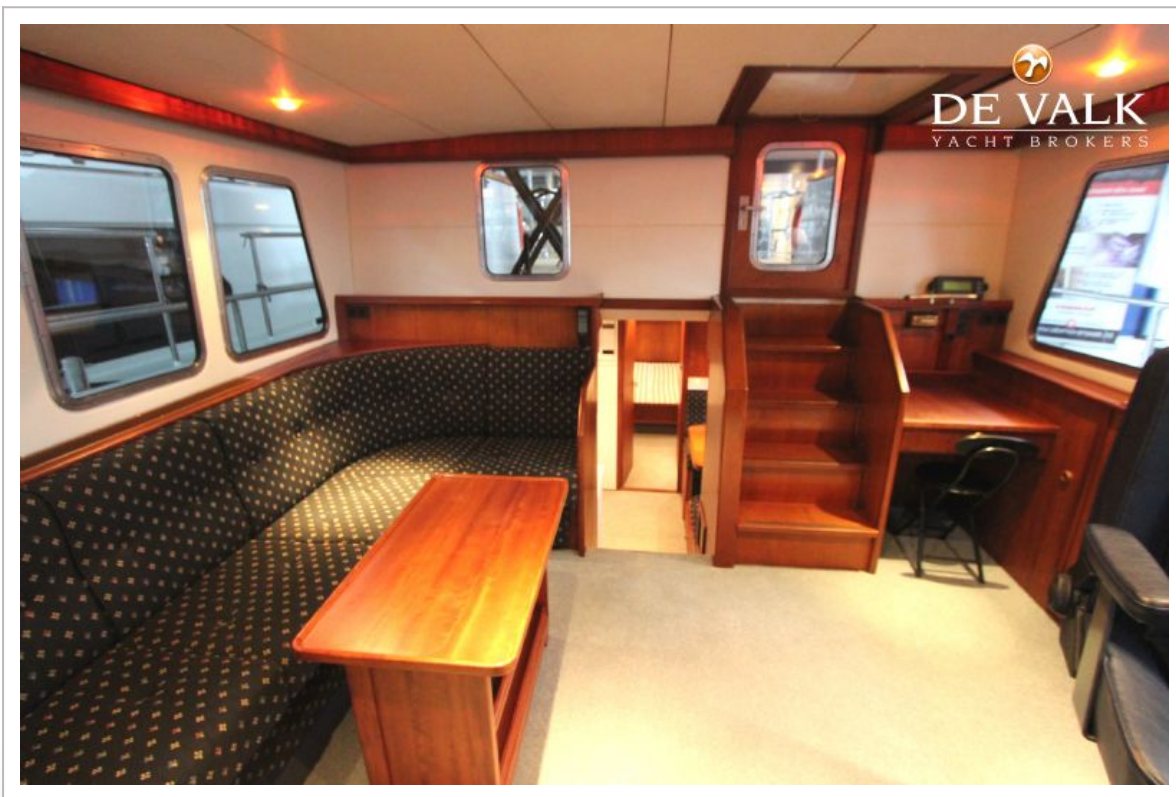
STENTOR 1500



STENTOR 1500



STENTOR 1500



STENTOR 1500



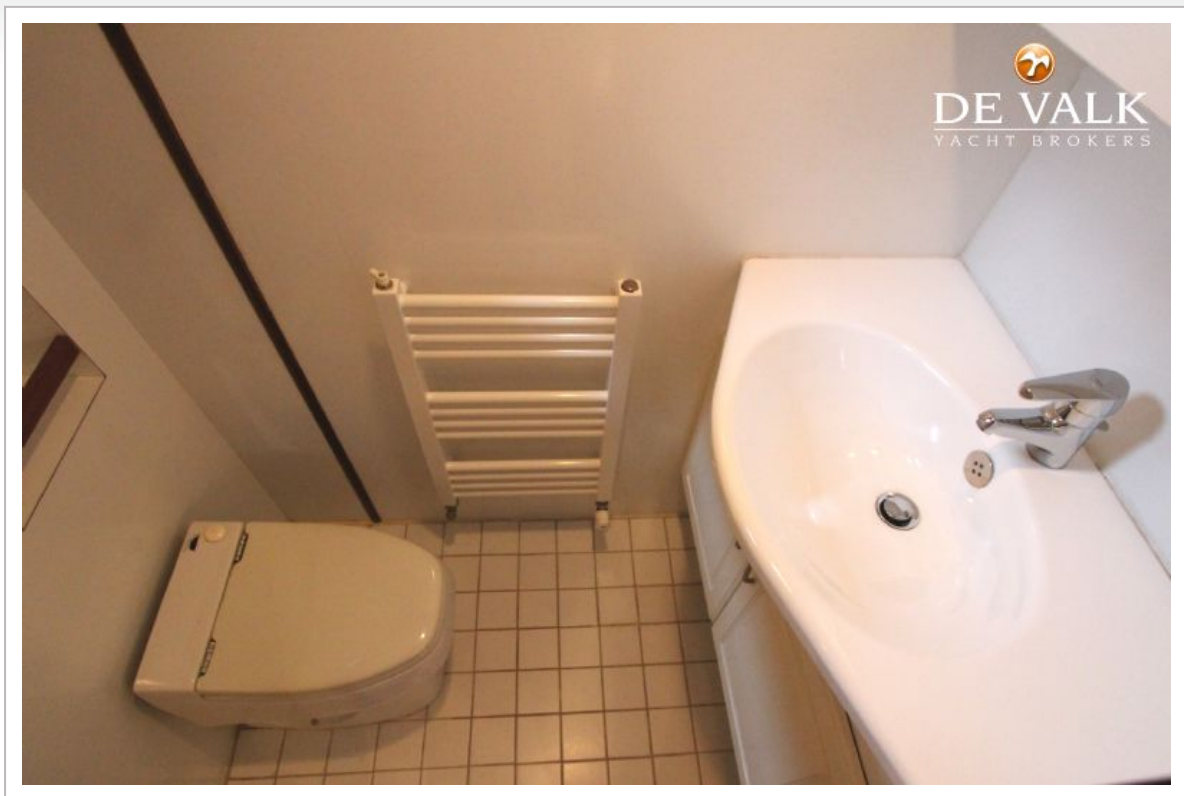
STENTOR 1500



STENTOR 1500



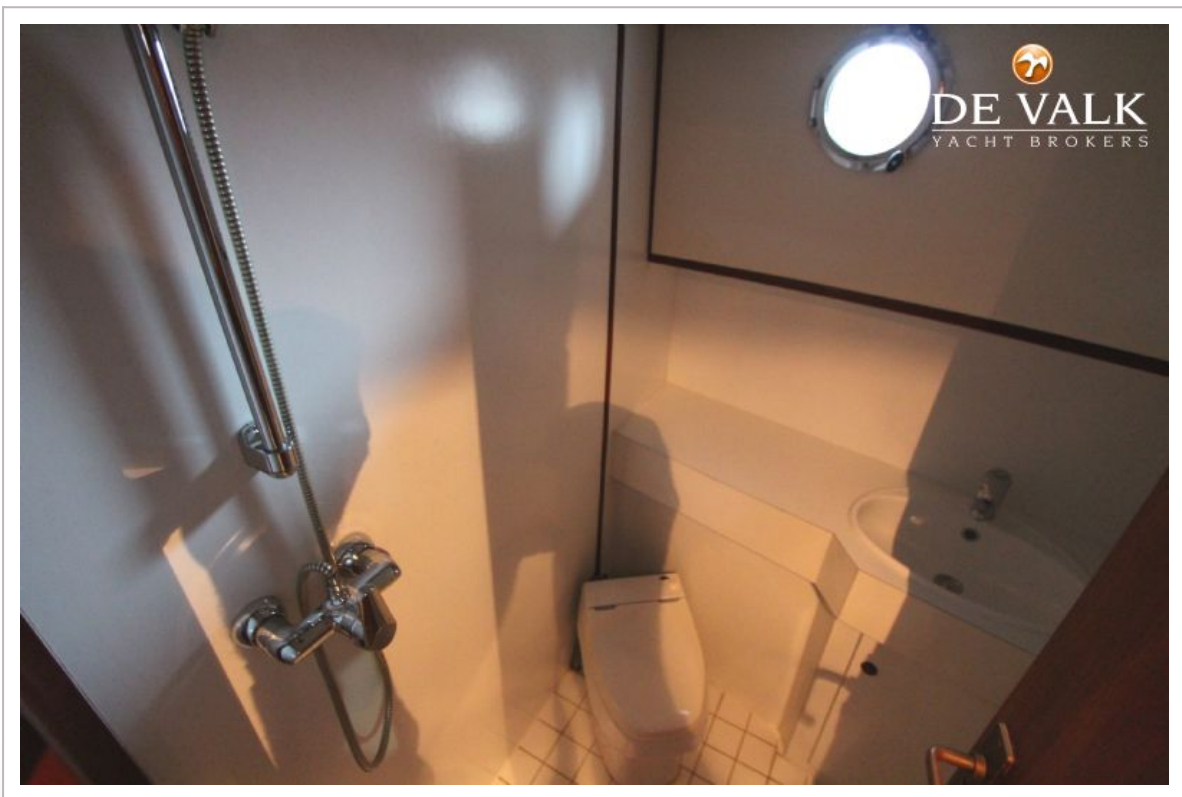
STENTOR 1500



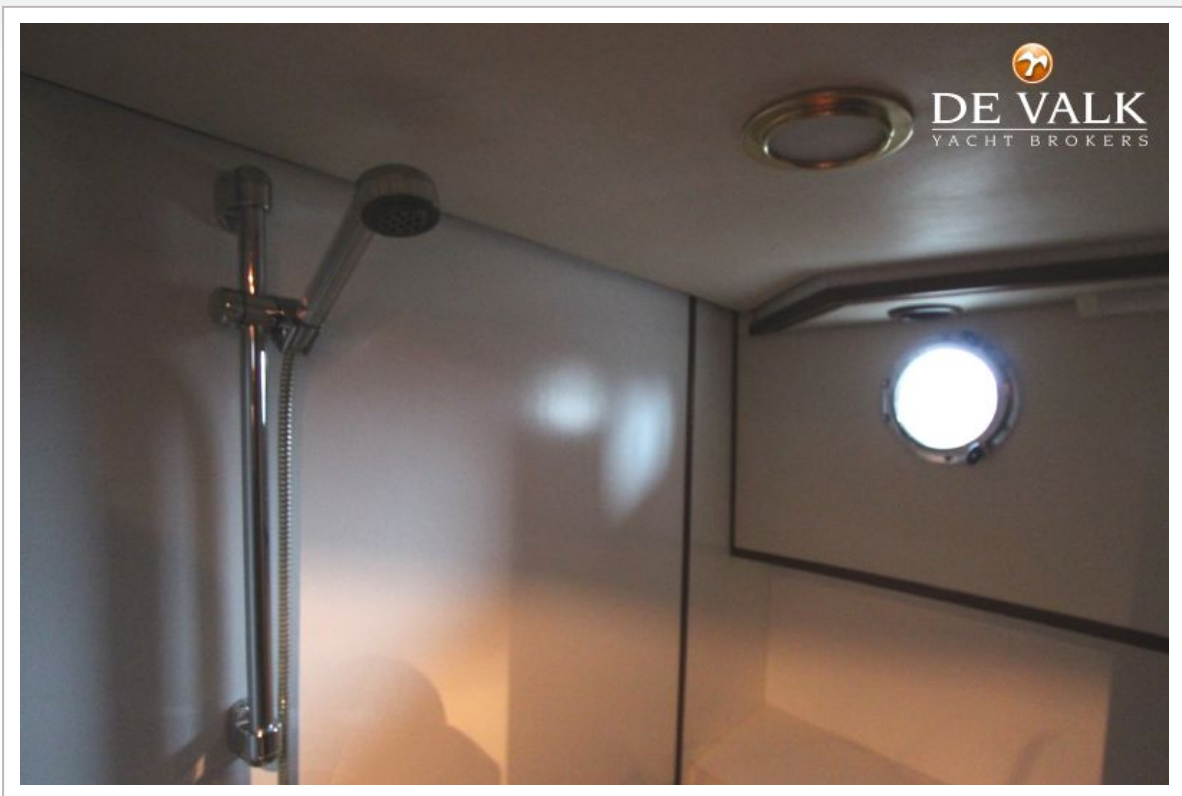
STENTOR 1500



STENTOR 1500



STENTOR 1500



STENTOR 1500



STENTOR 1500

