



LINSSEN GRAND STURDY 470

LINSSSEN GRAND STURDY 470

BROKER'S COMMENTS

Linssen Grand Sturdy 470 "Hakamede" build at Linssen Yachts in 2003. This Linssen is very well equipped and suitable for longer stay onboard. Double glazed windows, kabola central heating, 65L boiler and seperate airco control in every room. Two cabins with private bathroom and two extra berths on the dinette. Two Volvo Penta diesel engines, bow- and sternthruster, Onan generator and a Victron charger/inverter. "Hecamede" is well maintained and worth a trip to our sales office.

Arne Doodeman

SPECIFICATIONS

| | | | |
|---------------------|----------------------------------|----------------|------------------------------|
| Dimensions | 14.30 x 4.45 x 1.36 (m) | Builder | Linssen Yachts |
| Built | 2003 | Cabins | 2 |
| Material | Steel | Berths | 4 |
| Engine(s) | 2 x Volvo Penta TAMD41H-B diesel | Hp/Kw | 2 x 145.00 (hp), 106.58 (kw) |
| Asking price | sold (VAT) | Lying | at sales office |

CONTACT

| | | | |
|---------------------|--------------------------------------|------------------|---------------------|
| Sales office | De Valk Sneek | Telephone | +31 (0)515 42 80 30 |
| Address | Zwolsmanweg 7 8606 KC Sneek NL | E-mail | sneek@devalk.nl |

DISCLAIMER

These particulars are given in good faith as supplied but cannot be guaranteed.



GENERAL

| | |
|-----------------------------|--------------------------|
| Model | LINSSEN GRAND STURDY 470 |
| Type | motor yacht |
| LOA (m) | 14,30 |
| Beam (m) | 4,45 |
| Draft (m) | 1,36 |
| Air draft (m) | 3,60 |
| Headroom (m) | 2,00 |
| Year built | 2003 |
| Builder | Linssen Yachts |
| Country | The Netherlands |
| Designer | Anne Elsinga |
| Displacement (t) | 27 |
| CE norm | B |
| Hull material | steel |
| Hull colour | blue |
| Hull shape | multi hard chine |
| Keel type | long keel |
| Superstructure material | steel |
| Rubbing strake | fender rope |
| Deck material | steel |
| Deck finish | teak |
| Antifouling (year) | 2017 |
| Window frame | aluminium Marex |
| Window material | double glazing |
| Deckhatch | 4x Gebo |
| Portholes | yes |
| Insulation | foam |
| Mast can be lowered | electric |
| Fuel tank (litre) | steel 1760 |
| Level indicator (fuel tank) | VDO |



LINSSEN GRAND STURDY 470

| | |
|------------------------------|------------------------------------------------|
| Freshwater tank (litre) | polyethylene 660 |
| Level indicator (freshwater) | VDO |
| Blackwater tank (litre) | polyethylene 220 |
| Level indicator (blackwater) | Turotest |
| Blackwater tank extraction | deck extraction + pump |
| Wheel steering | hydraulic |
| Inside helm position | yes |
| Outside helm position | hydraulic |
| Extra info | All lights are LED including navigation lights |

ACCOMMODATION

| | |
|-------------------------------|----------------------------------------------------|
| Cabins | 2 |
| Berths | 4 |
| Interior | cherry |
| Floor | teak and holly |
| Aft deck | yes |
| Saloon | yes |
| Heating | central heating Kabola |
| Air-conditioning | single cycle airco Cruisair 3 way air-conditioning |
| Aft Cabin | yes |
| Dinette | yes |
| Dinette to convert into berth | yes |
| Opening door to aft deck | yes |
| Galley | yes |
| Countertop | Duropal |
| Sink | stainless steel Double sink |
| Cooker | ceramic Siemens 4 burner |
| Extractor | yes |
| Microwave/oven combi | Siemens |
| Fridge | 2 x |
| Freezer | In fridge |



LINSSEN GRAND STURDY 470

| | |
|-----------------------------|-------------------------|
| Hot water system | 220V + engine 65L |
| Water pressure system | yes |
| Dishwasher | Eumenia |
| Owners cabin | French bed |
| Wardrobe | hanging and shelves |
| Bathroom | en suite |
| Toilet | yes |
| Toilet system | electric |
| Wash basin | yes |
| Shower | yes |
| Guest cabin 1 | v-bed |
| Wardrobe | hanging and shelves |
| Toilet | en suite |
| Toilet system | electric |
| Wash basin | yes |
| Shower | en suite |
| Washing machine/dryer combi | Eumenia Sparmeister 802 |

MACHINERY

| | |
|-----------------------|---------------------------|
| No of engines | 2 |
| Make | Volvo Penta |
| Type | TAMD41H-B |
| HP | 145,00 |
| kW | 106,58 |
| Fuel | diesel |
| Year installed | 2003 |
| Maximum speed (kn) | 10 |
| Cruising speed (kn) | 8-9 |
| Consumption (l/hr) | 6 |
| Engine hours | 1750 |
| Engine cooling system | freshwater heat exchanger |



LINSSEN GRAND STURDY 470

| | |
|--------------------------|----------------------------------|
| Drive | shaft |
| Engine controls | bowden cable Morse |
| Gearbox | hydraulic |
| Bowthruster | electric Vetus 11 HP |
| Sternthruster | electric Vetus 11 HP |
| Thrust bearing | yes |
| Propeller type | fixed |
| Propeller blades | 5 bladed |
| Propeller shaft material | stainless steel |
| Shaft lubrication | water |
| Electric bilge pump | yes |
| Generator | Onan 9Kw |
| Running hours generator | 318 hr (8-06-2017) |
| Service battery | New 2017 |
| Battery monitor | Victron BMV-501, Victron control |
| Battery charger/inverter | Victron Quatro, new 2017 |
| Shorepower | with cable |

NAVIGATION

| | |
|------------------------|---------------------------------|
| Electric compass | Raymarine ST60 |
| Depth sounder/log | Raymarine ST60 Tridata |
| Windset | Raymarine ST60 |
| VHF | Raymarine Ray 260E (2015) |
| Autopilot | Raymarine ST6001+ |
| Rudder angle indicator | In the autopilot |
| Radar | Raymarine RD418HD 4kw (2015) |
| Plotter/GPS | Raymarine MFD A-serie 9' (2015) |
| Wifi antenna | 4F antenna on mast |
| Navigation lights | yes |

EQUIPMENT



LINSSEN GRAND STURDY 470

| | |
|-----------------------------|--------------------|
| Sprayhood | yes |
| Bimini | yes |
| Cockpit cushions | yes |
| Cockpit table | yes |
| Cockpit chairs | yes |
| Bathing platform | yes |
| Boarding ladder | yes |
| Gangway | Opacmare |
| Deck shower | yes |
| Anchor | yes |
| Anchor chain | yes |
| Windlass | electrical Lewmar |
| Deck wash | yes |
| Sea railing | stainless steel |
| Grab rail (superstructure) | stainless steel |
| Railing side opening gates | 3 x |
| Life raft | container Plastimo |
| Wiper | yes |
| Horn | yes |
| Fenders | yes |
| Mooring lines | yes |
| TV | Toshiba |
| TV receiver | yes |
| Radio-cd player | JVC |
| Fire extinguisher | yes |
| Extinguisher in engine room | yes |



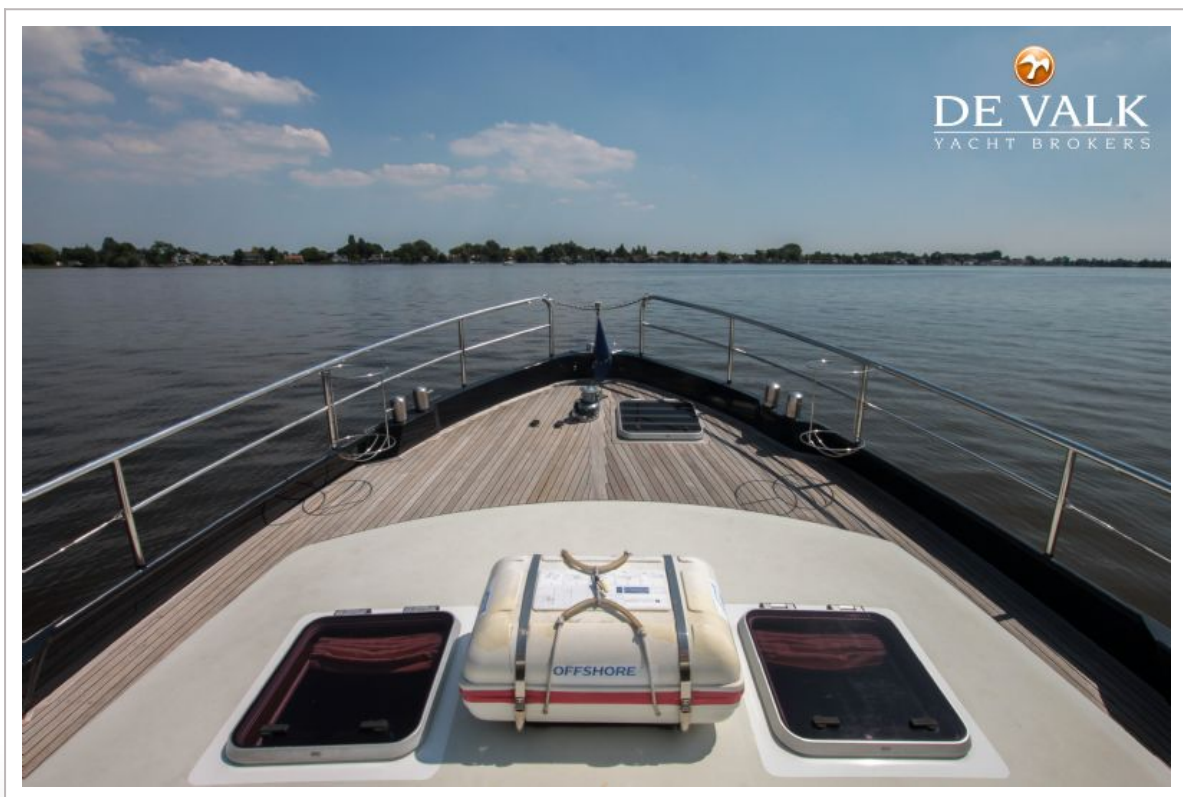
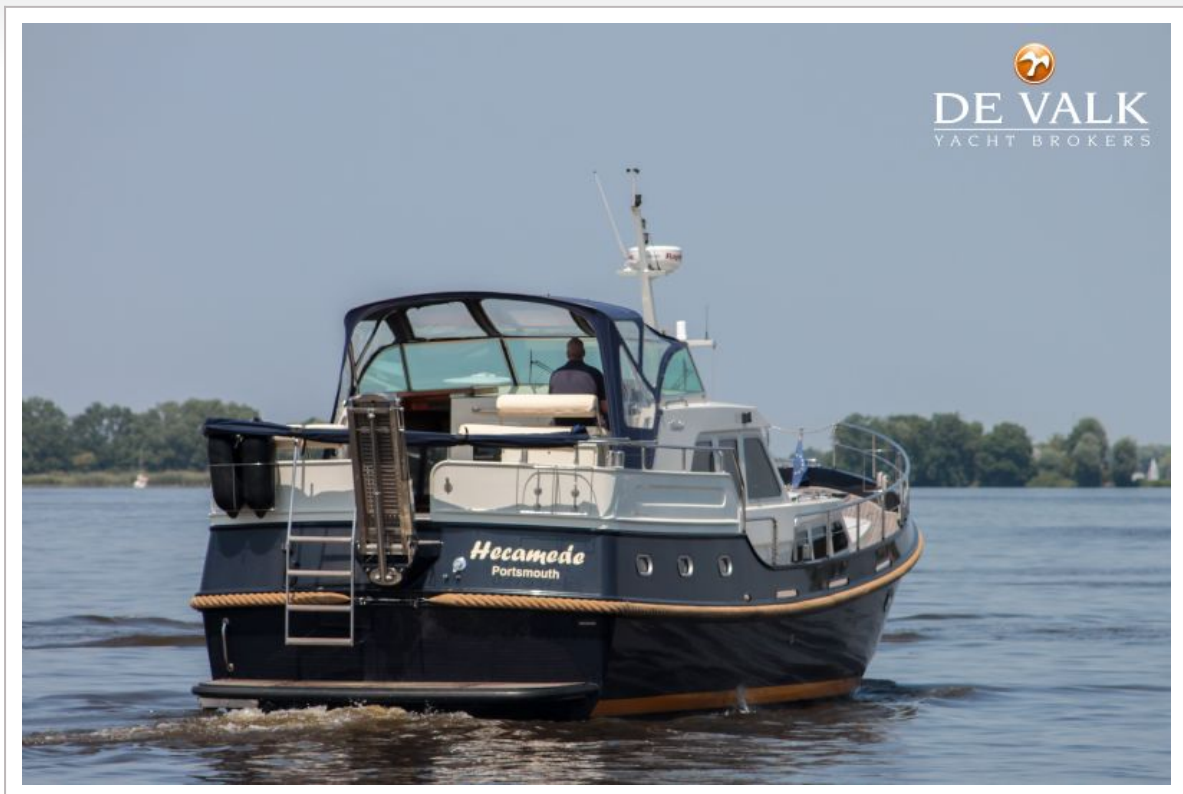
LINSSEN GRAND STURDY 470



LINSSEN GRAND STURDY 470



LINSSEN GRAND STURDY 470



LINSSEN GRAND STURDY 470



LINSSEN GRAND STURDY 470



LINSSEN GRAND STURDY 470



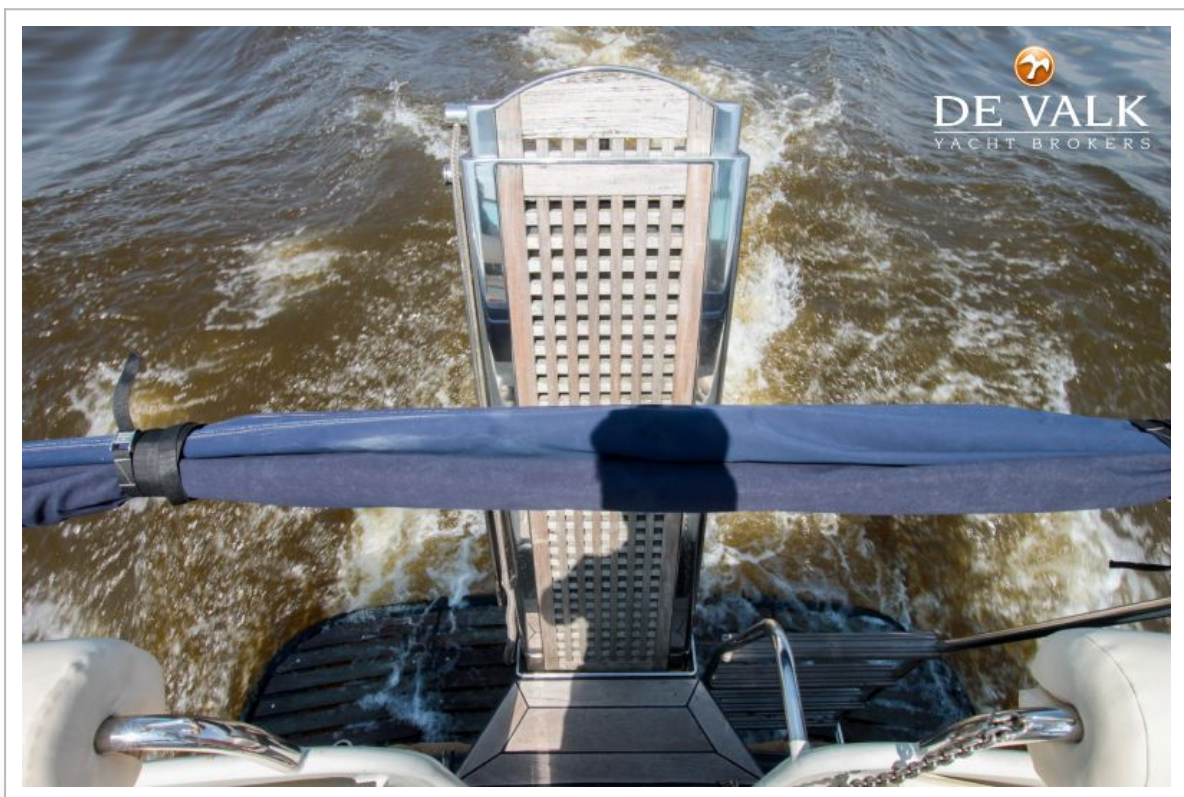
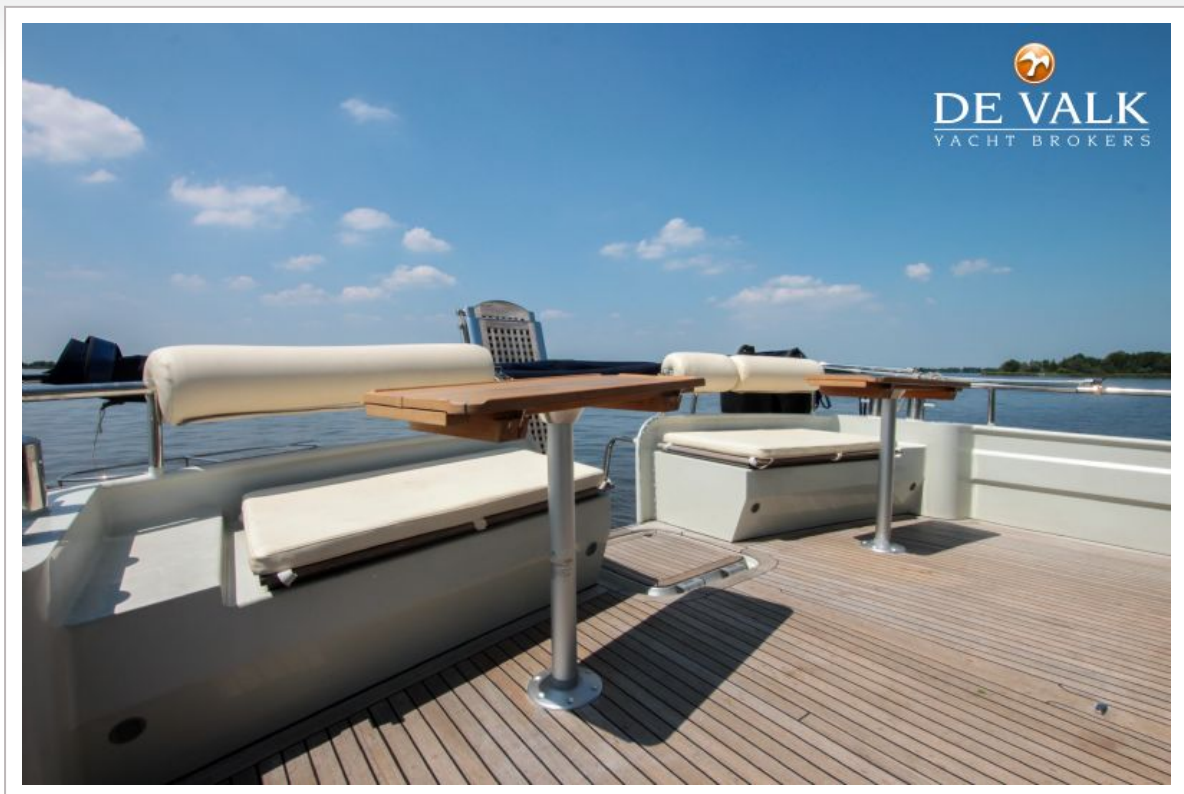
LINSSEN GRAND STURDY 470



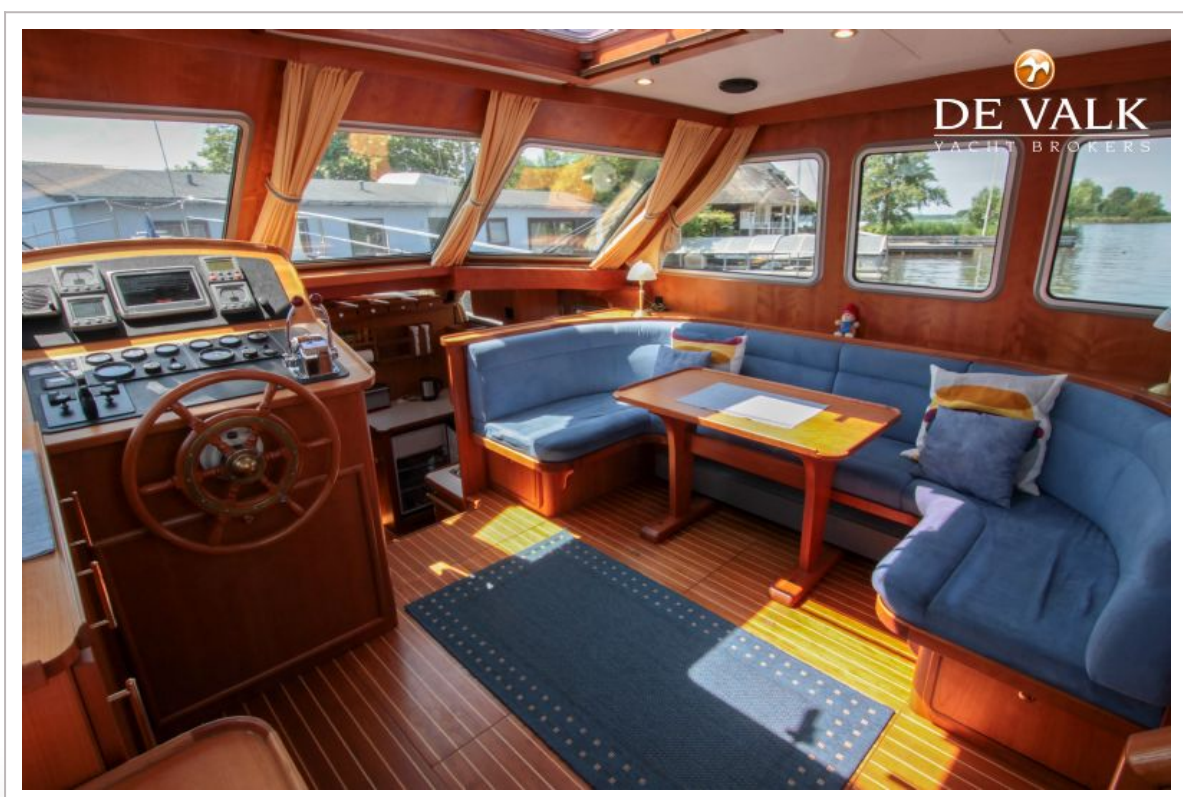
LINSSEN GRAND STURDY 470



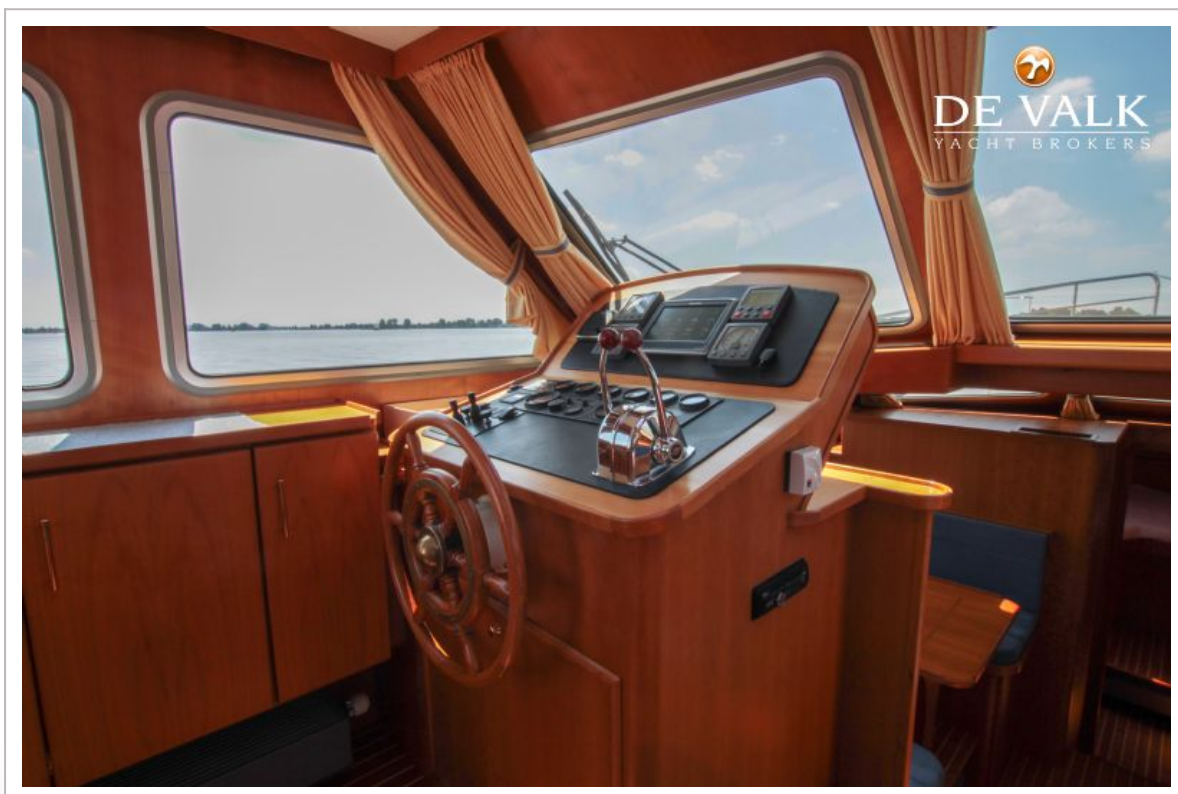
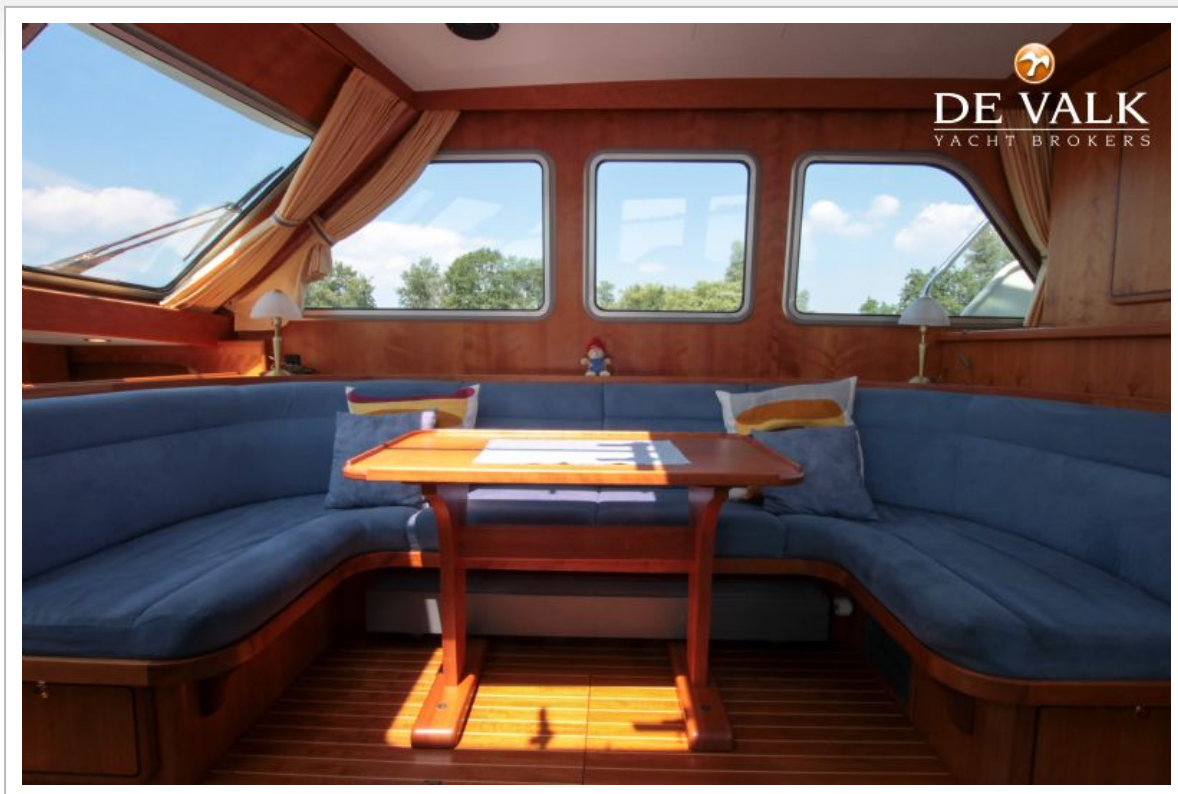
LINSSEN GRAND STURDY 470



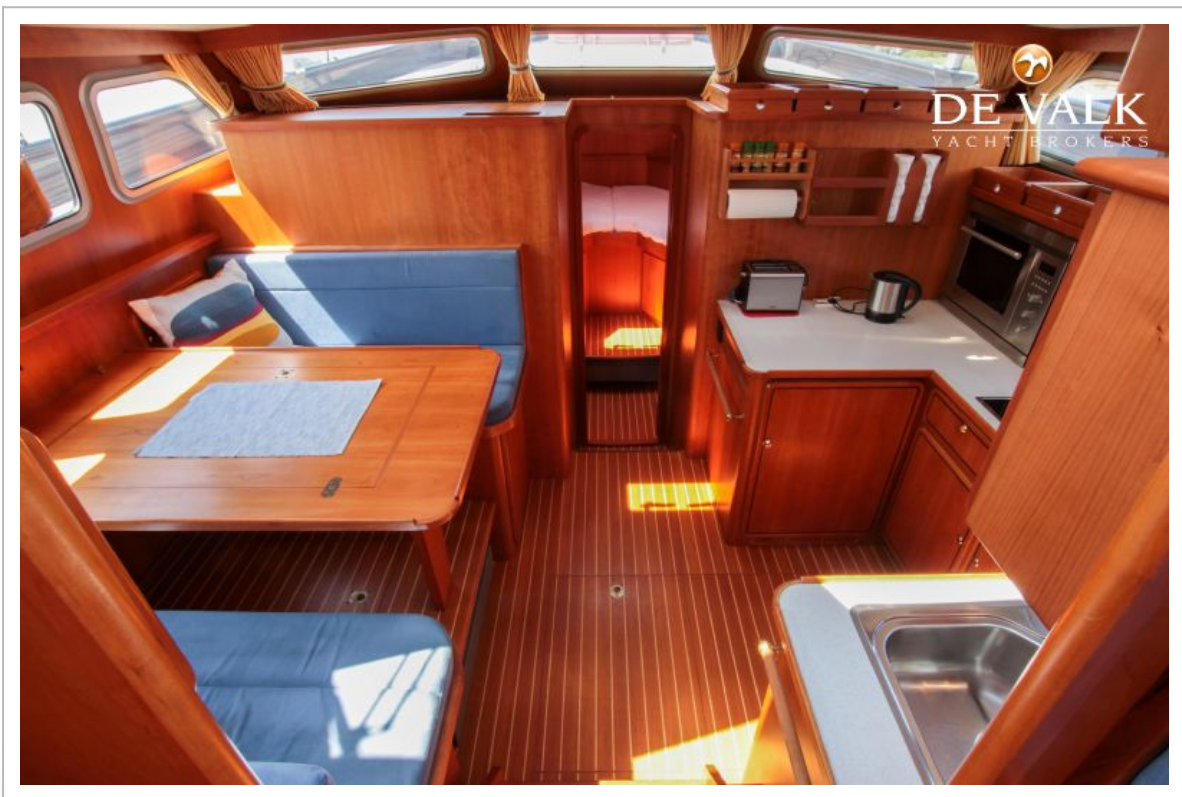
LINSSEN GRAND STURDY 470



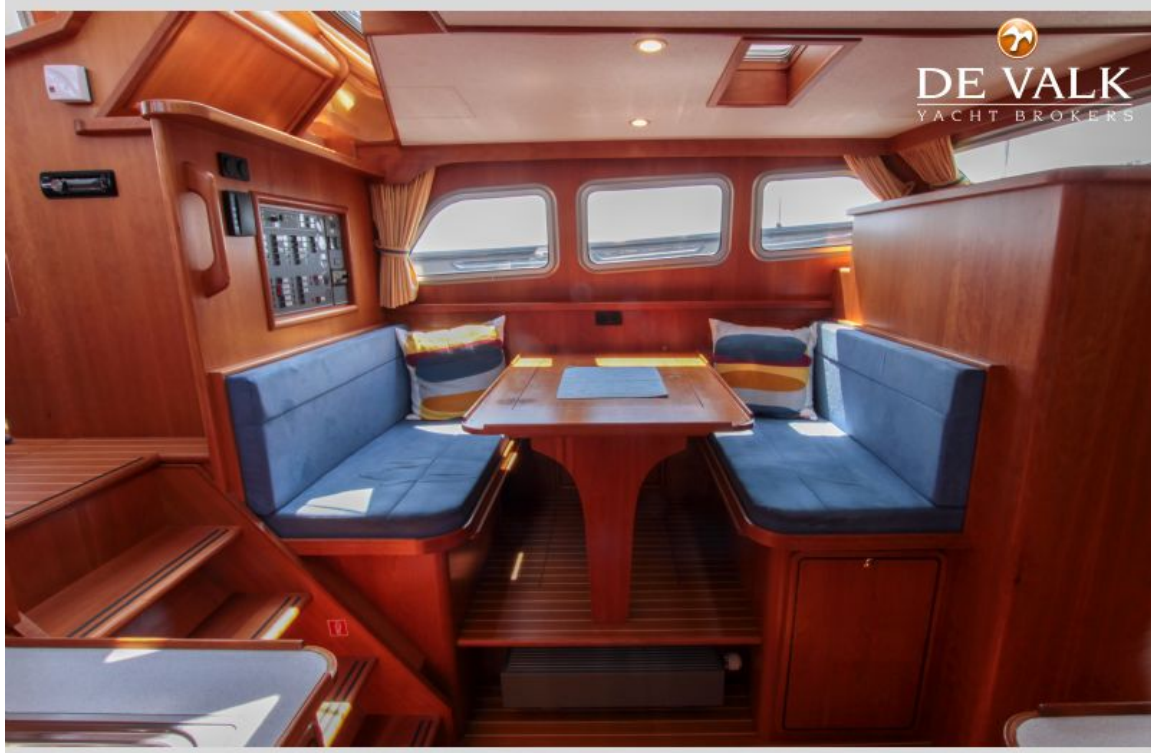
LINSSEN GRAND STURDY 470



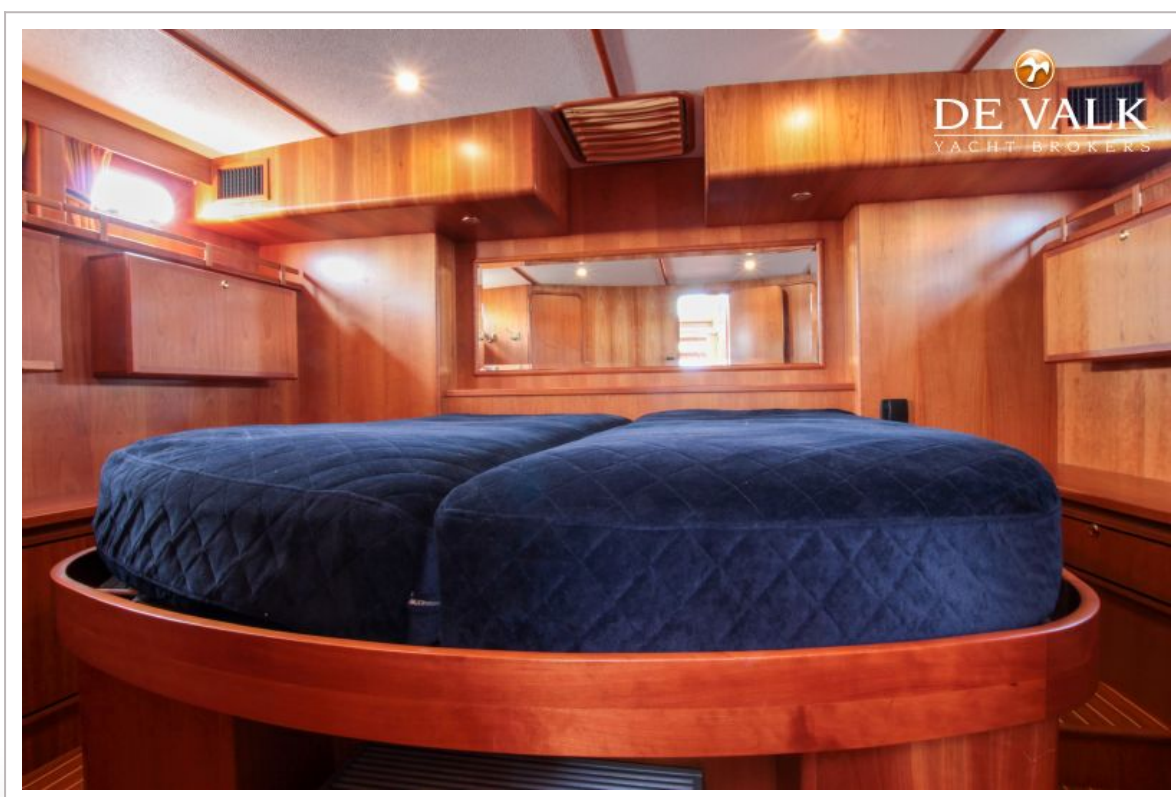
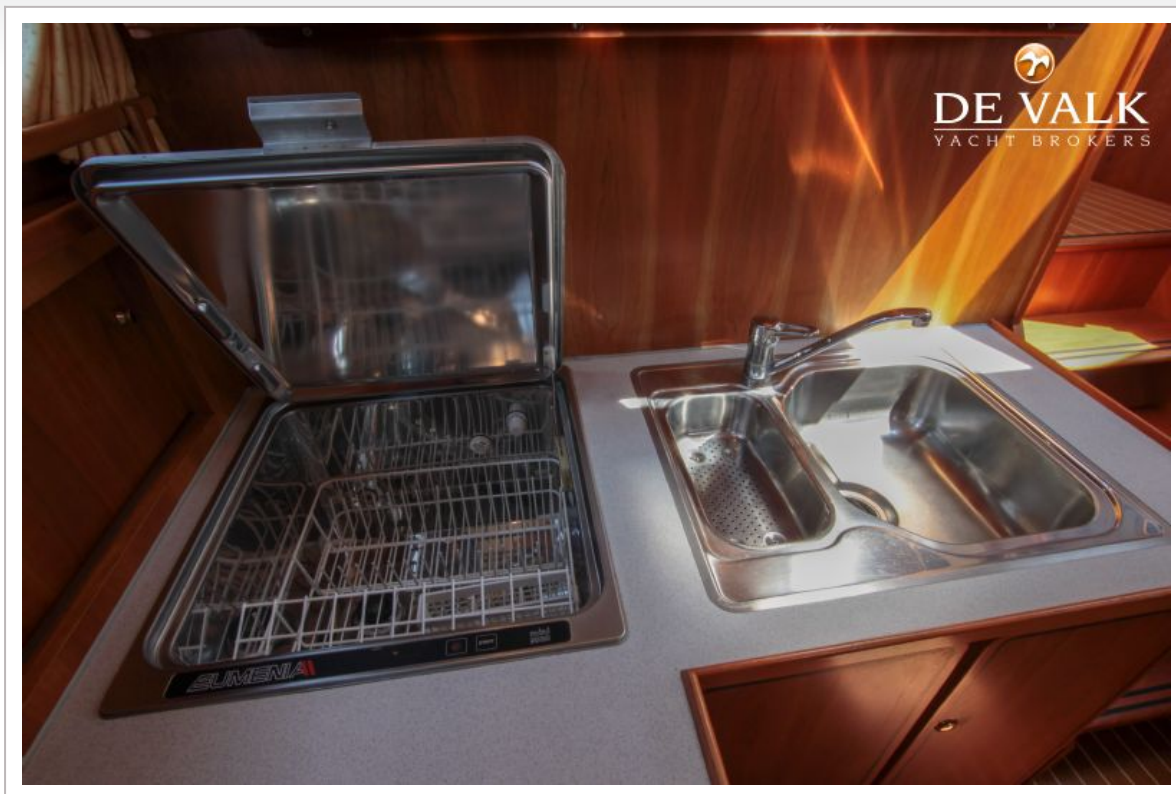
LINSSEN GRAND STURDY 470



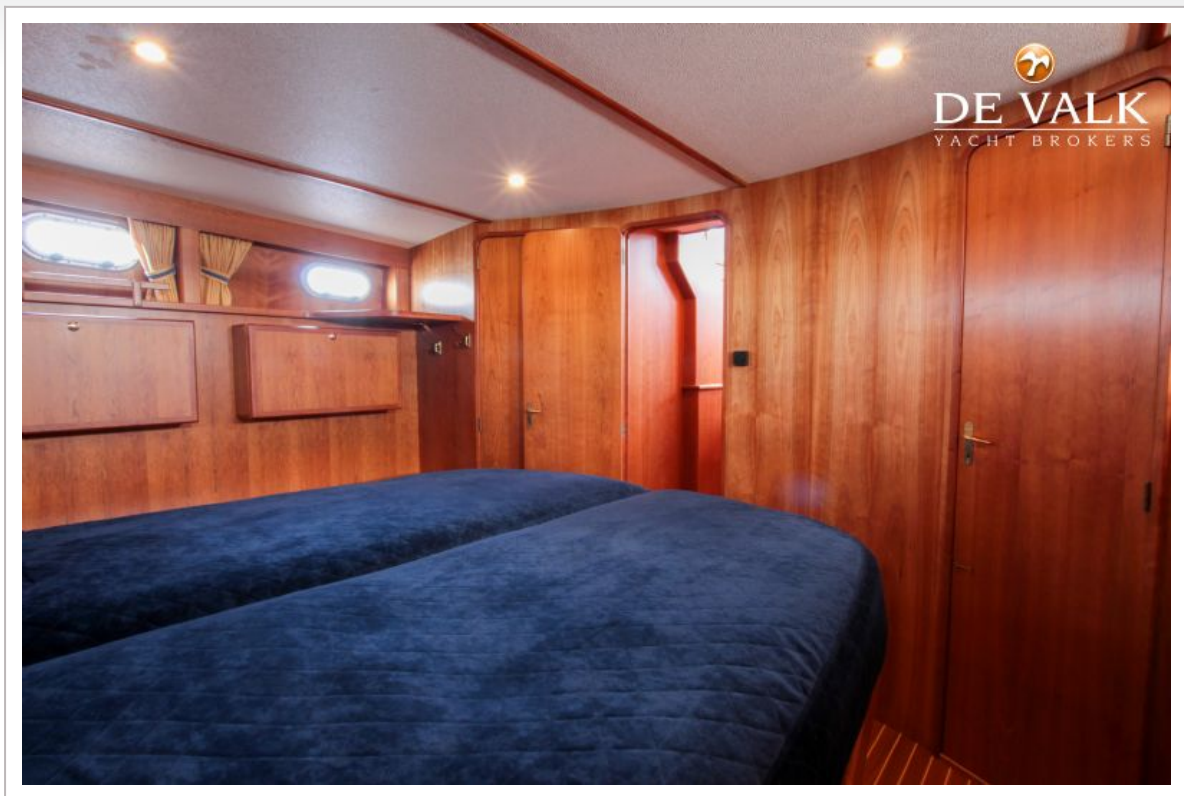
LINSSEN GRAND STURDY 470



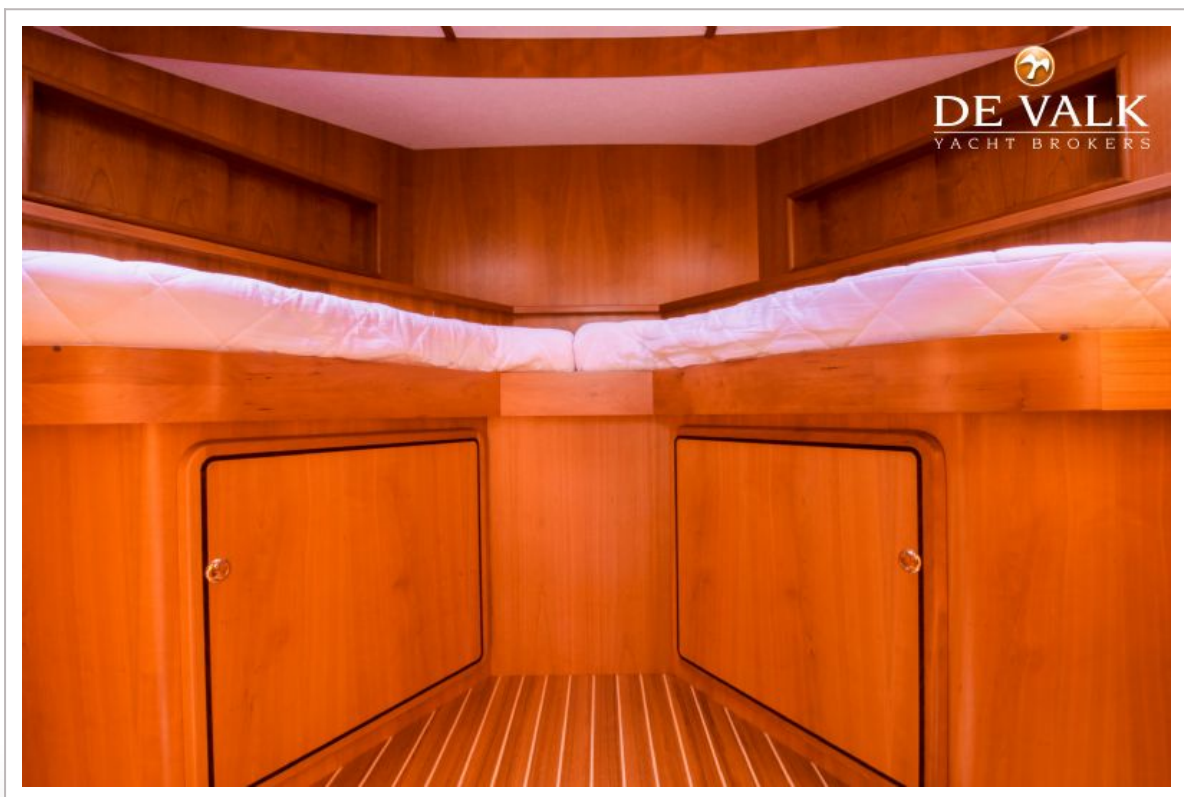
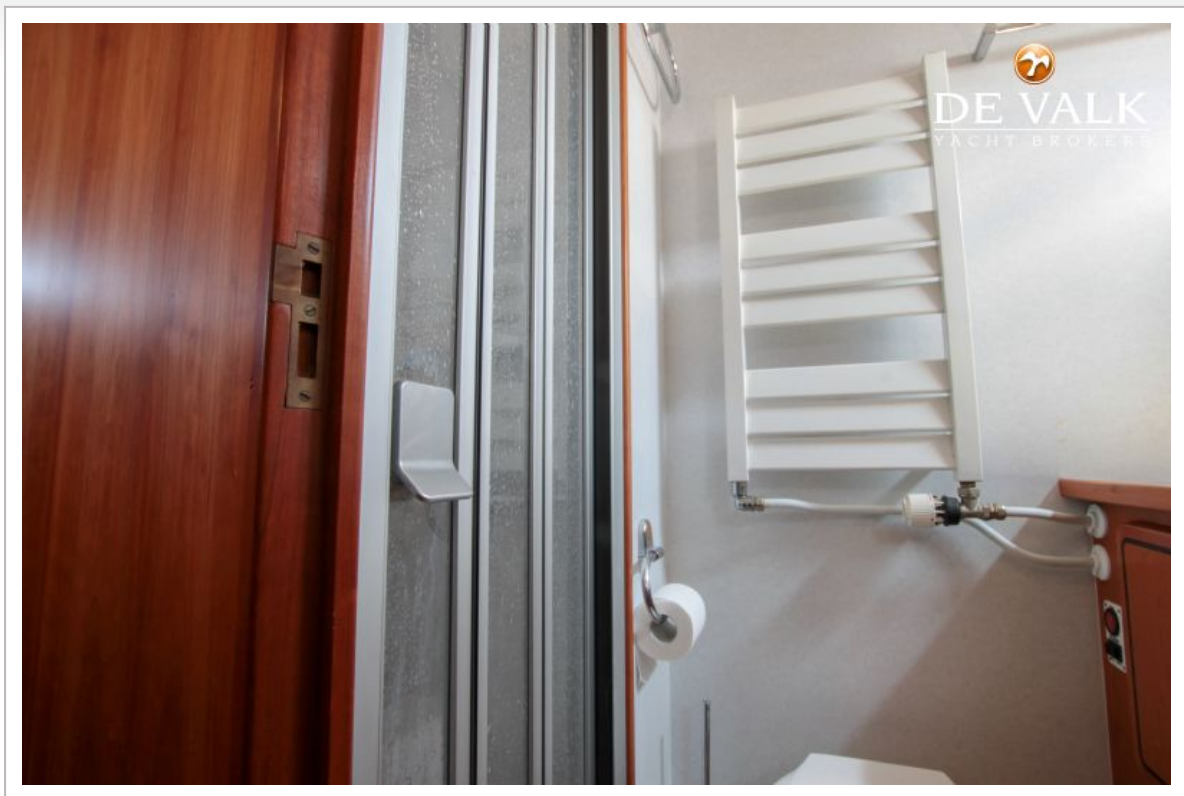
LINSSEN GRAND STURDY 470



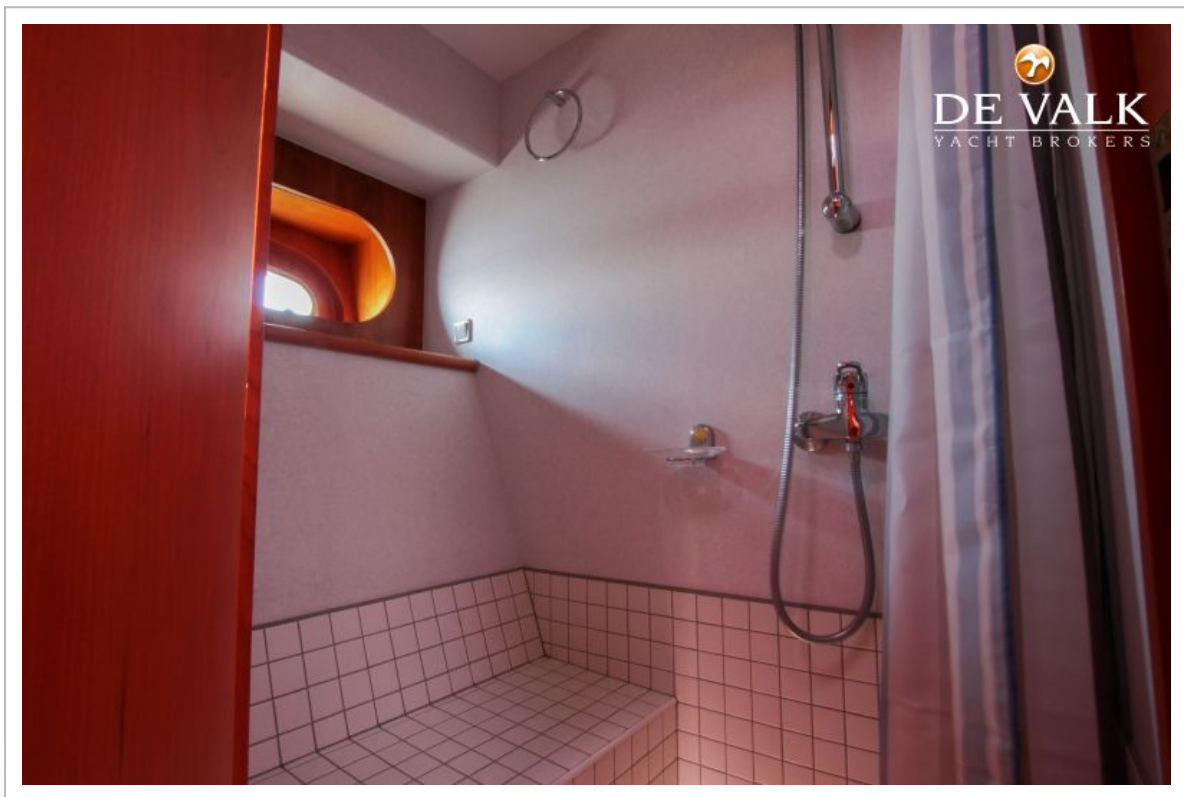
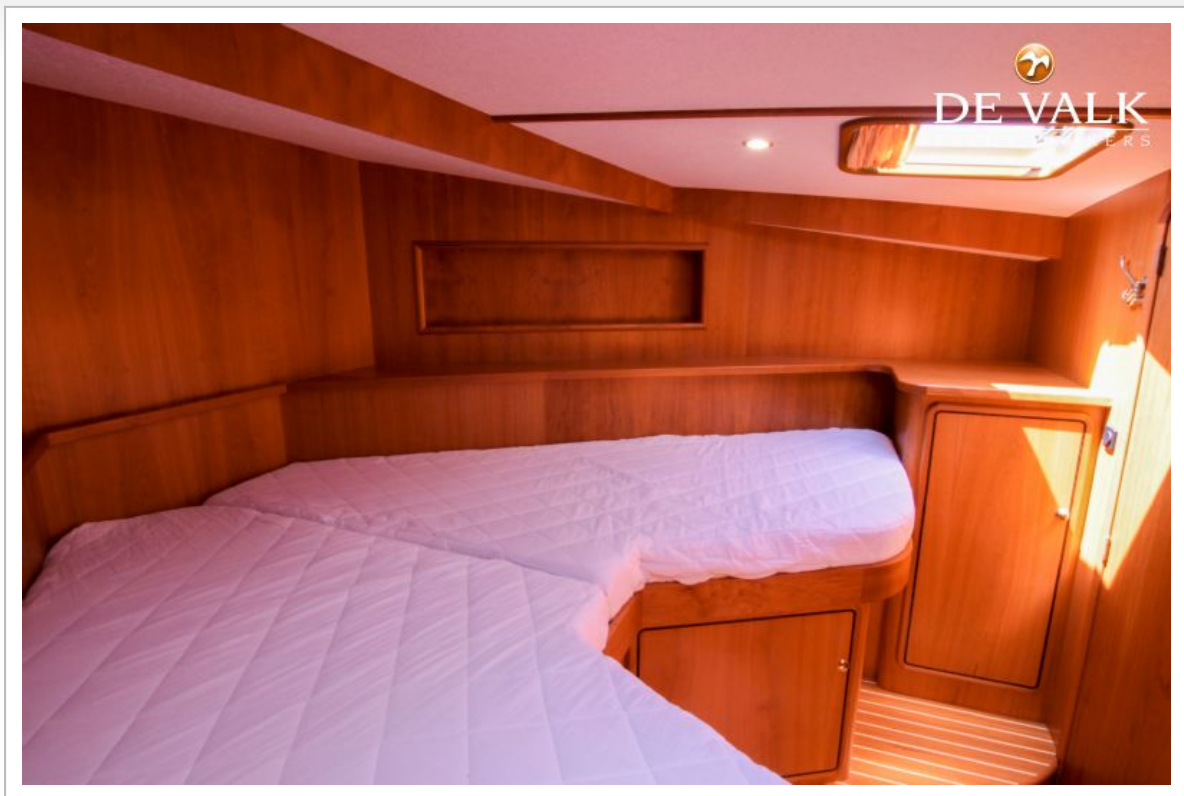
LINSSEN GRAND STURDY 470



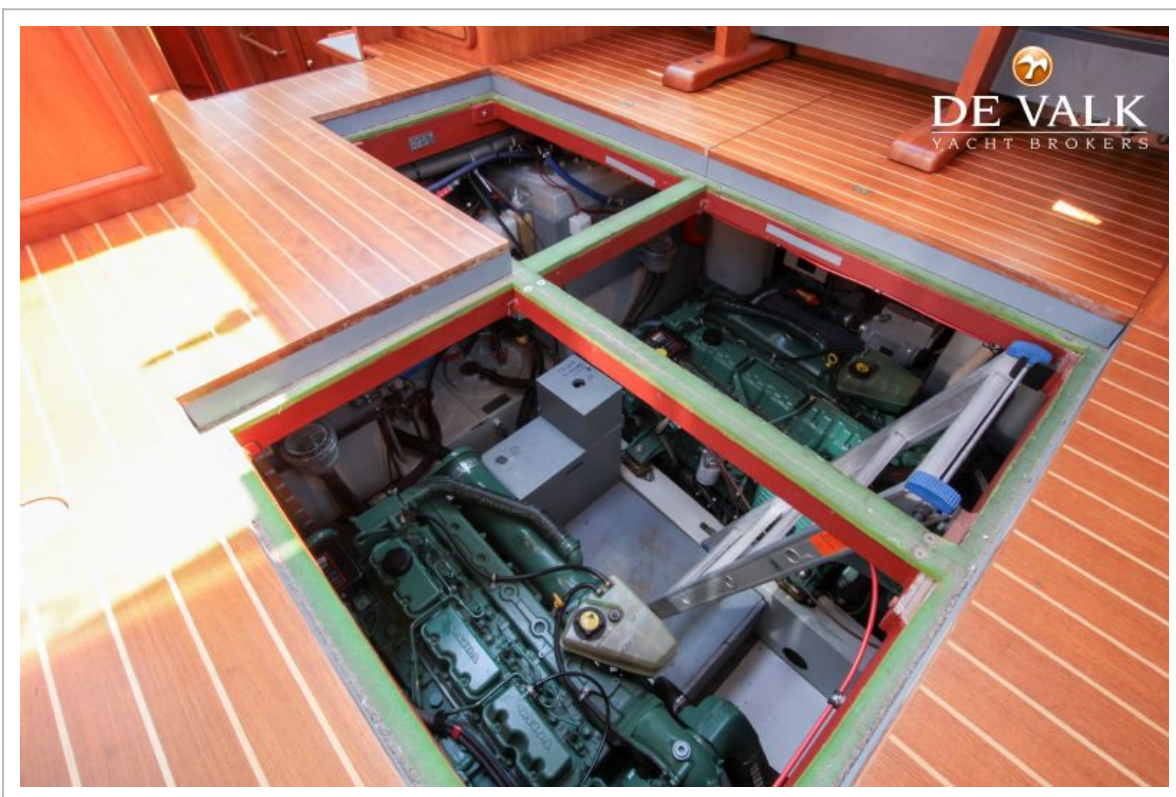
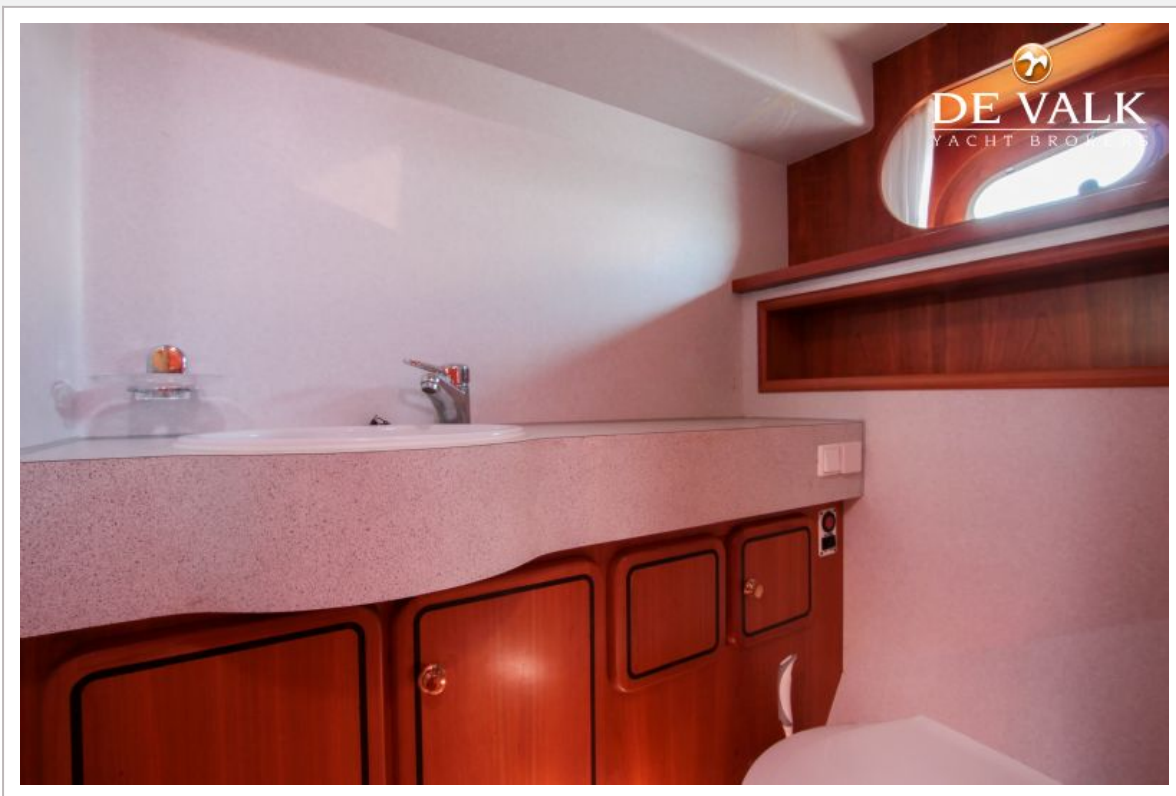
LINSSEN GRAND STURDY 470



LINSSEN GRAND STURDY 470



LINSSEN GRAND STURDY 470



LINSSEN GRAND STURDY 470

