



BRANDSMA VLET 1200 AK SP

BRANDSMA VLET 1200 AK SP

BROKER'S COMMENTS

"Passie" is a first owner Brandsmavlet which is always well maintained. The owner has opted for the SP version and lots of options . Equipped with a front and rear cabin, with private toilet and laundry,so you can provide your guests with suitable accommodation. If you are looking for a motor yacht in these dimensions with a CE: B certification, then this might be your new boat. . . Built in Sneek.

Pieter Bosma

SPECIFICATIONS

Dimensions	12.80 x 4.20 x 1.05 (m)	Builder	Brandsma Jachten b.v.
Built	2011	Cabins	2
Material	Steel	Berths	6
Engine(s)	1 x Steyr MO166K28 diesel	Hp/Kw	160.00 (hp), 117.60 (kw)
Asking price	sold (VAT)	Lying	at sales office

CONTACT

Sales office	De Valk Sneek	Telephone	+31 (0)515 42 80 30
Address	Zwolsmanweg 7 8606 KC Sneek NL	E-mail	sneek@devalk.nl

DISCLAIMER

These particulars are given in good faith as supplied but cannot be guaranteed.



GENERAL

Model	BRANDSMA VLET 1200 AK SP
Type	motor yacht
LOA (m)	12,80
Beam (m)	4,20
Draft (m)	1,05
Air draft min (m)	2,45
Headroom (m)	2,00
Year built	2011
Builder	Brandsma Jachten b.v.
Country	The Netherlands
Designer	Vripack
Displacement (t)	15
CE norm	B
Hull material	steel
Hull colour	grey
Hull shape	multi hard chine
Keel type	long keel
Superstructure material	steel
Rubbing strake	fender rope
Deck material	steel
Deck finish	non-skid paint Aftdeck: teak
Superstructure deck finish	paint
Antifouling (year)	2018
Window frame	aluminium
Window material	double glazing
Deckhatch	yes
Portholes	aluminium
Insulation	foam plates
Radar arch	collapsible
Fuel tank (litre)	670 ltr



Level indicator (fuel tank)	Wempe
Freshwater tank (litre)	stainless steel
Level indicator (freshwater)	Wempe
Blackwater tank (litre)	polyethylene
Level indicator (blackwater)	Wempe
Blackwater tank extraction	deck extraction + pump
Wheel steering	yes
Outside helm position	hydraulic
Emergency tiller	yes
More info on paintwork	Alexseal 2 component
Extra info	2 frontwindows can be opened
Extra info	yes

ACCOMMODATION

Cabins	2
Berths	6
Interior	cherry
Floor	teak and holly
Aft deck	yes
Saloon	yes
Headroom saloon (m)	2,00
Heating	diesel ducted hot air Webasto
Aft Cabin	yes
Dinette	yes
Opening door to cockpit	Teak
Galley	yes
Countertop	plastic
Sink	stainless steel
Cooker	ceramic 3 burner
Microwave/oven combi	Bosch
Fridge	cooling drawers 2 x Isotherm



BRANDSMA VLET 1200 AK SP

Hot water system	220V + engine 60 ltr boiler
Water pressure system	electrical
Dishwasher	Bosch
Kettle	yes
Coffee maker	yes
Owners cabin	French bed
Bed length (m)	2,00
Wardrobe	hanging/drawers/shelves
Bathroom	en suite
Toilet	separate
Toilet system	electric
Wash basin	in the bathroom
Shower	separate
Guest cabin 1	v-bed
Bed length (m)	2,10
Wardrobe	hanging and shelves
Bathroom	en suite
Toilet	yes
Toilet system	manual
Wash basin	at the toilet
Shower	yes
Washing machine/dryer combi	Indesit

MACHINERY

No of engines	1
Make	Steyr
Type	MO166K28
HP	160
kW	117,60
Fuel	diesel
Year installed	2011



BRANDSMA VLET 1200 AK SP

Maximum speed (kn)	9,5
Cruising speed (kn)	7,5
Consumption (l/hr)	6
Engine hours	980
Engine cooling system	freshwater heat exchanger
Drive	shaft
Shaft seal	yes
Engine controls	bowden cable
Gearbox	hydraulic
Bowthruster	electric 95 kgf
Sternthruster	electric 95 kgf
Exhaust	watercooled
Thrust bearing	yes
Propeller type	fixed
Propeller blades	4
Propeller shaft material	stainless steel
Shaft lubrication	water
Electric bilge pump	yes
Electrical installation	12/220V
Generator	wet exhaust Fisher Panda 60001
Batteries	yes
Start battery	yes
Service battery	yes
Generator battery	yes
Sternthruster battery	165 Ah
Battery monitor	Victrom BMV600S
Battery charger/inverter	Victron Quatro 3000W
Diode battery combiners	yes
Shorepower	with cable
Extra info	remote control for bow and stern thruster



NAVIGATION

Compass	In plotter screen
Depth sounder	In plotterscreen
Depth sounder/log	Raymarine Bidata
Log	In plotterscreen
VHF	Garmin VHF300
Autopilot	with remote control Raymarine ST6002
Rudder angle indicator	in the Autopilot
Plotter/GPS	Raymarine C80
Electronic chart(s)	yes
Navigation lights	yes
Searchlight	yes

EQUIPMENT

Fixed windscreen	yes
Cockpit cover	yes
Winter cover	yes
Cockpit cushions	yes
Cockpit table	with storage for folding bike inside 2x for 8 persons
Bathing platform	with teak
Boarding ladder	stainless steel
Transom door	yes
Deck shower	yes
Anchor	Pool
Anchor chain	yes
Windlass	manual
Davits	stainless steel
Davits controls	manual
Sea railing	stainless steel
Grab rail (superstructure)	yes
Life raft	4x



Lifebuoy	yes
Wiper	3x
Window ventilator	yes
Horn	electric
Fenders	with corbes
Mooring lines	yes
Spare parts	yes
Tools	yes
TV	in salon with electric lift 2x
TV receiver	Digitenne
Radio-cd player	yes
iPod connection	yes
Cockpit speakers	yes
Speakers in salon	yes
Clock - barometer	yes
Fire extinguisher	yes
Extinguisher in engine room	yes



BRANDSMA VLET 1200 AK SP



BRANDSMA VLET 1200 AK SP



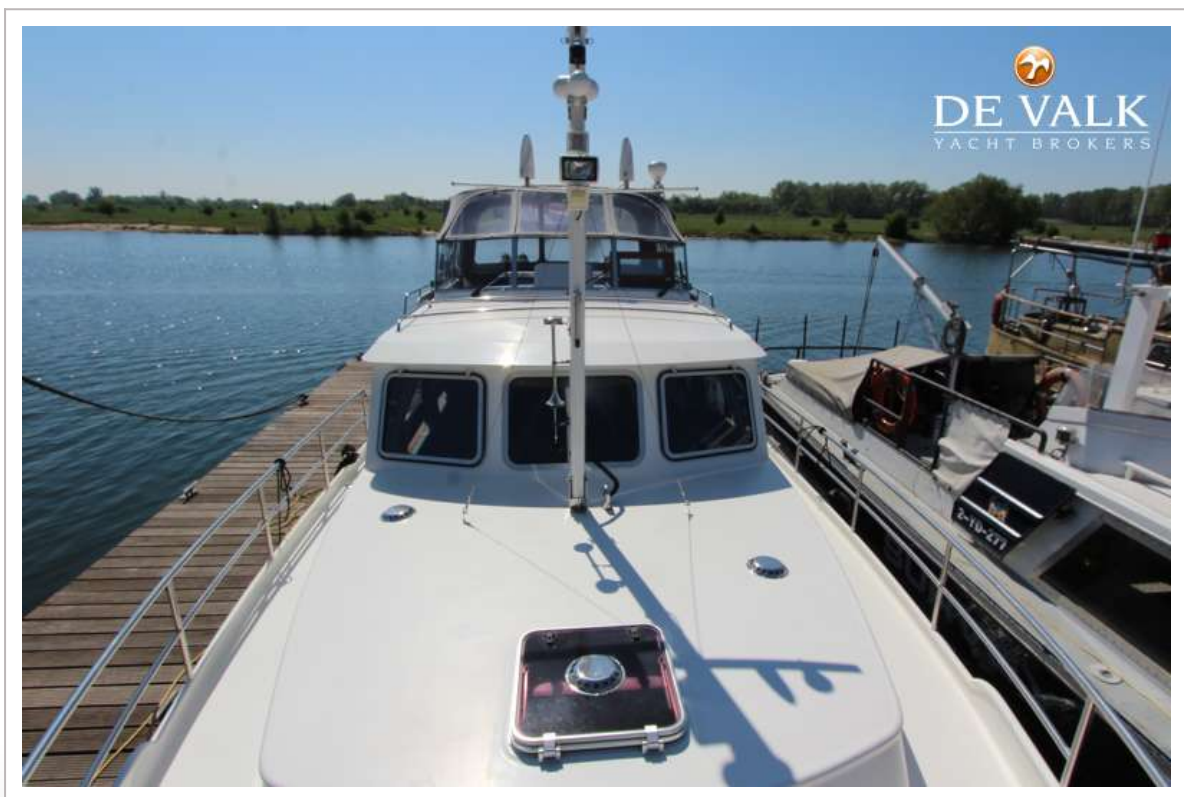
BRANDSMA VLET 1200 AK SP



BRANDSMA VLET 1200 AK SP







BRANDSMA VLET 1200 AK SP



BRANDSMA VLET 1200 AK SP

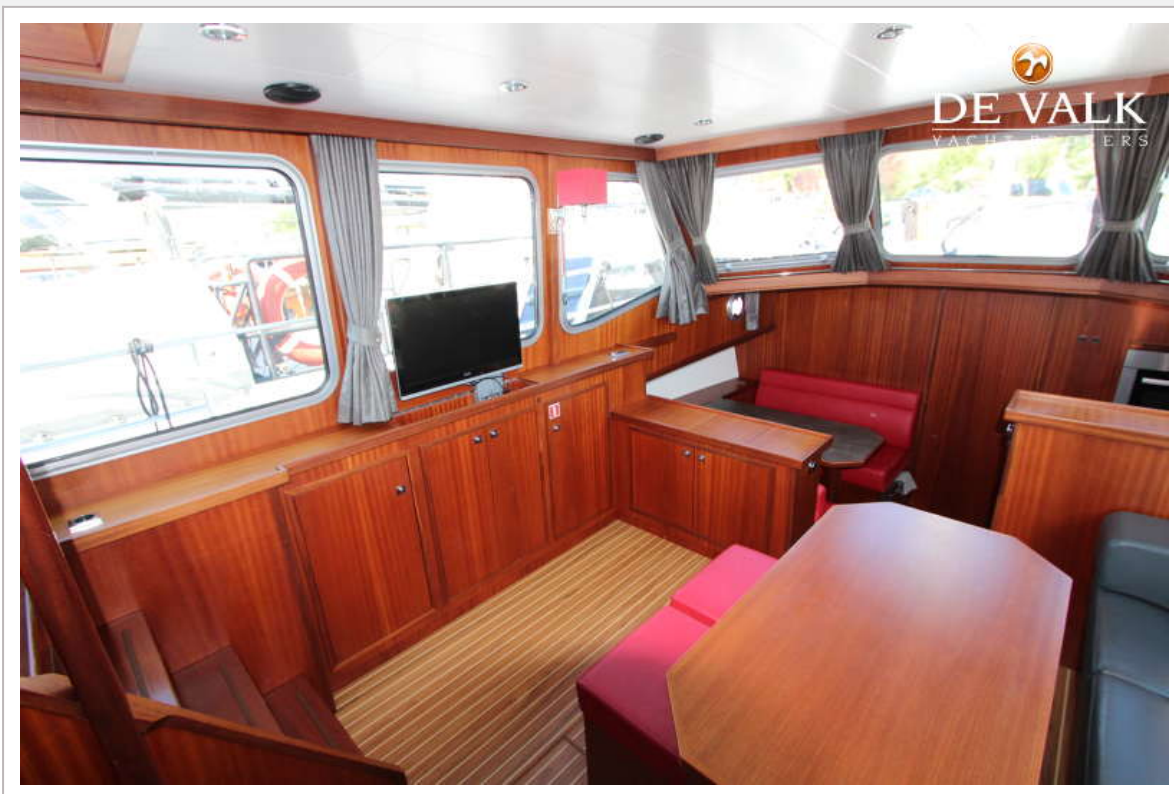




BRANDSMA VLET 1200 AK SP



BRANDSMA VLET 1200 AK SP



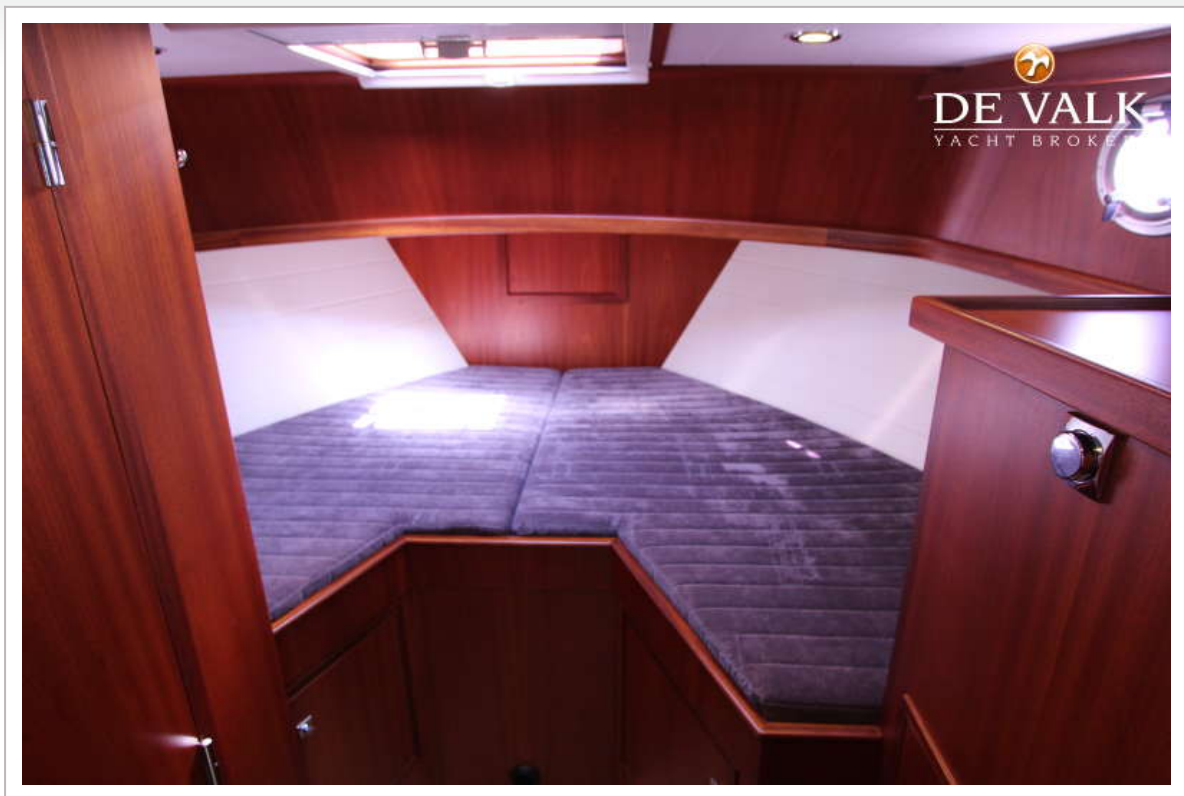
BRANDSMA VLET 1200 AK SP

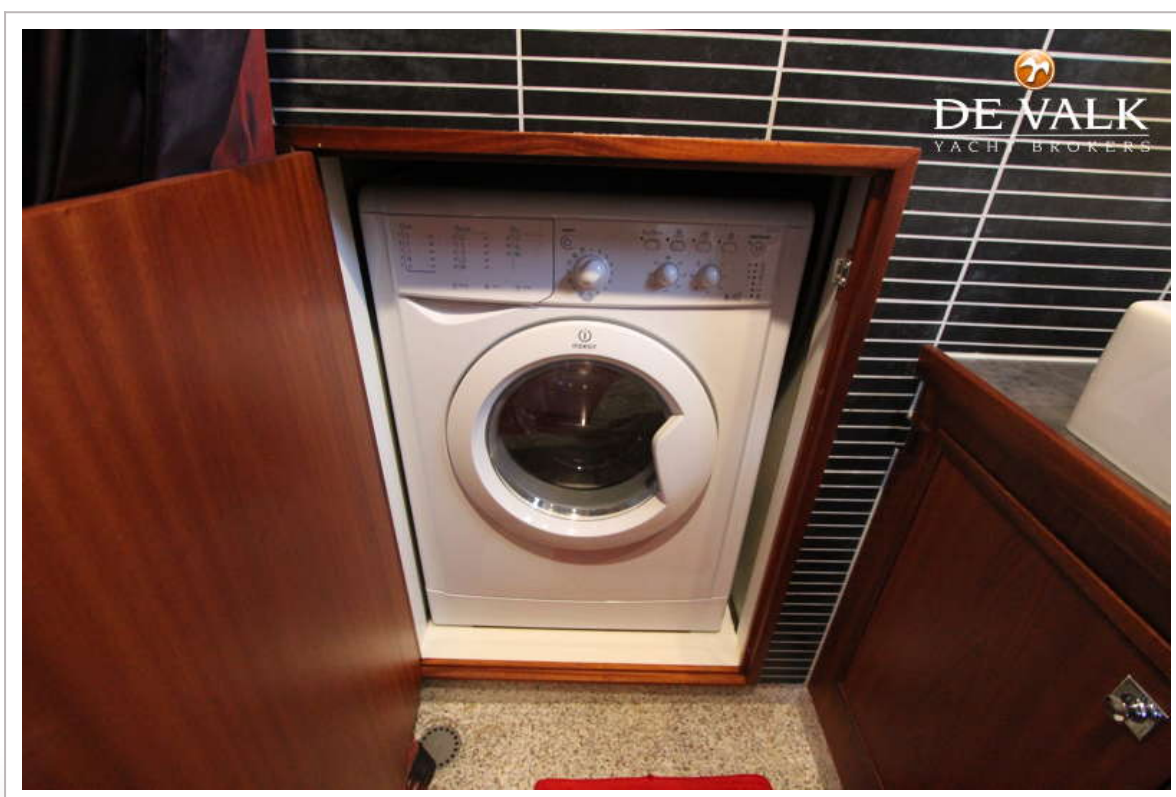
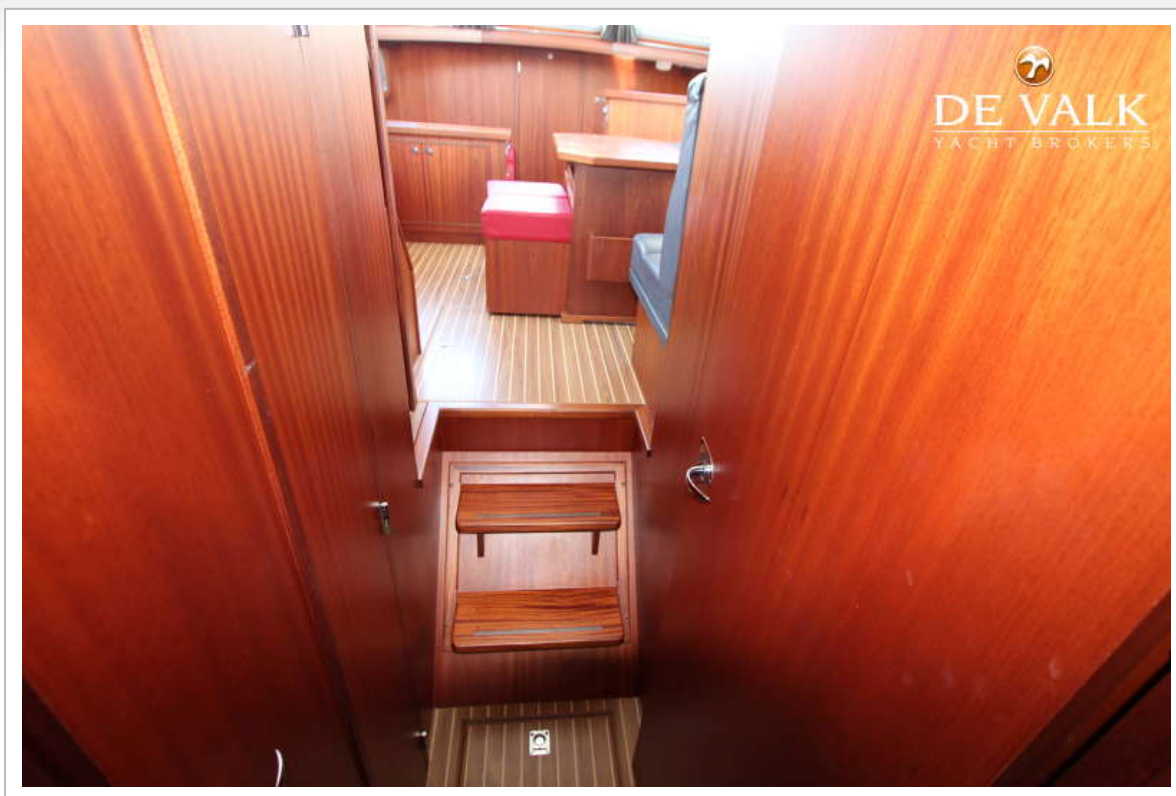


BRANDSMA VLET 1200 AK SP











BRANDSMA VLET 1200 AK SP



