



DE VALK
YACHT BROKERS



ALMKOTTER 1330 AK



DE VALK
YACHT BROKERS

BROKERAGE | CHARTER | BERTHS | FINANCE | INSURANCE | YACHT MANAGEMENT

ALMKOTTER 1330 AK

BROKER'S COMMENTS

This Almspiegel Kotter 13.30 AK measures more than 14 meters and, given its complete equipment level, is extremely suitable for permanent occupation. Well insulated, double glazed, central heating, air conditioning (2 units) a spacious lounge area and so on. A well-built motor yacht that lets you go away right away. Both exterior and interior are in an above average state. The hull was sprayed in 2017, in a really beautiful dark brown metallic lacquer. If you are looking for a motor yacht (CE: B certified) in these dimensions, you should really have to take a look at this motoryacht

Henk de Vries

SPECIFICATIONS

| | | | |
|---------------------|----------------------------------|----------------|--------------------------------|
| Dimensions | 14.20 x 4.35 x 1.27 (m) | Builder | Jacht-en scheepsbouw De Alm BV |
| Built | 2001 | Cabins | 3 |
| Material | Steel | Berths | 6 |
| Engine(s) | 1 x Perkins M185C 2100rpm diesel | Hp/Kw | 183.00 (hp), 134.51 (kw) |
| Asking price | sold (VAT) | Lying | at sales office |

CONTACT

| | | | |
|---------------------|--------------------------------------|------------------|---------------------|
| Sales office | De Valk Sneek | Telephone | +31 (0)515 42 80 30 |
| Address | Zwolsmanweg 7 8606 KC Sneek NL | E-mail | sneek@devalk.nl |

DISCLAIMER

These particulars are given in good faith as supplied but cannot be guaranteed.



GENERAL

| | |
|----------------------------|--------------------------------|
| Model | ALMKOTTER 1330 AK |
| Type | motor yacht |
| LOA (m) | 14,20 |
| Beam (m) | 4,35 |
| Draft (m) | 1,27 |
| Air draft (m) | 6,85 |
| Air draft min (m) | 2,95 |
| Headroom (m) | 2,05 |
| Year built | 2001 |
| Builder | Jacht-en scheepsbouw De Alm BV |
| Country | The Netherlands |
| Designer | O. Brinksma |
| Displacement (t) | 28 |
| CE norm | B |
| Hull material | steel |
| Hull colour | brown Metallic |
| Hull thickness (mm) | 5 |
| Hull shape | multi hard chine |
| Superstructure material | steel |
| Superstructure (mm) | 4 |
| Deck plate thickness (mm) | 4 |
| Rubbing strake | rubber |
| Deck material | steel |
| Deck finish | teak |
| Superstructure deck finish | paint |
| Cockpit deck finish | teak |
| Antifouling (year) | 2017 |
| Dorades | yes |
| Window frame | aluminium RHIGO |
| Window material | double glazing |



ALMKOTTER 1330 AK

| | |
|------------------------------|------------------------|
| Deckhatch | GEBO |
| Portholes | aluminium GEBO |
| Insulation | rockwool |
| Mast can be lowered | electric |
| Fuel tank (litre) | steel 1.500 |
| Level indicator (fuel tank) | yes |
| Freshwater tank (litre) | stainless steel 2x 550 |
| Level indicator (freshwater) | yes |
| Blackwater tank (litre) | stainless steel 350 |
| Level indicator (blackwater) | yes |
| Blackwater tank extraction | deck extraction + pump |
| Wheel steering | hydraulic |
| Outside helm position | yes |
| More info on paintwork | Hull painted 2017 |

ACCOMMODATION

| | |
|--------------------------|---|
| Cabins | 3 |
| Berths | 6 |
| Interior | teak |
| Floor | teak and holly |
| Aft deck | yes |
| Deck saloon | yes |
| Saloon | yes |
| Headroom saloon (m) | 2,5 |
| Heating | central heating Kabola B12TAP |
| Air-conditioning | single cycle airco Frigomar (Marine Airconditioning Systems) 2 units |
| Chart table | yes |
| Aft Cabin | yes |
| Opening door to aft deck | yes |
| Galley | yes |



| | |
|-----------------------------|-------------------------|
| Countertop | corian |
| Sink | stainless steel |
| Cooker | ceramic Pelgrim 4 pits |
| Extractor | Pelgrim |
| Microwave/oven combi | Whirlpool |
| Fridge | Zanker 156 liter |
| Freezer | Liebherr |
| Hot water system | on central heating |
| Water pressure system | electrical |
| Owners cabin | French bed |
| Bed length (m) | 2,0 |
| Wardrobe | hanging/drawers/shelves |
| Bathroom | en suite |
| Toilet | en suite |
| Toilet system | electric |
| Wash basin | in the bathroom |
| Shower | en suite |
| Guest cabin 1 | v-bed |
| Bed length (m) | 2,0 |
| Wardrobe | hanging and drawers |
| Bathroom | shared |
| Toilet | shared |
| Toilet system | electric |
| Wash basin | in the bathroom |
| Shower | shared |
| Guest cabin 2 | bunk bed |
| Bed length (m) | 2,0 |
| Wardrobe | drawers |
| Bathroom | shared |
| Toilet | shared |
| Washing machine/dryer combi | Candy |



MACHINERY

| | |
|--------------------------|------------------------------------|
| No of engines | 1 |
| Make | Perkins |
| Type | M185C 2100rpm |
| HP | 183,00 |
| kW | 134,51 |
| Fuel | diesel |
| Year installed | 2001 |
| Maximum speed (kn) | 8kn |
| Cruising speed (kn) | 6 |
| Consumption (l/hr) | 7,5 |
| Engine hours | 1926 |
| Engine cooling system | freshwater heat exchanger |
| Drive | shaft |
| Shaft seal | yes |
| Engine controls | mechanical |
| Gearbox | hydraulic Twin Disc 50-50 |
| Bowthruster | electric Max Power 110 duo (11pk) |
| Exhaust | watercooled |
| Thrust bearing | Python |
| Propeller type | fixed |
| Propeller blades | 4 (25"X27") |
| Propeller shaft material | stainless steel 50mm |
| Shaft lubrication | water |
| Electric bilge pump | JABSCO |
| Electrical installation | 12V / 24V / 220V |
| Generator | wet exhaust Kohler 8 Kva /1.500rpm |
| Batteries | 6 |
| Start battery | 2 |
| Service battery | 2 |
| Generator battery | 1 |



| | |
|-------------------------|-------------------------------|
| Bowthruster battery | 1 |
| Battery monitor | MasterVolt |
| Battery charger | MasterVolt |
| Inverter | MasterVolt Sine Wave Inverter |
| Diode battery combiners | yes |
| Shorepower | with cable |
| Insulation transformer | yes |

NAVIGATION

| | |
|------------------------|------------------------------|
| Electric compass | Raytheon ST60 |
| Depth sounder/log | Raytheon Tridata ST60 |
| VHF | Shipmate 8300 |
| Autopilot | Raytheon ST9000+ |
| Rudder angle indicator | Raytheon ST60 |
| Radar/GPS/plotter | Raytheon (radar not working) |
| Navigation lights | yes |

EQUIPMENT

| | |
|----------------------------|----------------------------------|
| Sprayhood | yes |
| Bimini | yes |
| Bathing platform | yes |
| Boarding ladder | stainless steel |
| Deck shower | yes |
| Anchor | Pool |
| Anchor chain | yes |
| Windlass | electrical Vetus ALEX III |
| Deck wash | yes |
| Davits | stainless steel |
| Davits controls | electrical Met afstandsbediening |
| Sea railing | stainless steel |
| Grab rail (superstructure) | stainless steel |



ALMKOTTER 1330 AK

| | |
|----------------------------|--------------------|
| Railing side opening gates | yes |
| Wiper | 3X |
| Horn | electric |
| Fenders | yes |
| Mooring lines | yes |
| TV | Samsung Flatscreen |
| TV receiver | Glomex TV Antenna |
| Radio-cd player | Sony CM1CP21 |
| Speakers in salon | yes |
| Clock - barometer | yes |
| Fire extinguisher | yes |



ALMKOTTER 1330 AK



ALMKOTTER 1330 AK



ALMKOTTER 1330 AK



ALMKOTTER 1330 AK



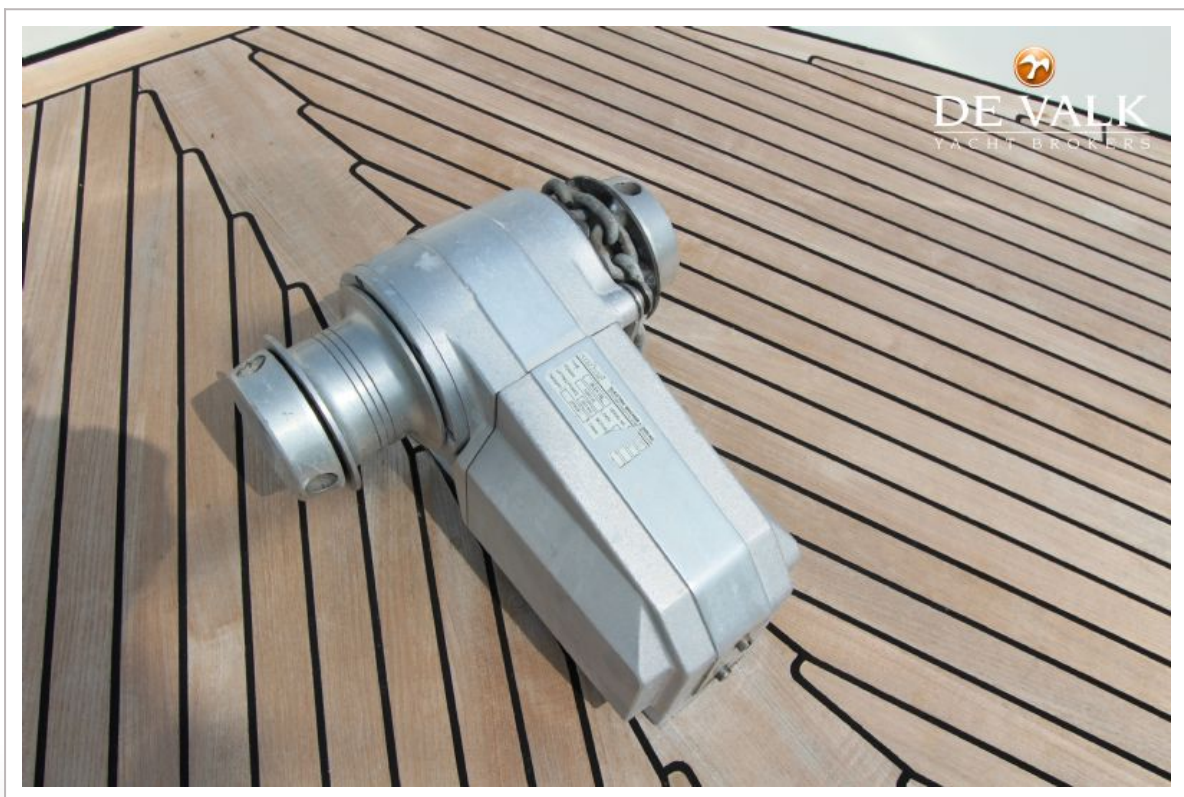
ALMKOTTER 1330 AK



ALMKOTTER 1330 AK



ALMKOTTER 1330 AK



ALMKOTTER 1330 AK



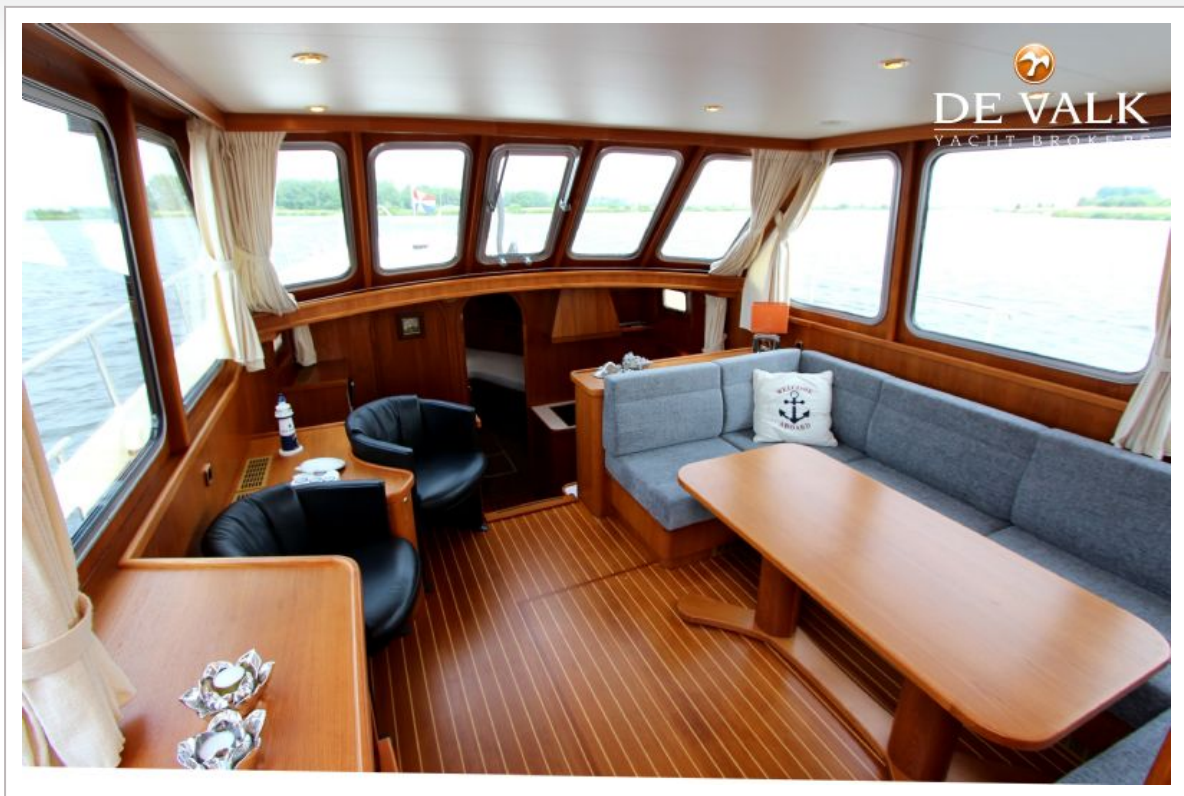
ALMKOTTER 1330 AK



ALMKOTTER 1330 AK



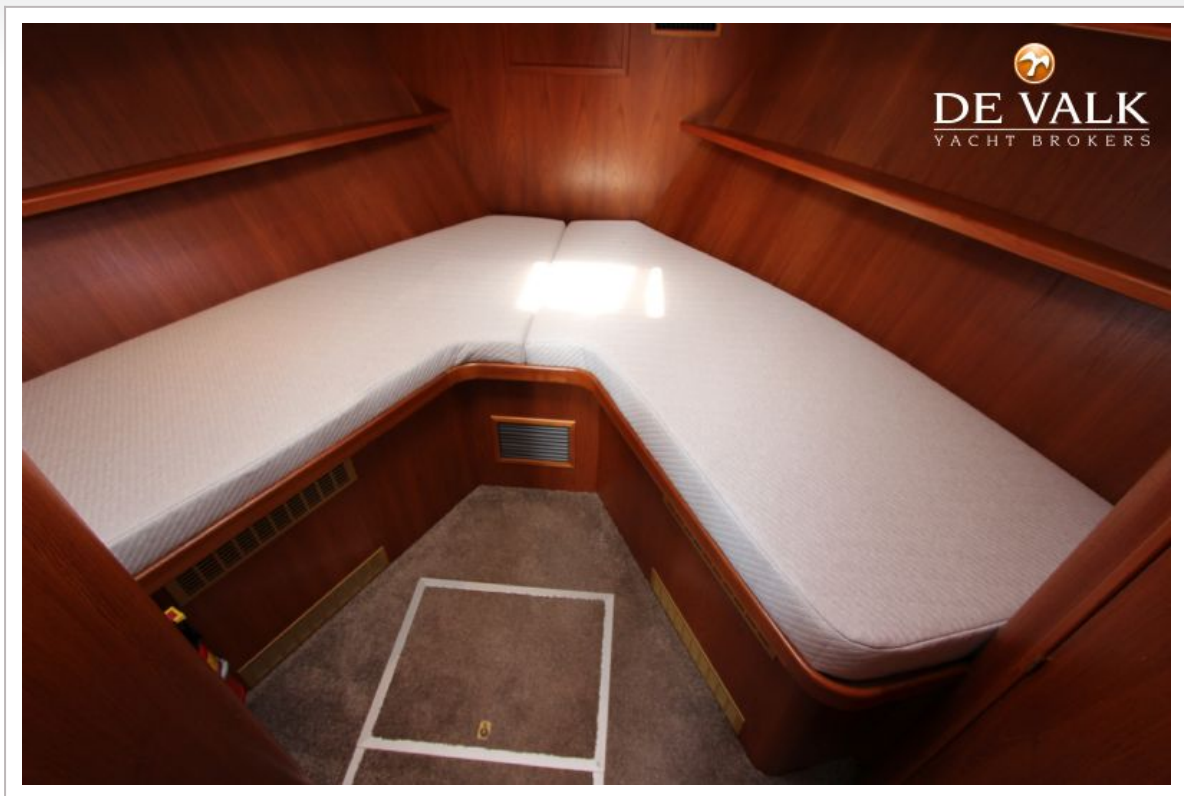
ALMKOTTER 1330 AK



ALMKOTTER 1330 AK



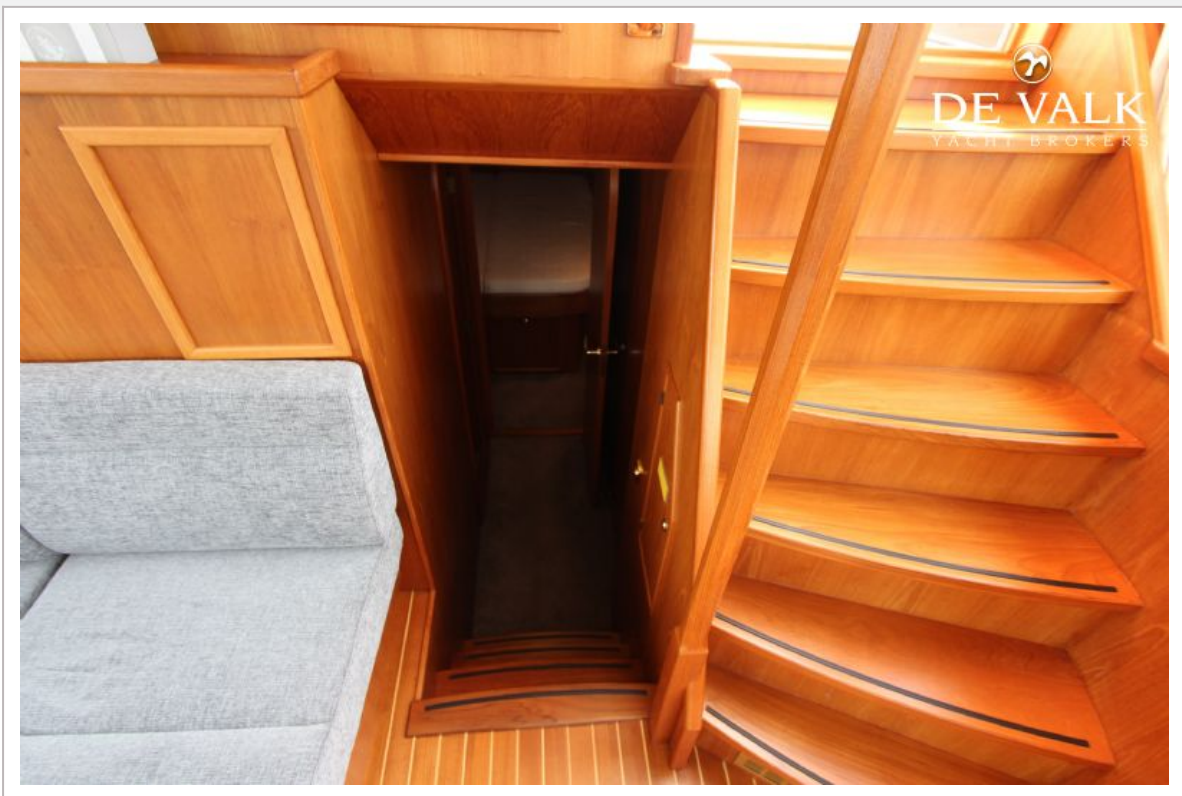
ALMKOTTER 1330 AK



ALMKOTTER 1330 AK



ALMKOTTER 1330 AK



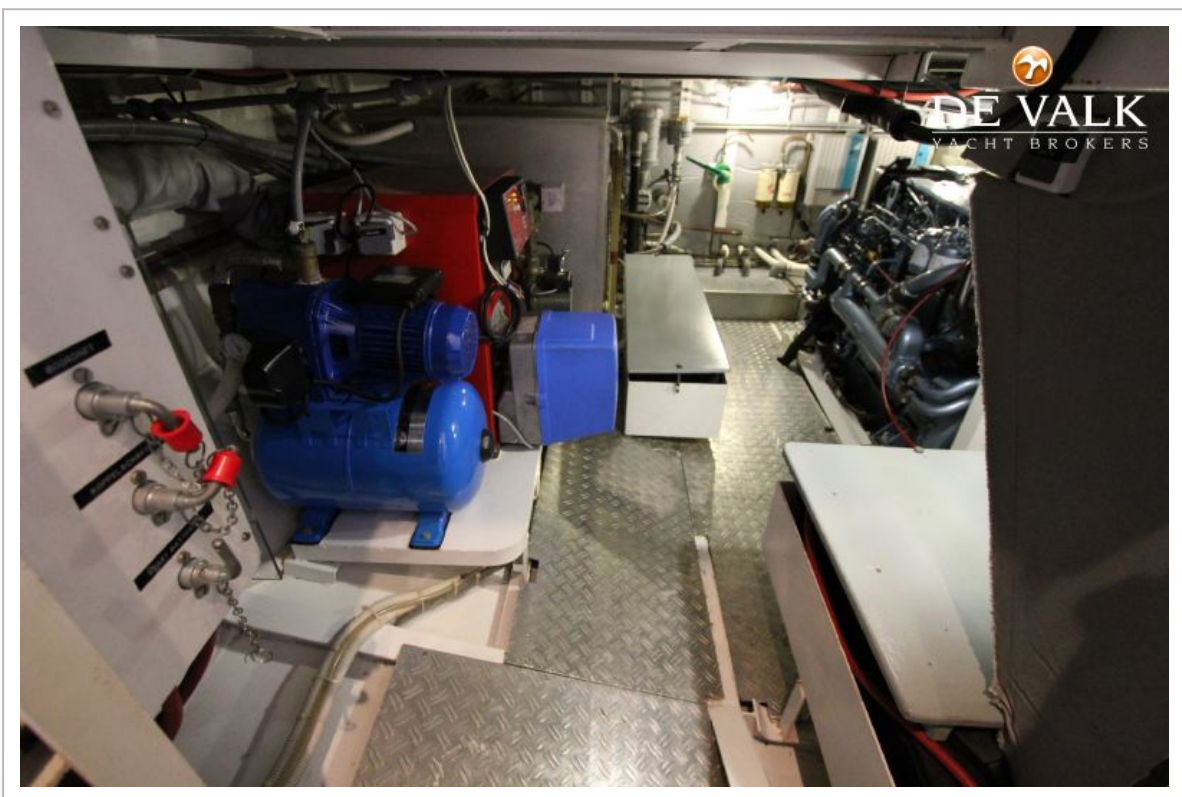
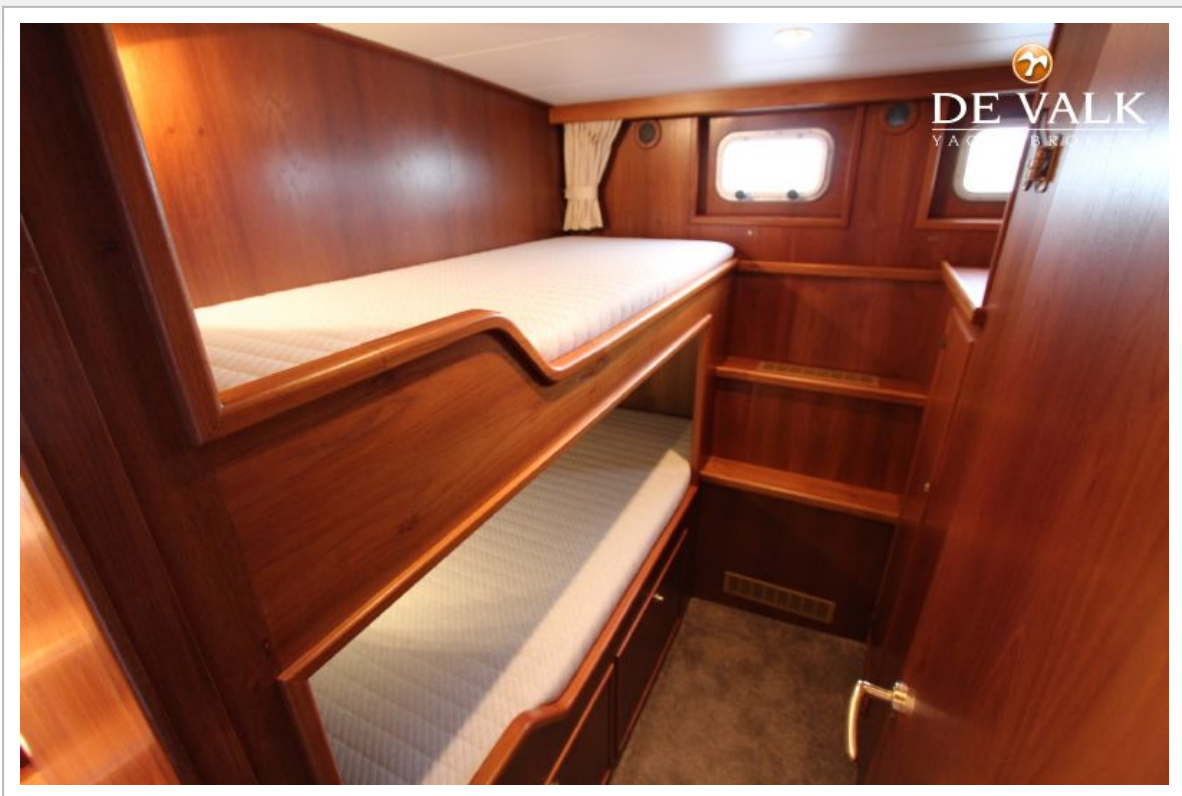
ALMKOTTER 1330 AK



ALMKOTTER 1330 AK



ALMKOTTER 1330 AK



ALMKOTTER 1330 AK

