



KING TRAWLER 39

KING TRAWLER 39

BROKER'S COMMENTS

New on the market for sale: this very well-maintained King Trawler 39! The current third owner has owned her for over 20 years. What immediately stands out is the incredibly spacious aft cabin. In addition, the ship is equipped with all comforts, such as central heating with radiators, a generator, and a spacious salon. This King Trawler is powered by two powerful Volvo Penta engines. Combined with the electric bow and stern thrusters, this makes it a very easy vessel to maneuver. She is available for immediate viewing in our sales marina.

Mark Hesselmans

SPECIFICATIONS

Dimensions	13.50 x 4.20 x 1.10 (m)	Builder	
Built	1988	Cabins	2
Material	GRP	Berths	4
Engine(s)	2 x Volvo-Penta diesel	Hp/Kw	2 x 200.00 (hp), 147.00 (kw)
Asking price	sold (VAT)	Lying	at sales office

CONTACT

Sales office	De Valk Loosdrecht B.V.	Telephone	+31 (0)35 582 90 30
Address	't Breukeleveense Meentje 6 1231LM Loosdrecht / Wijdmeren NL	E-mail	loosdrecht@devalk.nl

DISCLAIMER

These particulars are given in good faith as supplied but cannot be guaranteed.



GENERAL

Model	KING TRAWLER 39
Type	motor yacht
LOA (m)	13,50
Beam (m)	4,20
Draft (m)	1,10
Headroom (m)	2,00
Year built	1988
Hull material	GRP
Hull colour	white
Hull shape	V-shaped hull
Superstructure material	GRP
Rubbing strake	stainless steel
Deck material	GRP
Deck finish	teak
Superstructure deck finish	teak
Cockpit deck finish	teak
Antifouling (year)	Winter 2024
Window frame	wood
Window material	tempered glass
Deckhatch	yes
Portholes	stainless steel 13x
Flybridge	yes
Flybridge cover	yes
Flybridge cockpit cover	yes
Radar arch	collapsible
Fuel tank (litre)	2x 1100 L
Level indicator (fuel tank)	yes
Freshwater tank (litre)	900 L
Wheel steering	hydraulic
Inside helm position	yes



Flybridge helm position hydraulic

ACCOMMODATION

Cabins	2
Berths	4
Interior	teak
Floor	teak
Aft deck	yes
Headroom saloon (m)	2,00 m
Heating	central heating Eberspacher
Aft Cabin	yes
Dinette	yes
Opening door to aft deck	yes
Galley	yes
Countertop	plastic
Sink	stainless steel
Cooker	calor gas 4 pits
Oven	Bestron
Fridge	Isotherm + kinsman on flybridge
Hot water system	220V
Water pressure system	electrical
Owners cabin	double bed
Bed length (m)	2,00 m
Wardrobe	hanging/drawers/shelves
Bathroom	en suite
Toilet	en suite TMC
Toilet system	electric
Wash basin	in the bathroom
Shower	en suite
Bath tub	en suite
Extra info	TV Salora



Guest cabin 1	yes
Bed length (m)	2,00 m
Wardrobe	hanging/drawers/shelves
Bathroom	en suite
Toilet	en suite TMC
Toilet system	electric
Wash basin	in the bathroom
Shower	en suite
Washing machine	Salora
Flybridge	yes

MACHINERY

No of engines	2
Make	Volvo-Penta
HP	200
kW	147
Fuel	diesel
Engine hours	2727
Engine cooling system	freshwater heat exchanger
Drive	shaft
Shaft seal	yes
Engine controls	bowden cable
Gearbox	hydraulic
Bowthruster	electric Sidepower
Sternthruster	electric Sidepower
Thrust bearing	yes
Propeller type	fixed
Propeller shaft material	stainless steel
Shaft lubrication	water
Electric bilge pump	yes
Electrical installation	12v / 230v



KING TRAWLER 39

Generator	wet exhaust 6.5 KVa
Running hours generator	1152
Batteries	2x Wilco 12V 180AH
Battery monitor	yes
Battery charger	Victron engery 12v / 25A
Shorepower	with cable
Trimtabs	Bennett
Extra info	Engines and generator serviced 2024

NAVIGATION

Compass	Tokyo
Compass on flybridge	yes
Depth sounder	yes
VHF	Furuno
Autopilot	Philips navigator
Rudder angle indicator	VDO
Navigation lights	yes

EQUIPMENT

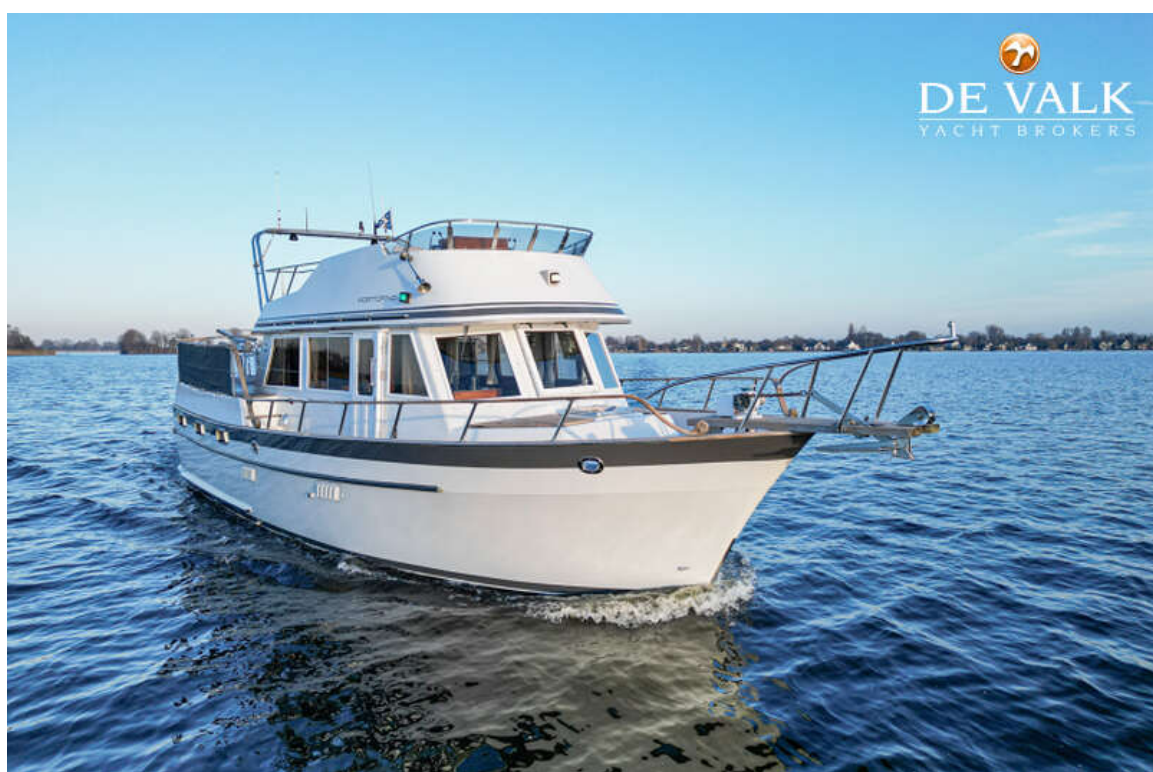
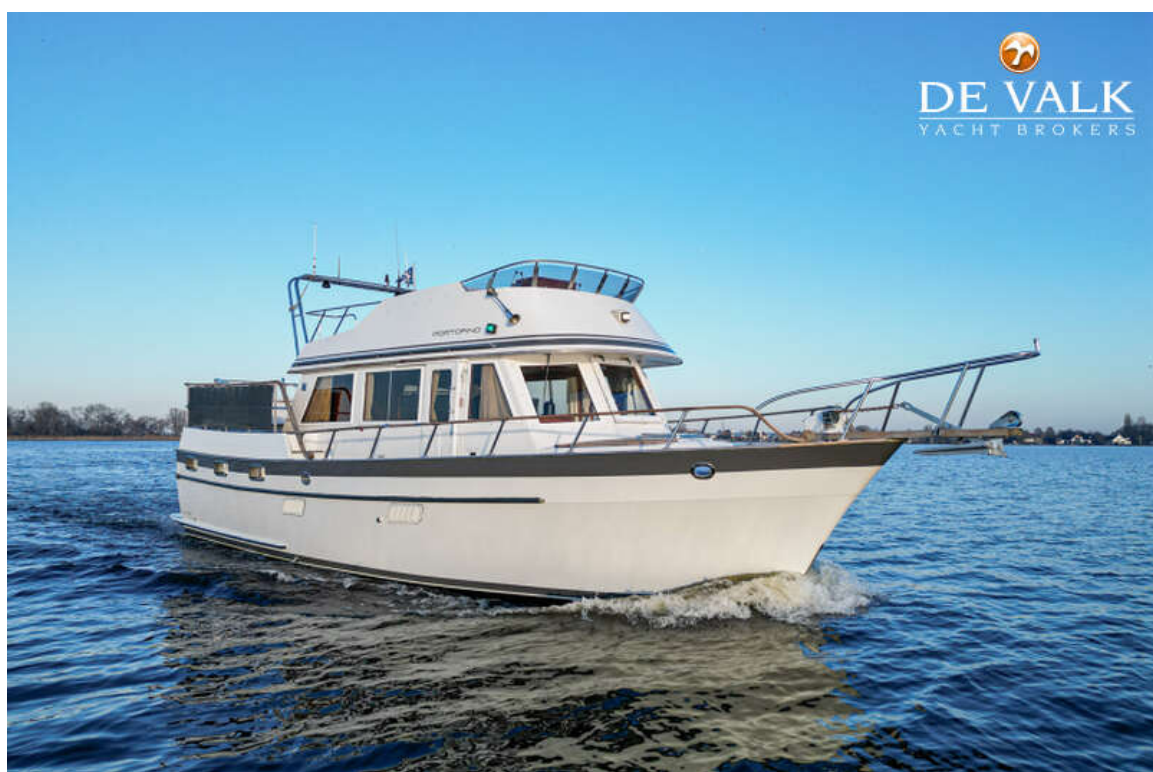
Fixed windscreen	yes
Cockpit cover	Flybridge 2025
Bimini	yes
Cockpit cushions	yes
Cockpit table	yes
Cockpit chairs	yes
Bathing platform	yes
Boarding ladder	stainless steel
Transom door	yes
Anchor	yes
Windlass	electrical
Sea railing	stainless steel



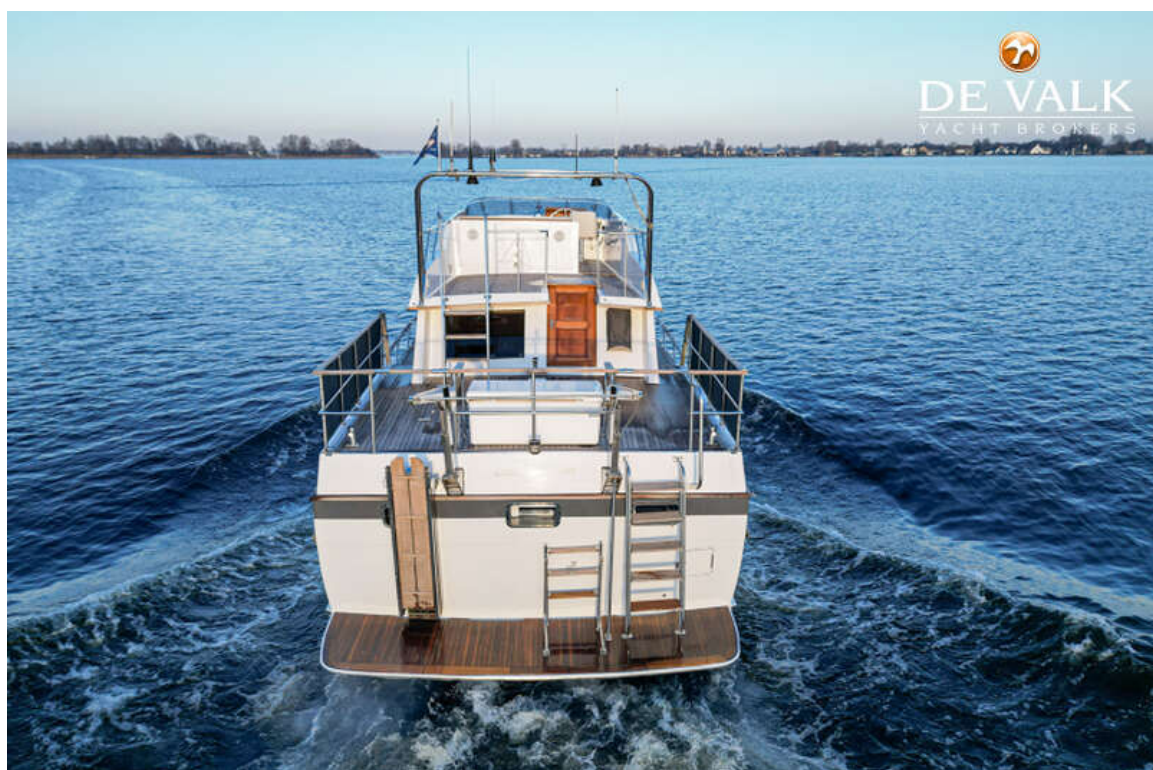
Grab rail (superstructure)	wood
Wiper	yes
Horn	electric
TV	JCV
TV receiver	Samsung
Radio	Pioneer
Cockpit speakers	Outside speakers
Speakers in salon	yes



KING TRAWLER 39



KING TRAWLER 39



KING TRAWLER 39



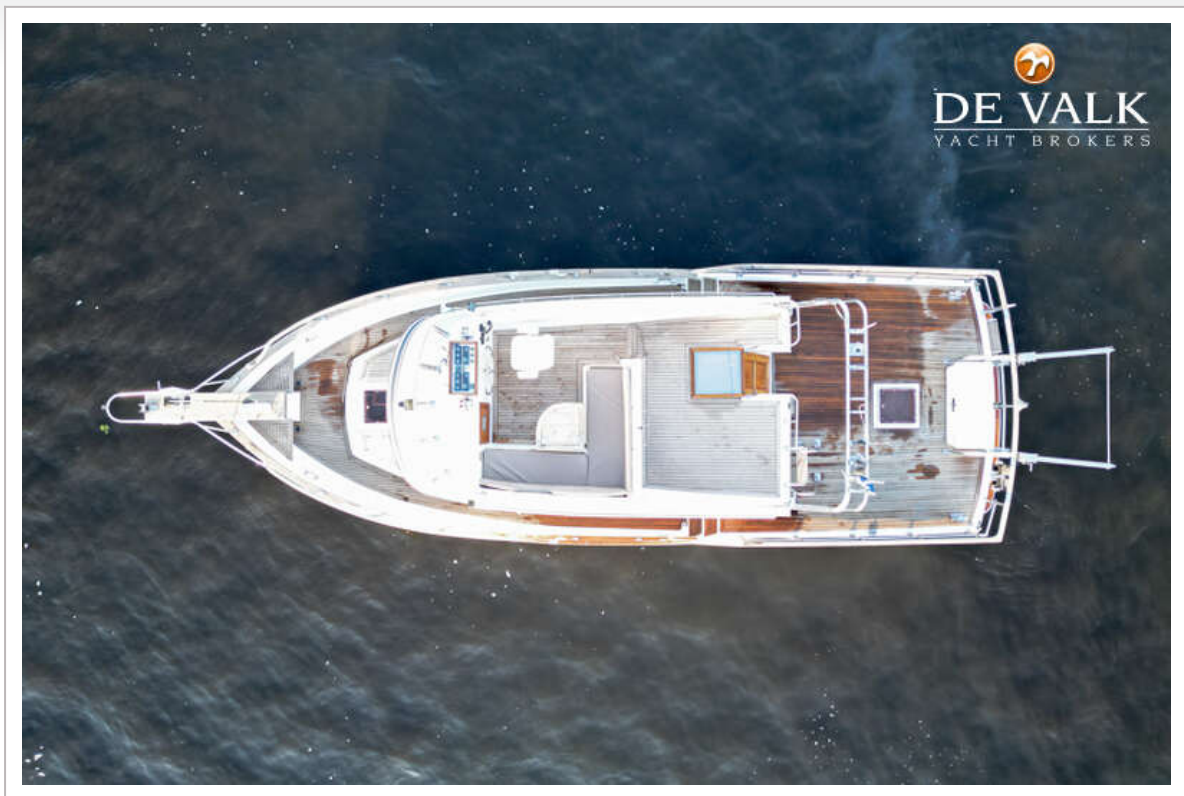
KING TRAWLER 39



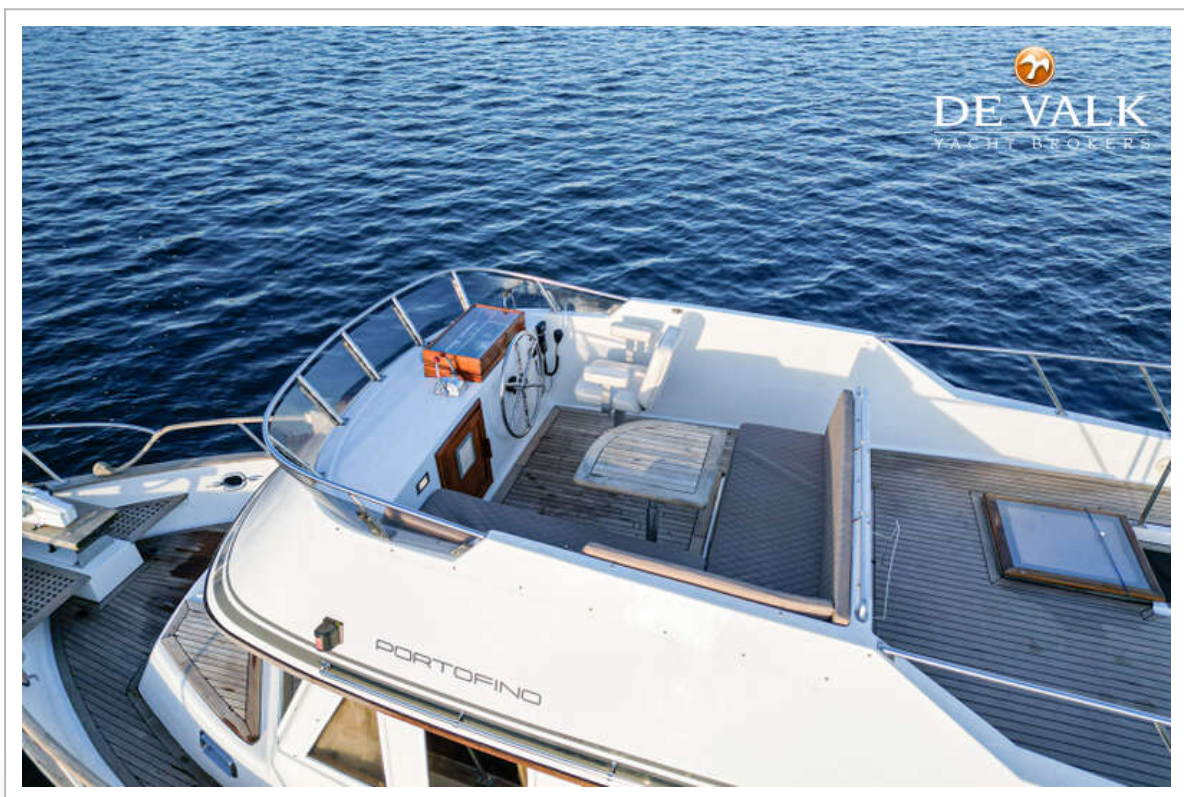
KING TRAWLER 39



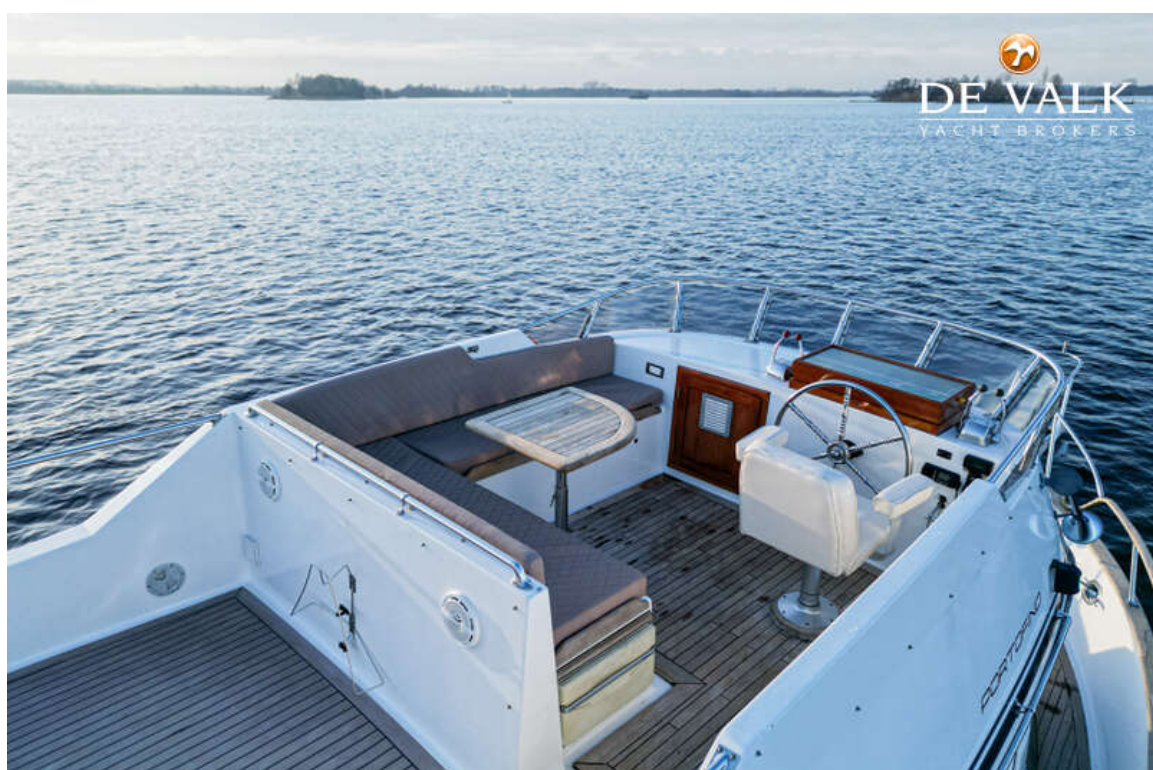
KING TRAWLER 39



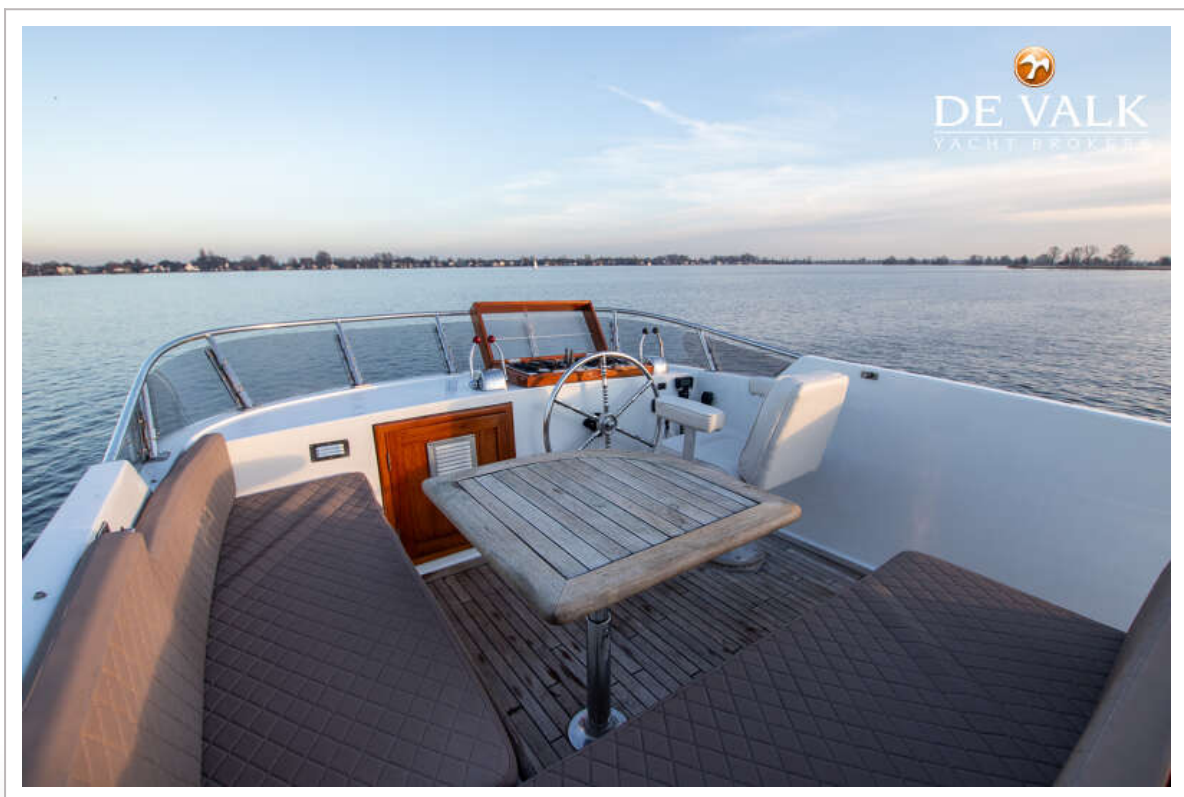
KING TRAWLER 39



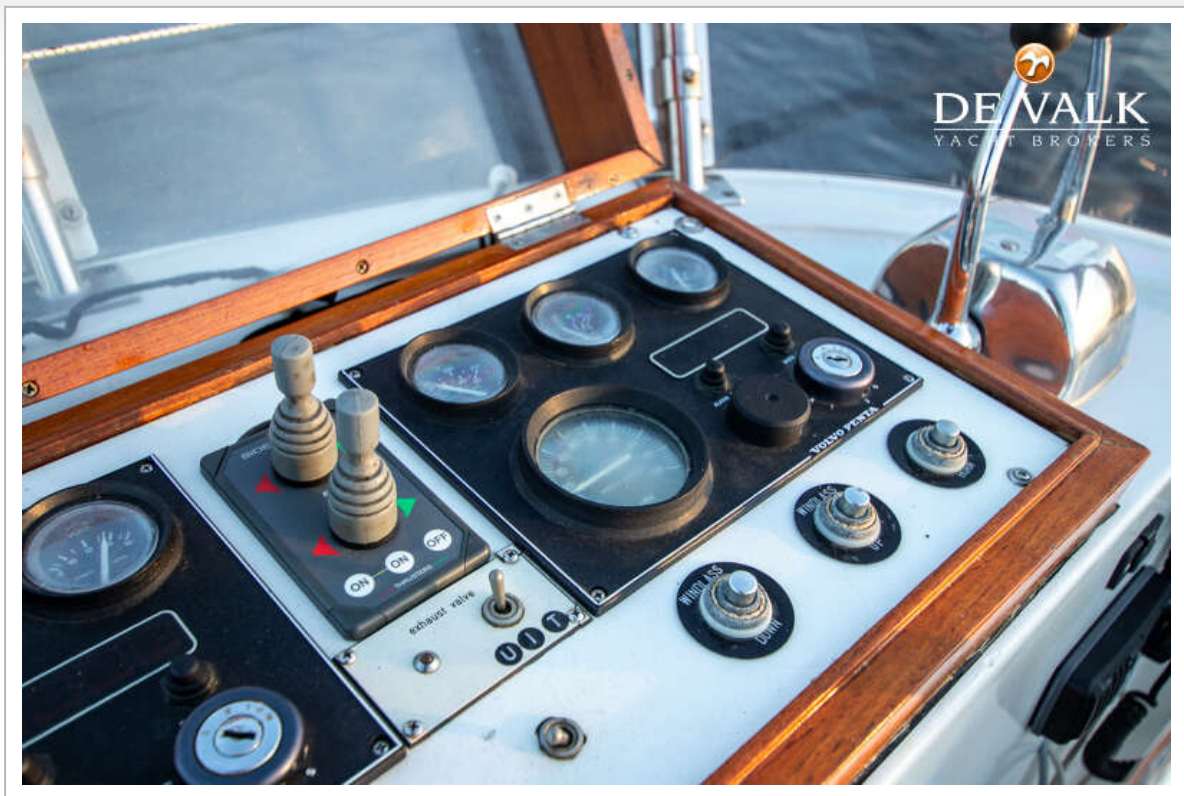
KING TRAWLER 39



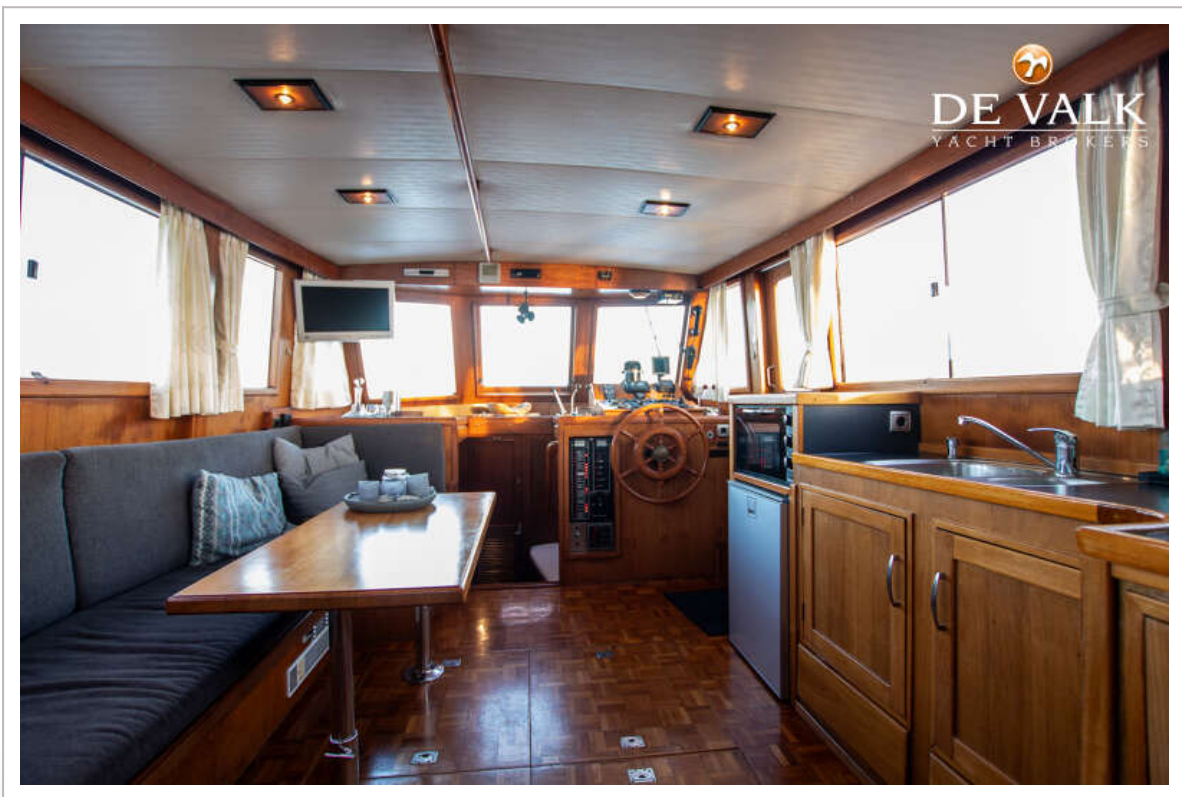
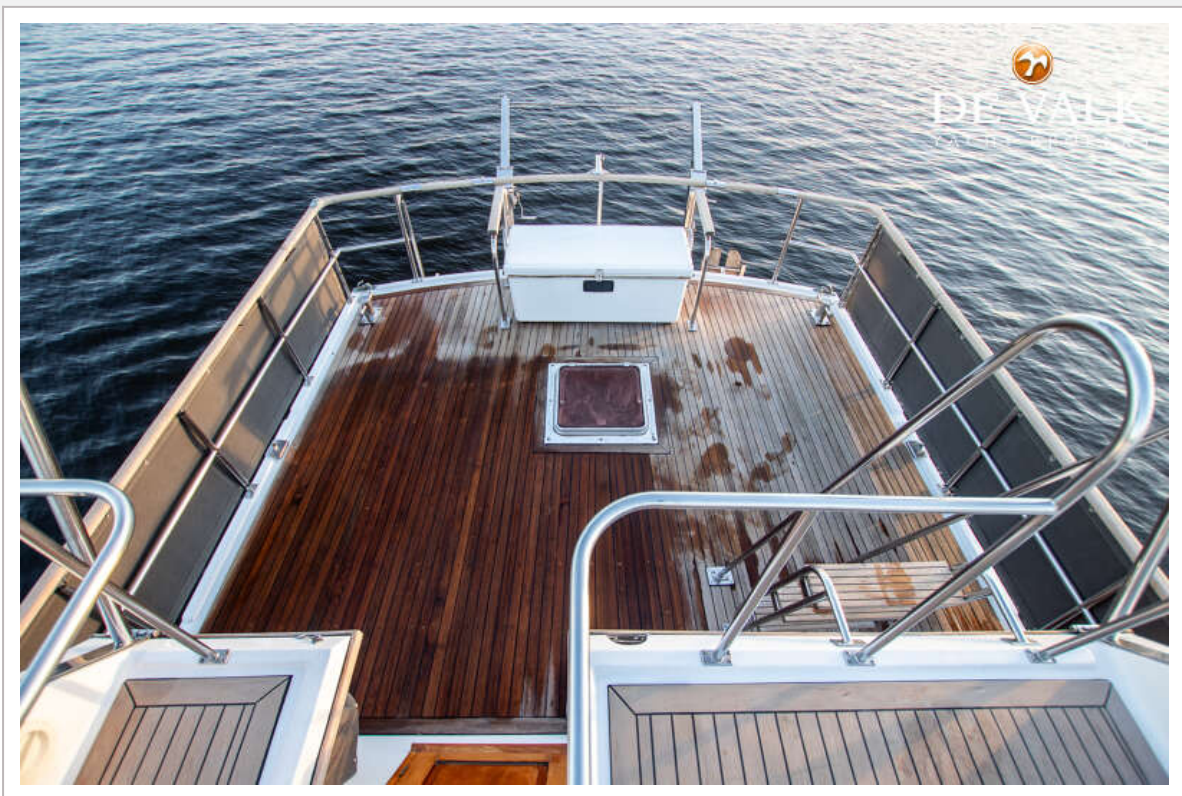
KING TRAWLER 39



KING TRAWLER 39



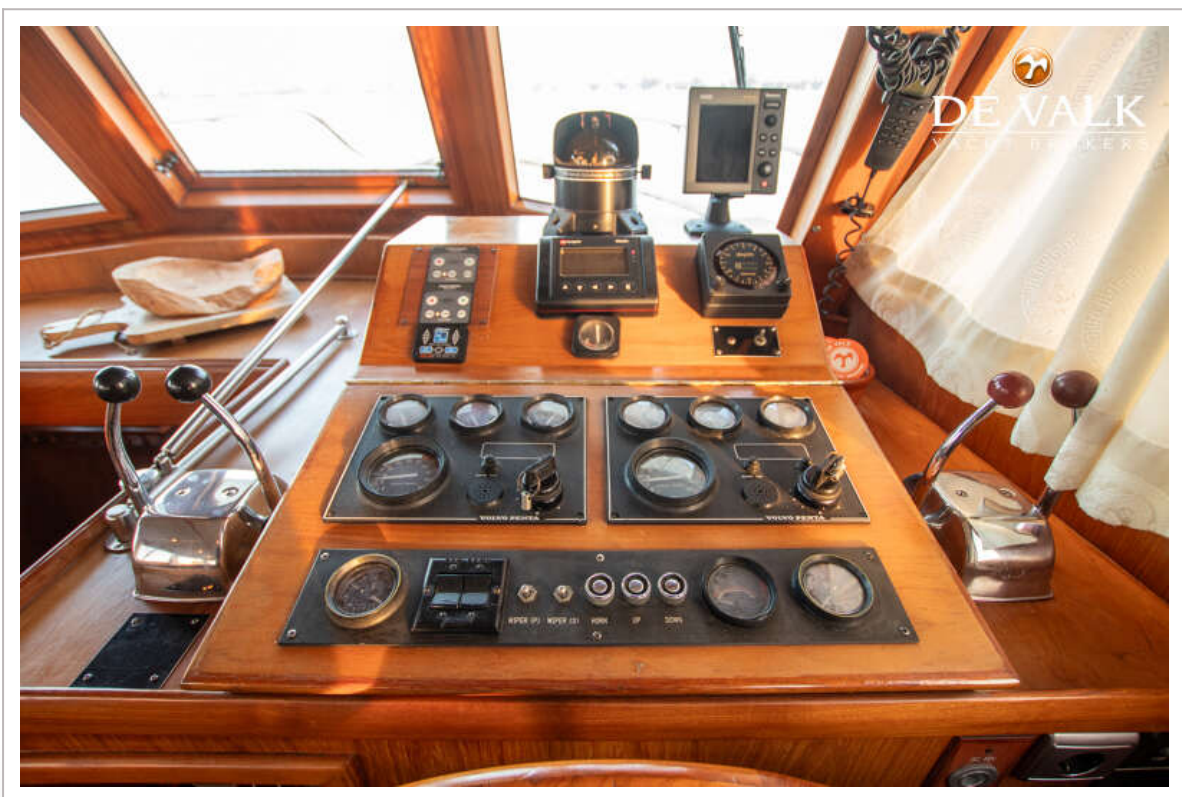
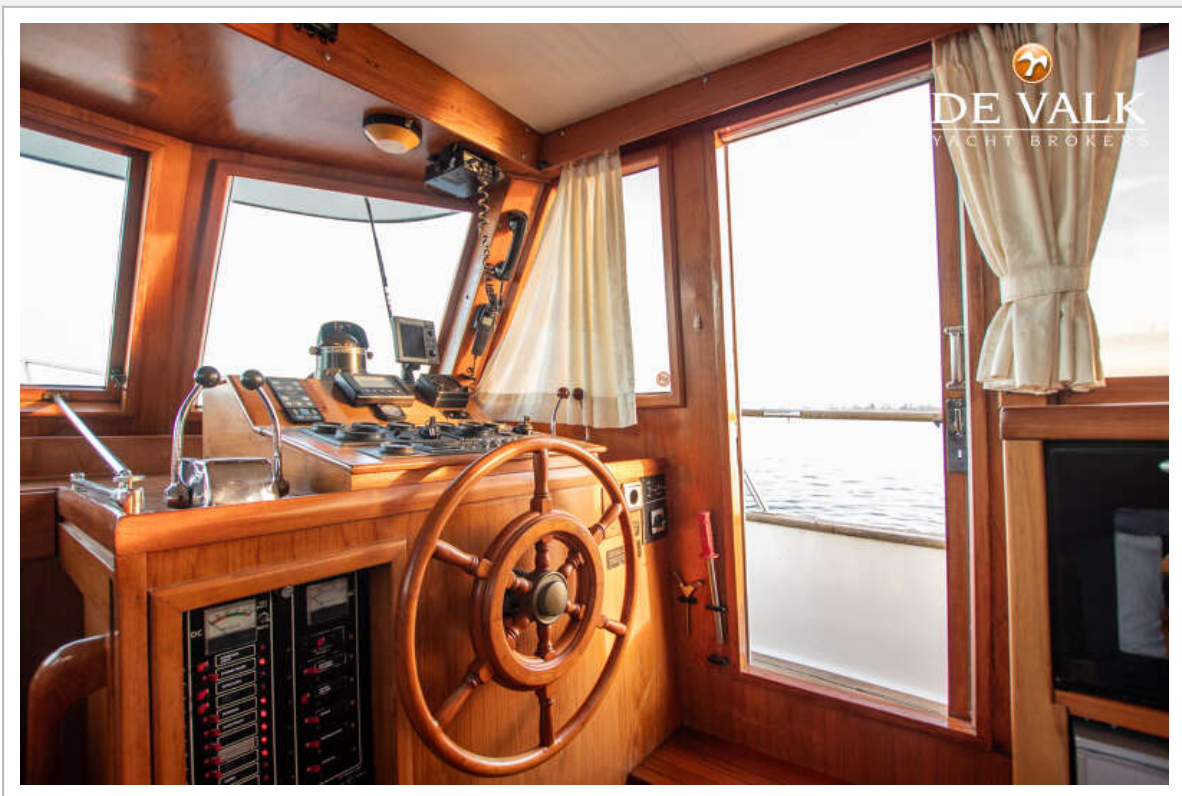
KING TRAWLER 39



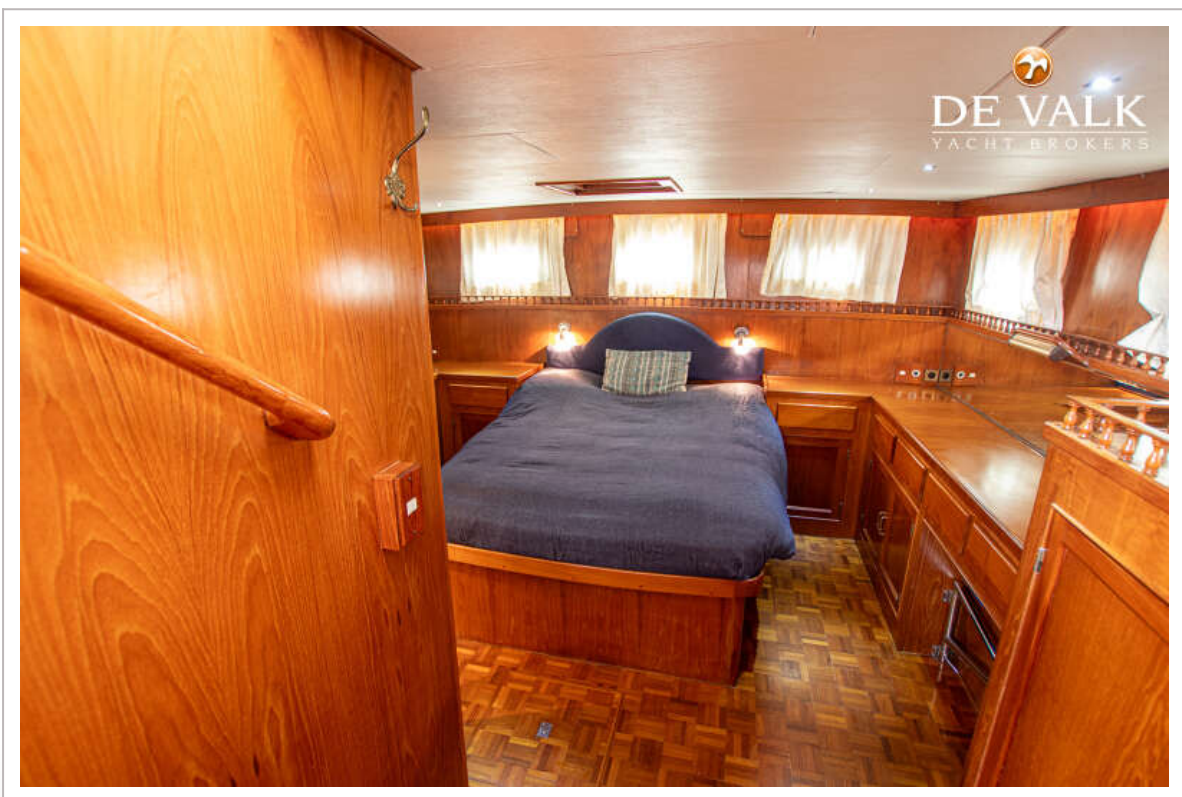
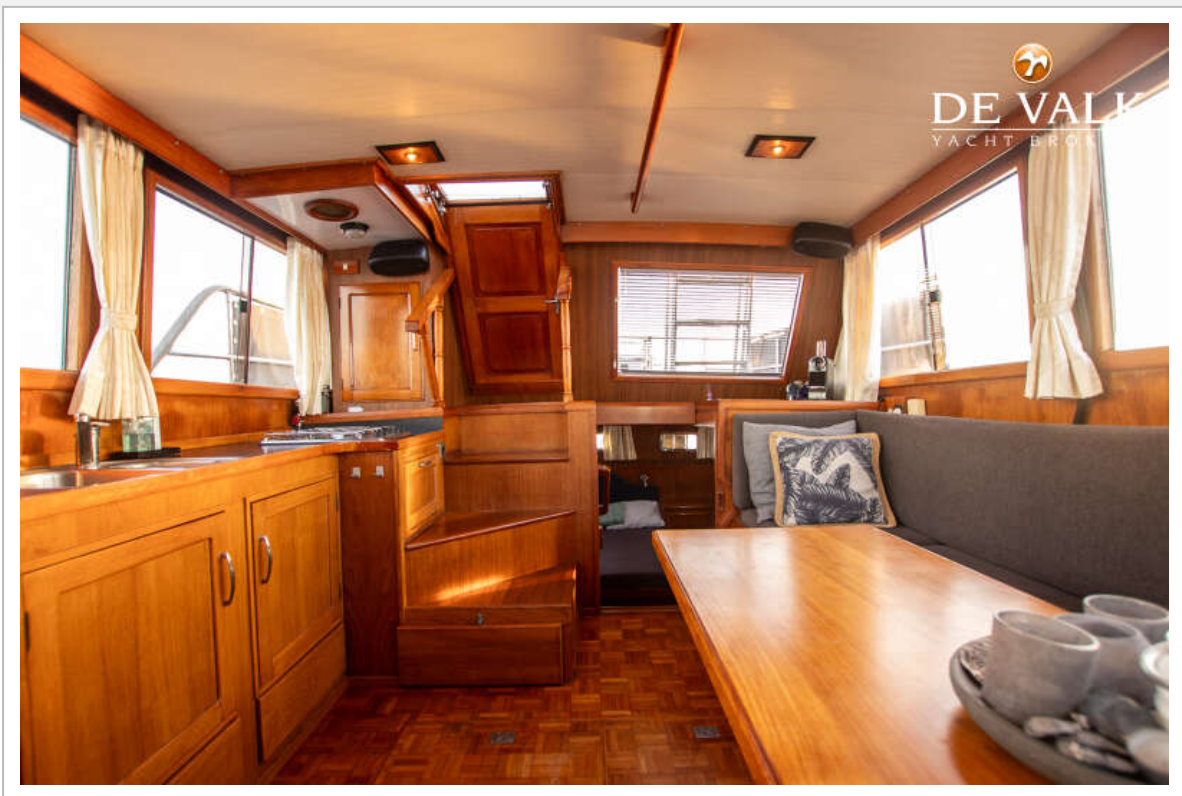
KING TRAWLER 39



KING TRAWLER 39



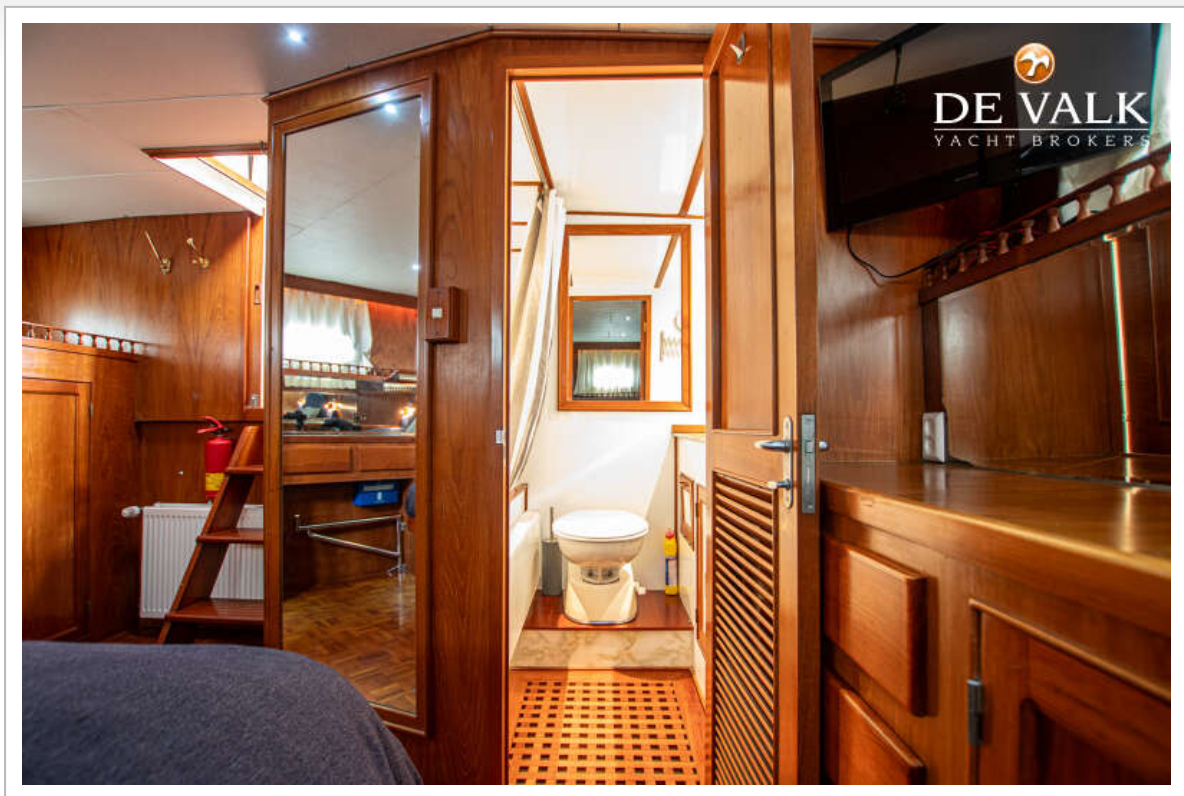
KING TRAWLER 39



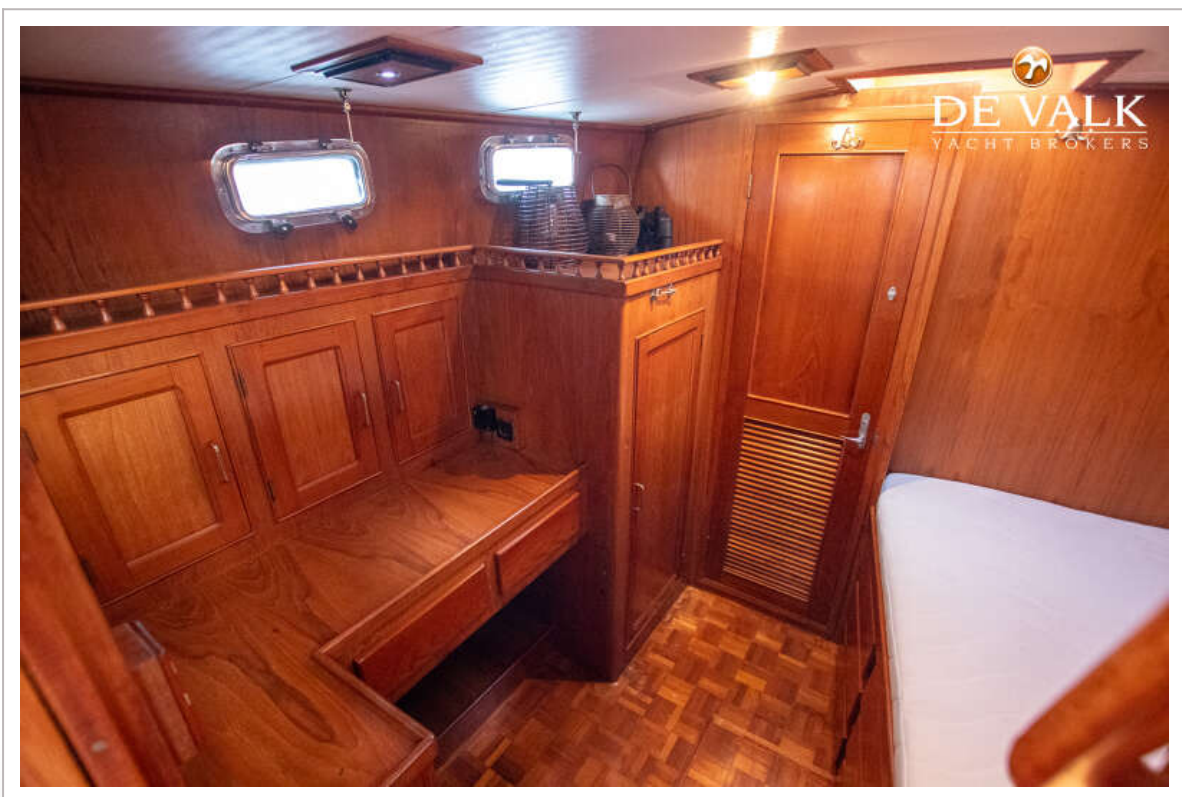
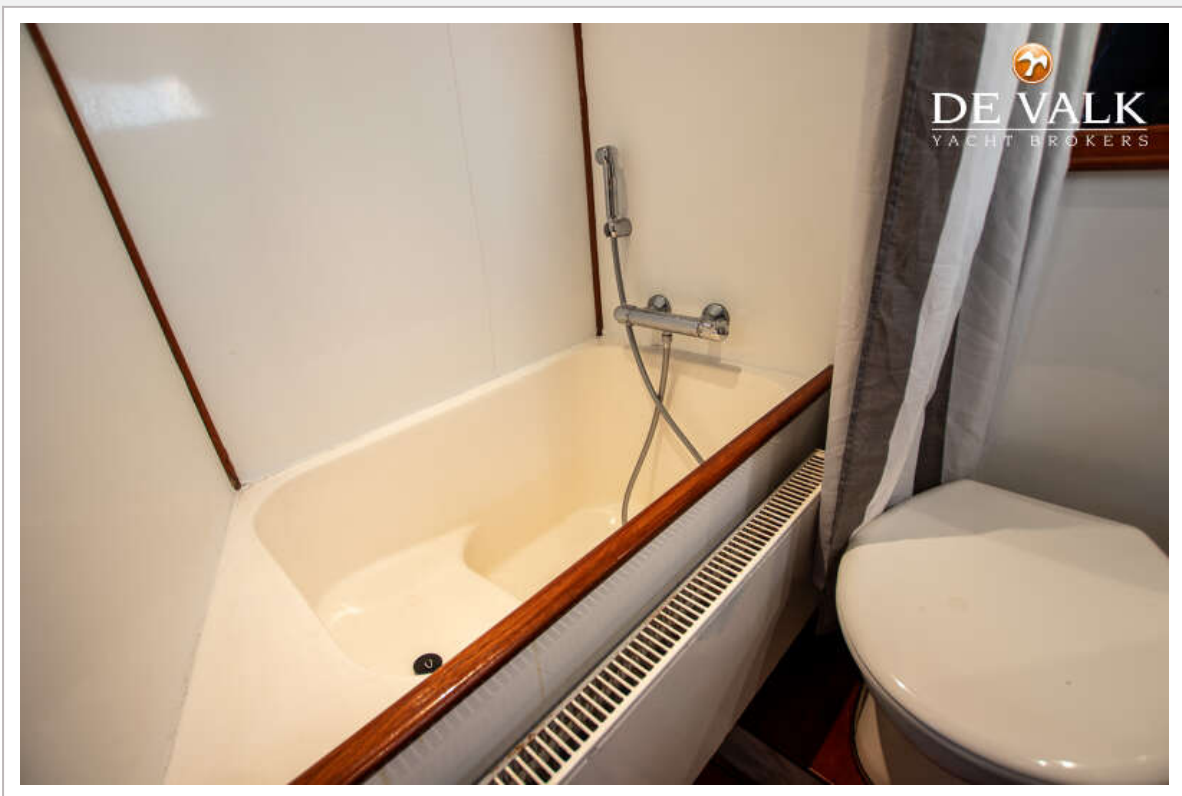
KING TRAWLER 39



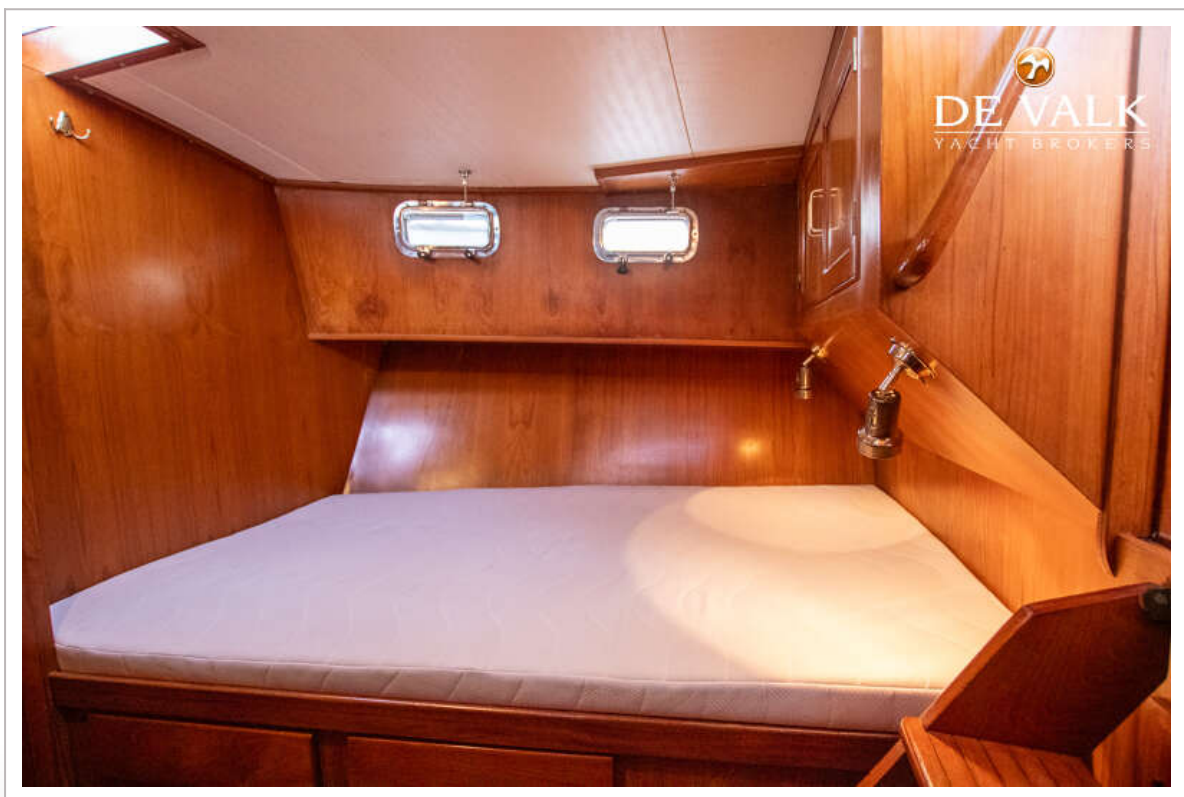
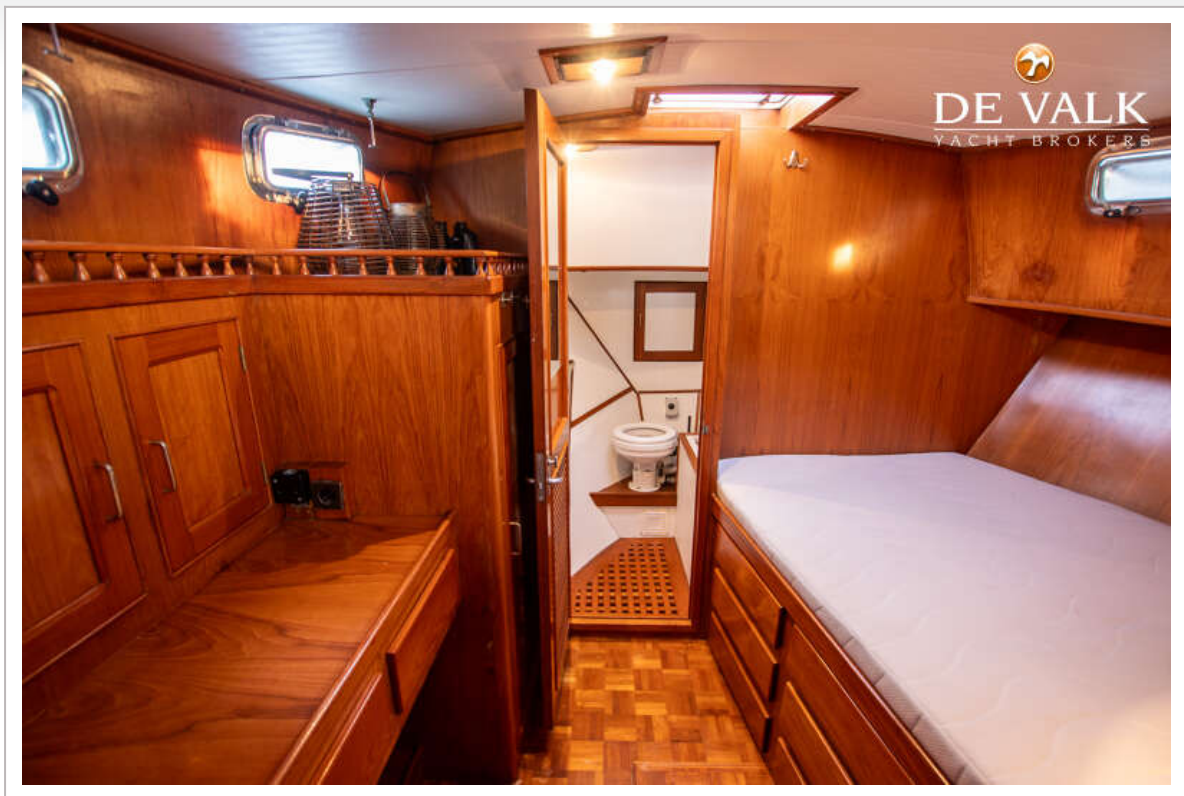
KING TRAWLER 39



KING TRAWLER 39



KING TRAWLER 39



KING TRAWLER 39



KING TRAWLER 39

