



DE VALK
YACHT BROKERS



CARLINE 1280



DE VALK
YACHT BROKERS

BROKER'S COMMENTS

Carline "Gemini" is in a great state of maintenance, the owner has had the yacht build in 2002 and made all effort to keep her in a top condition. The Carline is particularly suitable for staying on board for a long time, well insulated and equipped with Kabola central heating. a nice spacious lounge with very spacious sitting area and galley. The yacht is equipped with hydraulic bow and stern thruster, hydraulic anchor winch and radar bracket. Come see this Carline in our covered sales marina.

Henk de Vries

SPECIFICATIONS

Dimensions	12.80 x 4.20 x 1.20 (m)	Builder	Jachtbouw Bijko Harlingen
Built	2002	Cabins	1
Material	Steel	Berths	4
Engine(s)	1 x Perkins Sabre M135 diesel	Hp/Kw	135.00 (hp), 99.22 (kw)
Asking price	sold (VAT)	Lying	at sales office

CONTACT

Sales office	De Valk Sneek	Telephone	+31 (0)515 42 80 30
Address	Zwolsmanweg 7 8606 KC Sneek NL	E-mail	sneek@devalk.nl

DISCLAIMER

These particulars are given in good faith as supplied but cannot be guaranteed.



GENERAL

Model	CARLINE 1280
Type	motor yacht
LOA (m)	12,80
Beam (m)	4,20
Draft (m)	1,20
Air draft (m)	3,60
Headroom (m)	1,90
Year built	2002
Launched	06/2002
Builder	Jachtbouw Bijko Harlingen
Country	The Netherlands
Designer	Topline Yachtdesign
Displacement (t)	15
CE norm	C
Hull material	steel
Hull colour	white
Hull shape	multi hard chine
Keel type	long keel
Superstructure material	steel
Rubbing strake	rubber
Deck material	steel
Deck finish	teak
Superstructure deck finish	paint
Dorades	yes
Window frame	aluminium
Window material	glass Safety/veiligheids/Sicherheits
Deckhatch	yes
Portholes	yes
Insulation	rockwool
Radar arch	collapsible Hydraulisch



Fuel tank (litre)	stainless steel 2x 350
Level indicator (fuel tank)	yes
Freshwater tank (litre)	stainless steel 800
Level indicator (freshwater)	yes
Blackwater tank (litre)	170
Level indicator (blackwater)	yes
Blackwater tank extraction	deck extraction
Wheel steering	hydraulic
Outside helm position	hydraulic

ACCOMMODATION

Cabins	1
Berths	4
Interior	cherry
Floor	carpet
Aft deck	yes
Saloon	yes
Headroom saloon (m)	1,95
Heating	central heating Kabola HR400 (2016)
Galley	yes
Countertop	corian
Sink	stainless steel
Cooker	electric Siemens 4-pits
Extractor	Pelgrim
Microwave/oven combi	Atag
Fridge	Isotherm with freezer
Hot water system	on central heating Kabola
Water pressure system	electrical
Owners cabin	French bed
Bed length (m)	2,10
Wardrobe	hanging/drawers/shelves



Bathroom	yes
Washing machine/dryer combi	yes

MACHINERY

No of engines	1
Make	Perkins
Type	Sabre M135
HP	135,00
kW	99,22
Fuel	diesel
Year installed	2002
Maximum speed (kn)	7
Cruising speed (kn)	6
Consumption (l/hr)	7
Engine hours	4268
Engine cooling system	closed keelcooling
Drive	shaft
Shaft seal	Volvo Penta
Engine controls	bowden cable
Gearbox	hydraulic PRM Marine Transmissions
Bowthruster	hydraulic MAX power 125HYD
Sternthruster	hydraulic MAX power 125HYD
Propeller type	fixed
Propeller blades	4
Propeller shaft material	stainless steel
Shaft lubrication	water
Electric bilge pump	Jabsco
Generator	wet exhaust Lombardini 12000 LMG
Start battery	2x stk's omwisselbaar
Service battery	6X AGM ST180 (2017)
Generator battery	1x



Battery monitor	yes
Battery charger	Skylla 24/50/230 (2017)
Inverter	yes
Shorepower	with cable

NAVIGATION

Depth sounder/log	Raytheon ST60
VHF	Shipmate RS8300
VHF handheld	Cobra
Autopilot	Raymarine ST6001
Rudder angle indicator	Raytheon ST60
Plotter	Geonav

EQUIPMENT

Fixed windscreen	yes
Sprayhood	yes
Bathing platform	yes
Boarding ladder	stainless steel
Deck shower	yes
Anchor	RVS/Stainless steel
Anchor chain	RVS/Stainless steel
Windlass	hydraulic
Deck wash	yes
Davits	stainless steel Inklapbaar
Davits controls	manual
Sea railing	stainless steel
Grab rail (superstructure)	stainless steel
Railing side opening gates	yes
Danbuoy	yes
Wiper	3X
Horn	electric



Fenders	yes
Mooring lines	yes
Alarm system	Emarine
TV receiver	Intellian 72 (2017)
Radio-cd player	Pioneer DEH 1300R
Speakers in salon	yes
Clock - barometer	yes
Fire extinguisher	yes
Extinguisher in engine room	yes



CARLINE 1280



CARLINE 1280



CARLINE 1280



CARLINE 1280



CARLINE 1280



CARLINE 1280



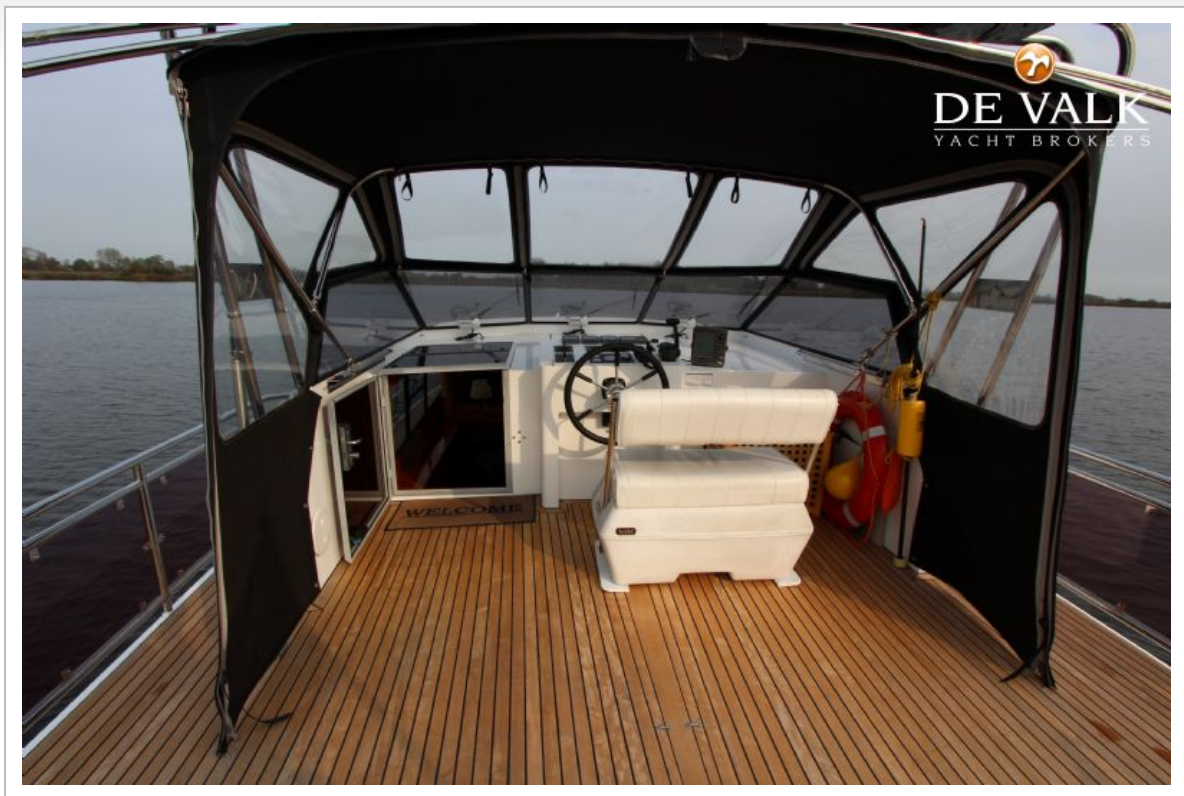
CARLINE 1280



CARLINE 1280



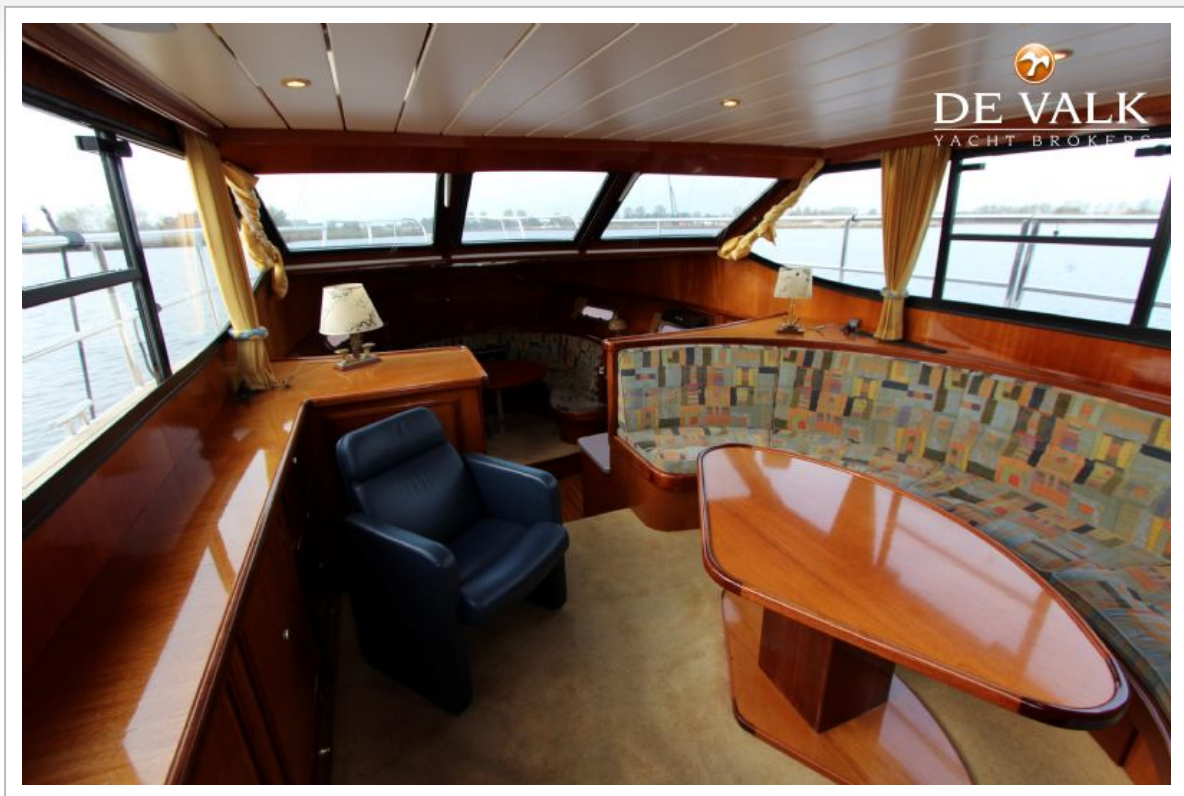
CARLINE 1280



CARLINE 1280



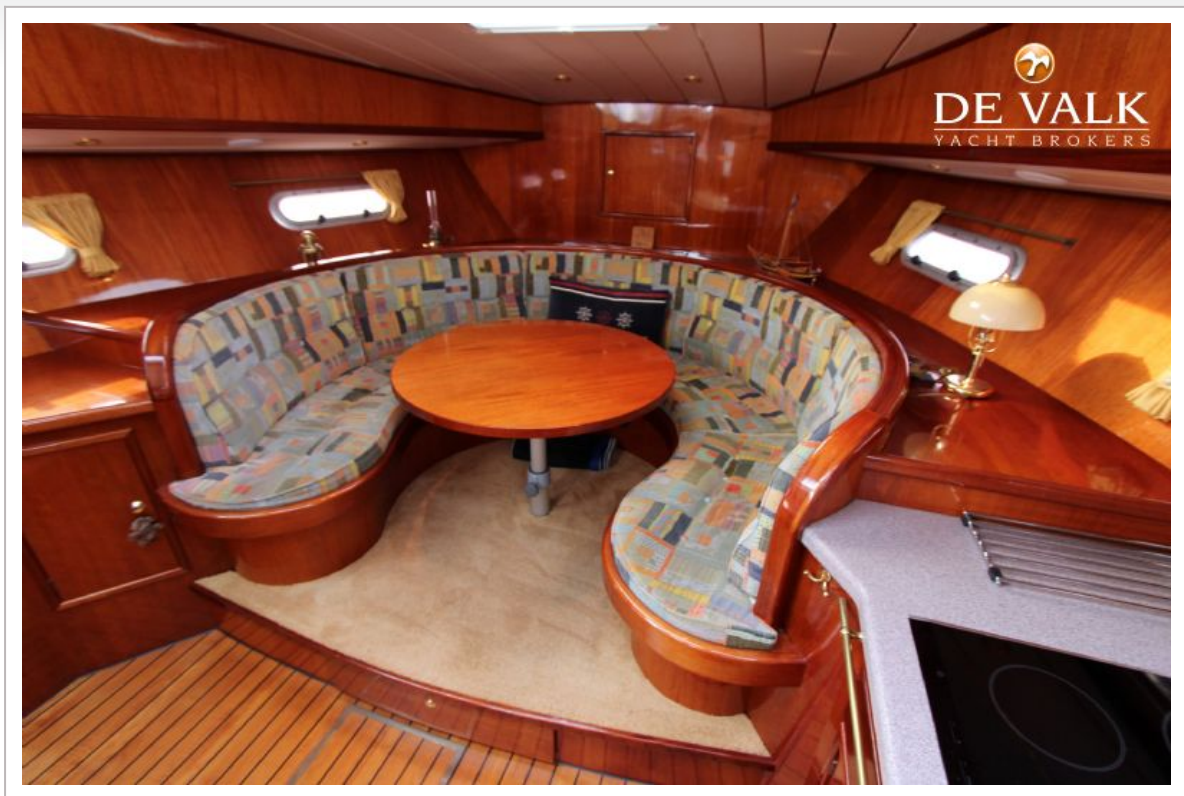
CARLINE 1280



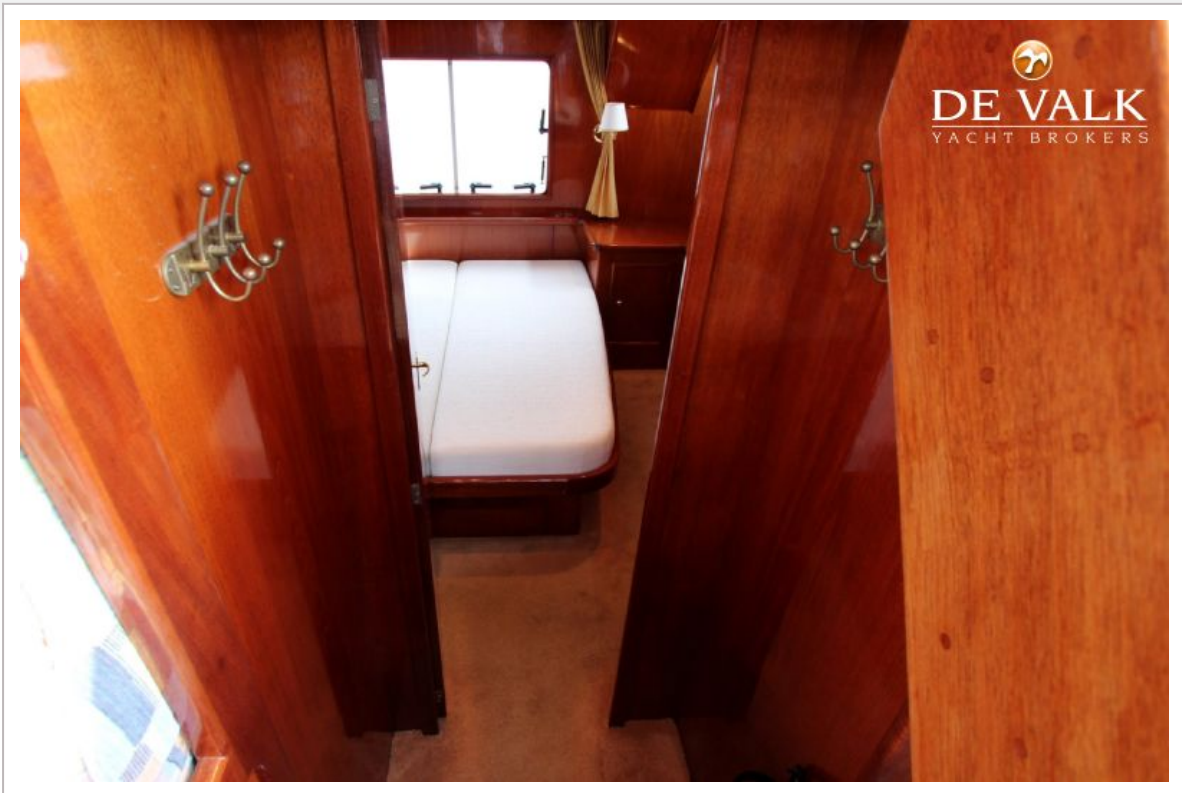
CARLINE 1280



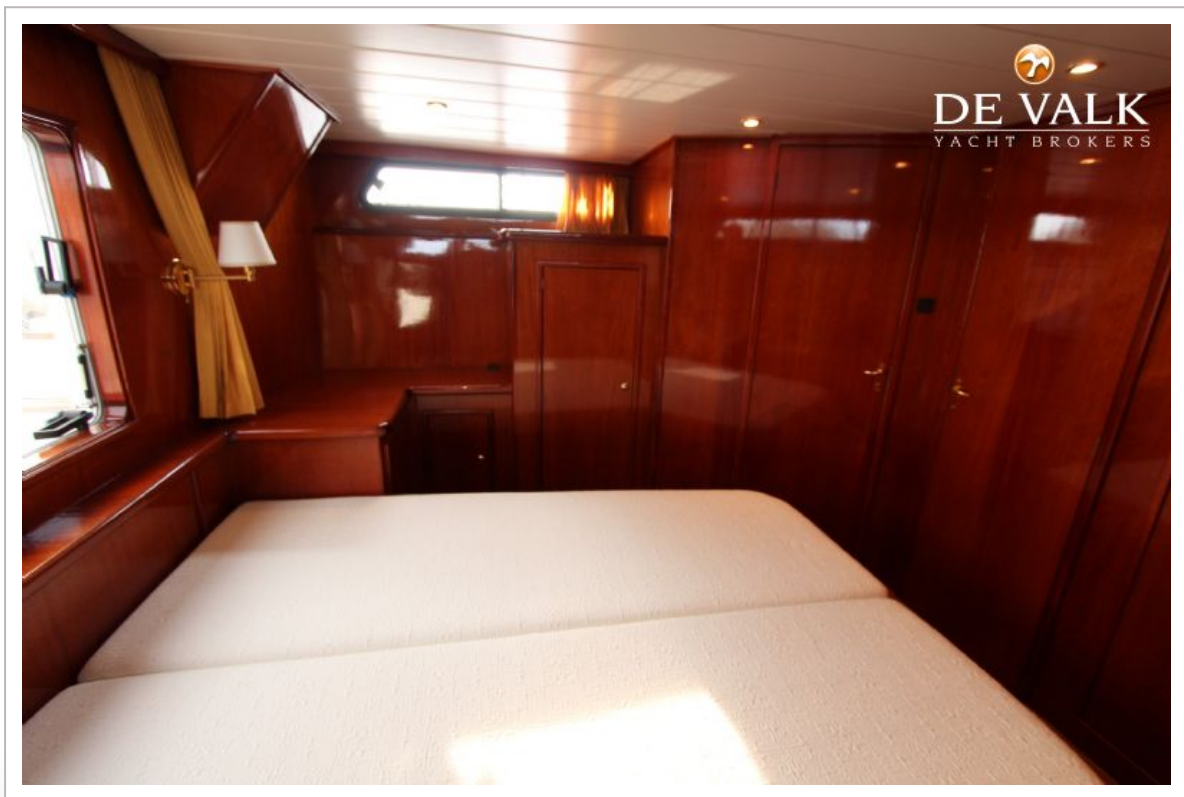
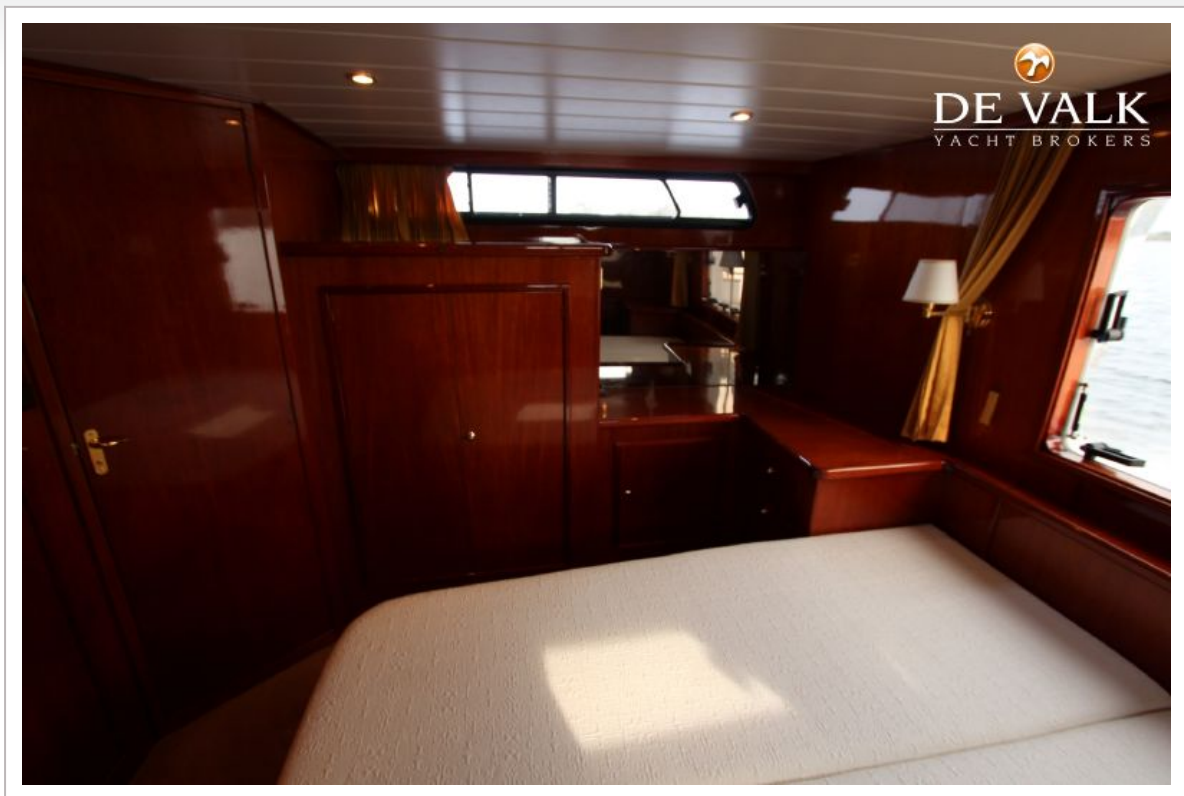
CARLINE 1280

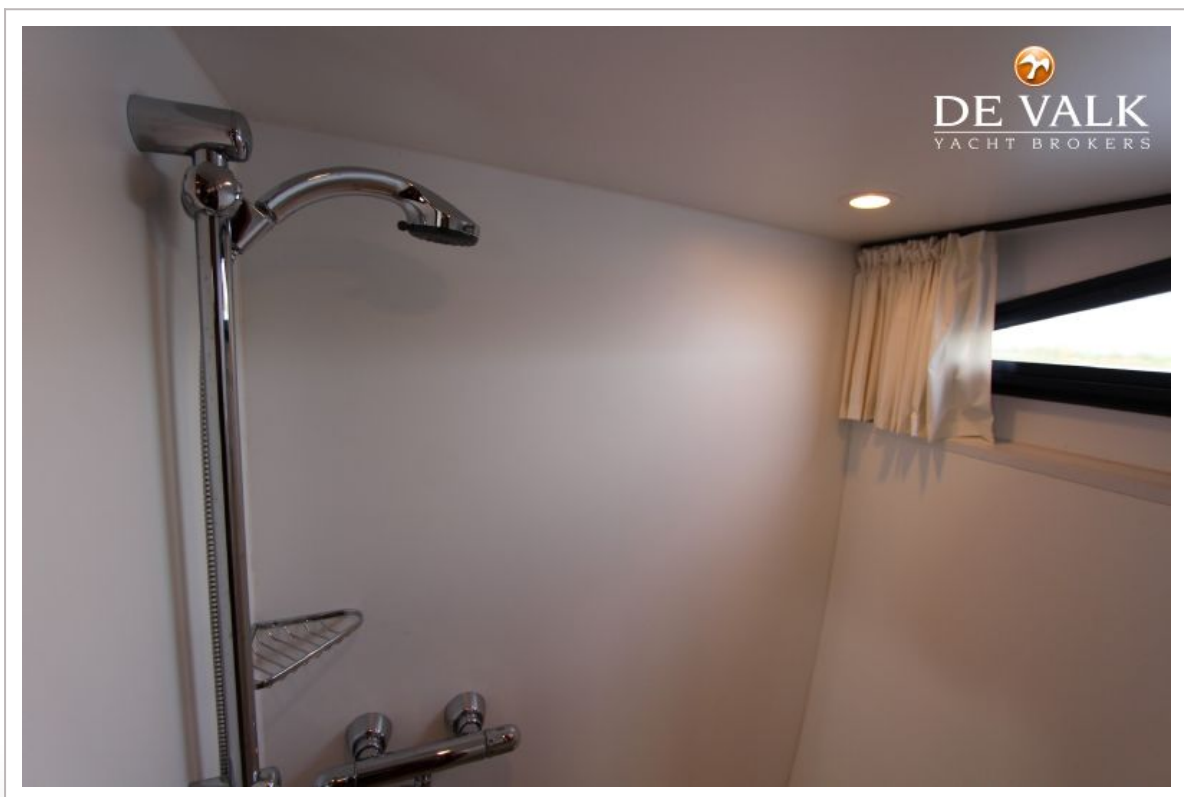
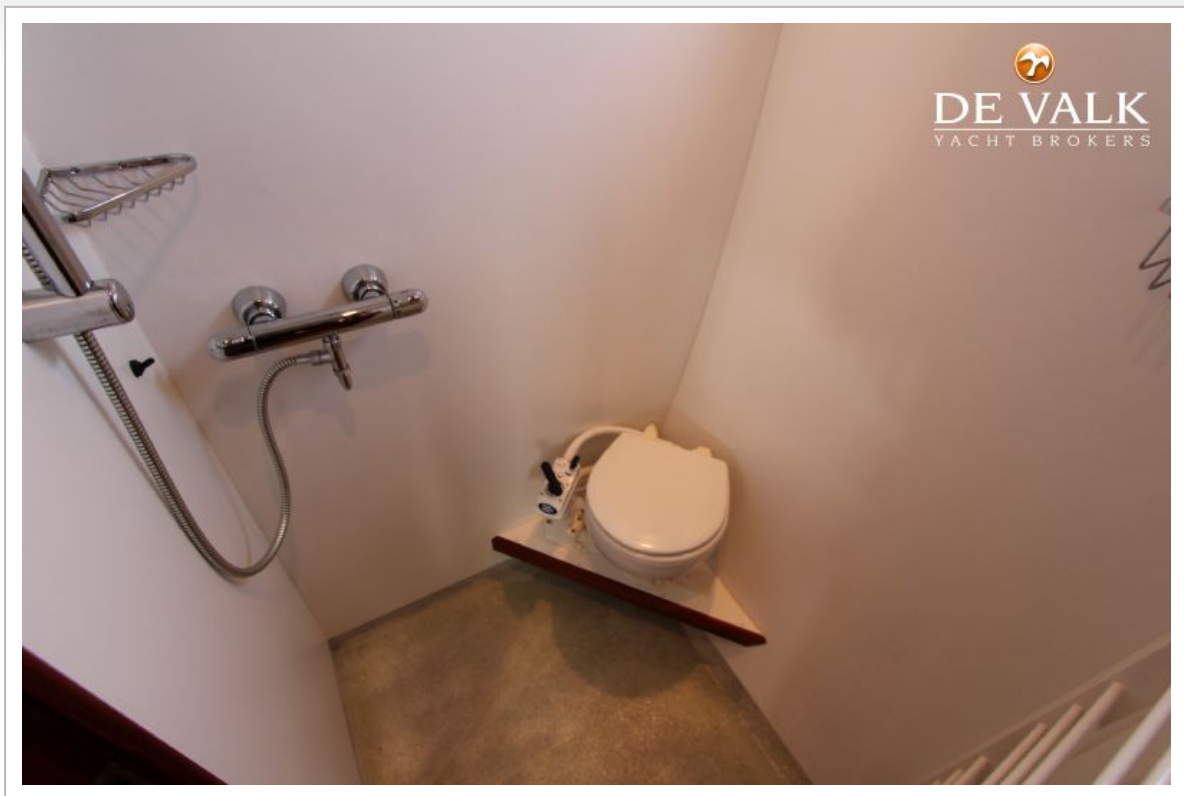


CARLINE 1280



CARLINE 1280

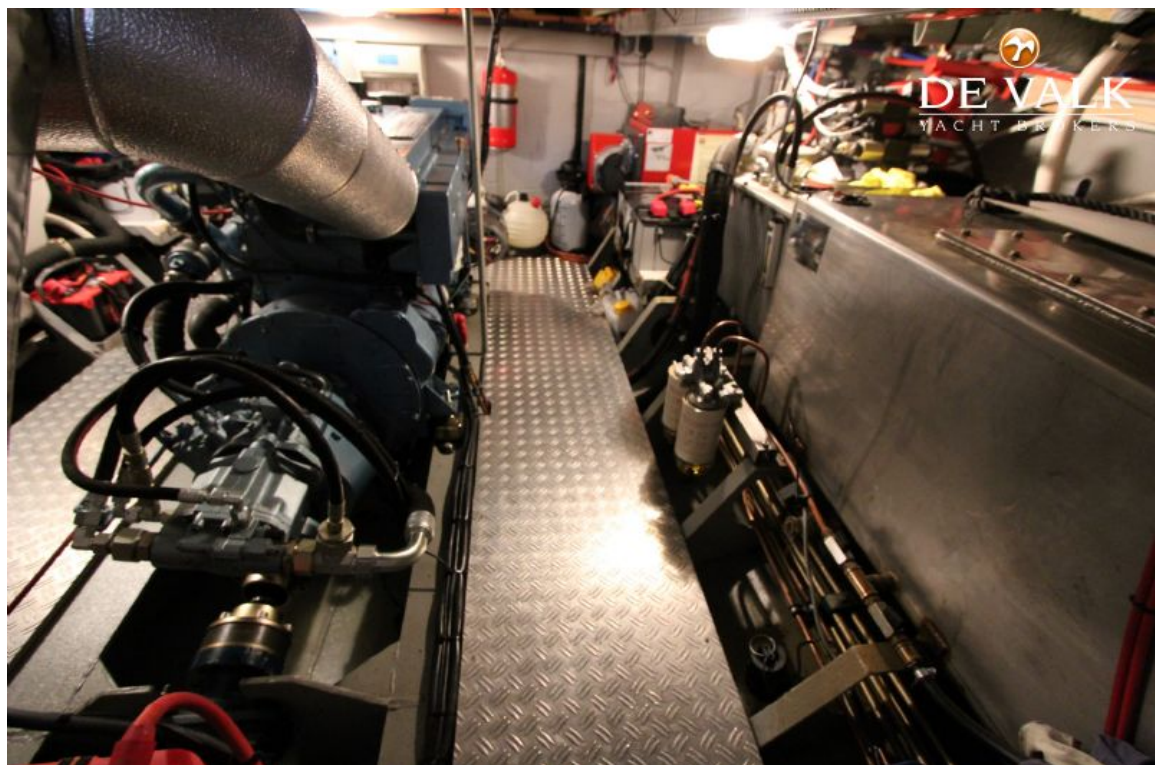
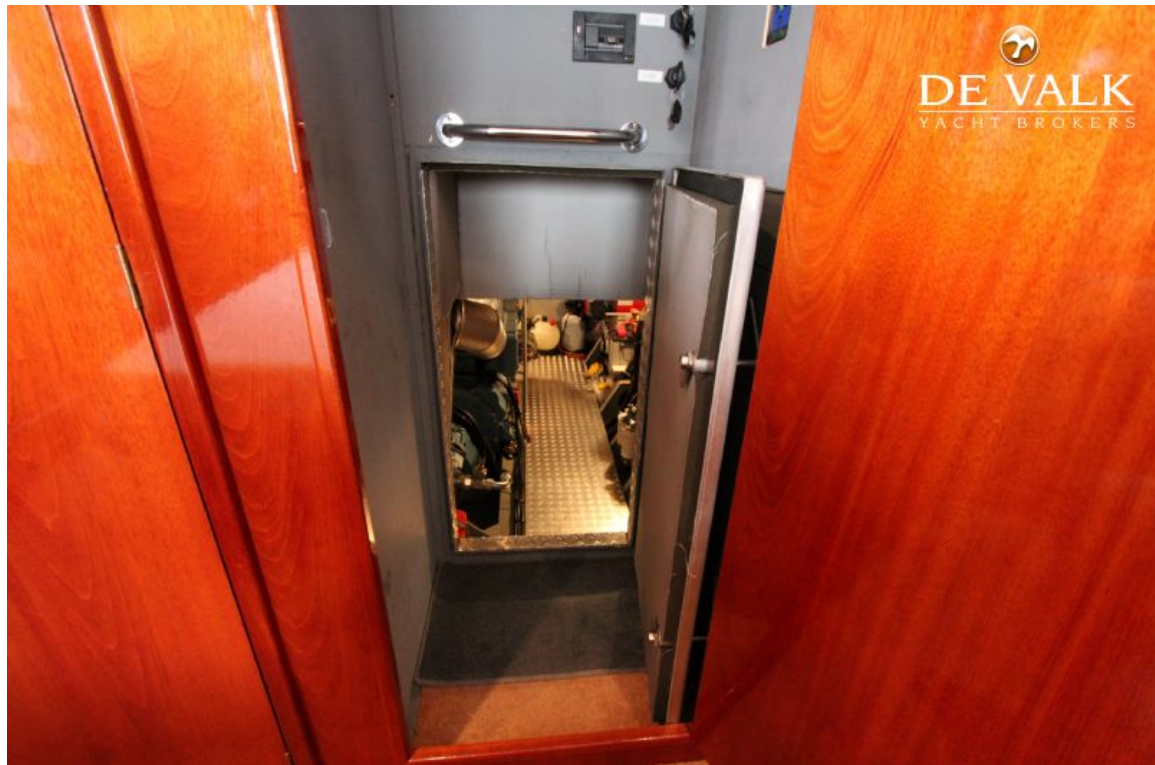




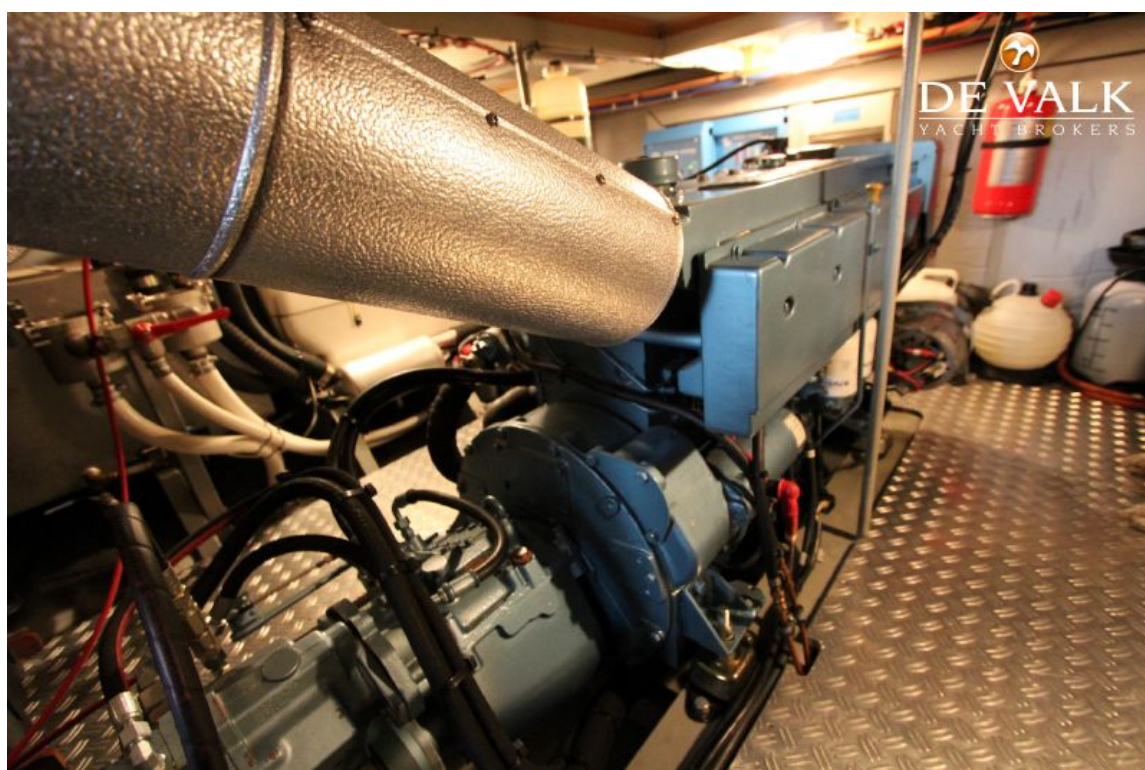
CARLINE 1280



CARLINE 1280



CARLINE 1280



CARLINE 1280



