



MOONEN 61

## BROKER'S COMMENTS

Very good example of the round bilged Moonen 61 series, some say a Super yacht in pocket size. A typical yacht for long distance passage making in style and comfort; equipped with anything you need for a pleasant stay. Inside Mrs Amber offers a spacious beautiful interior, sleeps 8 in 4 cabins. Outside a huge flybridge to relax and enjoy. She travels an economical run and superb sea behaviour due to stabilisers. Manoeuvring on the spot in ease, thanks to proportional hydraulic bow thruster and electrical stern thruster. Well maintained, kept in very good overall condition, ready to go!

*Willem Koopmans*

## SPECIFICATIONS

<b>Dimensions</b>	19.43 x 5.29 x 1.80 (m)	<b>Builder</b>	Moonen Shipyard
<b>Built</b>	1984	<b>Cabins</b>	4
<b>Material</b>	Steel	<b>Berths</b>	8
<b>Engine(s)</b>	2 x Volvo Penta TMD70C diesel	<b>Hp/Kw</b>	2 x 205.00 (hp), 150.68 (kw)
<b>Asking price</b>	sold (VAT )	<b>Lying</b>	contact sales office

## CONTACT

<b>Sales office</b>	De Valk Costa Blanca	<b>Telephone</b>	+34 96 50 21 569
<b>Address</b>	Costa Blanca Region 03730 Javea Alicante ES	<b>E-mail</b>	costablanca@devalk.nl

## DISCLAIMER

These particulars are given in good faith as supplied but cannot be guaranteed.



## GENERAL

Model	MOONEN 61
Type	motor yacht
LOA (m)	19,43
Beam (m)	5,29
Draft (m)	1,80
Headroom (m)	2,10
Year built	1984
Launched	1987
Builder	Moonen Shipyard
Country	The Netherlands
Designer	Aart Volker/ Claus Stallman
Displacement (t)	59
Hull material	steel
Hull colour	white
Hull thickness (mm)	8
Hull shape	round-bilged Flared bow
Keel type	long keel
Superstructure material	aluminium
Rubbing strake	stainless steel
Deck material	steel
Deck finish	teak
Superstructure deck finish	teak Needs attention, +/- 7 m2 needs repalcement
Cockpit deck finish	teak
Antifouling (year)	New antifouling January 2020
Window frame	aluminium
Window material	double glazing Main salon
Deckhatch	yes
Portholes	cupper chromed 12
Flybridge	Table need new blade
Flybridge suncover	yes



Radar arch	yes
Mast can be lowered	hydraulic
Fuel tank (litre)	5000
Level indicator (fuel tank)	yes
Fuel daytank (litre)	100
Freshwater tank (litre)	1400
Level indicator (freshwater)	yes
Blackwater tank (litre)	1400
Blackwater tank extraction	yes
Greywater tank (litre)	140
Wheel steering	hydraulic And joy stick steering
Inside helm position	yes
Flybridge helm position	hydraulic Wheel and joy stick
More info on hull	Sanblasted and 6 layers expoxy in 2005
More info on paintwork	Good condition
Extra info	Some paintwork to be done on superstructure, 4 days work € 3000,
Extra info	November 2019 Hull thickness report made (excelent)

## ACCOMMODATION

Cabins	4
Berths	8
Interior	mahogany
Floor	carpet
Aft deck	yes
Pilot house	yes
Saloon	yes
Heating	central heating Eberspacher W24D
Air-conditioning	reverse cycle airco Airrrrr; Fujichu heatpump unit installed 2017
Chart table	yes
Dinette	yes



Sliding door to aft deck	yes
Galley	yes
Countertop	yes
Sink	
Cooker	electric 4 burner
Oven	Miele
Extractor	Siemens
Microwave	Siemens
Fridge	3 x
Freezer	yes
Hot water system	yes
Water pressure system	electrical
Dishwasher	Miele
Owners cabin	French bed Midship
Wardrobe	yes
Bathroom	en suite
Toilet	en suite
Toilet system	electric
Wash basin	yes
Shower	yes
Guest cabin 1	French bed
Wardrobe	yes
Bathroom	shared
Toilet	en suite
Toilet system	electric
Wash basin	yes
Shower	shared
Guest cabin 2	bunk bed
Bed length (m)	yes
Wardrobe	yes
Bathroom	shared
Toilet	en suite



Toilet system	electric
Shower	shared
Guest cabin 3	double bed Crew or guest
Wardrobe	yes
Bathroom	en suite
Toilet	en suite
Toilet system	manual
Wash basin	in the bathroom
Shower	en suite
Washing machine/dryer combi	AEG Lavamat
Sauna	Pre- prepared
Flybridge	Grill, oven, fridge and sink

## MACHINERY

No of engines	2
Make	Volvo Penta
Type	TMD70C
HP	205
kW	150,68
Fuel	diesel
Year installed	1984
Maximum speed (kn)	10
Cruising speed (kn)	8
Consumption (l/hr)	12 liter at 6 knots
Range (nm)	2400
Engine hours	4500/3800
Engine cooling system	freshwater heat exchanger
Drive	shaft
Engine controls	mechanical
Gearbox	hydraulic Twindisk 2.9/1
Bowthruster	hydraulic Proportional



<b>Sternthruster</b>	Sidepower 10hp
<b>Exhaust</b>	watercooled
<b>Propeller type</b>	fixed
<b>Propeller blades</b>	4
<b>Shaft lubrication</b>	oilbath
<b>Manual bilge pump</b>	yes
<b>Electric bilge pump</b>	yes
<b>Generator</b>	Onan 16kw
<b>Running hours generator</b>	approx. 4700
<b>Start battery</b>	2 x 2
<b>Service battery</b>	Battery pack with 2V cell
<b>Generator battery</b>	1 x 2
<b>Battery charger</b>	Mastervolt Mass 24/50
<b>Inverter</b>	Mastervolt Mass sine 24/3000
<b>Shorepower</b>	with cable
<b>Insulation transformer</b>	yes
<b>Watermaker</b>	Needs service, filters on board
<b>Stabilizers</b>	fin SeaRocq
<b>Extra info</b>	Parker PAV 50 hydraulic pump on each main engine
<b>Extra info</b>	Oil transfer system and tank for wast oil
<b>Extra info</b>	Racor fuelpolishing system

## NAVIGATION

<b>Compass</b>	yes
<b>Electric compass</b>	On pilot
<b>Depth sounder</b>	Raymarine, new sensor insstalled
<b>VHF</b>	Sailor and Raymarine
<b>Autopilot</b>	Robertson
<b>Rudder angle indicator</b>	Dataline
<b>Plotter/GPS</b>	2 x Raymarine C80
<b>Navtex</b>	yes



Radio receiver	Fastnet Radio GMDSS
Transmitter	JRC SSB
Camera	2 x
Navigation lights	yes
Searchlight	yes
Extra info	Air compressor

## EQUIPMENT

Cockpit cover	yes
Bimini	yes
Sun awning	FB steering and seating area
Cockpit cushions	yes
Cockpit table	yes
Cockpit chairs	yes
Bathing platform	yes
Boarding ladder	stainless steel
Gangway	Hydraulic
Deck shower	Warm/cold
Anchor	Stainless steel
Anchor chain	yes
Windlass	electrical Simpson Type 2000
Dinghy	Steady 320 - semi rigid hull
Outboard	Yamaha 9,5 HP
Deck crane	hydraulic Approx. 700kg
Sea railing	stainless steel Teak and stainless steel
Life raft	container 2x
Last life raft survey	2015
Lifejackets	yes
Wiper	yes
Window ventilator	yes
Window heating	yes





Horn	yes
Fenders	yes
Mooring lines	yes
Spare parts	yes
Tools	Partly
TV	Sony
Radio-cd player	Grundig
Cockpit speakers	yes
Clock - barometer	Clock and barometer
Fire extinguisher	yes
Latest extinguisher survey	2011
Auto extinguisher system	yes



# MOONEN 61



# MOONEN 61





# MOONEN 61



# MOONEN 61





# MOONEN 61



# MOONEN 61





# MOONEN 61





# MOONEN 61



# MOONEN 61

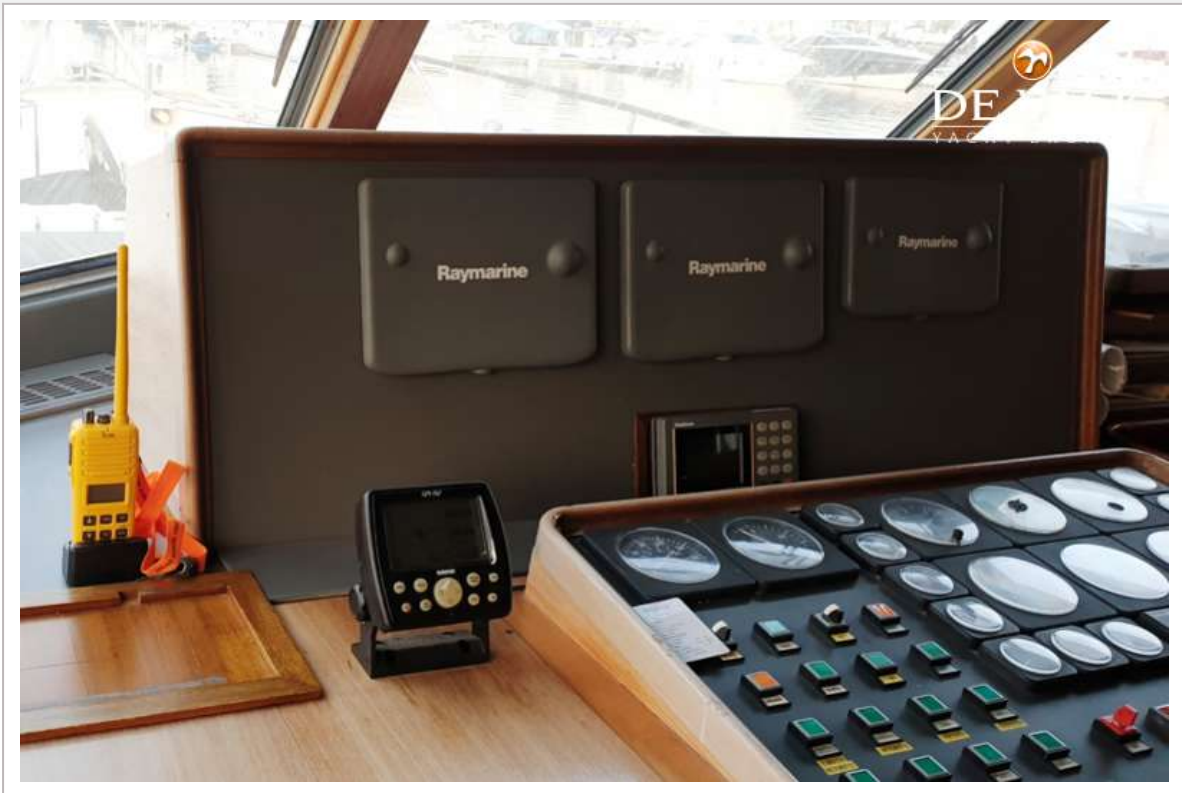




# MOONEN 61



# MOONEN 61

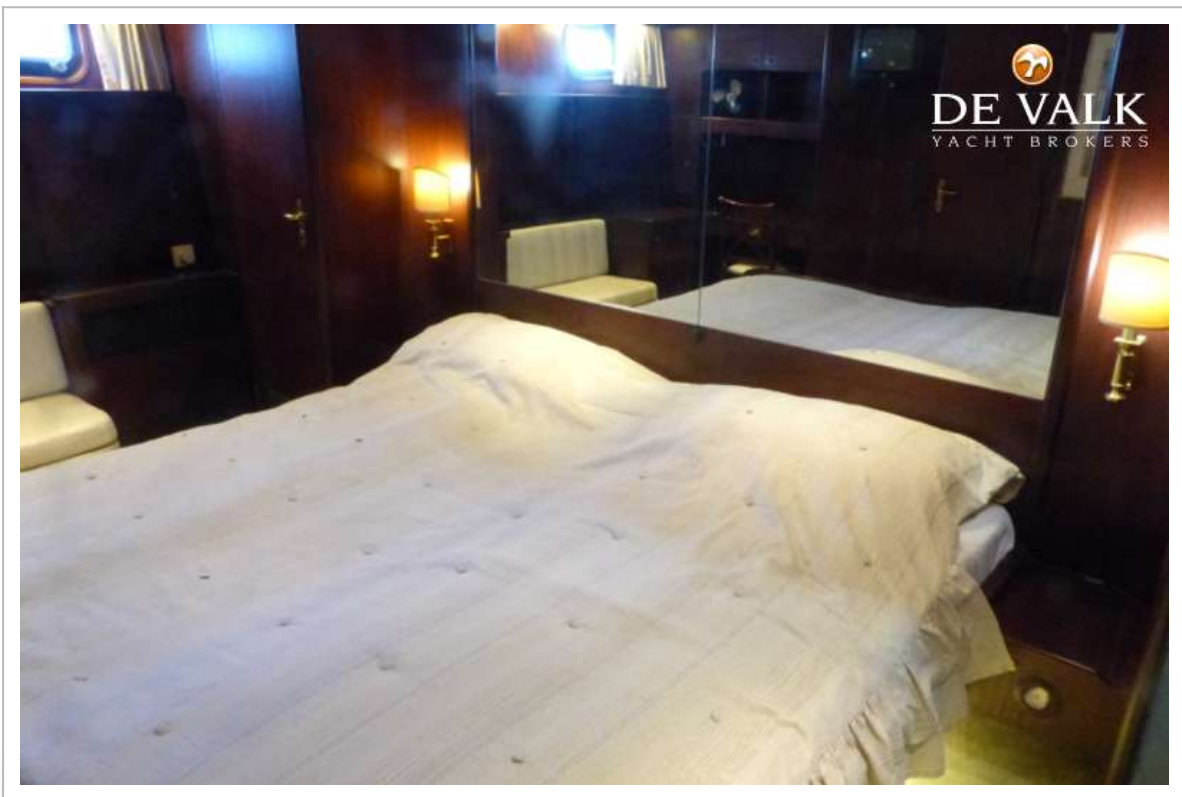




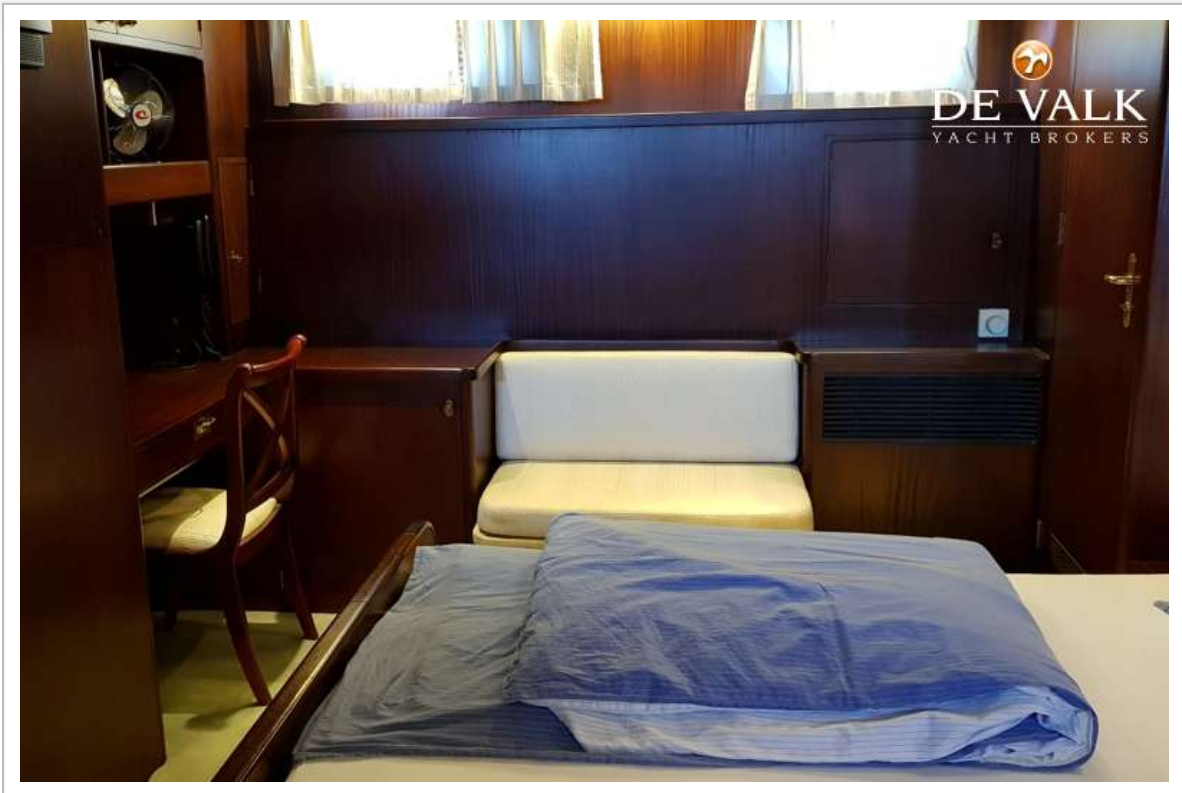
# MOONEN 61



# MOONEN 61



# MOONEN 61



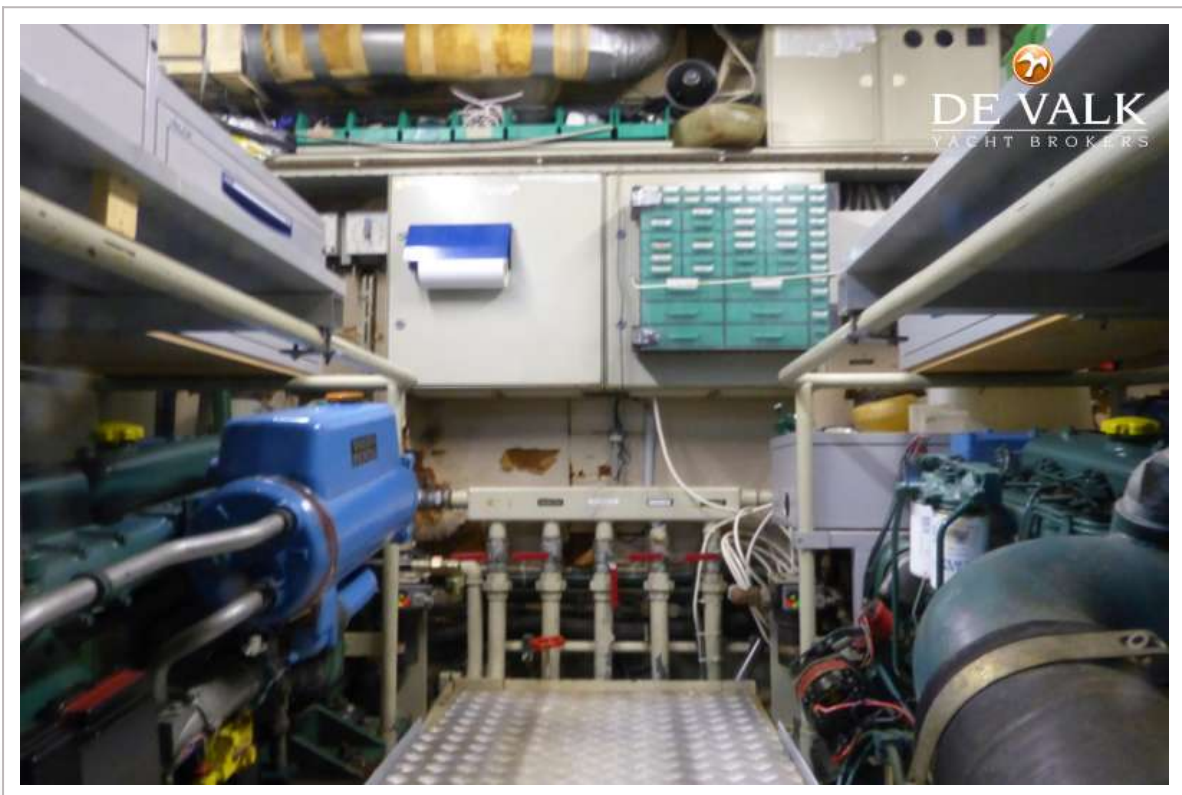














# MOONEN 61

