



## NELSON 40 PILOT



# NELSON 40 PILOT

## BROKER'S COMMENTS

The Nelson 40 Pilot is one of the most iconic pilot boats ever designed and built. Used as an actual pilot boat by the Belgium customs, the Nelson retired and was fully stripped and rebuilt (superstructure, interior, generator, engines, equipment) in 2005. After being purchased by the current caring owner she got all the loving care; repaint the exterior and woodwork in 2015 and reconstructing the hull below the waterline in 2016 with 5 layers of fiberglass/epoxy (3 years guaranty left). This Nelson 40 Pilot is probably the best kept Nelson on the marked and must be seen!

*Koen Mulder*

## SPECIFICATIONS

<b>Dimensions</b>	12.00 x 3.66 x 1.05 (m)	<b>Builder</b>	Halmatic UK
<b>Built</b>	1973	<b>Cabins</b>	1
<b>Material</b>	GRP	<b>Berths</b>	2
<b>Engine(s)</b>	2 x Vetus Deutz DT 66 A diesel	<b>Hp/Kw</b>	2 x 210.00 (hp), 154.00 (kw)
<b>Asking price</b>	sold (VAT )	<b>Lying</b>	at sales office

## CONTACT

<b>Sales office</b>	De Valk Loosdrecht B.V.	<b>Telephone</b>	+31 (0)35 582 90 30
<b>Address</b>	't Breukeleveense Meentje 6 1231LM Loosdrecht / Wijdmeren NL	<b>E-mail</b>	loosdrecht@devalk.nl

## DISCLAIMER

These particulars are given in good faith as supplied but cannot be guaranteed.



## GENERAL

Model	NELSON 40 PILOT
Type	motor yacht
LOA (m)	12,00
Beam (m)	3,66
Draft (m)	1,05
Headroom (m)	1,95
Year built	1973
Builder	Halmatic UK
Country	Great Britain
Designer	Arthur Mursell
Displacement (t)	16
CE norm	A
Hull material	GRP
Hull colour	blue
Hull shape	deep-V
Superstructure material	aluminium Rebuilt in 2005
Rubbing strake	rubber
Deck material	GRP Refitted in 2015
Deck finish	non-skid paint
Superstructure deck finish	paint
Cockpit deck finish	teak
Antifouling (year)	2019
Window frame	aluminium
Window material	glass
Portholes	aluminium
Mast can be lowered	manual
Fuel tank (litre)	polyethylene 4 tanks, 1800 L in total
Level indicator (fuel tank)	Vetus
Freshwater tank (litre)	GRP 400
Level indicator (freshwater)	Vetus



Blackwater tank (litre)	GRP 120
Level indicator (blackwater)	Vetus
Blackwater tank extraction	
Wheel steering	hydraulic Vetus
Inside helm position	yes
More info on paintwork	Repainted in 2015

## ACCOMMODATION

Cabins	1
Berths	2
Interior	teak Rebuilt in 2005
Floor	teak and holly
Open cockpit	yes
Pilot house	yes
Saloon	yes
Headroom saloon (m)	1,95
Heating	diesel ducted hot air Eberspacher
Opening door to cockpit	yes
Galley	yes
Countertop	Duropal
Sink	stainless steel
Cooker	ceramic Atag
Extractor	Vetus
Microwave/oven combi	Sharp
Fridge	2x Isotherm
Freezer	In fridge
Hot water system	220V + engine 60L Isotherm boiler
Water pressure system	electrical
Kettle	yes
Coffee maker	Philips
Owners cabin	v-bed



Bed length (m)	2
Wardrobe	hanging/drawers/shelves
Bathroom	separate
Toilet	separate
Toilet system	electric
Wash basin	in the bathroom
Shower	separate

## MACHINERY

No of engines	2
Make	Vetus Deutz
Type	DT 66 A
HP	210,00
kW	154,00
Fuel	diesel
Year installed	2005
Maximum speed (kn)	22,00
Cruising speed (kn)	12,00
Consumption (l/hr)	6,00
Engine hours	SB: 1892 / BB: 1604
Engine cooling system	freshwater heat exchanger
Drive	shaft
Engine controls	electrical & bowden cable Morse
Gearbox	mechanical ZF
Bowthruster	electric
Exhaust	watercooled
Propeller type	fixed
Propeller blades	4
Propeller shaft material	stainless steel
Shaft lubrication	water
Electric bilge pump	yes



Bilge alarm	yes
Electrical installation	24/220
Generator	wet exhaust Vetus 6KVA
Running hours generator	225
Start battery	2x Vetus 12V/125Ah
Service battery	4x
Battery monitor	Victron BMV-501
Battery charger/inverter	Victron Quattro 24/3000/70
Shorepower	with cable
Trimtabs	Lectrotab control panel

## NAVIGATION

Compass	Cassens & Plath
Electric compass	B&G H1000 autopilot
Depth sounder/log	B&G H1000
VHF	Sailor / Uniden Oceanus DSC
Autopilot	B&G H1000
Rudder angle indicator	Vetus
GPS	2x Furuno WAAS GP 32
Plotter/GPS	Simrad
Navigation lights	yes
Searchlight	yes
Extra info	2x Furuno GPD GP-32

## EQUIPMENT

Fixed windscreen	yes
Cockpit cover	yes
Bimini	yes
Cockpit table	yes
Transom door	Integrated
Anchor	15 KG



Anchor chain	yes
Windlass	electrical Vetus Ajax
Dinghy	inflatable
Outboard	2.5 HP Mariner
Sea railing	stainless steel
Grab rail (superstructure)	
Wiper	Vetus
Clearview window	Speich
Window heating	yes
Horn	
Fenders	yes
Mooring lines	yes
TV	Sharp
TV receiver	Strong 5000T
DVD player	Philips LX3600D
Surround Sound System	yes
Speakers in salon	Pioneer
Clock - barometer	Weems & Plath







# NELSON 40 PILOT



# NELSON 40 PILOT



# NELSON 40 PILOT





# NELSON 40 PILOT



# NELSON 40 PILOT



# NELSON 40 PILOT





# NELSON 40 PILOT



# NELSON 40 PILOT





# NELSON 40 PILOT

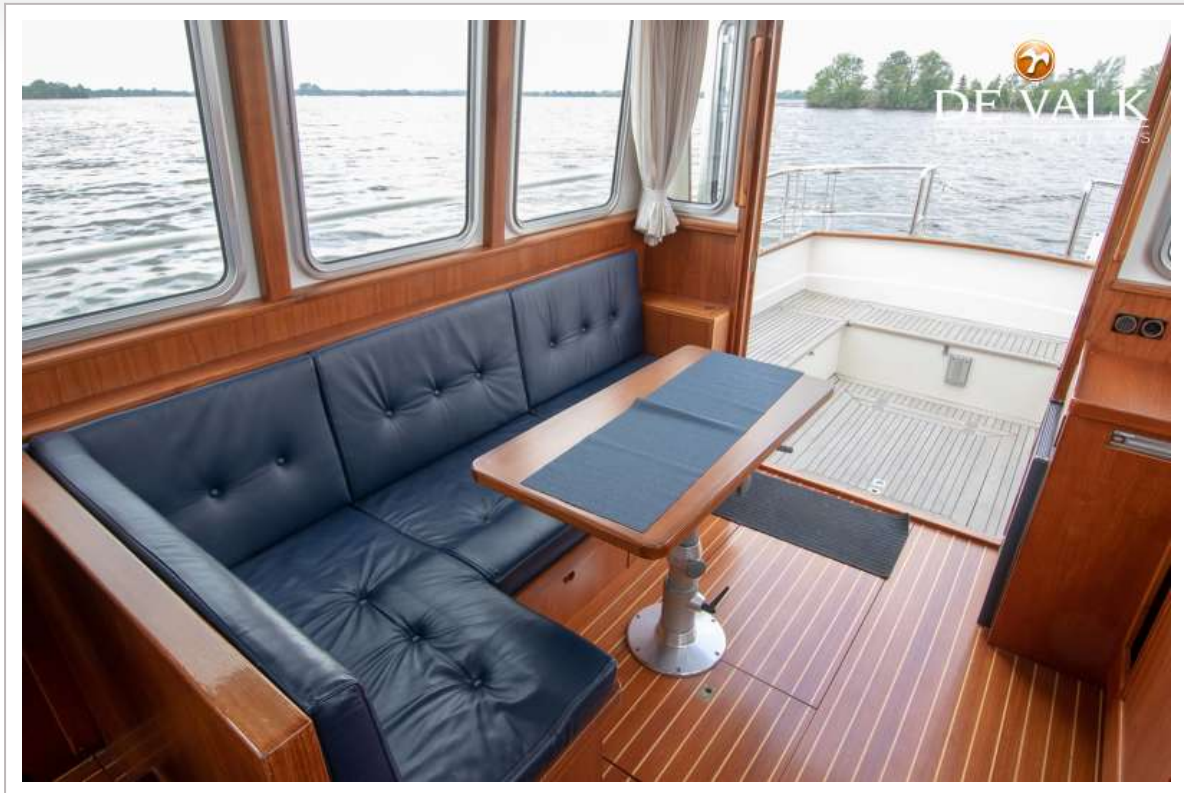


# NELSON 40 PILOT





# NELSON 40 PILOT

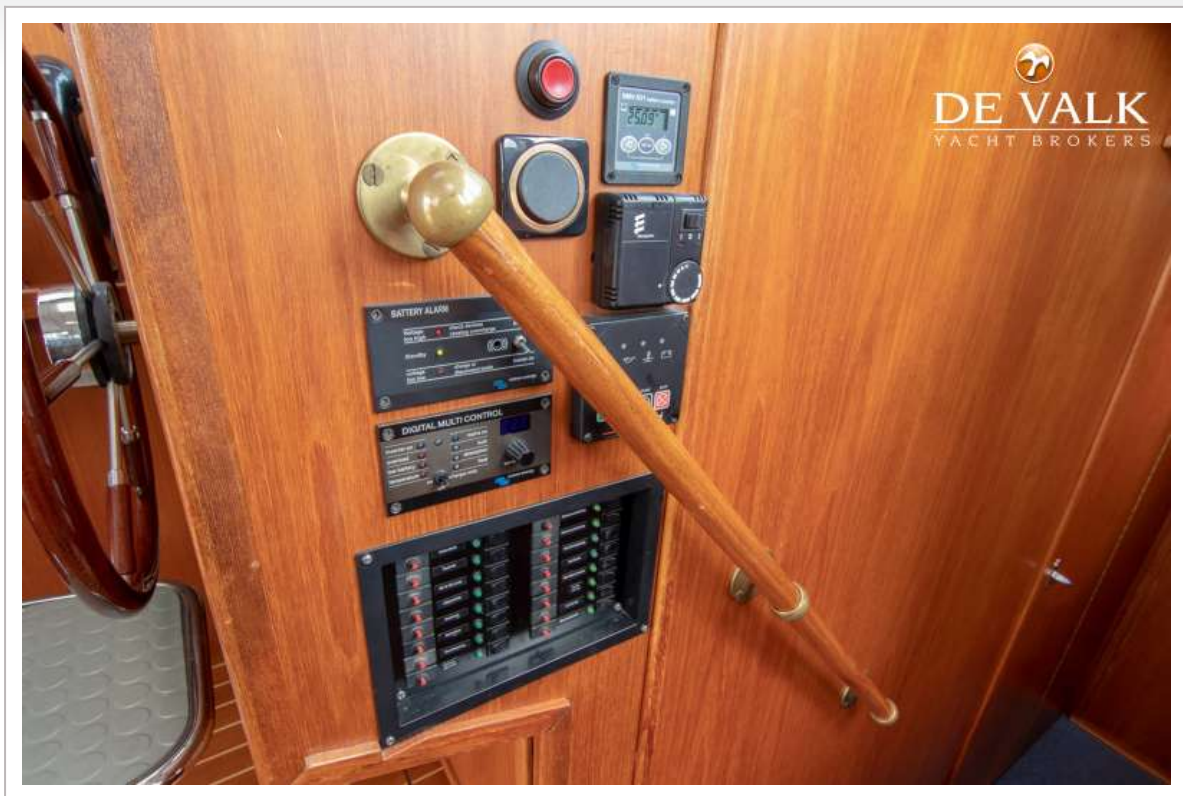


# NELSON 40 PILOT





# NELSON 40 PILOT



# NELSON 40 PILOT

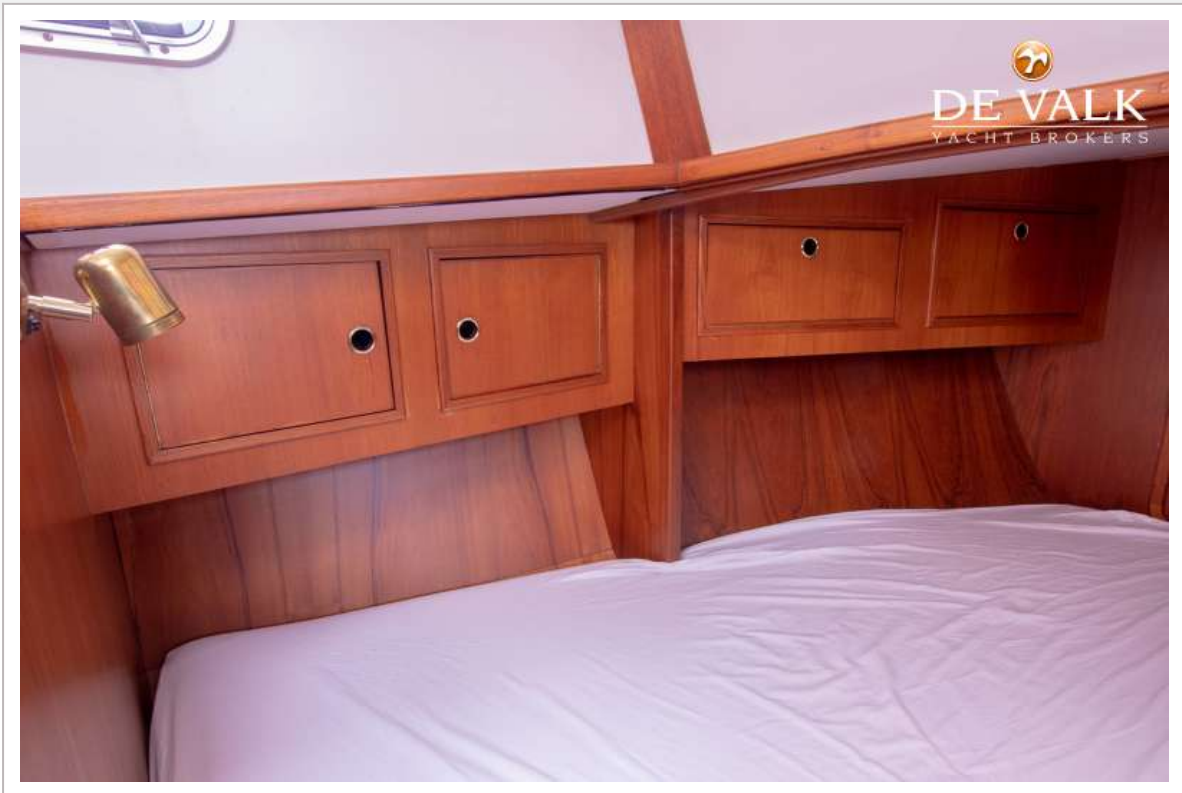




# NELSON 40 PILOT



# NELSON 40 PILOT





# NELSON 40 PILOT



# NELSON 40 PILOT

