



DE VALK
YACHT BROKERS



RIVIERA 33 FLYBRIDGE



DE VALK
YACHT BROKERS

RIVIERA 33 FLYBRIDGE

BROKER'S COMMENTS

Riviera 33 Flybridge – Stylish, Powerful & Comfortable! This stunning flybridge boat combines style and performance. With two powerful Volvo Penta engines, you can cover long distances at high speed or cruise efficiently at lower speeds. Enjoy a panoramic view from the flybridge, a spacious saloon to be extended by opening the door to the cockpit, and easy access to the swim platform. Perfect for relaxing days on the water! This Riviera 33 is now located on shore at our sales office in Sint Annaland and ready for a visit.

Joris van de Rijt

SPECIFICATIONS

Dimensions	11.46 x 3.83 x 1.00 (m)	Builder	Riviera Group
Built	2008	Cabins	1
Material	GRP	Berths	4
Engine(s)	2 x Volvo Penta D6-310 diesel	Hp/Kw	2 x 310.00 (hp), 227.85 (kw)
Asking price	€ 149.000 (VAT Paid)	Lying	at sales office

CONTACT

Sales office	De Valk Sint Annaland B.V.	Telephone	+31 (0)166 601 000
Address	Koelhuisweg 4 4697 RM Sint Annaland NL	E-mail	sintannaland@devalk.nl

DISCLAIMER

These particulars are given in good faith as supplied but cannot be guaranteed.



RIVIERA 33 FLYBRIDGE

GENERAL

Model	RIVIERA 33 FLYBRIDGE
Type	motor yacht
LOA (m)	11,46
LWL (m)	10,73
Beam (m)	3,83
Draft (m)	1,00
Year built	2008
Builder	Riviera Group
Country	Australia
Designer	Riviera group
Displacement (t)	9
Hull material	GRP
Hull colour	white
Hull shape	deep-V
Superstructure material	GRP
Rubbing strake	stainless steel
Deck material	GRP
Deck finish	non-skid moulded in
Superstructure deck finish	non-skid moulded in
Cockpit deck finish	teak
Antifouling (year)	08-2025
Deckhatch	yes
Flybridge	yes
Fuel tank (litre)	1000
Freshwater tank (litre)	390
Blackwater tank (litre)	68
Wheel steering	hydraulic
Flybridge helm position	hydraulic
Extra info	Hull + superstructure polished 08-2025



ACCOMMODATION

Cabins	1
Berths	4
Open cockpit	yes
Deck saloon	yes
Saloon	yes
Dinette to convert into berth	U shaped settee
Sliding door to aft deck	yes
Galley	yes
Countertop	yes
Sink	stainless steel
Cooker	yes
Fridge	yes
Hot water system	220V + engine
Water pressure system	electrical
Owners cabin	double bed
Bathroom	yes
Toilet	yes
Wash basin	yes
Shower	yes
Guest cabin 1	U shaped settee in saloon can be converted into double bed

MACHINERY

No of engines	2
Make	Volvo Penta
Type	D6-310
HP	310
kW	227.85
Fuel	diesel
Engine hours	702
Engine cooling system	freshwater heat exchanger



RIVIERA 33 FLYBRIDGE

Drive	shaft
Engine controls	electrical Volvo Penta
Bowthruster	electric Side Power
Propeller shaft material	stainless steel
Shaft lubrication	water
Electric bilge pump	yes
Start battery	yes
Service battery	yes
Battery charger	yes
Inverter	yes
Shorepower	with cable

NAVIGATION

Compass	yes
Compass on flybridge	yes
Depth sounder	yes
VHF	yes
Autopilot	yes
Plotter	yes
Navigation lights	yes
Searchlight	yes

EQUIPMENT

Fixed windscreen	On flybridge
Bimini	yes
Sun awning	yes
Bathing platform	yes
Boarding ladder	stainless steel
Transom door	yes
Anchor	yes
Anchor chain	yes



Windlass	electrical
Sea railing	stainless steel
Grab rail (superstructure)	stainless steel
Pushpit	yes
Fenders	yes
Mooring lines	yes
Radio	yes



RIVIERA 33 FLYBRIDGE





RIVIERA 33 FLYBRIDGE



RIVIERA 33 FLYBRIDGE



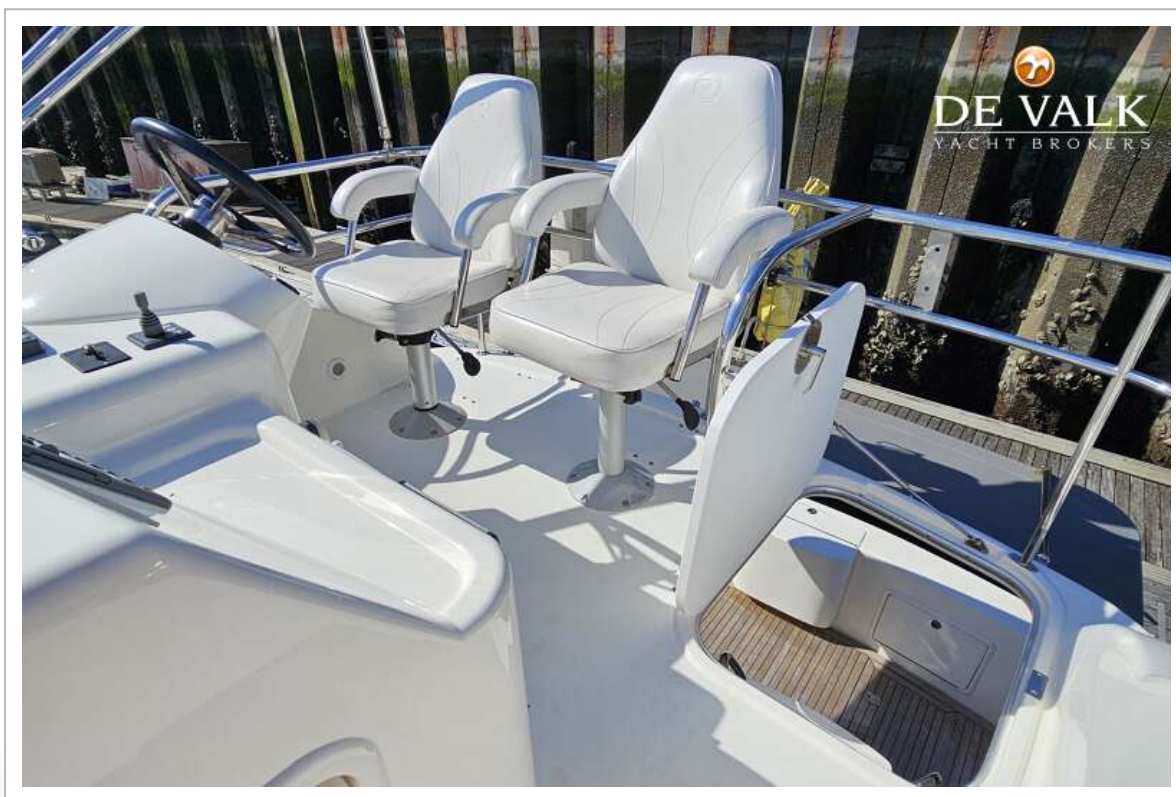
RIVIERA 33 FLYBRIDGE



RIVIERA 33 FLYBRIDGE



RIVIERA 33 FLYBRIDGE



RIVIERA 33 FLYBRIDGE



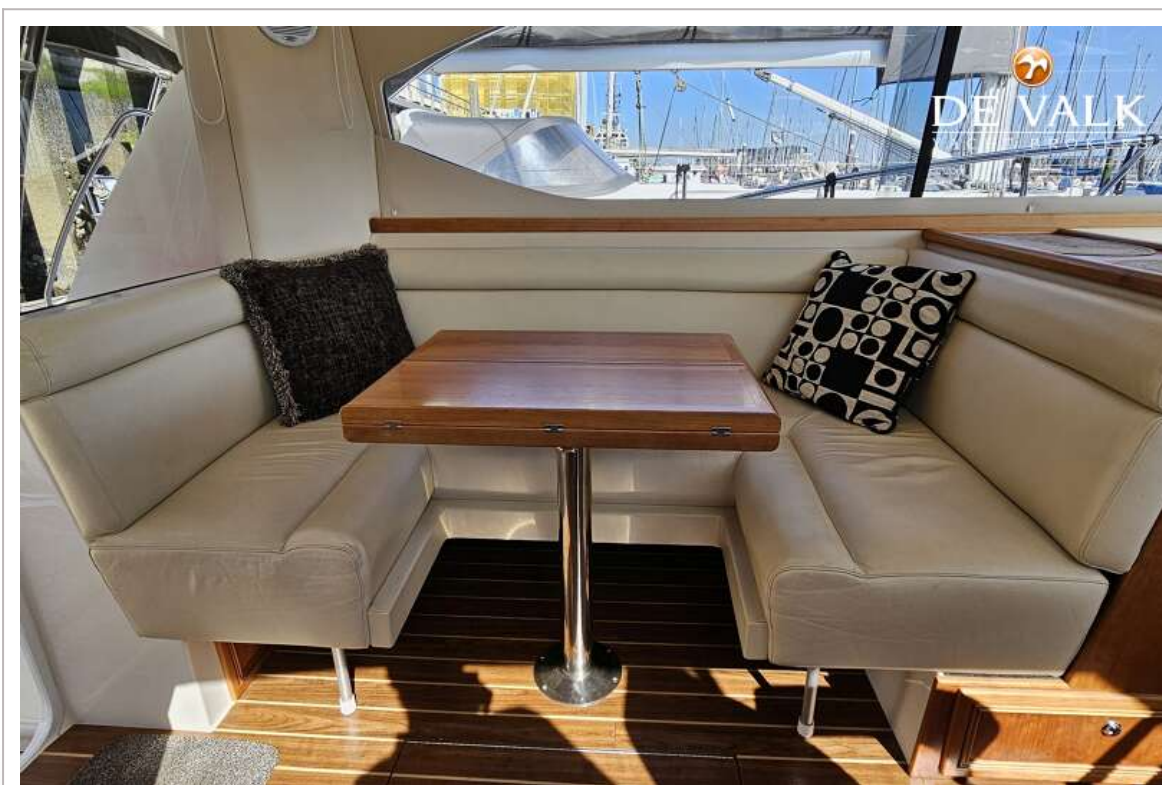
RIVIERA 33 FLYBRIDGE



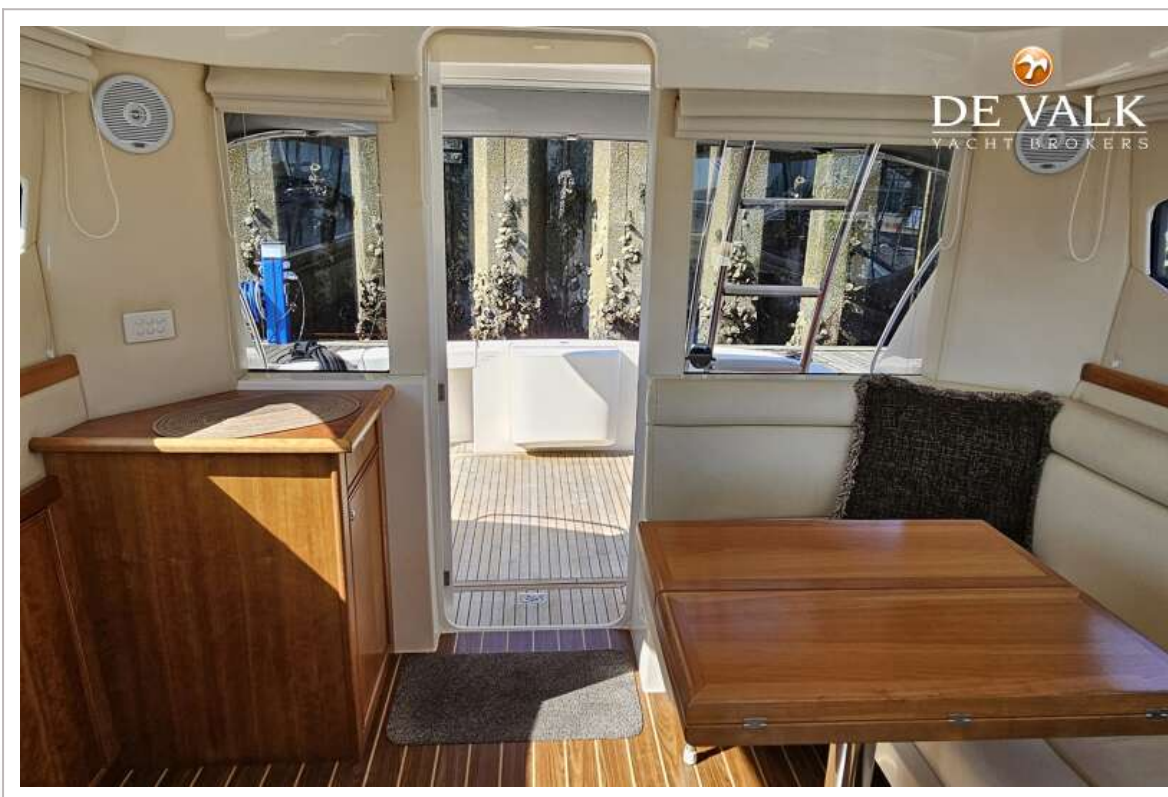
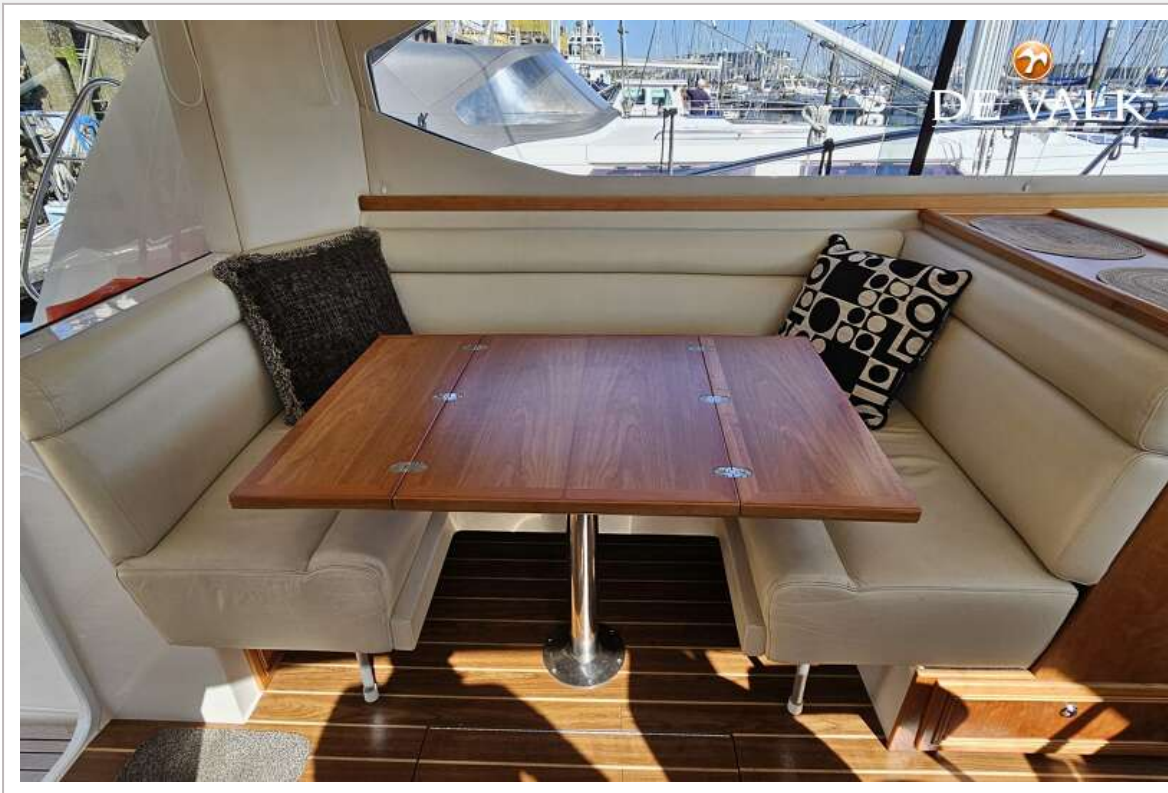
RIVIERA 33 FLYBRIDGE



RIVIERA 33 FLYBRIDGE



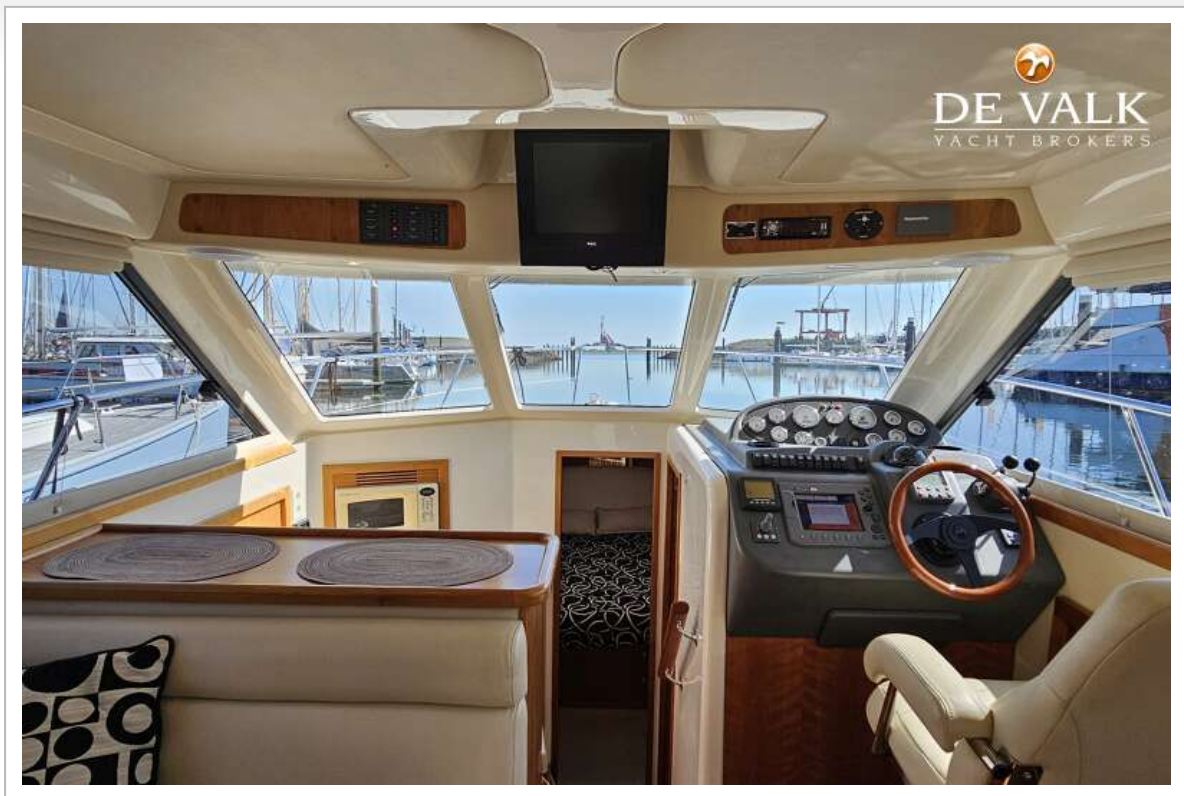
RIVIERA 33 FLYBRIDGE



RIVIERA 33 FLYBRIDGE



RIVIERA 33 FLYBRIDGE



RIVIERA 33 FLYBRIDGE



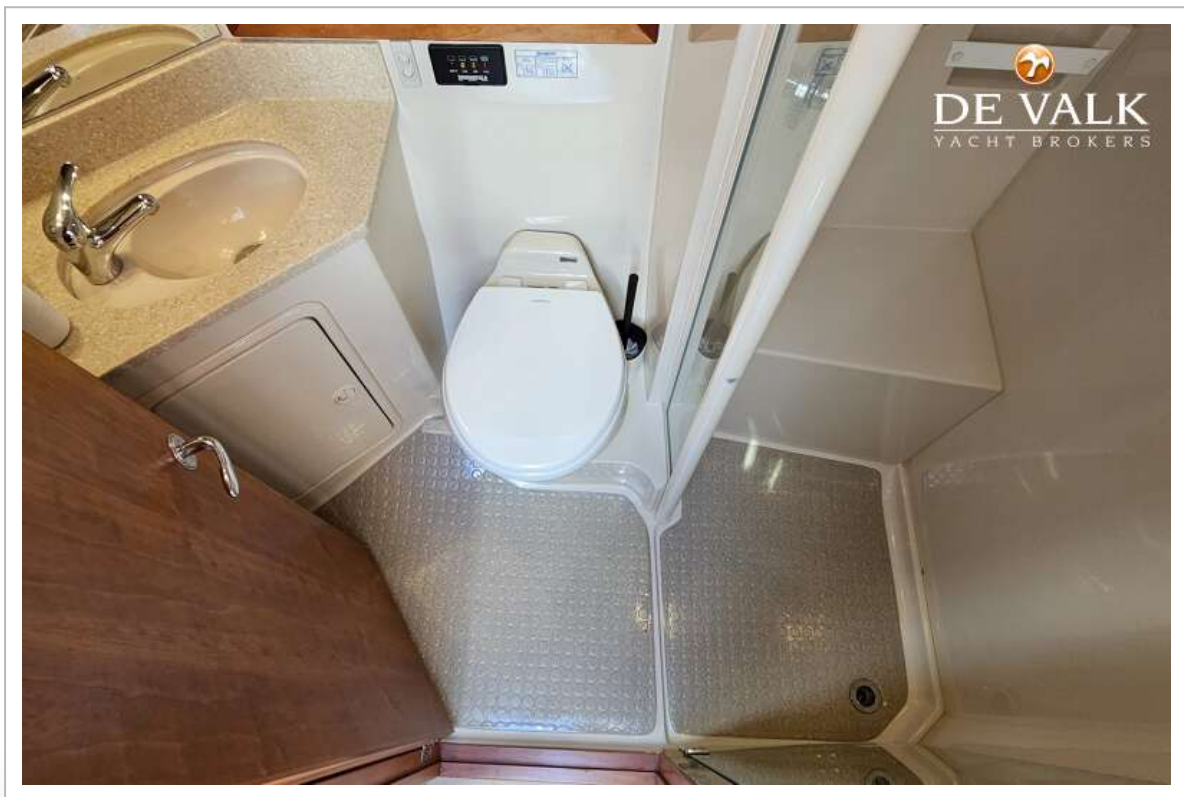
RIVIERA 33 FLYBRIDGE



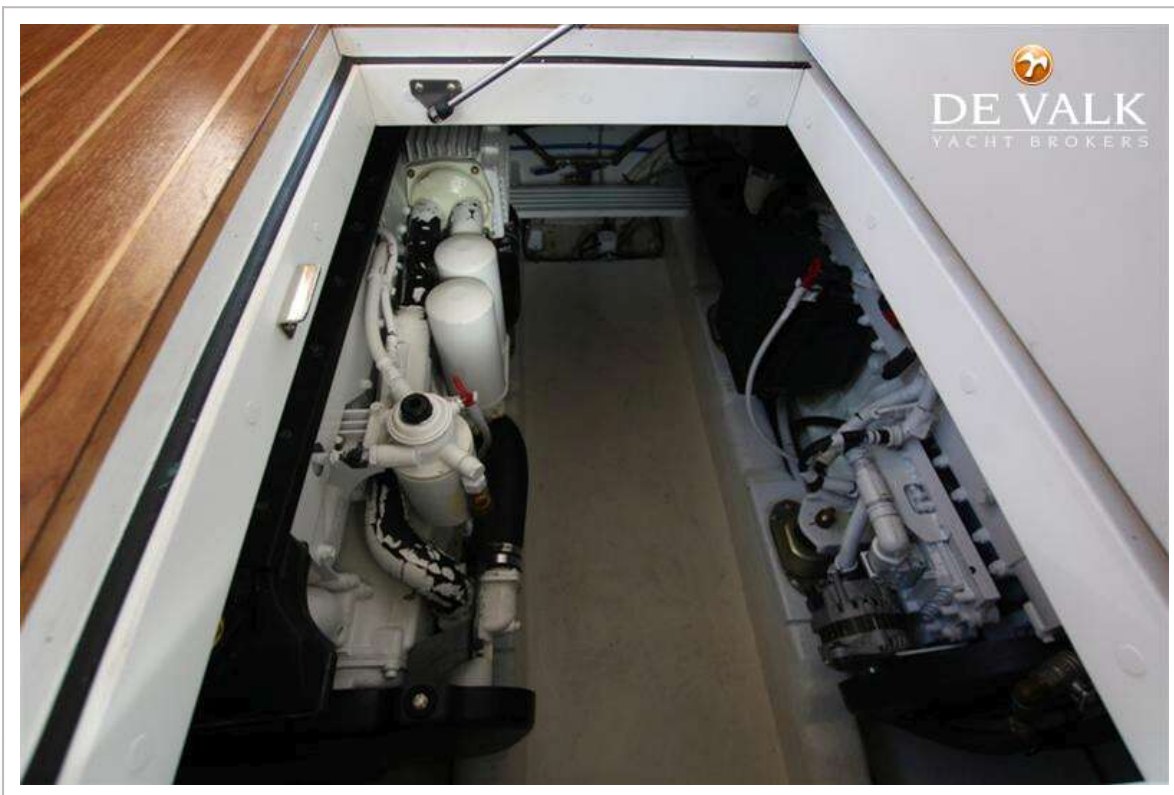
RIVIERA 33 FLYBRIDGE



RIVIERA 33 FLYBRIDGE



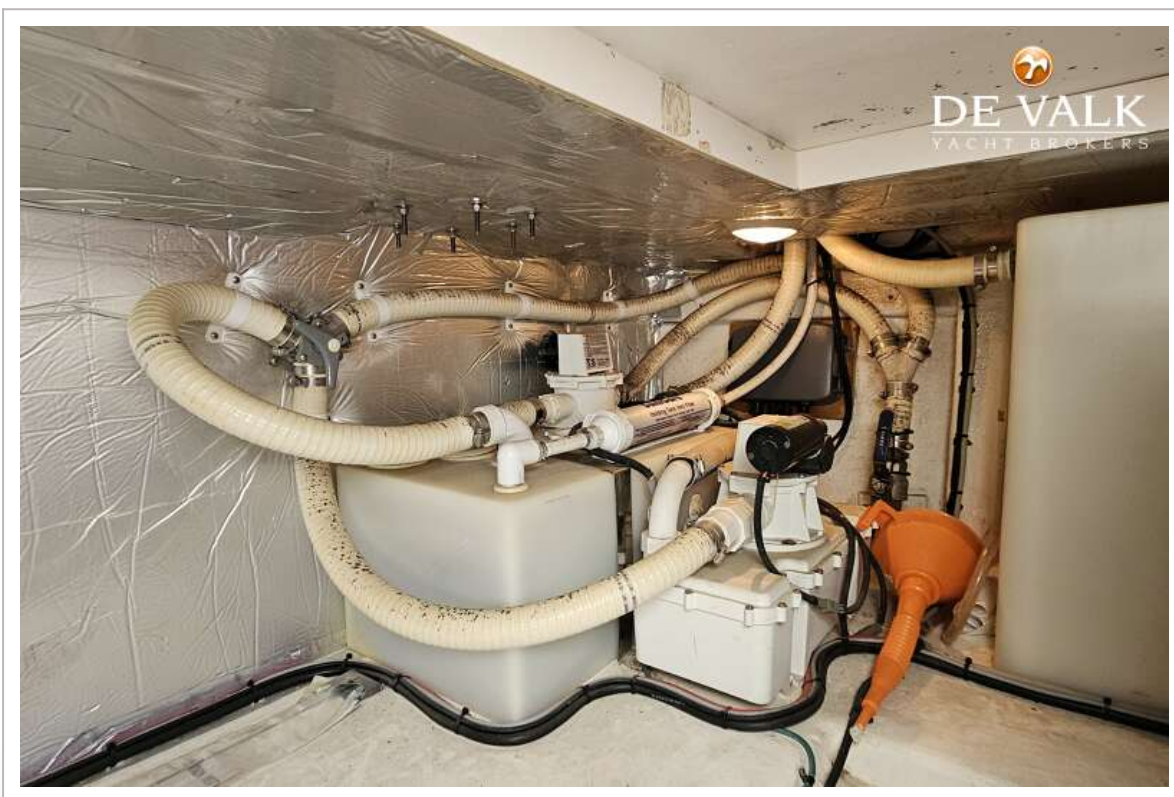
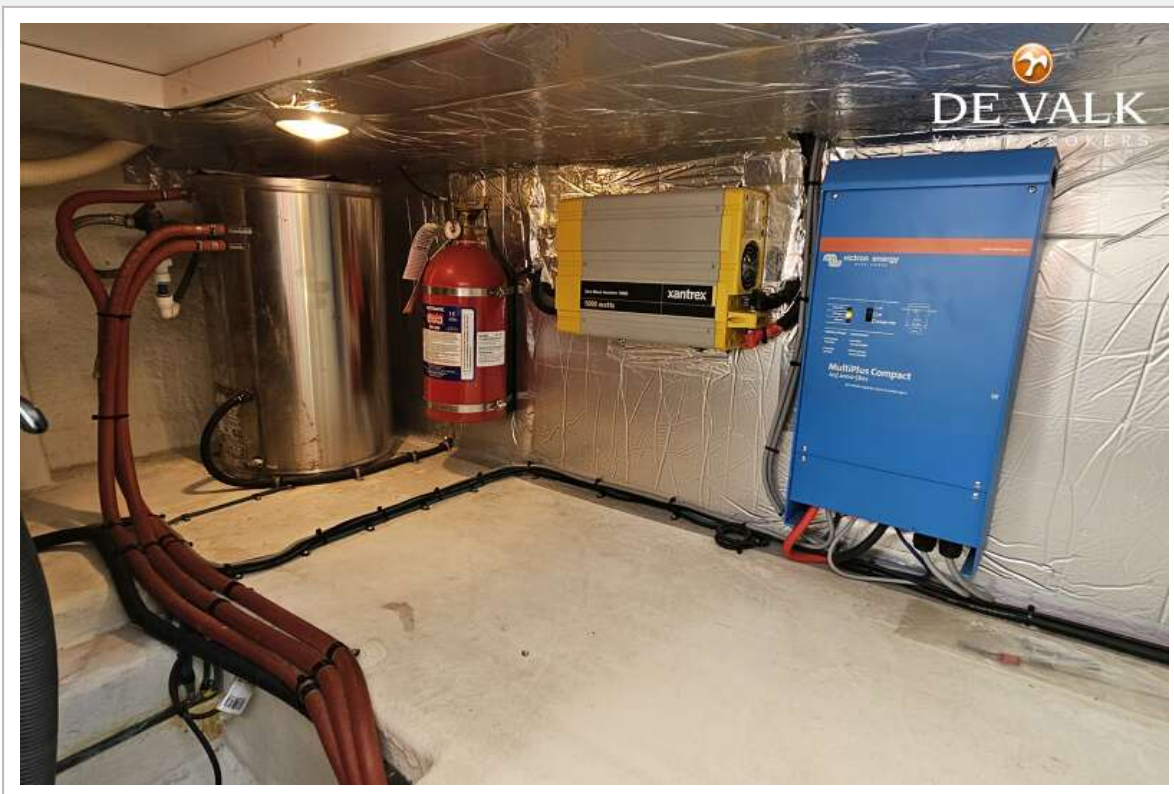
RIVIERA 33 FLYBRIDGE



RIVIERA 33 FLYBRIDGE



RIVIERA 33 FLYBRIDGE



RIVIERA 33 FLYBRIDGE

